



0 123456 789012

**EuTek**  
**Business Solutions**

*For a smarter business.  
For a smarter planet.*



**POYRAZ MOBILE SUITE®**  
**FIELD OPERATIONS/ASSET/INVENTORY**  
**MANAGER**

*Save Your Time..!*



**EUTEK Bilişim Teknolojileri ve İş Sistemleri Çözümleri San. ve Tic. Ltd. Şti.**

Bayar Cad. Gülbahar Sk. Ege Yıldız Sitesi A Blok No: 13 D: 33 Kozyatağı 34742 Kadıköy - İSTANBUL / TURKEY  
Tel: +90 216 384 07 42 Fax: +90 216 384 06 43

[www.eutek.com.tr](http://www.eutek.com.tr)

Recent developments in the mobile industry, changed the way of business in many areas. Operation Management is one of the most affected industries from this innovation.

According to TSIA's (Technology Services Industry Association) researches, more than %34 of companies, allocate budget for mobile software purchasing, for the next two years.

**Poyraz Mobile Suite®** is a new generation mobile software solution product, in the Asset&Operations Management area. Our product is fully integrated with IBM MAXIMO® which is one of the most common software used for asset management solutions. Moreover, it is developed to be easily integrated with Enterprise Systems, which has asset management capabilities, like SAP PM®, ORACLE EAM®, HP Asset Manager®, and many others.

**Poyraz Mobile Suite®** is Fully Integrated with Barcode Readers, which are mostly using Windows Mobile Operating System.



Many Functions Available @ Blackberry, iPhone, Android



**Poyraz Mobile Suite®** allowing you to:

Still Using Forms?

→ Improve asset management

A lot of Paperwork?

→ Improve asset service delivery

Slow Workflow?

→ Improve asset-related decision-making

Slow response times?

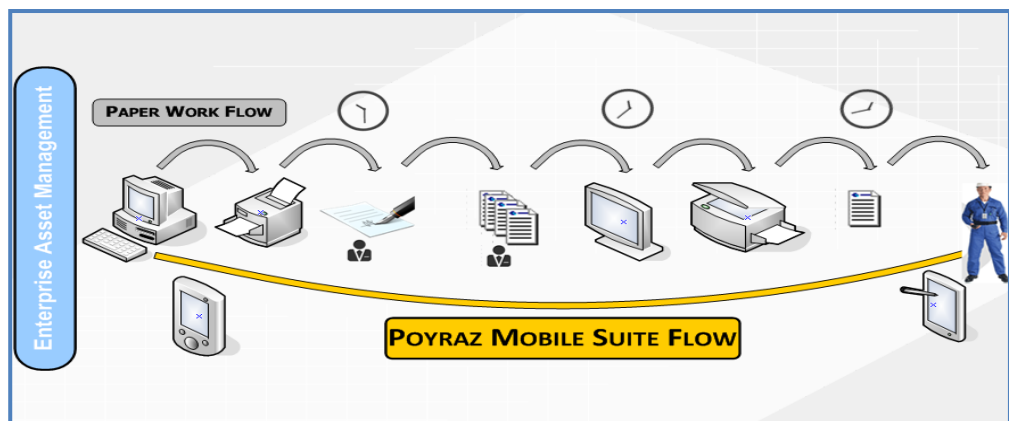
→ Improve regulatory compliance

Inaccurate and useless data?

→ Improve delivery quality

→ Improve process & data flow

→ Save your time..!



### ✓ Management Ability

Field & Warehouse Operations  
Administration Module  
Barcode Rules

### ✓ No more need for papers.

Purchase Order  
Material Request form  
Work order form

### ✓ Operational Efficiency

Gathering and sending Real-Time Data  
Increased Data Accuracy  
Geographical support

### Integration

### ✓ Ease of Usage

Both Offline & Online Modes



## Field Operations

- ✓ Enter to Site :

Used for recording items that received to related site .

- ✓ Remove from Site :

Used for removing items from related site by barcode reader.

- ✓ Change Ownership:

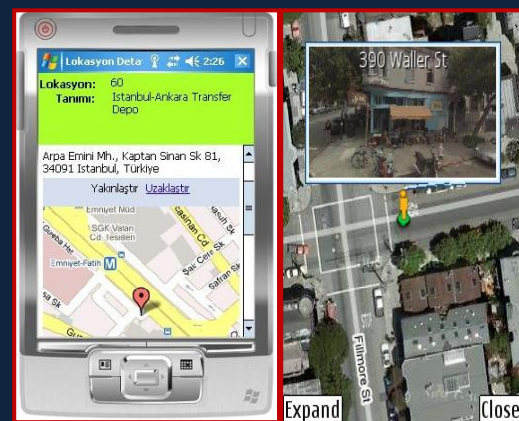
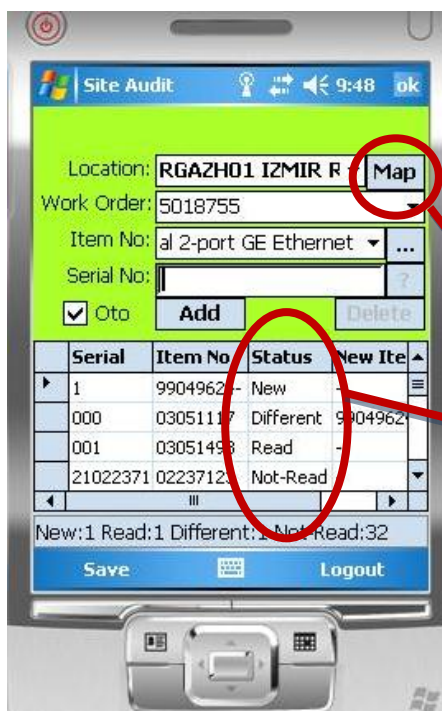
Used for changing item's owner by barcode reader.

- ✓ Site Audit:

Used for control of the assets in site. These items must have uploaded to mobile device.

Site auditing provides item status as Read, Not-Read, Different, New.

- ✓ Change Status Of The Asset
- ✓ Change Status Of The Location
- ✓ Query Assignments
- ✓ WO/CR Status changes
- ✓ Assign crafts to work orders.
- ✓ Create work order
- ✓ Create material request



Location is marked in Google Map.

Different Status types in Site Audit

## Warehouse Operations

- ✓ Receive To Warehouse:

Used for recording details of received item by reader due to Purchase Order. (PO Match-up)

- ✓ Issue via MR:

Used for recording details of outgoing item due to Material Request. (MR Match-up).

System would not allow to move more items than stated in Material Request. (MR line-matching)

- ✓ Counting Warehouse:

Count the number of items in warehouse by record details of input&output items.

Gathered data could be classified by item's status. (New/Different/Not-Read)

- ✓ Transfer Inside Warehouse:

Used for tracking of item transfers in warehouse.

- ✓ Transfer Between Storages:

Used for tracking of item transfers between warehouses.

- ✓ Send to Repair:

Used for send of defected material to repair with a tracking number.

- ✓ Receive From Repair

### Filed & Warehouse Operations Screen



# Administration Module

- ✓ Barcode Rules
- ✓ User&Group Authorization
- ✓ Data Access Privileges
- ✓ Menu & Application Privileges



## Automation for Barcode Reading

Condition Based Rules, Actions and Exclusions can be defined for Barcode reading operation.

User List Screen

Exclude Screen

Condition Screen

Action Screen

User Name:	Appearing Name:
LIFEI	Li Fei
MKARA	Mustafa Kara
LIUYU	Liu Yu
EBOLCAL	Ezgi Bolcal
WXINFENG	Wu Xinfeng
OSARI	Onur Sari
LKAIGE	Li Kaige
LFENG	Liu Feng
YEMRE	Yücel Emre
TEST	Test User

**New Exclude**

Condition: 115, 114, 20

Name: ExcludeX

Description: TypeX

Item No: 02080634, 02080524

Class 1: MW

Class 2: CIVIL-WORK

Class 3: 38/30

Class 4:

Start with: X sample: #,\$,A

End with: Y sample: #,\$,A

Include: &# sample: #,\$,A

Number of characters: <= 21

Save

**New Condition**

Name: ConditionX

Description: TypeX

Item No: 117

Class 1: BTS

Class 2: FULLMEN

Class 3: 6Y 112AH

Class 4:

Start with: A sample: #,\$,A

End with: S sample: #,\$,A

Include: #,1 sample: #,\$,A

Number of characters: > 10

Save

**New Action**

Priority: 1

Condition: 115

Name: deleteAction

Description: deletes#&1

Add to Left:

Add to Right:

Delete from Left:

Delete from Right:

Delete Include: #,&,1 sample: #,\$,A

Renewed Value:

New Value:

Left/Right Leng.: 7 / 11

Save



## Test Case, Avea Co.

Avea, the sole GSM 1800 mobile operator of Turkey, was founded in 2004. Being driven by a spirit of innovation, Avea, the youngest operator of Turkey, has a nationwide customer base of 11.4 million as of third quarter of 2010. Offering services to 96.61% of Turkey's population through its next generation network, the company has more than 2,700 employees, and is managing the field operation with 200 staff containing local employees and subcontractors.



### Challenge:

Avea has thousands of different equipment, including 2G, 3G transmission and non-gsm equipment produced by different suppliers.

Total number of transactions of the company reaches thousands per day in the pick rollout periods. Requirement was to automate 1 central and 4 regional warehouse and track the equipment movements between thousands of sites and locations nationally.

Avea needed an end-to-end equipment tracking system from receipt to scrap, including warehouse / field operations and spare management processes.

The system had to be real-time, fast, easy to use and clever, compelling the user to create the true data and at the time when the physical transactions occur.

Moreover, Avea requested to use original vendor's serial number and it was required to apply some rules on the barcodes, for standardizing the serial numbers as asset identifications.

There were many subcontractors who had to report their asset operation as a contractual responsibility, however there was a need to create a common system, standardizing the methods to report their operation.

System required to restrict the users to operate only in the related region and access relevant data.

### Solution:

Avea has preferred IBM maximo asset management system and EuTek Poyraz mobile suite integrated with it.

Every asset transaction is made from the mobile PDA's by scanning the barcode. The PDA's are connected to system by GPRS, 3G, wireless or directly from a PC.

The mobile system gets/sends all the required data from the enterprise system as maximo. Offline operation is also possible, whenever there is a loss or weak of signal.

Poyraz Atracker enables tracking assets movements between the different types of locations such as warehouses, vendors, subcontractors, network sites, labors and vehicles.

Every asset transaction from/to site is referenced by work order. Location/Asset statuses such as effective, operating, scrap, active, decommissioned, are changed from the field.

Site asset audits are done from the mobile devices, feeding acceptance&invoicing process of the new build sites.

With the administration module, additional users can be defined into the mobile system, without a need to define in enterprise system.

Application level restrictions are defined for the different type of user roles such as subcontractor, warehouse administrator, field operator, site administrator, etc.

Barcode scanning rules are defined for automated scanning without the need of manual correction.