



**Kursad MANGALOGLU**  
**Sales Specialist– Power Systems**  
**Systems & Technology Group**  
**IBM Turkey**



---

## AJANDA

- ✓ **Günümüz IT Trendleri**
- ✓ **Power Systems nedir?**
- ✓ **Neden Power Systems Sanallaştırma Teknolojisi?**

# İNSANOĞLUNUN TEKNOLOJİ ADAPTASYONU

100 MİLYON KULLANICI

facebook

9 AYDA

50 MİLYON KULLANICI



3 YILDA

50 MİLYON KULLANICI



4 YILDA

50 MİLYON KULLANICI



13 YILDA

50 MİLYON KULLANICI



38 YILDA

# Her an veri üretiyoruz



**Dünyanın 27% 'si online**



**5 milyar mobil abone**



**1 milyardan fazla mobil Internet kullanımı**

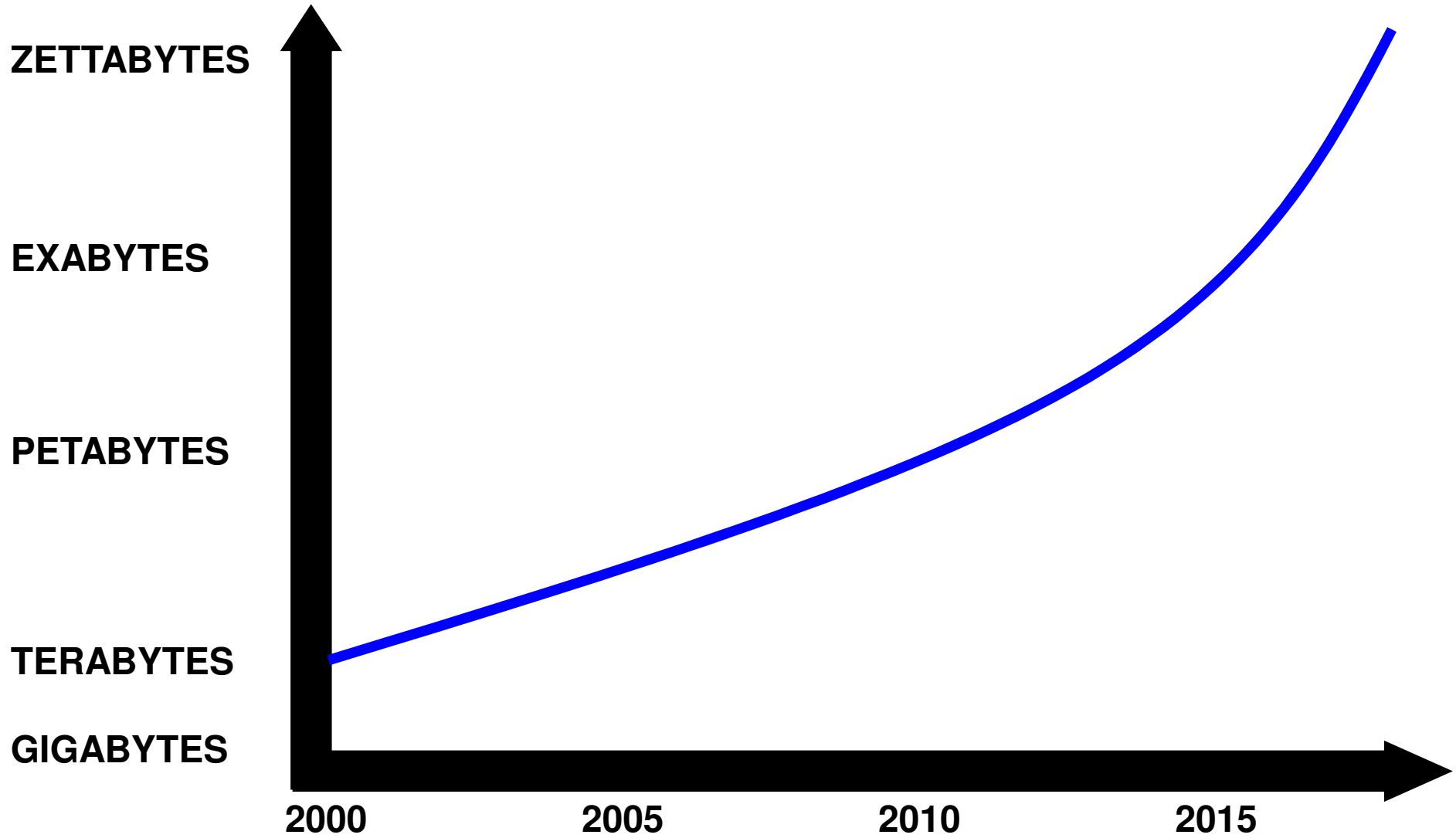
**facebook**

**twitter**

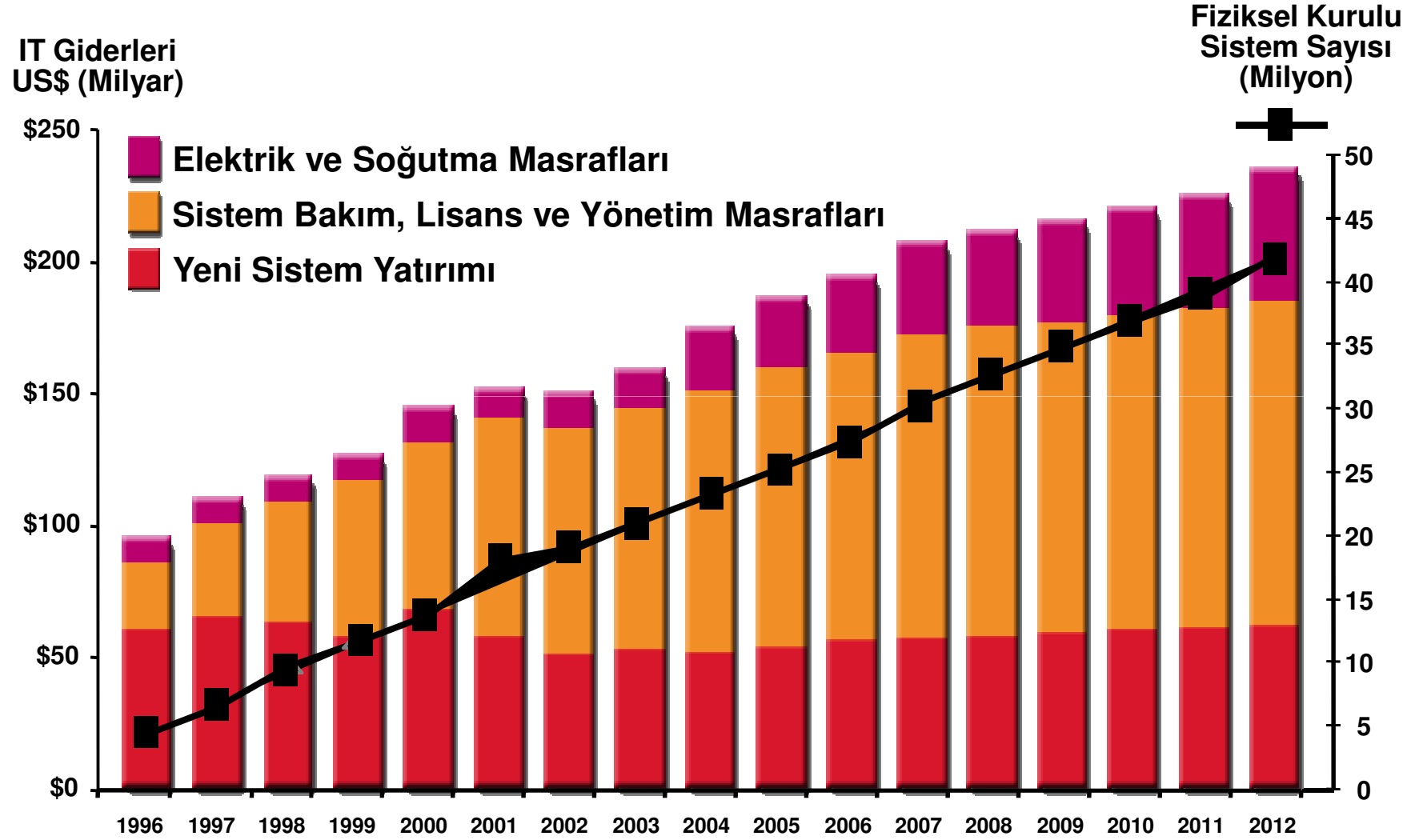
**milyarlarca twitt – facebook datası**

**IBM.**

## Veri büyüklüğü her 18-24 ayda bir 2'ye katlanıyor

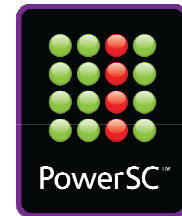
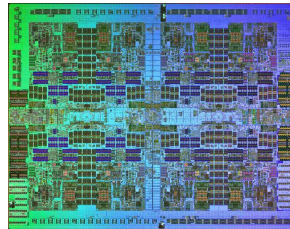
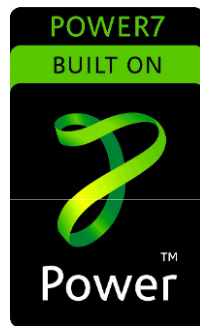


# NEYE YATIRIM YAPIYORSUNUZ ?

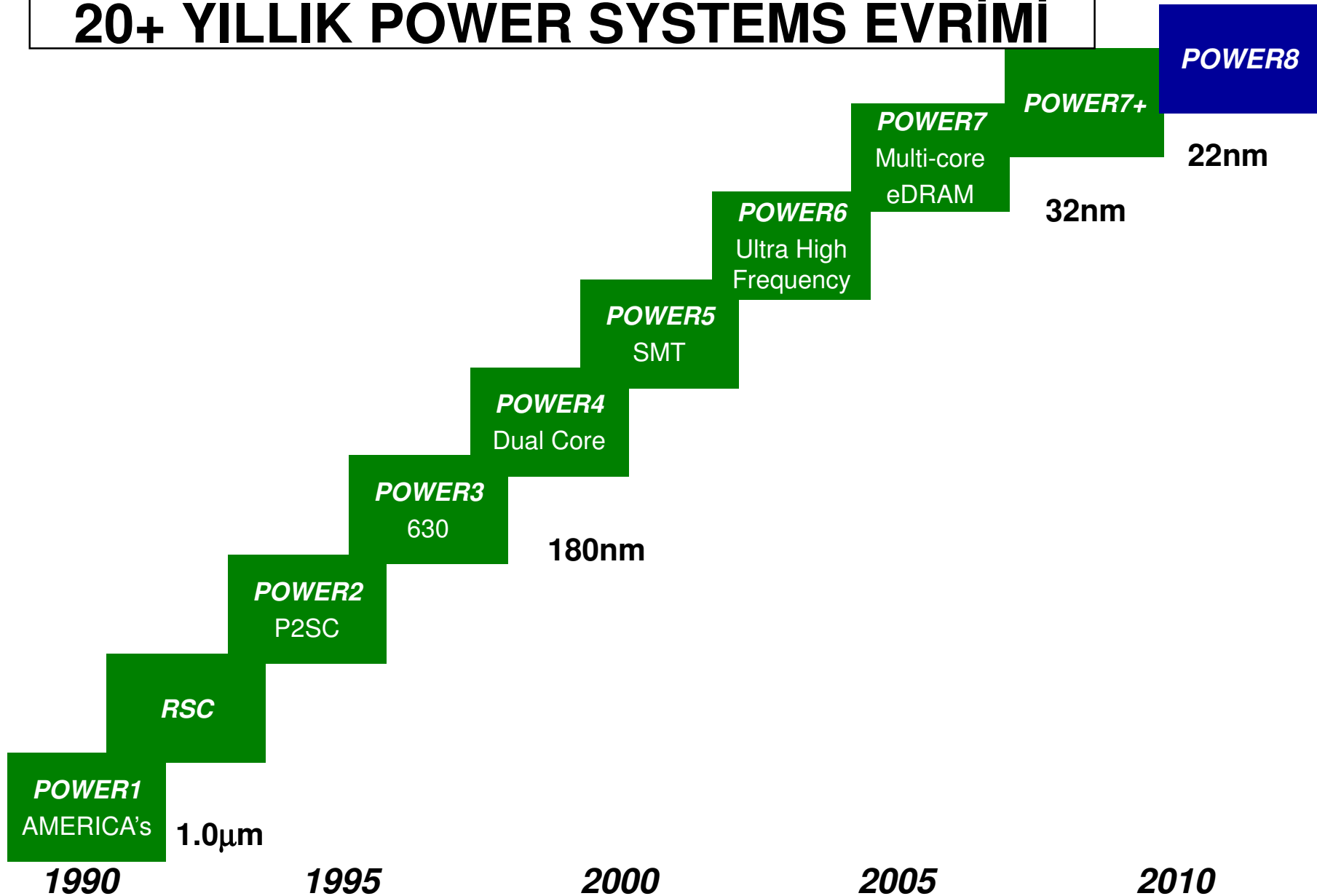


# Power Systems Nedir?

## Performance Optimization With Enhanced RISC

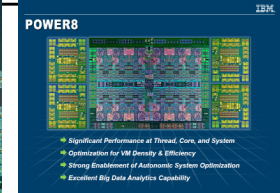
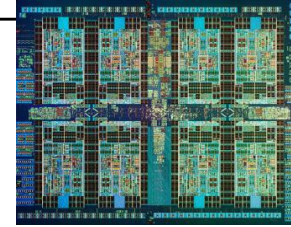
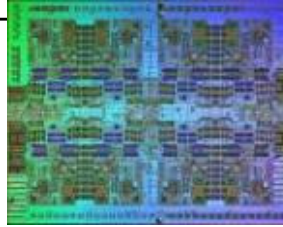
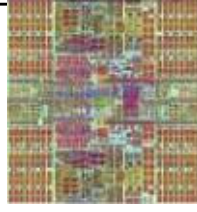
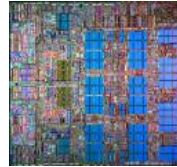
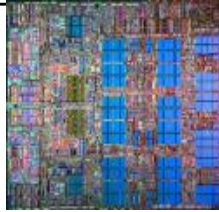


# 20+ YILLIK POWER SYSTEMS EVRİMİ



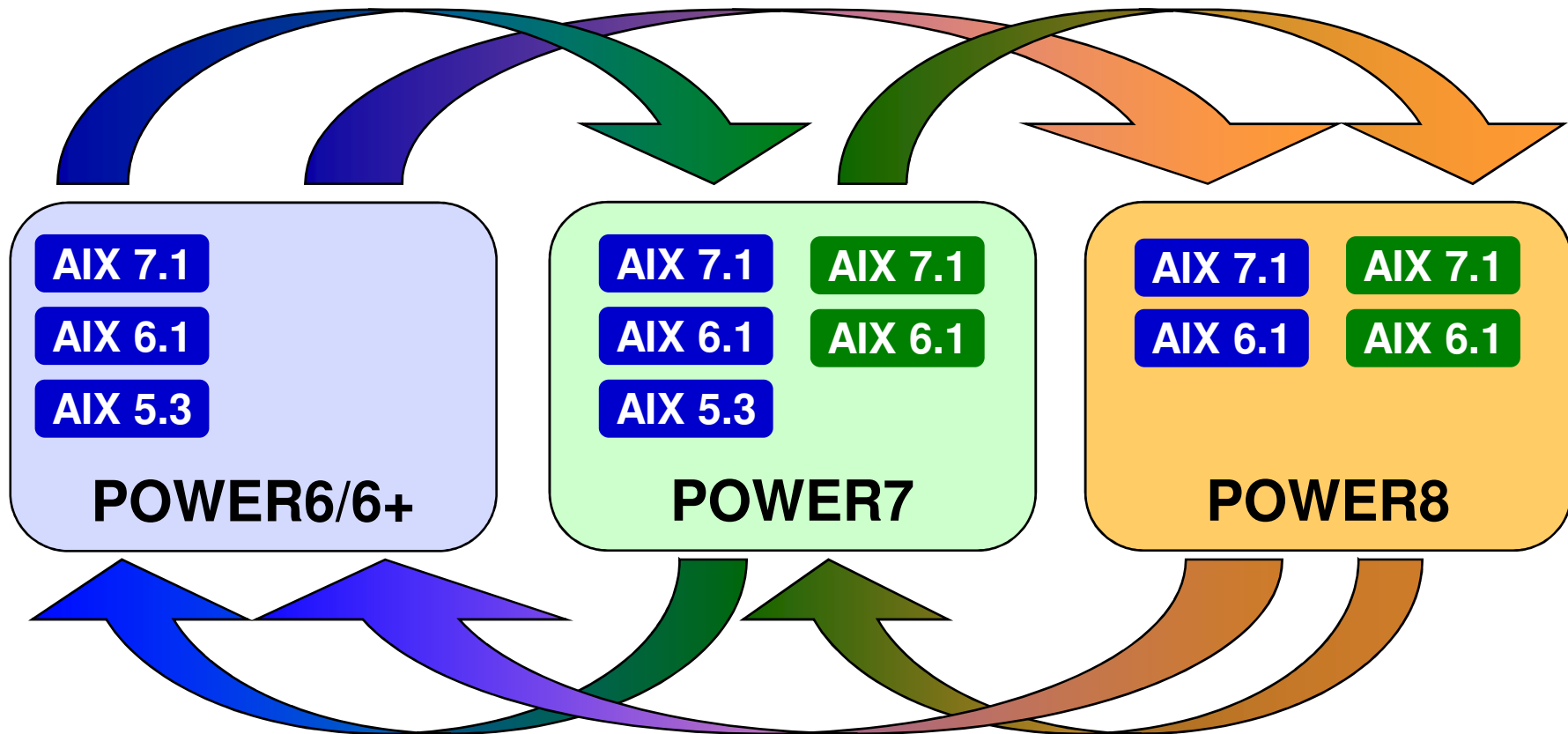


# YATIRIM YAPIYORSANIZ YOL HARİTASI ÖNEMLİDİR...



	POWER5 2004	POWER5+ 2005	POWER6 2007	POWER7 2010	POWER7+ 2012	POWER8
Technology	130nm	90nm	65nm	45nm	32nm	22nm
Size	389 mm <sup>2</sup>	245 mm <sup>2</sup>	341 mm <sup>2</sup>	567 mm <sup>2</sup>	567 mm <sup>2</sup>	-
Transistors	276 M	276 M	790 M	1.2 B	2.1 B	-
Cores	2	2	2	8	8	-
Frequencies	1.65 GHz	1.9 GHz	4 - 5 GHz	3 - 4 GHz	3.6 - 4.4+ GHz	-
L3 Cache	36MB	36MB	32MB	4MB / Core	10MB / Core	-
LPAR	10 / Core	10 / Core	10 / Core	10 / Core	20 / Core	-

# YATIRIMINIZI KORUYORUZ: POWER6 / POWER7 / POWER8





AYAKTA KALABİLİRLİK	~ DAKİKA / YIL	~ BİRİM MALİYET	~ 1000 X (\$ - TL - €)
99.997%	15	1.0	1.000
99.99%	53	3.3	3.300
99.90%	525	33	33.000
99.00%	5256	333	333.000

✓ 'Advanced Interactive Executive' 1986 yılında çıkmış, IBM UNIX uyarlamasıdır.

✓ Açık sistemlerde çalışabilirlik süresi en yüksek olan işletim sistemidir.

✓ Diğer işletim sistemlerindeki gibi "MAVİ EKİRAN" ile karşılaşmazsınız.

✓ Sisteminize virüs bulaşmaz.

✓ Devamlı olarak "YENİDEN BAŞLATMAK ZORUNDA KALMAZSINIZ"



## SIZING NEYE GÖRE YAPILACAK ?

### HER İŞ YÜKÜ İÇİN ATIL ÇALIŞAN AYRI SUNUCU MU?

#### TEST

16 CORE?

32 GB?

İŞLETİM  
SİSTEMİ?

#### YEDEKLEME

8 CORE?

16 GB?

İŞLETİM  
SİSTEMİ?

#### BI

32 CORE?

64 GB?

İŞLETİM  
SİSTEMİ?

#### GELİŞTİRME

16 CORE?

32 GB?

İŞLETİM  
SİSTEMİ?

#### VERİ TABANI

16 CORE?

256 GB?

İŞLETİM SİSTEMİ?

#### UYGULAMA

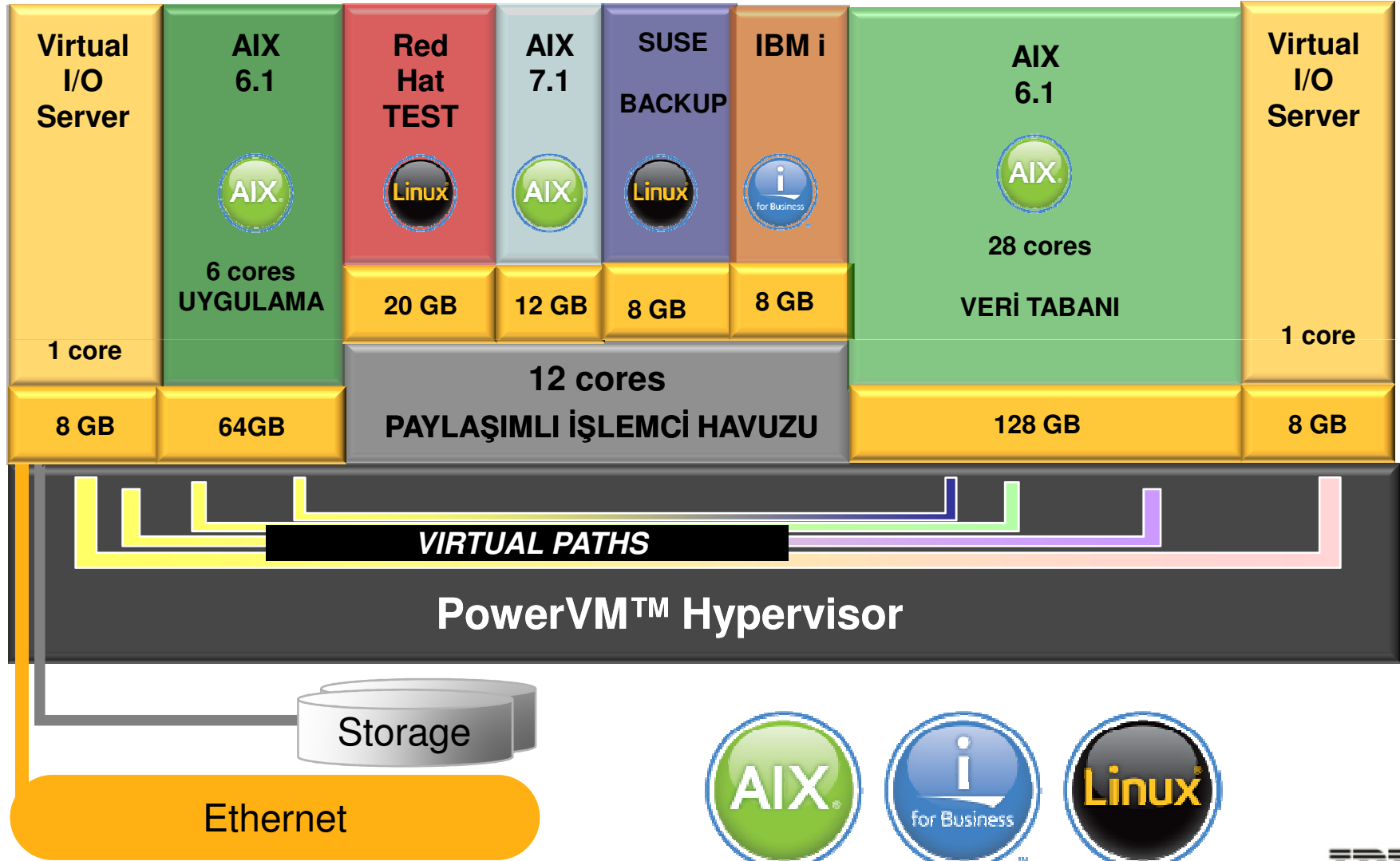
32 CORE?

512 GB?

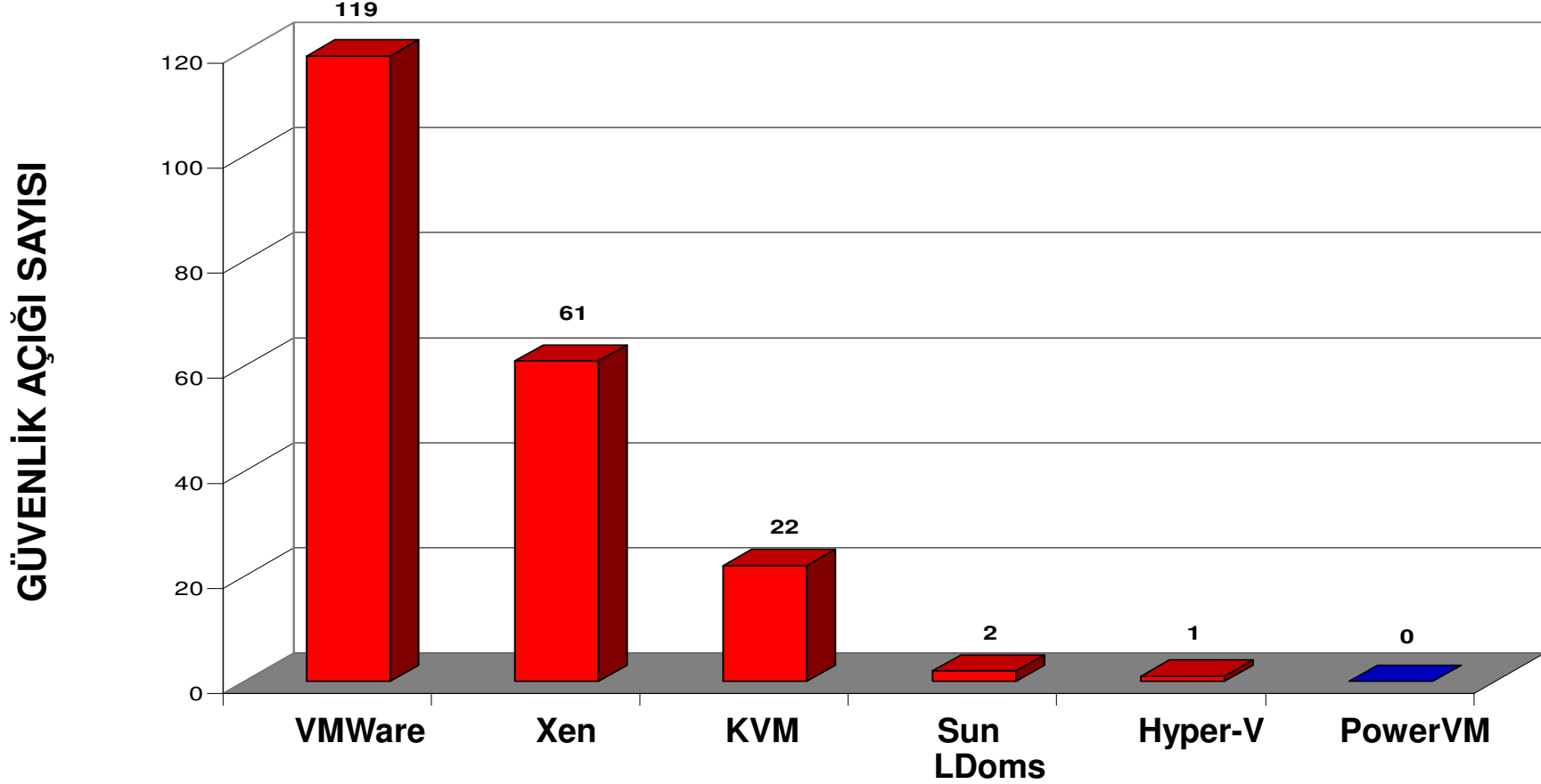
İŞLETİM SİSTEMİ?

# DÜNYANIN 1 NUMARALI SANALLAŞTIRMA TEKNOLOJİSİ

## Power VM



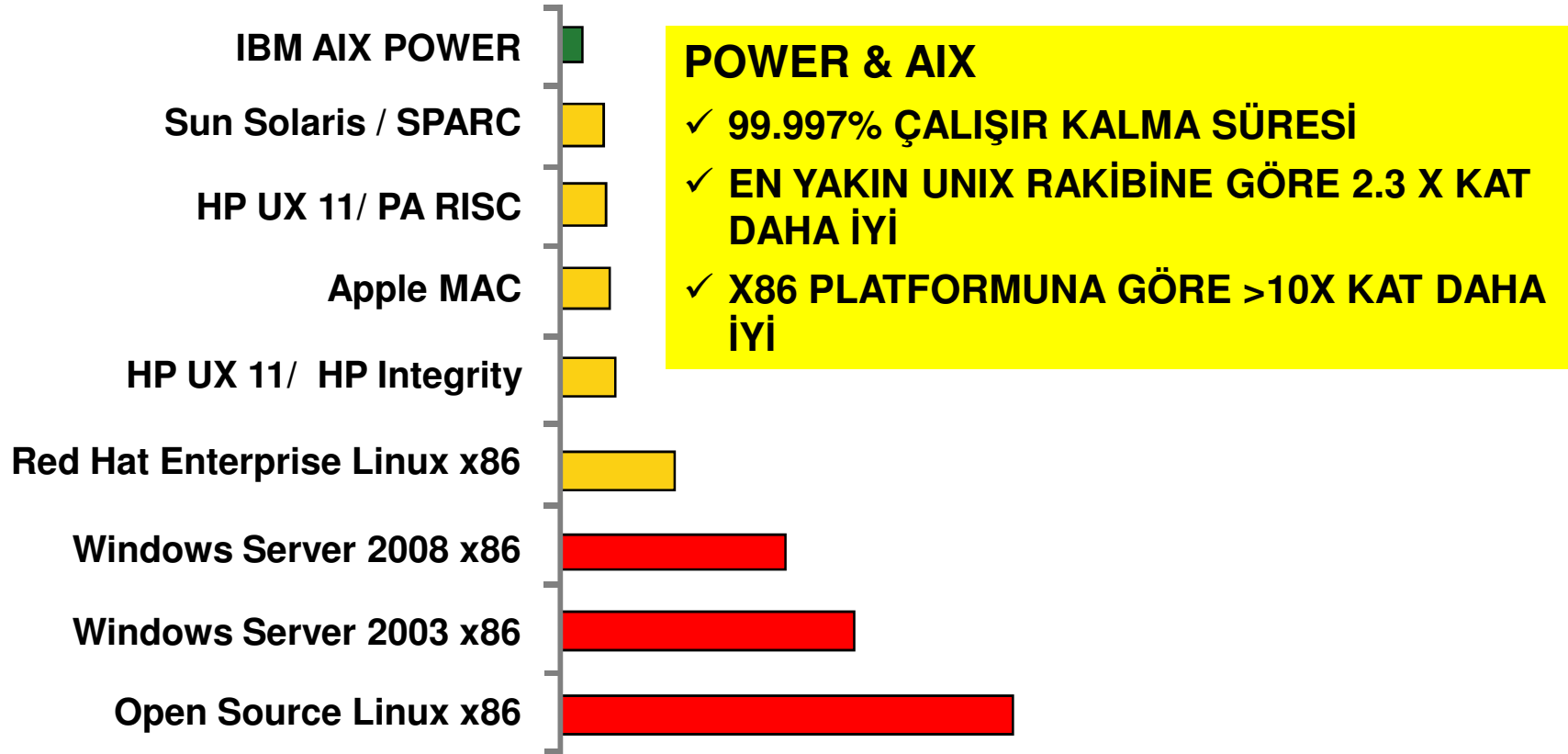
# PowerVM BUGÜNE KADAR RAPORLANAN TEK BİR GÜVENLİK AÇIĞI DAHİ VERMEMİŞTİR.



Source: National Vulnerability Database, <http://nvd.nist.gov/>

# POWER SYSTEMS DÜNYANIN EN GÜVENİLİR PLATFORMUDUR.

*ATIL KALMA SÜRESİ (SAAT / YIL)*



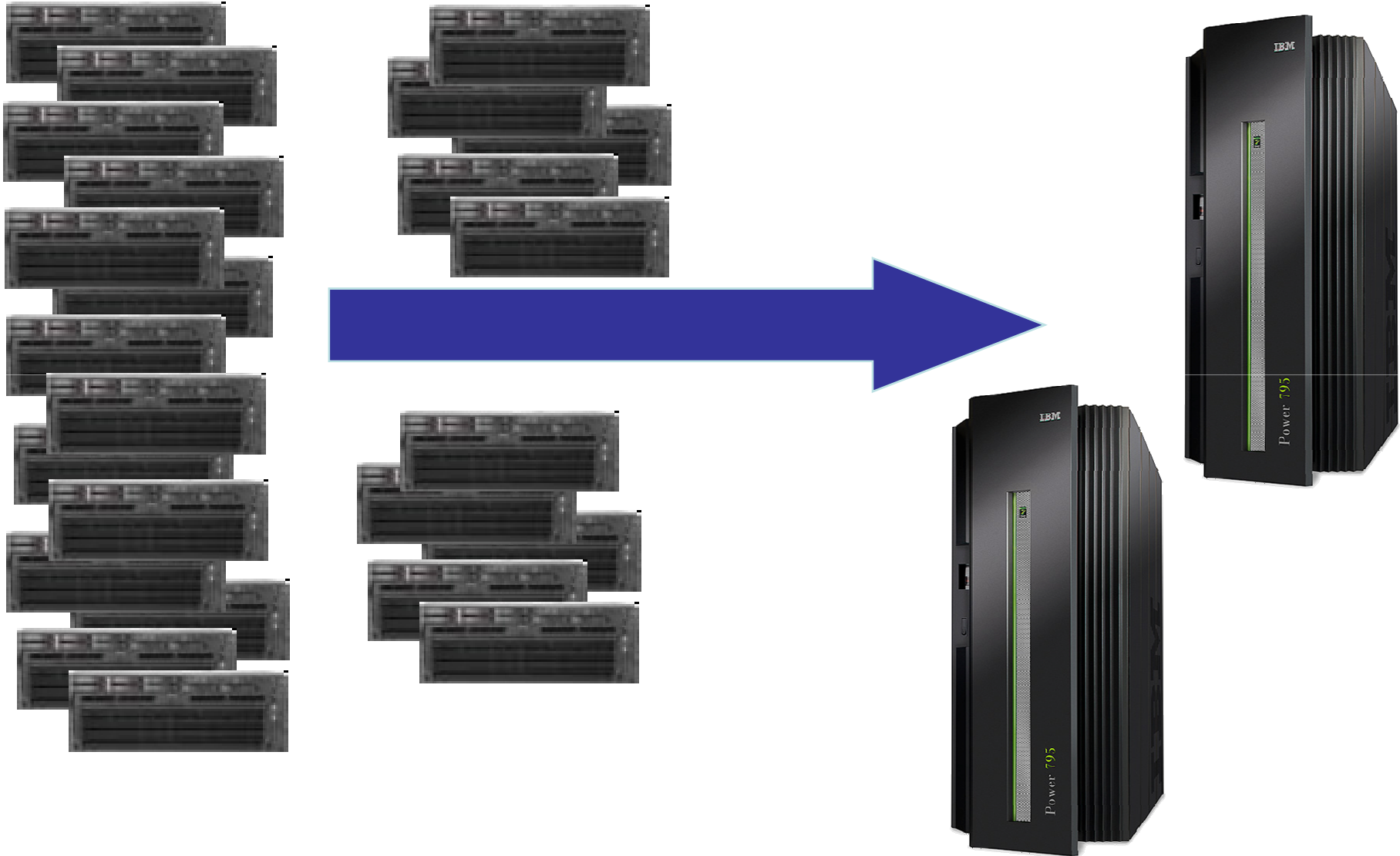
**BİLGİ:** [ITIC Global Server Hardware & Server OS Reliability Survey Results](#)

## Problem anında kimi arayacaksınız?

BİLEŞEN	IBM	x86
İŞLEMÇİ	IBM	Intel
FIRMWARE	IBM	Phoenix, American Megatrends, Insyde SW
SANALLAŞTIRMA	IBM	VMware, Xen, KVM, Microsoft
İŞLETİM SİSTEMİ	IBM	Red Hat, Novell, Sun, Microsoft
SİSTEM	IBM	HP, Dell, IBM
DRIVERS	IBM	??
YÜKSEK ERİŞİLEBİLİRLİK	IBM	Symantec, Steeleye, Microsoft, VMware, Red Hat
VERİTABANI	IBM	Microsoft, Oracle, IBM
YEDEKLEME	IBM	Symantec, IBM, EMC
DİSK	IBM	EMC, HDS, IBM, HP, ...
AĞ YAPISI	IBM	Cisco, HP, IBM, ...



# IBM POWER SYSTEMS İLE LİMİTSİZ SANALLAŞIN !!!

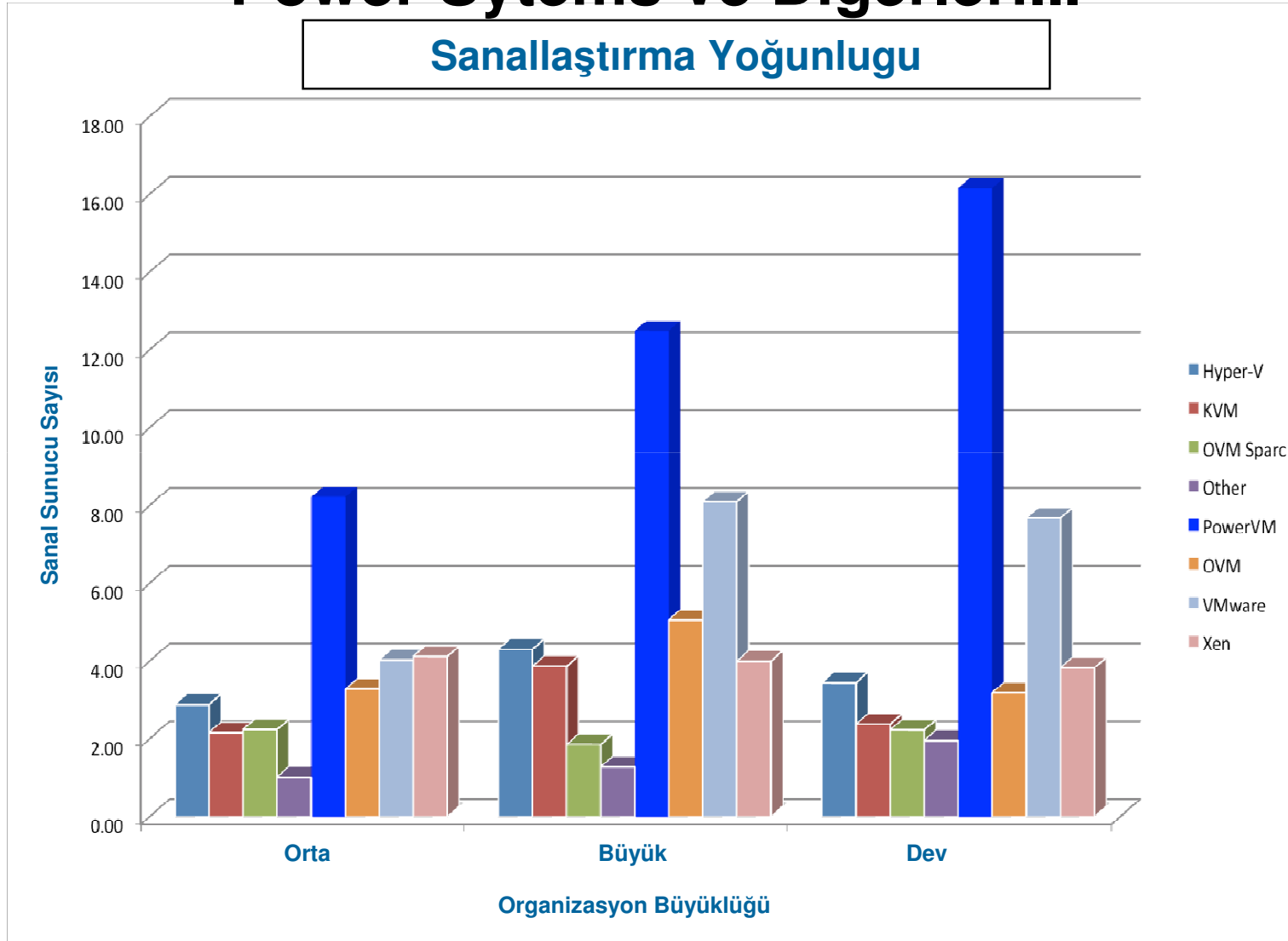


# OTURDUĞUNUZ YERDEN 100'lerce SUNUCU YÖNETİN

Name	ID	Status	Processing Units	Memory (...)	Active Profile	Environment
db2member1	5	Running	5	64	db2member1.prf	AIX or Linux
p770-1-vio02	2	Running	4	12	p770-1-vio02.prf	Virtual I/O Server
was1	6	Running	4	32	was1.prf	AIX or Linux
purescaleccf1	10	Running	4	128	purescaleccf1.prf	AIX or Linux
p770-1-vio01	3	Running	3.9	12	p770-1-vio01.prf	Virtual I/O Server
was3	7	Running	3	32	was3.prf	AIX or Linux
dwh-ds	12	Running	3	32	dwh-ds.prf	AIX or Linux
infoprint	18	Running	2	8	infoprint.prf	AIX or Linux
sysdir1	4	Running	2	12	sysdir1.prf	AIX or Linux
pl1	19	Running	2	16	pl1.prf	AIX or Linux
portal1	17	Running	1	16	portal1.prf	AIX or Linux
cdc-cdd	14	Running	1	16	cdc-cdd.prf	AIX or Linux
lombardi1	11	Running	1	16	lombardi1.prf	AIX or Linux
cognos	13	Running	1	16	cognos.prf	AIX or Linux
esb1	8	Running	1	16	esb1.prf	AIX or Linux
itcam	15	Running	1	16	itcam.prf	AIX or Linux
wsrr	9	Running	1	16	portal1.prf	AIX or Linux
tg	16	Open Firmware	0.1	15	tg.def	AIX or Linux
wasprd	1	Not Activated	0	6	def	AIX or Linux

# Power Sytems ve Diğerleri...

## Sanallaştırma Yoğunluğu



# NEDEN IBM POWER SYSTEMS ?

## GERÇEK SANALLAŞTIRMA:POWERVM

- RAKİPLERDEN DAHA FAZLA PERFORMANS
- SANAL BÜYÜMEDE RAKİPLERDEN DAHA FAZLA VERİMLİLİK
- SIFIR GÜVENLİK AÇIĞI
- HYPERVISOR SEVİYESİNDE SANALLAŞTIRMA
- ÇEKİRDEK BAŞINA 20 VM

## KOLAY YÖNETİM: SYSTEMS DIRECTOR

- KOLAY YÖNETİM ARAYÜZÜ İLE 2 KAT DAHA KOLAY YÖNETİM
- SYSTEMS DIRECTOR ile DAHA AZ YÖNETİM MALİYETİ

# NEDEN IBM POWER SYSTEMS ?

## AYAKTA KALABİLİRLİK

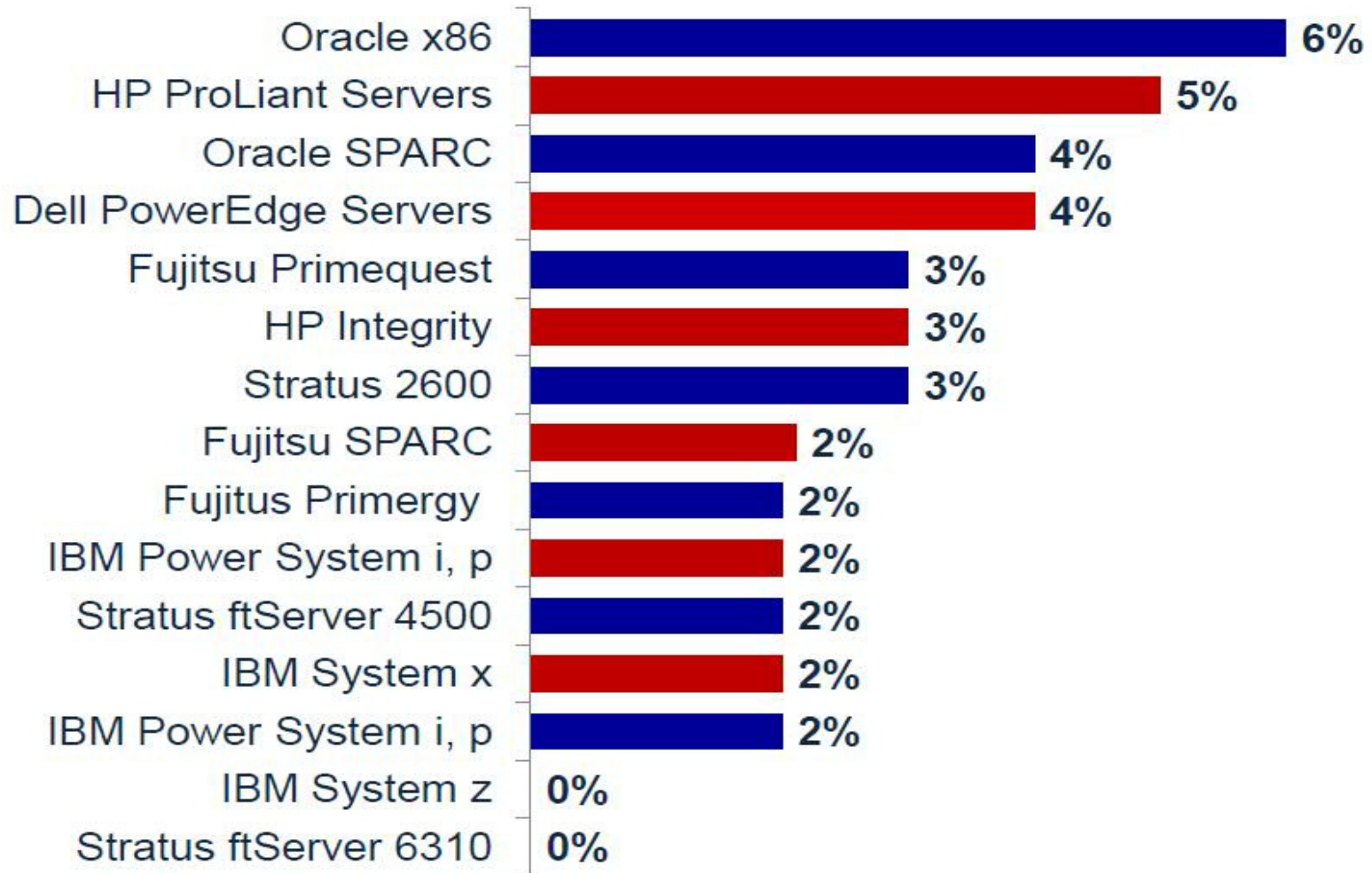
- %99.997 AYAKTA KALABİLİRLİK
- PowerHA CLUSTERING – AIX JFS – GPFS ile SIFIRA YAKIN RİSK, SIFIRA YAKIN KESİNTİ, SIFIR VERİ KAYBI

## ÜSTÜN EKONOMİ İLE HİZMETLERİN SUNULMASI

- EN İYİ ÇEKİRDEK PERFORMANSI
- DAHA DÜŞÜK YAZILIM MALİYETİ
- EN İYİ ÇEKİRDEK / ENERJİ – SOĞUTMA MALİYETİ
- VERİ MERKEZLERİNDE DAHA AZ YER MALİYETİ

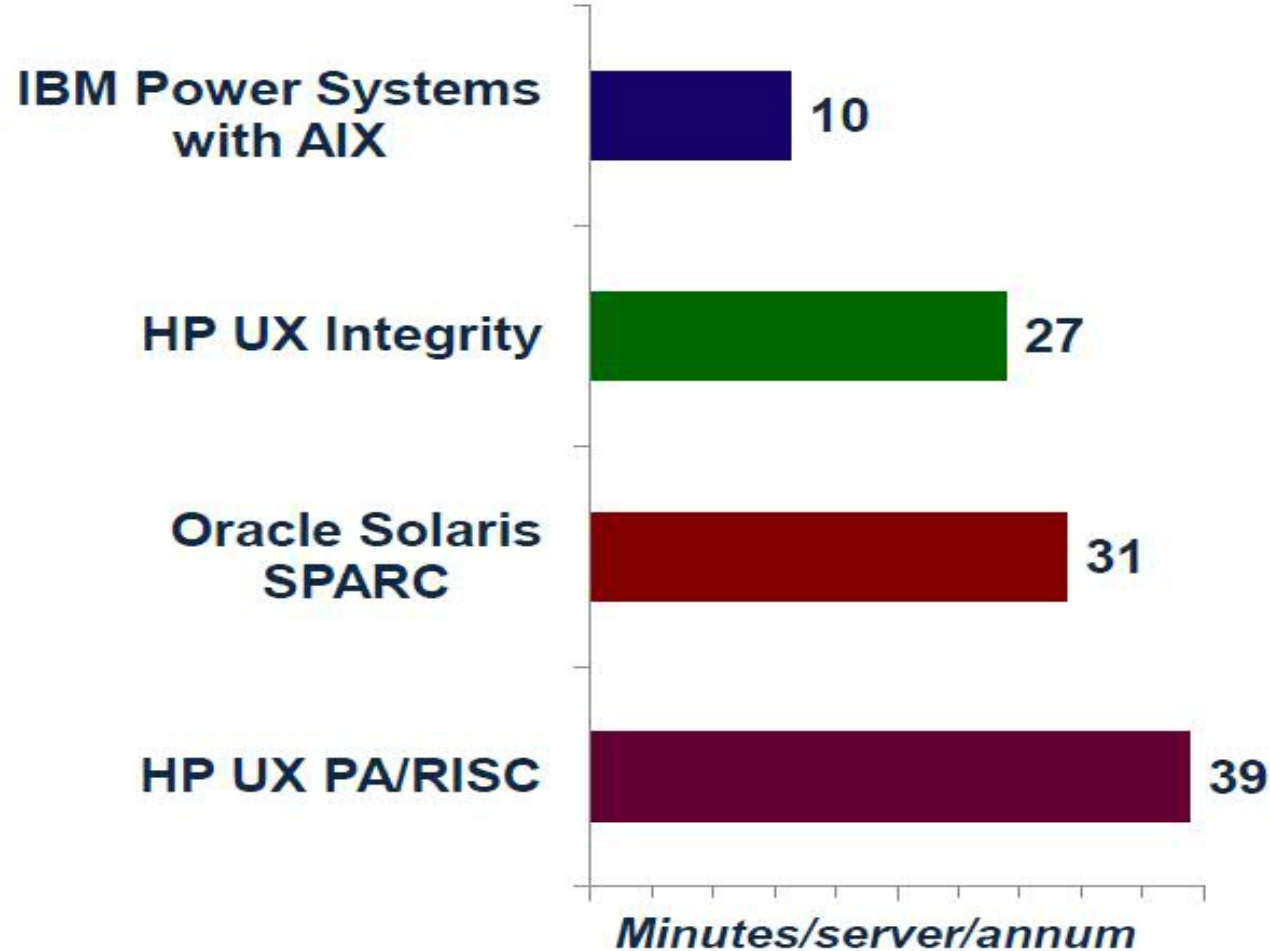
## 2012 – 2013

### 4 SAAT VE ÜZERİ PLANSIZ KESİNTİ / DONANIM



2012 – 2013

## YILLIK PLANSIZ KESINTI SÜRELERİ /DAKİKA





---

# TEŞEKKÜRLER

[kursadm@tr.ibm.com](mailto:kursadm@tr.ibm.com)