

Five compelling reasons to start your mobile transformation

Lars-Olof “Lollo” Allerhed

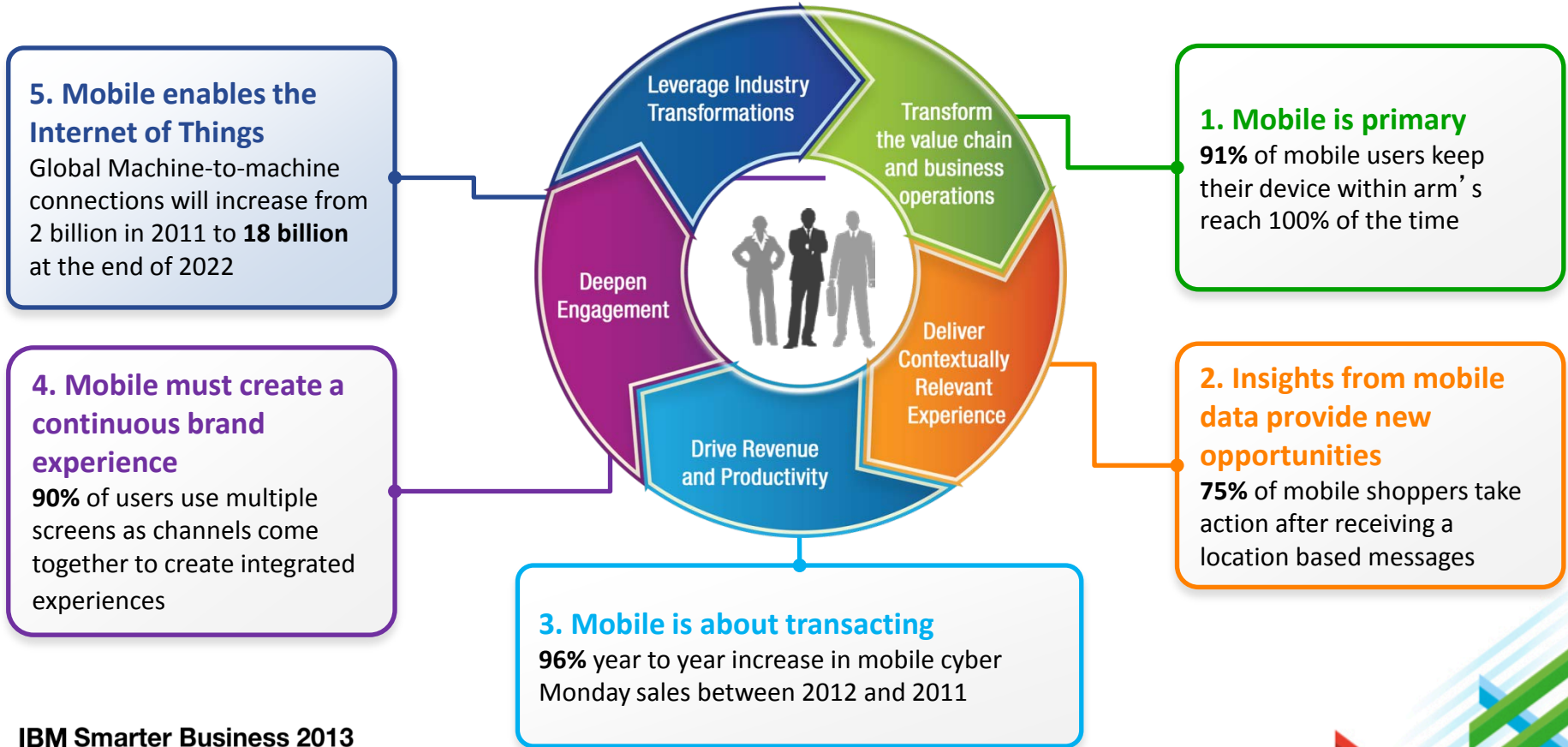
CTO, IBM MobileFirst, Europe



@allerhed #ibmmobile #ibmfi_sb



Five mobile trends with significant implications for the enterprise



CIOs are recognizing the importance of mobile and are under pressure from the CSuite to support mobile initiatives

77%

of CIOs plan to allow staff to use personal mobile devices to access company data and applications.

30%

of CIOs say laptops could be replaced by tablets in the coming years.

41%

of CIOs cite cost as a critical challenge.

25+

Almost all the CIOs said they expect to deploy more than 25 mobility applications in the next two years.

56%

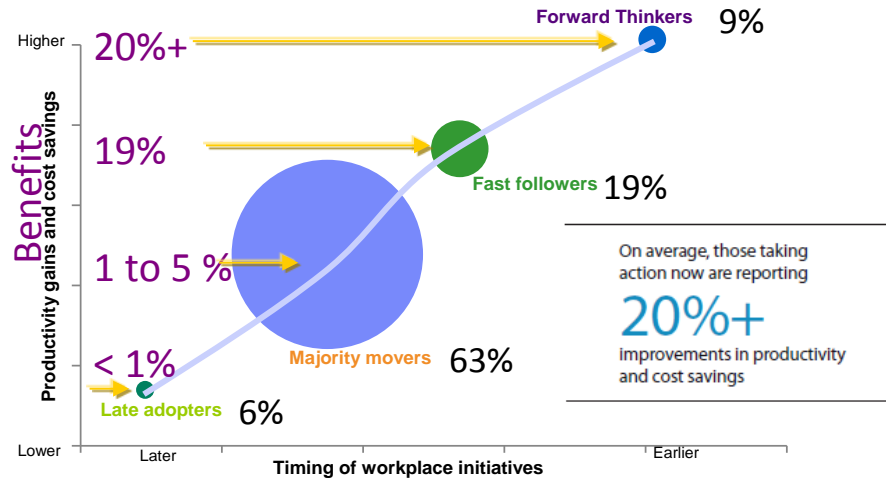
report strong demand from employees to support a wide range of mobile devices.

Mobility is a client investment priority

Mobility is the #1 priority; forward thinking CIOs are:

- Creating a mobility strategy
- Supporting the greatest # of devices and BYOD
- Developing mobile app platform and app stores
- Tendency to buy managed services; outsource
- Deploying Cloud based delivery alternatives
- Evaluating Self service, automation and crowd sourcing support
- Unified communications, collaboration and social networking tools

Reporting 20% improvements in productivity and costs savings



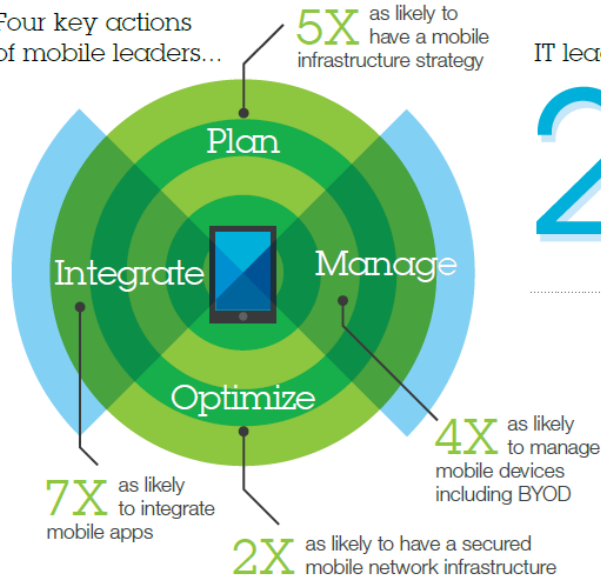
Learn more... click for your copy

Putting mobile first – best practices of mobile technology strategists

Is your IT infrastructure prepared for mobile business?

The IBM Global IT Study on Mobile Infrastructure asked 361 IT decision makers to identify best practices in mobile.

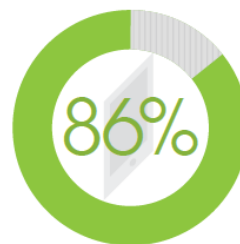
Four key actions of mobile leaders...



IT leaders in mobile are...

2X

- more likely to experience revenue growth of *at least* 10%.
- more likely to get IT budget increase.



of IT leaders in mobile believe that an external IT service provider can help them achieve their mobility goals.

Find out what it takes to be an IT leader in mobile. Pre-register for the publication at <http://bit.ly/studyreq>.

IBM **MobileFirst**



Creating business and IT challenges

Enterprise Business Model Changes

- New business opportunities based upon geolocation
- Anytime, anywhere business transactions
- Importance of social business interactions

App Development Lifecycle Complexity

- Complexity of multiple device platforms with fragmented Web, native, and hybrid model landscape
- Connecting the enterprise back-end services in a secure and scalable manner
- Unique mobile requirements (user interface, connected/disconnected use, version upgrades, etc.)
- Faster time-to-market demands and iterative delivery

Mobile Security and Management

- Protection of privacy and confidential information
- Use of client-owned smartphones and tablets
- Visibility, Security & Management of mobile platform requirements



Top Mobile Adoption Concerns:

1. Security/privacy (53%)
2. Cost of developing for multiple mobile platforms (52%)
3. Integrating cloud services to mobile devices (51%)

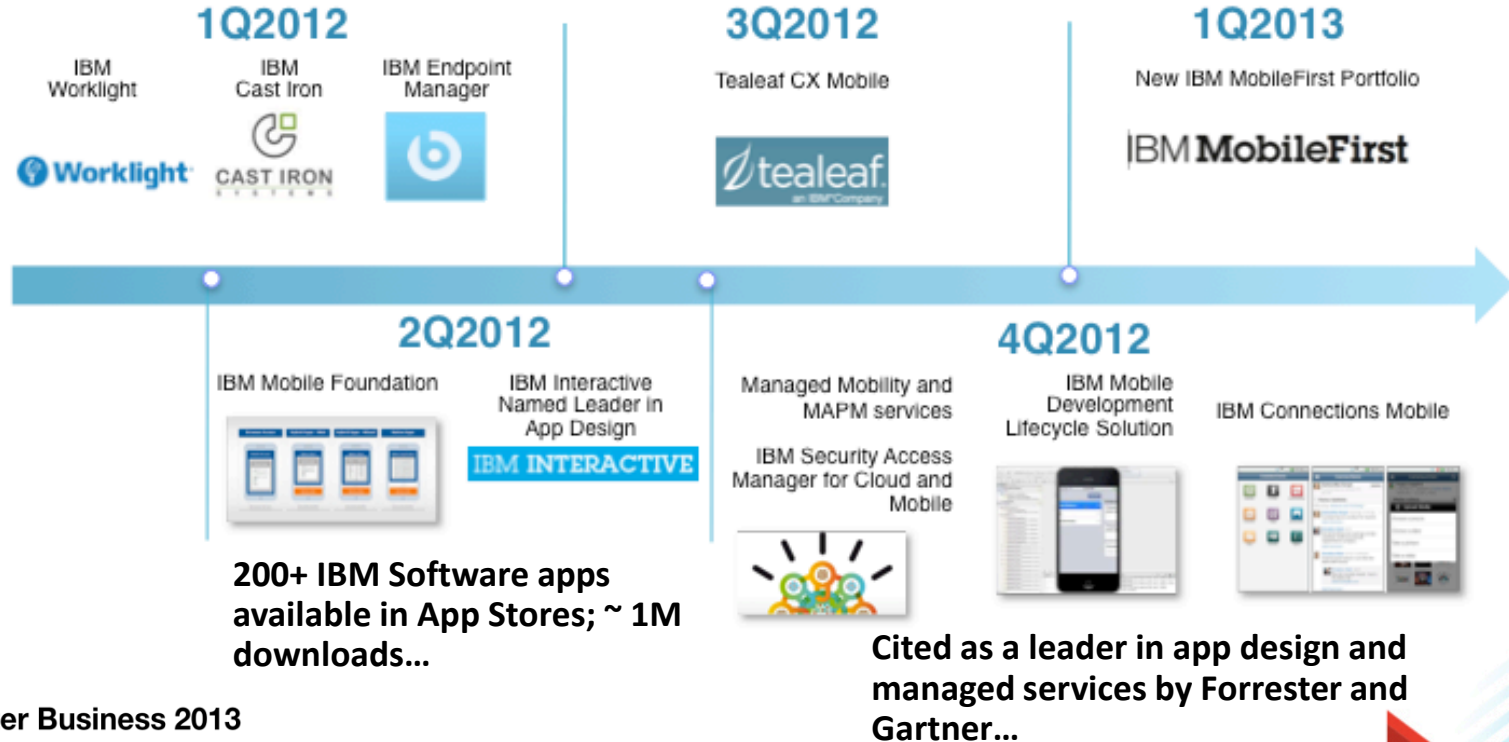
Source: 2011 IBM Tech Trends Report
<https://www.ibm.com/developerworks/mydeveloperworks/blogs/techtrends/entry/home?lang=en>

IBM has been building up our Mobile Enterprise capabilities

10 acquisitions to strengthen our position in mobile since 2006.....

125+ patents for wireless inventions in 2012, bringing the total to 270.....

Doubling 2013 investment



The Industry's Most Comprehensive Mobile Portfolio



1

**The Broadest
Portfolio of
Mobile
Solutions**

2

**The Deepest
Set of Services
Expertise**

3

**New Industry
Partnerships
and Resources
for Developers**

IBM MobileFirst Offering Portfolio



IBM Worklight mobile application platform

Speeding the development, integration and management of mobile applications and infrastructure

Accelerate Development

- Web, hybrid, and native development: open, flexible, standard-based, multi-screen/omni-channel
- Functional testing
- Development lifecycle tools and integration

Facilitate App Security and Trust

- Server-enforced authentication
- App authenticity and user-app-device binding
- Secure and syncable on-device storage
- App version enforcement

Enable User Engagement

- Unified push and SMS notifications
- Geolocation and context collections and intelligence
- Mobile-friendly integration

Support Mobile Analytics

- Efficient acquisition of analytics data
- Development, operational, and business analytics
- Offline and online event management integration

IBM Worklight goes beyond mobile app UI creation to deliver mobile optimized, standards-based, middleware and tools for enterprise-grade mobile applications and services creation

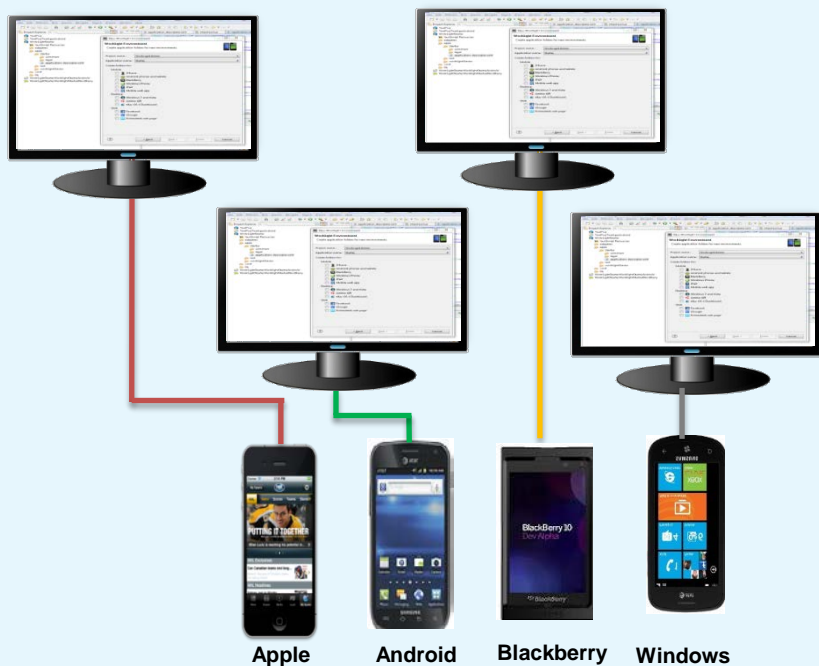


//CODiE//
2013 SIIA CODiE WINNER

Multi-platform development with a shared codebase

From the complexity of many...

- Multiple sets of tools & frameworks
- Four codebases to develop and maintain



To the simplicity of one

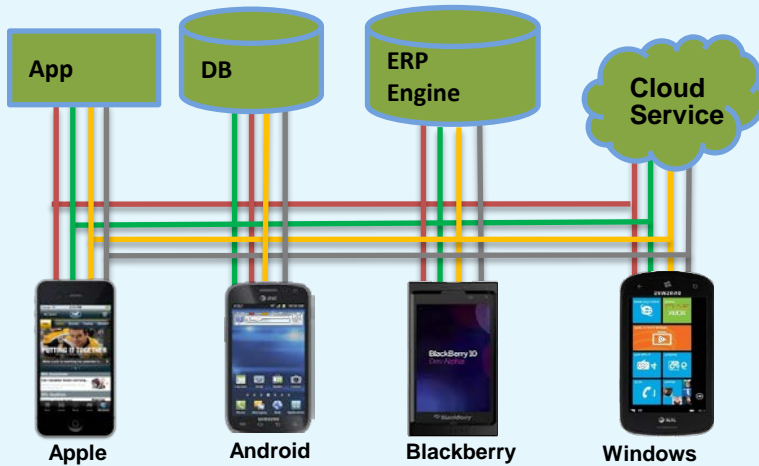
- One development environment
- One codebase to develop and maintain



Controlled back-end integration

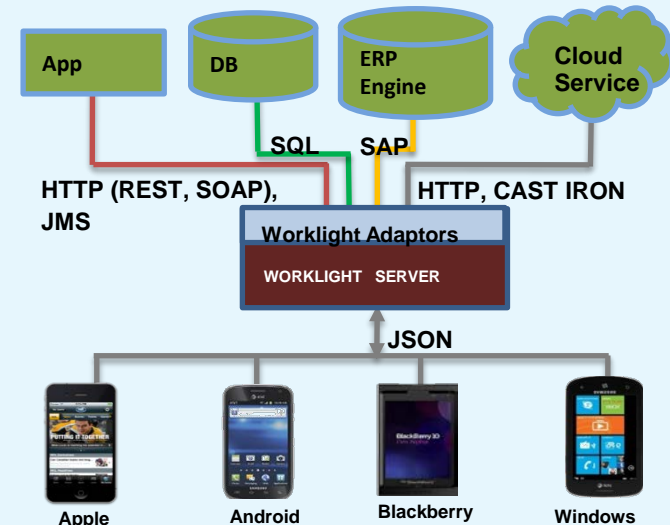
From multiple point-to-point integrations

- Multiple sets of integrations to enterprise resources to build and maintain
- YOU manage caching, synchronization and end-to-end encryption

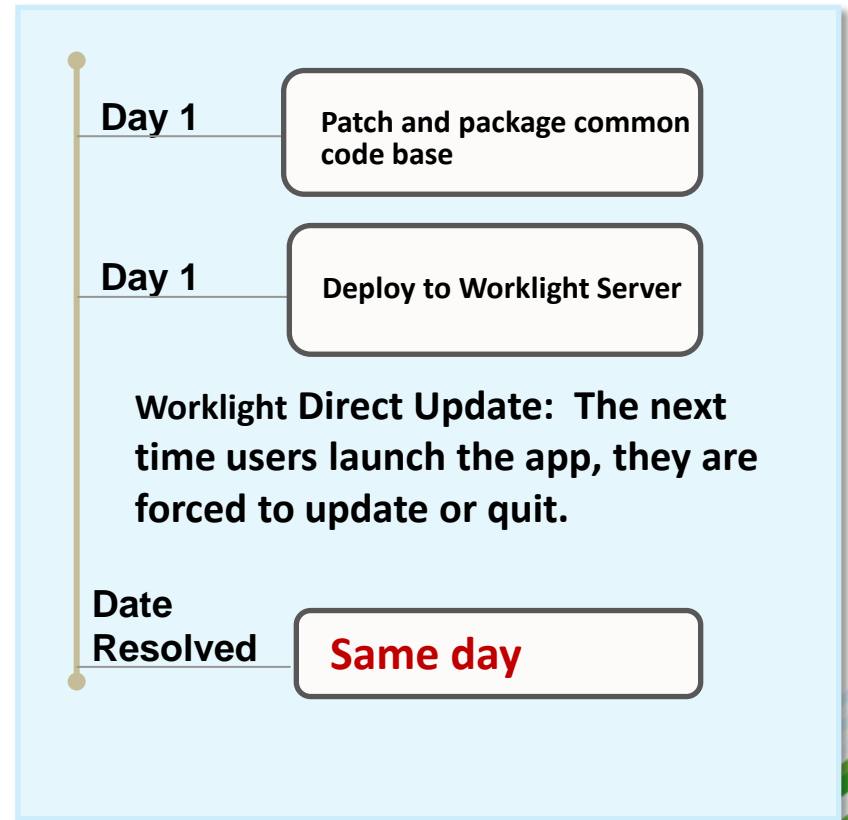
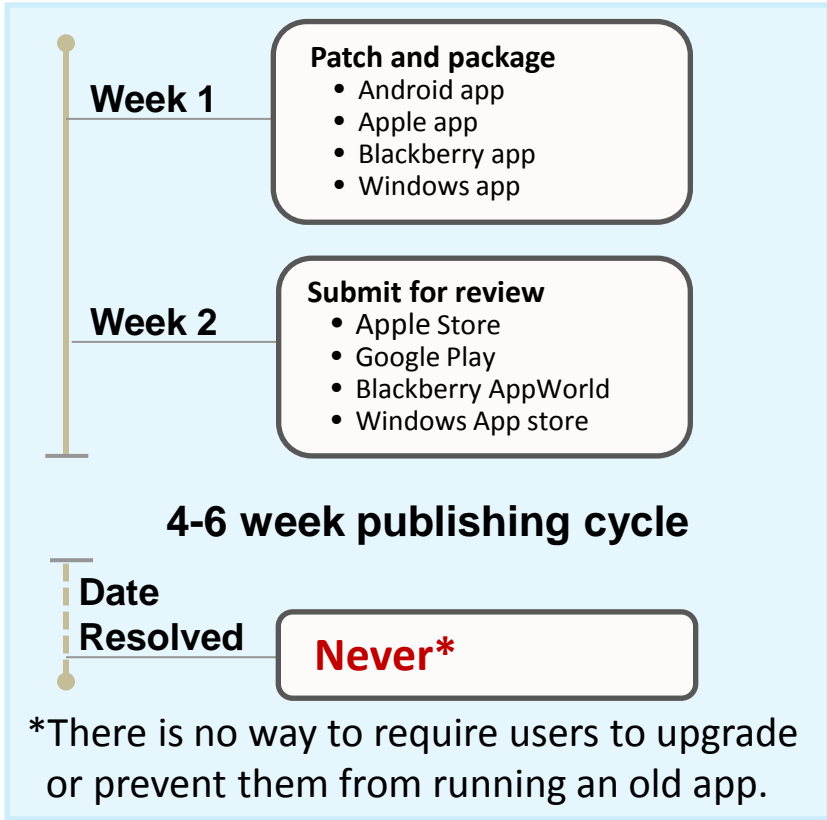


To streamlined, transparent access

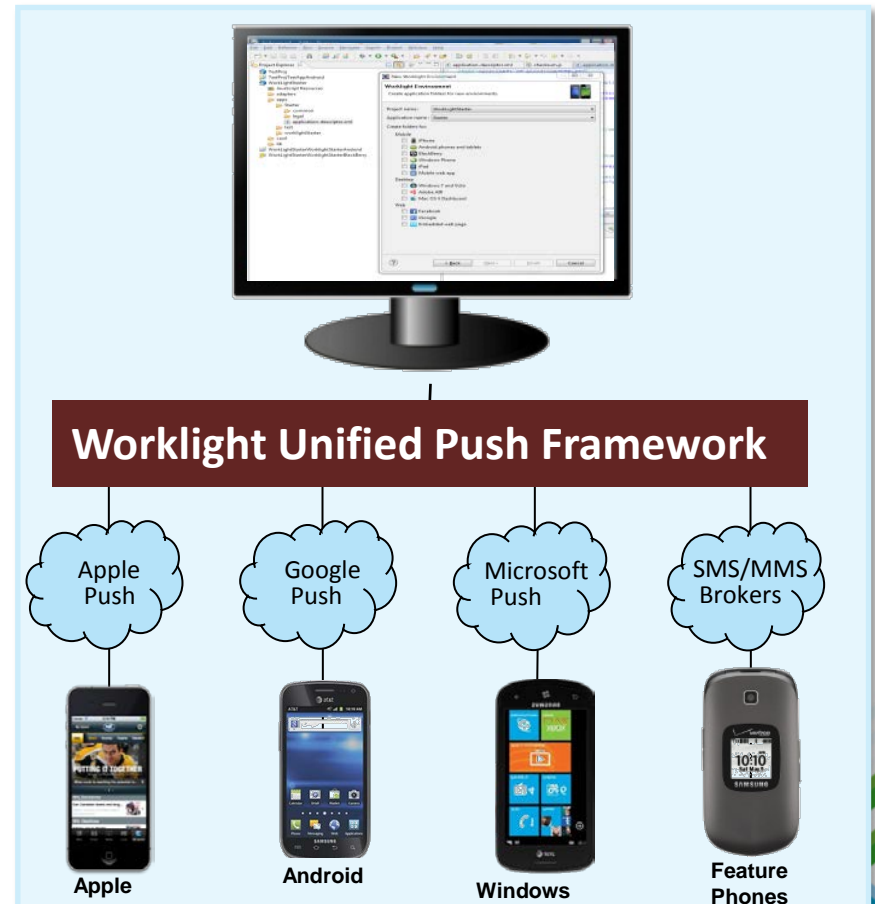
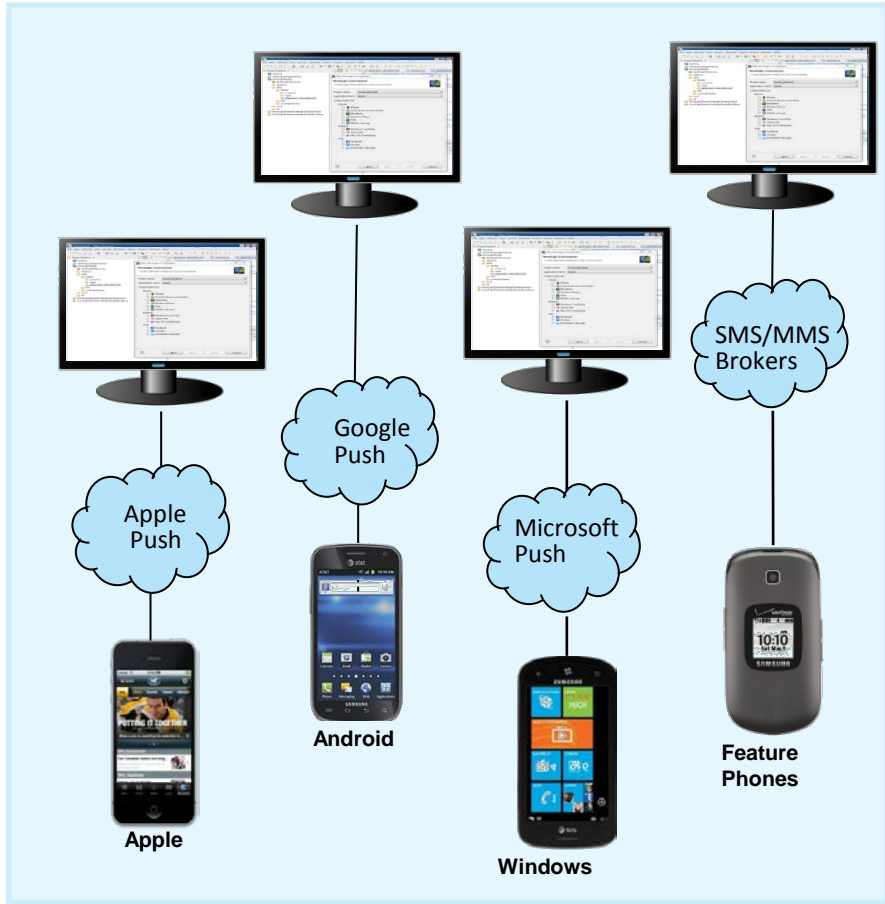
- Worklight transforms enterprise data into mobile-friendly, JSON format
- Worklight Server manages caching, data synchronization and end-to-end encryption



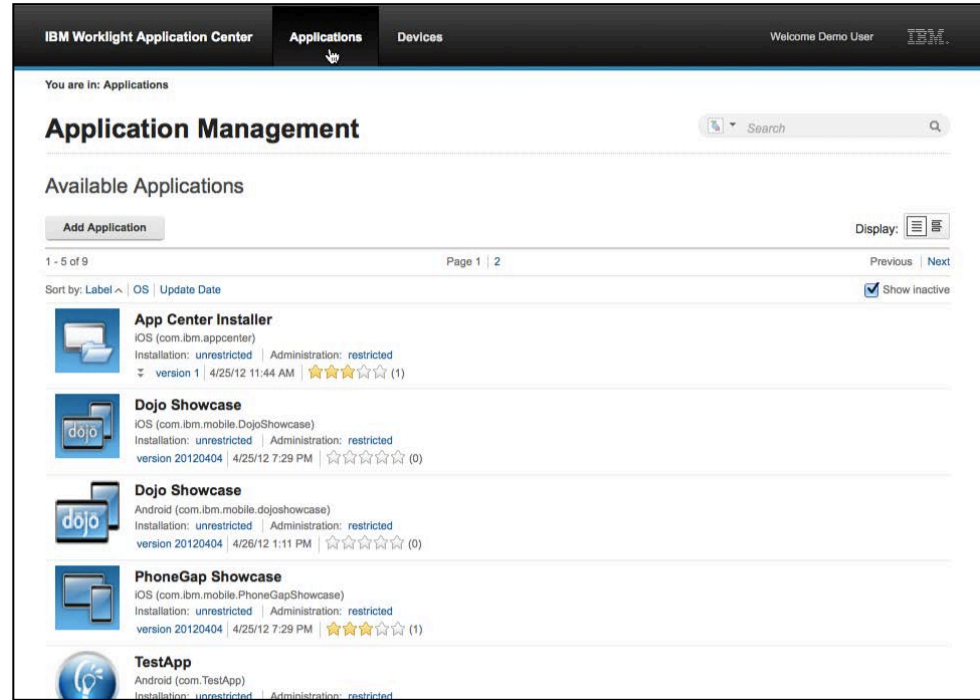
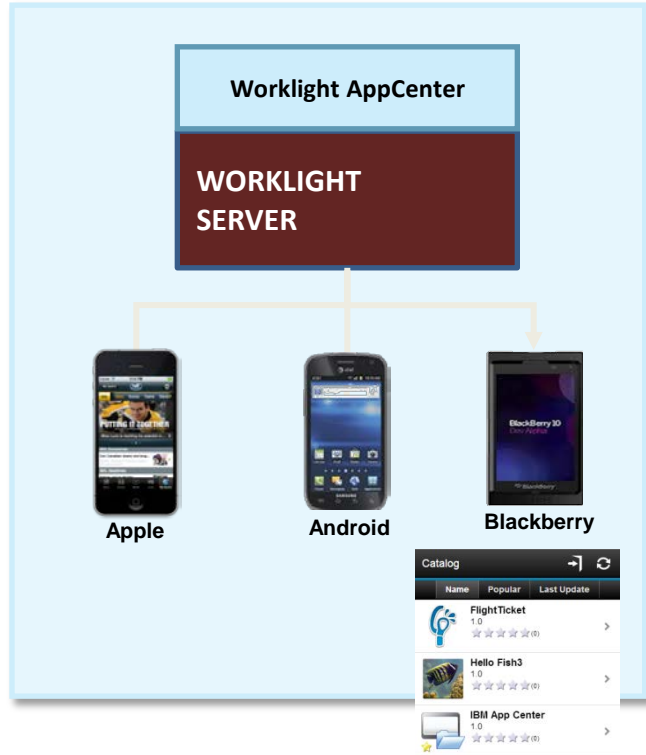
Timely and controlled updates



Centralized push notifications



One App Store for all of your devices



- Efficient deployment of development artifacts to stakeholders for test and feed-back
- Easier employees enablement for up to date mobile apps access
- Advanced control via ACL and LDAP support

IBM's global mobile expertise


Thousands of consultants with mobile solution and managed services expertise



Highlights:

- Thousands of mobility, integrated communications and networking professionals
- 270 mobile patents
- 30+ research labs supporting mobility
- 48 networking delivery and support centers
- 11 mobile enterprise services delivery and support centers
- Customer support in 50 languages
- Global standard processes, tools and measurements

Questions?




Lars-Olof Allerhed
CTO IBM MobileFirst Europe at IBM
Stockholm, Sweden | Information Technology and Services

Current **IBM**
Previous **IBM, Lotus Development, Mora Tech AB**
Education **Dalarna University**

[Edit Profile](#)

500+
connections

se.linkedin.com/in/allerhed [Contact Info](#)



Richard Trojmar 1st
Nordic Leader, IBM Mobile
Stockholm County, Sweden | Computer Software

Current **IBM**
Previous **R2M, IBM, IBM Software Group**
Education **IHM business school**

[Send a message](#)

500+
connections

se.linkedin.com/pub/richard-trojmar/0/745/451 [Contact Info](#)



@allerhed #ibmmobile #ibmfi_sb

