

*Powerful e-business applications for robust
Web environments*



IBM WebSphere Application Server, Advanced Edition

Highlights

Supports high-performance, scalable and medium- to high-level transactional environments

Enables powerful interactions with relational databases, transaction processing systems and other applications

Includes an Apache-based HTTP server and support for other major Web servers, with enhancements for security and control

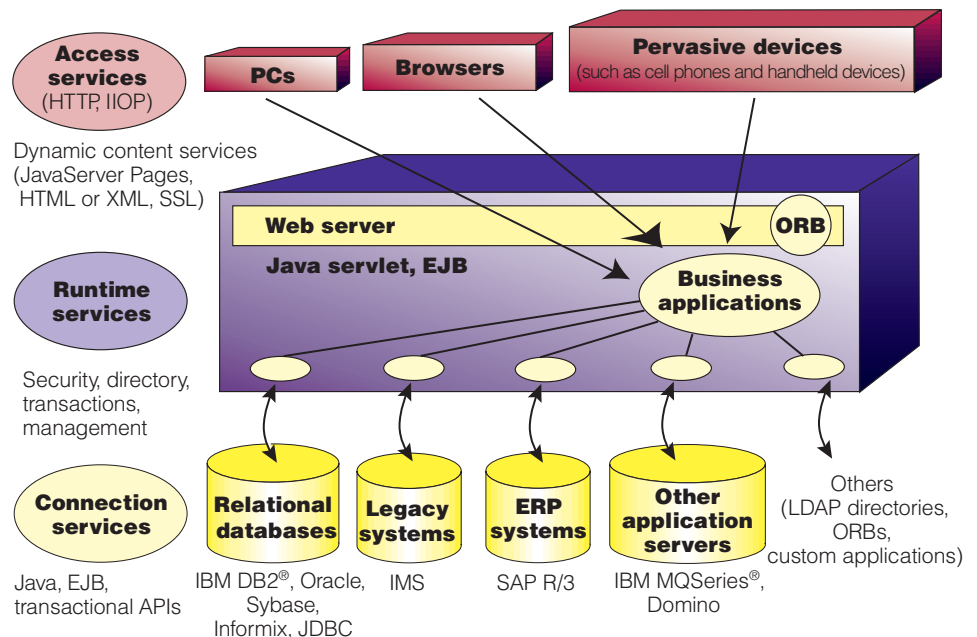
Includes comprehensive Web site content and usage analyzers and reporting tools

Provides deployment and management of Java applications and Enterprise JavaBeans components

Helps reduce the time and associated cost of developing and deploying e-business applications with its support of industry-standard EJB programming models across multiple platforms

Powerful, scalable, secure

With its focus on extensive performance, scaling and security control, IBM WebSphere™ Application Server, Advanced Edition provides a strong cross-platform, Java™ technology-based Web application platform that supports deployment of e-business applications and components—including Java servlets, JavaBeans™, JavaServer Pages™ (JSP™) and Enterprise JavaBeans™ (EJB) components for transactions, enterprise system access and dynamic Web content.



WebSphere Application Server provides extensive performance, scaling and security control for your advanced e-business applications.



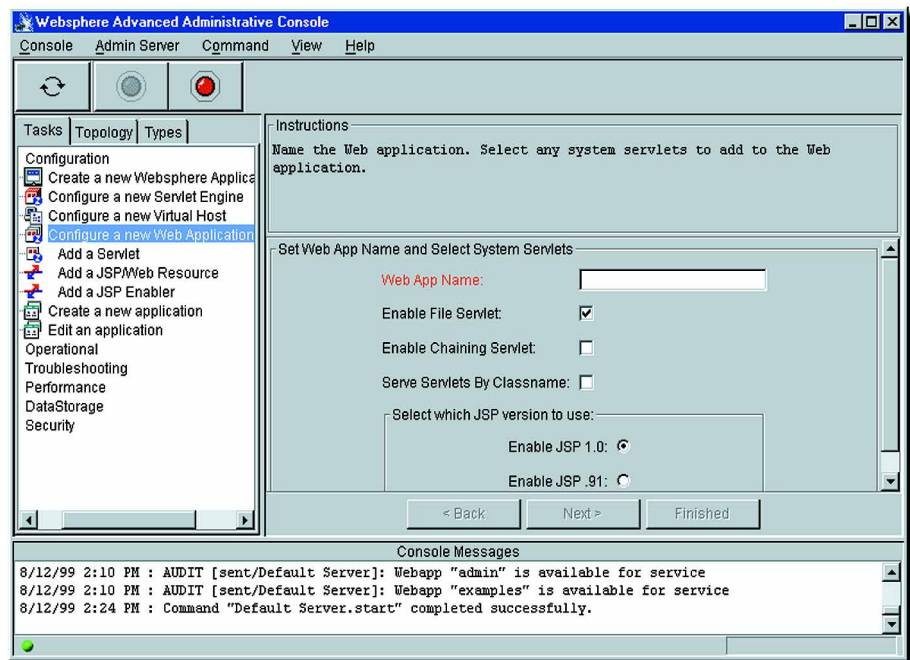
Get your e-business up to speed

Build dynamic Web sites

From design to development to deployment, WebSphere Application Server, Advanced Edition helps you build dynamic Web sites capable of handling your advanced e-business applications.

WebSphere Application Server, Advanced Edition includes many features that combine to make it an easy-to-use, comprehensive Java technology-based Web application platform, such as:

- Enterprise JavaBeans technology and open standards support. Comprehensive support for Enterprise JavaBeans technology and open standards provides a leading-edge foundation for enabling e-business and services.
- XML Document Structure Services support. Support for Extensible Markup Language (XML) Document Structure Services enables e-business applications that interchange data with XML to parse, generate, manipulate and validate content-based XML and Extensible Style Language (XSL).
- Security controls and application access protection. Secure access control lists can be established with more granularity than in the past. In addition to setting up security at the user and group levels, controls and policies can be established for specific calls or methods within the applications themselves, utilizing third-party authentication techniques. This provides much greater depth of control and protection within the server deployment environments.



The graphical user interface makes it easy to create new Web applications.

- Support for user registries based on Lightweight Directory Access Protocol (LDAP). LDAP is an open, vendor-neutral standard that provides an extendable architecture for centralized storage and management of information. LDAP-based directories provide the manageability and security you want to ensure that your information is accessible but still protected. WebSphere Application Server, Advanced Edition includes the IBM SecureWay® Directory Server, as well as the LDAP client interface to other directories.
- Tivoli Ready™ modules. WebSphere Application Server, Advanced Edition contains modules that can be managed by Tivoli® technology-based tools.
- Support for the major HTTP servers. WebSphere Application Server, Advanced Edition includes an IBM HTTP server powered by Apache, and support

for other major Web servers, with enhancements for security, control and machine translation to provide dynamic language translation of Web page content.

- Support for major industry-standard tools. WebSphere Application Server, Advanced Edition provides support for the use and reuse of industry-standard tools to reduce the cost of deploying applications on all WebSphere-compliant platforms.

Transaction management

WebSphere Application Server, Advanced Edition provides deployment and management capabilities for Java applications and EJB components that allow powerful interactions with enterprise databases, transaction processing systems and other applications. Benefiting from IBM's technical innovation, product

leadership and extensive experience in enterprise transaction processing, Advanced Edition can help businesses connect to customers through robust, managed e-business transactions.

Building off the functional base of Standard Edition, Advanced Edition provides additional features to support transaction management, including:

- Complete Java component and Enterprise JavaBeans support. A single, robust server offers better control, more flexibility and better serviceability for the deployment and management of Java servlets, JavaBeans and JSP components and applications built to the EJB specification for execution and transaction management.
- Support for bean-managed and container-managed persistence, with EJB and container services. Container management and persistent storage

(with DB2® Universal Database™, Sybase or Oracle relational databases) help provide a high-performance transactional environment using servlets and EJB components.

- Enhanced protocol and application programming interface (API) support. An integrated Java technology-based Object Request Broker (ORB) within the EJB server provides function for monitoring and controlling containers used within the server. Internet Inter-ORB Protocol (IIOP) support and Remote Method Invocation (RMI) over IIOP support improve object-oriented connections to ORBs, applications and Common Object Request Broker Architecture (CORBA)-compliant objects. Support for the latest Java Database Connectivity (JDBC™) API provides flexible and robust connectivity to remote relational database systems supporting distributed database transactions.

Performance and scalability

WebSphere Application Server, Advanced Edition includes application-

level workload management and clustering, with enhanced container deployment environment services for servlets, EJB and JSP components. Improved transaction management intelligently deploys and executes across multiple applications and components, thereby optimizing object management and performance.

Supported HTTP servers

WebSphere Application Server plugs into the following Web servers:

- Apache Server, Version 1.3.12, or higher, for IBM AIX®, Sun Solaris™, Microsoft® Windows NT® and HP-UX operating environments
- Netscape Enterprise Server, Version 3.5.1, or higher, for AIX, Solaris and Windows NT
- iPlanet Enterprise Server 4.0 for AIX, Solaris, Windows NT, Microsoft Windows® 2000 and HP-UX
- Microsoft Internet Information Server, Version 4.0 for Windows NT
- Microsoft Internet Information Server, Version 5.0 for Windows 2000
- Lotus® Domino™ Application Server, Release 5.0.2b for AIX, Solaris, Windows NT and HP-UX
- IBM HTTP Server, Version 1.3.12 for AIX, Solaris, Windows NT, Windows 2000 and HP-UX

WebSphere software platform: building on a firm foundation

IBM WebSphere Application Server, Advanced Edition is part of the IBM WebSphere software platform—a comprehensive set of integrated, award-winning e-business solutions. No matter where you are in the e-business cycle, the WebSphere software platform allows you to grow—at the speed the market demands. Building on this robust platform, you can connect diverse IT environments to maximize your current investments and leverage existing skills. Deliver your core business applications to the Web using industry standards like Java technology and XML. And create next-generation applications that

IBM WebSphere Application Server, Advanced Edition at a glance

- Minimum system requirements**
- CD-ROM drive
 - 256MB of memory, 512MB recommended
 - 75MB of available space for installation
-

- Minimum software requirements**
- For Version 3.5*
- Windows NT Server, Version 4.0; Windows 2000 Server or Advanced Server, Version 5.0; Solaris, Version 2.6; AIX, Version 4.3.3; or HP-UX 11.0
 - IBM Java Development Kit, Version 1.2.2 for Windows NT and Windows 2000; Sun Java Development Kit, Version 1.2.2 for Solaris; IBM Java Development Kit, Version 1.2.2 for AIX; and IBM Java Development Kit, Version 1.2.2 for HP-UX
 - Support for communication adapter for Windows NT and Windows 2000; support for TCP/IP and an adapter for Solaris; support for network interface for AIX and HP-UX
 - Netscape Navigator, Version 4.07 or Microsoft Internet Explorer, Version 4.01

For Version 3.0

- Red Hat Linux® 6.2 or IBM OS/400®, Version 4, Release 4
 - IBM Java Development Kit, Version 1.1.8 for Linux and OS/400
 - Support for network interface for Linux and OS/400
 - Netscape Navigator Version 4.07 or Microsoft Internet Explorer, Version 4.01
-

differentiate you from the competition. Advance to a powerful platform for integrated e-business—the WebSphere software platform.

For more information

To learn more about IBM WebSphere Application Server, Advanced Edition, visit:

ibm.com/software/websphere/appserv

To learn more about how the IBM WebSphere software platform can help you succeed in e-business, contact your IBM representative, IBM Business Partner or visit:

ibm.com/websphere

To order IBM WebSphere Application Server, Advanced Edition, contact your IBM representative or IBM Business Partner, or call 1 800 IBM-CALL. Or visit the Shop IBM Web site:

ibm.com/shop



© Copyright IBM Corporation 2000

IBM Corporation
Software Communications
Route 100, Building 1
Somers, NY 10589

Printed in the United States of America
06-00
All Rights Reserved

AIX, DB2, DB2 Universal Database, the e-business logo, IBM, MQSeries, OS/400, SecureWay and WebSphere are trademarks of International Business Machines Corporation in the United States, other countries or both.

Domino and Lotus are trademarks of Lotus Development Corporation in the United States, other countries or both.

Tivoli and Tivoli Ready are trademarks of Tivoli Systems Inc. in the United States, other countries or both.

Microsoft, Windows and Windows NT are trademarks of Microsoft Corporation in the United States, other countries or both.

Java, all Java-based trademarks and logos, and Solaris are trademarks of Sun Microsystems, Inc. in the United States, other countries or both.

UNIX is a registered trademark of The Open Group in the United States and other countries.

Linux is a registered trademark of Linus Torvalds.

Other company, product and service names may be trademarks or service marks of others.



Printed in the United States on recycled paper containing 10% recovered post-consumer fiber.



G325-3912-01