



e-business software

The difference
is WebSphere.

What's New: WebSphere Host Integration Solution and Host Access Client Package

Brooke Upton,
Host Access Client Package
Brand Manager

brooke@us.ibm.com

September 20, 2001





e-business software

Session Objectives

- State of the Industry and Opportunity
- WebSphere Host Integration Solution Products Today
- What's New in the WebSphere Host Integration Solution
- What's New in the Host Access Client Package
- What the Analysts are Saying
- How e-business Adoption Can Help You Sell Host Integration
- Resources for WebSphere Host Integration

The difference
is WebSphere.

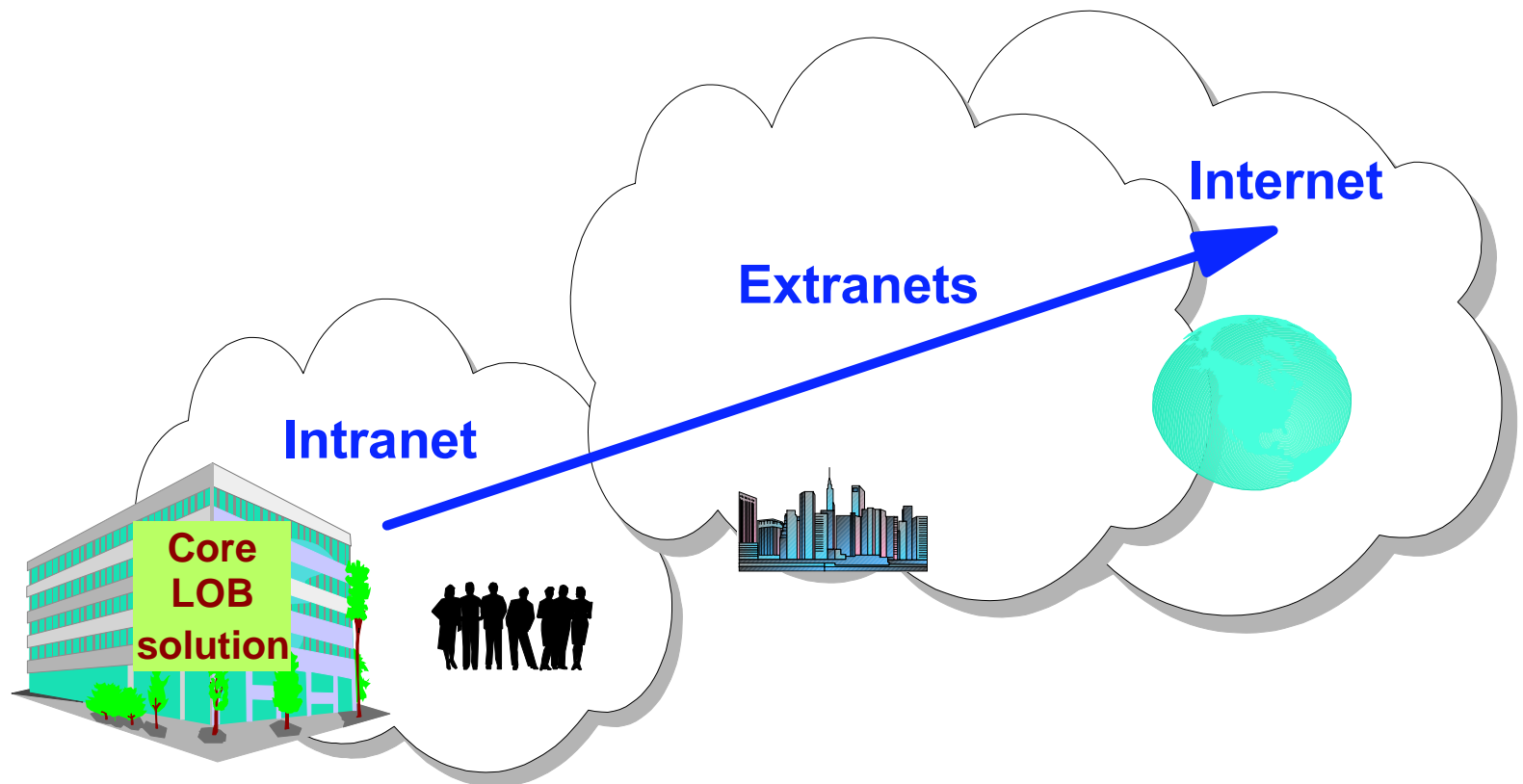
The IBM logo, consisting of the letters 'IBM' in a bold, sans-serif font, enclosed in a black rectangular box.



e-business software

Legacy Integration

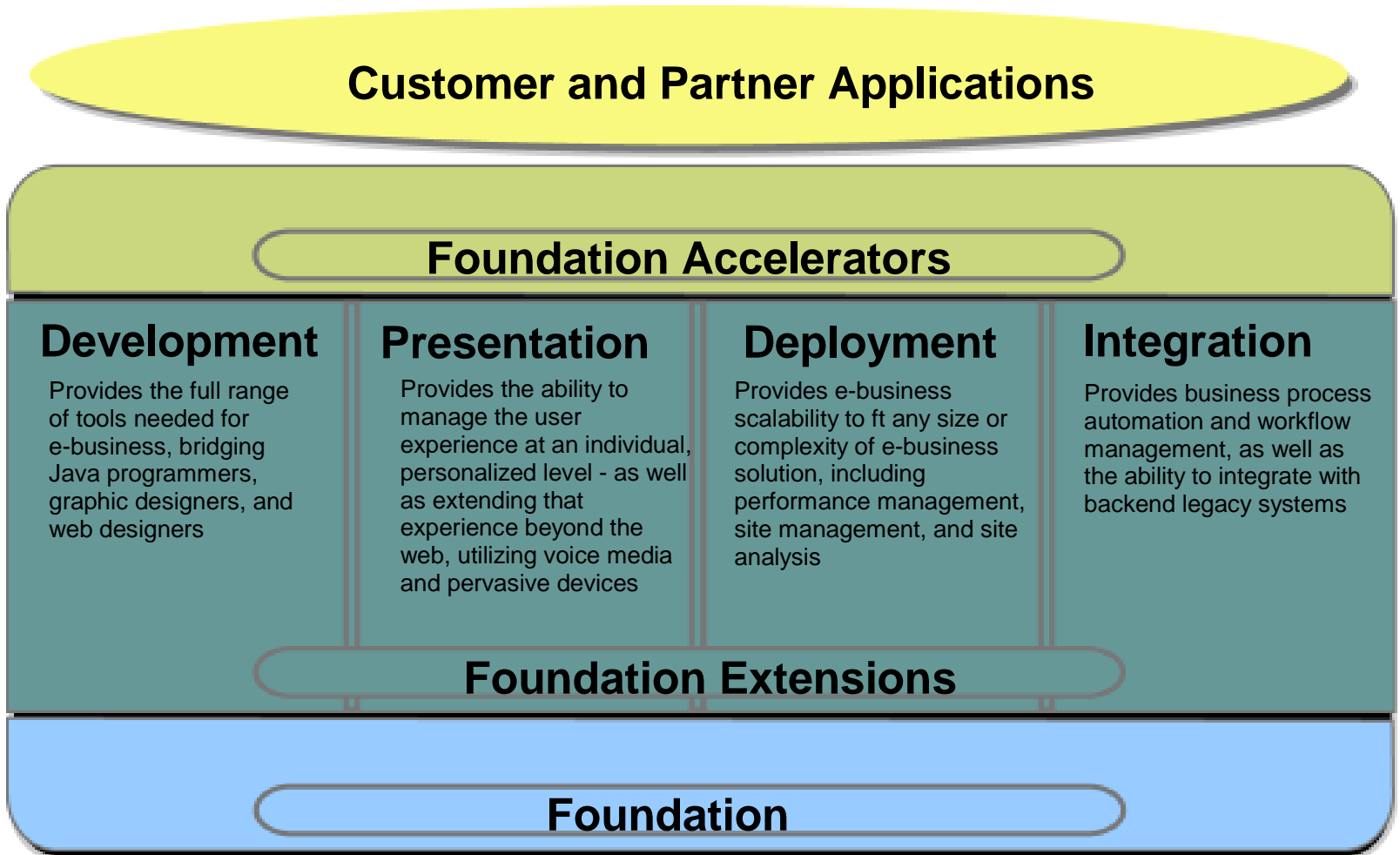
- 70% of applications and data reside on host systems
- A March 2001 eWeek article found 68% of spending is on integration with legacy applications



The difference
is WebSphere.



WebSphere Positioning





e-business software

WebSphere Host Integration Solution Value Propositions

- ✓ You can start simple and grow your e-business fast, leveraging your legacy applications and data with new e-business solutions to maximize your total return on investment.
- ✓ Includes an extensive set of industry standard tools that simplify the creation and deployment of new e-business solutions.
- ✓ Provides the most comprehensive and flexible set of Web to host solutions in the industry for a single price per offering.

The difference
is WebSphere.





e-business software

WebSphere Host Integration Solution Products Today

✓ **Personal Communications**

professional emulation (fat client) that allows you to access the mainframe

✓ **WebSphere Host On-Demand**

Browser-based emulator installed on a server and accessed from a Web Browser (thin client)

✓ **Screen Customizer**

a simple graphical user interface using drag and drop technology.

✓ **Communication Servers**

SNA Gateways, TN3270E and TN5250 servers, security and support, optional carriers for Host Publisher

✓ **WebSphere Host Publisher**

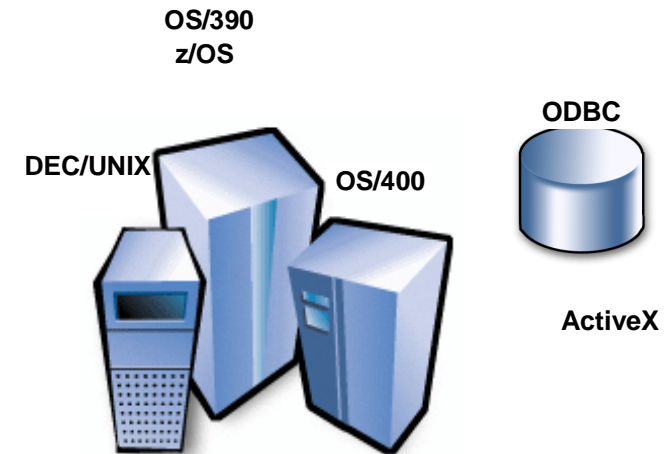
for existing application integration from multiple sources to an HTML/XML interface

✓ **Host Access Toolkit**

Host Access Beans for Java, Host Access Class Library, tools for host integration into application development projects

✓ **WebSphere Application Server, Advanced Edition**

A Powerful deployment environment for Java applications and components.



• **Value**

- Help protect and extend investment
- Improve user productivity
- More secure, scalable, multi-platform
- Fast, low risk and low cost way to integrate host with the Web
- Leverage the WebSphere Software Platform solutions

The difference
is WebSphere.

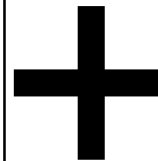
WebSphere Host Integration Solution Offering

Host Access Client Package:

Personal Communications

Host On-Demand

Screen Customizer



Host Publisher

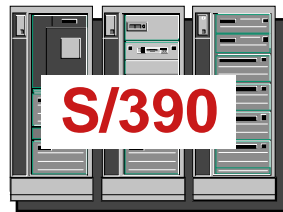
Communications Server

WebSphere Application Server
Advanced Edition

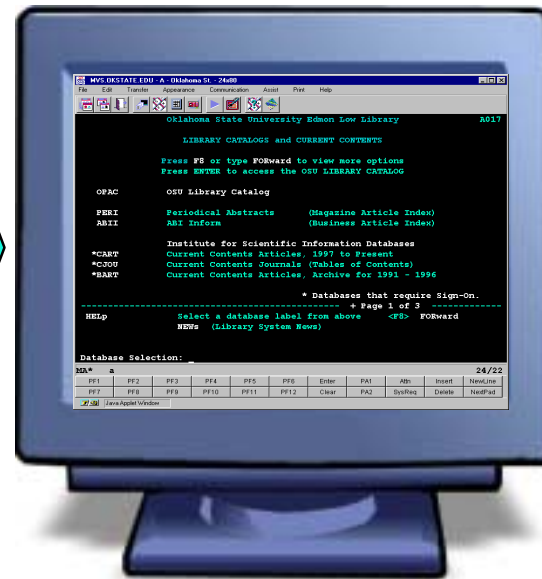
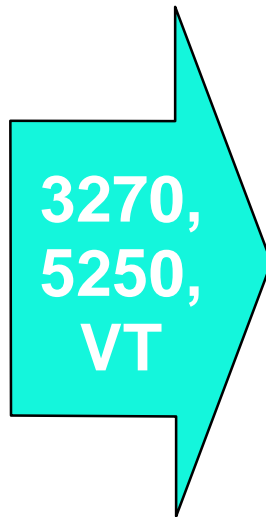
- ✓ Provides clear migration path as customers grow their e-business
- ✓ Simplifies creation and deployment of advanced e-business applications
- ✓ Leverages features of WebSphere software platform to enable customers to respond quickly to new market needs

The difference
is WebSphere.

Personal Communications



DEC/UNIX



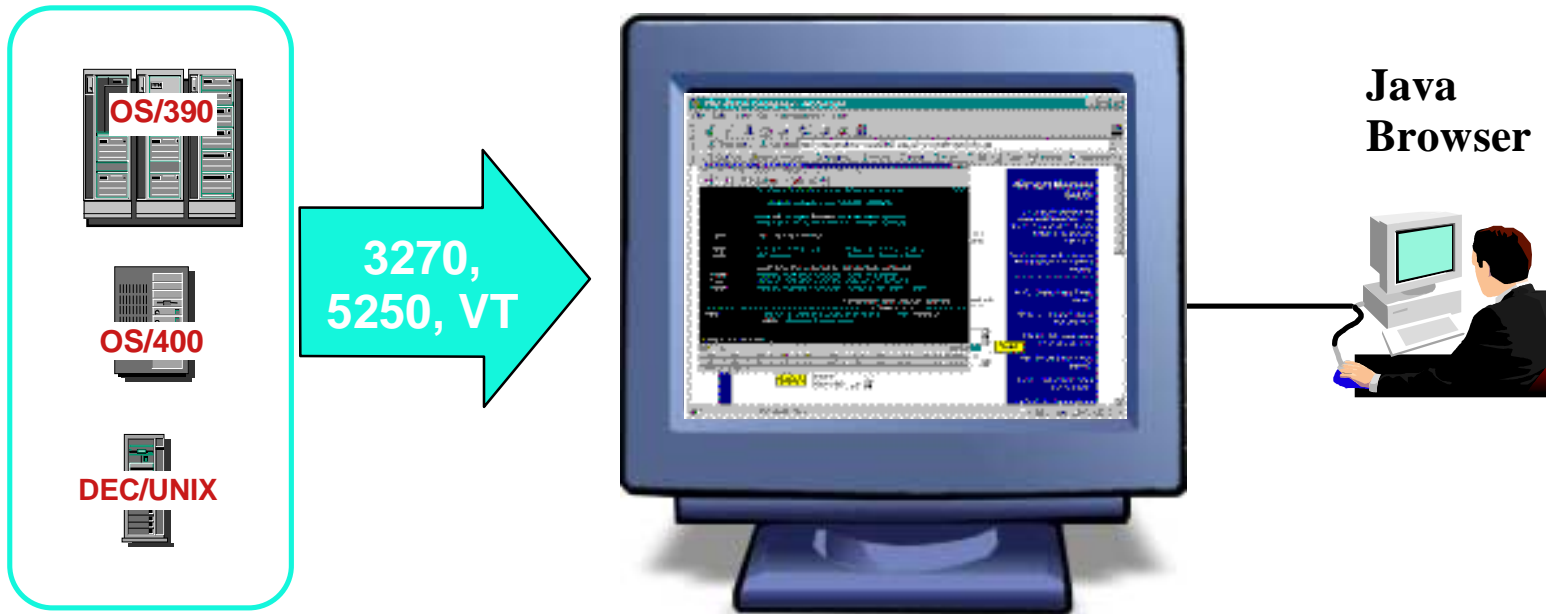
Traditional Terminal Emulation Solution

- Industry leading emulator
- Greatest breadth of terminal emulation function
- Supports Win32, Windows 2000 and OS/2 clients



e-business software

WebSphere Host On-Demand

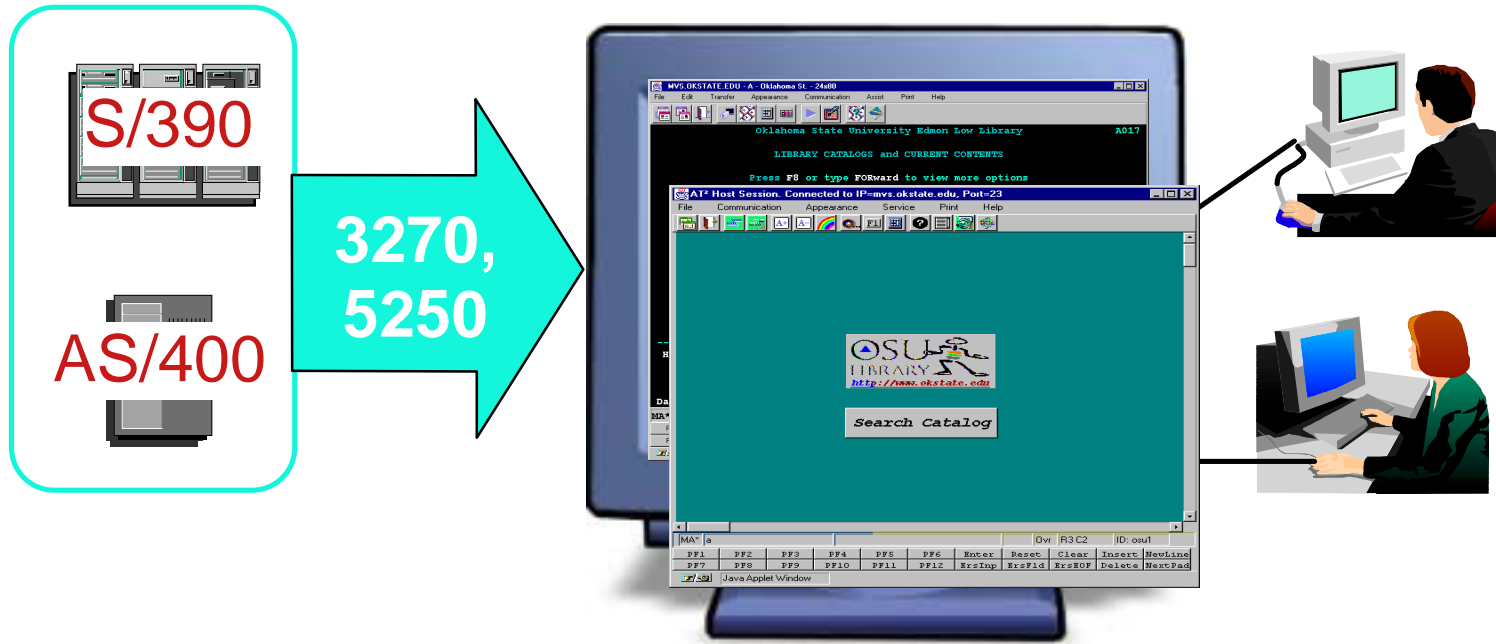


Web-to-Host Terminal Emulation Solution

- Award-winning, Industry leading browser-based emulator
- Extends host application reach to new users
- Reduces I/T costs through centralized install and administration
- Supports client and server platforms of choice
- Requires no middle-tier runtime server
- SSL, Client Authentication and Smart Card support

The difference is WebSphere.

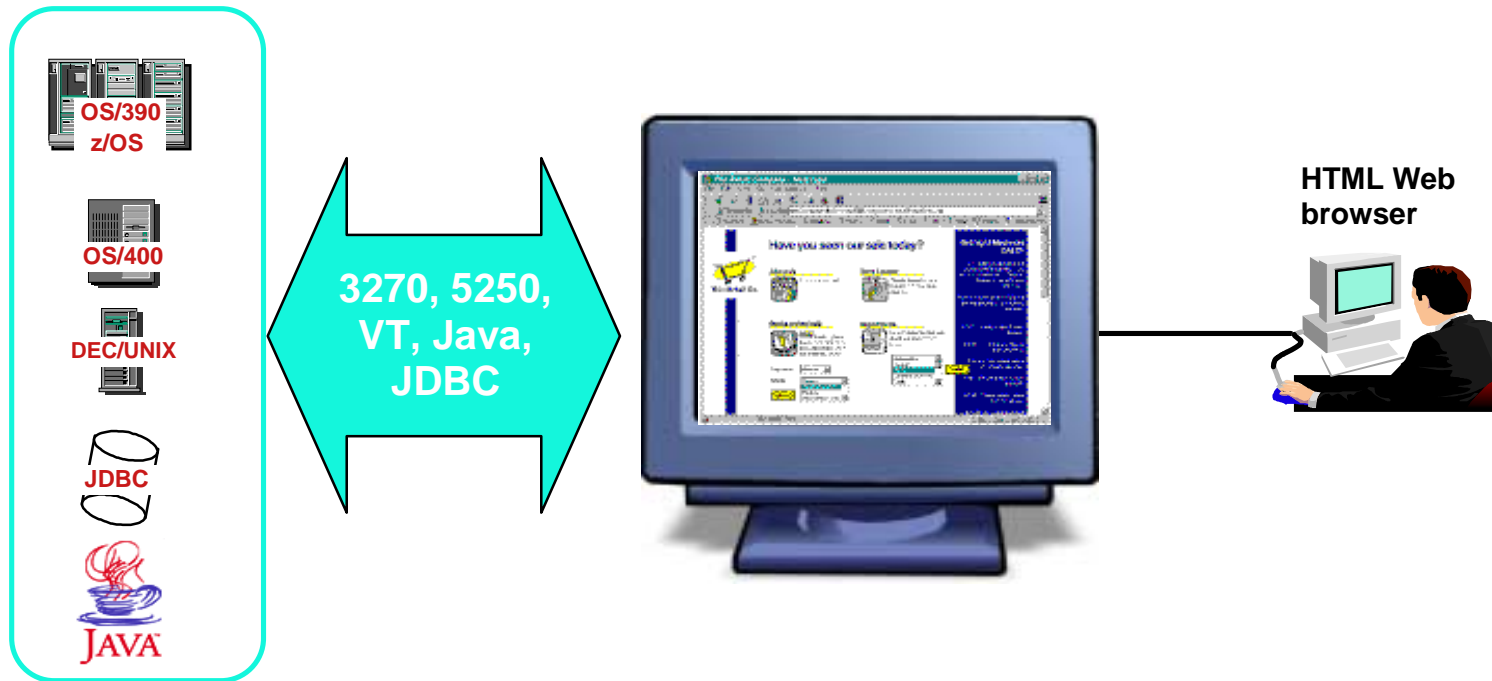
Screen Customizer



Host Application Rejuvenation

- Creates a simple GUI using drag and drop technology
- No programming required
- Works in conjunction with Host On-Demand
- No changes to host application needed

Host Publisher



- Extends host applications to web browser users and new e-business applications
- Integrates multiple backend sources into custom HTML web pages
- Encapsulates Host Access into reusable Integration Objects
- Supports XML access to host applications
- Protects and leverages existing I/T investments

What's New

	2001 Enhancements	Date Available
WebSphere Host Integration Solution Offering V2.5	<ul style="list-style-type: none"> • WebSphere Application Server Advanced Edition 3.5 is now is both the concurrent and registered offerings. • Host Publisher, Host On-Demand, Screen Customizer and Personal Communications products updated. 	9/28/01
Host Access Client Package for Multiplatforms V2	WebSphere Host On-Demand V6.0 Screen Customizer V2.0.60 Personal Communications V5.5	9/28/01
Host Access Client Package for iSeries V2	WebSphere Host On-Demand V6.0 Screen Customizer V2.0.60 Personal Communications V5.5	9/28/01
Host On-Demand Portlet with WebSphere Portal Server	New "wrapper" that enables Host On-Demand to run inside WebSphere Portal Server	9/28/01
WebSphere Host Publisher	<ul style="list-style-type: none"> • Exploitation of WebSphere Application Server Advanced Edition - Workload Manager support • Enterprise Java Beans can now be developed for use in more advanced e-business application development projects. • Host Publisher Studio productivity improvements. 	6/29/01



e-business software

The difference
is WebSphere.

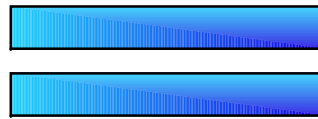


Host Access Client Package V2: Product Enhancements



One Stop Shopping for Emulation

IBM Host
Access
Client
Package



Personal Communications
Host On-Demand
Screen Customizer

- Only complete emulation and screen rejuvenation solution in the market
- Offers convenience to migrate to Web at own pace
- Create a simple graphical user interface to a host application using drag and drop technology
- Registered user pricing



e-business software

Host On-Demand ... "Green Screen"

OS/400 - A

File Edit Transfer Appearance Communication Assist Print Help

Jump Same Exit Send Recv Copy Paste PrtScrn Remap Color Keypad Play Record

Sign On

```

System . . . . . DEMO400B
Subsystem . . . . . QINTER
Display . . . . . QPADEV0006

User . . . . . _____
Password . . . . . _____
Program/procedure . . . . . _____
Menu . . . . . _____
Current library . . . . . _____

```

(C) COPYRIGHT IBM CORP. 1980, 1999.

MA a 06/053

PF1	PF2	PF3	PF4	PF5	PF6	Enter	PA1	Attn	Insert	NewLine
PF7	PF8	PF9	PF10	PF11	PF12	Clear	PA2	SysReq	Delete	NextPad

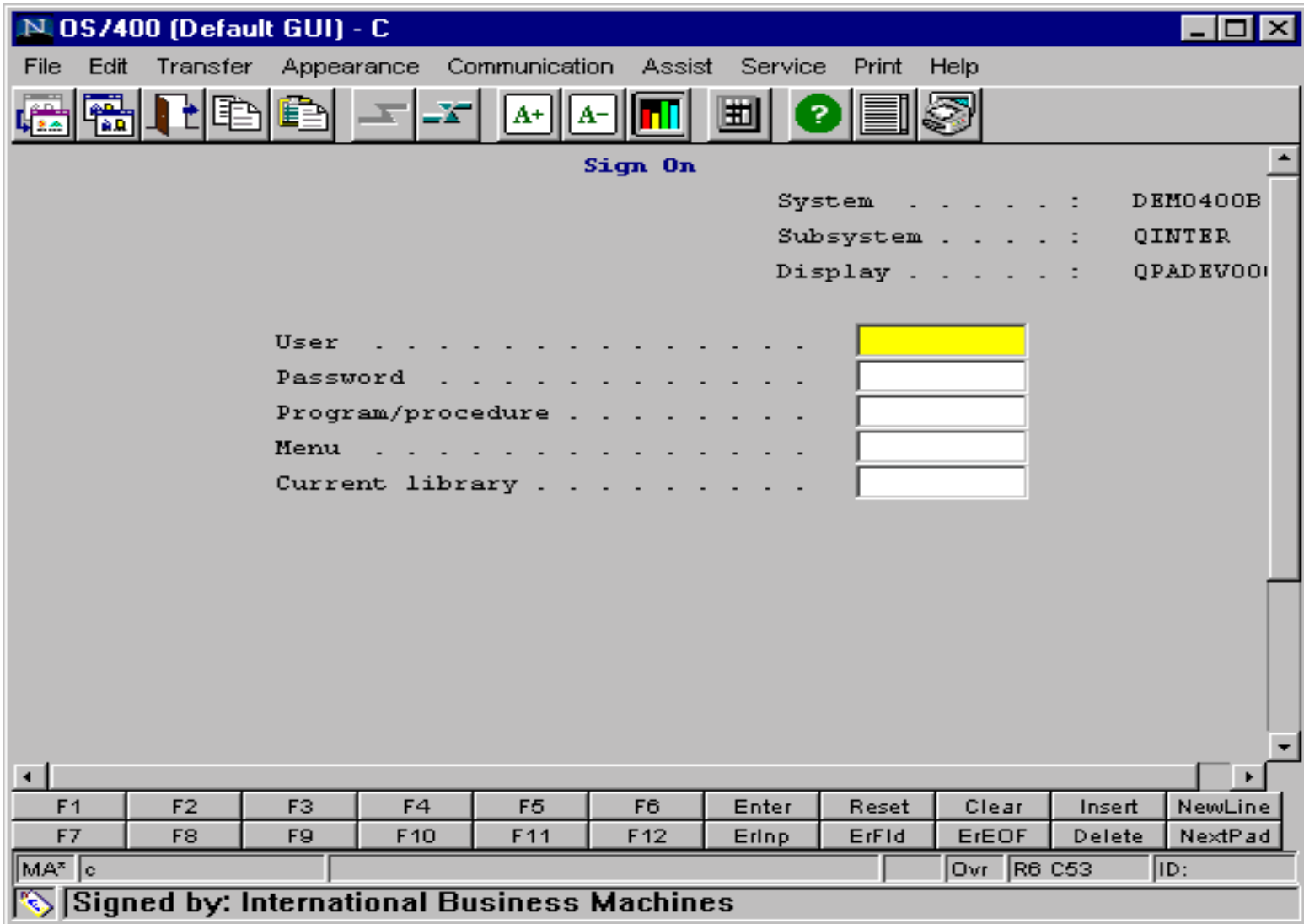
Connected demo400b.dfw.ibm.com:23

Signed by: International Business Machines

The difference is WebSphere.



Host On-Demand ... Default GUI



Host On-Demand with Screen Customizer

The difference is WebSphere.



The screenshot shows a web browser window titled "JK Toys - OS/400 - A". The browser's menu bar includes "File", "Edit", "View", "Communication", "Actions", and "Help". The toolbar contains various icons for navigation and editing. The main content area features a banner for "JK Toys" with the tagline "The coolest toystore around!". Below the banner, the text "Product Inventory Search" is displayed. A button labeled "Enter" with a play icon is positioned below the search text. On the right side, there is a small graphic for "IBM WebSphere Software" showing a globe and a cube. The browser's status bar at the bottom shows the address "demo400b.dfw.ibm.com:23" and other technical details like "Ovr R9 C53 ID: 41 so".



e-business software

Host Access Client Package V2

Product	Availability
<p>HACP V2: Personal Communications for Windows V5.5 Personal Communications for OS/2 V4.3.1 WebSphere Host On-Demand V6 Screen Customizer V2.0.60</p> <p>HACP V2 for iSeries: Personal Communications for Windows V5.5 Personal Communications for OS/2 V4.3.1 WebSphere Host On-Demand V6 Screen Customizer V2.0.60</p>	<p>September 25, 2001 Announce</p> <p>September 28, 2001 GA</p>

The difference
is WebSphere.





e-business software

HACP for iSeries

- **Keeps IBM cost competitive in SMB markets**
- **Increases HACP revenue opportunity**
- **Better migration path for Personal Communications for iSeries customers**

The difference
is WebSphere.





e-business software

The difference
is WebSphere.



Host On-Demand Portlet

- **The portlet is a 'wrapper" that enables Host On-Demand to run inside of WebSphere Portal Server**
- **It will be available as a download from the WebSphere Portal Server site at the end of September**



The difference is WebSphere.



HACP V2: Host On-Demand V6 Enhancements

Windows Exploitation

Enhancement	Benefit
Native Windows Print	Provides users with more Windows-like printer support and the ability to make property changes without closing the 3270 printer session.
Windows NT/2000 Domain Single Sign-On	Ability to authenticate HOD users using their Windows logon user ID.

Management and Deployment Flexibility

Enhancement	Benefit
Deployment Wizard Enhancements	Useability improvements make administration simpler.
Copy Sessions from Users/Groups	Administrators can easily copy sessions.

End User Productivity Enhancements

Enhancement	Benefit
Customized Toolbar	Create buttons to run applets, macros, etc.
Enhanced Local Preferences	Administrator can define centrally stored preferences AND user can adopt individual preferences.

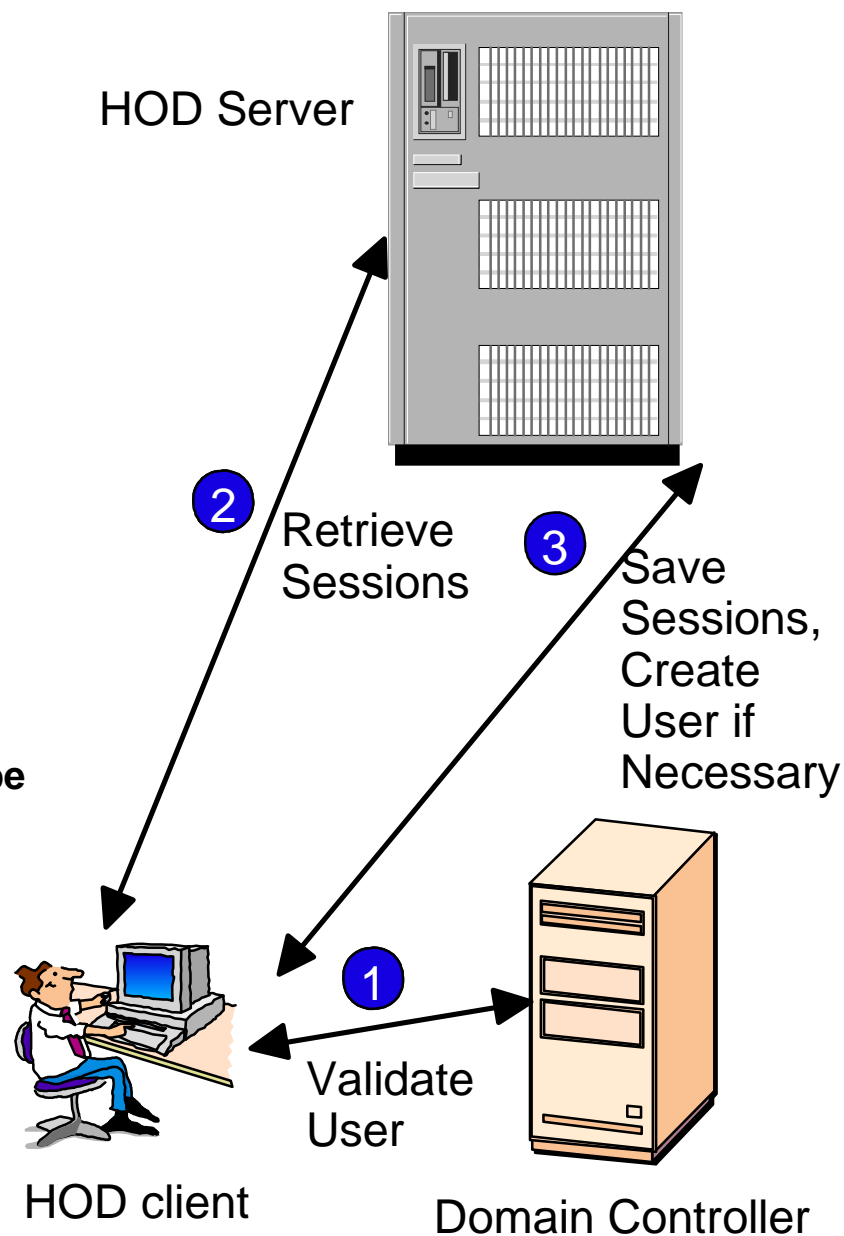
Technology Enhancements

Enhancement	Benefit
Netscape 6 Support	Compatibility with Netscape 6 and the Sun Java 2 Plug-in.
JVM 1.3 Support	Compatibility only with JDK 1.3. No Java 2 exploitation.

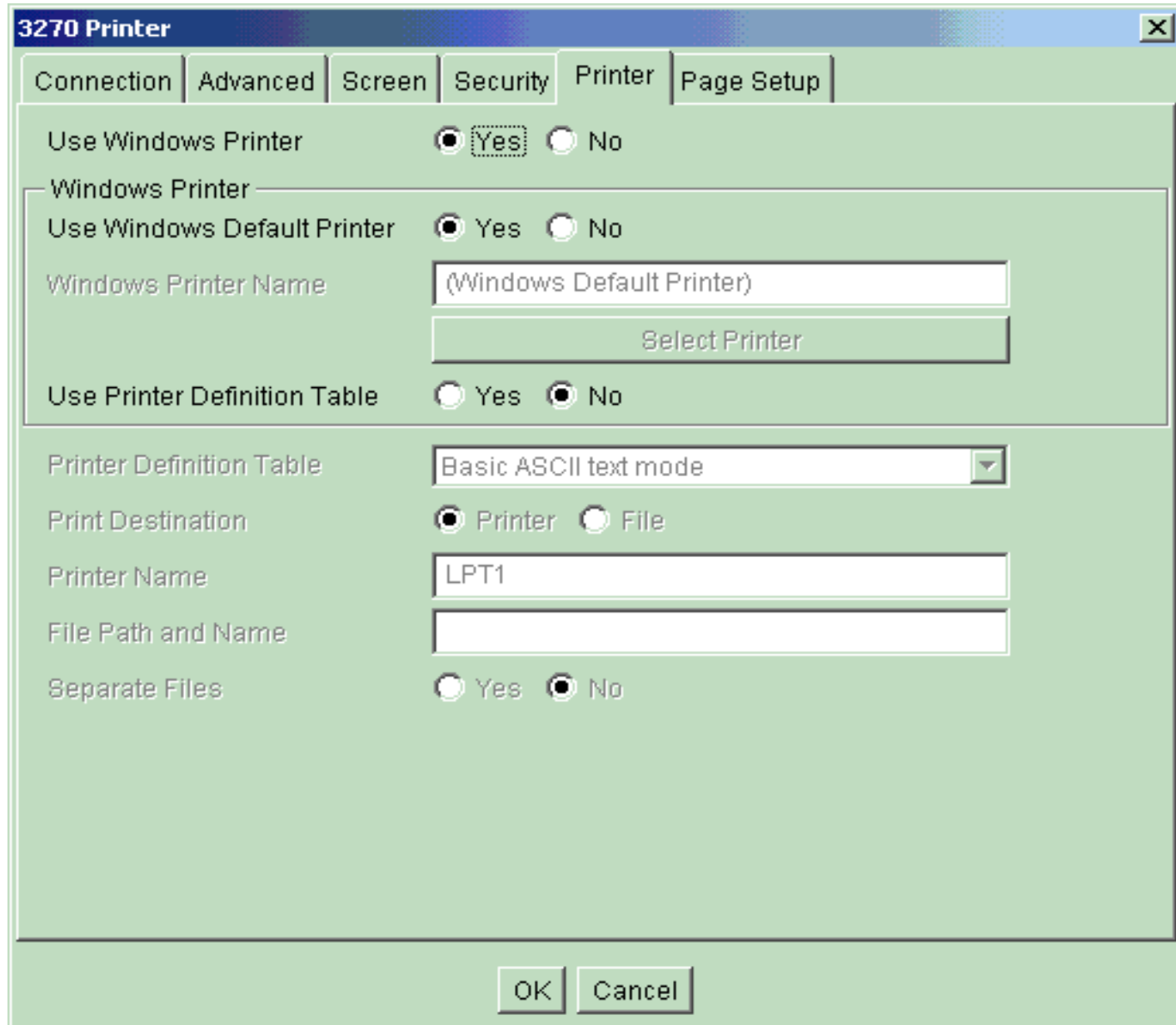


Windows NT/2000 Single Signon Operation: Administrator Choices

- **Do not automatically create HOD userids**
 - ▶ Applet will query Windows ID and Domain
 - ▶ If Domain doesn't match, not authorized message will appear
 - ▶ Lookup corresponding HOD userid
 - If not found, issue message
 - If found display user's sessions
- **Automatically create HOD userids**
 - ▶ HOD user ID does not exist
 - Check Domain and HOD user ID
 - Userid doesn't exist so display group sessions
 - Create HOD user ID if anything needs to be saved
 - ▶ HOD userid exists
 - Check Domain and HOD user ID
 - Display user's sessions



Native Windows Printing - Configuration



The screenshot shows the '3270 Printer' configuration dialog box with the 'Printer' tab selected. The dialog has several sections for configuration:

- Use Windows Printer:** Yes No
- Windows Printer:**
 - Use Windows Default Printer:** Yes No
 - Windows Printer Name:** (Windows Default Printer)
 - Select Printer:** [Button]
- Use Printer Definition Table:** Yes No
- Printer Definition Table:** Basic ASCII text mode [Dropdown]
- Print Destination:** Printer File
- Printer Name:** LPT1 [Text Field]
- File Path and Name:** [Text Field]
- Separate Files:** Yes No

At the bottom of the dialog are 'OK' and 'Cancel' buttons.



Deployment Wizard Enhancements

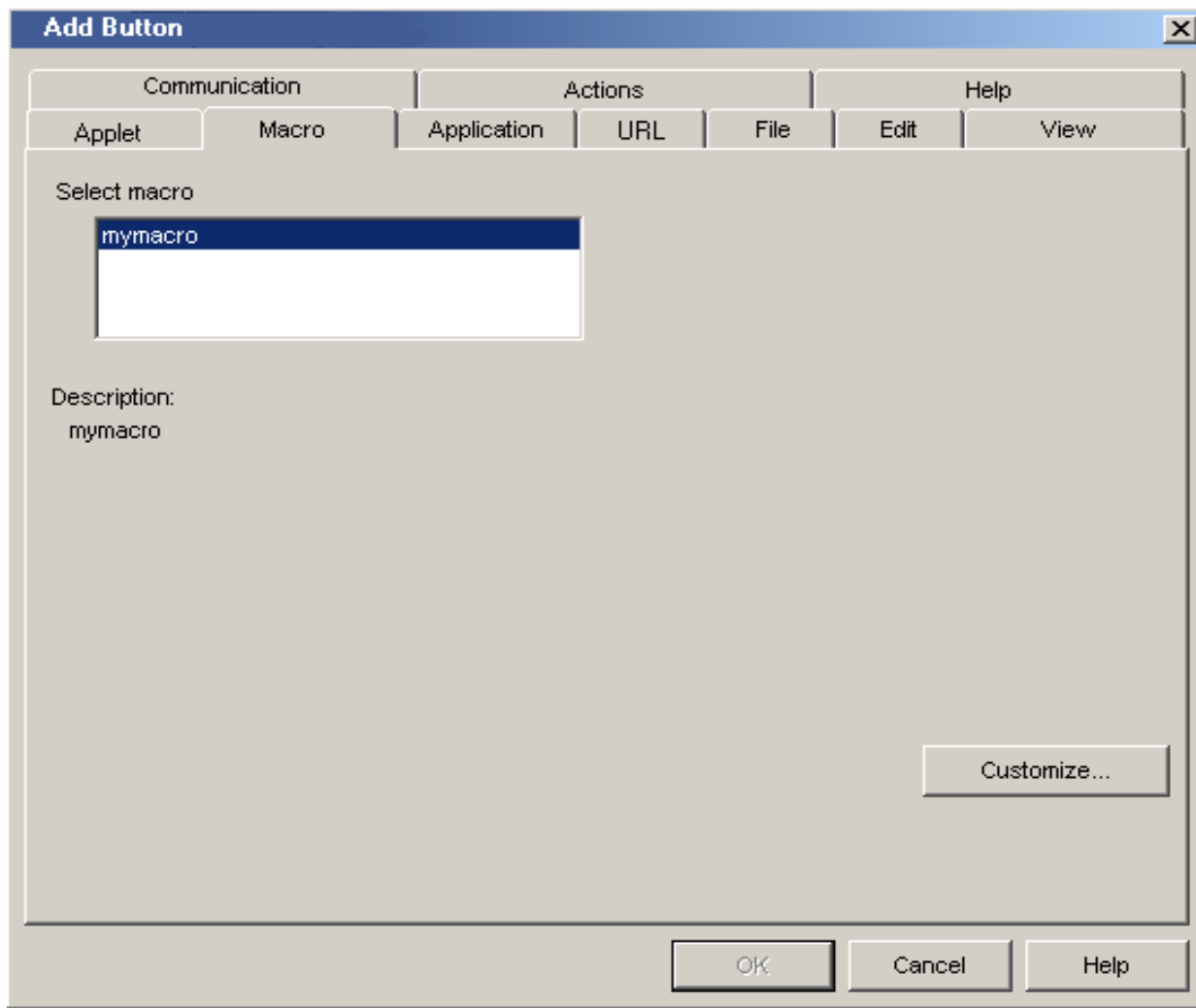
- **Enhanced usability**
- **Easier to configure**
- **Streamlined panel flow**
 - ▶ **Advanced features have defaults and are not part of the main panel flow**
- **Additional configuration parameters**



Customizable Toolbar

It is now possible to customize the HOD toolbar:

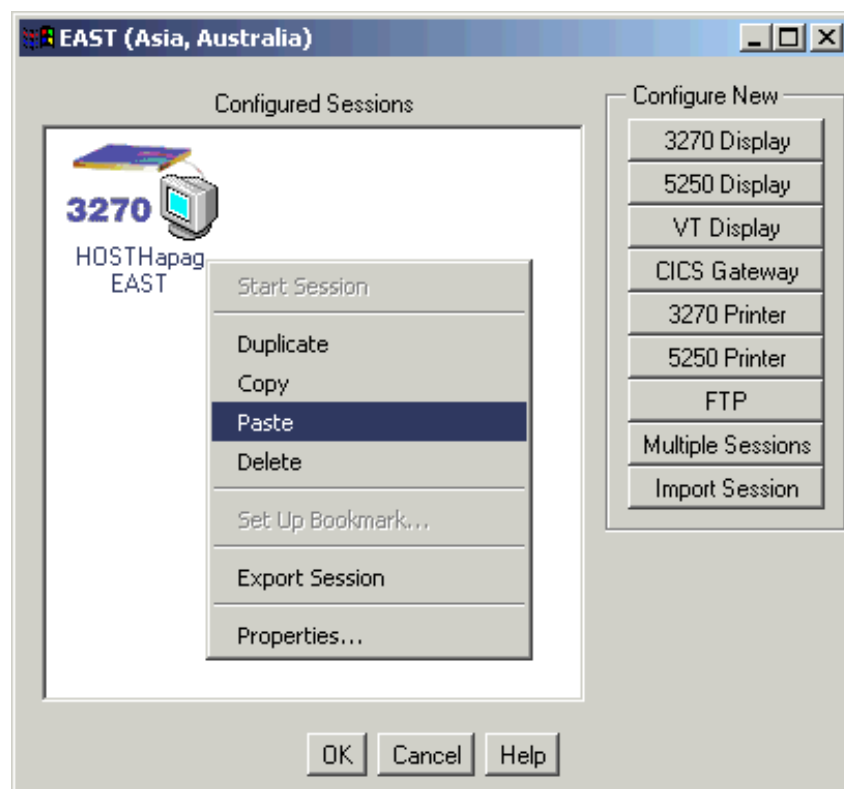
- Custom buttons
 - Add
 - Edit
 - Remove
- Popup menu
- Default
- Save settings





Copy/Paste Sessions

- Add the ability to highlight a session, copy it to a clipboard, navigate to the session panel for another user or group and paste the session.
- Makes problem of creating a group session with runtime attributes easier by avoiding need for export/import.





Locally Stored Preferences

- **No user IDs to create**
- **No Host On-Demand logon by the user**
- **Base configurations are merged with user changes**
- **Key configuration parameters are locked**



e-business software

Cached Client Support Across the Internet

- **Host On-Demand keeps the cached components at a consistent level**
- **It now prevents users from installing different and potentially conflicting versions of components from different servers**
- **Clients can communicate with servers running different levels of Host On-Demand**

The difference
is WebSphere.

The IBM logo, consisting of the letters 'IBM' in a bold, sans-serif font, enclosed in a black rectangular box.



e-business software

Additional Host On-Demand V6 Enhancements

- **Support for Java2-enabled browsers**
- **JVM 1.3 support on the Host On-Demand server**
- **Tab to next word and delete word**
- **Problem determination enhancements**
- **User-defined character mapping editor for DBCS environments**
- **Basic GB18030 Chinese code page support**

The difference
is WebSphere.





HACP V2: Personal Communications V5.5 Enhancements

Enhancement	Benefit
Windows 2000 Certification	Provides users with the Windows Installer and new default directory.
Macro Conversion to HOD	Macros created in PCOMM can be used in HOD.
Express Logon Function	Eliminates need for users to enter ID and password when logging onto host system. Communications Servers for AIX, NT, Windows 2000 and OS/2 WARP support this feature.
Smart Card Support	Allows you to store a certificate in a dedicated security device such as a smart card. You can keep the certificate in a local or network-accessed file, in PKCS12 or PFX format, or in a URL, protected by a password.
Associated 3270 Printer Support	Administrators can choose to determine which LU users utilize.

The difference is WebSphere.





e-business software

Personal Communications: Now Windows 2000 Certified!

- **InstallShield for Windows Installer**
- **New Default Directory**
- **Now following Microsoft's recommendations for placement of files and directories**
- **No shortcuts on Start menu, desktop like HOD instead**

The difference
is WebSphere.





What the analysts are saying...

- **New research from the 2001 International Data Corporation (IDC) Web-to-host report**
 - ▶ **Web-to-Host market is continuing on a significant growth path, with revenues expected to rise to \$836 million, and shipments growing from 4.5 million to 15.5 million by 2005.**
 - ▶ **Dominating the Web-to-host market, IBM led with a 47.6% share!**
- **InfoWorld selected WebSphere Host On-Demand as Top 5 Analyst Pick**
 - ▶ **Praise for simplified maintenance, distribution and upgrade capabilities**
 - ▶ **Simplified deployment**
 - ▶ **Identified as a very cost-effective solution**

The difference
is WebSphere.



e-business in the Industry...

** e-business adoption has progressed much more slowly and with lower penetration*

Why?

- **Cost**
 - ▶ Companies are reducing IT spending based on the state of the economy
- **Business Value**
 - ▶ Many companies have determined their applications work fine without being re-written
- **Lack of Skills**
 - ▶ Many enterprises do not have the Java programming skills needed to move their applications to e-business



e-business software

e-business in the Industry...

What does that mean for you?

- **Target the "early adopters" of technology as well as those who require more basic e-business technology with WebSphere Host Integration products**
- **WebSphere Host Integration is easy to buy, easy to deploy, and is a cost-effective way to move to e-business**
 - ▶ low cost per user
 - ▶ Wizards to help administrators develop and deploy applications
 - ▶ Increased ROI for the customer
- **WebSphere Host Integration is the largest near term revenue opportunity for you**
- **As the market moves beyond transactions, there is significant opportunity to sell other WebSphere integration and infrastructure solutions, and this is a key IBM differentiator from our competitors!**

The difference
is WebSphere.

The IBM logo, consisting of the letters 'IBM' in a bold, sans-serif font, enclosed in a black rectangular box.



e-business software

Why These Host Integration Announcements are Significant

- WebSphere Host Integration products continue to support and integration simplify transformation to e-business, while positioning customers for the future
- Comprehensive solution offerings complemented with rich set of tools enable customers to easily tailor Web-to-host solutions for different user groups.
- Product enhancements offer enterprises the ability to reach new users, while enabling greater flexibility and productivity.

The difference
is WebSphere.

The IBM logo, consisting of the letters 'IBM' in a bold, sans-serif font, enclosed in a black rectangular box.

IBM Confidential



e-business software

The difference
is WebSphere.



Resources for Host Integration

[IBM WebSphere Host Integration Solution Web Site](http://ibm.com/software/webservers/hostintegration)

- ▶ <http://ibm.com/software/webservers/hostintegration>

[IBM WebSphere Host Integration - Customer Comments](http://ibm.com/software/webservers/hi_customers)

- ▶ http://ibm.com/software/webservers/hi_customers

[IBM WebSphere Host Integration - Business Partners](http://ibm.com/software/webservers/hi_partners)

- ▶ http://ibm.com/software/webservers/hi_partners

[IBM WebSphere Host Integration - Case Studies](http://ibm.com/software/webservers/hi_casestudies)

- ▶ http://ibm.com/software/webservers/hi_casestudies

[IBM WebSphere Host Integration - Library \(brochures, redbooks, white papers, presentations\)](http://www.ibm.com/software/webservers/hostintegration/library.html)

- ▶ <http://www.ibm.com/software/webservers/hostintegration/library.html>