

IBM Lotus Sametime 3

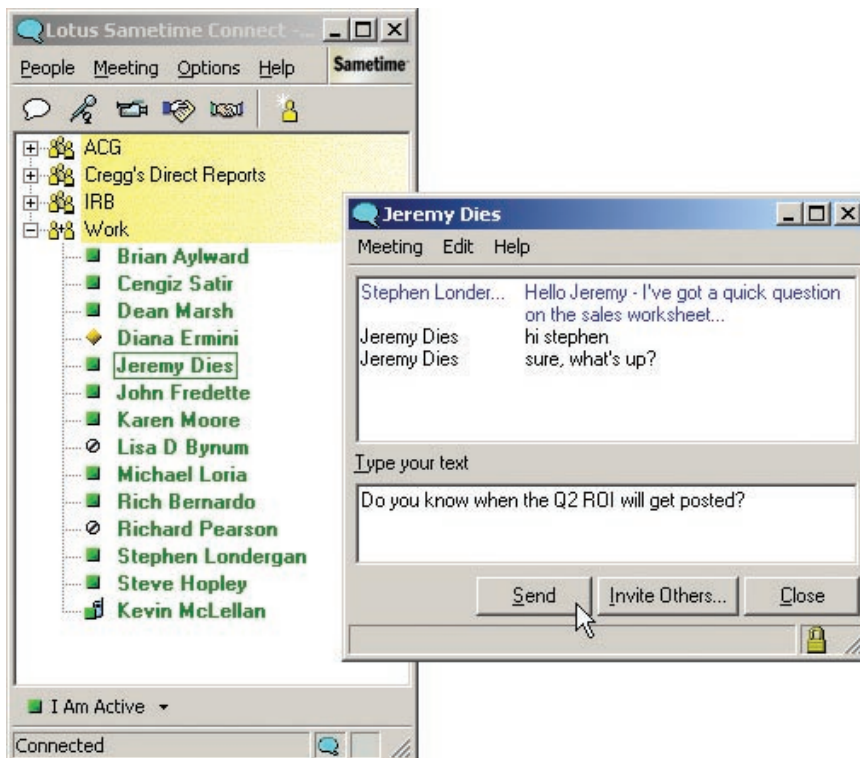
Highlights

- **Reduces costs, travel budgets and workloads by streamlining communications**
- **Extends secure, reliable realtime communications to customers and business partners**
- **Helps people get answers, find experts, work together and make decisions faster and more effectively**
- **Enables your company to be more responsive to everyone along your value chain**
- **Works with your existing infrastructure—even if you don't use Lotus Notes**

Realtime collaboration that's fit for business

In today's marketplace, your enterprise is under more pressure than ever. To reduce costs and optimize processes, while continuing to produce results. To react faster. To do more with less. And more than ever before, your entire organization must be more responsive and accountable to everyone along your value chain.

Whether they're working with people across the hall or around the world, users can communicate more effectively with IBM Lotus® Sametime™ collaboration software. Sales reps with instant, immediate access to information and people back at the office can close more sales—faster. A place to share documents—in realtime—with colleagues around the globe helps your business to reduce travel expenses and users to make decisions faster. And communicating directly and securely with customers can give your enterprise a competitive advantage.



IBM Lotus Sametime allows users to see who is online and to collaborate with them instantly.

The Lotus Sametime product family includes Lotus Sametime server, IBM Lotus Sametime Connect client, IBM Lotus Sametime Everyplace™, Sametime IM Gateway and Enterprise Meeting Server (EMS). It also includes a range of application development tools that make it possible for you to easily customize Lotus Sametime software to make any application come alive. Lotus Sametime is designed to work smoothly with IBM Lotus Notes® or virtually any Web browser. You can add realtime collaboration to e-mail, discussion databases, document libraries and Microsoft® Windows® applications.

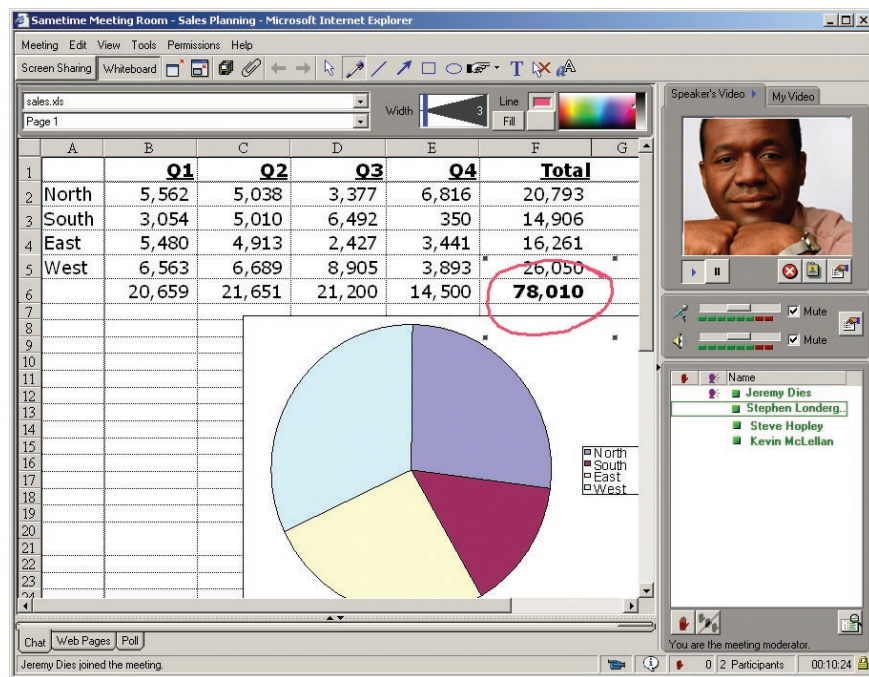
Faster, more efficient communication to meet your business needs

To build a solid, realtime collaboration strategy, you must start with a foundation based on awareness, conversation and shared objects. With Lotus Sametime, you get an easy-to-use tool that allows users to see who is online and to collaborate with them instantly. They can easily find who may be working on the same projects. Create personalized lists of team members and colleagues. And control their online availability through robust user privacy features. Then, using instant

messages, users can start a conversation with one person or a chat session involving several people. Or launch an instant, online meeting to share what they see on their computer screens, right from their desktops.

For more robust collaboration, users can take advantage of Lotus Sametime Web-conferencing functionality by quickly moving to an application-sharing or whiteboard session. Users can share a screen frame, their desktops or applications with others, or show presentations and drawings on the whiteboard. Any application—word processing, spreadsheets,

project management software—can be shared with anyone in your community, instantly and securely. A user can give someone access to his or her computer to help solve a problem more quickly and efficiently. Or use the Lotus Sametime drive feature to pass control of the application to others and retrieve it as the need arises. Lotus Sametime software can also automatically convert popular file types into whiteboard pages that can be preloaded for a meeting. Whatever your organization’s communication needs are, Lotus Sametime has the tools you need to help users make their points memorably.



Share word-processing documents, spreadsheets or project management applications with anyone in your community—instantly and securely.

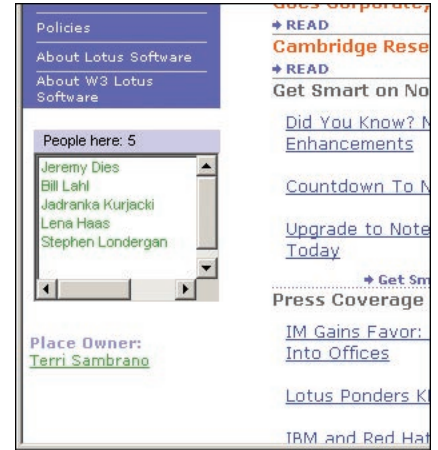
When people are in the same office, collaboration can be spontaneous or scheduled. Lotus Sametime collaboration gives them this same flexibility online. Launch meetings on the fly or schedule an event in the meeting center. Schedule meetings to let users plan project updates, seminars or other activities. They can store agenda or preparation materials on the Lotus Sametime server. And meeting invitees can access materials, anytime—whether it's before, during or after a scheduled meeting. Users can even schedule Sametime meetings from Notes® and Microsoft Outlook®.

Build a complete collaborative environment

If you're a Lotus Notes, IBM Lotus QuickPlace™ or IBM Lotus Domino™ user, Lotus Sametime software provides outstanding opportunities to blend realtime collaboration with these applications to create a complete collaborative environment. Because Lotus Sametime integrates with Lotus Notes 6, you can enable users to create, modify and attend Lotus Sametime meetings through the Lotus

Notes client. When users schedule Sametime meetings through Notes, Notes will automatically send e-mail invitations to all meeting participants. Participants attend Sametime meetings by clicking the meeting URL provided in the invitation.

Developers familiar with common development environments can easily embed Lotus Sametime functionality into their applications. Sametime toolkits are designed to easily add awareness to applications—with as little as a few lines of code. The ability to add awareness and instant messaging to Microsoft Office, Windows or Web applications makes Sametime even more useful and valuable than ever before. You can also add Lotus Sametime capabilities to Lotus Domino applications. A *who's online* button embedded in your e-mail message can create a list of authors and recipients who are online, allowing you to send instant messages to them. Integrated calendaring and scheduling options let you plan online meetings and invite others to meetings directly from Lotus Notes. Lotus Sametime collaboration software ships with sample applications to get you up and running quickly.



With Sametime, you can embed presence awareness into any application.

Deliver applications in realtime

Lotus Sametime delivers realtime applications with an infrastructure that offers you the enterprisewide security, scalability and management you expect:

Ubiquity

With either a Notes client or a browser, you can now see who else is working in a team space and exchange instant messages with them. Examples include Microsoft Office, QuickPlace or any Web-based application, such as a portal.

Authentication and access control

Users are authenticated when they access Sametime. And online meetings can be password-protected and have a restricted invitee list.

Security and privacy

Data is encrypted to protect meeting content from unauthorized viewing. The transmission of chat data is also encrypted to offer greater protection and privacy. Chats can be saved in a text file by the end user to review at a later time, or logged at the server for regulatory reasons. Privacy-management features allow users to specify their visibility to others in awareness mode to minimize interruptions.

Sametime IM Gateway

The Lotus Sametime server supports the Session Initiation Protocol (SIP) for instant messaging and presence-leveraging extensions (SIMPLE) for the IM Gateway. This permits secure interchange of realtime information between other collaborative communities that support this standard. Once your system administrator sets up the Sametime IM Gateway, users can add people from other communities, based on their e-mail addresses, increasing reach to your value chain.

Scalability

Application-sharing sessions allow hundreds of people to view the same application or presentation whiteboard. Multiple Lotus Sametime servers can be linked together to increase scalability and reduce traffic across wide area networks (WANs). An optional component is EMS, designed to optimize the load balancing and failover of your organization's Web-conferencing infrastructure.

Proxy support and firewalls

Putting Lotus Sametime in your network's demilitarized zone (DMZ) lets external users access the server without compromising network security. Client-side support for proxies includes HTTP, HTTPS, SOCKS4 and SOCKS5. And HTTP tunneling on port 80 enables Lotus Sametime clients that have restrictive firewalls and operate in corporate networks to connect to a Sametime server on the Internet.

Directory support

Use existing directories (Domino or any lightweight direct access protocol [LDAP] directory) to control exactly who can and cannot access your environment. Or create and manage a directory on the fly.

Server management

By using the Lotus Sametime server's browser-based interfaces, you can set up new users, monitor activity levels, manage all security and access privileges, and analyze usage trends. Robust functionality, including server-logging, realtime monitoring of server usage and broadcast messages from the server make it easy to manage Lotus Sametime in or across your network.

Efficient, flexible, instant communication

IBM Lotus Sametime provides the instant-messaging, Web-conferencing and application-sharing platform you need to grow your business. And Sametime fulfills the stringent security and availability requirements you expect from your mission-critical applications. With the right realtime collaboration technology, your teams can work more efficiently — while your organization significantly reduces travel and telecommunications expenses.

For more information

To learn more about how IBM Lotus Sametime can help your business, visit:

www.lotus.com/sametime

IBM Lotus Sametime 3 at a glance

Supported server operating systems

- Microsoft Windows NT®, Version 4.0
- Microsoft Windows 2000 (Server and Advanced Server editions)
- IBM AIX®, Version 4.3.3
- IBM @server iSeries™ model or IBM OS/400®, Version 5 Release 1 and Version 5 Release 2
- Sun Solaris operating environment, Version 8

Supported Web servers

- For Windows: Lotus Domino 5.0.10
- For iSeries: Lotus Domino 5.0.10 or 5.0.11
- For AIX and Sun Solaris operating environment: Lotus Domino 5.0.11

Supported client operating systems

- Windows NT
- Windows 98 and Windows 95
- Windows 2000
- Windows XP Professional Edition

Supported Web browsers

- Microsoft Internet Explorer, Version 5 and Version 6 for Windows
 - Netscape Communicator, Version 4.79 for Windows
-



© Copyright IBM Corporation 2002

Lotus Software
IBM Software Group
One Rogers Street
Cambridge, MA 02142
U.S.A.

Printed in the United States of America
09-02
All Rights Reserved

AIX, the e-business logo, IBM, the IBM logo, iSeries and OS/400 are trademarks or registered trademarks of International Business Machines Corporation in the United States, other countries or both.

Domino, Everyplace, Lotus Notes, Notes, QuickPlace and Sametime are trademarks or registered trademarks of Lotus Development Corporation and/or IBM Corporation in the United States, other countries or both.

Microsoft, Outlook, Windows and Windows NT are trademarks of Microsoft Corporation in the United States, other countries or both.

Other company, product and service names may be trademarks or service marks of others.

Printed in the United States on recycled paper containing 10% recovered post-consumer fiber.

