

Adds the look and feel of the Web to your host applications



# IBM Screen Customizer

## Highlights

**Instantly transforms IBM S/390® and IBM AS/400 host screens into graphical user interfaces**

**Allows drag-and-drop customization of user-selected host screens**

**Supports multiple customizations of the same screen**

**Allows you to apply custom templates to all screens, customized or not**

**Allows you to hide navigational screens for a more targeted workflow**

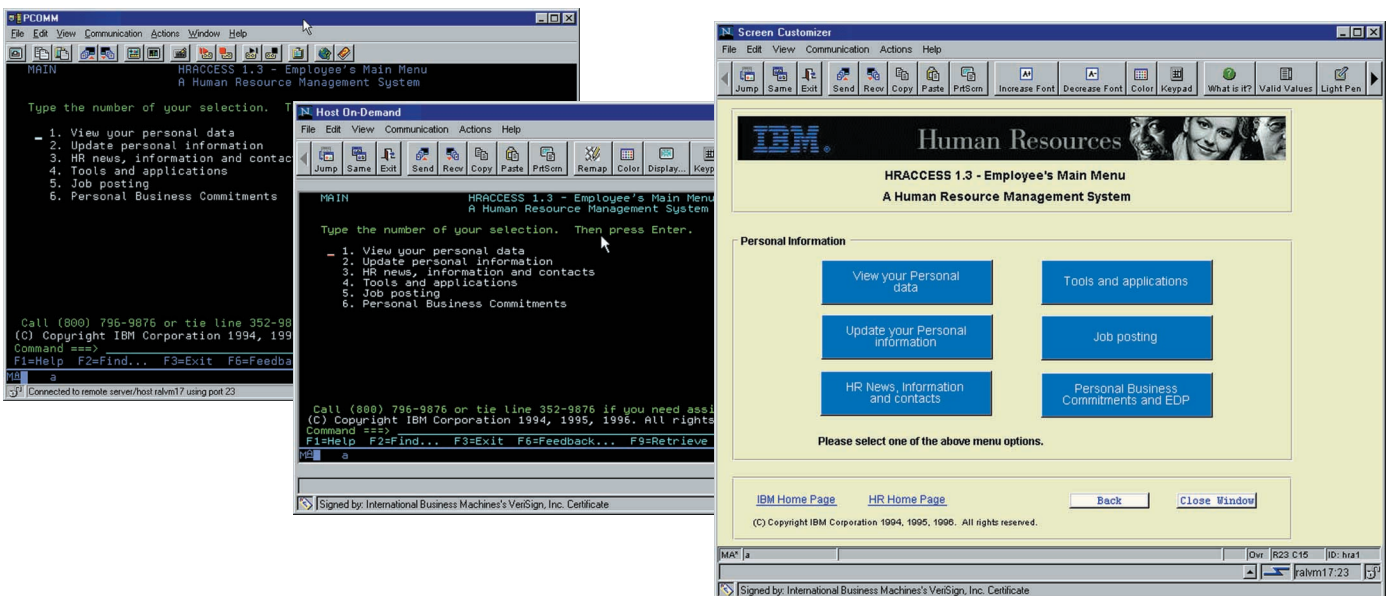
**Requires no programming for basic customization**

**Lets you add new business logic with user-defined applets, global variables, a new IBM Screen Customizer Bean and a new API**

**Works with IBM WebSphere Host On-Demand and IBM Personal Communications**

IBM Screen Customizer consists of three components:

- *Administrator*  
Captures host screens from an active host session and saves them as maps
- *Customization Studio*  
Customizes host screens that were captured in the Administrator
- *Client RunTime*  
Allows end users to view screens customized in the Customization Studio



With IBM Screen Customizer, you can easily customize 3270 and 5250 applications for a user-friendly graphical interface.

## *Customize your screens automatically— without programming*

IBM Screen Customizer automatically converts 3270 and 5250 host screens into graphical presentations, which are easy to customize—without programming. Available for both IBM WebSphere® Host On-Demand and IBM Personal Communications, IBM Screen Customizer is based on innovative screen recognition technology, requiring no access to source code. Users can simultaneously access multiple hosts with multiple sessions, without causing degradation in host response time. After installing IBM Screen Customizer, users never have to see a *green screen* again.

### **Easy-to-customize GUI screens without programming**

IBM Screen Customizer default graphical user interface (GUI) automatically presents each host screen at the client, featuring menu buttons, defined input fields and hot spots. With IBM Screen Customizer Customization Studio, you can create customized versions of host screens captured within the Administrator.

You can improve screens by adding new objects, changing fonts and colors, applying templates, hiding host fields, reordering workflow, combining data or automatically navigating the user through screens.

The drag-and-drop technology of IBM Screen Customizer Customization Studio eliminates the need for programming, making it a cost-effective, quick solution that allows you to leverage investments in legacy applications. Customization Studio runs on a Microsoft® Windows® 95, Windows 98, Windows NT® or Windows 2000 workstation. Customization Studio does not require a host connection.

### **Smooth integration with connectivity software**

IBM Screen Customizer Client RunTime component was developed to integrate smoothly with IBM WebSphere Host On-Demand and IBM Personal Communications (SNA and TCP/IP) connectivity software to form a complete host integration solution. IBM WebSphere

Host On-Demand (Java™ emulator) and IBM Personal Communications (standard terminal emulator) manage 3270 and 5250 connectivity, while IBM Screen Customizer Client RunTime delivers a graphical presentation of host application screens. The same customized screens can be used by both IBM Personal Communications clients and IBM WebSphere Host On-Demand clients.

IBM Screen Customizer is for those who have invested in legacy applications and want to graphically enable them for e-business, without rewriting business logic. IBM Screen Customizer is a Java technology-based solution that runs locally on the client machine and is particularly well suited for both intranet and extranet environments. It excels in solutions where users have sustained connections and ongoing interaction with the host application.

### **For more information**

To learn more about IBM Screen Customizer, visit:

**ibm.com/software/network/  
screencustomizer**

---

## **IBM Screen Customizer at a glance**

---

### **Hardware requirements**

- APC or workstation computer with sufficient processor speed, memory and disk to run a complex browser or Java environment
- 

### **Software requirements**

To install IBM Screen Customizer, Version 2.0, you must have already installed either IBM WebSphere Host On-Demand, Version 5.0 or IBM Personal Communications, Version 5.0.

IBM Screen Customizer, Version 2.0 can be installed in the following situations.

*Supported operating systems to install IBM Screen Customizer Client RunTime on an IBM WebSphere Host On-Demand, Version 5.0 server include:*

- Windows NT, Version 4.0 with SP5<sup>®</sup> and Windows 2000
- IBM AIX<sup>®</sup>, Version 4.2.x, Version 4.3.3 and Version 4.3.4
- IBM OS/2 WARP<sup>®</sup> Server, Version 4 and OS/2 WARP Server for e-business, Version 4.5
- Novell NetWare, Version 4 and Novell NetWare, Version 5
- Sun Solaris<sup>™</sup>, Version 2.6 and Sun Solaris, Version 2.7
- IBM OS/400<sup>®</sup>, Version 4 Release 3, Version 4 Release 4 and Version 4 Release 5
- HP-UX 10.20
- Red Hat Linux<sup>®</sup>, Version 6.2
- SUSE Linux, Version 6.4
- IBM OS/390<sup>®</sup>, Version 2 Release 5, Version 2 Release 6, Version 2 Release 7, Version 2 Release 8, Version 2 Release 9 and Version 2 Release 10
- Caldera OpenLinux, Version 2.3
- TurboLinux, Version 6.0
- SCO Unixware, Version 7

*Supported operating systems for IBM Screen Customizer Client RunTime for IBM WebSphere Host On-Demand client include:*

- Windows 95 and Windows 98
- Windows NT, Version 4.0 with SP5 and Windows 2000
- IBM AIX, Version 4.2.x, Version 4.3.3 and Version 4.3.4
- IBM OS/2 WARP, Version 4
- Sun Solaris, Version 2.6 Release 7
- HP-UX 10.20
- Red Hat Linux, Version 6.2
- SUSE Linux, Version 6.4
- Caldera OpenLinux, Version 2.3
- TurboLinux, Version 6.0
- IBM Netstation, Version 2 Release 1 Modification 0

*Supported operating systems to install IBM Screen Customizer Client RunTime component on an IBM Personal Communications workstation:*

- Windows 95
  - Windows 98 and Windows 98SE
  - Windows NT, Version 4.0 and Windows 2000 (Professional, Server and Advanced Server)
- 

### **Administrator and Customization Studio**

Supported operating systems to install Administrator and Customization Studio on an IBM WebSphere Host On-Demand server, IBM WebSphere Host On-Demand client or IBM Personal Communications workstation include:

- Windows 95
  - Windows 98 and Windows 98SE
  - Windows NT, Version 4.0 and Windows 2000 (Professional, Server, and Advanced Server)
- 

### **Supported browsers**

The following browsers can be used to run the IBM Screen Customizer Client RunTime with IBM WebSphere Host On-Demand:

- Netscape Navigator, Version 4.6 and Version 4.7
- Netscape Navigator, Version 4.61 (OS/2<sup>®</sup>)
- Microsoft Internet Explorer, Version 4.01 with IBM SP1<sup>®</sup>, Internet Explorer Version 5.0 or Version 5.1

(A browser is not required for IBM Screen Customizer Client RunTime for IBM Personal Communications.)

---

### **Additional information**

- IBM Screen Customizer Client RunTime for IBM Personal Communications supports up to 4 sessions at a time.
  - IBM WebSphere Host On-Demand keyboard remap is not supported while running Customization Studio. It is supported while using both Administrator and Client RunTime.
  - IBM Client Access Express, Version 4.0 does not support IBM Screen Customizer, Version 2.0.
  - IBM Client Access Express, Version 4.0 with service pack SF59557, or higher works with IBM Screen Customizer, Version 1.0 (CSD2 or higher CSD level).
-

---

## IBM Screen Customizer features at a glance

---

<b>Feature</b>	<b>Function</b>
<b>GUI for 3270 and 5250 Host Applications</b>	<ul style="list-style-type: none"><li>• Supports both IBM WebSphere Host On-Demand and IBM Personal Communications</li><li>• Host screens are automatically converted to a GUI which can include:<ul style="list-style-type: none"><li>– Defined input fields</li><li>– Clickable menu buttons</li><li>– Clickable hot spots</li><li>– AS/400® subfile display</li></ul></li><li>• Selected screens can be quickly customized with additional capabilities including:<ul style="list-style-type: none"><li>– Hiding unnecessary information or entire screens</li><li>– Moving fields to reorder the host workflow</li><li>– Adding Web links, radio buttons, check lists and more</li><li>– Light pen support</li></ul></li><li>• Custom templates can be applied to all screens, customized or not.</li></ul>
<b>Ease of use</b>	<ul style="list-style-type: none"><li>• Cut, copy and paste from the menu bar</li><li>• Show and hide the status bar and keypad</li><li>• Create context sensitive help for host screens</li><li>• Install as native OS/400, OS/390 and AIX</li></ul>
<b>File transfer</b>	<ul style="list-style-type: none"><li>• Is available for both 3270 and 5250 sessions with IBM WebSphere Host On-Demand and IBM Personal Communications</li><li>• Provides menu options and toolbar buttons</li><li>• Offers macro buttons that can be launched from a customized screen</li></ul>
<b>Application development</b>	<p>New business logic can be added through:</p> <ul style="list-style-type: none"><li>• User-defined applets at startup or from a button.</li><li>• Global variables that allow data to be transferred between different applications and sessions.</li><li>• An API that allows graphical components and data to be modified at runtime.</li><li>• A Screen Customizer Bean that allows IBM Screen Customizer to be embedded directly into a Web page. The bean allows rapid application development with full capabilities to display customized screens.</li></ul>



© Copyright IBM Corporation 2000

IBM Corporation  
3039 Cornwallis Road  
Research Triangle Park, NC 27709

Printed in the United States of America  
08-00  
All Rights Reserved

AIX, AS/400, the e-business logo, IBM, OS/2, OS/2 WARP, OS/390, OS/400, S/390, SP1, SP5 and WebSphere are trademarks of International Business Machines Corporation in the United States, other countries or both.

Microsoft, Windows and Windows NT are trademarks of Microsoft Corporation in the United States, other countries or both.

Java, all Java-based trademarks and logos and Solaris are trademarks of Sun Microsystems, Inc. in the United States, other countries or both.

UNIX is a registered trademark of The Open Group in the United States and other countries.

Linux is a registered trademark of Linus Torvalds.

Other company, product and service names may be trademarks or service marks of others.



Printed in the United States on recycled paper containing 10% recovered post-consumer fiber.



G325-3917-01