

Help enable secure access to your mission-critical business systems



IBM Personal Communications

Highlights

Provides market-leading host connectivity and emulation

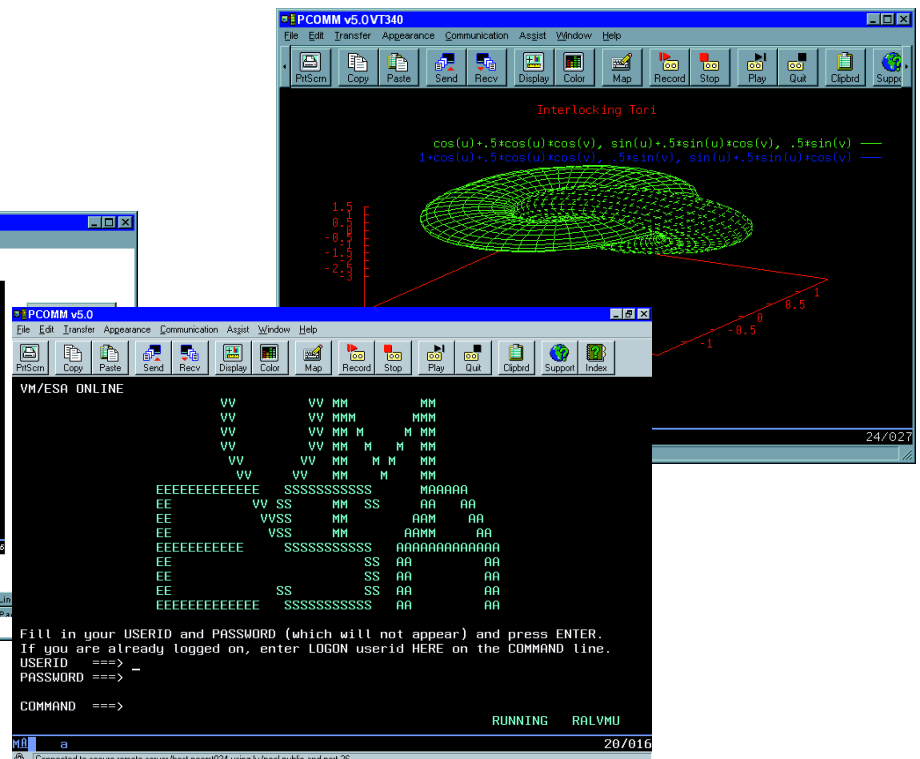
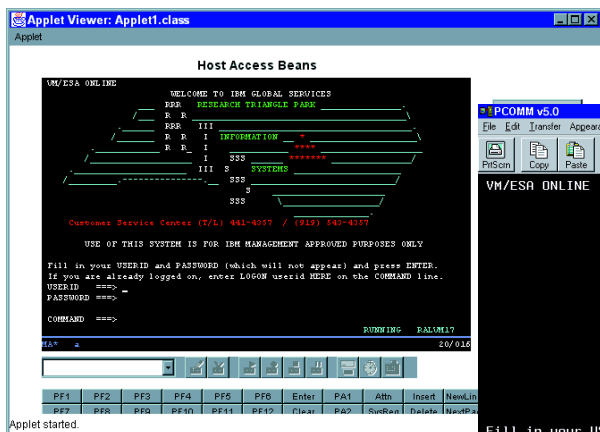
Includes tools to easily combine host and desktop applications

Helps you to capitalize on existing investments, and extends applications to Web-based technologies

Enables users to have access to mission-critical business systems regardless of platform or networking environment

IBM Personal Communications, available on Microsoft® Windows® 95, Windows 98, Windows NT®, Windows 2000 and IBM OS/2®, is a host communication and terminal emulation package that features 3270, 5250 and VT emulation; SNA application support; integration; and SNA and TCP/IP connectivity. IBM Personal Communications is a key component of the IBM WebSphere Host Integration Solution that provides everything you need to help enable secure access to your mission-critical business systems for virtually every user.

IBM Personal Communications brings the power of personal networking to your workstation and exploits existing networking capabilities. This includes SNA applications and technologies, such as advanced program-to-program communication (APPC) and High-Performance Routing (HPR). It also provides TCP/IP support and an extensive API set, offering Host Access Class Library (HACL) and Emulator High-Level Language Applications Programming Interface (EHLLAPI) through programming languages, such as C++, VBScript and Java™.



Multiple Personal Communications sessions illustrating SSL support, VT340 graphics and a custom application using Host Access Beans for Java

Easily access host applications

Key enhancements for IBM Personal Communications

The key enhancements for IBM Personal Communications are:

- System policy support
- Client certificate authentication
- Zero administration windows (ZAW) initiatives
- Tivoli Ready™ certification
- Multilanguage support (MLS)
- Usability enhancements
- Session start options
- Remote emulation session control
- Default printer recognition
- Hot-standby and load balancing support
- Windows 2000 plug-and-play adapter support

Industry-leading emulation

IBM Personal Communications continues to set the standard for terminal access to business-critical applications and data on different host systems, taking advantage of 3270, 5250, TN3270E, TN5250, VT52, VT100, VT220 and VT340 emulation.

Improved development capabilities

IBM Personal Communications supports Host Access Beans for Java™ (based on the JavaBeans™ specification), ActiveX controls, VB automation objects and VBScript. Building on Personal Communications leadership in object-oriented programming, the HACL API provides a Java programming interface.

With a Java interface for HACL and Host Access Beans for Java, you have the ability to create applications for both Personal Communications and IBM WebSphere Host On-Demand, allowing great flexibility while preserving your investments for the future. And Personal Communications has a set of ActiveX controls, delivering many of the features of Host Access Beans for Java.

Industry-standard APIs

IBM Personal Communications extensive API set has been further enhanced by improving EHLLAPI application performance and by the inclusion of industry-standard 32-bit EHLLAPI APIs, as well as Windows HLLAPI (WinHLLAPI) APIs.

Security when you need it most

IBM Personal Communications supports Secure Sockets Layer (SSL), Version 3.0. When combined with the support for the load balancing Service Location Protocol (SLP)—found in products, such as IBM Communications Server for Windows NT and NetWare for SAA®—IBM Personal Communications can be configured to connect to only SSL-enabled servers, helping to ensure more network security.

Benefits

IBM Personal Communications helps to ensure that you are ready to make the transition to e-business with tools that you can use today and through new technologies that provide:

- *Network integration*
Personal Communications can handle nearly any protocol, including ISDN, HPR, SNA and IP—to help you connect a user to any data, anywhere.
- *Connectivity*
Personal Communications enables your company to connect to your employees, customers, suppliers and trading partners.
- *e-business tools*
The Personal Communications Java Interface for HACL helps to make your move to a Web-to-host environment easier and more efficient. Using this tool will allow you to preserve your application development investment as you move to other Host Integration products. ActiveX Controls and VBScript capabilities allow you to capitalize on existing investments in the Visual Basic environment and extend applications to Web-based technologies.

- *Platform independence*
Personal Communications provides the same look and feel whether it is running on a Windows 32-bit operating system or OS/2. It supports enterprise server and mid-range host connectivity and enables you to easily access host applications with new Web-to-host technologies.
- *Open system architecture*
From EHLLAPI to TCP/IP to SNA, Personal Communications provides industry-standard solutions to help preserve your investments into the future.
- *Extensive language support*
IBM Personal Communications is multilingual. Available in 22 languages, it includes double-byte character set (DBCS) languages. It supports the euro sign, and includes extensive keyboard and code-page support.
- *A single IBM WebSphere Host Integration Solution*
Team IBM Personal Communications with other products in IBM WebSphere® Host Integration Solution, including IBM WebSphere Host On-Demand, IBM Screen Customizer, IBM WebSphere Host Publisher and IBM Communications Server for a complete answer to Web-to-host access in the industry.

Easy ordering—CD-ROM package options

To simplify ordering and installation, IBM Personal Communications is packaged on a single CD-ROM for the 3270, 5250 and VT environments. A separate CD-ROM, IBM Personal Communications for IBM AS/400®, is available for users who need only 5250 and VT support.

For more information

To learn more about IBM Personal Communications, visit:

ibm.com/software/network/pcomm

IBM Personal Communications features and functions

	Windows 95, Windows 98, Windows NT and Windows 2000, Version 5.0			OS/2, Version 4.3	
	3270	5250	VT	3270	5250
Attachments					
• IEEE 802.2	x	x		x	x
• 3174 Peer Communication (LAN over coaxial)	x	x	x	x	x
• IPX/SPX	x			x	
• NWSAA Client and Communications Server for Windows NT Client					
APPC	x	x			
LUA	x				
• TCP/IP	x	x	x	x	x
• SNA Distributed Function Terminal (DFT)	x			x	
• Non-SNA DFT	x			x	
• Control Unit Terminal (CUT)				x	
• Twinaxial		x			x
• AS/400 and S/3x Console (asynchronous and twinaxial)		x			x
• SDLC (including auto-dial capability)	x	x		x	x
• Wide Area Connector (WAC)	x	x		x	x
• SNA over asynchronous	x	x		x	x
• Asynchronous	x			x	
• Asynchronous for IBM Global Network® (IGN)	x			x	
• Home3270	x			x	
• Hayes Autosync	x	x		x	x
• Hayes Autosync II (Windows 95 and Windows 98 only)	x	x			
• Microsoft SNA Server					
FMI	x				
Windows APPC	x	x			
Windows LUA	x				
• APPC3270 (LU2 over APPC)	x			x	
• IBM AnyNet® (SNA over TCP/IP)	x	x		x	x
• 3270 pass-through by AS/400	x			x	
• ISDN, X.25	x	x		x	x
• PCI MPA	x	x		x	x
• Enterprise extender	x	x		x	x
• 3270 pass-through over twinaxial	x			x	
• OEM adapter support	x	x	x	x	x
Print support					
• Host print	x	x	x	x	x
3812 printer emulation		x			x
Host print transform		x			x
ASCII transparent	x	x	x	x	x
Printer definition table (PDT)	x	x		x	x
• Screen Print	x	x	x	x	x
• Virtual Print					
• ZIPPRINT	x			x	

IBM Personal Communications features and functions continued

	Windows 95, Windows 98, Windows NT and Windows 2000, Version 5.0			OS/2, Version 4.3	
	3270	5250	VT	3270	5250
Installation and customization					
• Remote unattended installation (CID)				x	x
• Silent installation	x	x	x		
• Microsoft SMS support	x	x	x		
• Installation and configuration from LAN server	x	x	x	x	x
• Automatic DFT connection	x			x	
• Simultaneous sessions with different code pages and keyboard languages	x	x	x	x	x
• Automatic logon		x			x
• 26 display and printer emulation sessions	x	x	x	x	x
• Selectable display sizes	x	x	x	x	x
• VT52/100/220/340 emulation			x		
• Toolbar customization	x	x	x	x	x
• Text configuration files	x	x	x	x	x
• Configuration update files	x	x			
• Initial configuration definitions	x	x			
• CM/2 migration	x	x		x	x
• Tivoli® software support	x	x			
• System policy	x	x	x		
Networking function					
• SNA data compression (emulator sessions)	x			x	
• SNA data compression (LU 6.2 sessions)	x	x			
• AnyNet Sockets over SNA (not available in Windows 2000)	x	x		x	x
• Session-level encryption				x	
• VPD/EVPD, Alert	x			x	
• Response time monitor (RTM)	x			x	
• Command start/stop/query SNA node	x	x		x	x
• Load balancing, hot standby, SLP for IPX	x	x			
• SSL, Version 3.0	x	x	x	x	x
• Client certification authentication for SSL	x	x	x	x	x
• HPR routing over IP for nondisruptive backup	x	x			
• Automatic link reactivation	x	x			
• IBM APPN® end node	x	x		x	x
• APPN LEN node					
• HPR	x	x		x	x
• Dependent LU requester (DLUR)	x	x		x	x
Utilities					
• 3174 port 0 utility				x	
• Administration tools	x	x	x	x	x
• Information bundler for problem determination	x	x	x	x	x
• Internet service	x	x	x		
• Enhanced log/trace viewer	x	x	x		
• Microsoft BackOffice® certified	x	x	x		

IBM Personal Communications features and functions continued

	Windows 95, Windows 98, Windows NT and Windows 2000, Version 5.0			OS/2, Version 4.3	
	3270	5250	VT	3270	5250
User interface					
• Graphical, customizable toolbar feature	x	x	x	x	x
• Rule line	x	x	x	x	x
• Menu bar customization	x	x	x	x	x
• Pop-up keypad and hot keys	x	x	x	x	x
• 3-D hot spots	x	x	x	x	x
• Macro record and play	x	x	x	x	x
• Graphical keyboard remapping	x	x	x	x	x
NLS key-caps support	x	x	x	x	x
122-key keyboard support				x	x
DBCS unique keyboard support	x	x			
• Customizable mouse	x	x	x	x	x
• Drag-and-drop color remapping	x	x	x	x	x
• Crisp fonts, automatic sizing, fixed font size	x	x	x	x	x
• Display setup, view setup, window setup	x	x	x	x	x
• Internet hot spots	x	x	x	x	x
• OLE/ActiveX objects	x	x	x		
• APL support	x			x	
• Automation and scripting utility (CMMOUSE)	x	x	x	x	x
• Accessibility for handicapped users	x	x	x	x	x
• Status bar	x	x	x		
• Euro sign	x	x		x	x
• Intelligent spreadsheet support	x	x	x	x	x
• Blink attribute support	x	x	x		
• VT history	x	x	x		
• Multilanguage support	x	x	x		
IBM AS/400 application support					
• PC C organizer and text assist		x			x
• Enhanced nonprogrammable terminal user interface (ENPTUI)		x			x
• AS/400 network drives (shared folders)		x			x
Programming interfaces					
• DOS EHLLAPI	x	x	x	x	x
• EHLLAPI, DDE, PCSAPI, CPI-C, APPC	x	x	x	x	x
• REXX EHLLAPI support	x	x	x	x	x
• EasyREXX for HLLAPI				x	x
• Visual Basic scripting	x	x	x		
• SRPI	x			x	
• REXX PSCAPI support	x	x	x	x	x
• Host Access Class Library (HACL)	x	x	x	x	x
• TCP62	x	x		x	x
• Request Unit Interface (RUI)	x			x	
• Session Level Interface (SLI)	x			x	
• WinHLLAPI support	x	x	x		
• 32-bit HLLAPI	x	x	x		
• Convert macro to VBScript	x	x	x		
• Host Access Beans for Java	x	x	x	x	x
• ActiveX controls	x	x	x		
• ODBC 3.0 for SNA	x	x			

IBM Personal Communications features and functions continued

	Windows 95, Windows 98, Windows NT and Windows 2000, Version 5.0			OS/2, Version 4.3	
	3270	5250	VT	3270	5250
File transfer					
• File transfer through emulator session	x	x	x	x	x
• Command line invocation	x	x			
• Lists	x	x	x	x	x
• Templates	x	x	x	x	x
• Import/export	x			x	
• Data transfer by SNA (SQL file transfer)		x			x
• ASCII— host file transfer					
XModem			x		
XModem1K			x		
YModem			x		
YModemG			x		
• Data transfer by IP		x			
Host graphics					
• GDDM and GOCA	x			x	x
• Programmed symbol set	x			x	x
• Vector	x			x	x
• Copy graphics images	x			x	x
• VT340 ReGIS and Sixel support			x		

IBM Personal Communications, Version 5.0 at a glance

Hardware requirements

- Minimum of 24MB of RAM recommended for Windows 95 and Windows 98, 32MB of RAM for Windows NT, 64MB of RAM for Windows 2000 Professional, and 256MB of RAM for Windows 2000 servers
- 486, or higher, system processor
- 40MB of fixed disk space minimum— additional space may be required depending on installation options

Software requirements

Supported by the following desktop platforms:

- Windows 95
- Windows 98 or Windows 98SE
- Windows NT 4.0
- Windows 2000
- OS/2 (Personal Communications, Version 4.3)

Communication with the following types of server or gateway:

- IBM Communications Server for OS/2 WARP®
 - IBM Communications Server for Windows NT and Windows 2000
 - IBM Communications Server for AIX®
 - Novell NetWare for SAA, Version 2.0, or higher
 - Microsoft SNA Server
 - Direct connection to the host
-



© Copyright IBM Corporation 2000

IBM Corporation
3039 Cornwallis Road
Research Triangle Park, NC 27709

Printed in the United States of America
08-00

All Rights Reserved

AIX, AnyNet, APPN, AS/400, the e-business logo, IBM, IBM Global Network, OS/2, OS/2 WARP, SAA and WebSphere are trademarks of International Business Machines Corporation in the United States, other countries or both.

Tivoli and Tivoli Ready are trademarks of Tivoli Systems Inc. in the United States, other countries or both.

BackOffice, Microsoft, Windows and Windows NT are trademarks of Microsoft Corporation in the United States, other countries or both.

Java and all Java-based trademarks and logos are trademarks of Sun Microsystems, Inc. in the United States, other countries or both.

Other company, product and service names may be trademarks or service marks of others.



Printed in the United States on recycled paper containing 10% recovered post-consumer fiber.



Designed for

Microsoft®
BackOffice®



G325-3475-07