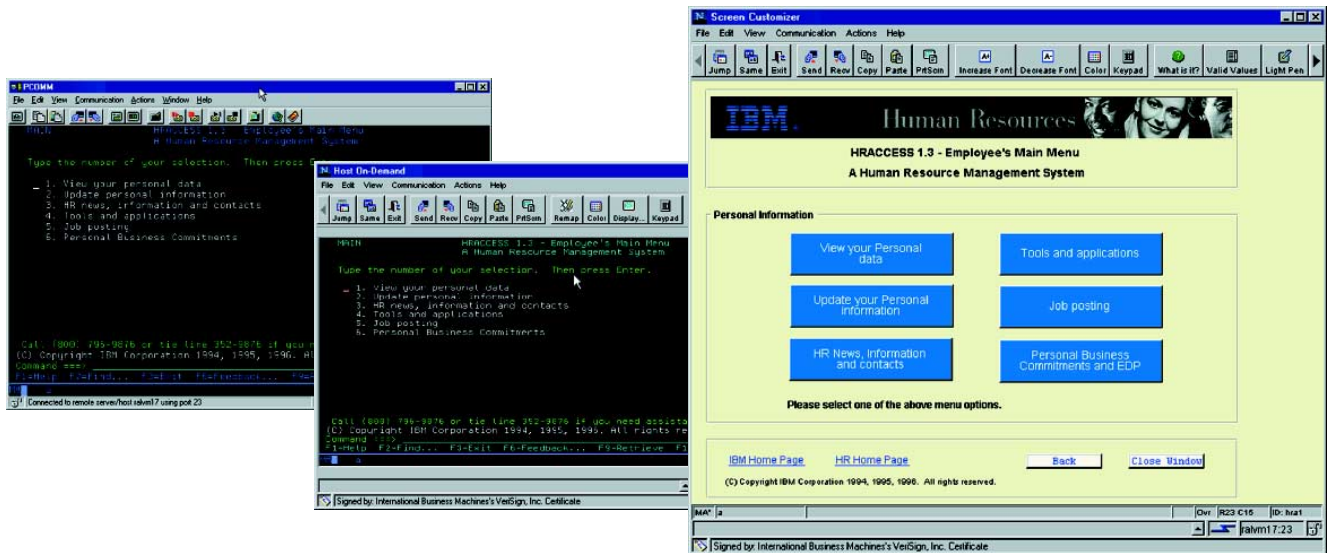


Adds the look and feel of the Web to your host applications



IBM Screen Customizer



With IBM Screen Customizer, you can easily customize 3270 and 5250 applications to display user-friendly graphical interfaces.

Highlights

- **Transforms IBM @server zSeries and IBM @server iSeries host screens into graphical user interfaces**
- **Enables drag-and-drop customization of user-selected host screens**
- **Supports multiple customizations of the same screen**
- **Requires no programming for basic customization**
- **Allows you to hide navigational screens for a more targeted workflow**
- **Lets you add business logic with user-defined applets, global variables, IBM Screen Customizer bean and API**
- **Allows you to apply custom templates to all screens**
- **Works with IBM WebSphere Host On-Demand**

IBM Screen Customizer consists of three components:

- **Administrator**
Captures host screens from an active host session and saves them as maps
- **Customization studio**
Customizes host screens that were captured in the administrator
- **Client runtime**
Allows end users to view screens customized in the customization studio



Customizes your screens automatically—without programming

Screen Customizer automatically converts 3270 and 5250 host screens into graphical presentations, which are easy to customize—without programming. Available for IBM WebSphere® Host On-Demand, Screen Customizer is based on innovative screen recognition technology, requiring no access to source code. Users can simultaneously access multiple hosts with multiple sessions, without causing degradation in host response time. After installing Screen Customizer, users may never have to see a *green screen* again.

Easy-to-customize GUI screens without programming

The Screen Customizer default graphical user interface (GUI) automatically presents each host screen at the client, featuring menu buttons, defined input fields and hot spots. With the Screen Customizer customization studio component, you can create customized versions of host screens captured within the administrator component. You can add new objects, change fonts and colors, apply templates, hide host fields, reorder workflow and combine data to improve screens. Or you can automatically navigate the user through screens.

The drag-and-drop technology of customization studio eliminates the need for programming, making it a cost-effective, quick solution that helps you leverage investments in legacy applications. Customization studio runs on a Microsoft® Windows® 95, Windows 98, Windows NT® or Windows 2000 workstation. The customization studio component does not require a host connection.

Smooth integration with connectivity software

The Screen Customizer client runtime component was developed to integrate smoothly with Host On-Demand connectivity software to form a complete Web-to-host integration solution. Host On-Demand (a browser-based emulator) manages 3270 and 5250 connectivity, while client runtime delivers a graphical presentation of host application screens.

IBM Screen Customizer is for those who have invested in legacy applications and want to graphically enable these applications for e-business, without rewriting business logic. Screen Customizer is a Java™ technology-based solution that runs locally on the client machine and is particularly well-suited for both intranet and extranet environments. It excels in solutions where users have sustained connections and ongoing interaction with the host application.

For more information

To learn more about IBM Screen Customizer, visit:

ibm.com/software/network/screencustomizer

IBM Screen Customizer, Version 2.0.60 at a glance

Hardware requirements

A PC or workstation computer with sufficient processor speed, memory and disk space to run a complex browser or Java environment

Software requirements

- Supported by the following desktop platforms:
- Windows 95
 - Windows 98 or Windows 98SE
 - Windows Millennium Edition (Windows Me)
 - Windows NT 4.0
-

To install IBM Screen Customizer, Version 2.0.60, you must have already installed IBM WebSphere Host On-Demand, Version 6.0.

- Supported operating systems to install IBM Screen Customizer client runtime on an IBM WebSphere Host On-Demand, Version 6.0 server include:
- Windows NT 4.0 or higher with Service Pack 5 (SP5) or later
 - Windows 2000 (Professional, Server and Advanced Server)
 - IBM AIX®, Version 4.3.3, Version 4.3.4 and Version 5.1
 - IBM OS/2 WARP® Server, Version 4 and IBM OS/2 Warp Server for e-business, Version 4.5
 - Novell NetWare, Version 4, Version 5 and Version 6
 - Sun Solaris™ operating environment, Release 2.6, Release 7 and Release 8
 - IBM OS/400®, Version 4 Release 4, Version 4 Release 5 and Version 5 Release 1
 - IBM OS/390®, Version 2 Release 5, Version 2 Release 6, Version 2 Release 7, Version 2 Release 8, Version 2 Release 9, Version 2 Release 10 (requires an update to JVM 1.1.8 with PTF 6)
 - IBM z/OS™, Version 1 Release 1 and Version 1 Release 2
 - HP-UX 10.20 and 11.00
 - Red Hat Linux® 6.2, 7.0 and 7.1
 - SuSE Linux 6.1, 7.0 and 7.1
 - Caldera Open Linux, Version 2.3
 - TurboLinux, Version 6.0 and Version 6.1
 - UnixWare, Version 7
 - Linux on zSeries™

- Supported operating systems for IBM Screen Customizer client runtime for IBM WebSphere Host On-Demand client include:
- Windows 95 and Windows 98 (local client option)
 - Windows NT, Version 4.0 with Service Pack 5 (SP5) and Windows 2000 (Professional) (local client option)
 - Windows Me (local client option)
 - AIX, Version 4.3.3, Version 4.3.4 and Version 5.1
 - OS/2 WARP, Version 4
 - Sun Solaris operating environment, Release 2.6, Release 7 and Release 8
 - HP-UX 10.20 and 11.00
 - Red Hat Linux, Version 6.2, Version 7.0 and Version 7.1
 - SUSE Linux, Version 6.4, Version 7.0 and Version 7.1
 - Caldera Open Linux, Version 2.3
 - TurboLinux, Version 6.0 and Version 6.1
 - Windows Terminal Server, Version 4
 - Windows 2000 Terminal Services
 - IBM Netstation, Version 2 Release 1 Modification 0
-

IBM Screen Customizer, Version 2.0.60 at a glance continued

Software requirements

Administrator and customization studio components

Supported operating systems to install administrator and customization studio on an IBM WebSphere Host On-Demand server or IBM WebSphere Host On-Demand client include:

- Windows 95
- Windows 98 and Windows 98SE
- Windows Me
- Windows NT, Version 4.0 and Windows 2000 (Professional, Server and Advanced Server)

Supported browsers

Browsers used to run the IBM Screen Customizer client runtime component with IBM WebSphere Host On-Demand include:

- Netscape Navigator, 4.6, 4.7 and 6.0 (Windows 95, Windows 98, Windows NT, UNIX®)
- Netscape Navigator, 4.6.1 (IBM OS/2®) and IBM Mozilla Web Browser for OS/2
- Microsoft Internet Explorer 4.01 with IBM Service Pack 1 (SP1), 5.0, 5.1, 5.5 and 6.0
- Other browsers that support the JRE 1.3 plug-in

Additional information

IBM WebSphere Host On-Demand keyboard remap is not supported while running customization studio. Keyboard remap is supported while using both the administrator and client runtime components.

IBM Screen Customizer, Version 2.0.60 features at a glance

Feature	Function
GUI for 3270 and 5250 host applications Support for IBM WebSphere Host On-Demand, including host screens that can automatically convert to a GUI with:	<ul style="list-style-type: none">• Defined input fields• Selectable menu buttons• Selectable hot spots• An iSeries™ subfile display
Quick customization For selected screens with additional capabilities, including:	<ul style="list-style-type: none">• Ability to hide unnecessary information or entire screens• Fields that can be moved to reorder the host workflow• Ability to add Web links, radio buttons, check lists and more• Light pen support• Custom templates that can be applied to all screens, customized or not
Ease of use Ability to show and hide the status bar and keypad; create context-sensitive help for host screens; install as native IBM OS/400, IBM OS/390 and AIX; page up and page down scrolling and right mouse-click for help	
File transfer Availability for both 3270 and 5250 sessions with IBM WebSphere Host On-Demand; provides menu options and toolbar buttons; offers macro buttons that can be launched from a customized screen	
Application development New business logic can be added through:	<ul style="list-style-type: none">• User-defined applets at startup or from a button.• Global variables that allow data to be transferred between different applications and sessions.• An API that allows graphical components and data to be modified at runtime.• A screen customizer bean that allows IBM Screen Customizer to be embedded directly into a Web page. The bean allows rapid application development with full capabilities to display customized screens.



© Copyright IBM Corporation 2001

IBM Corporation
Software Communications
Route 100
Somers, NY 10589
U.S.A.

Produced in the United States of America
08-01

All Rights Reserved

AIX the e-business logo, IBM, the IBM logo, iSeries, OS/2, OS/2 WARP, OS/390, OS/400, WebSphere and zSeries are trademarks or registered trademarks of International Business Machines Corporation in the United States, other countries or both.

Microsoft, Windows and Windows NT are trademarks of Microsoft Corporation in the United States, other countries or both.

Sun Solaris is a trademark of Sun Microsystems, Inc. in the United States, other countries or both.

UNIX is a registered trademark of The Open Group in the United States and other countries.

Linux is a registered trademark of Linus Torvalds.

Other company, product and service names may be trademarks or service marks of others.