

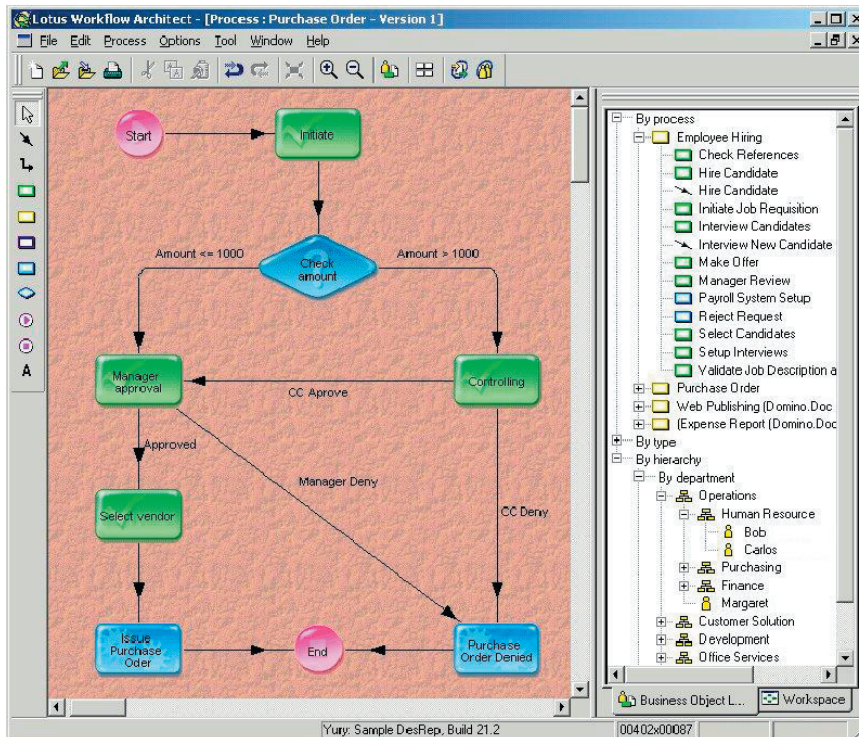
IBM Lotus Workflow 3.0.1

Highlights

- Offers improved integration with IBM WebSphere Application Server through a new Java application programming interface (API) and a new JavaScript API to help customize Web applications
- Provides instant messaging capabilities through out-of-the box integration with Lotus Sametime
- Helps improve response time and reduce operating costs
- Features customizable Web and Lotus Notes user interfaces

Automate business processes throughout the enterprise

IBM Lotus® Workflow™ offers an easy-to-use tool to design and adapt business processes and track work as it moves through your organization. In Lotus Workflow 3.0.1, enhanced capabilities help you use the Web — whether Internet, intranet or extranet — to manage business processes across your enterprise more effectively, saving you time and improving your employee's productivity.



IBM Lotus Workflow Architect presents an intuitive flowchart-style interface to help speed application development.

Lotus Workflow includes a graphical design tool, robust database technology, built-in workflow logic, directory tools and Web-enhanced API toolkits. You can complete work faster because documents can be created, modified, stored, moved and managed electronically — eliminating the paper chase that can slow critical and routine business processes.

Included workflow management tools help keep your employees productive because less time is spent tracking jobs and determining project status. You can maintain greater process control and make your business procedures more consistent and reproducible. Lotus Workflow allows you to track customer information better, offer faster response times to questions and improve customer service. And with improved collaboration and communication, your team's best practices are easy to establish, keep and share.

Lotus Workflow 3.0.1 can help you to transform costly, people-based procedures, automating some activities and standardizing others, so that people perform their work consistently and efficiently. With Lotus Workflow, you can refine and manage existing, complex business processes to improve response time and reduce operational costs. Workflow logic and application design can be maintained and modified with minimal or no programming overhead. Built-in Web browser access, and support for Java™ technology and Extensible

Markup Language (XML) make new Lotus Workflow applications immediately Web-ready.

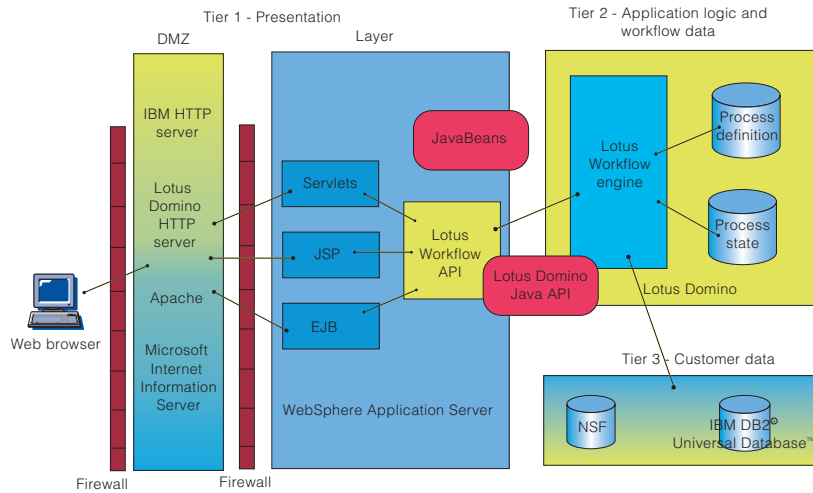
Designed to drive workflow processes

Effective workflow processes have three basic components: data, process logic and a directory of participants. Lotus Workflow includes the IBM Lotus Workflow Engine, IBM Lotus Workflow Architect and two Lotus Workflow Viewers—one Microsoft® Windows® technology-based and the other Web-based. Together, the components of Lotus Workflow help you define the process logic. Identify and manage the participants and their roles. And efficiently organize the data, objects and links—in IBM Lotus Domino™ data-

bases—that workflow applications implement to drive the process. Lotus Domino databases support granular access control to improve security and management.

Keep what you have; leverage what you know

Lotus Workflow builds on your developers' existing knowledge of IBM software products such as IBM Lotus Notes® and Lotus Domino as well as other Lotus products. Fast integration with IBM Lotus Domino.Doc®, IBM Lotus Sametime®, IBM Lotus QuickPlace™ and Notes® applications helps improve productivity and save time. Participants can see their work assignments as part of a flow diagram



The new Lotus Workflow 3.0.1 architecture integrates with IBM WebSphere® and IBM Lotus Domino environments.

using either the Windows or Web-based Lotus Workflow WebViewer. Lotus Workflow Web Viewer provides a Web interface to quickly and effortlessly check the status and context of a currently running job. Lotus Workflow fully utilizes Lotus Domino secure message routing, replication and Web browser support to help developers create workflow designs that are scalable, manageable and reusable across your whole enterprise.

Integration with Lotus Workflow Developer Toolkit allows application developers to build more robust workflow solutions and tap into other directories, including the IBM Lotus Domino Directory and Lightweight Directory Access Protocol (LDAP). Lotus Workflow and Lotus Domino.Doc are highly compatible so you can store and manage documents in Lotus Domino.Doc while using Lotus Workflow applications to rapidly deliver documents across your enterprise. Quick delivery of documents means your team can edit, review, and approve drafts, delegate and complete assigned tasks faster.

Visual tools and powerful process logic

Lotus Workflow provides an intuitive visual design environment to help managers and developers collaboratively design and review business processes. The flowchart-style visual interface—and a business object library to store workflow design elements—helps developers rapidly and cost-effectively create workflow applications.

To ease and improve workflow management, built-in process logic lets you assign, schedule, route and track each step of a job, no matter how complex. You can define business logic, specify participants and their roles and identify relevant data. Define what operations individuals or groups can perform and what data they can access. And you can also use Lotus Workflow to automatically reassign activities to a substitute participant when necessary. Using Lotus Workflow to define and automate workflow activities allows you to capture your organization's best practices and eliminate inefficient steps in business processes, improving productivity and response

time. An advanced time management function warns developers of missed deadlines and alerts managers to unclaimed activities. A parallel routing structure lets your team complete multiple tasks simultaneously.

Lotus Workflow keeps process logic separate from workflow process design so processes can be easily maintained and quickly updated or customized, with little or no programming. Lotus Workflow also separates content and process logic, so developers can easily reuse components to update existing workflow applications or create new applications. With Lotus Workflow, you can standardize workflow processes—such as document approval routes and names of authorized signers—for reuse, without rewriting or duplicating logic in new applications.

For more information

To learn more about Lotus Workflow 3.0.1 visit:

www.lotus.com/workflow

IBM Lotus Workflow 3.0.1 at a glance



Supported platforms

- IBM @server iSeries™, Version 4 Release 5
- IBM @server zSeries®
- IBM RS/6000®
- SuSE Linux® 7.0
- Red Hat Linux 6.2
- Sun Solaris 7 and Sun Solaris 8 operating environments
- Microsoft Windows NT®
- Windows 2000

System requirements

For Lotus Workflow Viewer 3.0.1 for Windows; Lotus Workflow Architect 3.0.1; and Lotus Workflow Engine 3.0.1 (client), one of the following:

- Windows 95
- Windows 98
- Windows 2000 with Lotus Domino 5.0.3 or later
- Windows NT, Version 4.0 (with Service Pack 6a) with Lotus Domino 5.0.3 or later

For Lotus Workflow WebViewer 3.0.1, one of the following:

- Windows 2000
- Windows NT
- Sun Solaris 7 operating environment
- Sun Solaris 8 operating environment
- Red Hat Linux, Version 6.2
- Red Hat Linux, Version 7.2
- IBM AIX®, Version 4.3.1
- IBM iSeries, Version 4 Release 5

Supported platforms

For Lotus Workflow Engine 3.0.1 (server), one of the following:**

- Windows NT, Version 4.0 (with Service Pack 6a) with Lotus Domino 5.0.3 or later*
- Sun Solaris 7 or Sun Solaris 8 operating environment with Lotus Domino 5.0.3 or later*
- AIX, Version 4.3.1 with Lotus Domino 5.0.3 or later (International English version only)
- Red Hat Linux, Version 6.2 with Lotus Domino 5.0.3 or later*, English version only
- Red Hat Linux, Version 7.2 with Lotus Domino 5.0.3 or later*, English version only

For iSeries, zSeries and RS/6000

- Lotus Domino 5.0.3 or later* (English and International English versions only)

For Lotus Workflow Engine 3.0.1 Application Web UI

- Lotus Domino 4.6.2 (server) or higher and a Web browser
 - Microsoft Internet Explorer, Version 5.0 or higher
 - Netscape Navigator, Version 4.7 or higher

Language support

English, German, Spanish, Danish, Portuguese-Brazilian, Swedish, Norwegian, Dutch, Finnish, French, Italian, Chinese, Japanese, Korean and Thai.

* Except Lotus Domino 5.0.6a

** For non-Windows platforms, see TechNote #188788 for the latest installation instructions.

© Copyright IBM Corporation 2002

Lotus Software
IBM Software Group
One Rogers Street
Cambridge, MA 02142
U.S.A.

Printed in the United States of America
10-02
All Rights Reserved

AIX, DB2 Universal Database, the e-business logo, IBM, the IBM logo, iSeries, RS/6000, WebSphere and zSeries are trademarks or registered trademarks of International Business Machines Corporation in the United States, other countries or both.

Domino, Domino.Doc, Lotus, Lotus Notes, Lotus Workflow, Notes, QuickPlace and Sametime are trademarks or registered trademarks of Lotus Development Corporation and/or IBM Corporation in the United States, other countries or both.

Microsoft, Windows and Windows NT are trademarks of Microsoft Corporation in the United States, other countries or both.

Java and all Java-based trademarks and logos are trademarks of Sun Microsystems, Inc. in the United States, other countries or both.

Linux is a registered trademark of Linus Torvalds.

Other company, product and service names may be trademarks or service marks of others.

♻️ Printed in the United States on recycled paper containing 10% recovered post-consumer fiber.

