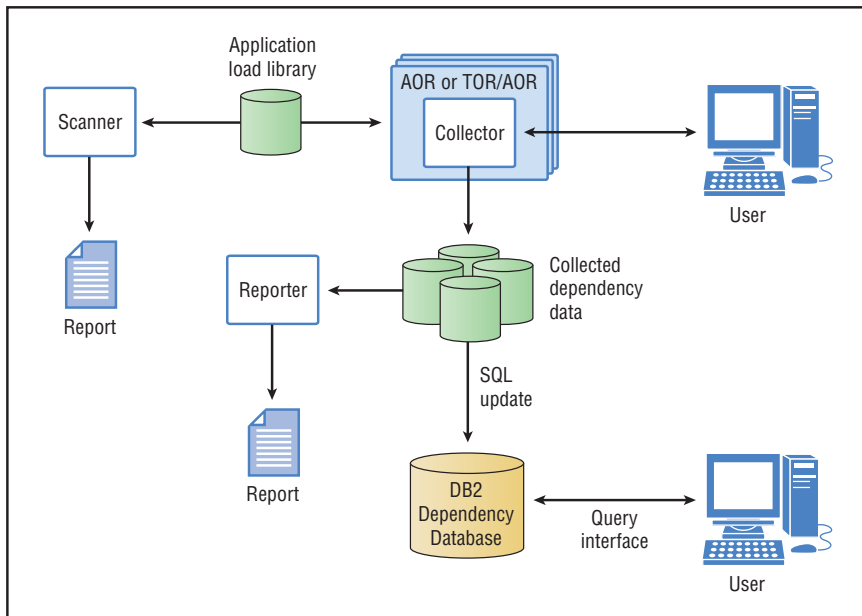


Unlock the potential of CICS systems with more effective business application management.



IBM CICS Interdependency Analyzer for z/OS and OS/390, Version 1.1



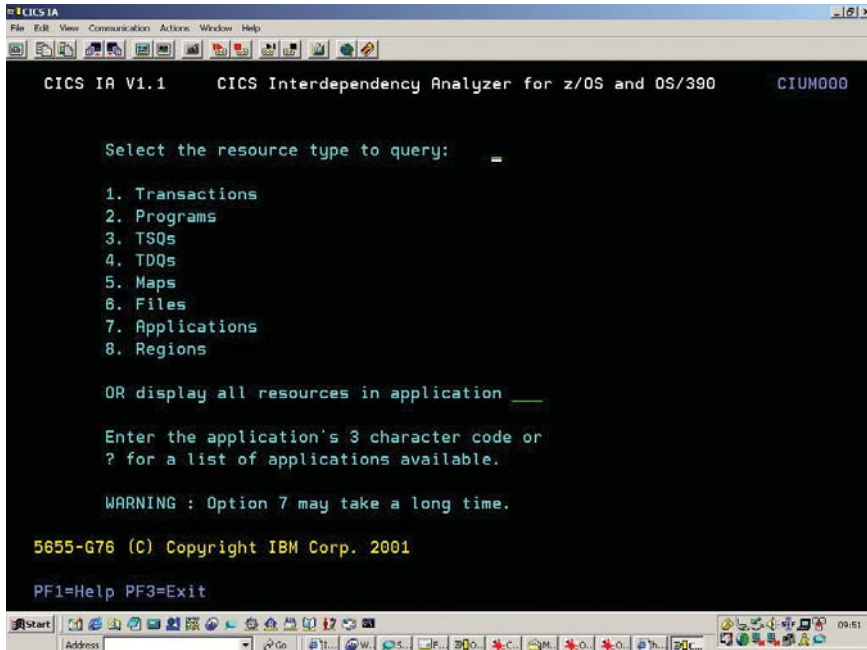
IBM CICS Interdependency Analyzer for z/OS and OS/390, Version 1.1.

Highlights

- **Detects and reports resource interdependencies**
- **Allows online report queries**
- **Helps managers to maintain, improve and migrate business applications**
- **Helps programmers balance workloads across systems more efficiently**

Runtime tool to tap resources and improve system efficiency

IBM CICS® systems have supported business growth for decades, evolving to incorporate new applications and system expansion along the way. Over time, a variety of application development techniques and deployment methods have been used to add new functions, reach higher corporate standards, meet increasingly complex technical requirements and address business pressures. Your applications and services depend on each other and share common CICS resources. The result: Changes to one area of your CICS system can affect many others. System use and management can become difficult and time consuming tasks without a full understanding of the complicated relationships between CICS resources. IBM CICS Interdependency Analyzer for z/OS™ and OS/390® can give you the information you need to unlock the potential of your CICS systems.



Display all resources or selected individual resource types to identify interdependencies within your CICS system.

Maintain, enhance and migrate your business applications more easily

CICS Interdependency Analyzer (CICS IA) automates the collection of CICS resource interdependency data to help you identify resource interdependencies within your CICS system. System managers can gain access—either online or offline—to the collected data stored in an IBM DB2® Universal Database™.

That enables them to better maintain the integrity of your CICS system, enhance the performance of your business applications and migrate applications to new servers. You can split one or many CICS address spaces in response to increased business workload, or even answer simple questions about your CICS system, like what programs are running in a known address space.

Analyze resource interdependencies

CICS IA includes components to help programmers and managers work online or offline to analyze resource interdependency data. The CICS IA collector component intercepts potentially interdependent CICS system commands and records the details of the resources used. The data is efficiently stored in a dataspace and can be offloaded by users to the collected dependency data component. Data sets can be aggregated together and stored in a DB2® database. Routine use of CICS IA collector component helps build a comprehensive database that you can mine online using the query interface component to gain a better understanding of:

- *Selected CICS region contents*
- *Transaction resource run requirements*
- *Program resource use*
- *Unused resources*

Data can also be accessed offline using the CICS IA reporter component to produce a comprehensive printed report of the dependency information for a selected CICS region. The CICS IA scanner component allows you to scan the load module data sets to detect and report the EXEC CICS commands that may cause transaction resource dependency.

Manage heavier workloads

CICS IA helps you analyze resource interdependency without taking valuable development time. Your programmers and managers can make better decisions to split workloads efficiently and move applications across CICS regions. Using interdependency data, you can build a more flexible system that can be adjusted to the unpredictable nature of the e-business marketplace and balance workload across IBM CICSplex® and Parallel Sysplex® systems. The understanding you gain of your application inventory can be used as input into IBM CICSplex System Manager Business Application Services — which provides a centralized resource definition — allowing you to implement CEDA-like resource definition and association across the entire CICSplex platform.

For more information

To learn more about CICS IA for z/OS and OS/390 and to order, visit ibm.com/cics.

IBM CICS Interdependency Analyzer for z/OS and OS/390, Version 1.1 at a glance

Hardware requirements

Any hardware that supports the following:

- IBM CICS Transaction Server for z/OS, Version 2
- IBM CICS Transaction Server for OS/390, Version 1
- IBM CICS/ESA®, Version 4.1¹

Software requirements

System Modification Program/Extended (SMP/E), Version 1 for installation and maintenance and any of the following configurations:

- CICS Transaction Server for z/OS, Version 2.1 and DB2, Version 5 or later, with OS/390, Version 2.8 or later
 - CICS Transaction Server, Version 1.3 and DB2, Version 5 with OS/390, Version 2.8 or later
 - CICS Transaction Server, Version 1.1 and DB2, Version 5 with OS/390, Version 2.6 or later
 - CICS/ESA, Version 4.1¹ and DB2, Version 2.3 with OS/390, Version 2.6 or later
-



© Copyright IBM Corporation 2002

IBM United Kingdom Limited
Hursley Park
Winchester
United Kingdom SO21 2JN

Produced in the United States of America
02-02

All Rights Reserved

CICS, CICS/ESA, CICSplex, DB2, DB2
Universal Database, the e-business logo,
OS/390, IBM, the IBM logo, Parallel
Sysplex and z/OS are trademarks or
registered trademarks of International
Business Machines Corporation in the
United States, other countries, or both.

Other company, product and service
names may be the trademarks or service
marks of others.

¹ To be discontinued December 31, 2002.
Replace with CICS Transaction Server.



G325-5467-00