

# 11093: What's New with System z Monitoring? - Lunch & Learn

Mike Goodman, OMEGAMON Product Manager  
IBM Corporation

March 13<sup>th</sup>, 2012



# Redesigned OMEGAMON V5 provides System z faster, simpler problem management



First two products with being released are OMEGAMON for z/OS and CICS

- Enhanced 3270 User Interface and Install/Config Enhancements
- **Simplify monitoring** with ability to view enterprise summary of multiple sysplexes and subsystems
  - Can save 50 to 75% of time needed to find problems
- **Decrease resource usage** by taking advantage of zIIP specialty processor
  - Up to 73% of CICS SLA processing off-loaded
- **Improve availability** with new 'Find' command to easily locate hung users and connections over entire cicsplex
  - Can reduce fix times from 90 minutes to 2 minutes



## Reduce system outages and increase productivity

# Enhanced 3270 user interface creates Enterprise of information for improved availability



- Understand transactions across multiple sysplexes
- Color coding to provide ability to find and resolve problems quickly
- Eliminates need to move between multiple screens and monitors

“GUI on a green screen”

Command ==> \_\_\_\_\_ Plex ID : \_\_\_\_\_

KOBSTART Enterprise Summary

All Active Sysplexes | | | X

Columns 2 to 6 of 9   ← | → | ↑ | ↓   Rows 1 to 1 of 1

◊Sy Na	ent	Highest LPAR Name	ΔHighest LPAR CPU%	ΔPercent LPAR VMSU Capacity	+LPAR Group Name
_ ZPETPLX2	3	Z2	3	3.4	N/A

**Customize Views** (points to column headers)

**z/OS-wide sysplex view** (points to the entire table)

All Active CICSplexes | | | X

Columns 2 to 6 of 19   ← | → | ↑ | ↓   Rows 3 of 3

ΔCICSplex VName	ΔNumber of VRegions	ΔTransaction VRate	ΔCPU VUtilization	Any SOS Regions	SOS Region
_ OMEGPLEX	1	0 / m	0.3%	No	n/a
_ TESTPLEX	8	10985 / m	18.4%	No	n/a
_ WUIPLEX	1	0 / m	0.0%	No	n/a

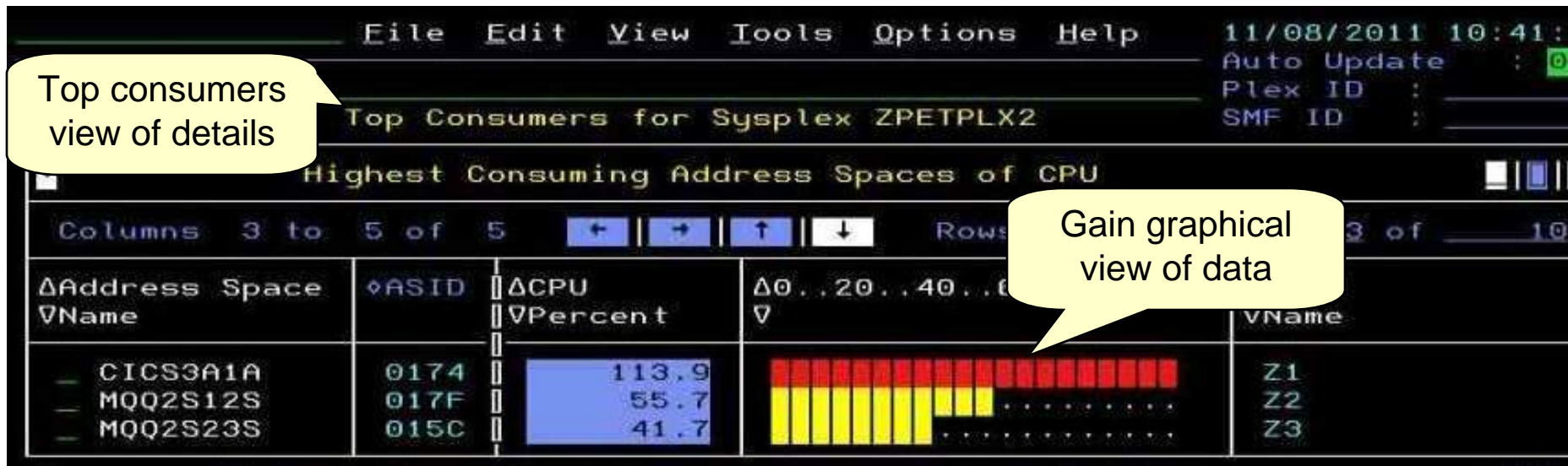
**CICSplex details views** (points to the table)

# Customer prioritized Problem Solving scenarios built into enhanced 3270 user interface



Easy to see and find critical system and sub-system information for improved performance and availability across System z

- Customized screens focused on customer defined problems
- Screen content based on high priority problems
- Includes Healthcheck and Bottleneck analysis



# Example of quickly finding and fixing z/OS Problem



**Screen 1** Exceptions

Columns 3 to 5 of 6 Rows 1 to 8 of 8

◊Sysplex Name	◊LPAR Name	ΔException	Value	Waiting Tasks
- LPAR400J	CANSYSG	Performance_Index	7.50	-
- LPAR400J	CANSYSG	Enqueue	SYSDSN	1
- LPAR400J	CANSYSG	GTF_Active	TRUE	-
- LPAR400J	CANSYSG	CPU_Loop_Index	100.0	-
- LPAR400J	CANSP22	Performance_Index	1.76	-
- LPAR400J	CANSYSL	Performance_Index	4.28	-
- LPAR400J	CANSP12	Performance_Index	1.42	-
- LPAR400J				

New E3270UI highlights problems and simplifies resolving them quickly

Possible Looping Job

**Screen 2** Exceptions

Columns 3 to 5 of 6 Rows 1 to 7 of 7

◊Sysplex Name	◊LPAR Name	ΔException	Value	Waiting Tasks
- LPAR400J	CANSYSG	Performance_Index	6.66	-
- LPAR400J	CANSYSG	Active_Storage_Alert	WARNING	-
- LPAR400J	CANSYSL	Performance_Index	2.50	-
- LPAR400J	CANSP11	Performance_Index	1.42	-
- LPAR400J	CANSP22	Performance_Index	1.30	-
- LPAR400J	CANSP22	CPU_Loop_Index	99.6	-
- LPAR400J	CANSYSG	Performance_Index	4.28	-

Enter 'c' to cancel job

In prior releases this would have taken from 5 to 15 screen interactions

**Screen 3** Cancel Address Space

Command ==> KMSPLX0

Address Space Name : MGRABZ  
ASID : 0044  
Address Space Type : BATCH  
SMF ID : SP22

Press ENTER to continue

Job Cancelled

**Screen 4** Exceptions

Columns 3 to 5 of 6 Rows 1 to 4 of 4

◊Sysplex Name	◊LPAR Name	ΔException	Value	Waiting Tasks
- LPAR400J	CANSP13	Performance_Index	2.85	-
- LPAR400J	CANSP13	Active_Storage_Alert	WARNING	-
- LPAR400J	CANSP22	CPU_Loop_Index	99.6	-
- LPAR400J	CANSYSG	Performance_Index	4.10	-

# New Problem Determination and Management allows Operations and SMEs to see events faster

Increase availability by monitoring over time to identify and fix potential problems before they become outages

- Set exceptions to quickly alert operators across entire sysplex
- Warned about a problem 98% faster then before

KM5MSU0      4-Hour Rolling Average MSU Statistics      SMF ID : SP22

☑ LPAR

4 Hour MSUs.....	6	LPAR Defining	Yes
% LPAR MSU Capacity.....	6.0	Average %	0.0
LPAR Capacity Limit.....	100	Average % 1	100.0
LPAR Capacity Limit Basis. Entitled			

☑ LPAR Group

LPAR Group Name	Average Unused Group MSUs	LPAR Group Capacity Limit	Group LPAR MSU Limit
CANDLE	93	100	100

☑ 5 Minute Intervals

Columns 2 to 6 of 8      Day      48

Time Period	% Time Uncapped	Uncapped MSUs/Hour	% LPAR Uncapped	Uncapped MSUs/Hour
08:59-09:02	100.00	8.83	8.83	0.00
08:54-08:59	100.00	6.59	6.59	0.00
08:49-08:54	100.00	6.52	6.52	0.00
08:44-08:49	100.00	7.25	7.25	0.00

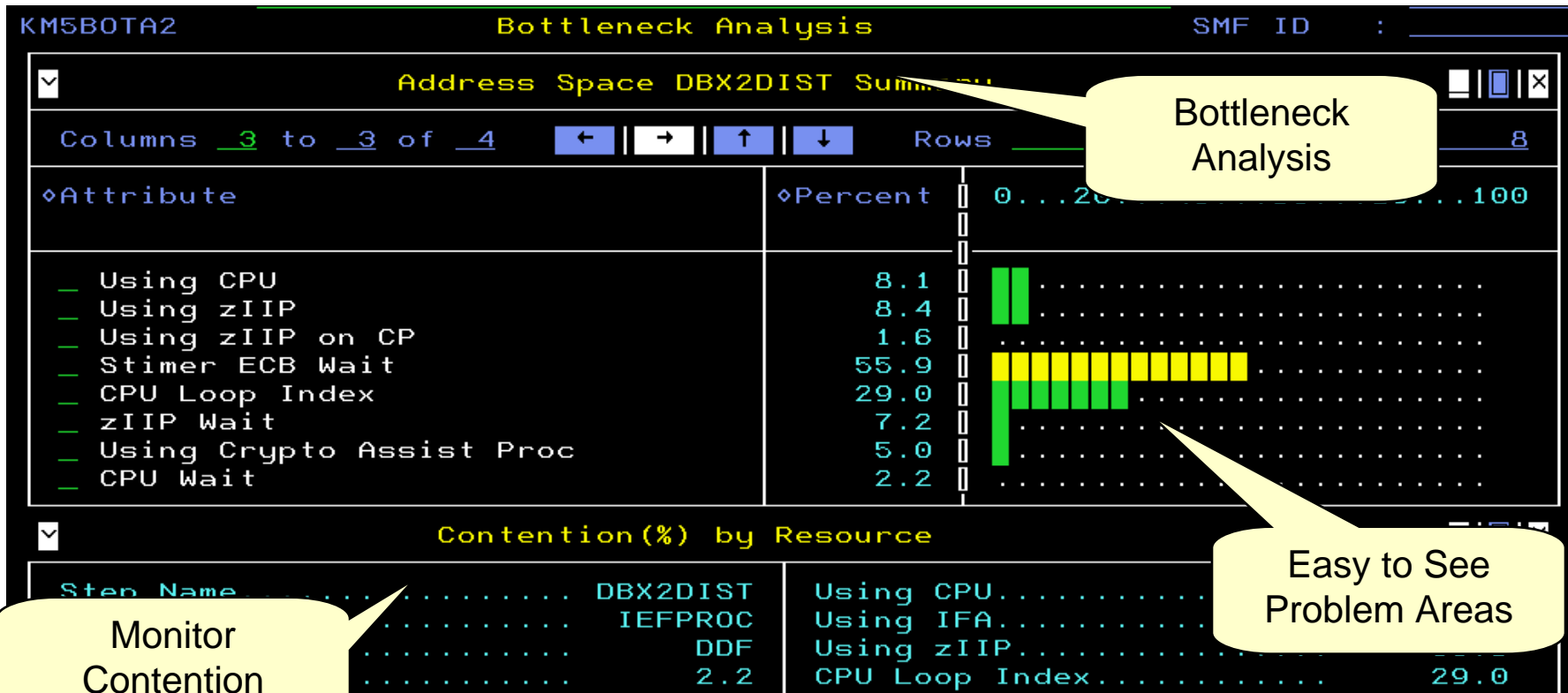
4 Hour Rolling Average

5 minute intervals

# Bottleneck Analysis provides visibility to potential problems before they become outages

Quickly find out where resource contentions and shortage exist

Integrated into e3270ui to allow for easier problem monitoring



# Healthcheck analysis assists in finding and fixing problems quickly incorporated in e3270ui

*Regularly monitor key IT resources and usage*

Select and see best practices recommendations on how to fix

**Health Checker** SME ID: 72

**Health Check Status** Health Check

Proc Name..... HZSPROC	Task Identifier..... HZSPROC
Status..... Active	Exceptions SevMed..... 6
Checks Deleted..... 0	Exceptions SevLow..... 6
Checks Eligible..... 146	Exceptions SevHigh..... 2
Checks NotDeleted..... 177	Exceptions SevNone..... 0
Checks Ineligible..... 31	Exceptions Outstanding.... 14
Checks DeletePending..... 0	

Columns 1 to 2 of 2 ← | → | ↑ | ↓ Rows 1 to 1 of 1

Version Identifier	+Parmlib Members	
z/OS 01.13.00	LC, IA, CY	

**Health Checks** 1 to 11 of 177

Columns 1 to 3 of 26 Sorted, Color Coded Resource Status

ΔCheck Name		ΔCheck Status
— XCF_CDS_SPOF	IBMXCF	EXCEPTION-HIGH
— USS_PARMLIB_MOUNTS	IBMUSS	EXCEPTION-HIGH
— VSM_SQA_THRESHOLD	IBMVSM	EXCEPTION-MEDIUM
— XCF_CDS_MAXSYSTEM	IBMXCF	EXCEPTION-MEDIUM
— XCF_CF_STR_POLICYSIZE	IBMXCF	EXCEPTION-MEDIUM
— XCF_CF_ALLOCATION_PERMITTED	IBMXCF	EXCEPTION-MEDIUM
— XCF_CF_STR_AVAILABILITY	IBMXCF	EXCEPTION-MEDIUM
— VSAMRLS_CFCACHE_MINIMUM_SIZE	IBMVSAMRLS	EXCEPTION-MEDIUM
— USS_PARMLIB	IBMUSS	EXCEPTION-LOW
— GRS_AUTHQVLV_SETTING	IBMGRS	EXCEPTION-LOW
— CSV_APF_EXISTS	IBMCSV	EXCEPTION-LOW



# Unix workloads growing on z/OS as applications are ported to mainframe

- USS comes included in OMEGAMON XE on z/OS
- Complete view of Unix overhead and activities available and customizable with enhanced 3270 user interface

Command ==> KM5USS z/OS UNIX System Services Overview Plex ID : ZPETPLX2 SMF ID : Z2

**UNIX Kernel**

ΔSyscall ▽Rate	ΔCPU% ▽	ΔI/Os ▽Rate	ΔNumber of ▽Processes	Δ...
0.000	0.00	0.000	495	1900

**Dubbed Address Spaces**

ΔAddress Space ▽Name	ΔASID ▽	ΔCPU ▽Time%	▽CPU _Seconds	ΔType ▽	ΔService ▽Class	ΔWorking ▽Set
CICS3A2A	0186	5.32	50707.952	STC	CI2V60	4098
CSQ2CHIN	0199	0.00	21565.296			
CICS2A2A	0184	0.00				
TCPIP	00EC	0.00				
CICS2T2A	0185	44.01	6940.055			
VTAM	00DC	0.00	5430.512			

Unix System Services

z/OS address spaces running Unix workload Running on CICS

# Come talk to OMEGAMON Experts and see detail capabilities and value



## Additional OMEGAMON V5.1 sessions

### 10383 New Problem Solving capability with OMEGAMON v.5.1 on z/OS

- Tuesday, March 13, 2012: 4:30 PM-5:30 PM
- Walnut (Omni Hotel CNN Center)

### 10385 Solving CICSplex Performance Problems using OMEGAMON v5.1 for CICS on z/OS

- Wednesday, March 14, 2012: 4:30 PM-5:30 PM
- Walnut (Omni Hotel CNN Center)

Come by the OMEGAMON ped in the Technology Exchange to see live demo



**SHARE**  
Technology • Connections • Results

Thank  
You