



System z – A Smart System For A Smarter Planet

Unify Mainframe
And Distributed Development

Fit For Purpose Strategy Requires Common Development Tools

System z is a great platform but ...
my Java developers don't talk to my
mainframe developers



**Service Oriented Finance
Development Manager**

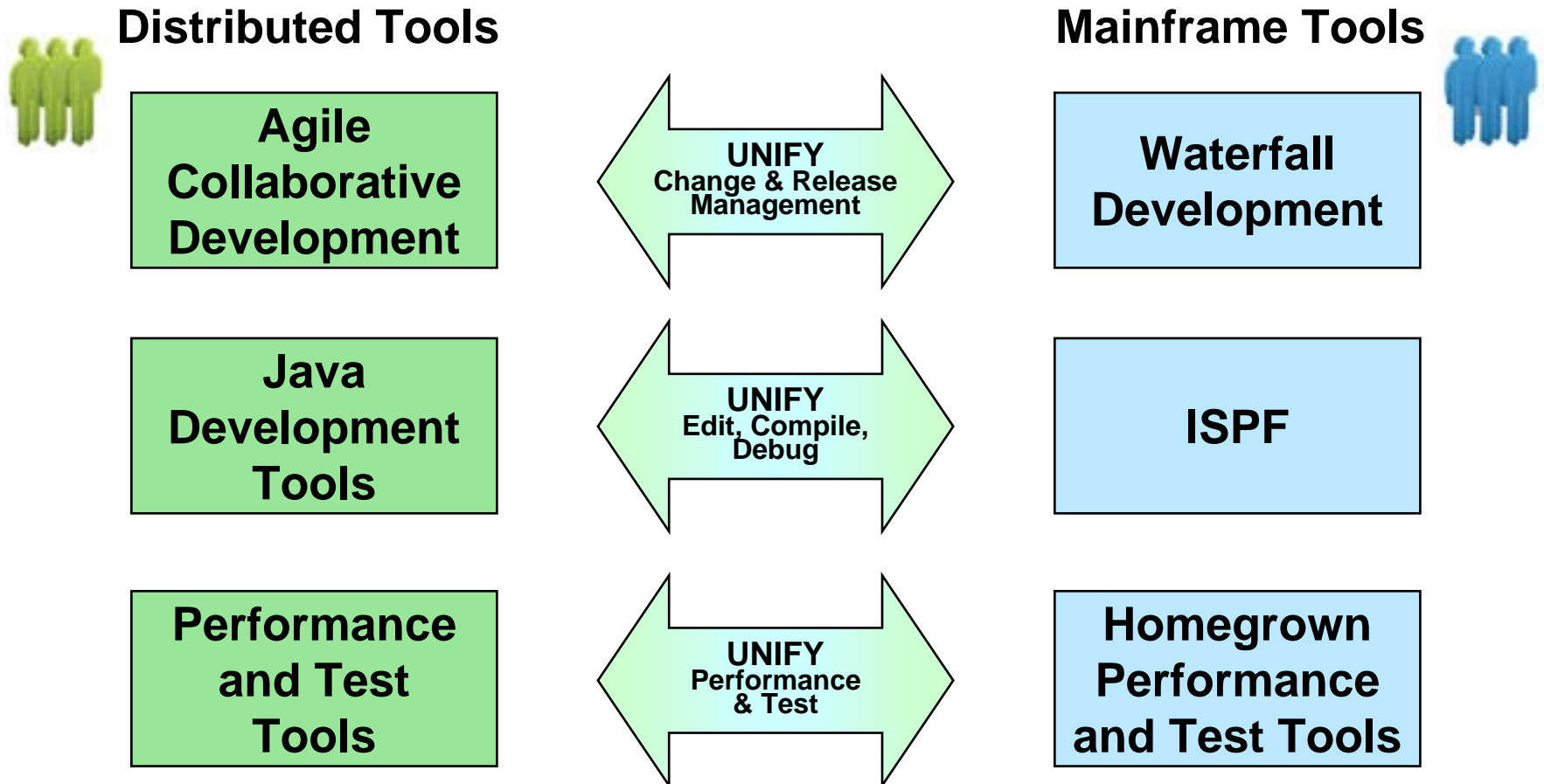
A unified development
environment will enable
your fit for purpose
strategy . . .

And improve collaboration
and skills transfer



IBM

Unify Development Environments



- Common shared tools and processes that look and behave in the same way for all platforms

Unify Change And Release Management

- Rational Team Concert for System z
 - ▶ Server-based collaboration software for development teams
 - ▶ Runs on z/OS, Linux on System z, or distributed servers
- Accessed from Eclipse-based tools or browsers
- Key capabilities
 - ▶ Source code control
 - ▶ Track change activity with status and visibility
 - ▶ Built-in customizable processes
 - ▶ Drive builds by activity
 - ▶ Process governance
- Can deliver unified development tools for all your development teams



Demo: Rational Team Concert For System z

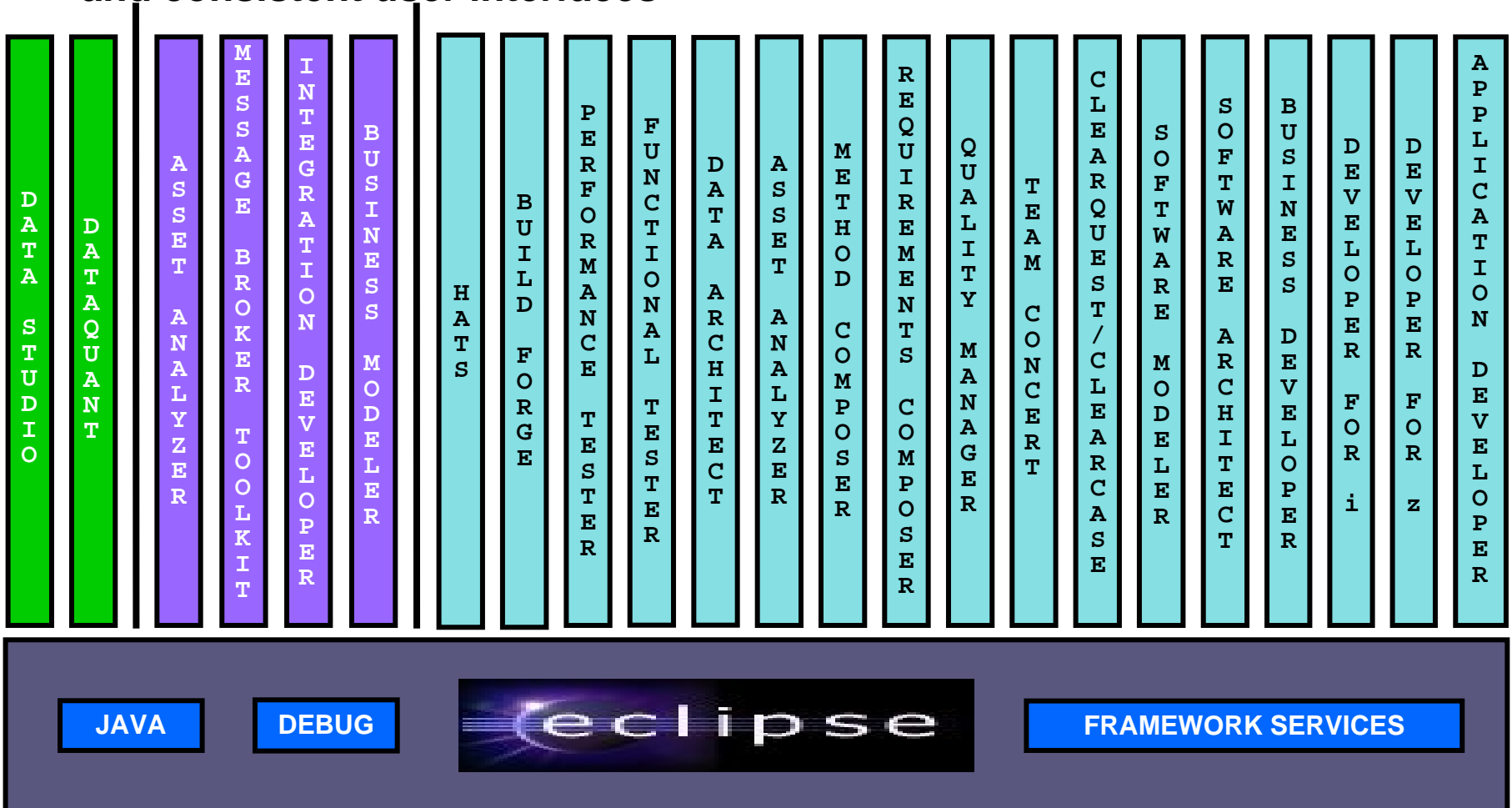
1. In this demo the Project Manager will create a new Work Item and assign it to a Developer
2. In the next demo the Developer will find the newly assigned Work Item and complete it

The screenshot displays the Rational Team Concert interface for a project named 'Team 1's Plan'. The interface is divided into several sections:

- Left Panel:** A tree view showing the project structure, including 'Repository Connections', 'SOF Modernization Project', 'Builds', 'Data Set Definitions', 'Language Definitions', 'Plans', 'Recently Viewed Plans', 'My Current Plans', 'SOF Dev Plan 1 [M1]', 'Team 1's Plan [M1]', 'Current Plans', 'All Plans', 'Reports', 'Source Control', 'Work Items', 'Debug', 'Favorites', 'Feeds', 'My Repository Workspaces', 'My Team Areas', and 'Work Item History'.
- Main Panel:** A list of team members and their assigned work items. The work item 'fix defects in two files for Natick' is highlighted with a blue circle. Other work items include 'Define a new build', 'Share code with Jazz Source Control', 'Define permissions', and 'Discuss feature list with stakeholders'.
- Right Panel:** A 'View As' section with options like 'Developer's Dashboard', 'Planned Time', 'Ranked List', 'Team Folders', and 'Work Breakdown'. Below it are 'Actions' (Edit | Copy, Re-sort) and 'Exclude' options (Assigned Items, Empty Groups, Estimated Items).
- Bottom Panel:** A table showing a list of work items. The table has columns for 'I.', 'Status', 'P', 'S', 'Summary', 'Owned By', and 'Created By'. The work items listed are: 'fix defects in two files for Natick' (Owned by Haze, Created by Jess), 'Discuss feature list with stakeholders' (Owned by Li, Created by Jess), 'Fix text on splash screen' (Owned by Monk, Created by Jess), and 'Define permissions' (Owned by Jess, Created by ihm1000).

Unify Edit, Compile And Debug Tools

- Rational Team Concert and Developer for System z are built on Eclipse
- Open Source Eclipse framework enforces consistent tool behavior and consistent user interfaces



A subset of tools is shown!

Edit, Compile And Debug With ISPF

Wait an indeterminate time for the job queue and possible failed completion

Start here

submit compile job **X**

swap to SDSF

select job

edit JCL

find error msg

find code line
(remember error)

swap to edit session

exit source

change code

find code line

edit source

exit JCL

```

Session A - [32 x 80]
File Edit View Communication Actions Window Help
File Edit Edit_Settings Menu Utilities Compilers Test Help
EDIT DNET045.STEW.COBOL(IGYIYP) - 01.73 Columns 00001 00072
***** Top of Data *****
000010 IDENTIFICATION DIVISION.
000020 PROGRAM-ID. CALLIYP1.
000030 AUTHOR. IBM PROGRAMMER 33333.
000040 INSTALLATION. STL
000050 DATE-WRITTEN. JAN 25, 1997.
000060 DATE-COMPILED.
000070
000080
Command ==> Scroll ==> PAGE
F1=Help F2=Split F3=Exit F5=RFind F6=Rchange F7=Up
F8=Down F9=Swap F10=Left F11=Right F12=Cancel
File Edit Edit_Settings Menu Utilities Compilers Test Help
EDIT DNET045.STEW.LISTING(IGYIYP) - 01.00 Columns 00001 00072
002769 DSA WILL BE ALLOCATED FOR 00000320 BYTES
002770 0CONSTANT GLOBAL TABLE FOR DYNAMIC STORAGE INITIALIZATION AT LOCATION 00
002771 0INIT0 CODE FOR DYNAMIC STORAGE INITIALIZATION BEGINS AT LOCATION 006700
002772 +- Statistics for COBOL program CALLIYP1:
002773 + Source records = 453
002774 + Data Division statements = 47
002775 + Procedure Division statements = 91
002776 0End of compilation 1, program CALLIYP1, no statements flagged.
002777 0Return code 0
***** Bottom of Data *****
Command ==> Scroll ==> PAGE
F1=Help F2=Split F3=Exit F5=RFind F6=Rchange F7=Up
F8=Down F9=Swap F10=Left F11=Right F12=Cancel
38/01
  
```

- Programmer goes through a sequence of screens in order to get the job done
 - ▶ ISPF 3.4 listings, job listings, SDSF outputs, etc.
- Programmer is constantly flipping back and forth between these ISPF screens
 - ▶ Easy for experienced mainframe programmers but not for newbies

Edit, Compile And Debug With Rational Developer For System z

Modern development for System z

- Works like other IBM tools for distributed platforms

RDz supports Enterprise Modernization

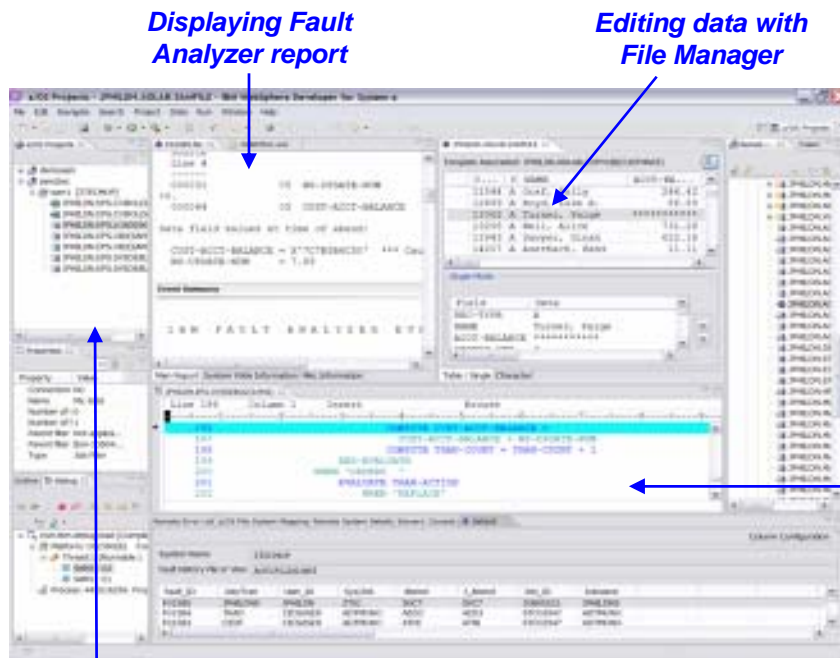
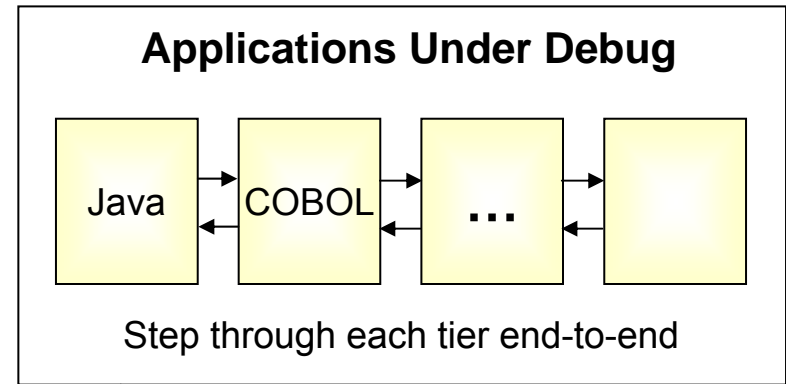
- Support for COBOL, PL/I, C, C++, HLASM, Java, EGL and Web services
- Supports existing and new runtimes
 - CICS, IMS, Batch, USS, DB2, WAS
- Interactive access to z/OS for
 - Development, debug, job generation, submission, monitoring, command execution

The image displays several screenshots from the Rational Developer for System z (RDz) environment, illustrating its capabilities:

- Remote System Explorer:** Shows a tree view of remote systems and projects. Annotations include "Disconnected -vs- Connected" pointing to connection status indicators, and "MVS PDS members" pointing to a list of files like SAWDUST.ASM.LISTING.
- Configurable Editor:** Shows a code editor with a JCL program. Annotations include "Configurable Editor" pointing to the editor window and "USS Command Shell" and "TSO Command Shell" pointing to shell options.
- Remote System Details:** Shows a table of job details. An annotation "Data set characteristics" points to the "Job Filter" section.
- JES subsystem view:** Shows a table of JES jobs, with an annotation "JES subsystem view" pointing to the job list.
- CICS Service Flow Modeler:** Shows a graphical flow diagram of a CICS service flow, with an annotation "CICS Service Flow Modeler" pointing to the diagram.
- Account Details:** Shows a screen capture of a CICS account details screen, with an annotation "ACCOUNTS" pointing to the data.
- Shipping Process:** Shows a flow diagram for a shipping process, with an annotation "order/shipping" pointing to the flow.

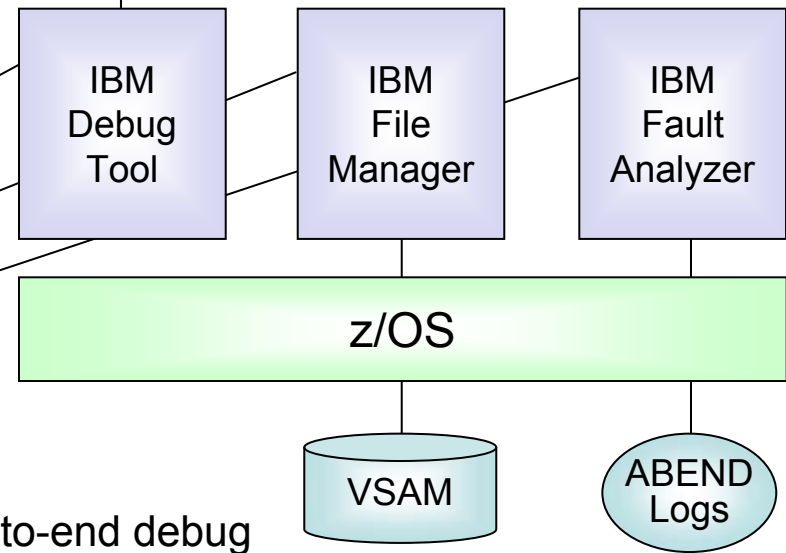
Interactive Problem Determination: RDz Integrates With Host-based Tools

- Work with the PD Tools through the RDz client
- Easy access to all three tools at the same time
- Debug and step through multi-tier applications
 - ▶ Distributed *and* mainframe
 - ▶ Same debugger as for distributed systems



Developing System z application with RDz

RDz Workstation



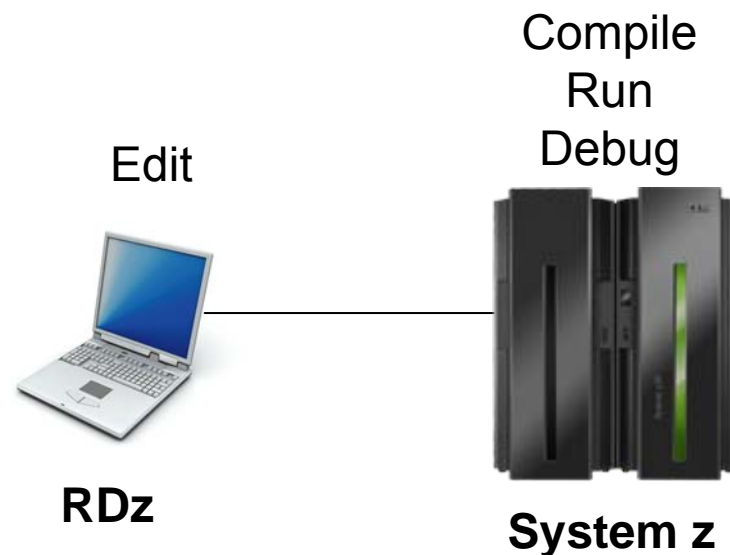
Debugging application with Debug Tool

- End-to-end debug
- Edit VSAM data
- Analyze ABEND logs!

DEMO: Work With COBOL And Java Using Rational Developer For System z

- Perspectives and views
- Remote System Explorer
- Working with host datasets
- Productivity features

- Based on the assigned work item, the Developer will fix the problem code using the language-sensitive COBOL and Java editors



RDz Can Extend Mainframe Assets For Service Oriented Architecture

- Wizards generate Web services runtime code
 - ▶ CICS Web services
 - ▶ IMS Web services
 - ▶ Java Web services
- CICS Service Flow Modeler
 - ▶ Supports CICS Service Flow Feature
 - ▶ Wizards to build service flows out of your existing COMMAREA-, WSDL-, and Terminal-based CICS applications
 - ▶ Then expose flows as Web services
- And more...

HATS Can Also Extend Existing Applications With Minimal Cost – Host Access Transformation Services

What can you do with HATS?

- Quickly and easily create Web, portal, mobile or rich client applications from green-screen applications
 - ▶ Without programming
 - ▶ Low skills requirement
 - ▶ Transformation “on the fly”
 - ▶ Iterative development process
 - ▶ Highly customizable
 - ▶ Eclipse-based tool
- Reuse existing assets
 - ▶ As Web services, in an SOA
- Create work flow from multiple apps
- Integrate with other Web, portal, and rich client applications

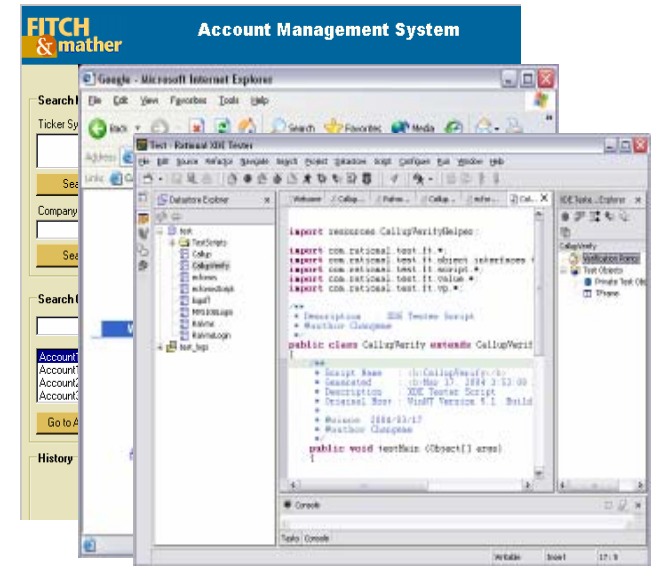


Unify Testing With Rational Functional Tester

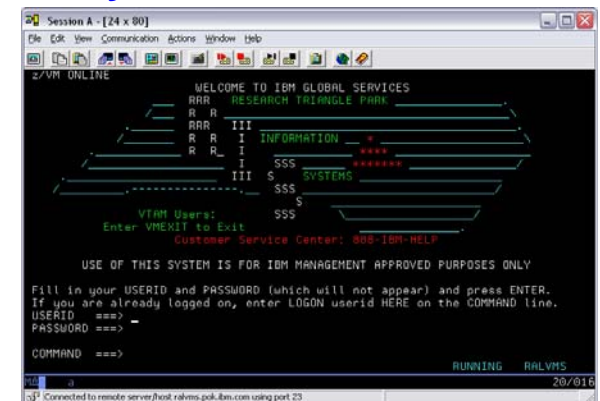
- Use Rational Functional Tester
 - ▶ Record/Enhance/Execute scripts on Windows/Linux
 - ▶ Functional test any .NET, Web, or Java application (z or non-z)
- Eclipse-based
- Use Rational Functional Tester Extension for Terminal-based Applications
 - ▶ Record/Enhance/Execute scripts on Windows
 - ▶ Functional test System z terminal-based applications



.NET, Browser, Java UI



System z Terminal UI



Unify Performance Testing With Rational Performance Tester And IBM Workload Simulator

■ Use Rational Performance Tester for z/OS

- ▶ Develop scripts on Windows or Linux
- ▶ Execute scripts on z/OS
- ▶ Performance test any Web application (z or non-z)
- ▶ Eclipse-based



Any Web Application

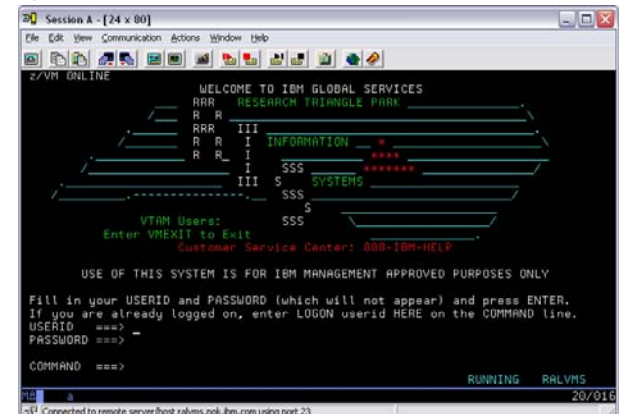


■ Use IBM Workload Simulator for z/OS and OS/390

- ▶ Develop scripts on z/OS
- ▶ Execute scripts on z/OS
- ▶ Performance test any System z terminal application



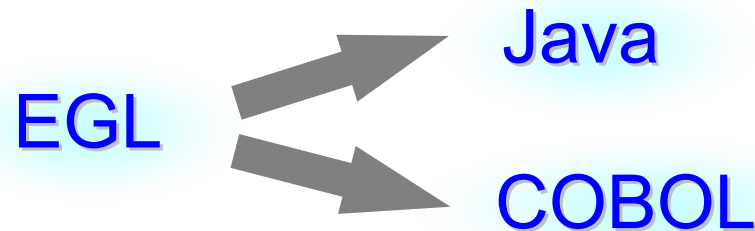
System z Terminal Application



EGL – The Most Versatile Language

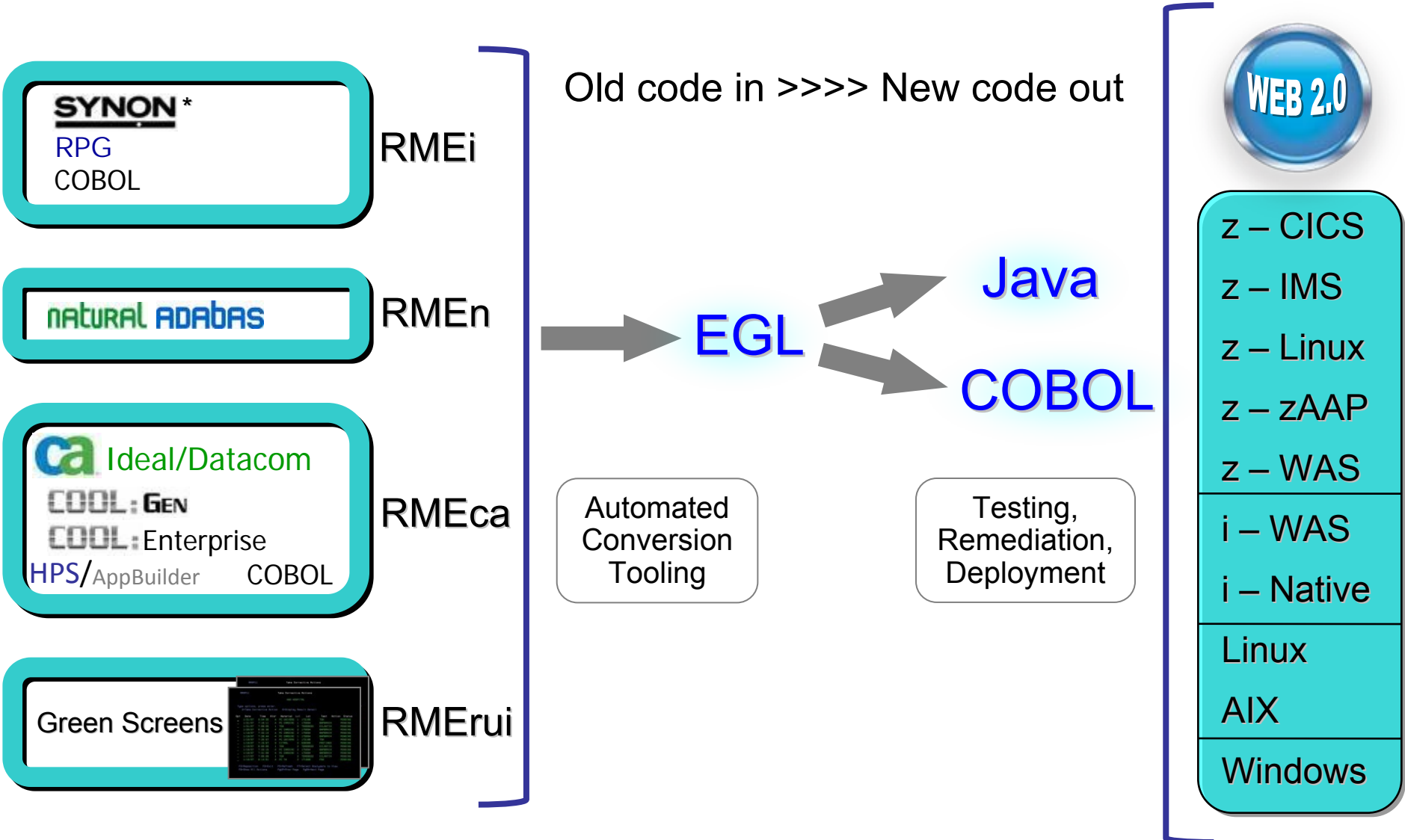
Enterprise Generation Language

- Cross-platform, cross-tier 4GL for all types of developers and apps
- Write in EGL, generate efficient COBOL or Object-Oriented Java

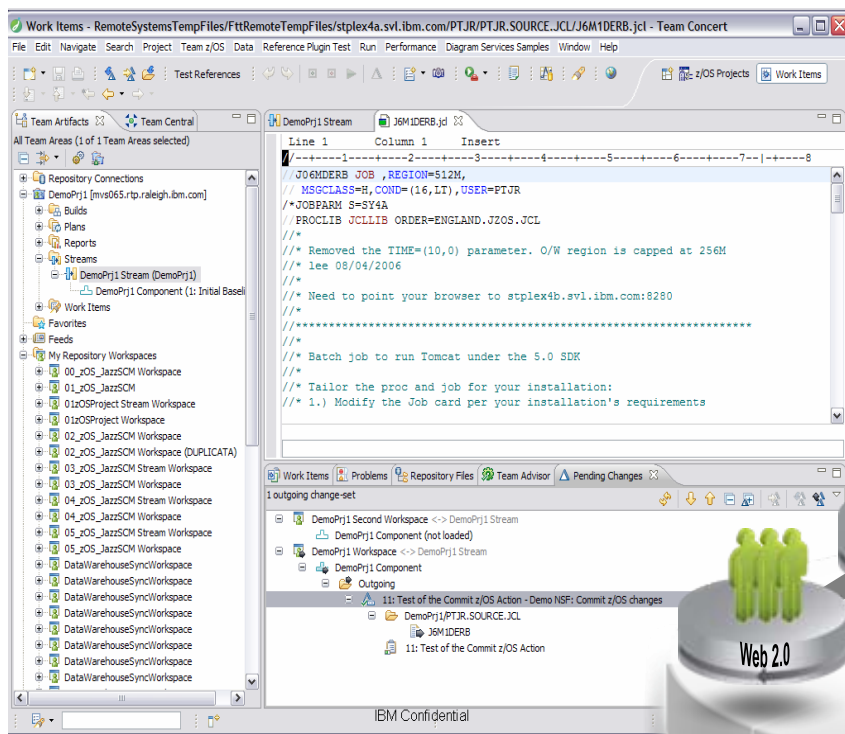


- ▶ Choose based on requirements
- ▶ Web 2.0 and SOA built in
 - Generate mobile GUI front ends to mainframe applications
 - For example, "Service" is a keyword in the language
- Allows mainframe programmers to become Web developers
 - ▶ Building Rich UI applications
- Modernize aging systems
 - ▶ Good target language for evolving existing Natural, Ideal, Cool:Gen, RPG, COBOL, Synon, and other applications

Use Rational Migration Extensions To Move From Expensive Third Party Software



One Set Of Software Delivery Tools For All Developers



- Same look and feel
- Same UI concepts
- Modern productivity accelerators
- Lower the threshold for newer mainframe developers to be productive

