



# CICS V5.1

## *Applications*

**Presenter – Title**

**Date**



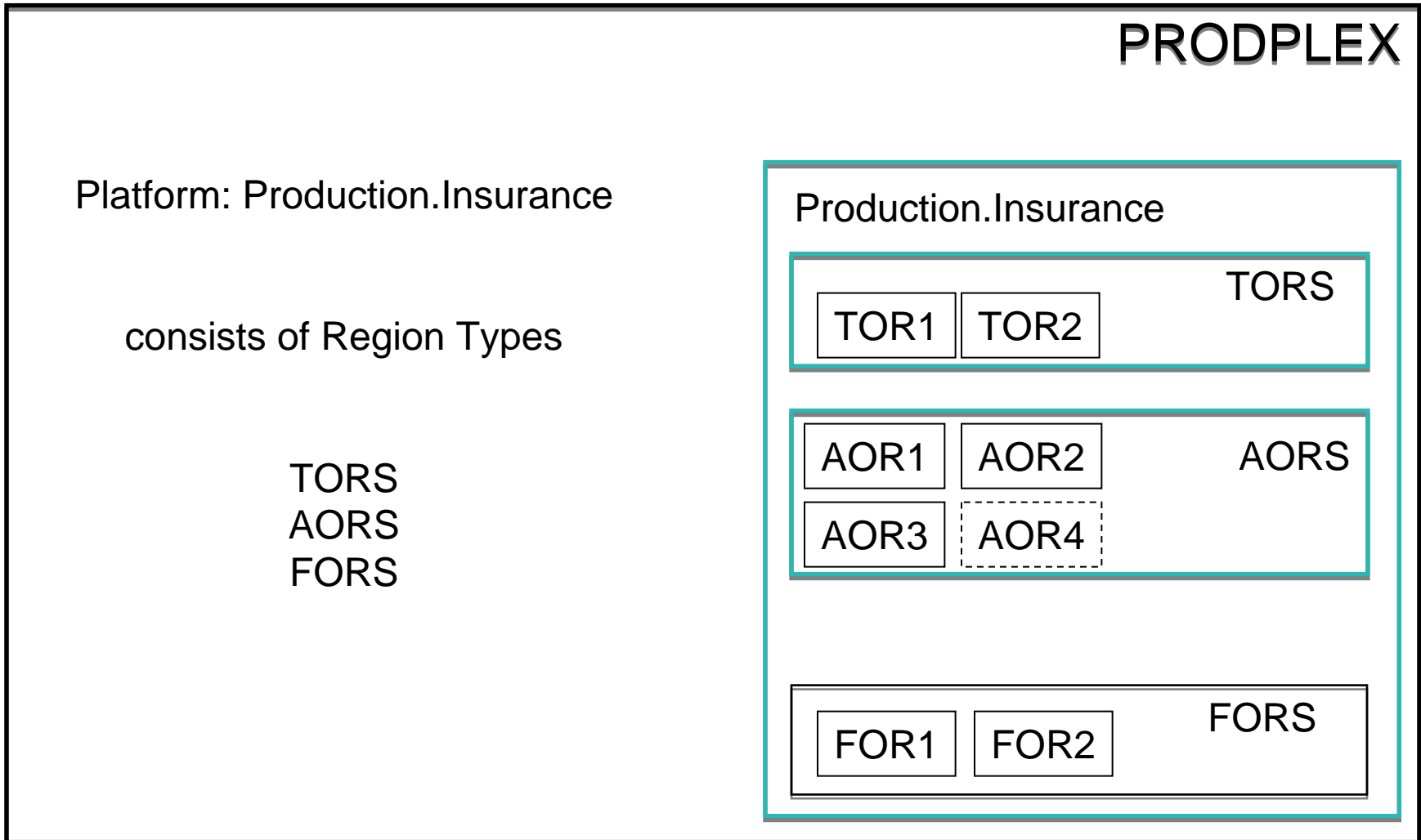


## Session Agenda

- **What is an Application?**
  
- **Application Packaging**
  - Bundles
  - Application Projects
  
- **Application Deployment**
  - Bindings
  - Appdef
  
- **Modernization and the Liberty web container**

# CICS Platform as a Service Review

- A review of a CICSplex and a Platform





## Application Deployment

- **What is a CICS application?**
  - *a collection of related programs and other resources that together perform a business operation*
  
- **How is a CICS application invoked?**
  - *Transaction ID for 3270*
  - *EXEC CICS START*
  - *URIMAP for a web request*
  - *...*
  
- **What resource (dependencies) does a CICS application need?**
  - *VSAM files or DB2 tables*
  - *Temporary Storage, Transient Data or MQ queues*
  - *Programs*
  - *JVM*
  - *...*



## CICS BUNDLE Resource

- **Collection of CICS resources**
  - Managed as a logical unit
    - All bundle parts are managed together
      - If any part is disabled, the whole bundle is disabled
    - Bundle artifact is migrated from test to production
      - Similar to a load module
  - Resource dependencies can be specified
    - e.g. FILE(ABC) must be present for the bundle to install



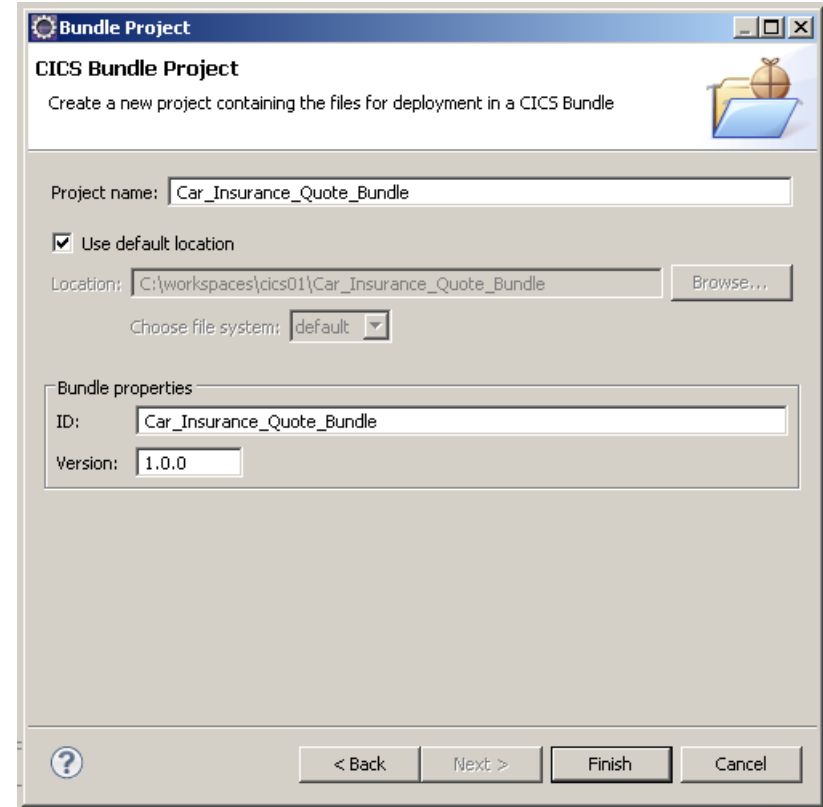
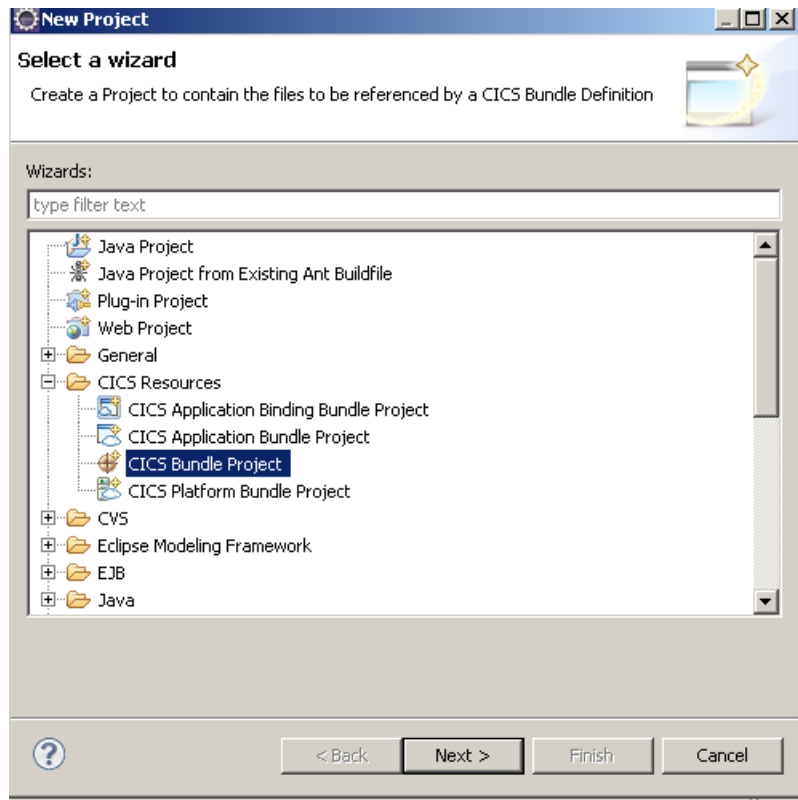
## Application Deployment

### ▪ **Support for application packaging**

- Use the CICS Explorer to define the resources, dependencies and application code for a CICS application
  - Create a Bundle Project(s)
    - Specify resources to define
    - Specify resource dependencies
- Create an Application Project that describes the application
  - Application name, description and version
  - References to CICS bundles
- Allows you to manage the application as a single entity

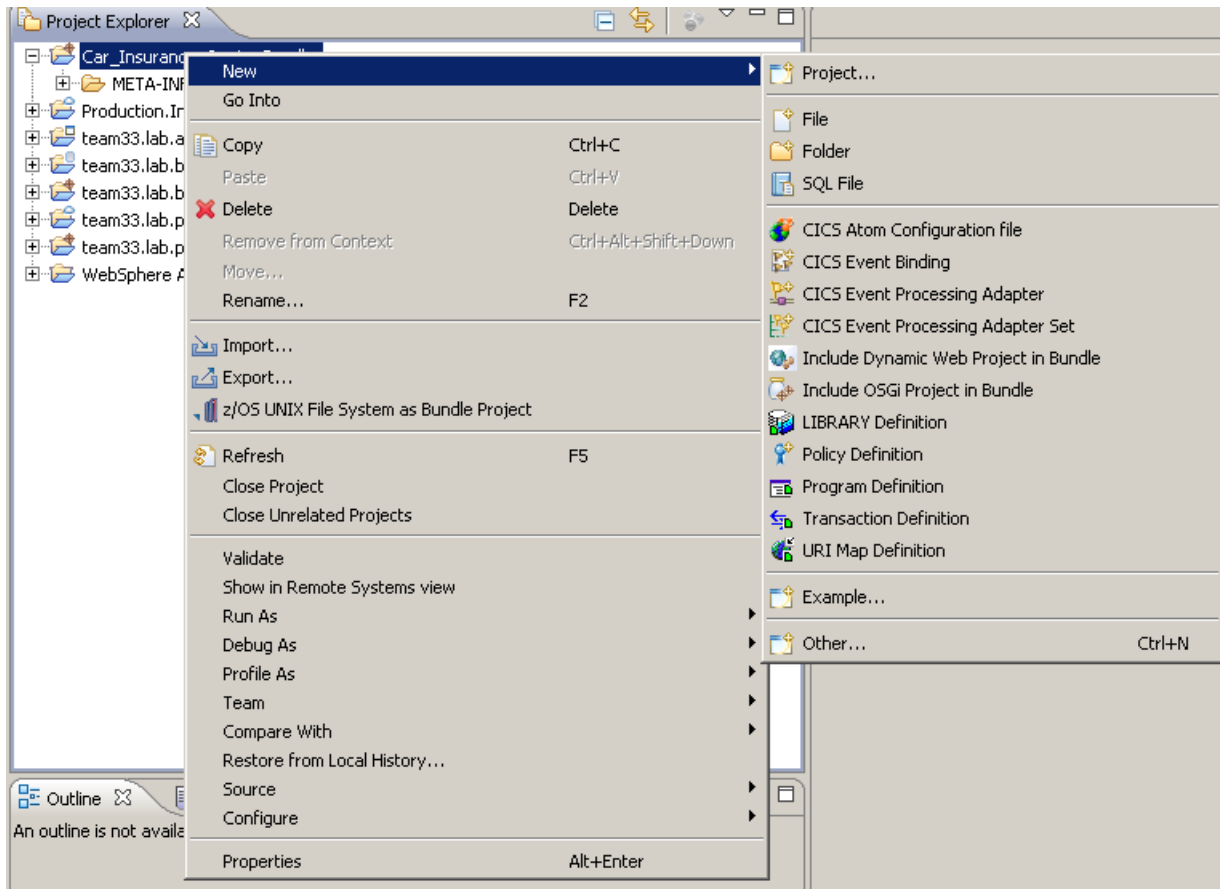
# Application Deployment...

## ■ Creating the Bundle Project



# Application Deployment...

- Add entries to the bundle project





# Application Deployment...

- Create the resource definitions

**New Program Definition**

Create Program Definition

Bundle: Car\_Insurance\_Quote\_Bundle

Name: ICRATE

Description: Car Insurance Rating

Program Type

Assembler, C/C++, COBOL, or PL/I

Java

Service Name: \_\_\_\_\_

JVM Server: \_\_\_\_\_

Create an Application entry point

Operation name: \_\_\_\_\_

Open editor

Finish Cancel

**New Transaction Definition**

Create Transaction Definition

Bundle: Car\_Insurance\_Quote\_Bundle

Name: \_\_\_\_\_

Description: \_\_\_\_\_

Program Name: \_\_\_\_\_

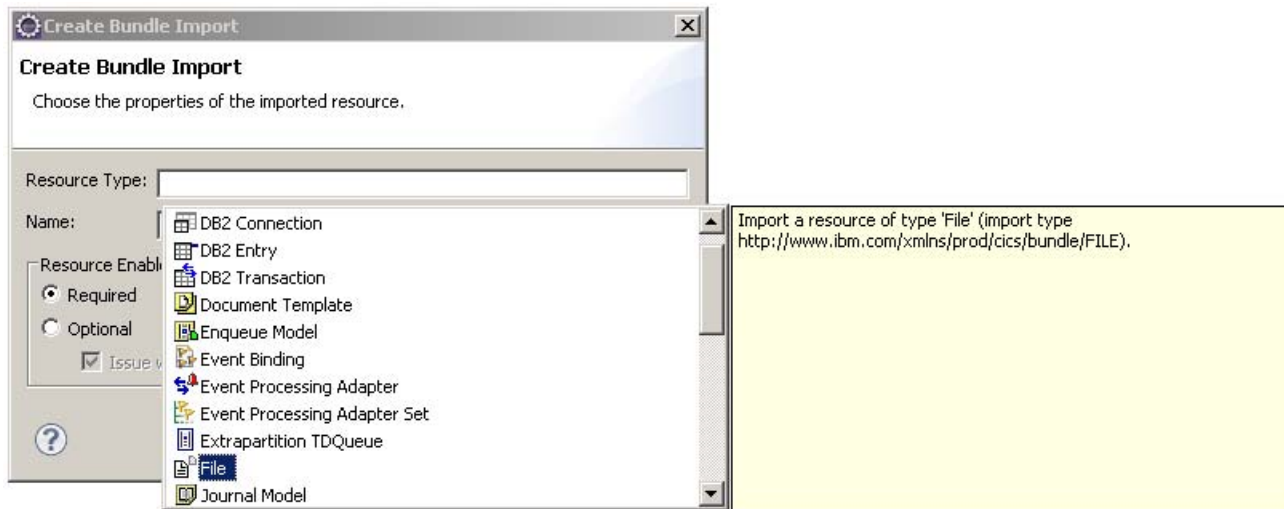
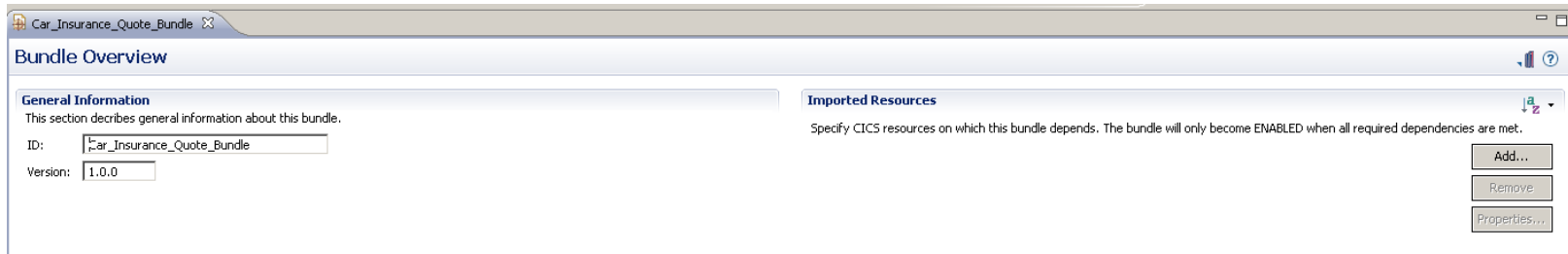
Remote System Name: \_\_\_\_\_

Open editor

? Finish Cancel

# Application Deployment...

- Specify the resource dependencies for this bundle





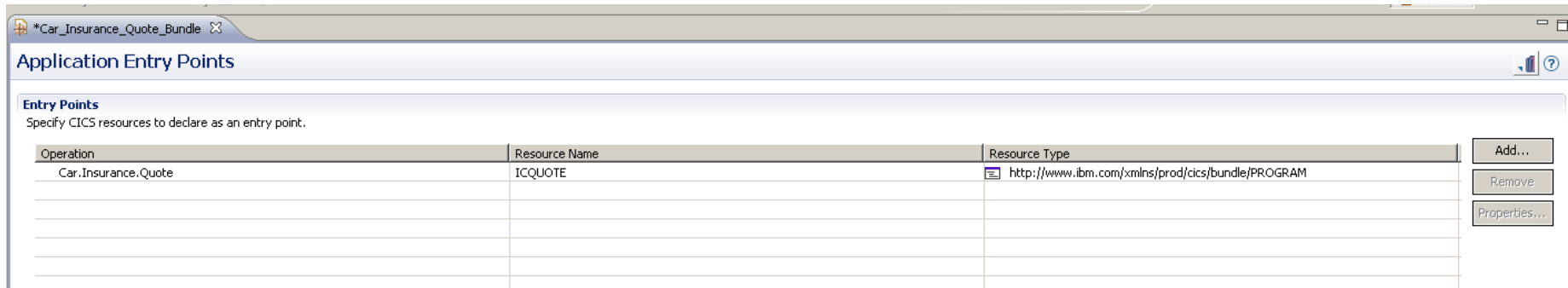
## Application Deployment...

### ▪ Application Entry Points

- Associate CICS tasks with an application
  - Define application entry point on a BUNDLE program definition
  - Define application entry point with SET PROGRAM OPERATION
    - Only sets the OPERATION attribute
- Application can comprise one or more tasks in different regions
  - Application context will flow between regions
    - MRO and IPIC connected regions
- Application context data will be included in monitoring data
  - Application name, Platform, Version, Operation


# Application Deployment...

- View or add and application entry points



**Application Entry Points**

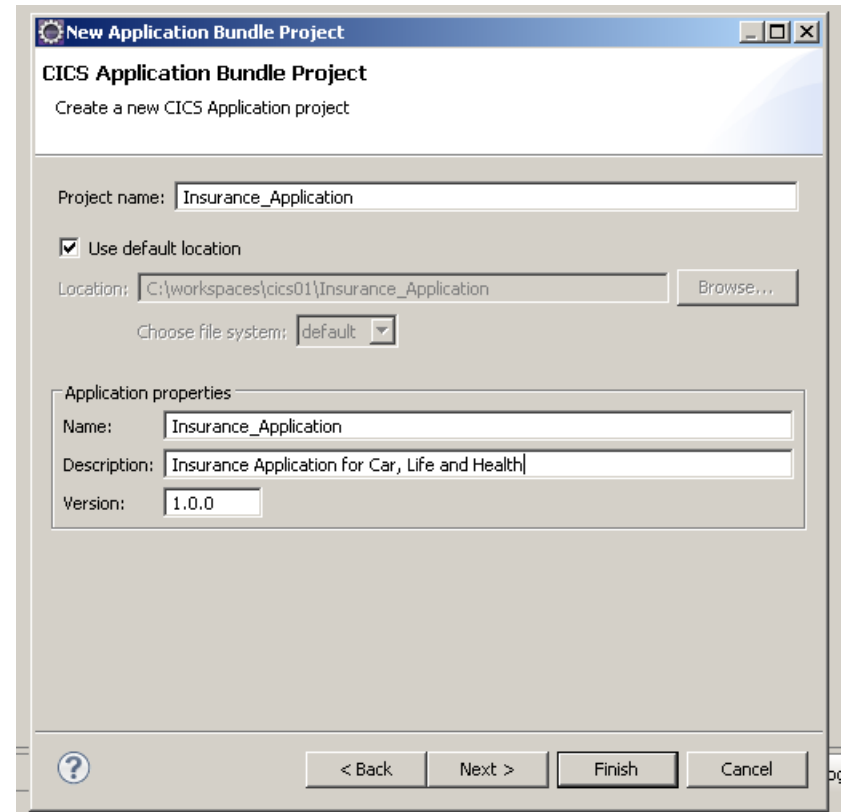
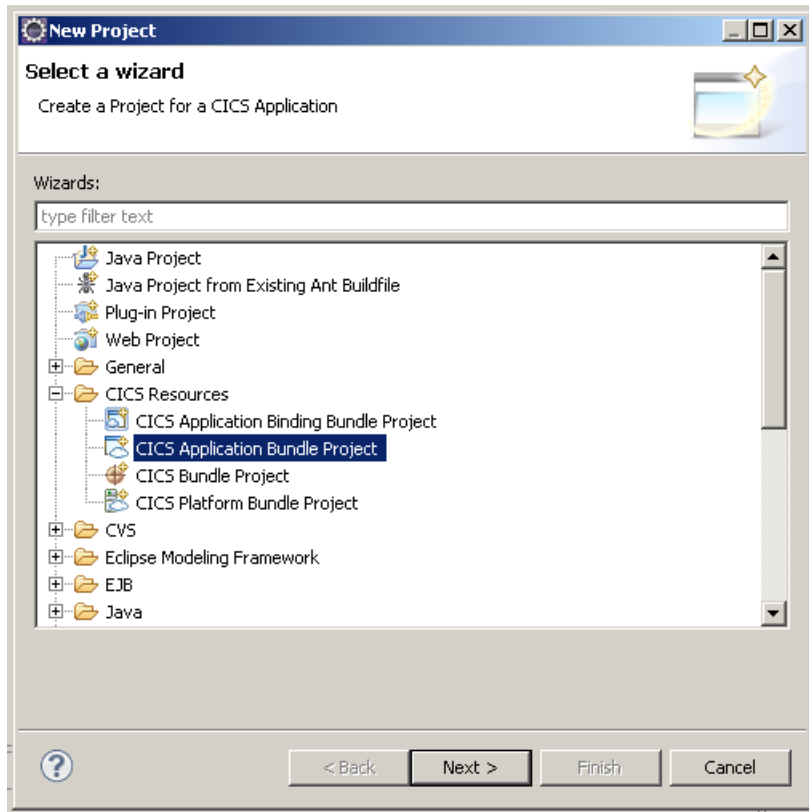
Specify CICS resources to declare as an entry point.

Operation	Resource Name	Resource Type
Car.Insurance.Quote	ICQUOTE	 http://www.ibm.com/xmlns/prod/cics/bundle/PROGRAM

Buttons: Add..., Remove, Properties...

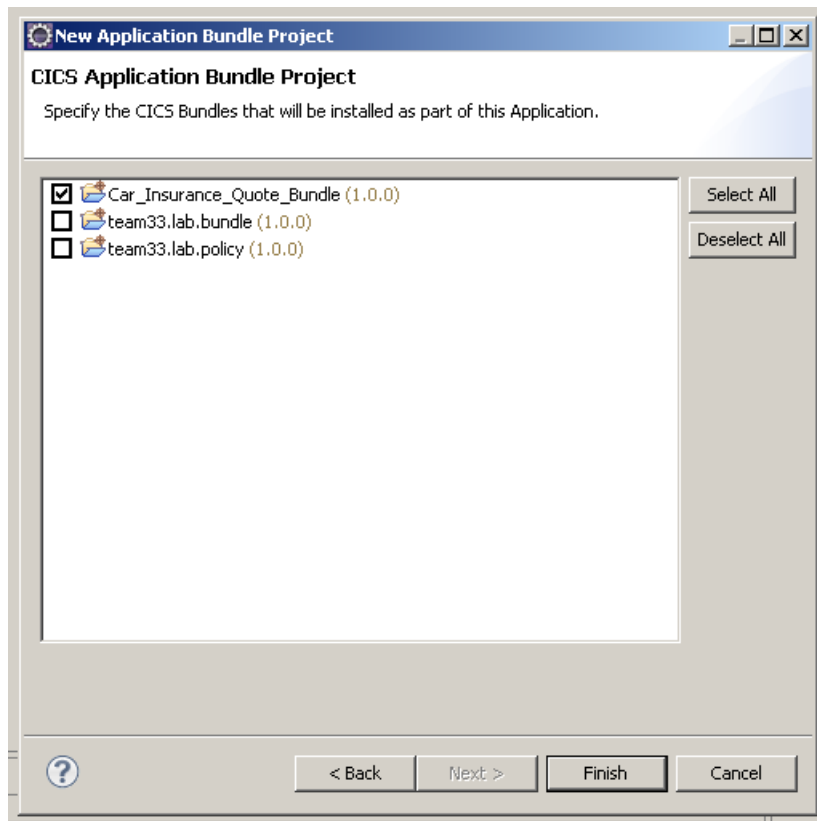
# Application Deployment...

## ■ Creating the Application Project



## Application Deployment...

- **Select the bundles which comprise this application**



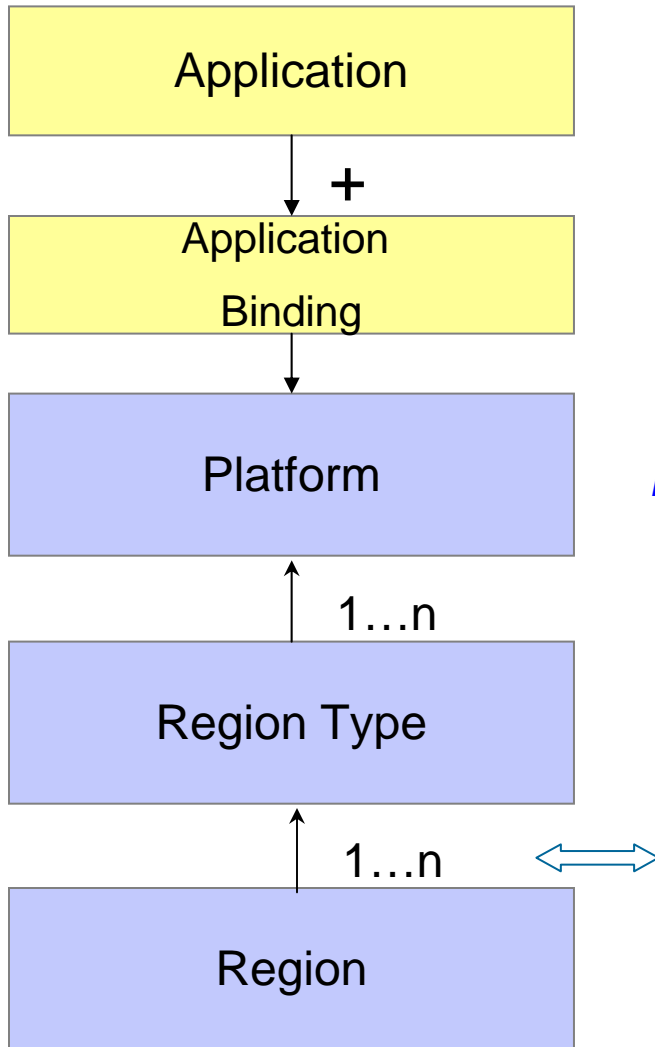


## Application Deployment...

### ▪ Application Binding Project

- Decouple applications from underlying region topology
- Ties the Application to the Platform
  - Associates bundles with region types
  - Allows the Application project to be mapped to different platforms
    - e.g. Development, Quality Assurance, Production
- Allows additional bundles to be deployed based on the platform

# Application Deployment...



Package application resources and dependencies

Bind the application to the platform. Map bundles within the application to region types. (map developers' world to the operations world)

*Platform: where applications are deployed and run*

Characterize regions in the region type  
e.g. TOR, AOR, ROR, FOR

Elastically scale regions in the region type (within specified bounds)



# Application Deployment...

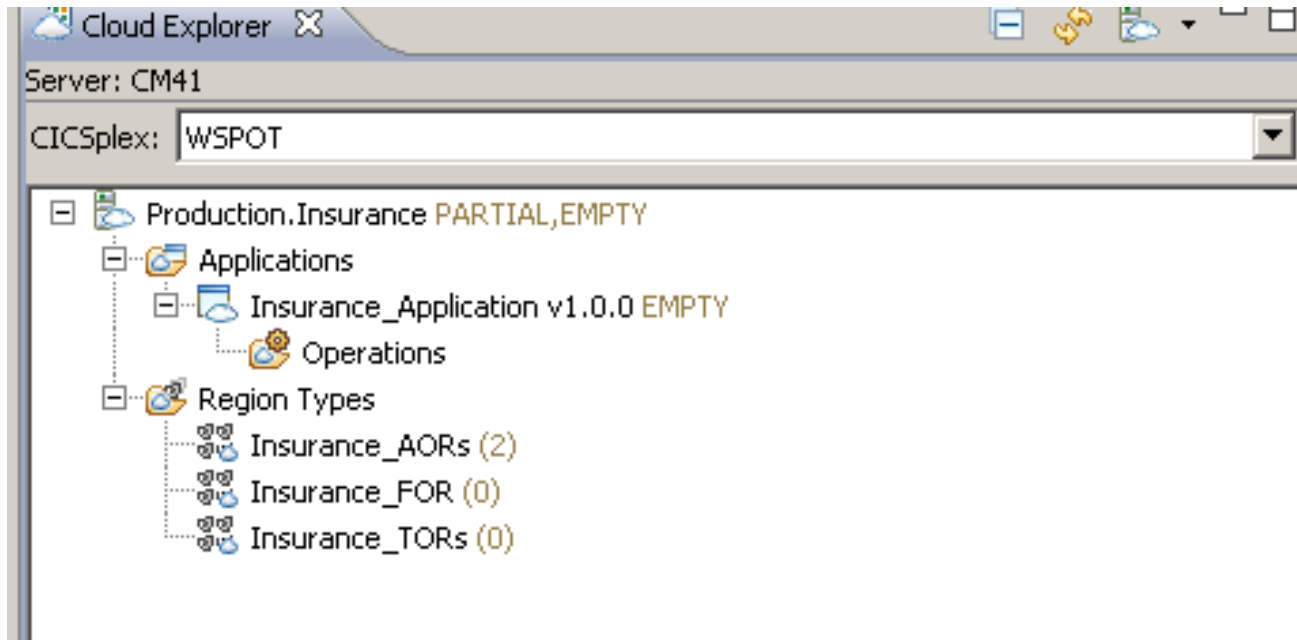
## ■ Creating the Application Binding

The image displays four overlapping dialog boxes from the Eclipse IDE, illustrating the process of creating an application binding:

- New Project:** The "Select a wizard" dialog where "CICS Application Binding Bundle Project" is selected in the wizard list.
- New Application Binding Project:** The "CICS Application Binding Bundle Project" dialog where the project name is "Insurance.Binding", the location is "C:\workspaces\cics01\Insurance.Bin", and the application and platform are set to "Insurance\_Application (1.0.0)" and "Production.Insurance" respectively.
- New Application Binding Project:** The "CICS Application Binding Bundle Project" dialog showing the selection of "Car\_Insurance\_Quote\_Bundle (1.0.0)" as the CICS bundle and "Insurance\_AORs" as the region type.
- Export Application to the home directory of a Platform:** The "Export an Application" dialog where the "zGUI" connection is selected and the "Insurance.Binding" project is chosen under the "Production.Insurance" connection.

## Application Deployment...

- View the Application and Platform





## *CICS Interdependency Analyzer for z/OS*

### What is CICS IA?

- A discovery tool that identifies resource interdependencies and affinities in your CICS systems

### Captures CICS application relationships:

- Resources used by a transaction - Programs, Files, TSQs, TDQs plus DB2, MQ, IMS, Web services, and Natural
- Identifies AG Natural and Adabas relationships
- Identifies non-threadsafe programs
- Transactions with affinities and their type / lifetime
- API changes between CICS versions / releases
- Unused resources
- Sequencing of transactions within an application

### What's its value?

- Real time documentation of CICS application systems
- Automate Threadsafe Analysis
- Identify and analyze affinities
- Assist in application modernization activities
- Quickly identify application scope
- Verify the application code via call path tracing
- Automatically maintains CPSM rules

### Why is this tool important to CICS customers?

- Reduce both time/resource required in understanding active CICS application inventory for efficient maintenance and reuse. A manual and error prone process today.

**DISCOVERY**



## Why use CICS IA ?

### Projects

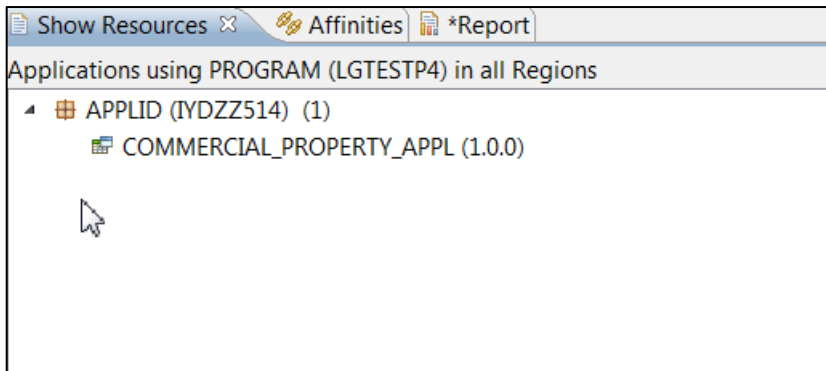
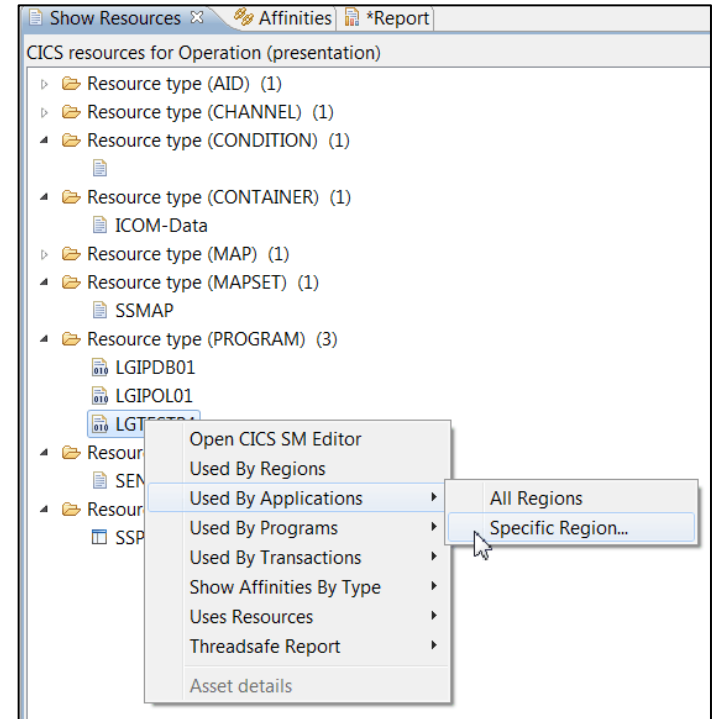
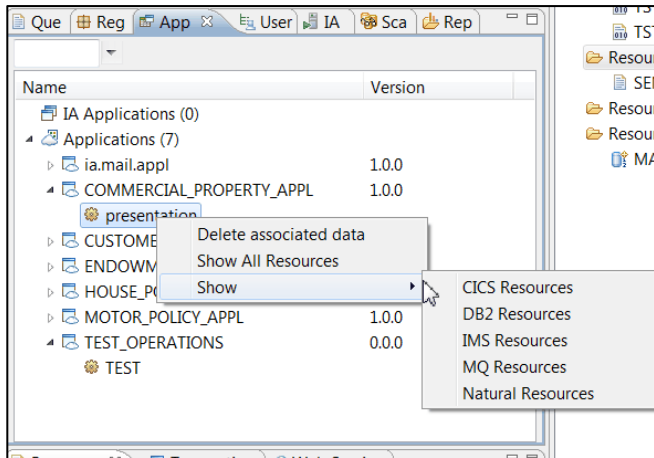
- **Workload balancing**
  - Affinity Analysis
  - Resource utilization
- **Application Modernization**
- **Web services**
  - Atom services
  - Events deployment
- **CICS TS Upgrade**
  - Understand the use of TRUEs and GLUEs
  - Understand the use of modified or deleted SPIs and APIs
  - Assist with test coverage
- **Threadsafe Analysis**

### Day to Day usage

- **Application changes**
  - Which programs uses a given resource
- **Application deployment**
  - Governance – check for Affinities , Threadsafe commands , site rules
- **Problem determination**
  - What new commands have been added to a given program using the First\_used timestamp column
- **VSAM or resource recovery**
  - Disable all programs that use this file

# CICS Interdependency Analyzer V5.1 Highlights...

Application support – collect and display data for a deployed application



New menu option – “Used by Applications”  
Can be used against any resource.

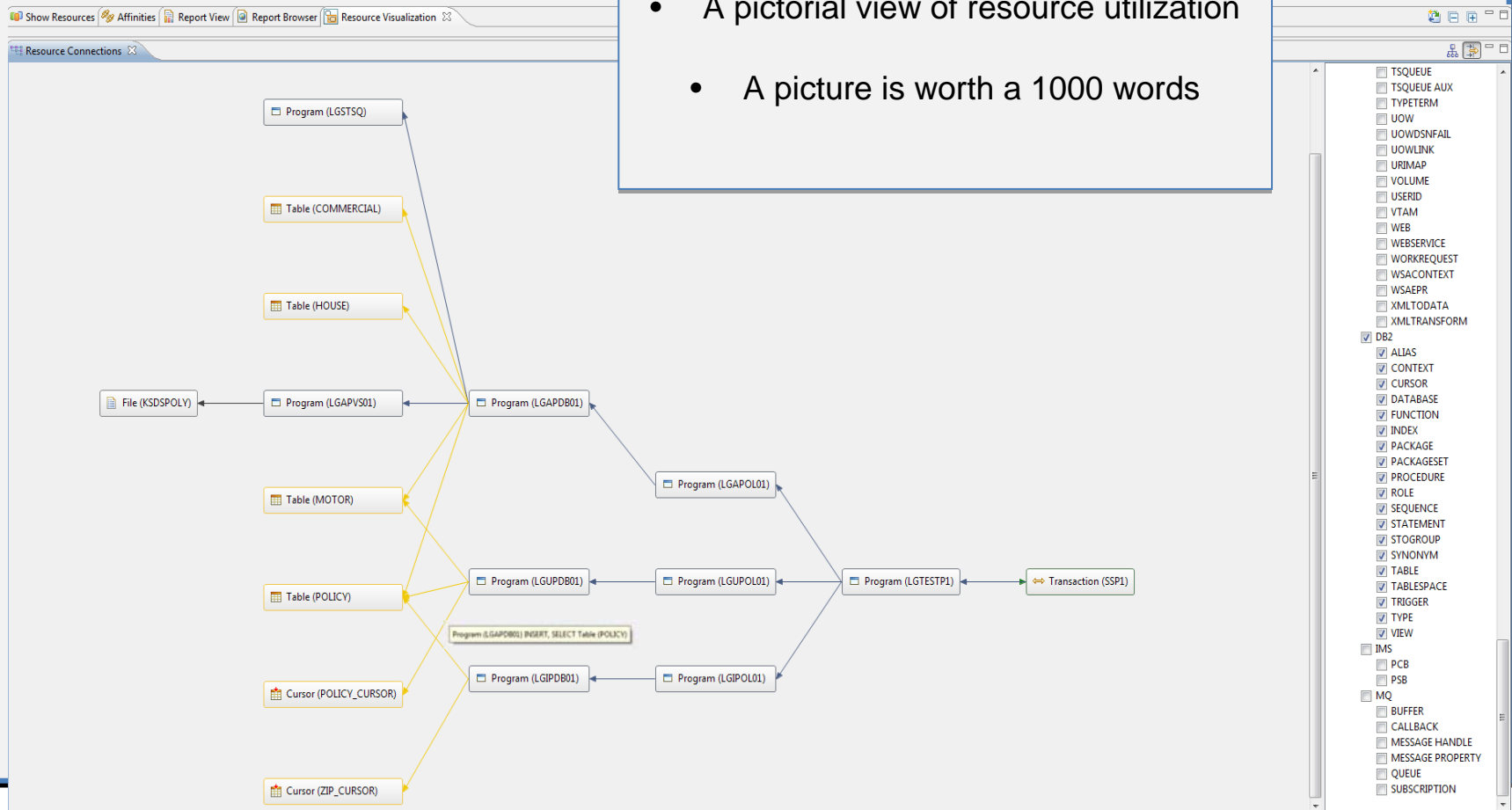


# CICS Interdependency Analyzer for z/OS V5.1

## Visualization

## Benefits

- A pictorial view of resource utilization
- A picture is worth a 1000 words





# CICS Configuration Manager for z/OS

## What is it?

- CICS Configuration Manager simplifies CICS resource-definition administration and maintenance, while at the same time offering comprehensive reporting and optional change-management control facilities.

## What's its value?

- Single point of control for managing CICS application resource definitions. Aids systems administration, lowers costs, reduces risk of downtime due to user errors and speeds version to version migration

## How does it enhance CICS management?

- Create, Update, Delete, Copy, Replicate CICS resource definitions
- Provides change management through the life-cycle stages, e.g. development, test, production
- Create customized reports to identify redundant definitions, show resource relationships and change management history
- Audit, back-out and change authorization capabilities

## Why is this tool important?

- Accurate CICS resource definitions are essential to maintain the high availability expected of CICS. With tens, or even hundreds, of CICS regions across the enterprise, each containing hundreds or thousands of artifacts, maintaining potentially millions of definitions can be challenging.
- Reduce both time/resource in gaining tighter control over CICS CSD administration
- Enhance compliance with change management policies.
- Generate audit reports to simplify effort and costs associated with compliance

**RESOURCE MANAGEMENT**

# Single point of control over Resource Definitions

## Access multiple CSDs, Data Repositories, Lists, and Groups from single interface

The screenshot displays the IBM CICS Explorer application window. The main interface is divided into several panes:

- Left Pane (Configurations):** A tree view showing various CSDs and contexts, such as CICSAOR1 through LIVCEMSR.
- Search Results Pane:** Displays a list of resources for CSDAOR6 Groups, including DB2 Connection Definition, DB2 Entry Definition, Enqueue Model Definition, File Definition, Program Definition, and Transaction Definition.
- Group List Definitions Pane:** Shows a list of groups (GENA, GENASAD, GENASAF, GENASAP, GENASAT, GENASA2) under the CSDAOR6 context.
- History Pane:** A table showing the revision history for the TEST resource.
- Properties Pane (Transaction Definition (TEST)):** Provides detailed information about the TEST transaction, including its name, description, CSD Group, creation and change dates, and various configuration options like 'Enabled' and 'Isolate user-key task-lifetime storage'.

**History Table Data:**

Revision Time	Resource Name/After	Resource Type/Before	Group	User Name	Configurat
2012/09/25 21:10:38	TEST	TRANDEF	GENASA2	DNET409	CSDAOR6
shutdown	ENABLED	DISABLED			
2012/09/25 21:10:27	TEST	TRANDEF	GENASA2	DNET409	CSDAOR6
shutdown	DISABLED	ENABLED			

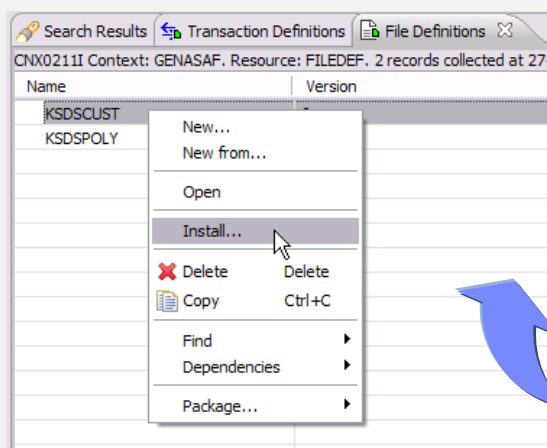
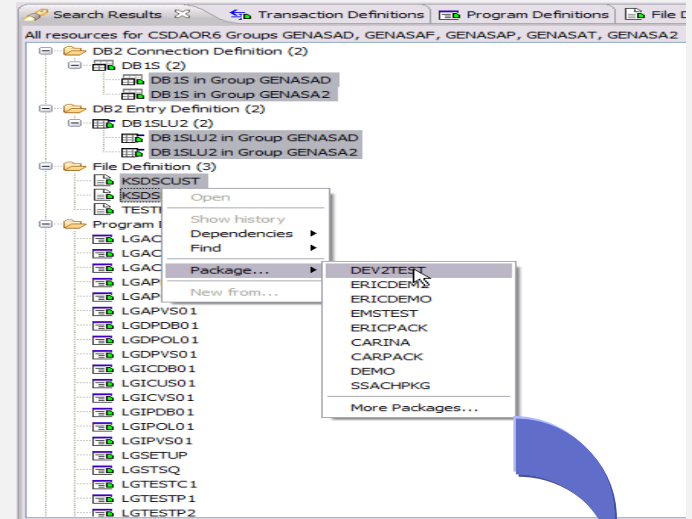


# CICS CM – CICS resource definition lifecycle management

## Benefits

- Eliminate manual and error prone processes
- Full audit trail and backout capability
- Integrate with source code change management processes

Change package created for resources in Development repository



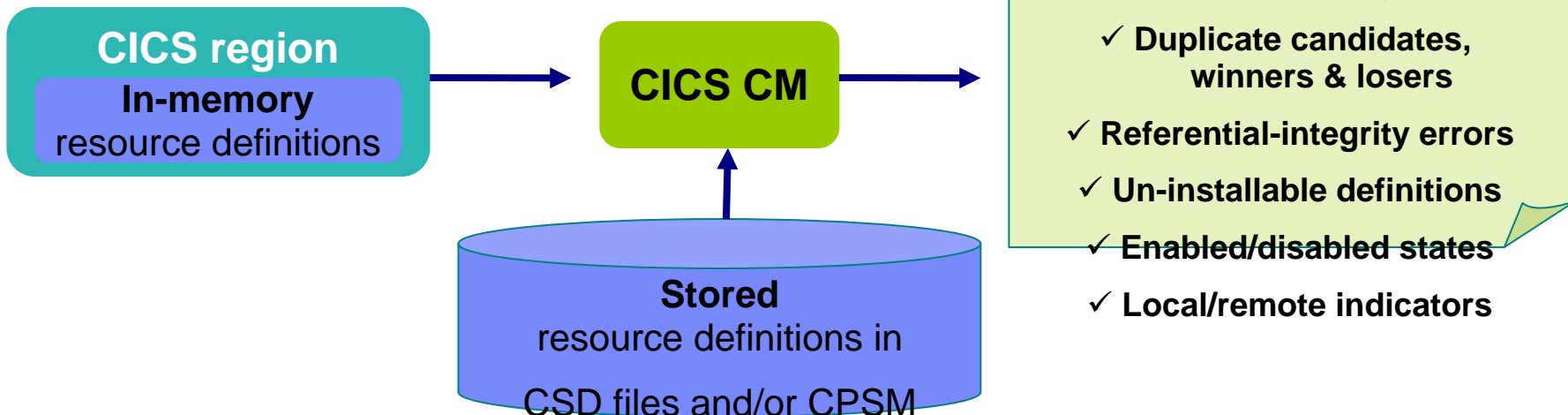
Install definitions in CICS regions on test environment

Packages	Description	Last Action	Changetime
CP1		CREATE	2012/05/21 06:49:
DEMO	Demo PKG	CREATE	2012/07/19 08:28:
DEVZTEST	Development to Test	READY	2012/09/27 05:44:
ERICDEMO	of change packaging via explorer	UNREADY	2012/09/19 08:38:
ERICDEMO	for Humana	MIGRATE	2012/09/26 13:51:
EMSTEST	package for Eric	MIGRATE	2012/09/18 10:22:
ERICPACK	Backout of GENAPP resource	READY	2012/04/29 12:40:
CARINA	SFCPKG1 Package for SFC app	MIGRATE	2012/05/02 17:52:
CARPACK	SSACHPKG Change package for WMQ definitions	MIGRATE	2012/07/11 03:44:
DEMO	00000001 Migrate resources from CICS TS 3.2 to 4.1	READY	2012/04/18 05:31:
SSACHPKG	00000002 Migrate from AOR6 to AOR7	MIGRATE	2012/02/13 08:24:
DEVZTEST	00000003 Migrate from CSD to CPSM BAS	BACKOUT	2012/05/30 03:55:

Change package migrated to test environment

## CICS CM: Deployment analysis

- ✓ Immediate analysis – no need to stop/start CICS regions
- ✓ Supports CSD, CPSM, or CSD/CPSM hybrid models
- ✓ Understands ‘order-sequence’ processing and RASGNDEF overrides
- ✓ Provides filtering for auto-install, dynamic resources, known conditions
- ✓ Reports ...

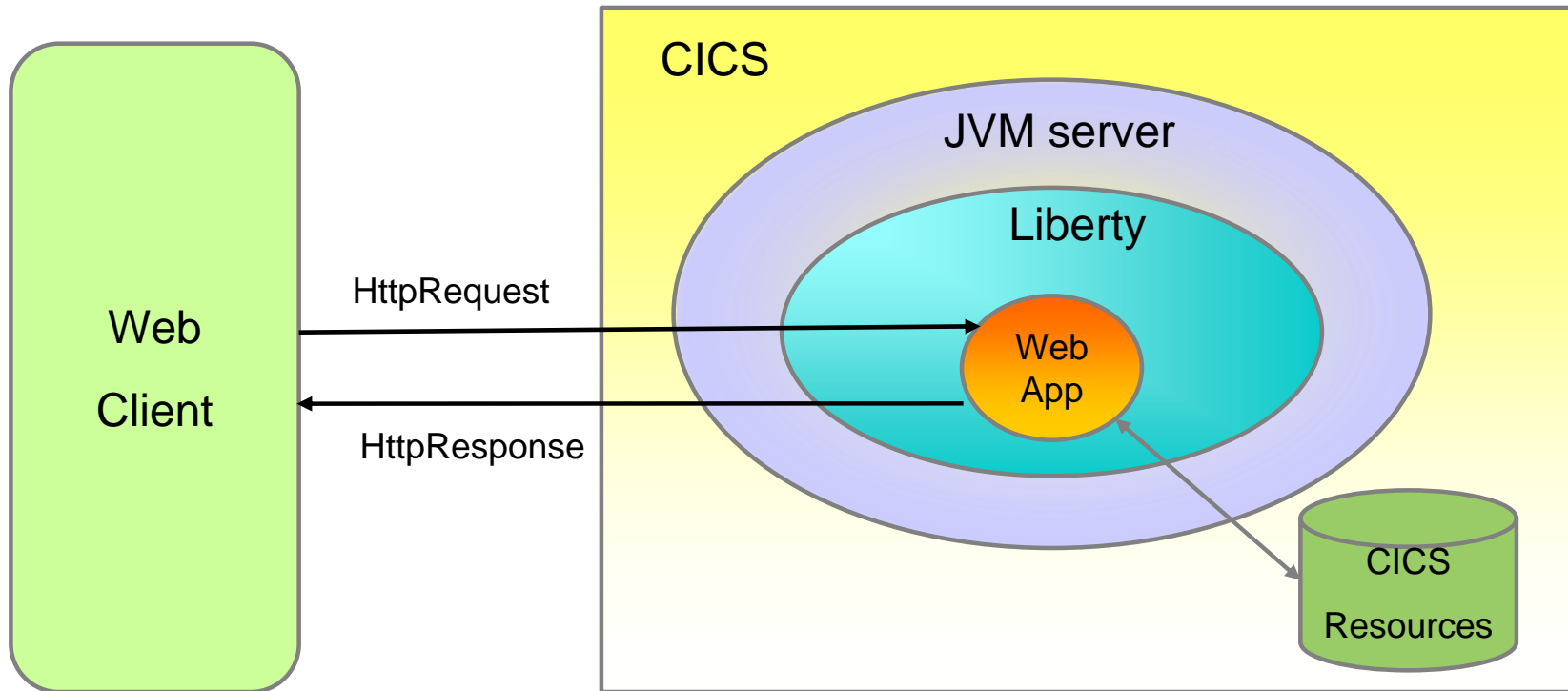




## Liberty Profile Web Container

- **New Java web container is built on WebSphere Application Server Liberty profile technology:**
  - Liberty is a lightweight, composable, ‘profile’ of WebSphere Application Server
    - Provides a fast and lightweight Java web container
  - Provides “off the shelf” Web-server capabilities (JSPs and Servlets)
  - Provides potential to re-use even more WebSphere technology in CICS.
  - JSP and Web servlets have direct, local, access to CICS data and resources.
  - Servlets can take advantage of existing CICS OSGi applications to provide a Dynamic Web front end.

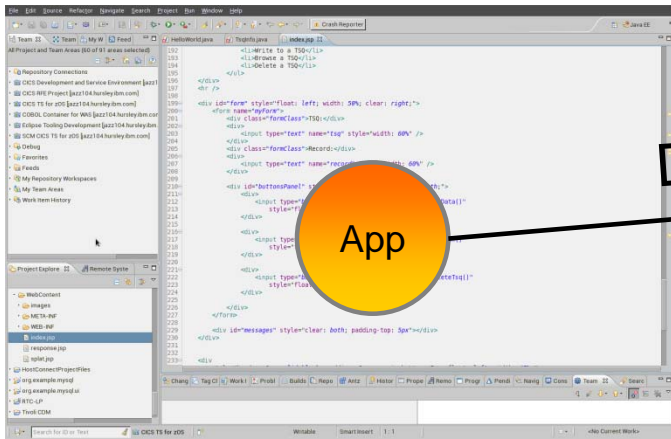
## Liberty Profile Web Container...



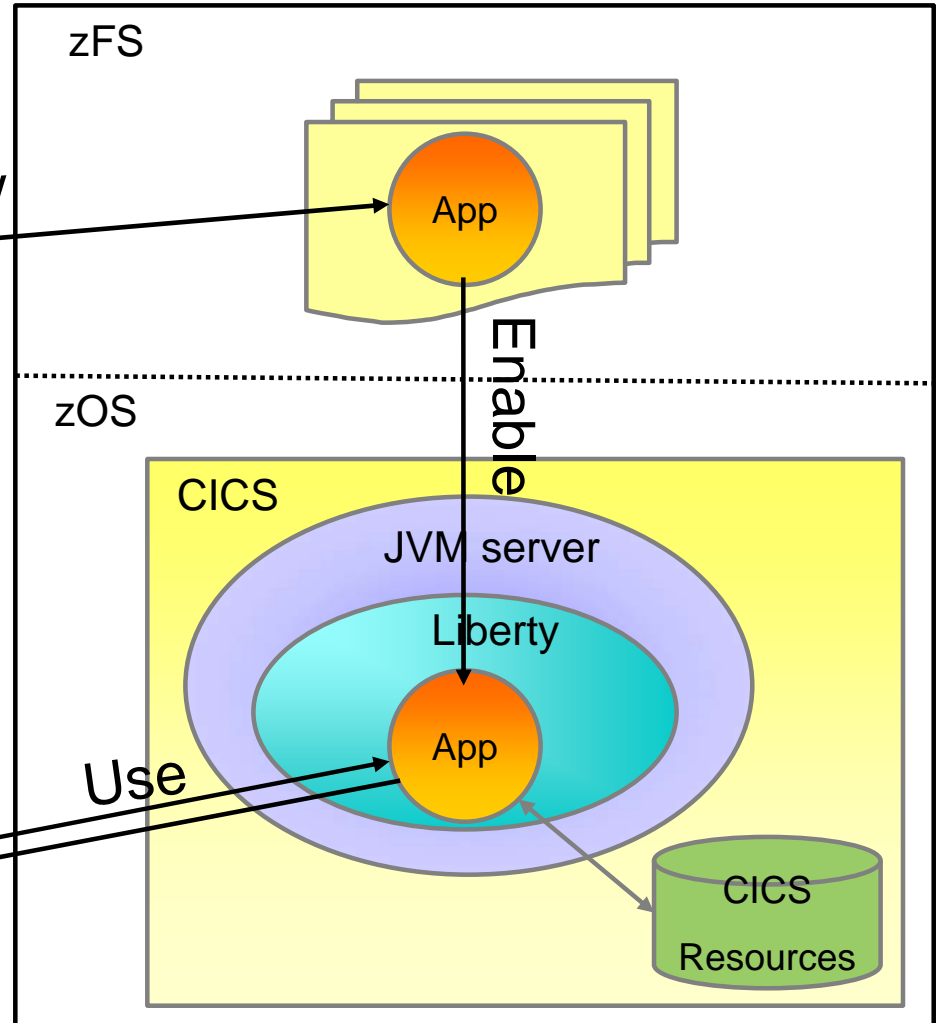
- Liberty Profile runs in a JVMSERVER
- Use sample JVMSERVER profile DFHWLP
- Web App developed and deployed using Eclipse IDE & CICS Explorer SDK

# Liberty Profile Web Container - Putting it all together

Work with CICS Explorer SDK & Liberty Tools



Deploy





## Summary

- **What is an Application?**
- **How do we package an application?**
  - Bundles
    - Definitions
    - Dependencies
    - Context
  - Application Project
- **How do we deploy an application to different platforms?**
  - Bindings
  - Application definitions
  - Cloud Explorer
- **How do we modernize our applications?**
  - Liberty Web Container

An abstract graphic in the top left corner composed of several 3D rectangular blocks in shades of red, pink, orange, and black, arranged in a cluster.

# CICS Resources

## Find out more

Register for Impact 2013 today

-30 CICS related sessions

- 2 Labs

-Meet CICS Technical specialists

-Hear about the latest CICS V5.1 Portfolio release

<http://www-01.ibm.com/software/websphere/events/impact/registration.html>

### CICS Smart Seminars

Arrange a customized CICS agenda at your location and hear about the CICS topics you want to hear about. Contact your local IBM representative or send an

Email to [cicssem@uk.ibm.com](mailto:cicssem@uk.ibm.com) or Fred Marschner [marschne@us.ibm.com](mailto:marschne@us.ibm.com)





# CICS Developer Trial

## CICS Developer Trial V5.1

Operational Efficiency and Service Agility with Cloud Enablement



- Available from Jan 11<sup>th</sup> 2013
- No charge trial, fixed expiry date
  - Does not start SVC period
- For non-production environments
- Available through IBM ShopzSeries
  - **PID 5655-CIC**

Based on CICS TS V5.1

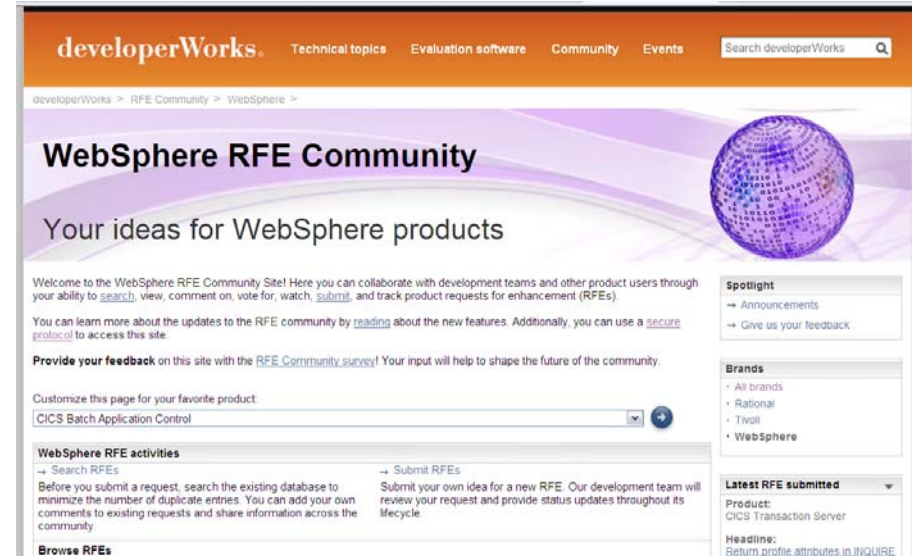
- (with restrictions)

- Performance
- Capacity
- License

<https://www.ibm.com/developerworks/connect/cicsdev>

# Raising new requirements with RFE

- You can now raise and track requirements using the new IBM RFE system for
  - CICS Transaction Server
    - CICS Explorer
    - TXSeries
    - WXTR
  - IBM CICS Tools
  - CICS Transaction Gateway
  - PD Tools - coming soon (target end Jan 2012)



- All previous FITS requirements have been processed, and either be transferred to RFE or closed and returned
- All brands <https://www.ibm.com/developerworks/rfe/> - select Brand: WebSphere
- WebSphere only [https://www.ibm.com/developerworks/rfe/?BRAND\\_ID=181](https://www.ibm.com/developerworks/rfe/?BRAND_ID=181)
- Select Product Family: Transaction Processing - for CICS Transaction Server, TXSeries, and WXTR
- Select Product Family: Enterprise Tooling - for the CICS Tools, CICS Transaction Gateway, and PD Tools
- Raise CICS Explorer base requirements against the Explorer component of CICS TS.
- Raise plug-in requirements against the Explorer component of related product.

# Google us or check us out at:



[ibm/developerwo](#)

[facebook.com/l](#)

[twitter.com/IBM](#)

[youtube.com/c](#)

[youtube.com/cic](#)



[twitter.com/IBM\\_](#)



CICS Explorer Forum

[ibm.com/developerworks/forums/forum.jspa?forumID=1475&start=0](http://ibm.com/developerworks/forums/forum.jspa?forumID=1475&start=0)

CICS-L list Forum

[listserv.uga.edu/archives/cics-l.html](http://listserv.uga.edu/archives/cics-l.html)



# Key documents

## ▪ Analyst papers

- Lustratus Research - New project platform section for CICS Users  
[ftp://public.dhe.ibm.com/software/htp/cics/pdf/Lustratus\\_Research\\_Paper\\_New\\_project\\_platform\\_selection\\_for\\_CICS\\_users.pdf](ftp://public.dhe.ibm.com/software/htp/cics/pdf/Lustratus_Research_Paper_New_project_platform_selection_for_CICS_users.pdf)
- Branham Group: IBM CICS Tools: Unrealized Productivity Gains and True Cost Savings  
[ftp://public.dhe.ibm.com/software/htp/cics/tools/IBM\\_CICS\\_Tools\\_Whitepaper\\_2009.pdf](ftp://public.dhe.ibm.com/software/htp/cics/tools/IBM_CICS_Tools_Whitepaper_2009.pdf)
- Software Strategies: IBM z/OS Problem Determination Tool Suite Leads Again  
[https://www14.software.ibm.com/webapp/iwm/web/preLogin.do?lang=en\\_US&source=swg-rszswg](https://www14.software.ibm.com/webapp/iwm/web/preLogin.do?lang=en_US&source=swg-rszswg)

## ▪ IBM Redbooks

- [CICS Transaction Server from Start to Finish](#), SG24-7952-00
- [Smarter Banking with CICS Transaction Server](#), SG24-7815-00
- [Implementing Event Processing with CICS](#), SG24-7792
- [CICS and SOA: Architecture and Integration](#), SG24-5466-06
- [Implementation of Popular Business Solutions with CICS Tools](#), REDP-4824-00
- [Threadsafe considerations for CICS](#), SG24-6351-04
- [Architects guide to CICS on System z](#), SG24-8067-00
- [CICS Transaction Server Application Architecture](#), Redbooks solution guide



## Next Session

# CICS V5 Scalability and Performance

- **Scalability**
- **Performance**
- **Policies**
- **Scalability Tooling**
- **Connectivity**
- **Summary**