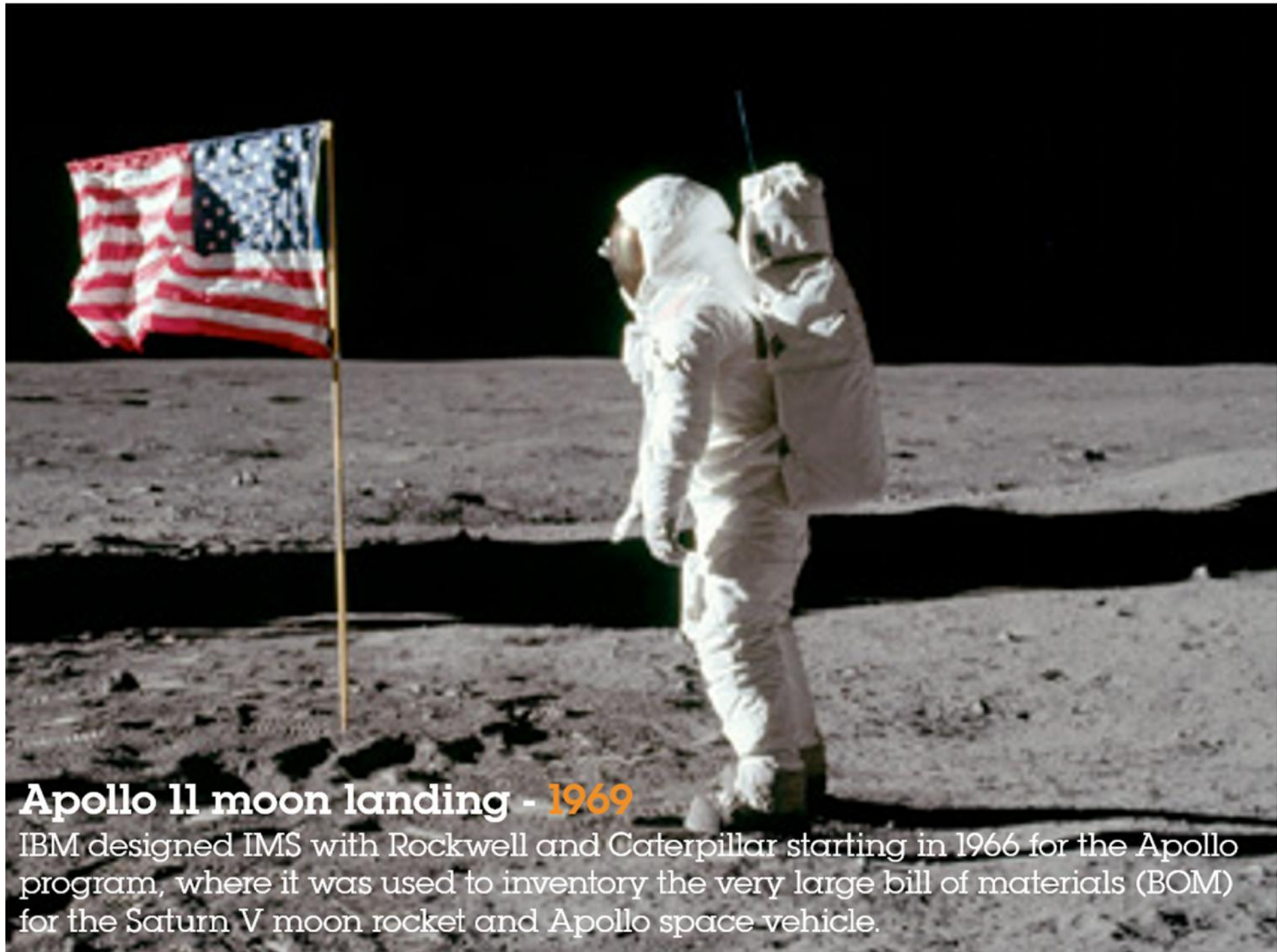


Optimize and Innovate with IMS

Kyle Charlet
Distinguished Engineer
IMS Architect: Cloud, mobile, analytics

Nick R Griffin
Product Manager
IMS Tools





Apollo 11 moon landing - 1969

IBM designed IMS with Rockwell and Caterpillar starting in 1966 for the Apollo program, where it was used to inventory the very large bill of materials (BOM) for the Saturn V moon rocket and Apollo space vehicle.



First National Bank, South Africa - 2014

Providing upward mobility for Africa through critical mobile financial services to Africa's unbanked 80 percent, relying on the mainframe and IMS for performance, scalability and reliability.

There are three important shifts fundamentally changing IT

Data



Data is becoming the world's new natural resource

Cloud



The emergence of cloud is transforming IT and business processes into digital services

Engagement



Social. Mobile. Security. Empowering people with knowledge, enriching them through networks and changing expectations.

Business and industries are being transformed by these shifts

72%

say greatest value will come from analyzing transactional data

Systems of Record



91%

say new customer client-facing apps will access the Mainframe

Systems of Engagement

12%

amount of data being analyzed in the enterprise



55%

of enterprise applications need mainframe to complete transactions

Systems of Insight

Cloud

70%

of enterprises to pursue hybrid cloud by 2015

IMS Product Strategy is aligned with these shifts

Strategic Intent

Investment



- Continue to deliver the IMS Value Proposition
 - Superior performance, reliability, availability and serviceability
 - Minimize cost per transaction



- Innovate and extend the value of your IMS investment



- Expand and empower the IMS talent population



- Core Capabilities
 - Reduce path length, contention, I/O...
 - Reduce planned outages
 - More dynamic capabilities
- Data & Analytics
 - Accelerate time to insight
- Cloud/Mobile
 - Rapidly enable/control cloud & mobile access to IMS resources
- Open interfaces & Java
- Modern tooling for administrators, developers and DBAs

Leaders are optimizing & innovating with IMS...

Systems Management



Performance

TCO

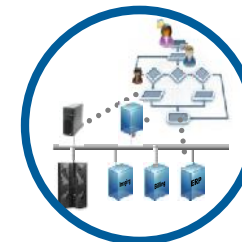
Database Management

Scalability

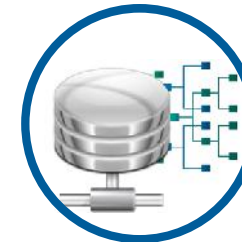
Tx Management

IMS Tools

- Complete Database Management
- Optimize IMS Performance
- Accelerate IMS upgrades



SOA and Open Integration



Open Database



Mobile Access



Business Analytics

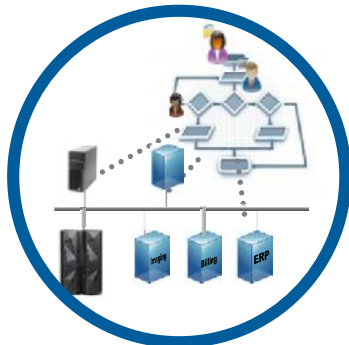


Application Modernization

Optimize

Innovate

Delivering value to their businesses



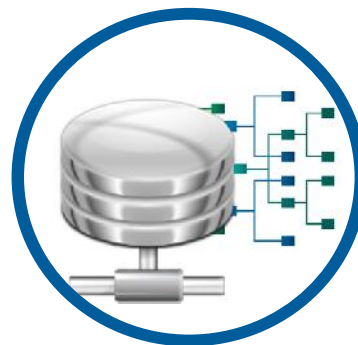
SOA and Open Integration

Who: A large South African bank

What Business Need: business pressure due to expansion, regulation and consumer demand requires speed and agility

Solution: enable IMS applications to call, in-line, to an enterprise decision management solution

Benefits Delivered: quickly respond to changing business needs



Open Database

Who: A large insurance client

What Business Need: Easier Access to IMS Data

Solution: IMS Open Database infrastructure

Benefits Delivered: Easy access to IMS data using SQL from any platform
Helps to drive open standards and open technology into IMS



Application Modernization

Who: IT Service Provider for banks

What Business Need: Evolve their core banking processes

Solution: Promoted the use of Java on z/OS, especially Java and COBOL interoperability hosted by IMS

Benefits Delivered: Skills, rapid development, reduced application logic & complexity

Optimize and Innovate with IMS

2014 Key Deliveries

- IMS TM VUE** - Enables clients to expand new workloads in IMS through an alternative pricing option
- IMS Mobile Feature Pack** - Easily extend IMS reach to cloud and mobile – 20+ clients in/starting POC
- IMS IDAA POT** - Accelerate analysis of IMS Data with IDAA

IMS 14 – QPP began January 2015

Optimize and extend the value of your IMS investment in the era of Data, Cloud & Engagement

- Simplified, standards-based management and integration for hybrid cloud, analytics, mobile, and big data
- Improved IMS TCO and Qualities of Service

“With **IMS** as our core orchestration and business logic execution layer, we have **true 24/7 service capability** and the ability to manage growth without worrying about scalability.”



- Jay Prag, CIO Hogan Channels, FNB

IMS processes the world's transactions

117,292
TRANSACTIONS PER SECOND
POWERED BY THE OPTIMIZED
IBM IMS 14 QPP

50,000,000,000
secure transactions per day

IBM IMS: The world depends on it

Many of the largest corporations in the world rely on IBM Information Management System (IMS) to run their business. Which, when you stop to consider it, is really your business.

Announcing the z13

Mainframes account for **68%** of production workloads, but only **6%** of IT spend

- Mobile Test Drive
- IBM Mobile Center
- Enterprise Real-time Analytics
- US Mobile ISV
- Enterprise Commerce
- Urban Code 6.1
- CICS TS v5.3 Open Edition
- Rational Test Workbench
- Mobile Application Throughput
- BPM and Monitor v8.5.6 for z
- on z Systems
- IBM Integration Bus v10
- IBM zSecure Audit Reporting SSE
- Java 8

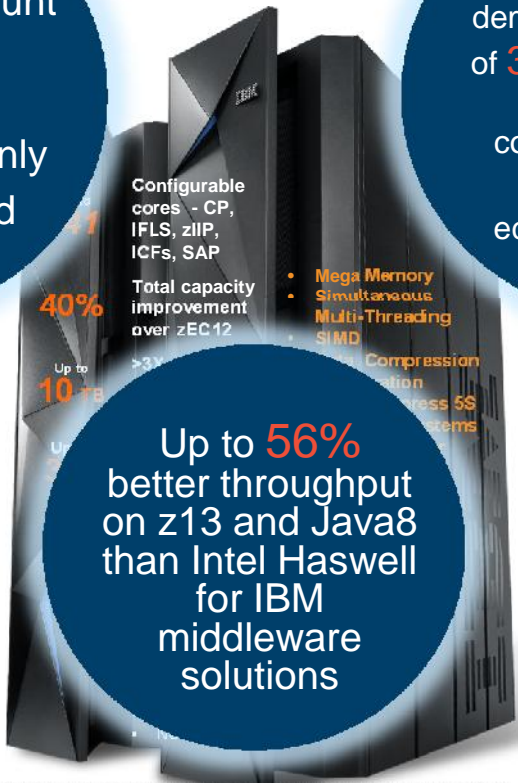
Mainframe organizations demonstrate an average of **35%** lower IT Cost of Goods; and computational growth roughly **3x** more economically efficient

- Cloud Manager w Openstack v4.2
- Optimized WebUI for z Systems*
- Hybrid cloud connect test drive

Up to **56%** better throughput on z13 and Java8 than Intel Haswell for IBM middleware solutions

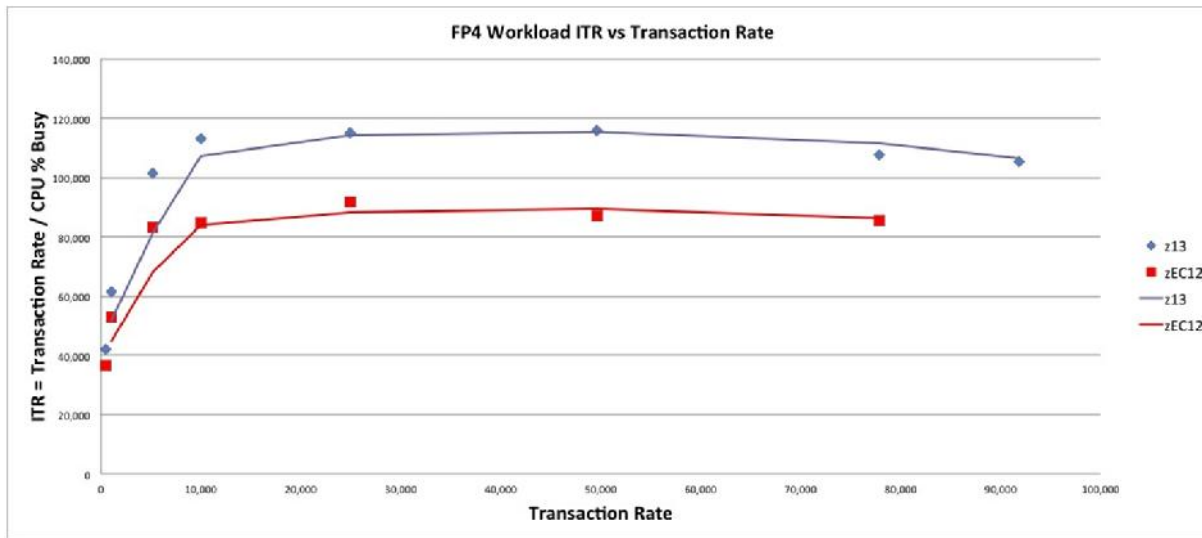
- Analytics**
- IBM DB2 Analytics Accelerator
 - CPLEX Optimizer for z/OS
 - IBM DB2 BLU for Linux on z Systems
 - IBM InfoSphere System z Connector for Hadoop
 - IBM SmartCloud Analytics + Log Analysis z/OS Insight Packs

- Skills**
- Master the Mainframe Country Contests
 - Master the Mainframe World Championship in 2016
 - New Jobs Board/Connector
 - MOOCs available on line, all the time



* SOD. Node.js and the Node.js logo are registered trademarks of Joyent, Inc. IBM's applications are not clear, authorized, sponsored or otherwise approved by Joyent, Inc. or the Node.js open source project.
 • A 15-34% improvement in ITR was observed when comparing an IBM internal high volume IMS Fast Path workload running on a zEC12 vs z13 both configured with 9 general purpose engines

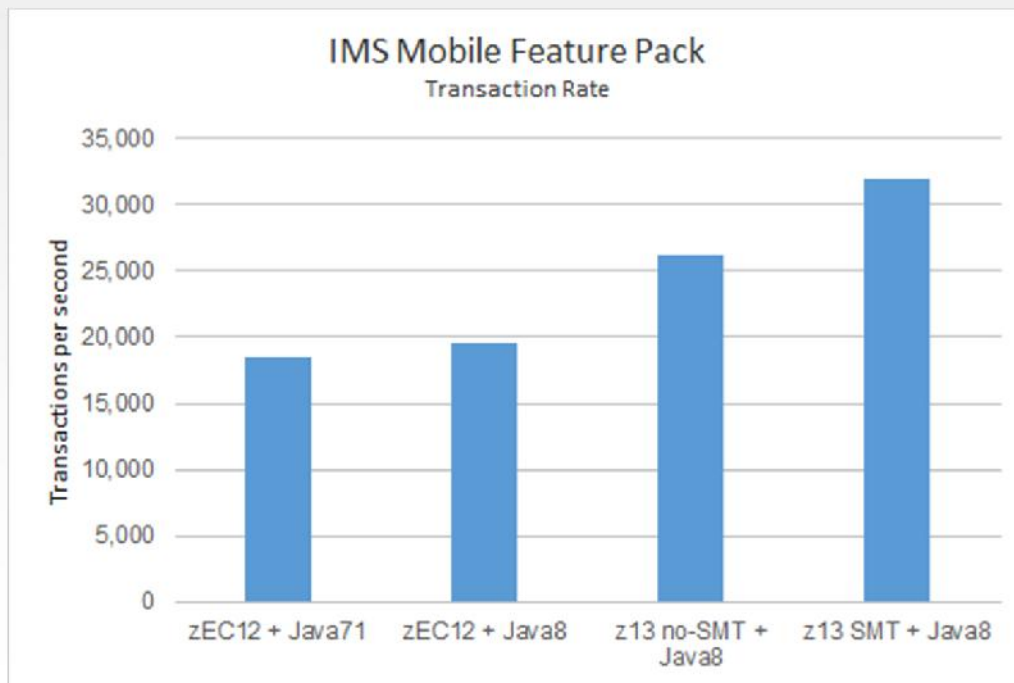
IMS 13 Fast Path Performance on z13



Up to 25% throughput improvement on z13
 over IMS 13 on equivalent EC12 using an IBM internal high volume fast path workload

• A 25% improvement in ITR was observed when comparing an IBM internal high volume IMS Fast Path workload running on a zEC12 vs z13 both configured with 9 general purpose engines

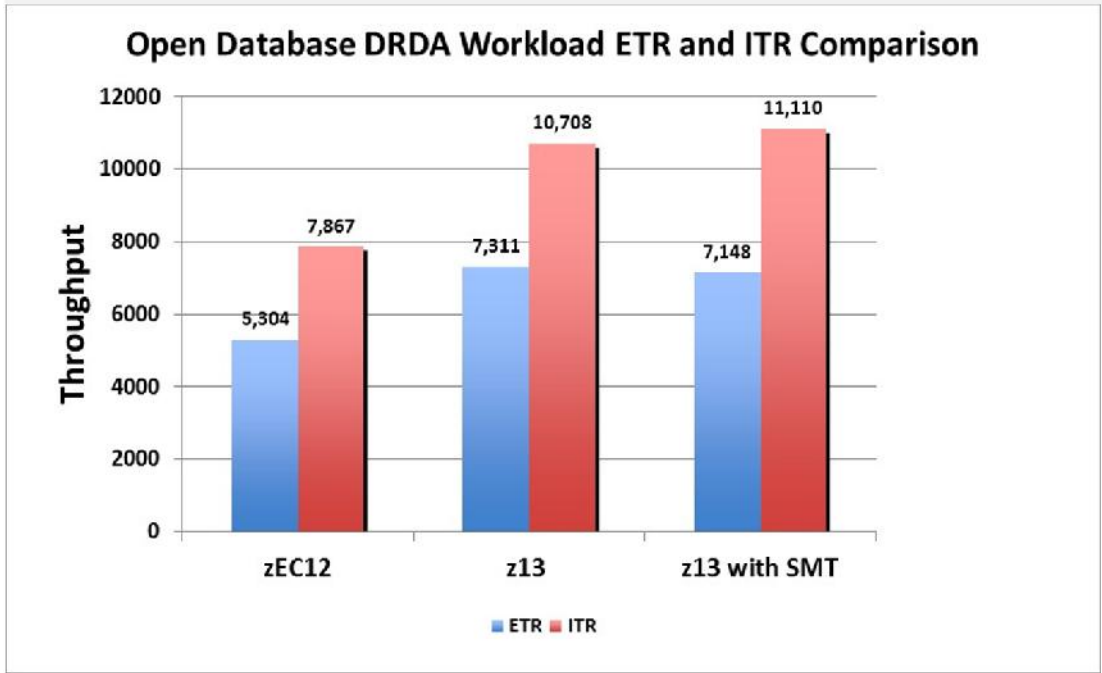
IMS Mobile Feature Pack



73% increase
in throughput using
z13 and IBM Java8

Open Database distributed JDBC

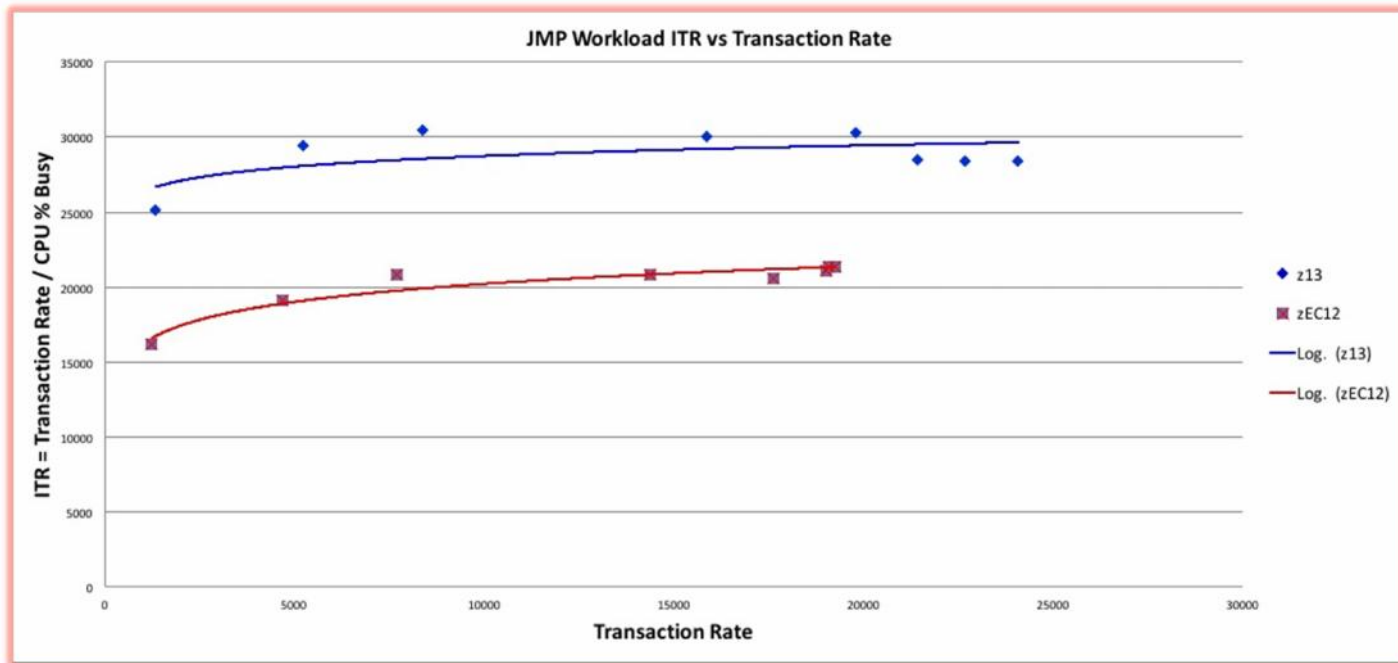
29% increase in throughput using distributed JDBC at equivalent CPU in z13 as compared to zEC12



Open Database local JDBC (IMS hosted apps)



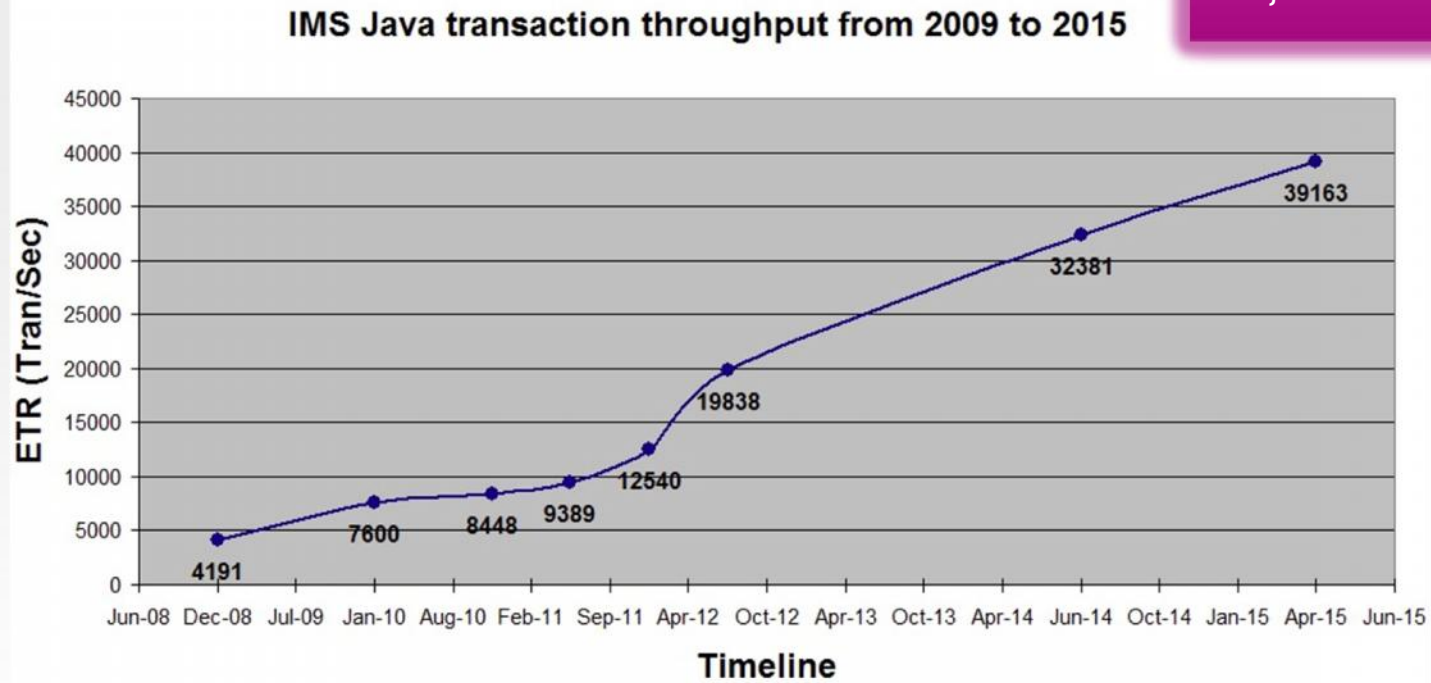
38% increase in throughput at equivalent CPU in z13 as compared to zEC12



IMS 13, when running the IMS Java transaction processing workload on IBM z13, showed as much as a 38% increase in throughput at equivalent CPU as compared to zEC12

Open Database local JDBC (IMS hosted apps)

39,163 TPS in z13!



Over 9.3x aggregate throughput improvement from 2009 to 2015 due to the following enhancements

- Java version to version performance improvements
- IMS improvements
- Hardware improvements
- DASD improvements



IMS Data and Analytics

z Systems and IBM DB2 Analytics Accelerator



DB2 Analytics Accelerator and DB2 for z/OS

A self-managing, hybrid workload-optimized database management system that runs each query workload in the most efficient way, so that each query is executed in its optimal environment for greatest performance and cost efficiency

IDAA Use Cases with IMS Data



Make better decisions faster

Large volume reporting of combined IMS and DB2 assets



Better understand your customers

Leverage full breadth of transactional data for analytics



Trust your data

Ensure consistency of data relationships between IMS and DB2

IBM Software Group
Technical White Paper
August 2014

Accelerate business insights with IMS transactional data

Introduction
IBM System z® servers are home to 90 percent of the world's data, a large part of which is Information Management System (IMS) transactional data. IMS applications and data continue to form the core of the world's critical online transaction processing (OLTP) workloads. IMS data on System z servers is widely varied in the single varieties of the truth, from which data access and warehouse are populated.

The System z platform offers high availability, scalability, security and performance for OLTP workloads. The data that resides on the System z platform is a natural fit for analysis on the System z platform for those same qualities of service. Bringing analytics directly to the data, rather than moving data to the analytics, makes sense. It preserves those qualities of service to ensure timely, accurate, and secure insight, and reduces costs of moving data off the platform.

The insights that analytics provide must be delivered efficiently across an organization, with high quality and proper governance. Working data off

YouTube

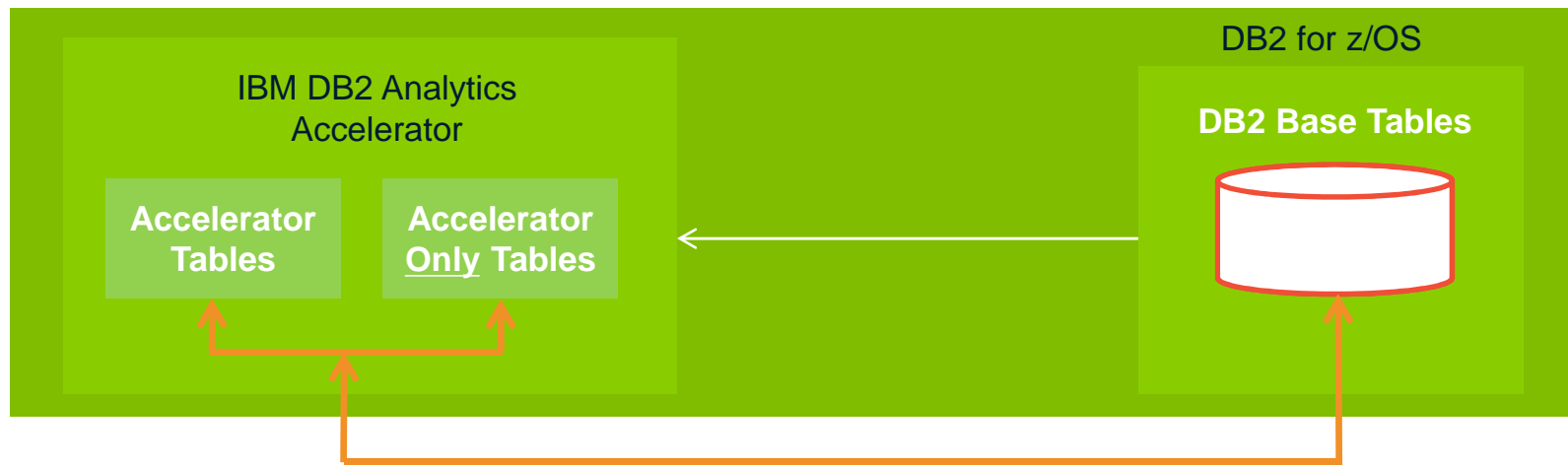
IBM

Table	Columns	Rows	Size	Index	Access	Owner	Created	Modified
TABLE 1
TABLE 2
TABLE 3
TABLE 4
TABLE 5
TABLE 6
TABLE 7
TABLE 8
TABLE 9
TABLE 10
TABLE 11
TABLE 12
TABLE 13
TABLE 14
TABLE 15
TABLE 16
TABLE 17
TABLE 18
TABLE 19
TABLE 20
TABLE 21
TABLE 22
TABLE 23
TABLE 24
TABLE 25
TABLE 26
TABLE 27
TABLE 28
TABLE 29
TABLE 30
TABLE 31
TABLE 32
TABLE 33
TABLE 34
TABLE 35
TABLE 36
TABLE 37
TABLE 38
TABLE 39
TABLE 40
TABLE 41
TABLE 42
TABLE 43
TABLE 44
TABLE 45
TABLE 46
TABLE 47
TABLE 48
TABLE 49
TABLE 50
TABLE 51
TABLE 52
TABLE 53
TABLE 54
TABLE 55
TABLE 56
TABLE 57
TABLE 58
TABLE 59
TABLE 60
TABLE 61
TABLE 62
TABLE 63
TABLE 64
TABLE 65
TABLE 66
TABLE 67
TABLE 68
TABLE 69
TABLE 70
TABLE 71
TABLE 72
TABLE 73
TABLE 74
TABLE 75
TABLE 76
TABLE 77
TABLE 78
TABLE 79
TABLE 80
TABLE 81
TABLE 82
TABLE 83
TABLE 84
TABLE 85
TABLE 86
TABLE 87
TABLE 88
TABLE 89
TABLE 90
TABLE 91
TABLE 92
TABLE 93
TABLE 94
TABLE 95
TABLE 96
TABLE 97
TABLE 98
TABLE 99
TABLE 100

Resources:

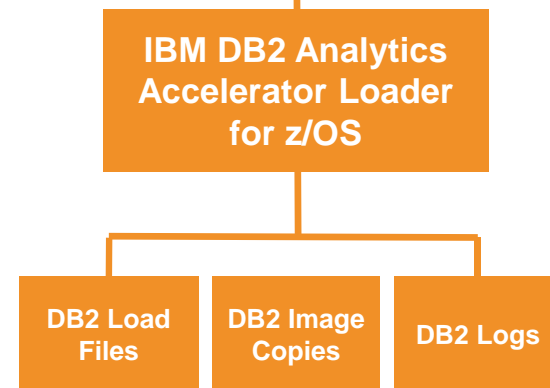
Implementation “cookbook”
http://bit.ly/IMS_Analytics_Cookbook
 with links to a related article, white paper, and recorded demo

IBM DB2 Analytics Accelerate for z/OS

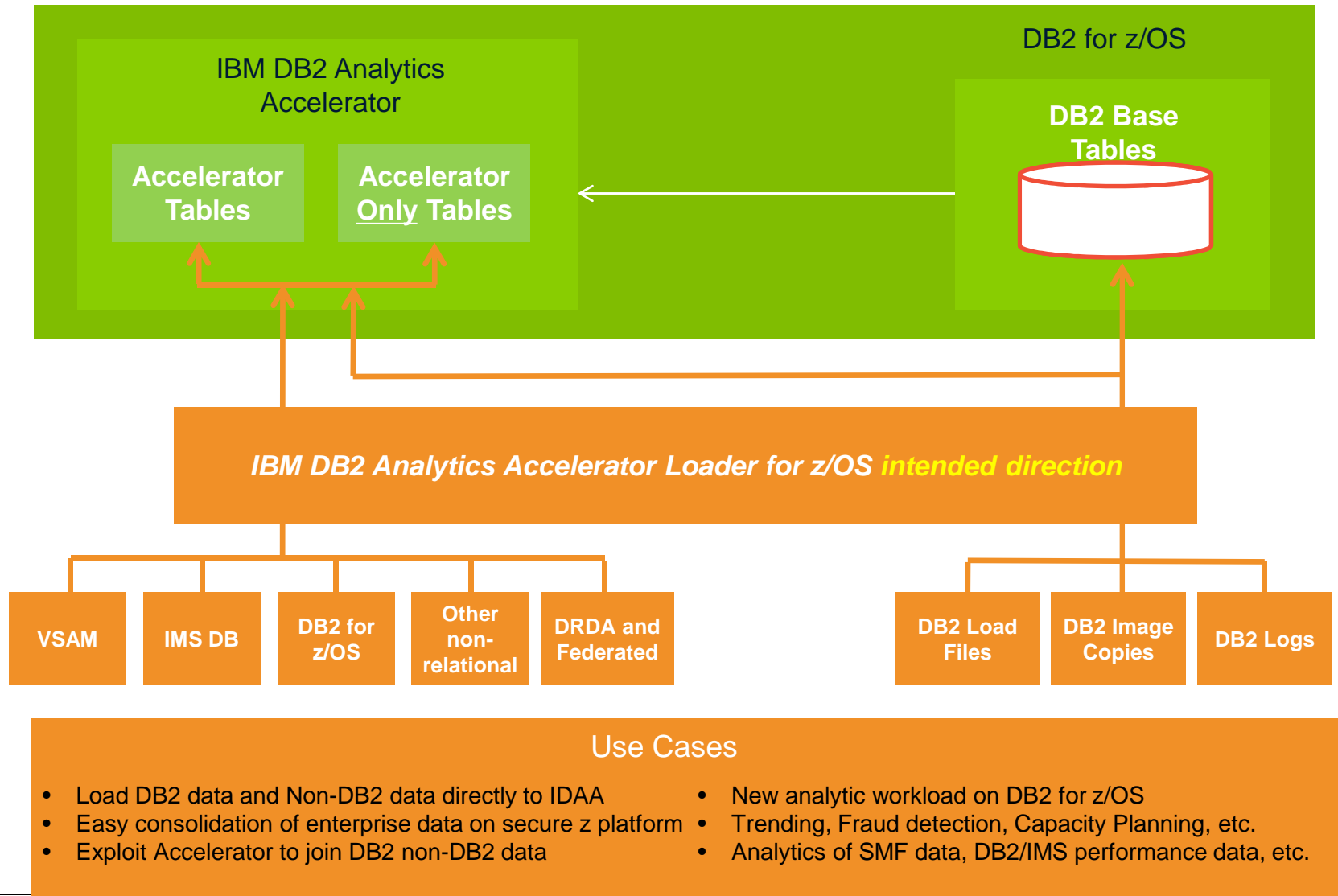


Use Cases

- Loads DB2 data to IDAA
 - DB2 Image Copies, DB2 Logs, and DB2 Load Files
 - Customer responsible for building DB2 Load Files
- Consolidate DB2 data from many systems to a single IDAA (or DB2)
- Load a related set of DB2 data to IDAA with no affect to production data
- Easily load DB2 Image Copy data across systems
- Historical loading of DB2 data for month-end, year-end analysis



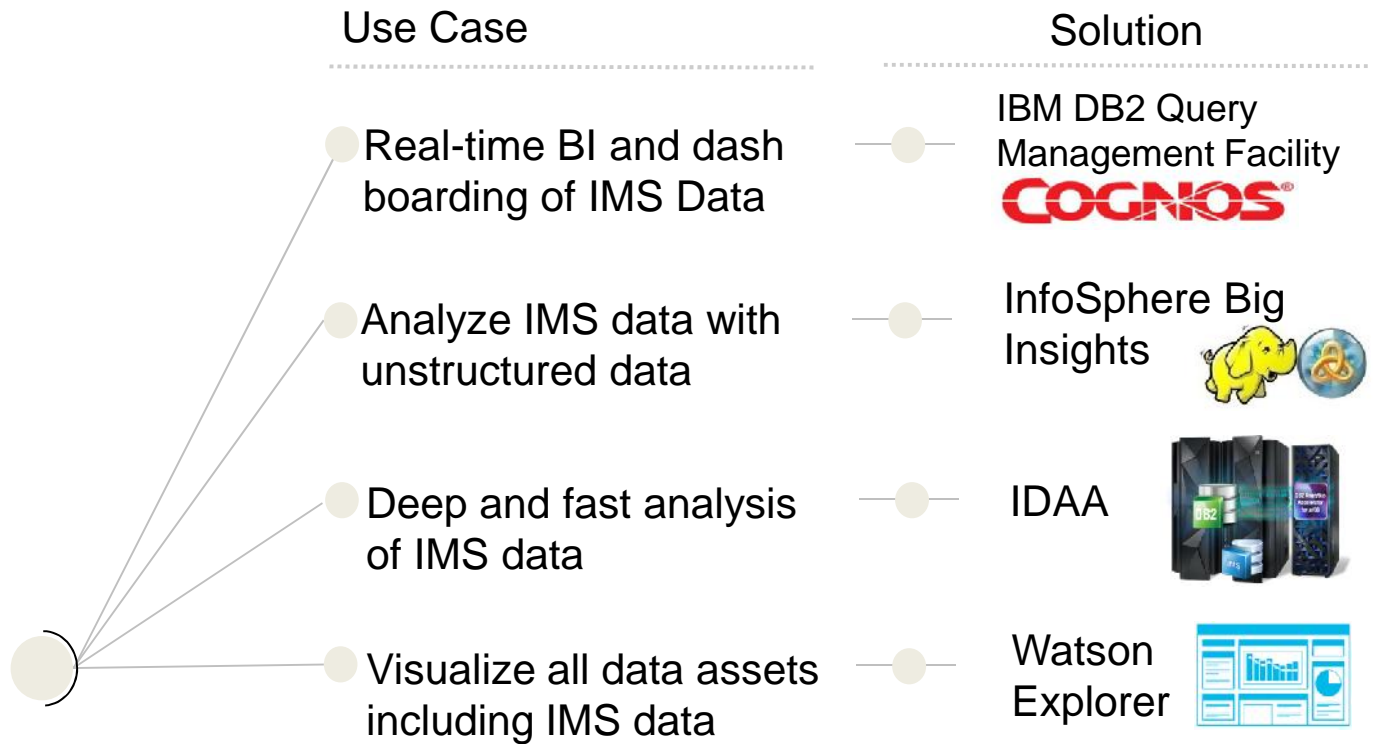
Intended direction



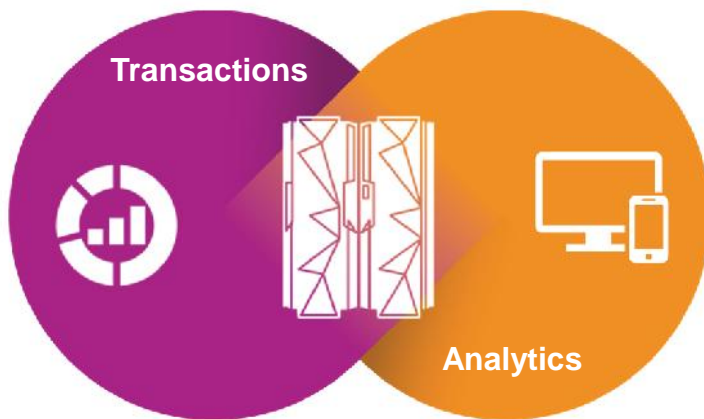
Use Cases

- Load DB2 data and Non-DB2 data directly to IDAA
- Easy consolidation of enterprise data on secure z platform
- Exploit Accelerator to join DB2 non-DB2 data
- New analytic workload on DB2 for z/OS
- Trending, Fraud detection, Capacity Planning, etc.
- Analytics of SMF data, DB2/IMS performance data, etc.

IMS supports a range of analytics solutions today



...and we'll continue to integrate analytics with core transactions



- Right-time insight at point of impact
- Increased business agility
- Improved data governance and security
- Reduced infrastructure cost and complexity

72%

greatest value will come from analyzing transactional data

55%

of enterprise applications need mainframe to complete transactions



IMS Cloud and Mobile

Cloud and Mobile enables innovation that creates new business opportunities

Apps Everywhere

With more mobiles than humans and ¼ of the world on social networks, apps drive more successful business outcomes.



Experience Matters

Always-connected, socially-networked customers expect a delightful, seamless, and personalized experience across all interactions with a business.

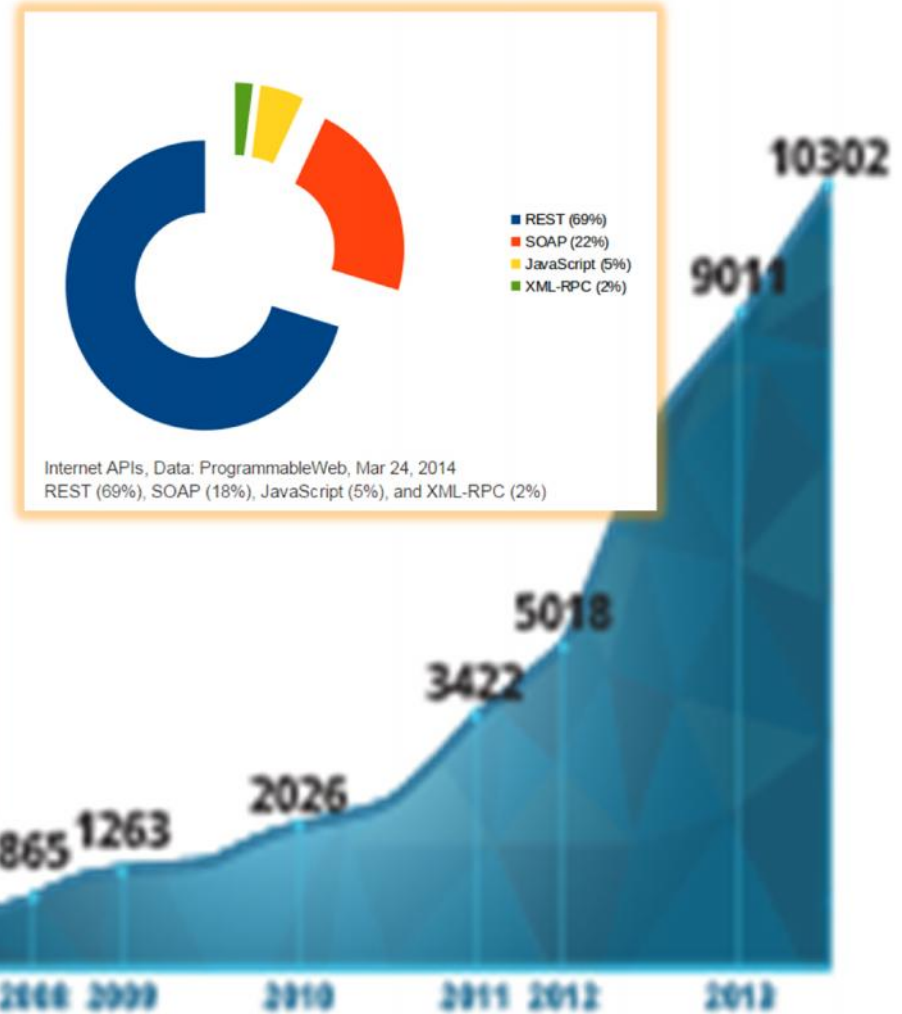


Cloud
Makes it possible

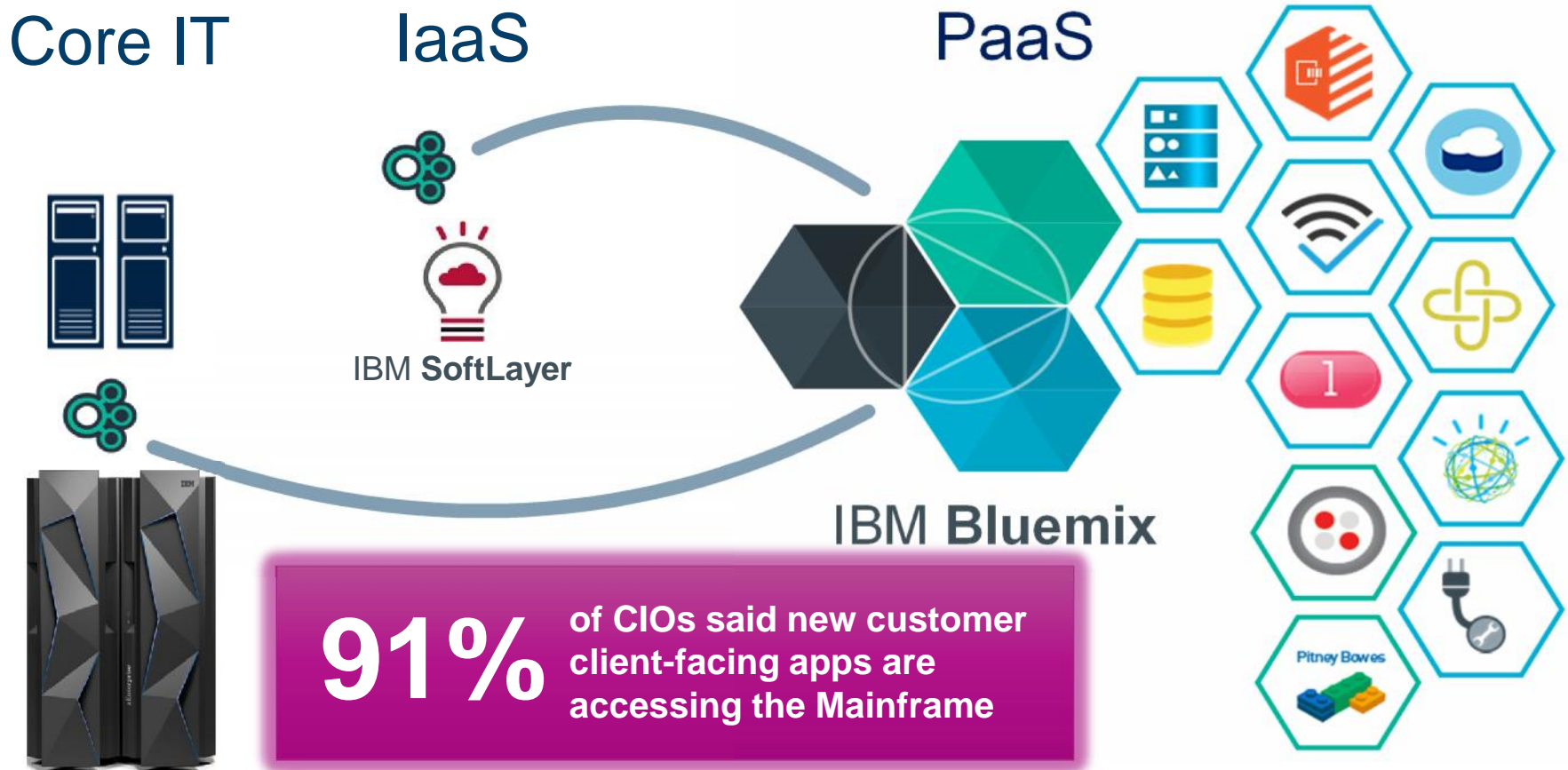


Apps today can be stitched together quickly with pre-built assets. Cloud makes the API economy possible.

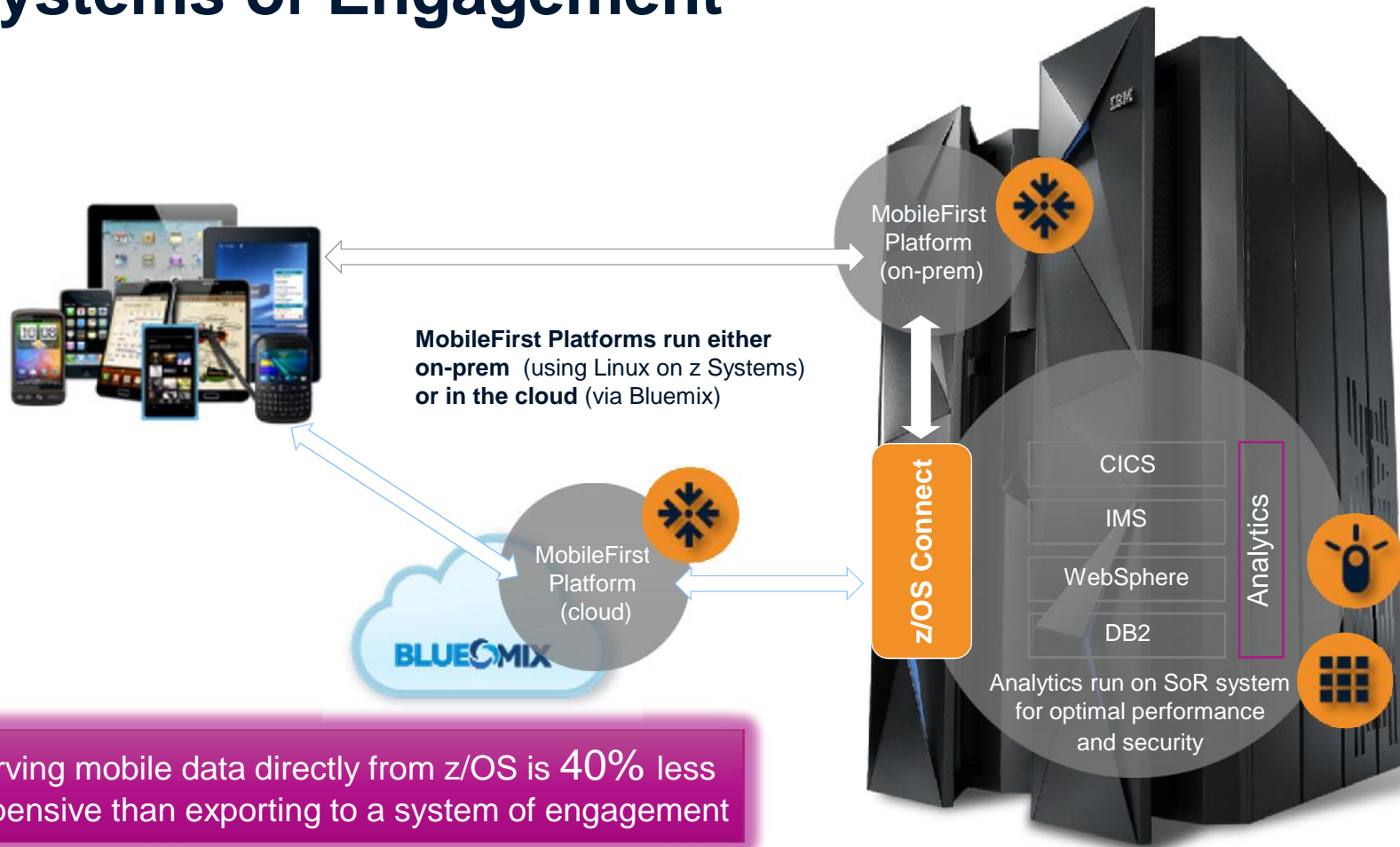
This isn't just about "social"...



Integrating new applications with Systems of Record data and applications is critical



z/OS Connect bridges Systems of Record with Systems of Engagement



Serving mobile data directly from z/OS is 40% less expensive than exporting to a system of engagement

IMS Cloud and Mobile Integration Available Today!

■ **IMS Mobile Feature Pack** (in IMS Enterprise Suite 3.1.1 – GA June 13, 2014)

Deliver IMS applications and data to mobile and cloud developers in a secure, governed, and optimized way via:

- An integrated platform that supports full discovery, modeling, enablement, and deployment of both IMS transactions and IMS data
- Built on z/OS Connect: the singular approach WebSphere, CICS, IMS, and DB2 for z/OS

34,925 TPS!

IMS Mobile Feature Pack Performance Benchmark Available

27% increase in throughput w/ z13 at equivalent CPU as compared to zEC12



IMS programs

IMS Internship Program

- In depth education provided by IMS Subject Matter Experts @ IBM's Silicon Valley Lab
- Attendees will have the opportunity to participate in training sessions that fits their needs.
- Topics include:
 - IMS Performance
 - IMS Installation & Maintenance strategies
 - OMEGAMON Installation
 - SOAP Gateway
 - IMS Fundamentals
 - IMS DB topics
 - Locking
 - IMS Sysplex Manager
 - And more...



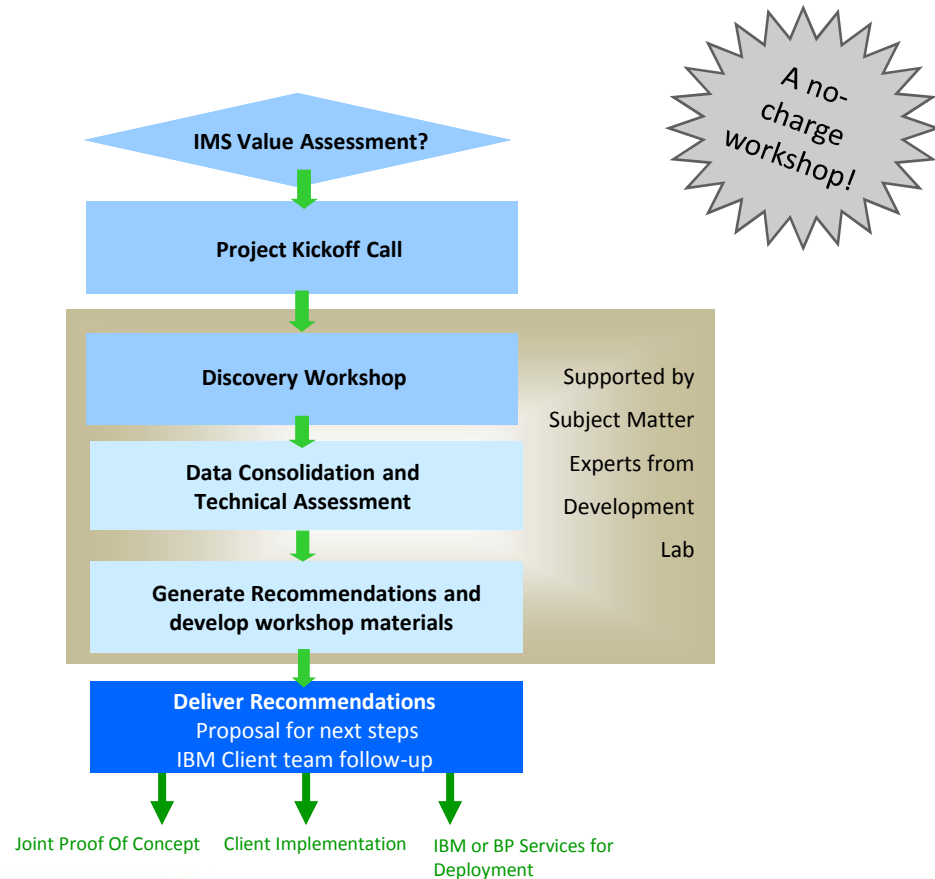
“...every subject was successfully covered by the most appropriate expert. While I was there at SVL, the program was flexible enough so we could address certain topics which I personally identified, that would benefit me...”

IBMIMS@us.ibm.com

IMS Business Value Assessment Workshop

Help clients identify ways to get more out of their IMS investment

- A proactive assessment
- Provides tactical and strategic recommendations to:
 - Increase benefits
 - Lower costs
 - Improve processing efficiencies for IMS applications



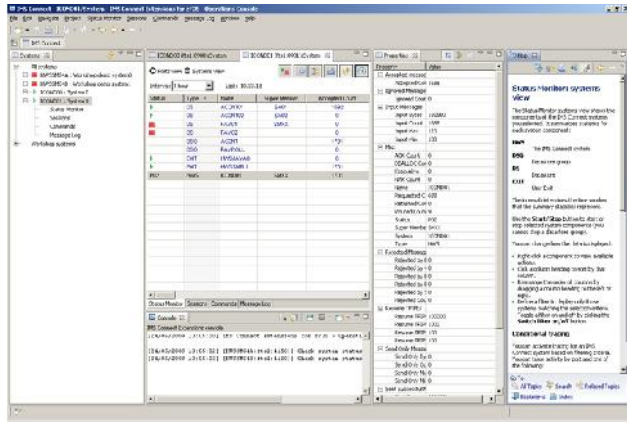
A no-charge workshop!

IBMIMS@us.ibm.com

IMS User Interfaces and IMS Tools

Innovations for Developers and System Administrators

IMS Explorer for Development (Eclipse)

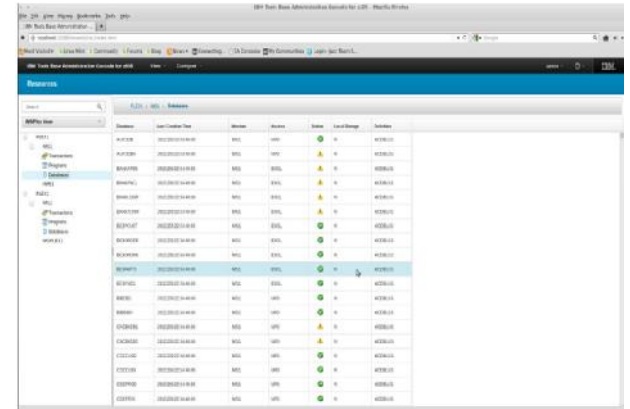


Developers

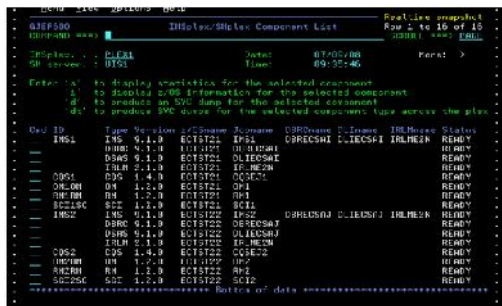


Administrators

IBM Management Console for IMS and DB2 for z/OS (Web)



ISPF



IMS



Mobile

IBM Management Console for IMS and DB2 for z/OS, V1.1

Common console for administering IMS and DB2

10/2014 GA

- ✓ Administrator Console, which was previously included in IBM Tools Base V1.4, are now integrated into IBM Management Console for IMS and DB2, V1.1

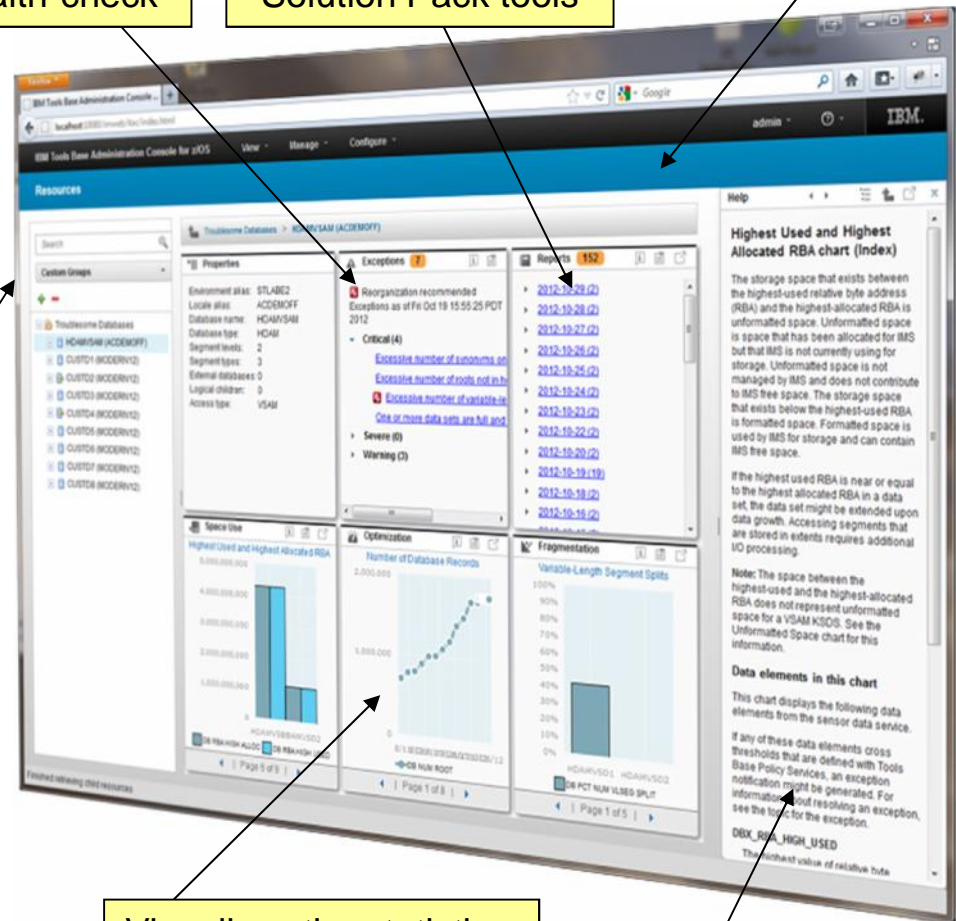
Results of DB health-check

Reports produced by Solution Pack tools

IBM One UI

DB name search and grouping

- ✓ Dashboard to integrate the resources and utilities reports for IMS and DB2
- ✓ Statistics and health-check results of databases are displayed in a Web browser



Visualizes the statistics of database and space

Online help

Dashboard based Design

- Current IMS Dashboards
 - IMSplex
 - IMS Subsystem
 - IMS Connect
 - Databases (HDAM/HIDAM/DEDDB/etc)
 - Partitions / Areas
 - Transactions
 - Programs
 - Routing Codes
 - Command Console
- Future Dashboards
 - Message Queues
 - IMS CF Structures
 - etc...
- Current DB2 Dashboards
 - Data Sharing Group
 - Subsystem
 - Database
 - Tablespace
 - Tablespace Partition
 - Indexspace
 - Indexspace Partition
- Future Dashboards
 - Tables
 - Indexes
 - Packages / Collections
 - etc...

Holistic Dashboards of IMS Databases

from Auto Discovery

...from Autonomics Director

...from Various HP Tools

Finished retrieving child resources

...from Sensors

Holistic Dashboards of DB2 Objects

...from Automation Tool Evaluations

...from DB2 Catalog

...captured by UET

...recorded by RTS_SNAPSHOT

Resource Type:	TableSpace
TableSpace Name:	DLCLP11
TableSpace ID:	87
Database Name:	DLCDB
Status:	
TableSpace Type:	
Buffer Pool:	BP0
Partitions:	0
Lock Rule:	Page
Encoding Scheme:	EBCDIC
Last RUNSTATS Update:	Sat Jan 01 00:00:00 PST 1

1	0	0	0
Critical			
1	Cannot send outgoing messages		
AC_REORG			
Severe			
0	Warning		
0			

BuildInx	05:27
UTLHIS1	RC2
LoadTest	01:27
TESTUTL	

Overflow Records Far and Near Since Previous Reorg or Load		
45		
40		
35		
30		
25		
20		
15		
March	April	May
○ Overflow records far	○ Overflow records near	

Drill down on Exceptions from an Enterprise-wide View

Resources with symptoms

Resources	Overall Health	Critical	Severe	Warning	Actions
HDAMVSAM	■	4	0	3	1
DSNRPTAS	■	1	0	1	1
DSNR1EHL	■	1	0	1	1
DSNRSORT	■	1	0	1	1
DSNR1L0J	■	1	0	1	1
DSNRPGRO	■	1	0	1	1
DSNR19JM	■	1	0	1	1
DSNR1AZM	■	1	0	1	1
DSNR1EHL	■	1	0	1	1
DBJ1AR0	■	1	0	0	0
DSNR1BXM					1
DSNRQUER					1
DSNR19JM					1
DSNR1AZM					1
DSNRPRED					1
DSNRPTAS					1
DSNR1BXM					1
DSNRQUER					1

Total: 18 Selected: 0

Synchronize action contacts each system pulling in exceptions from across the enterprise

Resource status, errors and recommendations are prioritized and presented in a simple summary with the ability to drill-down

Control of Autonomics for IMS and DB2

The screenshot displays the IBM Management Console interface for configuring DB2 maintenance windows. The left sidebar contains navigation links for Object Profiles, Utility Profiles, Exception Profiles, Job Profiles, and Maintenance Windows. The main content area is divided into two sections: 'Maintenance Window' and 'Maintenance Period Schedule'.

Maintenance Window Configuration:

- Object Profile:** VA1A (TOLEC107)
- Maintenance window name:** WEEKDAY ONLINE REORGS
- Created by:** sysadm
- Created:** 2014-08-26 10:38:14.12
- Description:** Used for maintenance that doesn't require heavy resources or outages
- Updated by:** sysadm
- Last updated:** 2014-08-26 11:01:26.51
- Limit autonomic activity to this DB2 subsystem: []
- Buttons: Save, Cancel

Maintenance Period Schedule:

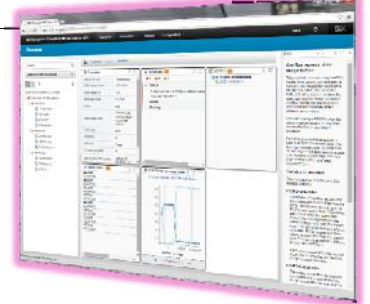
The schedule is displayed as a calendar grid for August 2014. The vertical axis represents time from 0:00 to 9:00. The horizontal axis shows dates from August 24 to August 29, 2014. Maintenance periods are visualized as colored blocks:

- Aug 25, 2014:** Period ID : 8 (blue block, 1:00 - 2:00)
- Aug 26, 2014:** Period ID : 5 (green block, 1:00 - 2:00)
- Aug 27, 2014:** Period ID : 3 (maroon block, 1:00 - 2:00)
- Aug 28, 2014:** Period ID : 6 (orange block, 1:00 - 2:00)
- Aug 29, 2014:** Period ID : 4 (purple block, 1:00 - 2:00)

A blue callout box with the text "Ability to view all Autonomics Profiles as well as define and visualize Maintenance Windows" has arrows pointing to the 'Maintenance Windows' sidebar item and the 'Maintenance Period Schedule' calendar view.

Integrated Help / Education

The screenshot shows the IBM Tools Base Administration Console interface. The main content area displays a 'Troublesome Databases' view for 'HDAMVSAM (ACDEMOFF)'. It includes sections for Properties, Exceptions (with 7 total, including 4 Critical), Reports (152), and Optimization. A 'Spac' chart titled 'Highest Used and Highest Allocated RBA chart (Index)' is visible, showing two bars for 'DB RBA HIGH ALLOC' and 'DB RBA HIGH USED'. An integrated help window is open on the right, providing detailed information about the chart, including a note that the space between the highest-used and highest-allocated RBA does not represent unformatted space for a VSAM KSDS. A blue callout box with white text points to the chart and help window, stating: 'Integrated help educates new and experienced DBAs on database concepts and how to interpret charts'.



IMS Tools help you get the most from you IMS investment



Accelerate IMS upgrades & optimize IMS performance

1. Quickly clone your IMS systems with the **IMS Cloning Tool**
 2. Analyze, modify, and deploy IMS resources and parameters with the **IMS Configuration Manager**
 3. Measure and compare IMS system performance with the **IMS Performance Analyzer**
 4. Diagnose and pinpoint overall transaction performance issues with the **Transaction Analysis Workbench for z/OS**
-
- Deliver on your performance and high availability requirements with the **IMS Performance Solution Pack**

Complete Database Management

- Monitor, manage and maintain your IMS databases with the **IMS Database Solution Pack** and the **IMS Fast Path Solution Pack** including enhanced autonomics to better sense the health of your databases and take action for you
- Backup and restore your IMS databases with speed and confidence with the IMS capabilities with the **IMS Recovery Solution Pack**



IMS Tools Solution Packs

All with support for the latest IMS version on Day 1 – QPP & GA!



IMS Database Solution Pack

Autonomics
❖ IBM Administration Console

- ❖ DB Reorg Expert
- ❖ HP Unload
- ❖ HP Load
- ❖ HP Prefix Resolution
- ❖ Index Builder
- ❖ HP Image Copy
- ❖ HP Pointer Checker
 - IMS DB Repair Facility
- ❖ IMS Library Integrity Utilities

IMS Fast Path Solution Pack

Autonomics
❖ IMS Administration Console

- ❖ HP FP Utilities
 - FP Advanced Utilities
 - FP Online Utilities
- ❖ IMS DB Repair Facility
- ❖ IMS HP Image Copy
- ❖ IMS Library Integrity Utilities

IMS Recovery Solution Pack

IMS Administration Console

- ❖ DB Recovery Facility
- ❖ HP Change Accumulation
- ❖ HP Image Copy
- ❖ DRF Extended Functions

IMS Performance Solution Pack

IMS Administration Console

- ❖ IMS Connect Extensions
- ❖ IMS Performance Analyzer
- ❖ IMS Problem Investigator

Get Connected with IMS!

 Find us on
Facebook
facebook.com/IMSFans

 **slideshare**
present yourself
slideshare.net/ibmims


twitter.com/IBM_IMS


linkd.in/IBM_IMS


instagram.com/ibm_ims


bit.ly/IMS_YouTube

ibmims@us.ibm.com



IBM IMS Videos **Playlists** Channels Discussion

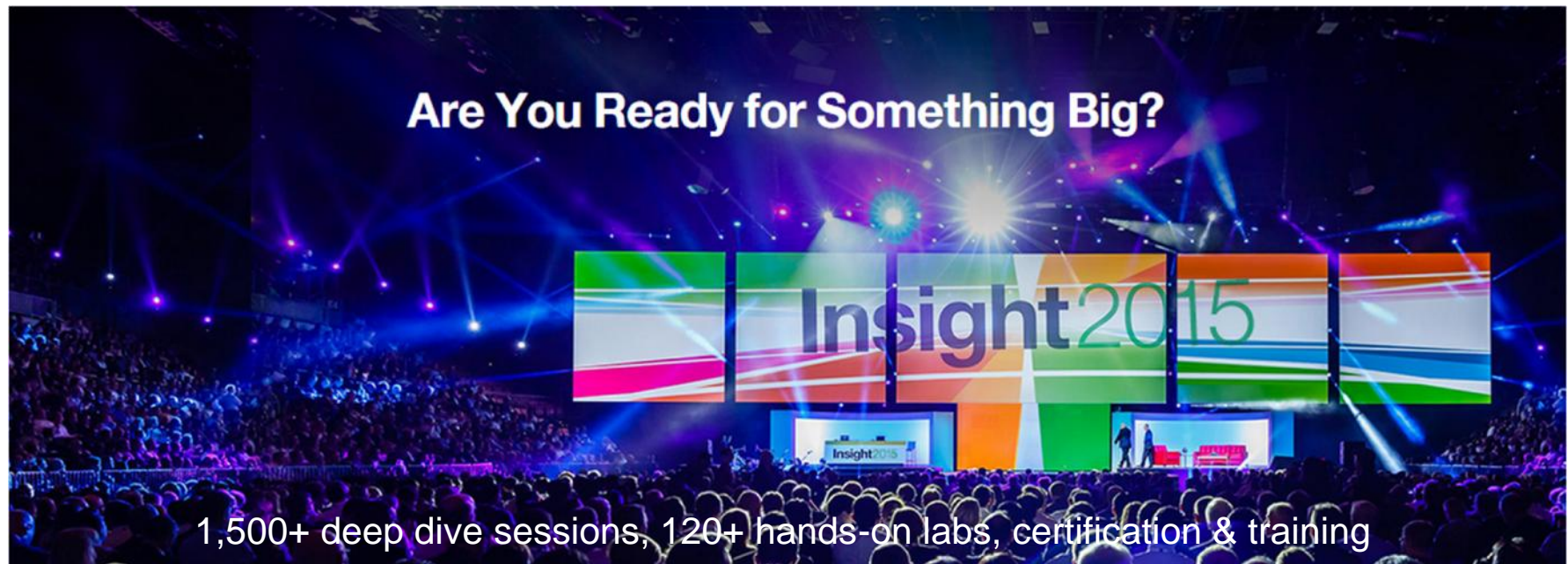
IMS, Mobile and Bluemix
Updated yesterday
Good Health zSoR Bluemix and IMS Explorer tooling
IMS, zOS Connect and BlueMix
View full playlist (6 videos)

IMS Security
Intro to Security on z and IMS
IMS Security Scenarios
IMS Security Scenario: SOAP
View full playlist (3 videos)

IMS Tools
Management Console: A Wellness Prescription for
IMS Library Integrity Utilities DBD Viewer
Introduction to IMS Workload Router
View full playlist (4 videos)

IMS Fundamentals
IMS Fundamentals - Part 1
IMS Fundamentals Part 2: Online Architecture
IMS Fundamentals Part3: Dependent Regions
View full playlist (3 videos)

<http://www.youtube.com/user/ReThinkIMS>



IBM IMS: The world depends on it

Many of the largest corporations in the world rely on IBM Information Management System (IMS) to run their business. **Which, when you stop to consider it, is really *your* business.**