



WebSphere® software

IBM WebSphere ILOG Rules for .NET

Business rule management for Microsoft .NET and SOA environments

Highlights

- **Complete BRMS for .NET**
- **Integration with Microsoft® Visual Studio**
- **Business rule management through Microsoft Office**
- **Collaboration support for all users**
- **Fast, scalable business rule engine**

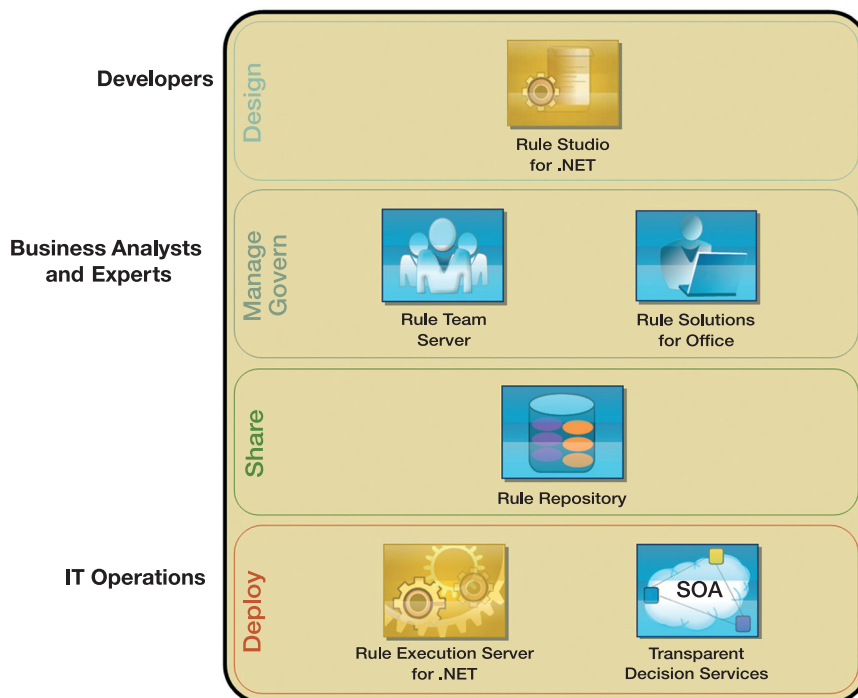
Better automated decisions, and improved alignment between business and IT

Business rule management systems (BRMS) bring a number of advantages for organizations that want to enhance the effectiveness of operational systems—automating decisions with a high degree of precision and personalization, increasing straight-through processing, and ensuring compliance with internal policies and external regulations. At the same time, a BRMS can facilitate the implementation of automated decision logic by defining business rules in a way that both business

and technical users can understand, reducing ongoing application maintenance time and cost.

Microsoft-centric BRMS

The IBM® WebSphere® ILOG Rules for .NET BRMS makes the power and flexibility of advanced rule management technology available to developers, system administrators, business analysts and business policy managers, leveraging more than 15 Microsoft products and technologies. Rule Studio for .NET runs within Microsoft Visual Studio to provide authoring, testing and deployment of business rules through a single integrated development environment (IDE), and the innovative IBM WebSphere ILOG Rule Solutions for Office let business users maintain business rules directly through Microsoft Office Word and Excel.



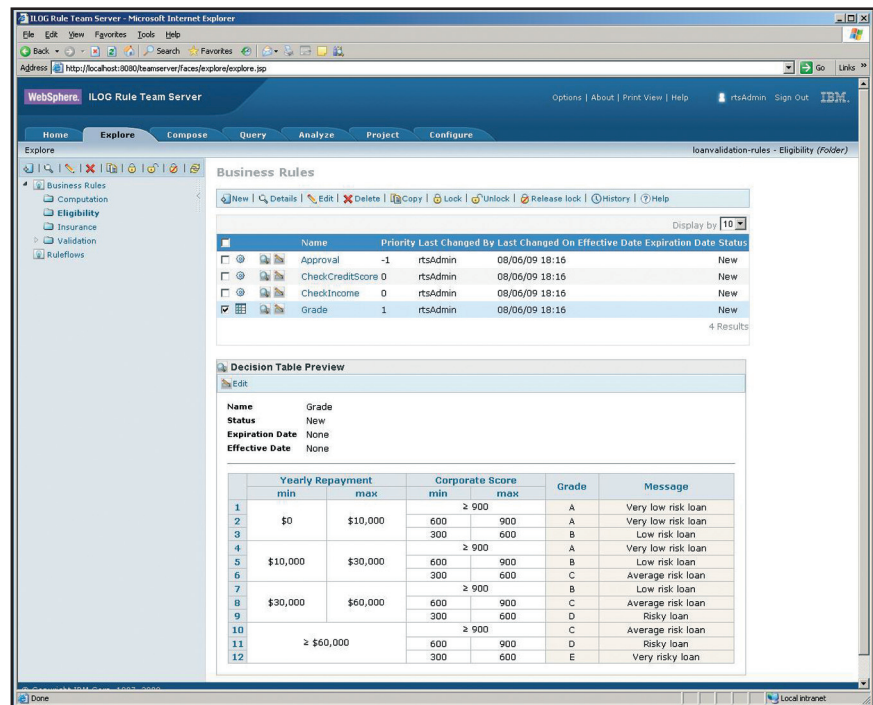
The Rules for .NET BRMS provides a comprehensive solution for defining, maintaining and deploying rule-based applications

Communication and collaboration

Rules for .NET also provide tools and mechanisms to facilitate communication and collaboration among users through its integration with IBM WebSphere ILOG Rule Team Server. Distributed business teams can collaborate through a centralized rule repository and Web-based environment to keep business rules in sync with policies and operations.

Easy, safe and predictable rule management

Rule Team Server is designed to enhance productivity and enable easy, safe and predictable rule management for business users. Distributed business teams can easily create, manage, and communicate business rule changes with each other and IT. Rule Team Server's configurable, easy-to-use interface and powerful functionality give business users control of operational decision logic and visibility into how rules affect the systems that interact with the BRMS.



Rule Team Server is a collaborative, web-based environment for business user rule management

Rule Team Server empowers business teams to:

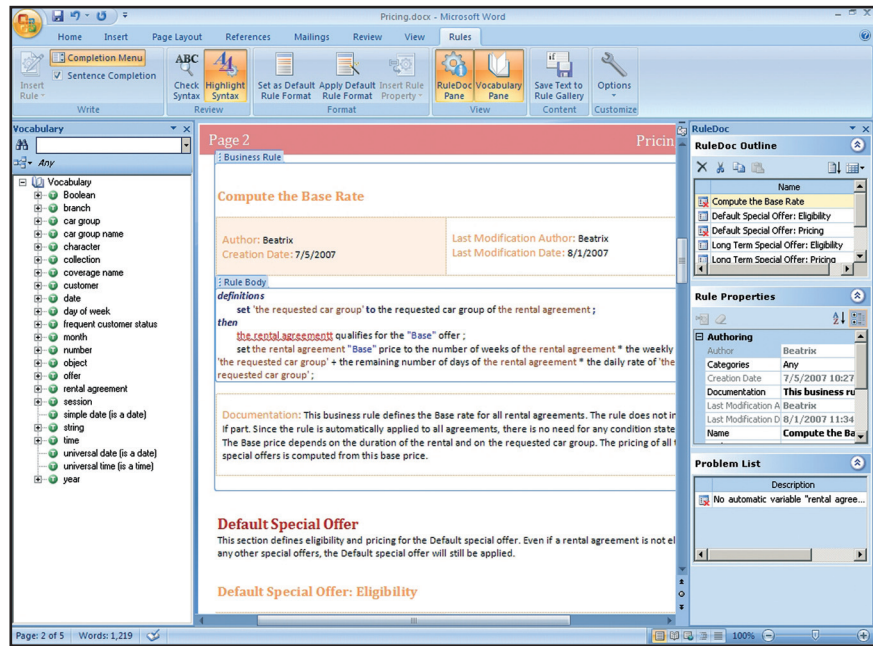
- *Author and edit rules using their own business vocabulary*
- *Manage collaboration with role-based permissions, access controls and customizable rule metadata properties*
- *Simplify rule projects through IBM ILOG's Smart Views, filters and reports*
- *Facilitate rule maintenance with templates, point-and click editors, error checking and versioning*
- *Ensure rule quality with customizable queries, reports and visual comparisons of changes between versions*

Guided rule maintenance through Microsoft Office

Rule Solutions for Office extends rule management to business experts across the enterprise. By loading a lightweight plug-in for Microsoft Office, Word and Excel, business users can work with file-based "ruledocs" that help them to author new rules or edit existing rules using familiar desktop tools, while enforcing the underlying application requirements of the systems that will invoke these rules in the production environment.

Rule Solutions for Office facilitates rule maintenance by:

- *Enabling flexibility of rule maintenance: Rule projects or subsets of a project are extracted from Rule Team Server in the form of ruledocs, which can be shared and edited offline, and then returned to Rule Team Server for implementation and deployment to production systems.*
- *Providing guidance in authoring or editing rules: Ruledocs contain the underlying details of the associated rule project. Rule logic and syntax errors are highlighted, and IBM ILOG's Intellirule auto-completion editors provide users with interactive assistance.*
- *Increasing business user productivity in the rule management life cycle: Rule Solutions for Office helps people to work within familiar applications, maximizing their productivity. It also assists structured business rules and unstructured information in relating to these rules to be combined for a better understanding of business requirements and documentation purposes.*



Rule Solutions for Office extends rule authoring and maintenance across the enterprise

Developers and application architects

Rules for .NET come with comprehensive functionality for developing and maintaining business rule applications:

- **Microsoft Visual Studio integration:** *Rule Studio for .NET provides a set of modules for Visual Studio, enabling development, maintenance and deployment of rule-based applications within a single, widely used IDE. Application architects and developers can handle both business rules and application source code without leaving Visual Studio. They immediately achieve significant gains in productivity for building rule-based applications for the .NET platform. Rule projects can be easily shared with business users through Rule Team Server, which greatly simplifies collaboration and ongoing rule management.*

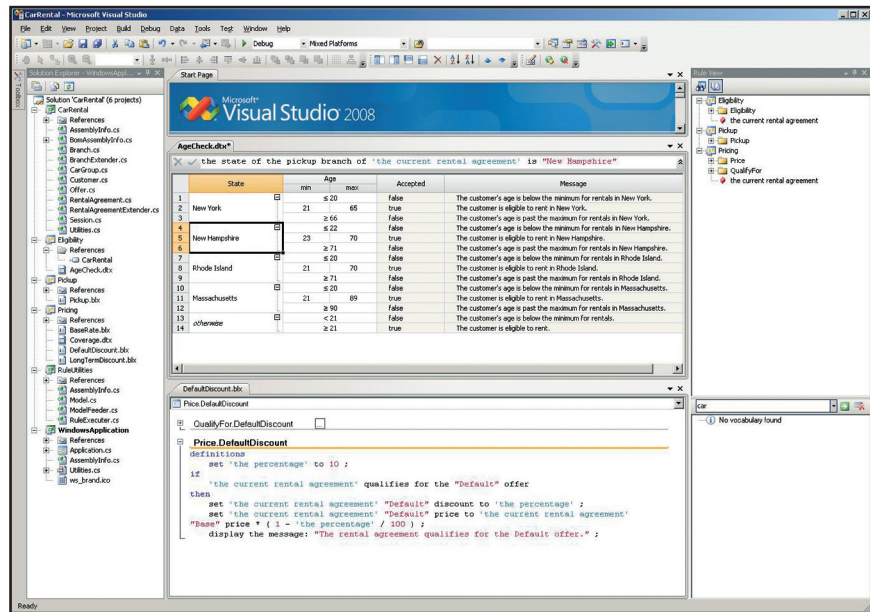
- **Business object model view:** *Business rules can be expressed with familiar business terms and mapped directly to .NET objects using an object model view that reflects the structure of the business domain rather than the underlying technical implementation.*
- **Visual rule editor:** *Business rules can be written using a customizable business rule language with a natural syntax.*
- **Decision table editor:** *Developers can use Rule Studio to define company policies in decision tables, which facilitate visualization and management of large sets of rules. Users get a more concise representation of business rules and a common means for communicating with business users.*

- **Ruleflow editor:** *The sequence and conditional invocation for firing rules can be controlled with Rule Studio using its Ruleflow mechanism. It graphically represents rules and helps the user to state the order in which they are applied in response to specific conditions.*
- **Direct execution of .NET objects:** *Rules for .NET provides an application programming interface (API) compliant with the Common Language Runtime (CLR). Rules can be executed directly on CLR objects, enabling them to run on top of .NET objects, XML Web services and ADO.NET data sources. The engine also supports .NET events and many other platform features.*

Microsoft centricity

Rules for .NET works with more than 15 different Microsoft products and technologies, including:

- Office 2007
- .NET Framework 3.5
- ASP.NET Server Controls
- Visual Studio 2008
- Windows® Workflow Foundation (WF)
- MS Build
- Microsoft SQL Server 2005 and 2008
- Visual Source Safe
- Communication Foundation (WCF)
- BizTalk (WCF Integration Point)
- Microsoft Management Console 3.0
- Windows Services
- Logging Application Block
- WMI Events and PerfMon
- Windows Server 2003 and 2008
- Windows XP and Vista



Rule Studio is a Visual Studio-based development environment for rule-based applications

Execute rules with confidence

Rules for .NET offers out-of-the-box features for execution and deployment to .NET and SOA environments.

Decisions can be shared across applications and BPM processes for reuse.

- **High performance and scalability:** *WebSphere ILOG Rule Execution Server for .NET supports both vertical and horizontal models for high-availability and scalable deployments using standard Microsoft configurations for clustering. Its services also support engine pooling and synchronization of decisions across execution nodes in a cluster.*
- **Management and monitoring:** *All the services in Rule Execution Server for .NET support standard configuration with Microsoft Management Console (MMC), Windows Event logs and PerfMon.*

- **Standards-based SOA:** *Using the Transparent Decision Service function in Rule Execution Server, a Web service endpoint, indicated in Web Services Description Language (WSDL), can be automatically created from deployed sets of rules, or "rulesets," without any coding, extending the interoperability of decision services for cross-platform SOA initiatives.*
- **Native .NET rule engine:** *Written entirely in C#, the Rules for .NET rule engine is packaged as a .NET assembly that can be used with any programming language supported by the .NET platform (e.g., C#, VB.NET and Managed C++). This supports seamless integration of the rule engine with any .NET application independent of architecture and programming languages. The rule engine can be integrated with solutions built on ASP.NET, Windows Forms, XML Web Services and Microsoft Office.*



For more information

To learn more about the IBM WebSphere ILOG Rules for .NET, please contact your IBM marketing representative or IBM Business Partner, or visit <http://rulesfordotnet.ilog.com>.

© Copyright IBM Corporation 2009

IBM Corporation
Software Group
Route 100
Somers, NY 10589 U.S.A.

Produced in the United States of America
August 2009
All Rights Reserved

IBM, the IBM logo, ibm.com, and WebSphere are trademarks or registered trademarks of International Business Machines Corporation in the United States, other countries, or both. If these and other IBM trademarked terms are marked on their first occurrence in this information with a trademark symbol (® or ™), these symbols indicate U.S. registered or common law trademarks owned by IBM at the time this information was published. Such trademarks may also be registered or common law trademarks in other countries. A current list of IBM trademarks is available on the Web at "Copyright and trademark information" at ibm.com/legal/copytrade.shtml.

Microsoft and Windows are trademarks of Microsoft Corporation in the United States, other countries, or both.

Other product, company or service names may be trademarks or service marks of others.



Recyclable, please recycle.