

Extends personal networking to your workstation



IBM Personal Communications

Highlights

Includes tools and new technology to help transform your business into an e-business

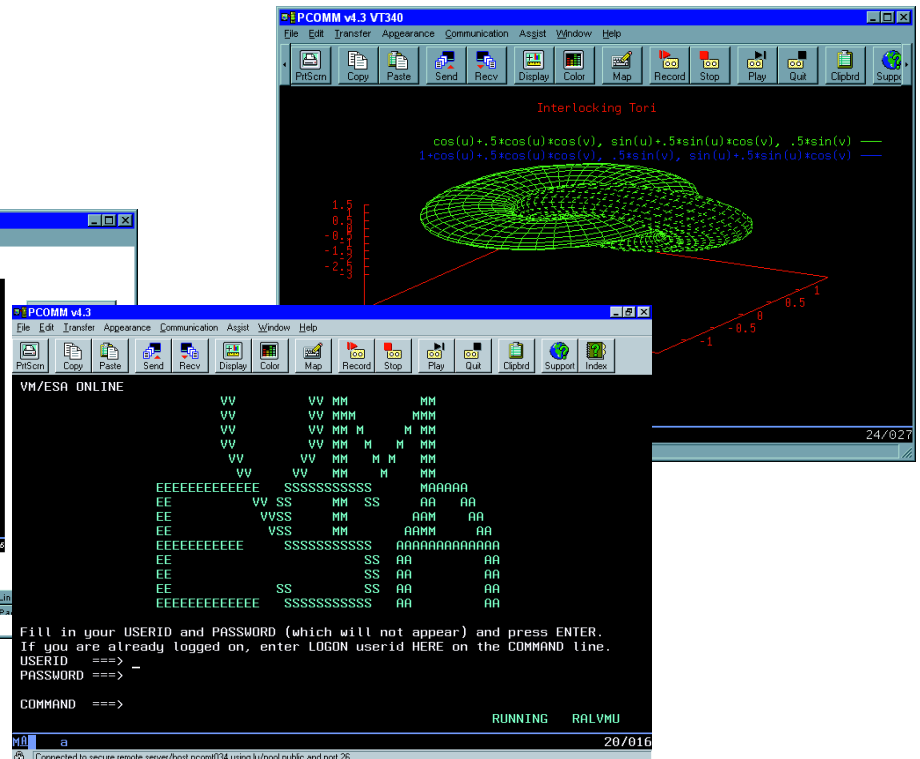
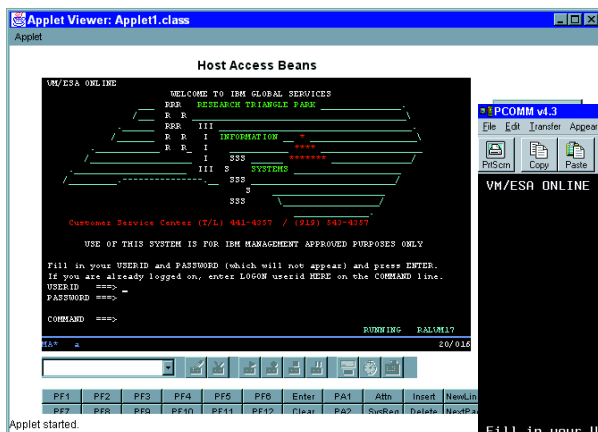
Allows you to capitalize on existing investments, and extends applications to Web-based technologies

Provides a single CD-ROM package for ordering and installing

Enables users to have access to mission-critical business systems regardless of platform or networking environment

IBM Personal Communications, available on Microsoft® Windows® 95, Windows 98, Windows NT®, Windows 2000 and IBM OS/2®, is a host communication and terminal emulation package that features 3270, 5250 and VT emulation; SNA application support; integration; and SNA and TCP/IP connectivity. Personal Communications is a key component of the IBM Host Integration Solution that provides everything you need to enable secure access to your mission-critical business systems for virtually every user.

Personal Communications brings the power of personal networking to your workstation and exploits existing networking capabilities. This includes SNA applications and technologies, such as advanced program-to-program communication (APPC) and High-Performance Routing (HPR). It also provides TCP/IP support and an extensive API set, offering Host Access Class Library (HACL) and Emulator High-Level Language Applications Programming Interface (EHLLAPI) through C++, VBScript, Java™ and various other programming languages.



Multiple Personal Communications sessions illustrating SSL support, VT340 graphics and a custom application using Host Access Beans for Java

A leading-edge solution for e-business

Key enhancements for Personal Communications

The key enhancements for Personal Communications are:

- Euro-sign support
- Secure Sockets Layer (SSL), Version 3
- Host Access Beans for Java
- ActiveX controls
- Java interface for HACL
- ODBC, Version 3.0 support
- Hot-standby and load-balancing support
- Tivoli®-enabled capability for installation and remote commands
- VT340 graphics
- Windows 98 and Windows 2000 support

Security when you need it most

Personal Communications supports SSL, Version 3.0. When combined with the support for the load-balancing Service Location Protocol (SLP)—found in products such as Communications Server for Windows NT and NetWare for SAA—Personal Communications can be configured to connect to only SSL-enabled servers ensuring more network security.

Improved development capabilities

Personal Communications supports Host Access Beans for Java (based on the JavaBeans™ specification), ActiveX controls, VB automation objects and VBScript. Building on Personal Communications' leadership in object-oriented programming, the HACL API has been enhanced to provide a Java programming interface.

With Java interface for HACL and Host Access Beans for Java, you have the ability to create applications for both Personal Communications and IBM Host On-Demand, allowing the greatest amount of flexibility while preserving your investments for the future. And Personal Communications has a set of ActiveX controls, delivering many of the features of Host Access Beans for Java.

Industry-standard APIs

Personal Communications' extensive API set has been further enhanced by improving EHLLAPI application performance and by the inclusion of industry-standard 32-bit EHLLAPI APIs, as well as Windows HLLAPI (WinHLLAPI) APIs.

Industry-leading emulation

Personal Communications continues to set the standard for terminal access to business-critical applications and data on different host systems, taking advantage of 3270, 5250, TN3270E, TN5250, VT52, VT00, VT220 and VT340 emulation.

Benefits

Personal Communications ensures that you are ready to make the transition to e-business with tools that you can use today and through new technologies that provide:

- *Network integration*
Personal Communications can handle nearly any protocol, such as ISDN, HPR, SNA and IP—to help you connect a user to any data, anywhere.
- *Connectivity*
Personal Communications enables your company to connect to your customers, suppliers, partners and employees.
- *Consistent look and feel*
As your corporate information technology (IT) strategy evolves, don't spend valuable time and money retraining users whenever you change operating systems. Personal Communications looks the same, whether it's for Windows 95, Windows 98, Windows NT, Windows 2000 or OS/2.

- *Easy licensing options*

From multiple machines to a home installation license, Personal Communications makes it as easy to own as it is to use.

- *Open system architecture*

From EHLLAPI to TCP/IP to SNA, Personal Communications provides industry-standard solutions to preserve your investments into the future.

- *Extensive language support*

Personal Communications is multilingual. Available in 21 languages, it includes double-byte character set (DBCS) languages. It supports the euro sign, as well as extensive keyboard and code-page support.¹

- *A single Host Integration Solution*

Team Personal Communications with other products in the Host Integration Solution, including Host On-Demand and IBM Communications Server for OS/2, Windows NT, Windows 2000 and IBM AIX® for the most complete answer to host access and network integration in the industry.

Easy ordering—CD-ROM package options

To simplify ordering and installation, Personal Communications is packaged on a single CD-ROM for the 3270, 5250 and VT environments. A separate CD-ROM, Personal Communications for IBM AS/400®, is available for users who need only 5250 and VT support.

For more information

To learn more about IBM Personal Communications, visit:
www.ibm.com/software/network/pcomm

IBM Personal Communications features and functions

	Windows 95, Windows 98, Windows NT, Version 4.3 and Windows 2000, Version 4.3.1			OS/2, Version 4.2	
	3270	5250	VT	3270	5250
Attachments					
• IEEE 802.2	x	x	x	x	
• 3174 Peer Communication (LAN over coaxial)	x	x	x	x	x
• IPX/SPX	x			x	
• NWSAA Client and Communications Server for Windows NT Client					
APPC	x	x			
LUA	x				
• TCP/IP	x	x	x	x	x
• SNA Distributed Function Terminal (DFT)	x			x	
• Non-SNA DFT	x			x	
• Control Unit Terminal (CUT)				x	
• Twinaxial	x			x	
• AS/400 and S/3x Console (asynchronous and twinaxial)	x			x	
• SDLC (including auto-dial capability)	x	x		x	x
• Wide Area Connector (WAC)	x	x		x	x
• SNA over asynchronous	x	x		x	x
• Asynchronous				x	
• Asynchronous for IBM Global Network® (IGN)	x			x	
• Home3270	x			x	
• Hayes Autosync	x	x		x	x
• Hayes Autosync II (Windows 95 and Windows 98 only)	x	x			
• Microsoft SNA Server					
FMI	x				
Windows APPC	x	x			
Windows LUA	x				
• APPC3270 (LU2 over APPC)	x			x	
• IBM AnyNet® (SNA over TCP/IP)	x	x		x	x
• 3270 pass-through by AS/400	x			x	
• ISDN, X.25	x	x		x	x
• PCI MPA	x	x		x	x
• Enterprise extender	x	x			
• 3270 pass-through over twinaxial	x			x	
• OEM adapter support	x	x	x	x	x
Print support					
• Host print	x	x	x	x	x
3812 printer emulation		x			x
Host print transform		x			x
ASCII transparent	x	x	x	x	x
Printer definition table (PDT)	x	x		x	x
• Screen Print	x	x	x	x	x
• Virtual Print					
• ZIPPRINT	x			x	

IBM Personal Communications features and functions (continued)

	Windows 95, Windows 98, WindowsNT, Version 4.3 and Windows 2000, Version 4.3.1			OS/2, Version 4.2	
	3270	5250	VT	3270	5250
Installation and customization					
• Remote unattended installation (CID)				x	x
• Silent installation	x	x	x		
• Microsoft SMS support	x	x	x		
• Installation and configuration from LAN server	x	x	x	x	x
• Automatic DFT connection	x			x	
• Simultaneous sessions with different code pages and keyboard languages	x	x	x	x	x
• Automatic logon		x			x
• 26 display and printer emulation sessions	x	x	x	x	x
• Selectable display sizes	x	x	x	x	x
• VT52/100/220/340 emulation			x		
• Toolbar customization	x	x	x	x	x
• Text configuration files	x	x	x	x	x
• Configuration update files	x	x			
• Initial configuration definitions	x	x			
• CM/2 migration	x	x		x	x
• Tivoli support	x	x			
Networking function					
• SNA data compression (emulator sessions)	x			x	
• SNA data compression (LU 6.2 sessions)	x	x			
• AnyNet Sockets over SNA	x	x		x	x
• Session-level encryption				x	
• VPD/EVPD, Alert	x			x	
• Response time monitor (RTM)	x			x	
• Command start/stop/query SNA node	x	x		x	x
• Load-balancing, hot standby, SLP for IPX	x	x			
• Secure Sockets Layer (SSL), Version 3.0	x	x	x		
• HPR routing over IP for nondisruptive backup	x	x			
• Automatic link reactivation	x	x			
• IBM APPN® end node	x	x		x	x
• APPN LEN node					
• HPR	x	x		x	x
• Dependent LU requester (DLUR)	x	x		x	x
Utilities					
• 3174 port 0 utility				x	
• Administration tools	x	x	x	x	x
• Information bundler for problem determination	x	x	x	x	x
• Internet service	x	x	x		
• Enhanced log/trace viewer	x	x	x		

IBM Personal Communications features and functions (continued)

	Windows 95, Windows 98, WindowsNT, Version 4.3 and Windows 2000, Version 4.3.1			OS/2, Version 4.2	
	3270	5250	VT	3270	5250
User interface					
• Graphical, customizable toolbar feature	x	x	x	x	x
• Rule line	x	x	x	x	x
• Menu bar customization	x	x	x	x	x
• Pop-up keypad and hot keys	x	x	x	x	x
• 3-D hot spots	x	x	x	x	x
• Macro record and play	x	x	x	x	x
• Graphical keyboard remapping	x	x	x	x	x
• NLS key-caps support	x	x	x	x	x
122-key keyboard support				x	x
DBCS unique keyboard support	x	x			
• Customizable mouse	x	x	x	x	x
• Drag-and-drop color remapping	x	x	x	x	x
• Crisp fonts, automatic sizing, fixed font size	x	x	x	x	x
• Display setup, view setup, window setup	x	x	x	x	x
• Internet hot spots	x	x	x	x	x
• OLE/ActiveX objects	x	x	x		
• APL support	x			x	
• Automation and scripting utility (CMMOUSE)	x	x	x	x	x
• Accessibility for handicapped users	x	x	x	x	x
• Status bar	x	x	x		
• Euro sign	x	x		x	x
• Intelligent spreadsheet support	x	x	x	x	x
IBM AS/400 application support					
• PC C organizer and text assist	x			x	
• Enhanced nonprogrammable terminal user interface (ENPTUI)	x			x	
• AS/400 network drives (shared folders)	x			x	
Programming Interfaces					
• DOS EHLLAPI	x	x	x	x	x
• EHLLAPI, DDE, PCSAPI, CPI-C, APPC	x	x	x	x	x
• REXX EHLLAPI support	x	x	x	x	x
• EasyREXX for HLLAPI				x	x
• Visual Basic scripting	x	x	x		
• SRPI	x			x	
• REXX PSCAPI support	x	x	x	x	x
• Host Access Class Library (HACL)	x	x	x		
• TCP62	x	x			x
• Request Unit Interface (RUI)	x			x	
• Session Level Interface (SLI)	x			x	
• WinHLLAPI support	x	x	x		
• 32-bit HLLAPI	x	x	x		
• Convert macro to VBScript	x	x	x		
• Host Access Beans for Java	x	x	x		
• ActiveX controls	x	x	x		
• ODBC 3.0 SNA for SNA	x	x			

IBM Personal Communications features and functions (continued)

	Windows 95, Windows 98, Windows NT, Version 4.3 and Windows 2000, Version 4.3.1			OS/2, Version 4.2	
	3270	5250	VT	3270	5250
File transfer					
• File transfer through emulator session	x	x	x	x	x
• Lists	x	x	x	x	x
• Templates	x	x	x	x	x
• Import/export	x			x	
• Data transfer by SNA (SQL file transfer)		x			x
• ASCII— host file transfer					
XModem			x		
XModem1K			x		
YModem			x		
YModemG			x		
Host graphics					
• GDDM and GOCA	x			x	x
• Programmed symbol set	x			x	x
• Vector	x			x	x
• Copy graphics images	x			x	x
• VT340 ReGIS and Sixel support			x		

Personal Communications, Version 4.3 at a glance

Hardware requirements

- Minimum of 24MB of RAM recommended for Windows 95 and Windows 98, 32MB for Windows NT, 64MB for Windows 2000 Professional, and 256MB for Windows 2000 servers
- 486, or higher, system processor
- 40MB of fixed disk space minimum—additional space may be required depending on installation options

Software requirements

Supported by the following desktop platforms:

- Windows 95 (Personal Communications, Version 4.3)
- Windows 98 (Personal Communications, Version 4.3)
- Windows NT 4.0 (Personal Communications, Version 4.3)
- Windows 2000 (Personal Communications, Version 4.3.1)
- OS/2 (Personal Communications, Version 4.2)

Communication with the following types of server or gateway:

- IBM Communications Server for OS/2 WARP®
 - IBM Communications Server for Windows NT
 - IBM Communications Server for AIX
 - Novell NetWare for SAA, Version 2.0, or higher
 - Microsoft SNA Server
 - Direct connection to the host
-



© Copyright IBM Corporation 2000

IBM Corporation
3039 Cornwallis Road
Research Triangle Park, NC 27709

Printed in the United States of America
3-00

All Rights Reserved

AIX, AnyNet, APPN, AS/400, the e-business logo, IBM, IBM Global Network, OS/2 and OS/2 WARP are trademarks of International Business Machines Corporation in the United States, other countries or both.

Tivoli is a trademark of Tivoli Systems Inc. in the United States, other countries or both.

Microsoft, Windows and Windows NT are trademarks of Microsoft Corporation in the United States, other countries or both.

Java and all Java-based trademarks and logos are trademarks of Sun Microsystems, Inc. in the United States, other countries or both.

Other company, product and service names may be trademarks or service marks of others.

¹ EuroReady means that the IBM product, when used in accordance with IBM-associated documentation, is capable of correctly processing monetary data in the euro denomination and of respecting euro currency formatting conventions (including the euro sign), provided that all products (for example, hardware, software and firmware) used with the IBM product are also EuroReady.



Printed in the United States on recycled paper containing 10% recovered post-consumer fiber.



Designed for

Microsoft®
BackOffice®



G325-3475-06