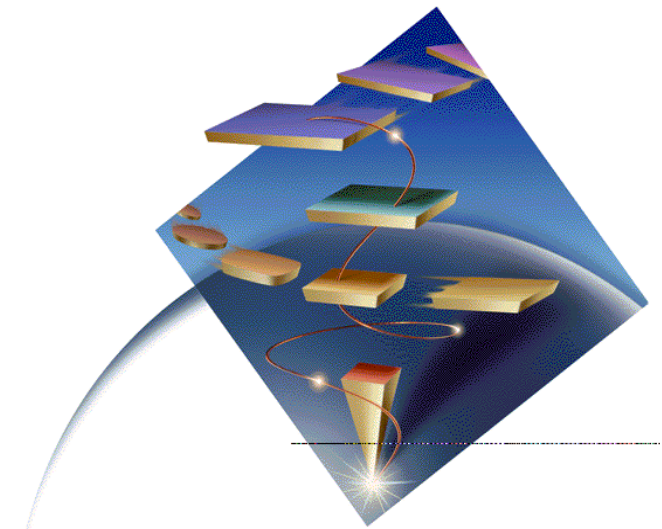


IBM eNetwork Communications Server Overview

**Enterprise-class connectivity and
universal information access for
cost effective network computing**

September 1997



IBM Software

Abstract: eNetwork Communications Server Overview

IBM's eNetwork Communications Server is a powerful, multifunction gateway, providing the technology to integrate SNA, TCP/IP, and LAN-based networks with Internet and intranet solutions.

Communications Server includes solutions for OS/2, AIX, Windows NT, OS/390 and NetWare server environments, and is fully interoperable with OS/400 networks.

Communications Server provides the enterprise with:

- Flexibility to select business applications based on their merits, not whether the network is there to support them
- Productivity that gives users seamless and reliable access to applications and data
- Advantages by implementing the latest networking technologies, while leveraging the current networking hardware and software investments
- A foundation for the future that includes the scalability required for true enterprise-wide solutions

This presentation looks at solutions for network integration, and overviews server platforms and networking technologies

IBM Software

Agenda

- **eNetwork Software Introduction**
- **Communications Server Introduction**
- **Solutions for Network Integration**
- **Platform Overviews**
 - Windows NT
 - OS/2
 - AIX
 - NetWare
 - OS/390
- **Advanced Technologies**
- **Technical Assistance**

IBM Software

Network Computing - Industry Dynamics

Industry Trends

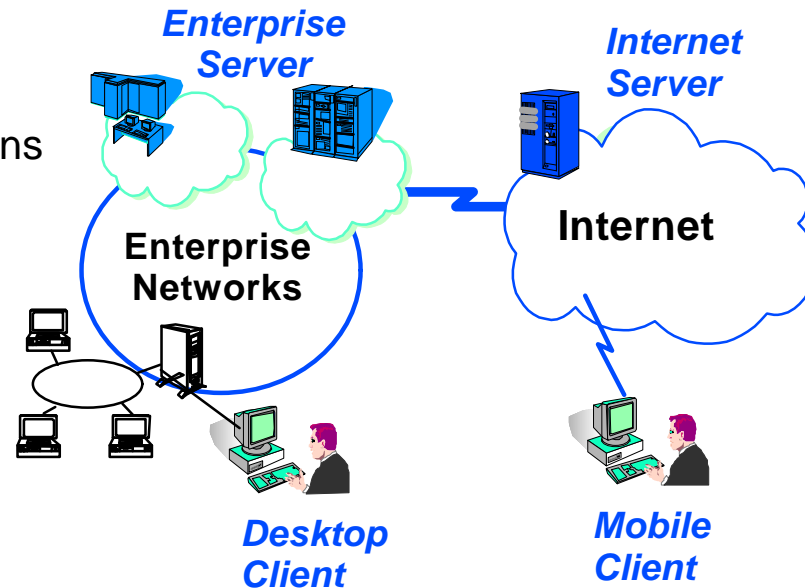
- Internet/Intranets
- TCP/IP-based applications
- e-Business Applications

Technology Influences

- Java initiatives
- Mobile / wireless
- Intelligent agents
- Video processing
- Distributed Services

New Application Needs

- e-Commerce
- Collaborative
- Multimedia Content
- Mobile



Ongoing Networking Needs

- Reduced network costs
- Availability, Reliability
- Security
- Simplified management
- Performance
- Investment Protection

Evolving Network Computing Needs

- Any to any data access and connectivity
 - Any user to any required data
 - Any application across any network
 - Multiprotocol network integration
- Cross platform independence
- Integration with e-Business applications

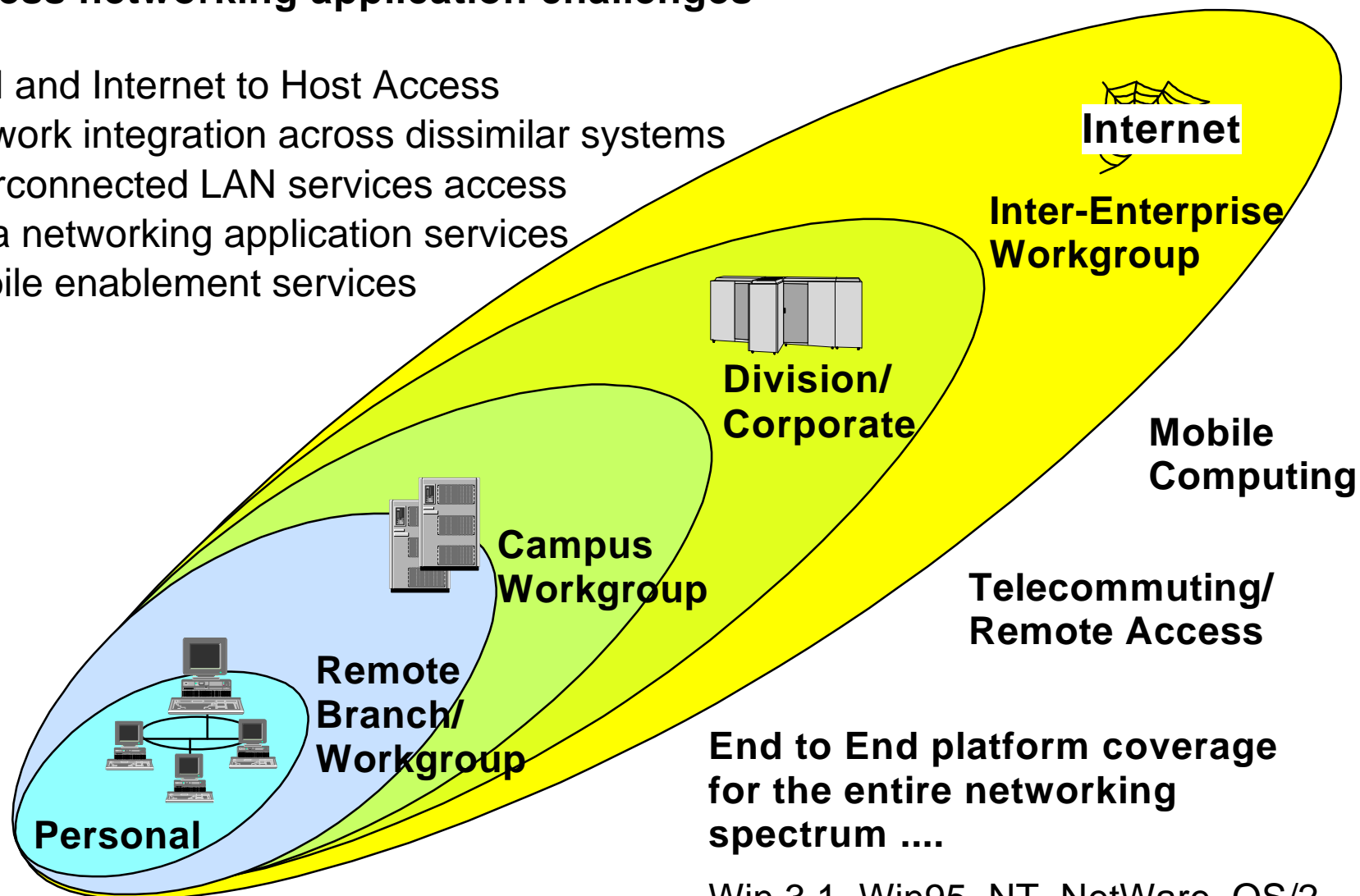
IBM Software

e-Business Infrastructure Challenges

e-Business networking application challenges

...

- LAN and Internet to Host Access
- Network integration across dissimilar systems
- Interconnected LAN services access
- Java networking application services
- Mobile enablement services



Win 3.1, Win95, NT, NetWare, OS/2, AIX, AS/400, and OS/390

IBM Software

IBM eNetwork Software

- **A full range of industry-leading client and server networking software products:**
 - Communications Servers
 - Communications Clients
 - Wireless communication
 - And soon ---the next generation of products providing Java[™] application services and mobile computing support
- **Combines IBM's expertise in delivering industrial-strength solutions with the latest technologies to provide proven solutions**
- **Designed and built on the essential elements required to address enterprise networking needs:**
 - Enterprise-class dependability
 - End-to-end universal access
 - Easy implementation and use
 - Effective network utilization

IBM Software

IBM eNetwork Software Customer Promise

Driving "e" Values

- ✓ **Enterprise Class dependability for all networks**
- ✓ **End to end universal access for network users**
- ✓ **Easy implementation, configuration, and usage for cost effectiveness**
- ✓ **Effective utilization of network assets for more cost effectiveness**

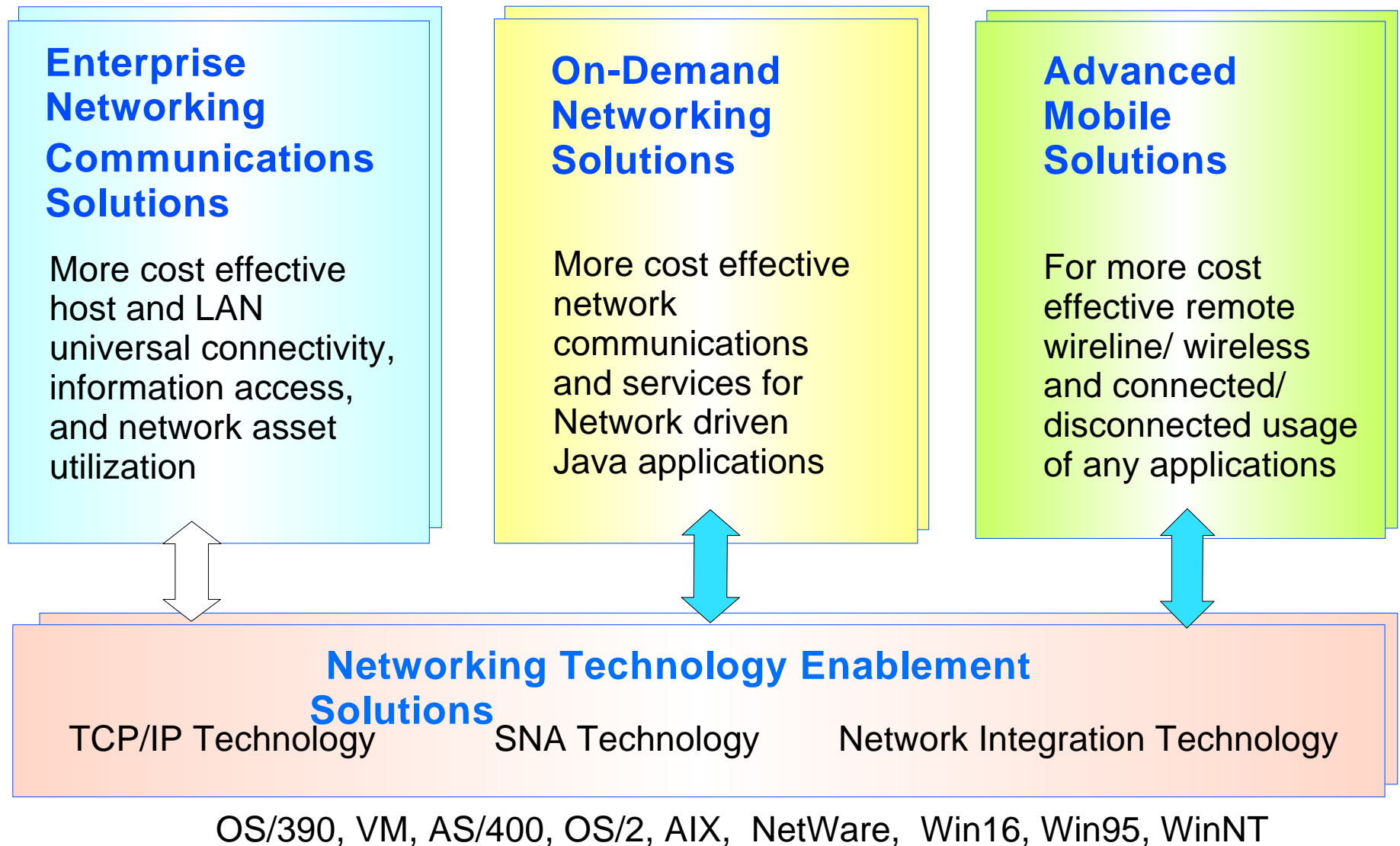
Example Product Attributes

- Reliability, availability, scalability, security, manageability
- End to end solutions across multiple protocols, operating systems, connectivities and applications for access from the office, home or on the road
- Consistent user interfaces, Web administration, "On-Demand" CD training, Interoperability, and more ...
- Higher bandwidth utilization, greater number of concurrent users, integration of networks, utilization of current applications over new networks and more

IBM Software

IBM eNetwork Software Product

Directions



IBM Software

IBM eNetwork Software Offerings

Directions

- **Enterprise Networking**
for more effective universal connectivity and network asset utilization
- **On-Demand Networking**
for leadership in more effective Network driven Java solutions
- **Advanced Mobile Networking**
for more efficient mobile professional application usage
- **Networking Technology**
Leadership with expanded focus on TCP/IP and network integration

Target Problem Focus

- Host Access, Network Integration and Interconnected LAN Services access
- Java application services; reduce networking management costs
- Enablement for mobile disconnected networking
- Network enablement to reduce the cost of networking

eNetwork Software Offering

- Communication Servers for OS/2, NT, AIX, OS/390, Netware
- Personal Communications Clients for Win3.1, Win95, NT, OS/2
- Communications Suite
- Host On-Demand
- Files On-Demand
- On-Demand Client/Server (Project)
- ARTour Client & Gateway
- Web Express, Emulator Express
- Europa Client/Server (Project)
- FTP Alliance
- TCP/IP leadership focus
- SNA technology
- Multiprotocol integration

IBM Software

Enterprise Networking Solutions

. . . for companies who want to:

- **Have the freedom to make application decisions based on business needs, not network protocols.**
- **Connect users to the intranet or Internet to exploit network computing advances**
- **Sharpen their competitive edge by deploying best-of-breed applications without updating their network or building parallel networks**
- **Leverage their current investments and run SNA applications over TCP/IP networks and vice versa**
- **Improve their network's availability, efficiency, and performance.**
- **Be positioned for the applications and networks of the future**

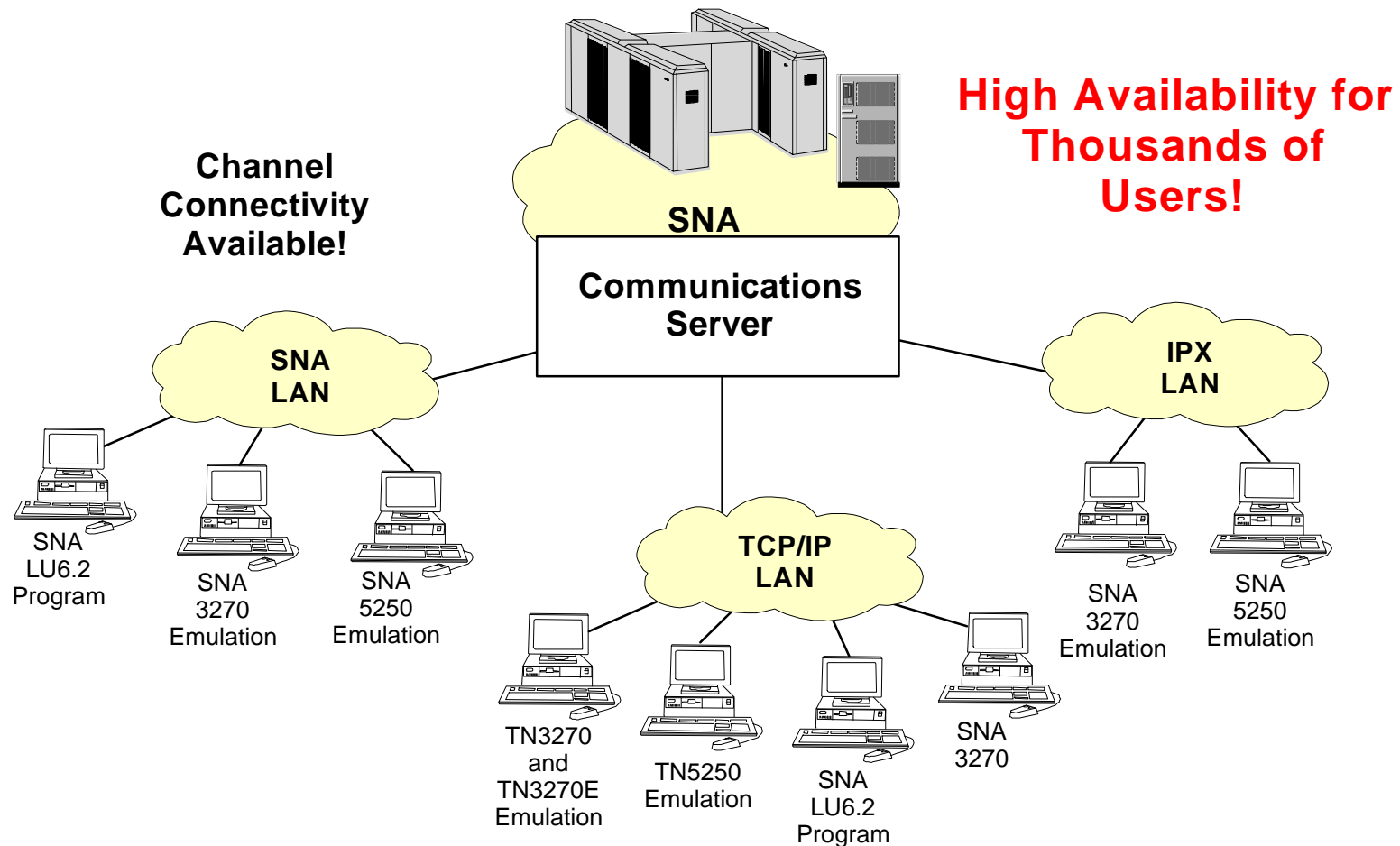
IBM Software

What is a Communications Server?

- **Powerful, multifunction gateway:**
 - SNA gateway to host applications
 - Multiprotocol gateway supporting the integration of SNA, TCP/IP, IPX and NetBIOS environments
- **Multiplatform gateway:**
 - Server solutions for OS/390, AIX, OS/2, Windows NT, and NetWare server environments
 - Fully interoperable with OS/400 networks
- **Incorporates advanced technologies to build global, heterogeneous networks**

IBM Software

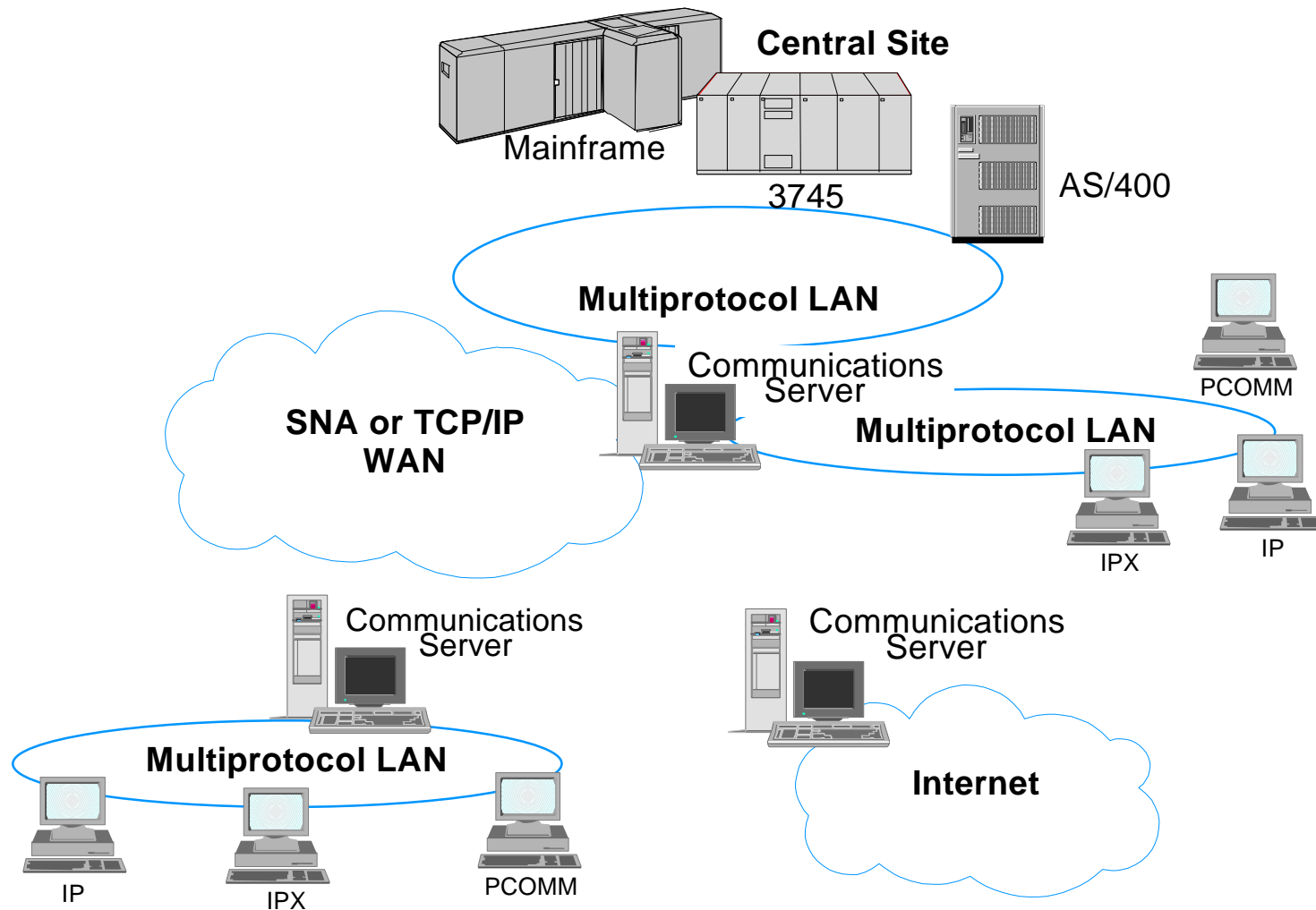
SNA Gateway to Host Applications



The best possible solution for integrating your LANs with your hosts

IBM Software

Multiprotocol Gateway



Advanced Networking function that allows the integration of different network types

IBM Software

Solutions for Network Integration

IBM Software

What kind of customer problems are solved with solutions for network integration?

My company has merged with another company. We both use different protocols.

How can we streamline communications?

Our SNA clients want to build an intranet and also access the Internet

Can we do this?

Users in our branches want to use Lotus Notes to communicate with each other.

Can we do this with an SNA/APPN central site?

We'd like to consolidate to TCP/IP to simplify management, but we have a huge investment in our host SNA database applications.

Can we consolidate but still access our databases?

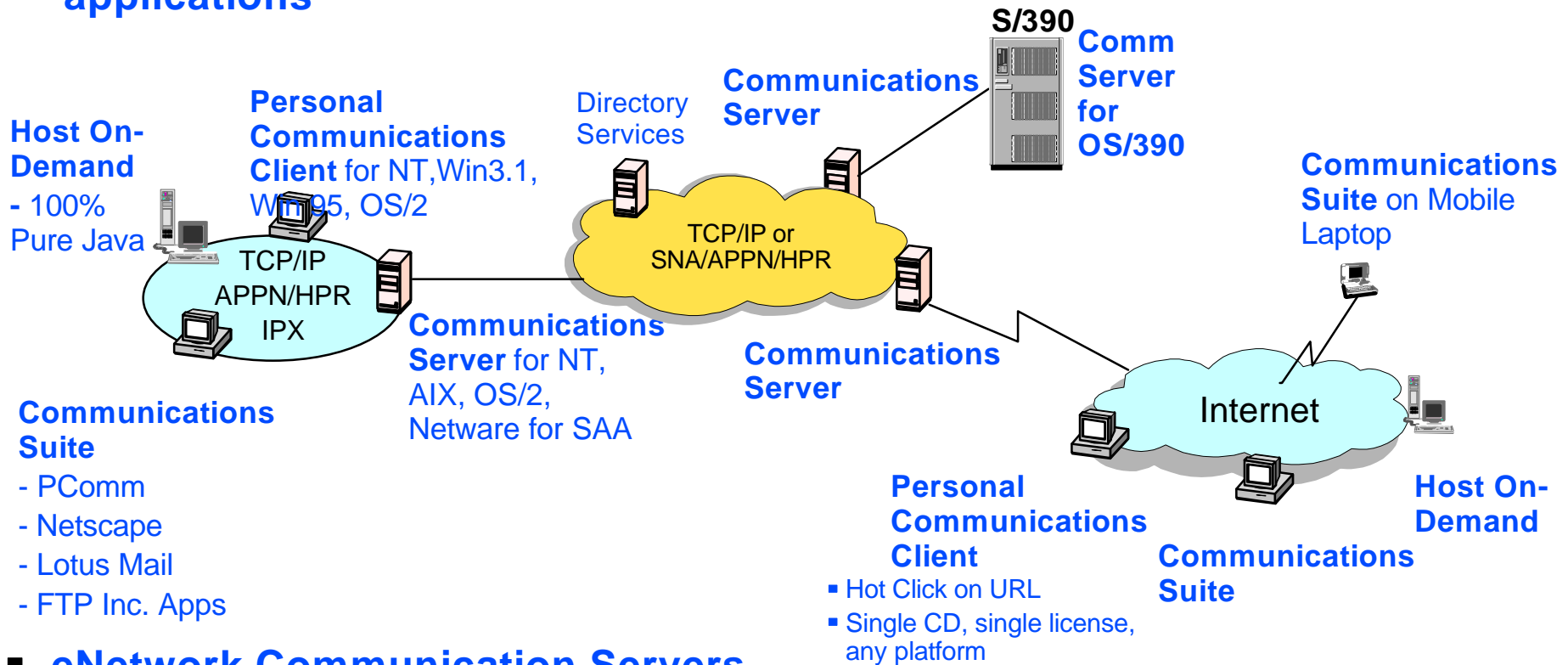
All our retail stores need to access our central site financial systems. We'd like to use SAP R/3 but

Can it be deployed in our SNA backbone environment?

IBM Software

eNetwork Communications Client/Server Solutions

eNetwork provides an extended enterprise network for e-business applications



■ eNetwork Communication Servers

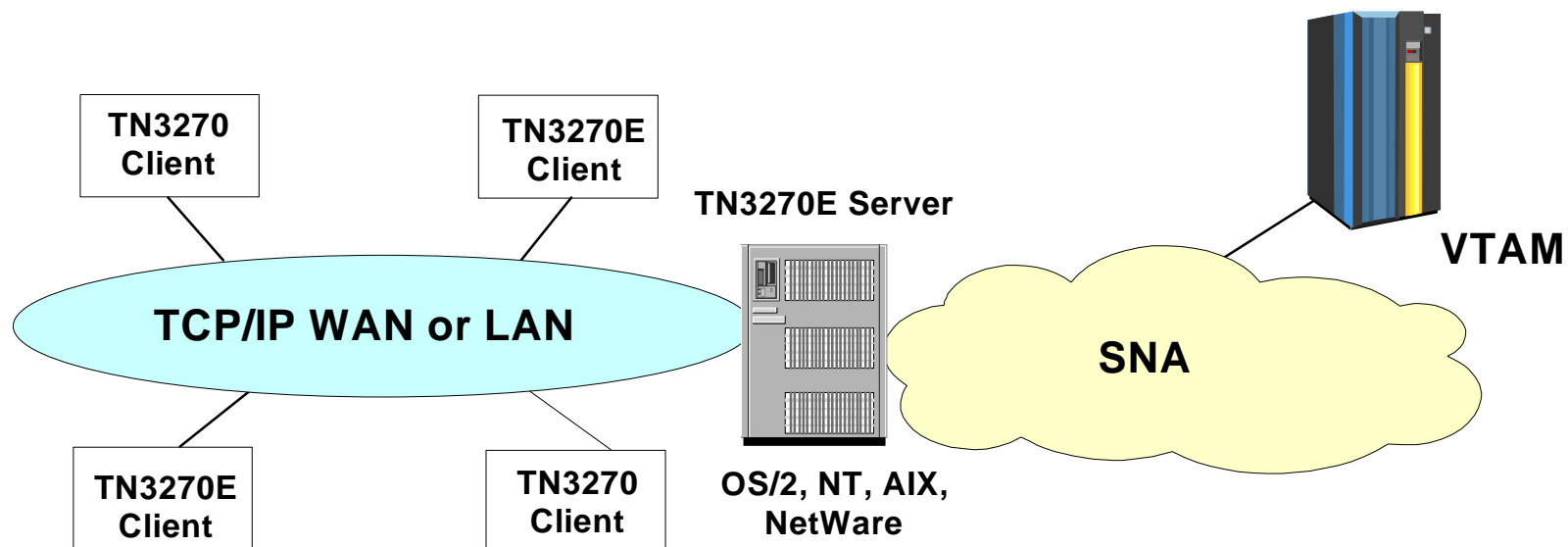
- The best gateway solution for LAN, Internet and intranet to host access and network integration across dissimilar operating systems and networks with the highest scalability and reliability

■ eNetwork Communication Clients

- The best solution for standardized client access to host data and applications, Internet and intranet access, Lotus Mail and TCP/IP networks that reduces cost of installation and support

IBM Software

TN3270E Server



- **Easy access from IP clients to 3270 applications and print services**

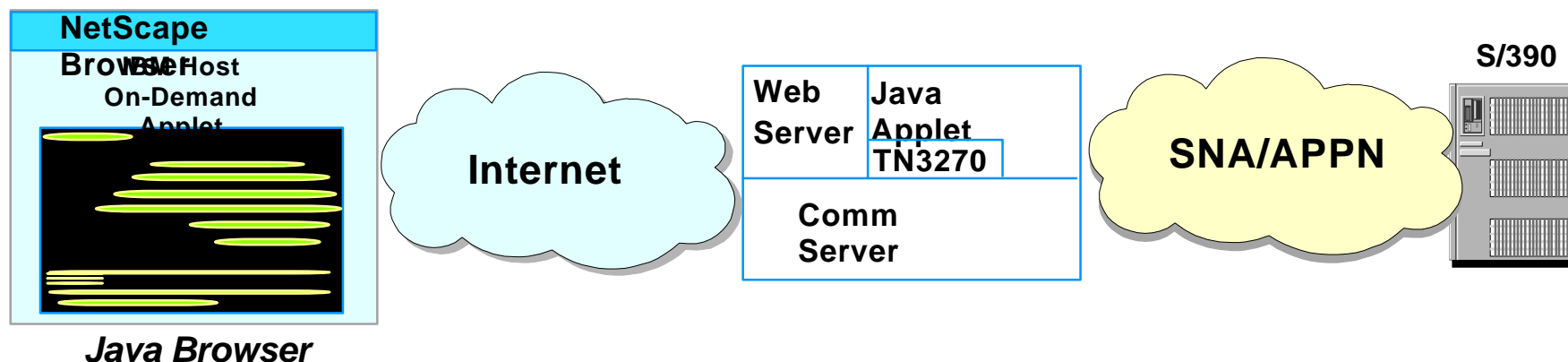
- No IP on host
- No SNA on workstations
- HPR-capable from gateway to host with non-disruptive sessions (CS/2 and CS/NT)

- **Supports traditional TN3270, RFC1646, RFC1647**

- LU1, LU2, and LU3 devices
- LU name assignment
- Print services
- ATTN, SYSREQ keys
- SNA response handling

- **Placed in remote branches or channel attached (not on ~~OS/2~~ *IBM Software*)**

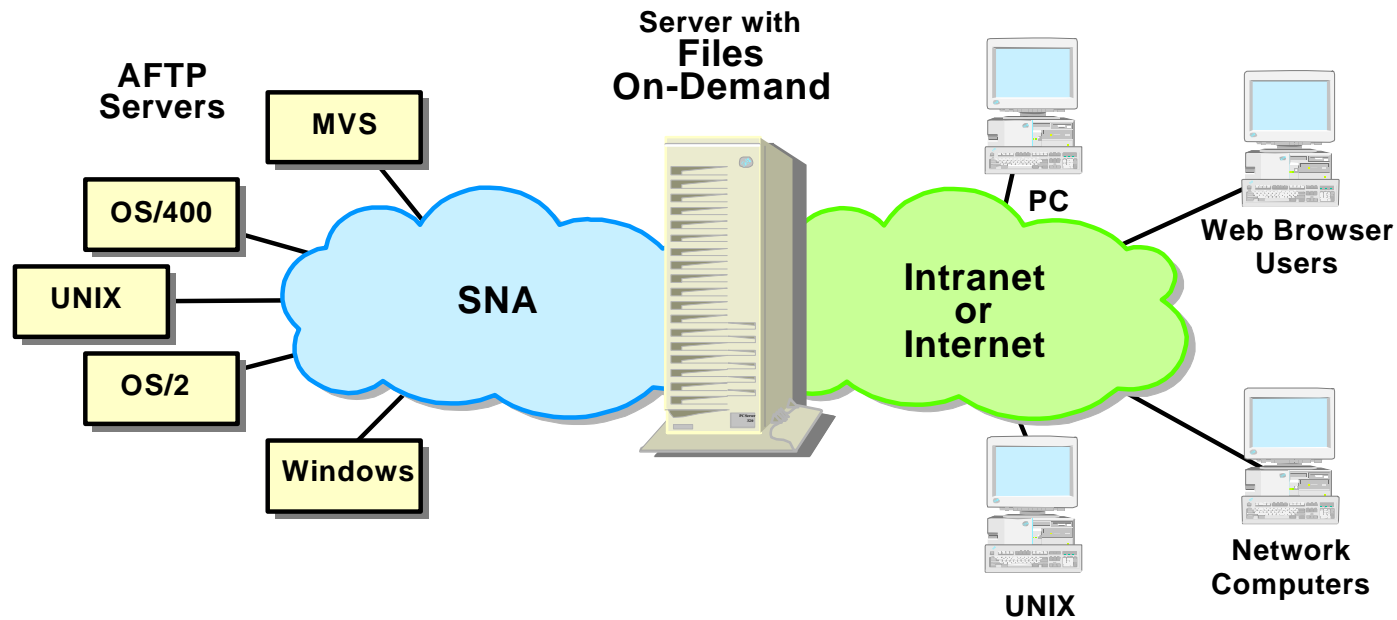
Host On-Demand - Web-to-host Solution



- Provides fast and easy access to host 3270 SNA applications from intranets and Internet
- Java-based solution that uses TN3270 protocols
- Provides high-performance, low-cost solution for intranet and Web users who need occasional access to central site applications or databases
- Available for:
 - CS/2 , CS/AIX 4.2, NetWare for SAA V2.2, CS/NT, CS/MVS
- http://www.raleigh.ibm.com/hex/hexprod_en.html
- Host On-Demand client software in Netscape Communicator Professional Edition

IBM Software

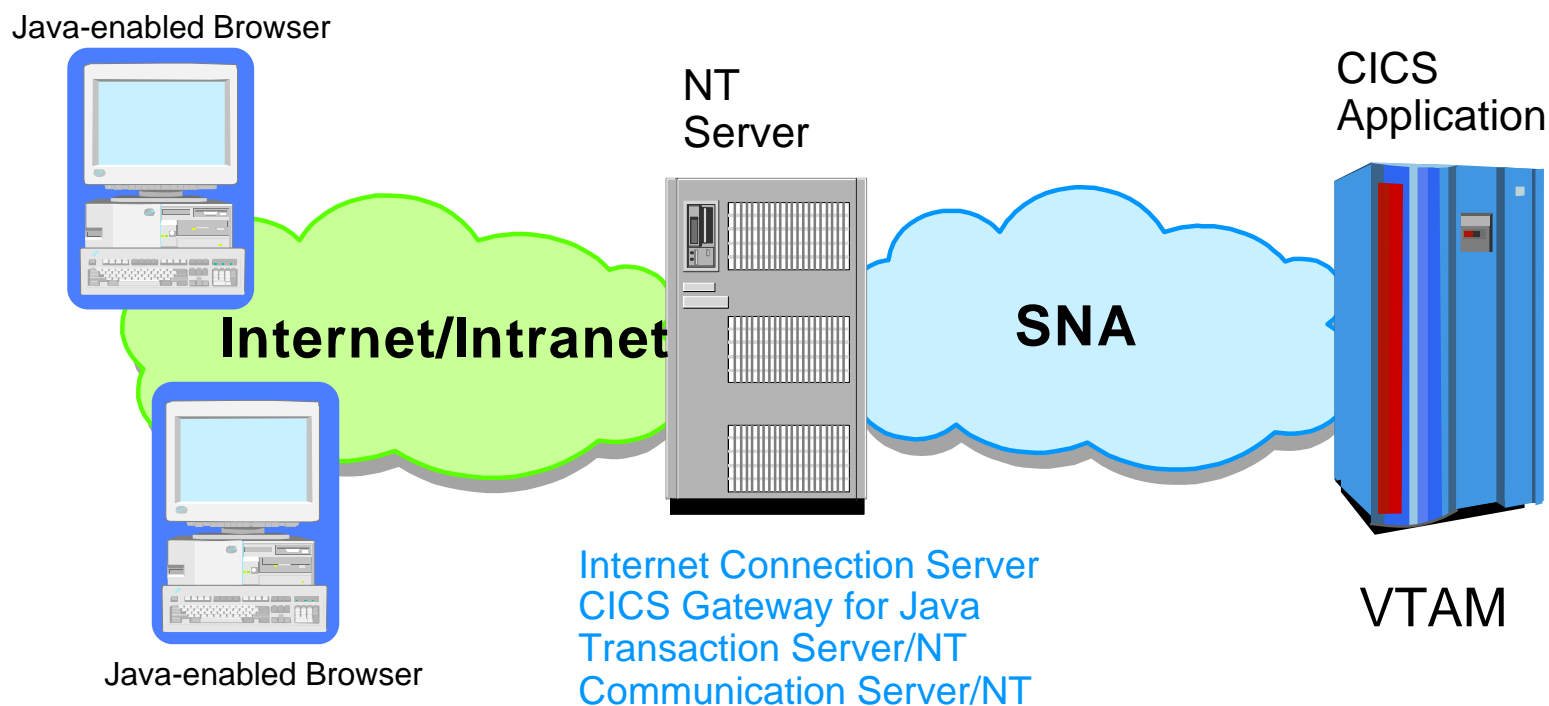
IBM eNetwork Files On-Demand - New!



- Provides fast and easy access to SNA host files from intranets and Internet
- Intuitive access for Web-based users
 - File server platform and protocols are transparent to the end user
 - Optional Java applet provides additional flexibility
 - Directory listings from FTP or AFTP servers
- Initial availability for NetWare for SAA 2.2
 - Other server platforms to follow

IBM Software

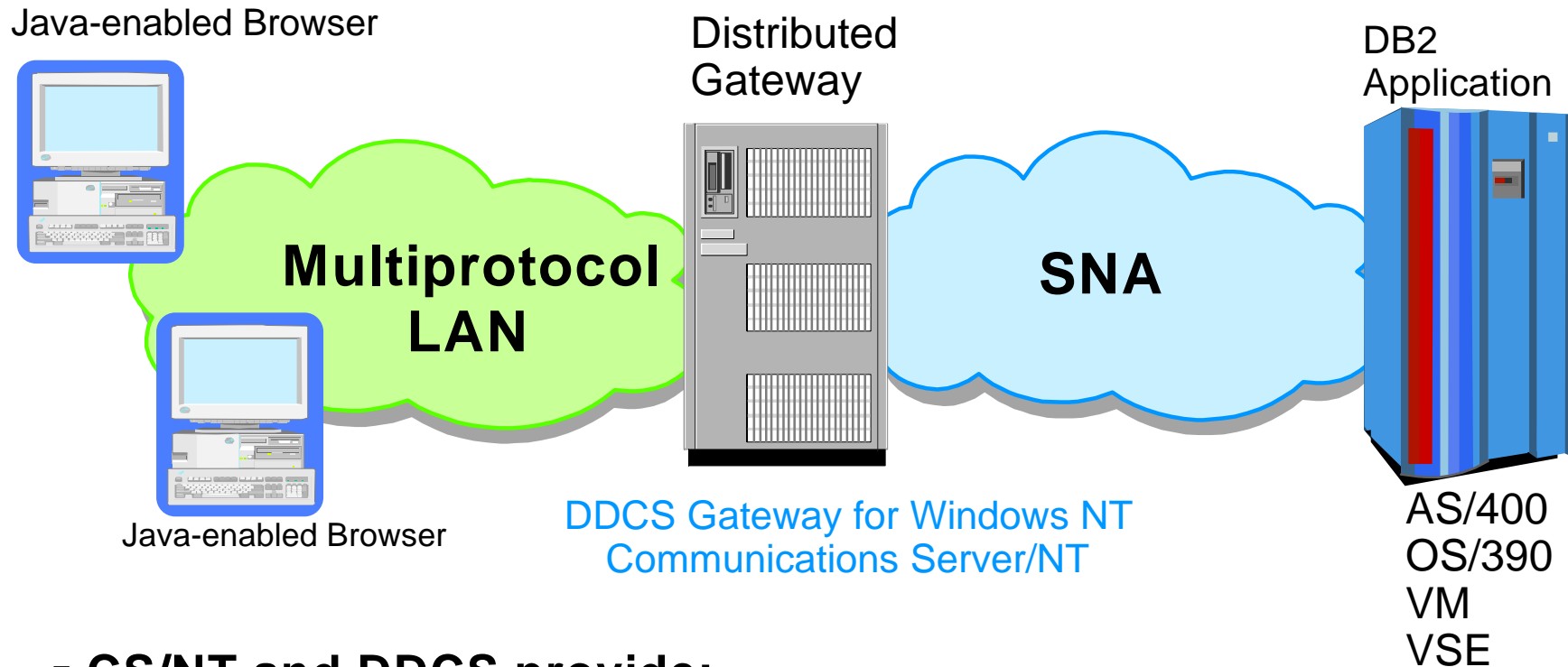
Web Access to Legacy CICS Data



- **Existing CICS applications on mainframes or other servers can be accessed from web browser with no change to CICS 3270 applications**
- **Internet becomes extension of your enterprise**

IBM Software

Client Access to host DB2 Databases

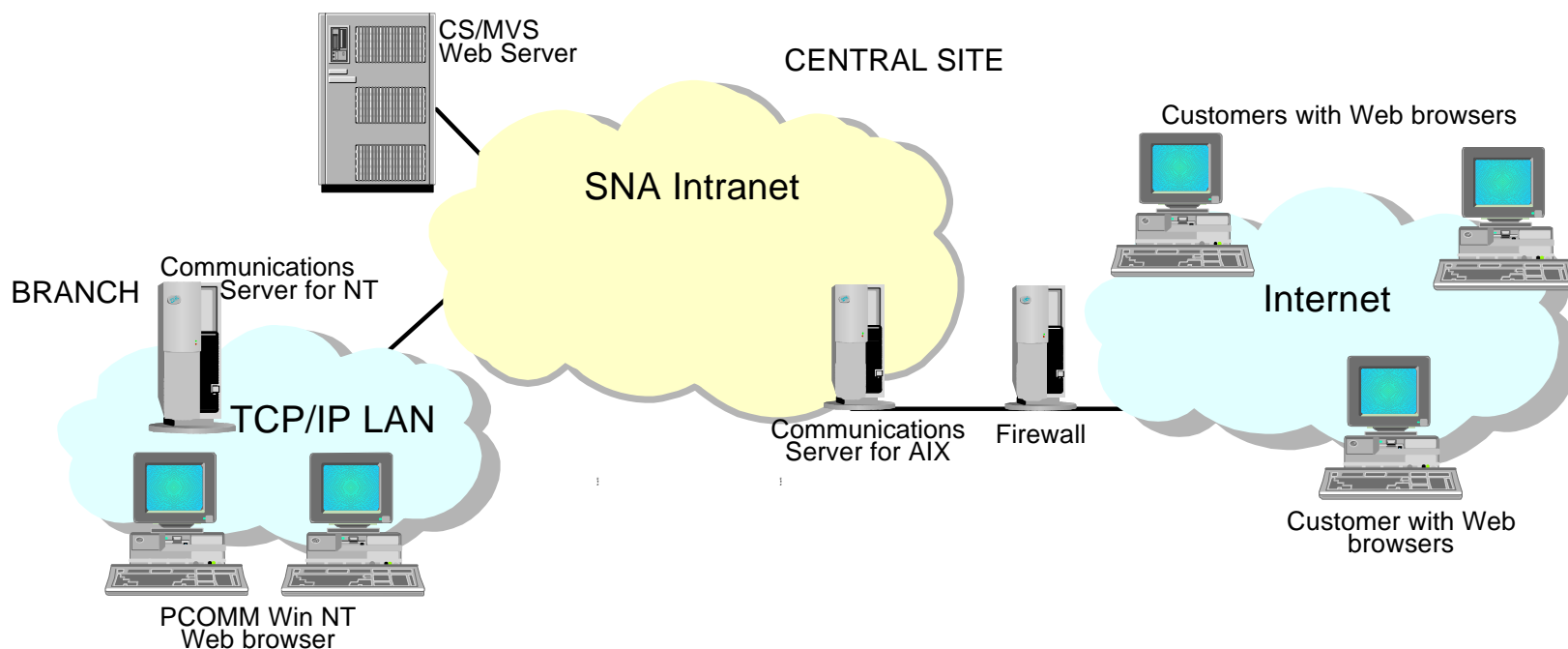


- **CS/NT and DDCS provide:**

- Best combination of services for PC and UNIX client connections to DB2
- Best offering for customers implementing a replicated branch office, departmental data mart, or a Web application delivering both host data and multimedia content
- Indispensable foundation to insurance, retail, banking and health care industry solutions with data distributed across a mixture of hardware platforms queried from distributed sites

IBM Software

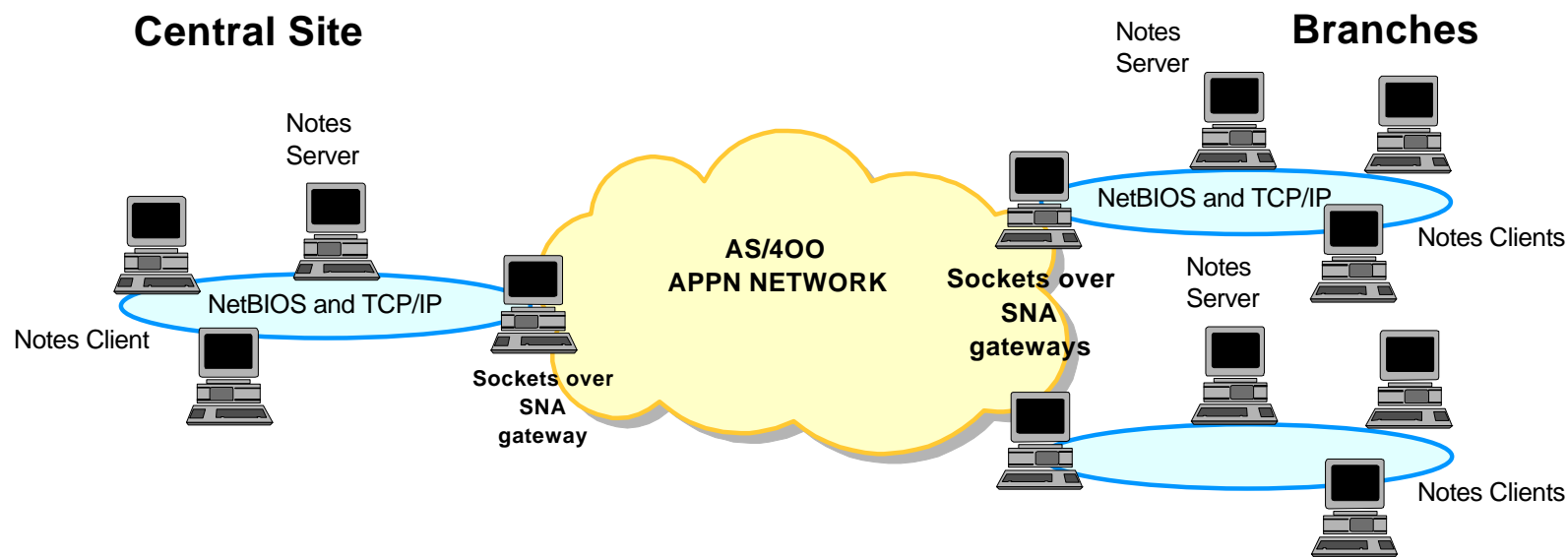
Transportation Industry - Internet/ intranet access using SNA



- **Environment:** Documentation distributed on paper, Customers call service reps to make reservations, Reps at branches use PCOMM and CS/2 to access central site S/390 reservations systems
- **Requirement:** Efficiently distribute documentation to reps
Reduce transaction time
Non-disruptive solution
- **Solution:** Use CS/MVS as Web server. Branch CS/NTs enable intranet access. New central site Comm Server allows customers to access pricing information
- **Benefits:** No major networking changes, productivity savings from intranet document distribution
- **Brochure:** G325-5102-01: Use your SNA or APPN network for Internet or intranet access
- **URL:** <http://www.raleigh.ibm.com/any/anynew.html>

IBM Software

Lotus Notes over APPN



Companies: Ricohtechononet in Japan
Zahid Tractors and Heavy Machinery Company, Ltd. in Saudi Arabia

Environment: Enterprise wide SNA network

Requirement: Replication between Lotus Notes servers between branches using existing SNA network with no impact to existing WAN traffic

Solution: Branch LAN interconnection using Sockets over SNA gateways in Communications Server for OS/2 Warp. #BATCH class of service used for Notes traffic so 5250 traffic is not impacted

Benefits: Freedom to use TCP/IP-based Internet applications while benefitting from SNA/APPN bandwidth utilization, traffic prioritization, etc.
No need to upgrade or disrupt existing network

Application briefs:
G325-3717 - Ricohtechononet
G325-3648 - Zahid Tractor

URL: <http://www.software.ibm.com/is/sw-servers/communications/cmssuc03.htm>

IBM Software

Customer Quotes

"With Communications Server, we are able to run new network computing applications, such as Lotus Notes, on our existing SNA network, reducing the need to implement parallel networks to run applications of different types"

*Masahiro Morinaga, Group Leader
Information System Promoting Division
Ricohtechononet*

"By simply deploying a few OS/2 gateways with Sockets over SNA multiprotocol function, we Internet enabled our whole SNA community."

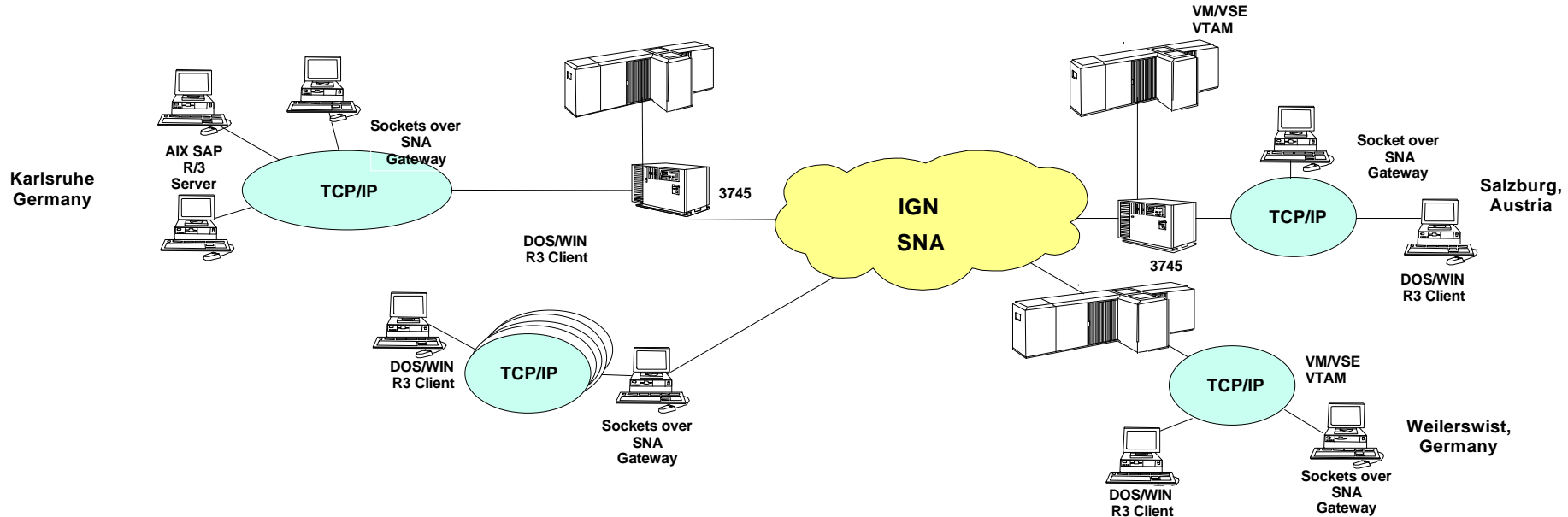
*Muhammad Farooq, Technical Support Manager
Zahid Tractors*

"I am particularly pleased that IBM can add multiprotocol function to our SNA network in such a non-disruptive manner. We were able to implement the Sockets over SNA gateway software solution within normal business hours without any interruptions to our user community."

*Graham Ferguson, Technology Manager
Zahid Tractors and Heavy Machinery*

IBM Software

Customer Scenario - Filiadata: SAP R/3 over SNA



Application brief: G325-3624

Company: Filiadata, computer service center of Drogeriemarket in Germany

Environment: IP-based operations in various locations in Austria, Germany, and Hungary

Requirement: Enable access to SAP R/3 server in Karlsruhe from SAP R/3 clients in numerous remote IP offices

Solution: Paired Sockets over SNA Gateways (available in Communications Server for OS/2 Warp) to connect remote store over IBM Global Network to SAP R/3 server site

Benefits: Clients on IP LANs can access SAP R/3 server over IGN
Traffic prioritization for SAP R/3

IBM Software

Customer Quotes

"IBM's solution gave us the ability we needed to make the application decisions independently from existing network protocols so we could install SAP R/3."

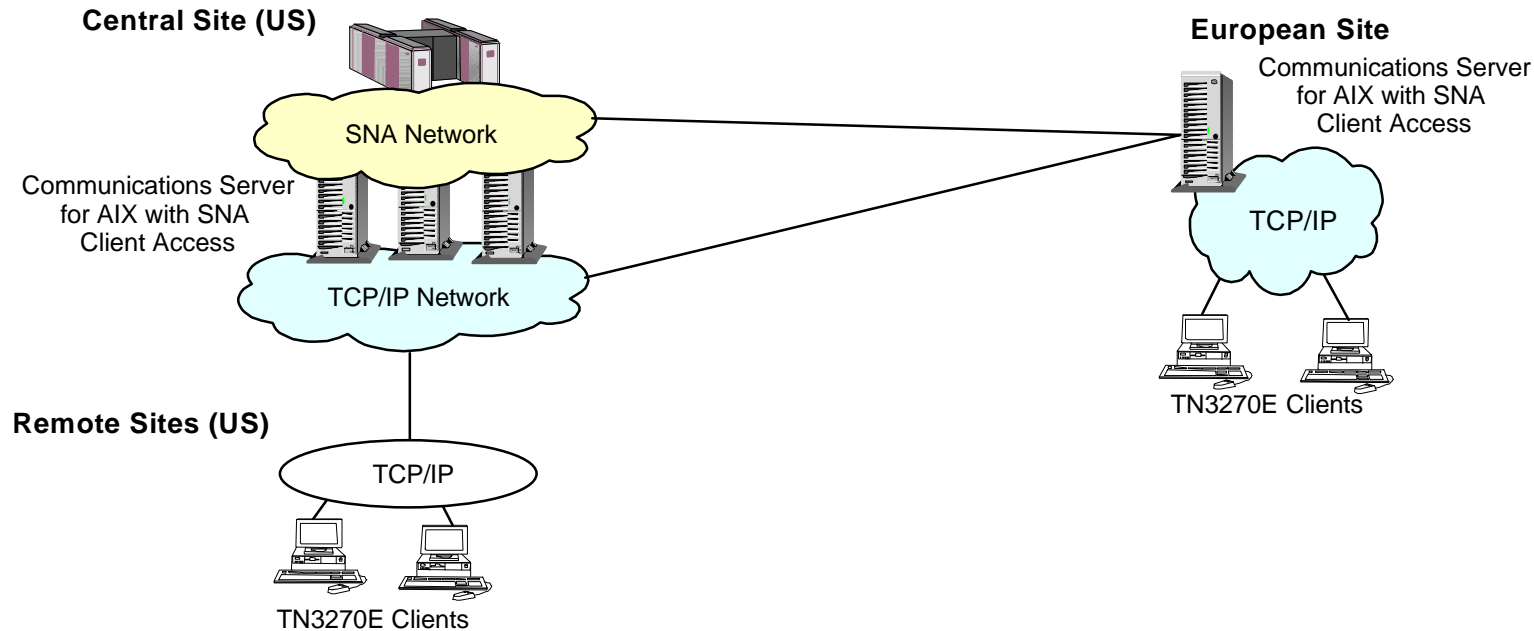
*Mr. Mueller, Network Administrator
Filiadata*

"We are very satisfied with the response time and throughput of running SAP R/3 over SNA. Users at our store locations are taking advantage of the ability to use SNA's class of service (COS) for TCP/IP traffic prioritization."

*Mr. Roman Melcher, Department Manager,
Production Systems
Filiadata*

IBM Software

TN3270E - Manufacturing Industry



Company: Automobile manufacturer

Environment: US SNA-based central site. Multiple TCP/IP based US and European sites

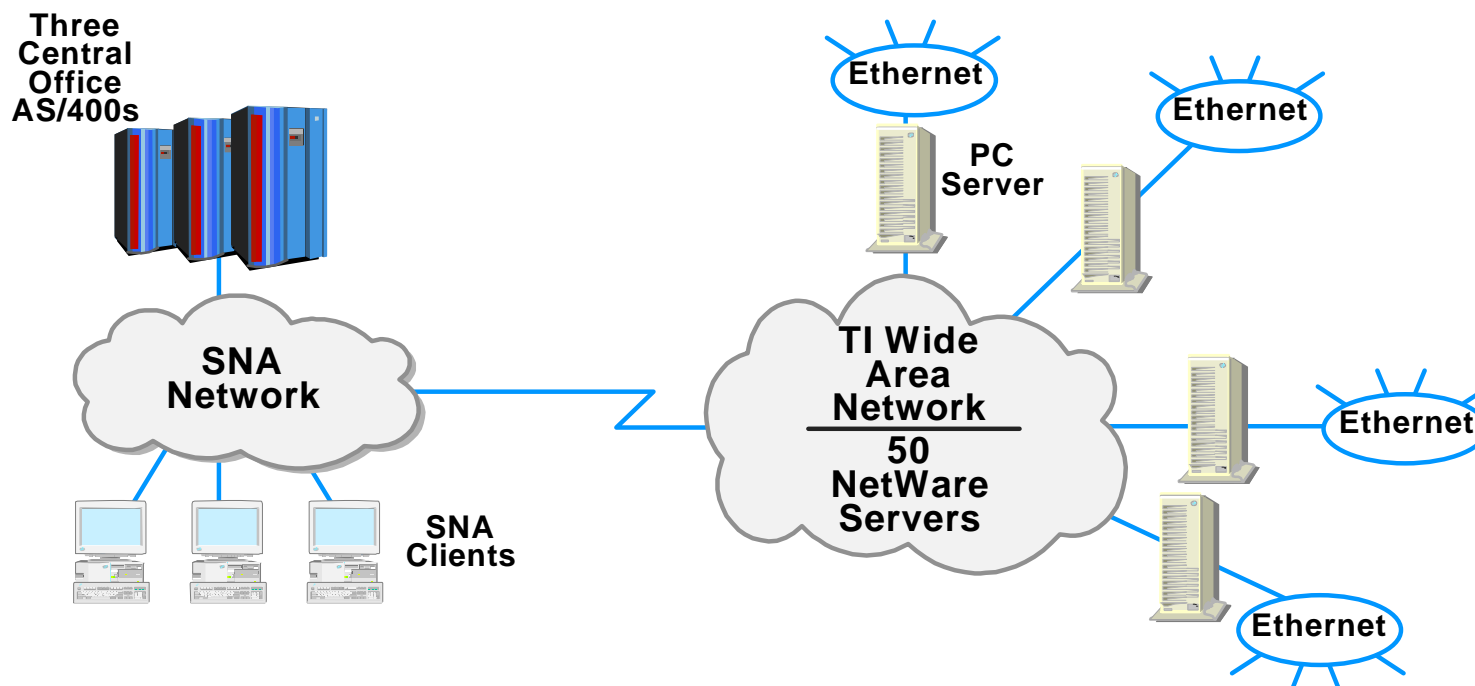
Requirement: Support 30,000 TN3270E users who need access to central site SNA applications and data. Provide scalable solution, load balancing, and TN3270E at every user workstation.

Solution: TN3270E server (SNA Client Access) processing distributed among 4 RS/6000s. PCOMM on workstations provides TN3270E.

Benefits: High availability, fault resiliency, painless scalability

IBM Software

LAN-Host Integration - Construction Industry



Company: Del Webb Corp., a nationwide construction management company

Environment: 2000 internal users on NetWare LANs need access to AS/400 applications and data

Requirement: The company tripled in size in the last three years and growth has caused IS management to look for simple, reliable integration of AS/400 and NetWare LAN without major expenditure. Goal was to provide timely and accurate reports to field managers and reduce shipping costs for paper reports

Solution: NetWare for SAA: AS/400 Edition provides users, both mobile and office bound, with simple access to business-critical AS/400 applications

Benefits: Leverages investment in existing LAN and AS/400 technology with little incremental cost

IBM Software

Customer Quotes - Del Webb Corp.

"We built 12,000 homes with Novell (NetWare for SAA)"

"Confidence was so high that we put our entire company over on NetWare for SAA and all connect to the AS/400"

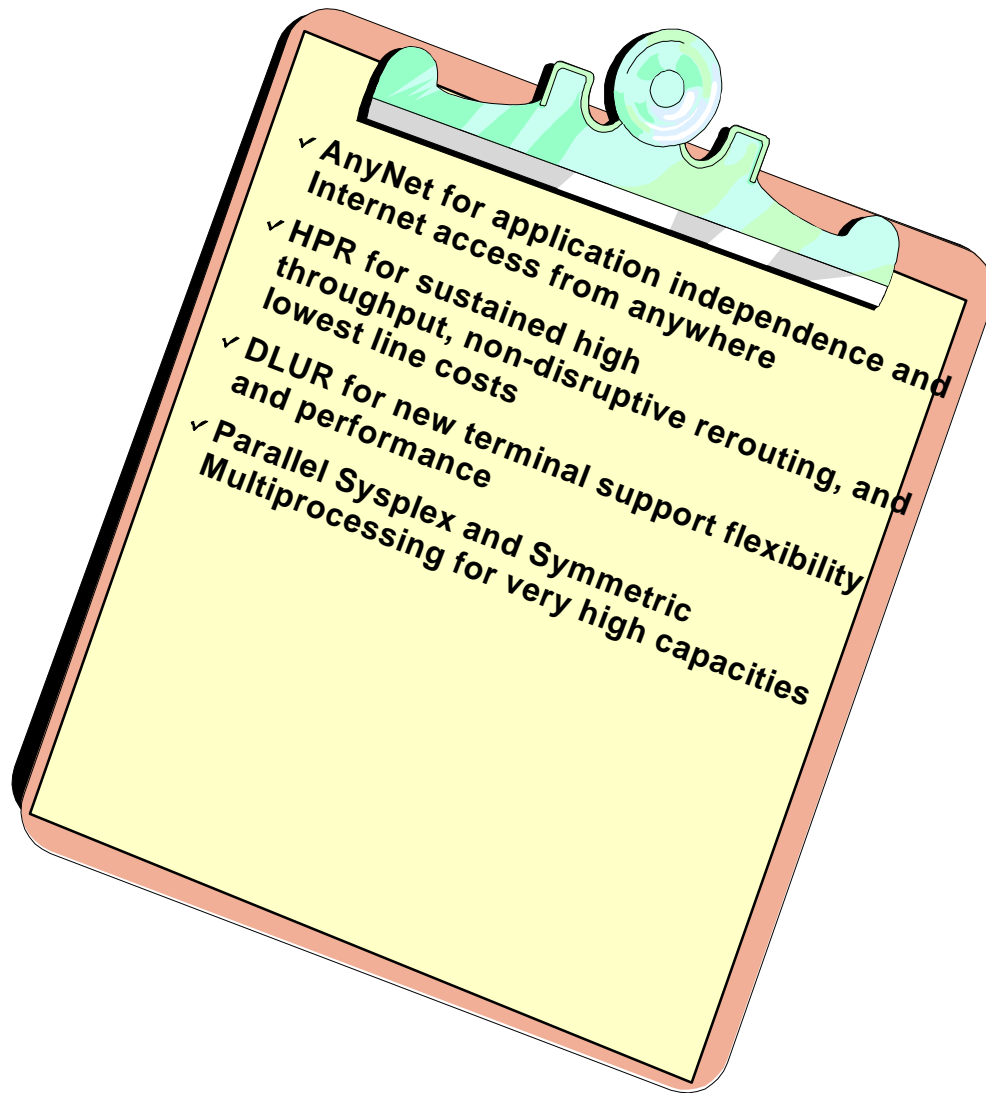
*Ross Skinner
Manager of IS and Infrastructure
Del Webb Corp.*

IBM Software

Advanced Technologies

IBM Software

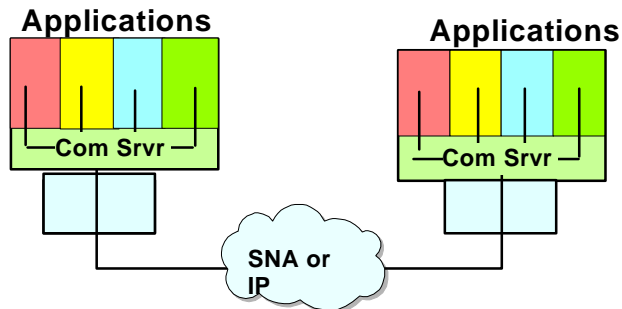
Built on Advanced Technologies



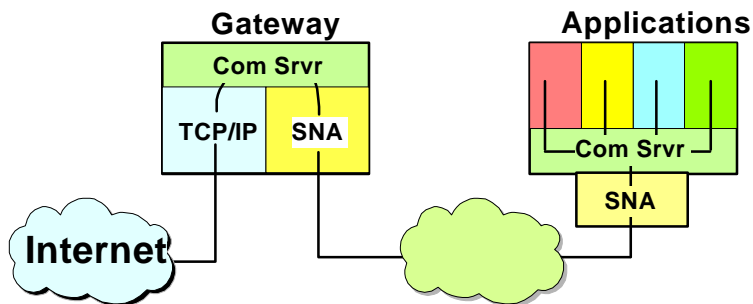
- **Allows rapid deployment of advanced business and consumer applications without disrupting existing applications**
- **Supports new users, applications, and mix of TCP/IP and SNA communications without disruptive network upgrades**
- **Provides higher reliability and availability**
- **Simplifies design, installation, and operations**

IBM Software

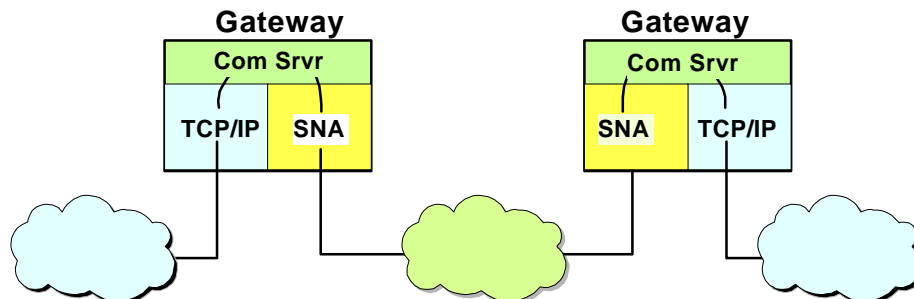
Advanced Multiprotocol Support



Supports nonnative application



Joins 2 unlike networks



Joins two like networks with unlike backbone

- **Simplifies application selection, network design, and operation**
 - e.g. Internet access from SNA and IP
- **Expands application scope and gives end users broader choice of applications**
- **Enhances existing router and controller networks**
- **Award-winning, standards-based, software solution**
 - Compensates for differences in protocols
 - Solutions for SNA, TCP/IP (sockets), NetBIOS, and IPX

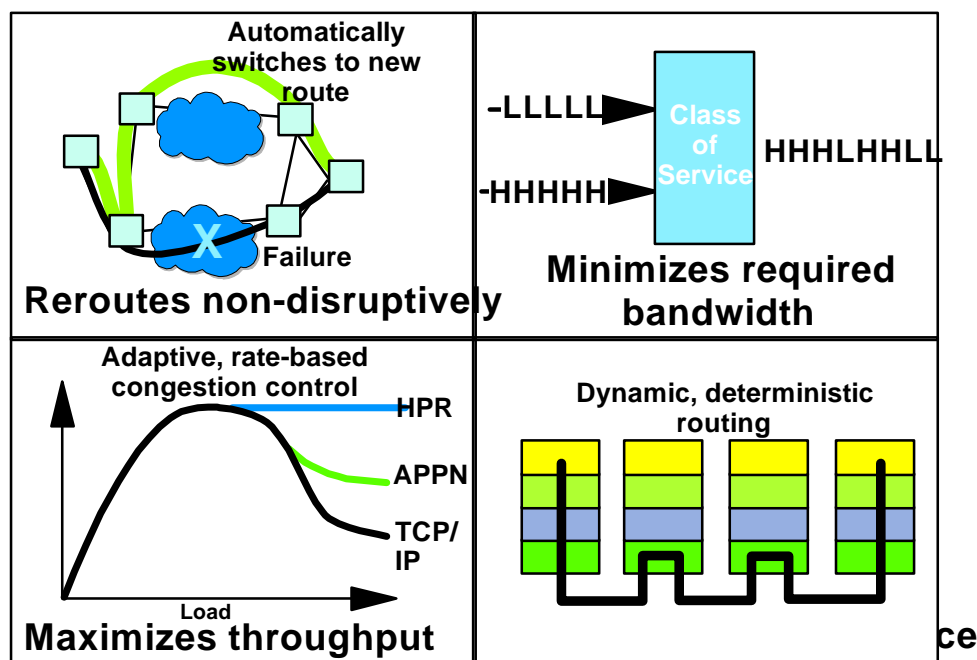


Data Comm
MAGAZINE

Hot
Products

IBM Software

High Performance Routing



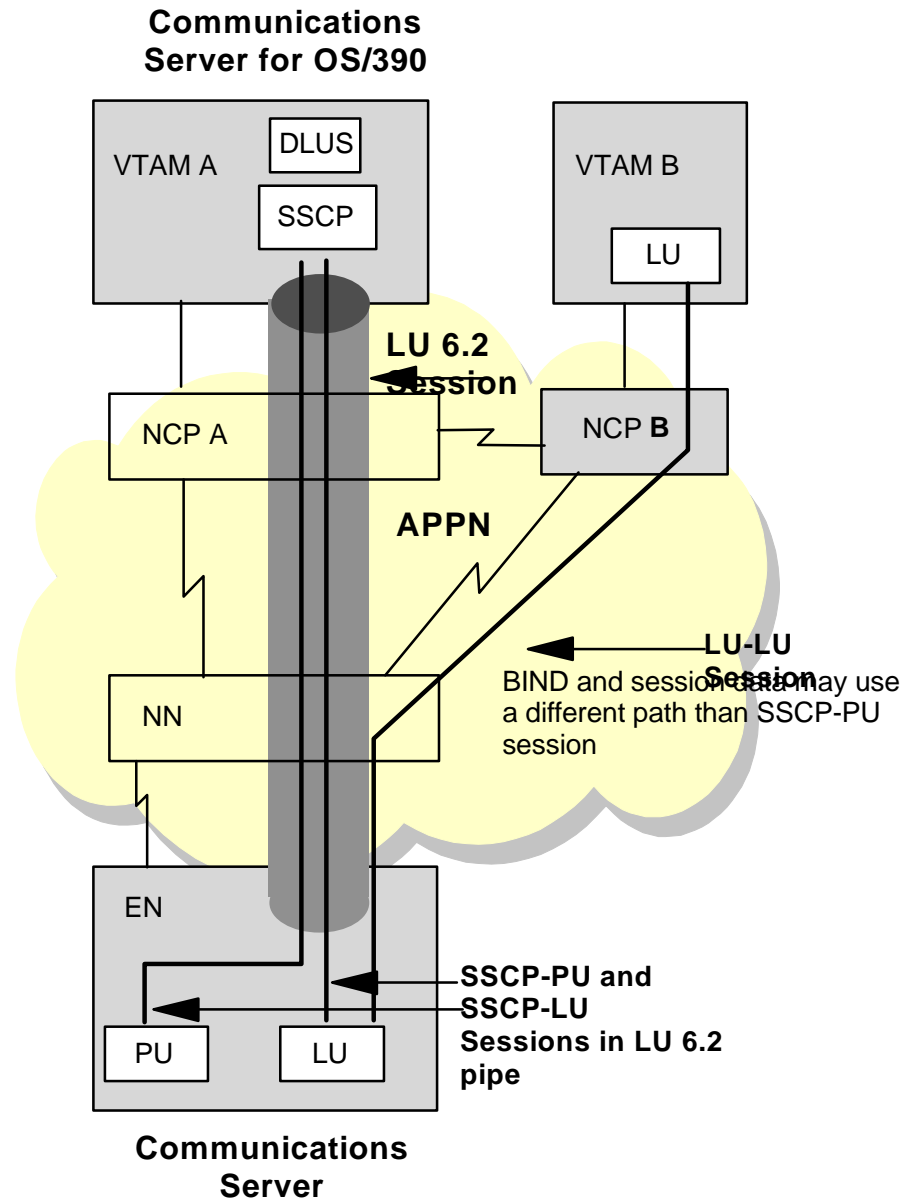
- Improves network service and saves money
- Enhances the best qualities of SNA and TCP/IP
 - Prepares SNA for high-speed, switched networking
 - Dynamic resource registration identifies changes automatically
 - Maximizes link utilization, even under load
 - Automatically reroutes around failures
 - Minimizes bandwidth and improves performance
- Ready for switched networks and ATM
 - Endorsed by Cisco, Bay Networks, 3Com
 - Selected for SNA over ATM by 41-vendor APPN Implementor's Workgroup (AIW)

HPR is the most efficient and highest level of the protocol stacks"

Frank Dzubeck, LAN Times, 18 March 1996

IBM Software

Dependent LU Requester



- Provides migration strategy for DLU from subarea to APPN
- DLUs can reside on nodes that are non-adjacent to the host
- APPN search logic used to provide the best path for LU-LU sessions
- Network management provided by DLUS and PUs that are not adjacent to SSCP can still be visible to host
- With AnyNet, DLU sessions can be established over TCP/IP
- Backup DLUS support if connection to primary DLUS fails
- Multi-subnet support allows DLUR, DLUS, and application all to be in different subnetworks

IBM Software

Communications Server Family Technology Highlights

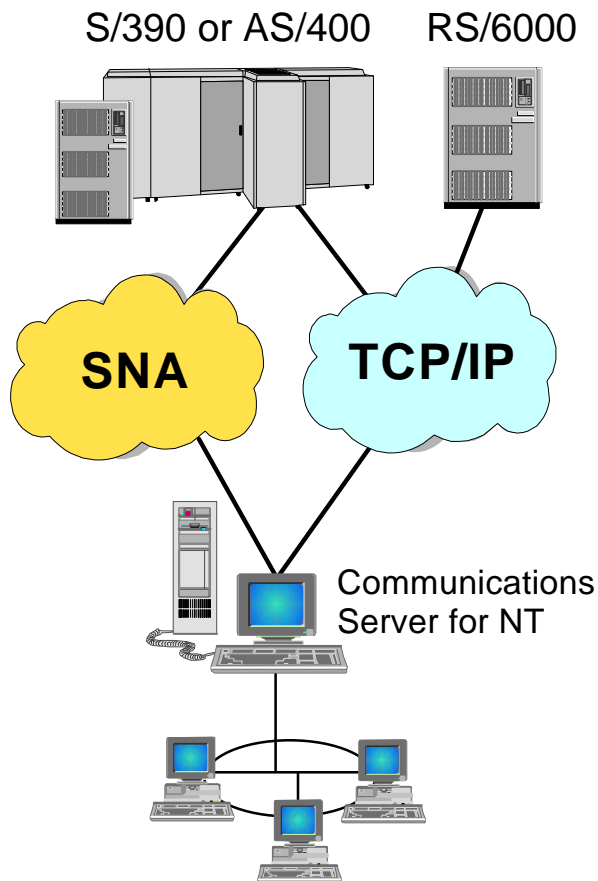
Industry-leading SNA support:	CS/2	CS/NT	CS/AIX	OS/400	NetWare	CS/MVS
3270 SNA gateway	X	X	X	X	X	
APPN EN and NN function	X	X	X	X		X
High Performance routing intermediate routing	X	X	X	X		X
HPR connection endpoint	X	X				X
3270 support over APPN (DLUS/R)	X	X	X			X
Multiprotocol support:						
TN3270E server	X	X	X		X	
TN5250 server			X			
Sockets over SNA access node	X	X	X	X		X
APPC over TCP/IP access node	X	X	X	X		X
SNA over TCP/IP access node	X	X				X
Sockets over SNA gateway	X	X	X		X	
APPC over TCP/IP gateway	X	X	X			X
SNA over TCP/IP gateway	X	X				X
IPX over SNA gateway	X				X	
IPX over TCP/IP gateway	X					
NetBIOS over SNA gateway	X					
NetBIOS over TCP/IP gateway	X					
NetWare Directory Services integration					X	

IBM Software

Platform Overviews

IBM Software

Communications Server for Windows NT



Enterprise-Class - Advanced Networking

- Powerful SNA gateway with higher reliability, more concurrent sessions with higher performance than competitive products

End to End Universal Access

- SNA applications over TCP/IP and IPX/SPX
- TCP/IP Sockets applications over SNA for Internet/Intranet access
- TN3270E Server for TCP/IP client access to 3270 apps and print
- Comprehensive client support: Win 3.1, 95, NT, and OS/2
- Broad Range of Connectivity options: Ethernet, Token Ring, FDDI, ISDN, SDLC, X.25, Frame Relay, channel attach
- Host On-Demand Internet to 3270 app access for Web users

Easy to Use, Configure, Develop, Support

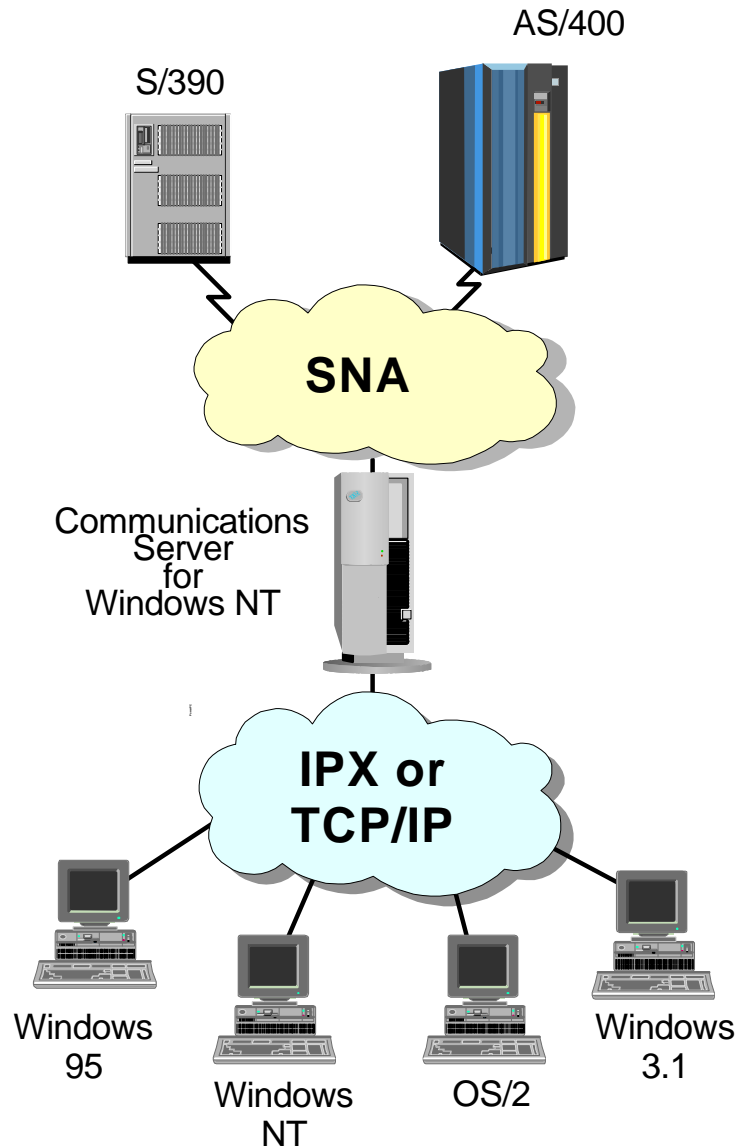
- Rich set of APIs
- Tools and tutorials for simplified configuration and systems management
- Web-based server administration with easy-to-use graphical interface

Effective Utilization of Network

- High Performance Routing (HPR) maximizes throughput and minimizes response times
- Dependent LU Requester (DLUR) support for APPN
- Efficient use of network with assigned priorities to differing transmissions
- Data Compression reduces costs and achieves faster transmission speeds over existing links

IBM Software

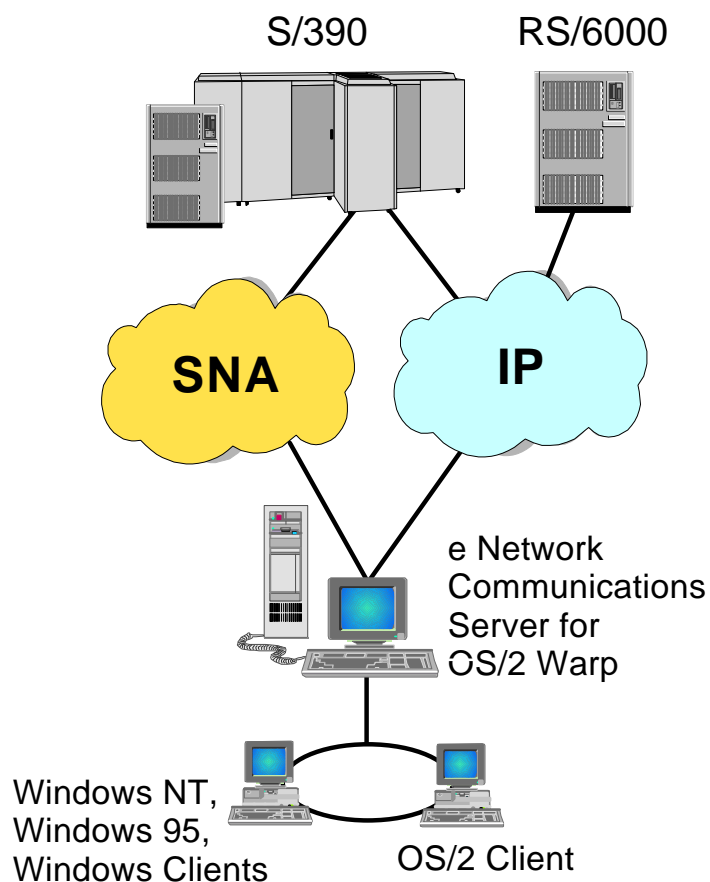
CS/NT Remote API Client Support (Split Stack)



- Allows TCP/IP attached clients to access SNA APIs without SNA protocol
- Supports the following clients
 - Windows NT
 - Windows 95
 - Windows 3.1 (TCP/IP only)
 - OS/2 (TCP/IP only)
- Clients provide API support for
 - CPI-C APPC
 - EHNAPPC
 - LUA RUI
- Clients shipped with server
- Client requires less storage and processing capability

IBM Software

eNetwork Communications Server for OS/2 Warp



Enterprise-Class advanced Networking

- Up to 20,000 sessions
- High-speed links up to 2.0 Mbps
- HPR/APPN

End-to End Universal Access

- SNA applications over TCP/IP networks
- OS/2, Windows, Windows NT and Windows 95 access features
- TN3270E Server
- Broad range of Connectivity options; Ethernet, Token Ring, FDDI, ATM (LAN Emulation), ISDN, SDLC, X.25, Frame Relay
- Host On-Demand Internet to 3270 application access for Web users

Easy implementation and Use

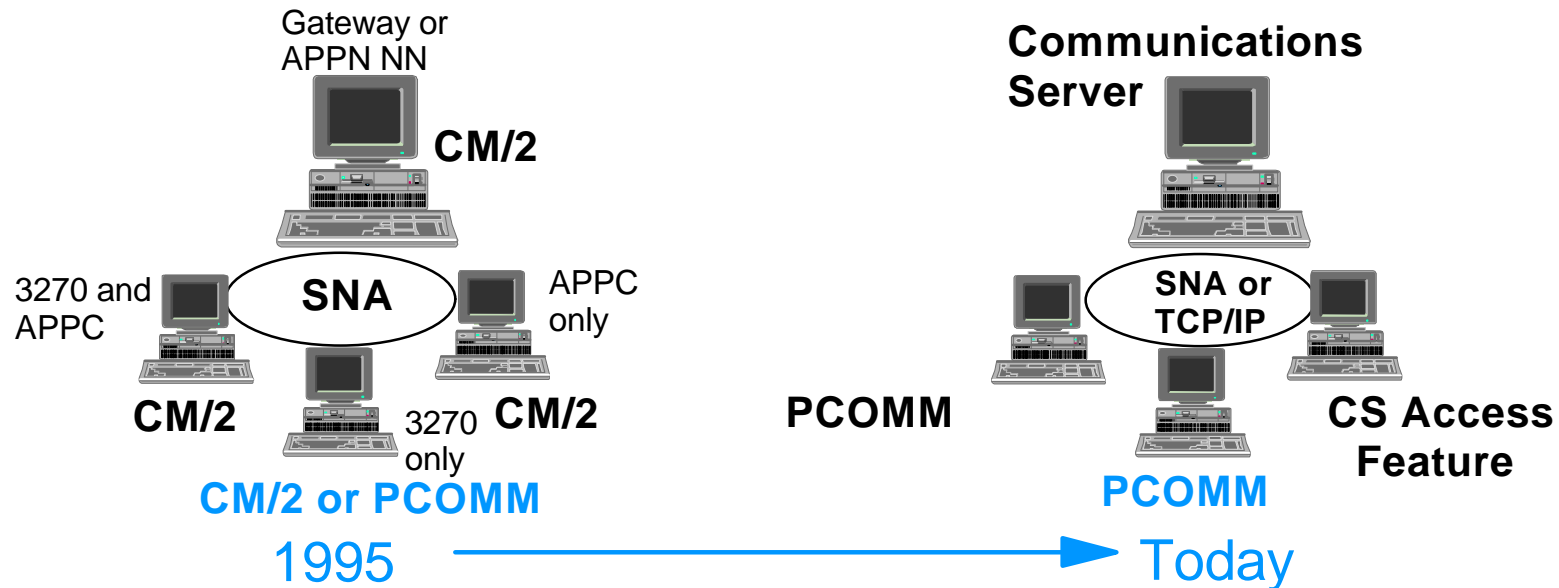
- Remote Web-based server administration
- Rich set of APIs

Effective Network Utilization

- Dependent LU Requester (DLUR)
- HPR multi-link transmission group support
- Branch extender

IBM Software

Communications Server for OS/2 Warp



■ Server is multifunction gateway

- Much more than simple CM/2 repackage
- One time charge; no per-seat or per-session charges
- Continued gateway support for OS/2, DOS, Windows, Windows 95, Windows NT, NetWare for SAA gateway, etc.

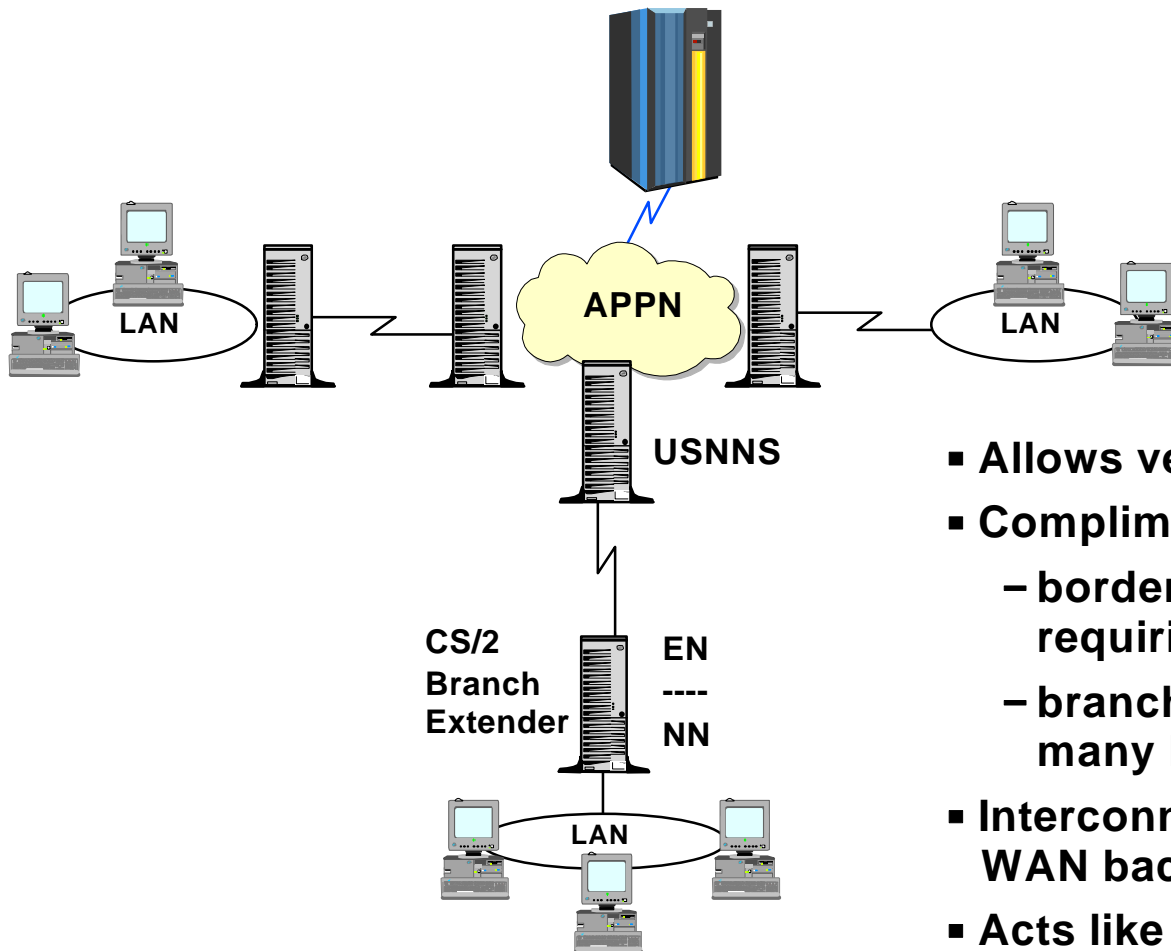
■ OS/2 and Windows Access Features included

- Optionally installable; separately priced
- OS/2: APIs, LAN and WAN connectivity, multiprotocol support
- Windows: APPC APIs and APPC multiprotocol support

■ PCOMM clients available separately

IBM Software

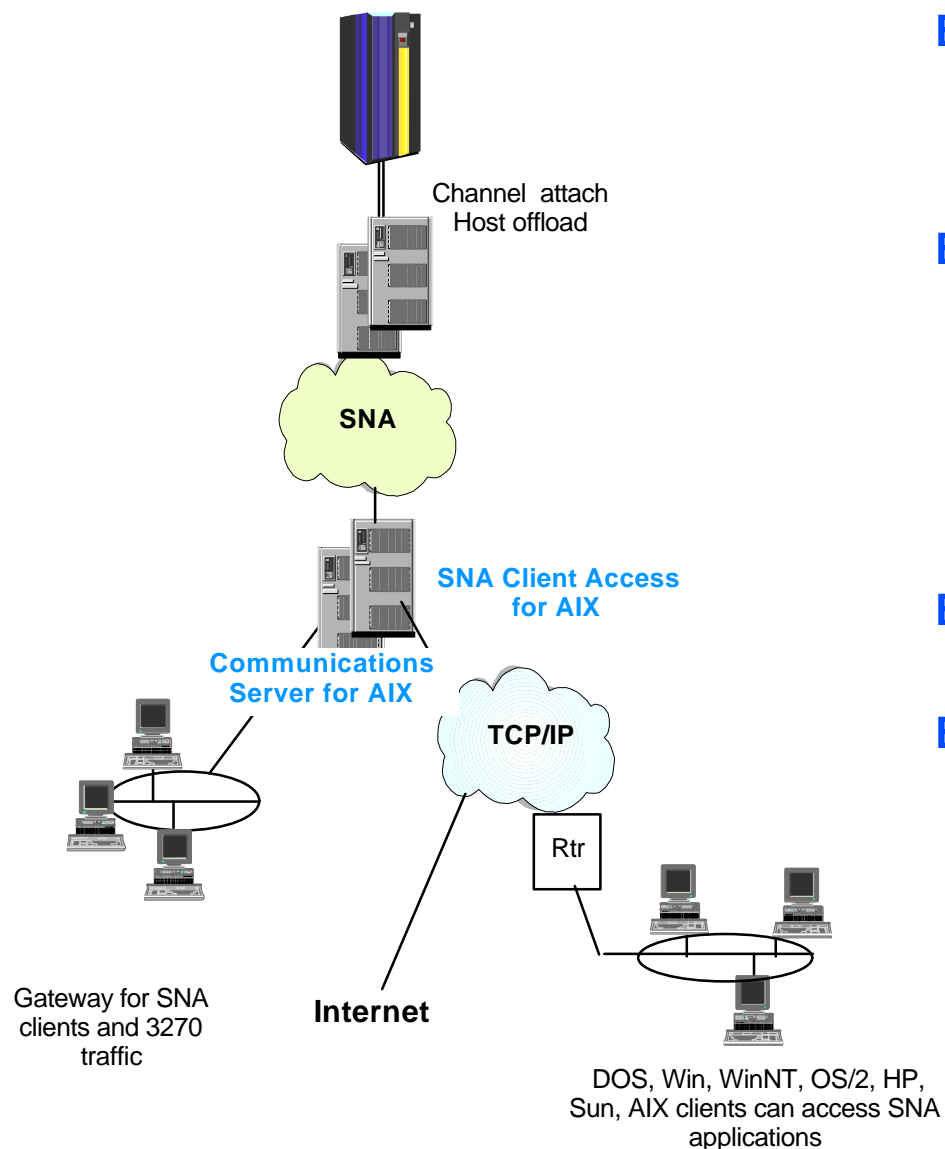
CS/2 Branch Extender for Large APPN Networks



- Allows very large APPN networks
- Complimentary to border node:
 - border node for large **internets** requiring security, accounting
 - branch extender for large **intranets** with many branches
- Interconnects branch offices to APPN WAN backbone
- Acts like an EN to APPN backbone
- Acts like a NN server to LAN workstations
- Hides branch topology from WAN reducing WAN traffic

IBM Software

eNetwork Communications Server for AIX



Enterprise-Class Reliability

- Very high capacity, reliability and managability
- Offload TN3270 and TN5250 from mainframe
- SMP efficient

End to End Universal Access

- TCP/IP applications over SNA networks and vice-versa
- Internet access for SNA users
- Broad range of connectivity options including channel
- Large numbers of clients
- TN3270, TN3270E, TN5250 emulators
- APPN including network node and subareas
- Host On-Demand Internet to 3270 application access for Web users

Easy to Use, Configure, Develop, Support

- Rich set of APIs including APPC, CPI-C, LUO, 1, 2, 3, 6.2

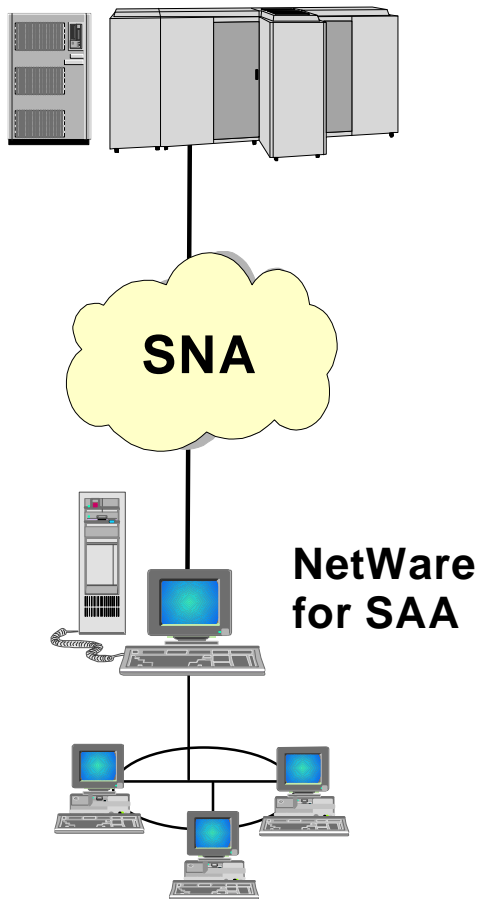
Effective Utilization of Network

- Load balancing across multiple servers to maximize resources
- High Performance Routing (HPR) maximizes throughput and minimizes response times
- Dependent LU Requestor (DLUR) support for APPN
- Expands application usage while utilizing existing infrastructures
- MultiPath Channel Support

IBM Software

IBM and Novell NetWare for SAA

AS/400 or S/390



Enterprise-Class Reliability

- Provides server Hot Standby for S/390 connectivity to ensure maximum availability
- Is a stable product with more years in the marketplace than any other gateway

End to End Universal Access

- Comprehensive client support: DOS, Win 3.1, 95, NT, and OS/2
- Broad Range of Connectivity options: Ethernet, Token Ring, FDDI, ISDN, SDLC, X.25, Frame Relay, and channel attach
- Host On-Demand for Internet-to-SNA connectivity for Web users needing occasional access to 3270 applications and data bases
- Files On-Demand for easy access SNA host files

Easy to Use, Configure

- Installation and Configuration Tools for remote or central site, migration, duplicate server images
- Robust set of API's: CPI-C, APPC, LUA, X.25, and ISDN
- Exploitation of NDS to configure and manage client profiles

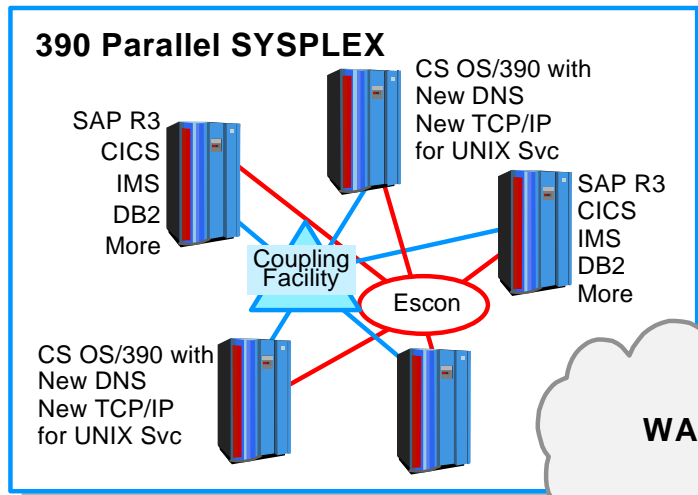
Effective Utilization of Network

- Provides server Load Balancing to maximize resources
- Expands application usage while utilizing existing infrastructures

IBM Software

eNetwork Communications Server for OS/390

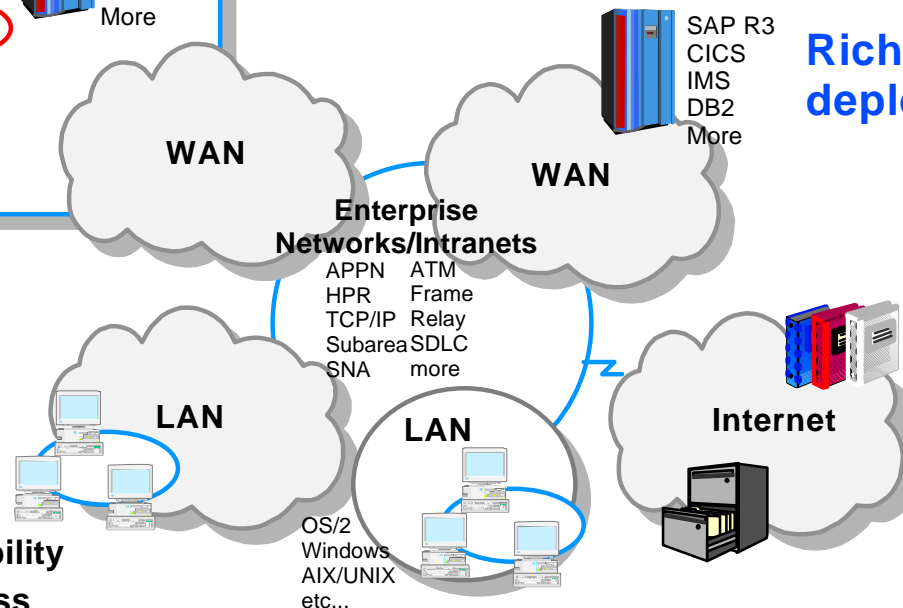
Enterprise Network Computing Over LANs, WANs, Intranets and Internet...



Application choice deployed quickly and economically....

Rich set of APIs for easy deployment of Client/Server...

World-class performance, reliability and availability...



IBM eNetwork Software

- Enterprise-class dependability
- End-to-end universal access
- Easy implementation and use
- Effective utilization of network assets

Investment protection for S/390 applications....

A Powerful Communications Gateway Connecting Diverse Applications and Networking Environments

IBM Software

eNetwork Communications Server for OS/390 V2R4

New TCP/IP stack for UNIX Services

- Performance improved
- Web server increased to 4X connects/second in IBM tests

Easy access to 3270 applications on S/390 from Java enabled Web browsers (available now)

- "Host On-Demand" - click on URL
- Java based TN3270 solution - same security, multiple concurrent session

CICS Sockets Integrated and Improved

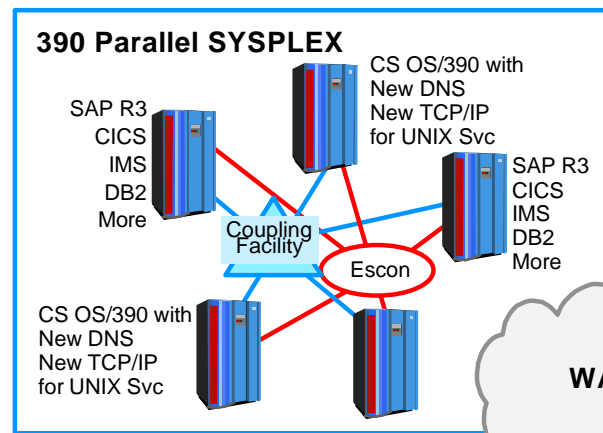
- Integrated into CS OS/390 base
- Improved performance and usability

IMS Sockets Integrated and Improved

- Integrated into CS OS/390 base
- OTMA (shipped) allows IMS application to be accessed from either TCP/IP, 3270 SNA or APPC without change to applications

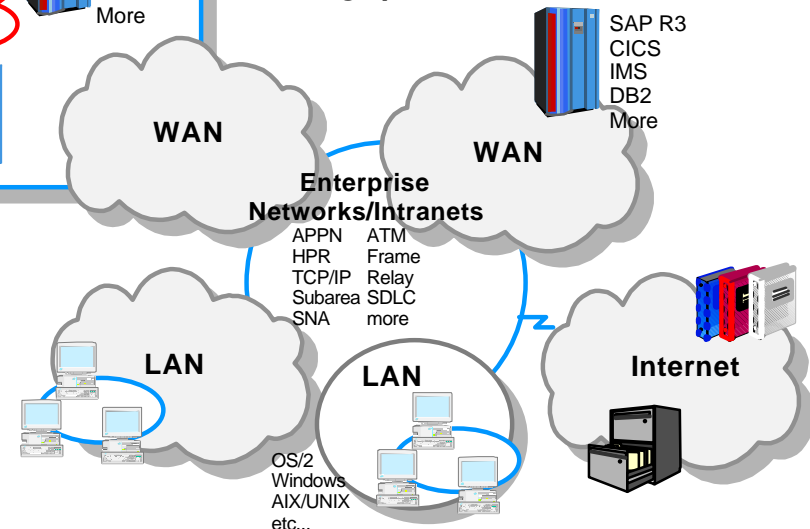
RIPv2 for TCP/IP

- Improved network availability and reduced network maintenance



High performance Data Transfer UDP

- Increase performance for SAP R/3 applications accessing DB2 over TCP/IP



Improvements for APPN/HPR and SNA

- Sysdef reduced for switched resources
- Invigorated error detection for devices and channels
- Session awareness filtering reduces unneeded APPN/HPR NW traffic

New Domain Names Server (DNS) Kit

- Exploits Parallel Sysplex WLM for DNS Connection Balancing
- Orderable but not integration tested

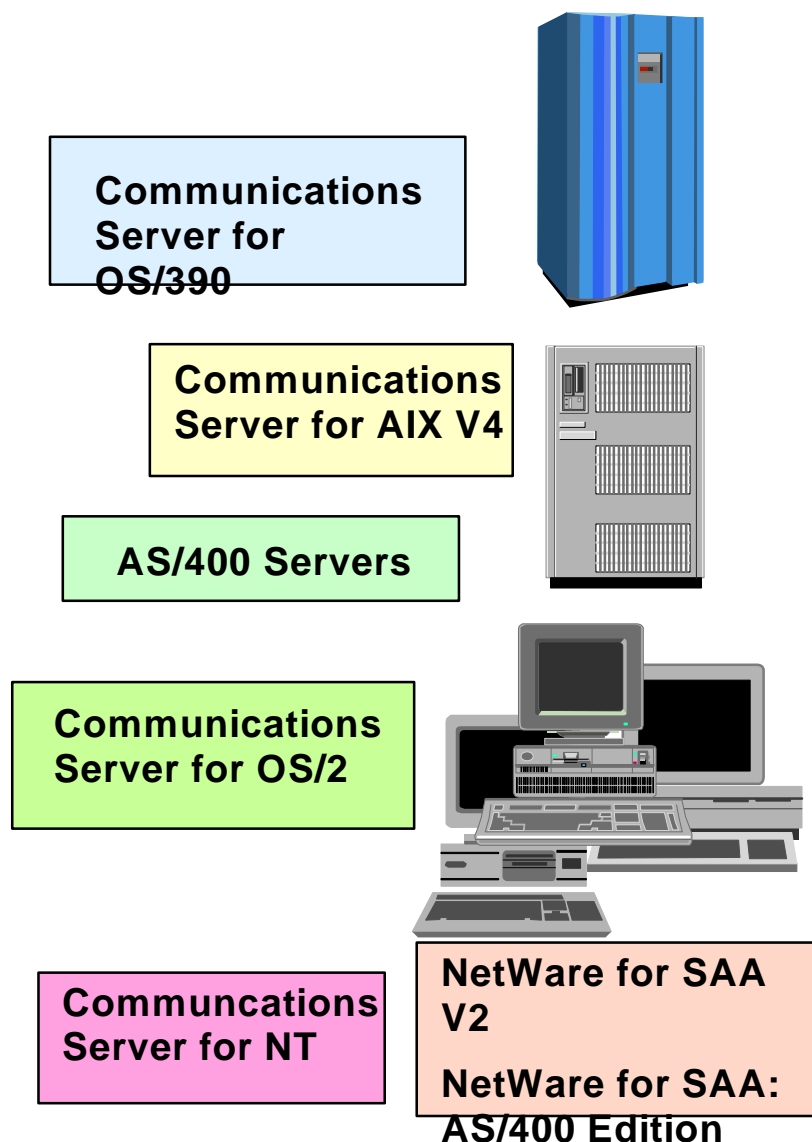
IBM Software

Communications Server Competitive Advantages

- **Powerful SNA gateway**
 - Most competitive SNA implementation and best performance
 - APPN, High-Performance Routing and DLUR
- **Premier multiprotocol support**
 - Full range of network integration capability
 - Supports Web browsers, Lotus Notes and the Internet access over SNA
 - Support for legacy applications and LAN applications on an TCP/IP network
- **Internet access with Host On-Demand at no extra cost**
- **Single vendor for total networking solutions across OS/2, AIX, Windows NT, OS/390 and NetWare**
- **Proven reliability and performance in large-scale enterprise environments**
- **Out performs the competition where it counts**
- **Investment protection with network integration and API support. Comm Server delivers what your business needs.... today and tomorrow**

IBM Software

eNetwork Communications Server Benefits



- **Solution for network computing**
 - Global, heterogeneous networks
 - Diverse applications and networks
 - Internet access and intranet integration
 - Comprehensive, simplified approach
- **Provides superior business flexibility**
 - Choose applications, networks, and platforms
 - Save time, money, and resources
 - Preserve and enhance investments
- **Positions networks for the future**
 - Consistent, compatible growth path
 - Bridge past, current, and emerging technologies

IBM Software

For more information

URL

<http://www.networking.ibm.com/eNetwork>

<http://www.networking.ibm.com/cms/commserv.html>

http://www.networking.ibm.com/hex/hexprod_en.html

<http://www.networking.ibm.com/pcf/pcfprod.html>

Content

IBM eNetwork Software

IBM eNetwork Communications Server

Host On-Demand

Personal Communications

IBM Software

IBM eNetwork Software Brochures

Cross Platform

- IBM eNetwork Software
- Solutions for Internet and Intranet Infrastructures
- Solutions for Network Integration
- Solutions for Any-to-Any Information Access
- Communications Server Family Brochure
- Communications Server Spec Sheet
- Use your SNA network for Internet access
- Integrate SAP R/3 into your SNA or APPN network

OS/390

- Communications Server for OS/390
- TCP/IP for MVS V3R2
- VTAM V4R3 for MVS/ESA

AIX

- Communications Server for AIX
- SNA Client Access for AIX
- SNA Application Access for AIX
- Royal Bank of Trinidad and Tobago branches out

OS/2

- Communications Server for OS/2 Warp
- Communications Server for OS/2 Warp, OS/2 Access Feature
- Communications Server for OS/2 Warp, Windows Access Feature
- 10 Reasons to Buy Communications Server/2
- Filiadata: SAP R/3 over SNA
- Zahid Tractors: Notes over APPN

NetWare

- NetWare for SAA 2.2
- NetWare for SAA: AS/400 Edition 2

PCOMM

- Personal Communications AS/400 and 3270 Family of Desktop and Emulation Products
- North Carolina Farm Bureau Mutual Insurance: PCOMM

Windows

- Internet Connection Corporate Kit for Windows 3.1 and Windows 95
- Communications Server for Windows NT brochure
- 10 Reasons to Buy Communications Server for Windows NT

IBM Pub Number

G325-3698

G325-3675

G325-3676

G325-3677

G325-5207-02

G325-3565-01

G325-5102-01

G325-3650-00

G325-5206-00

G325-3433-02

G325-6574-00

G325-3572-02

G325-3448-01

G325-3447-01

G325-3655-00

G325-3596-01

G325-3568-01

G325-3566-00

G325-3564-01

G325-3624-00

G325-3648-00

G325-6575-00

G325-6581-00

G325-3475-00

G325-3647-00

G325-3458-02

G325-3684-00

G325-3683-00

IBM Software