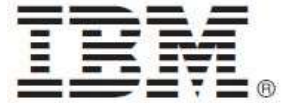


IBM Communications Server for Data Center Deployment

Version 7.1



Quick Start Guide

This guide gets you started with a typical installation for IBM Communications Server for Data Center Deployment.

Translated versions: To obtain the Quick Start Guide in other languages, access the PDF files on the Quick Start CD or DVD.

Product overview: Communication Server is a business solution that can enable you to create an integrated enterprise-wide network with a mix of operating systems and computer hardware to connect business resources over wide geographic areas.

Communications Server is the solution for companies that:

- Run multiprotocol or multiple networks
- Have existing SNA applications that they want to extend over TCP/IP networks
- Wish to consolidate SNA resources closer to the data center
- Need to support users in a variety of locations - in the office, at home or traveling

- Want to:
 - Improve data security over the Internet/Intranet while improving network availability
 - Use Branch Extender or Enterprise Extender advanced networking technologies to implement more cost-effective networks
 - Consolidate or change their backbone networks
 - Provide SNA 3270 protocol access to TCP/IP users and any Java enabled Web browser
 - Access data from virtually anywhere using familiar interfaces and protocols

System requirements: For Communications Server for Data Center Deployment, system requirements for the platforms can be found at:

<https://www.ibm.com/products/communications-server-for-data-center/details>

Features:

The Communications Server for Data Center Deployment web site describes the offering of the platform support:

<https://www.ibm.com/products/communications-server-for-data-center>

Step 1: Access the software and documentation

If you download your product from Passport Advantage, follow the instructions in the download document available at

<https://www.ibm.com/support/pages/node/312339>

This product offering includes:

IBM Communications Server for Data Center Deployment Quick Start Guide CD

IBM Communications Server for Data Center Deployment on AIX v7.1 CD

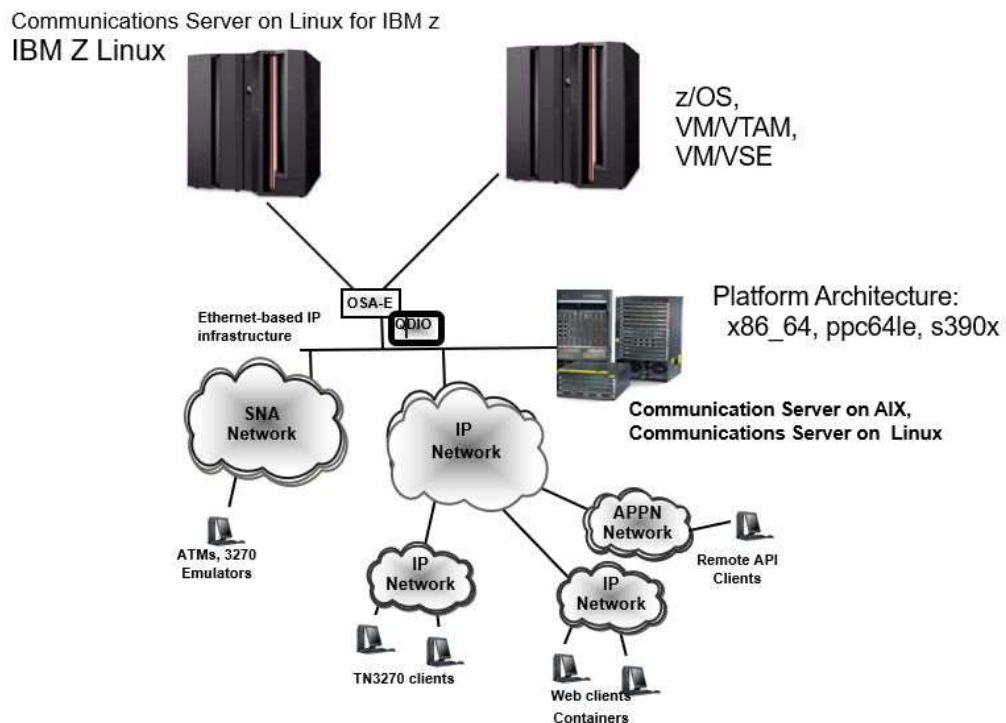
IBM Communications Server for Data Center Deployment on Linux v7.1 CD

IBM Communications Server for Data Center Deployment Remote API Clients v7.1 CD

Step 2: Review the base architecture

Documentation is also available in the \DOCS directory on the Quick Start CD or product CD.

Communications Server for Data Center Deployment



IBM Communications Server for Data Center Deployment Version 7.1 Licensed Materials - Property of IBM. (C) Copyright IBM Corp. 1991, 2021. All Rights Reserved. U.S. Government Users Restricted Rights - Use, duplication or disclosure restricted by GSA ADP Schedule Contract with IBM Corp. IBM, Passport Advantage and System z are trademarks or registered trademarks of International Business Machines in the US, other countries, or both. Java and all Java-based trademarks are trademarks of Sun Microsystems, Inc. in the United States, other countries, or both. Linux is a trademark of Linus Torvalds. Other company, product, or service names may be trademarks or service marks of others.

IBM, the IBM logo, and ibm.com are trademarks or registered trademarks of International Business Machines Corp., registered in many jurisdictions worldwide. Other product and service names might be trademarks of IBM or other companies. A current list of IBM trademarks is available on the Web at "Copyright and trademark information" www.ibm.com/legal/copytrade.shtml.