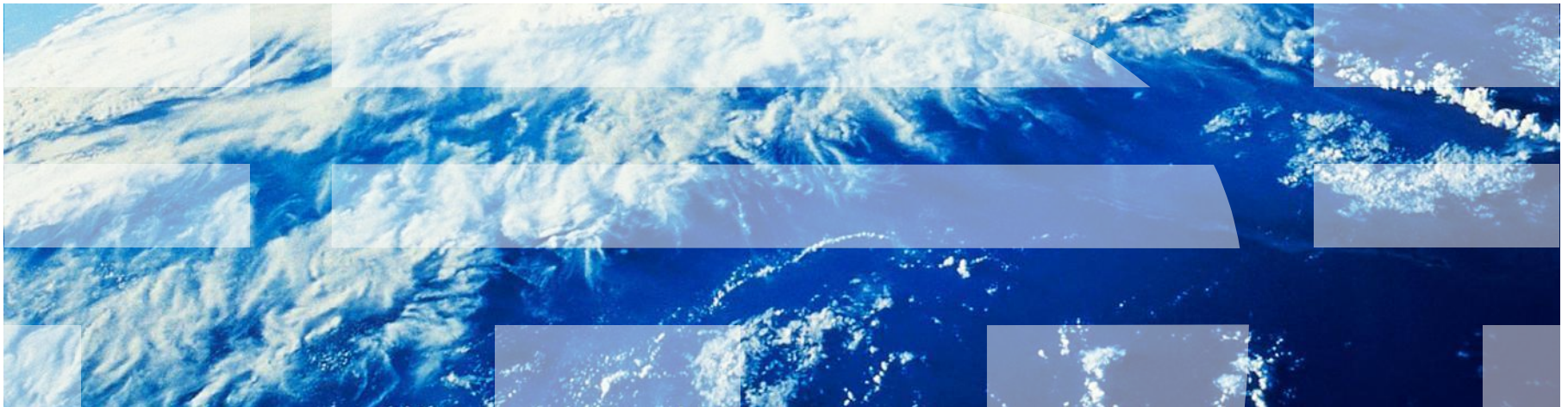


IBM Worklight V6.2.0 Getting Started

Trusteer iOS Integration



Trademarks

- IBM, the IBM logo, ibm.com, Rational, and Rational Team Concert are trademarks or registered trademarks of International Business Machines Corporation, registered in many jurisdictions worldwide. Worklight is a trademark or registered trademark of Worklight, an IBM Company. Other product and service names might be trademarks of IBM or other companies. A current list of IBM trademarks is available on the Web at “[Copyright and trademark information](#)” at www.ibm.com/legal/copytrade.shtml.
- Microsoft, Windows, and the Windows logo are trademarks of Microsoft Corporation in the United States, other countries, or both.
- Other company products or service names may be trademarks or service marks of others.
- This document may not be reproduced in whole or in part without the prior written permission of IBM.
- Java and all Java-based trademarks and logos are trademarks or registered trademarks of Oracle and/or its affiliates
- More about IBM: <http://www.ibm.com/ibm/us/en/>

Agenda

- Introduction
- Obtain Trusteer SDK
- Copy files into XCode project
- Link libraries
- Access Risk Items in JavaScript
- Access Risk Items in Objective-C
- Authentication Config
- JavaScript Challenge Handler
- Native Challenge Handler
- Sample

Introduction

Trusteer Mobile SDK collects multiple mobile device risk factors and provides them to the mobile app, enabling organizations to restrict mobile app functionality based on risk levels.

In your IBM Worklight application, you may want to protect access to some specific resources or procedures based risk levels, such as detected malware or whether the device is jailbroken or rooted.

For example, you could prevent a malware-ridden device from logging into your banking app, and prevent rooted devices from using the “transfer funds” feature.

Agenda

- Introduction
- Obtain Trusteer SDK
- Copy files into XCode project
- Link libraries
- Access Risk Items in JavaScript
- Access Risk Items in Objective-C
- Authentication Config
- JavaScript Challenge Handler
- Native Challenge Handler
- Sample

Obtain Trusteer SDK for iOS

Before starting make sure you have the following items:

- Trusteer Mobile iOS library (libtas_full.a)
- A Worklight-compatible Trusteer license file (tas.license)
- A Trusteer configuration package (default_conf.rpkg)
- A Trusteer Application Security Manifest (manifest.rpkg)

See Trusteer documentation or contact Trusteer support if you are missing any of those items.

You may receive those items either as standalone files, or as an IBM Worklight Application Component.

To learn more about installing an IBM Worklight Application Component (*.WLC) see IBM Worklight documentation.

You still need to follow the following steps if you use a WLC file.

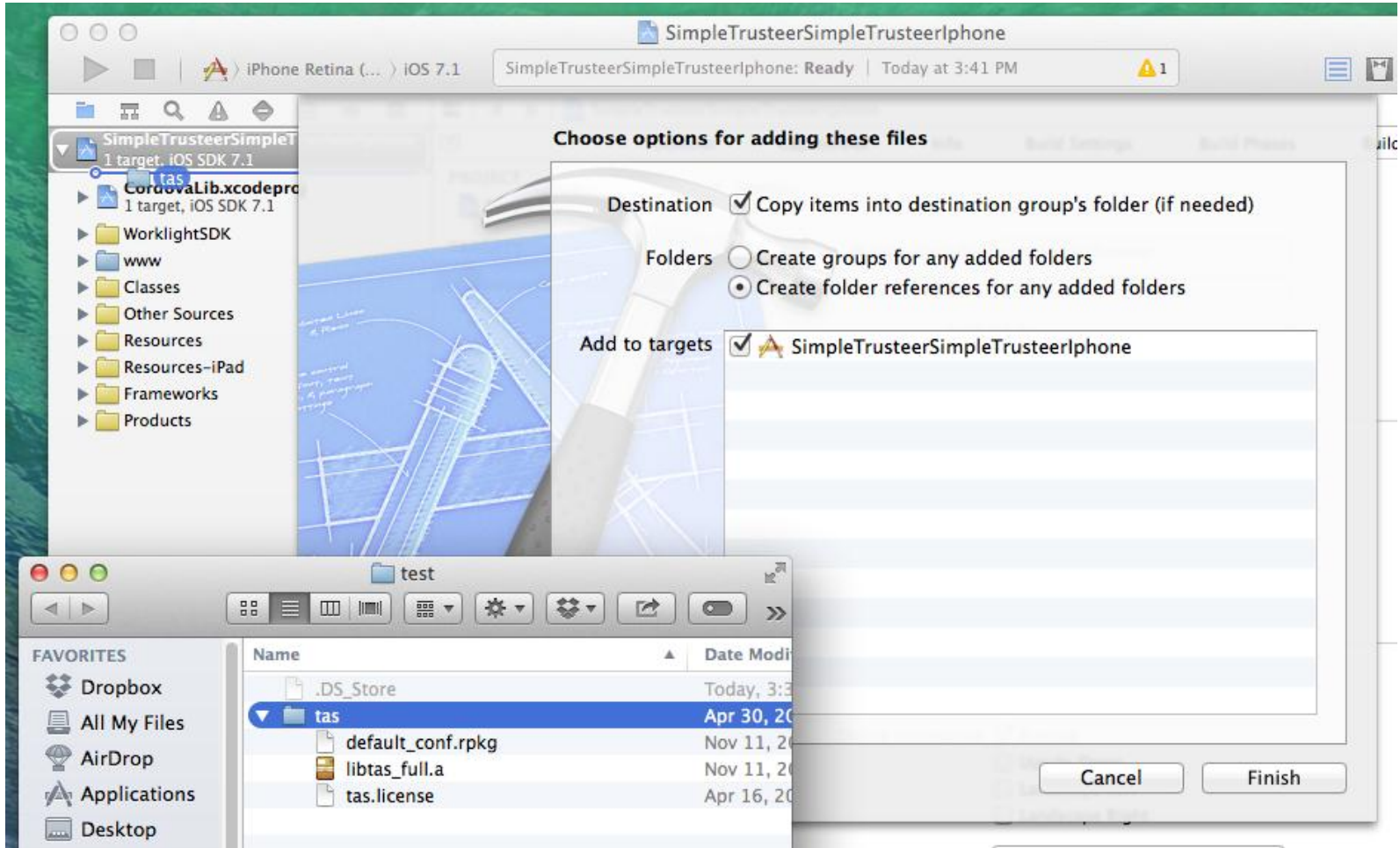
Agenda

- Introduction
- Obtain Trusteer SDK
- Copy files into XCode project
- Link libraries
- Access Risk Items in JavaScript
- Access Risk Items in Objective-C
- Authentication Config
- JavaScript Challenge Handler
- Native Challenge Handler
- Sample

Copy Files Into XCode Project

- Create a directory on your system called “tas” containing the 4 above files. If you’ve installed Trusteer as an Application Component, this folder will be created for you in the native folder.
- In your XCode project (whether Worklight-generated Hybrid, or your own using Worklight Native API), drag the folder created above onto your project navigator.
- Check “Copy items into destination group’s folder (if needed)”.
- Select “Create folder references for any added folders”. Make sure your target is selected.
- See screenshot on next slide

Copy Files Into XCode Project



Copy Files Into XCode Project

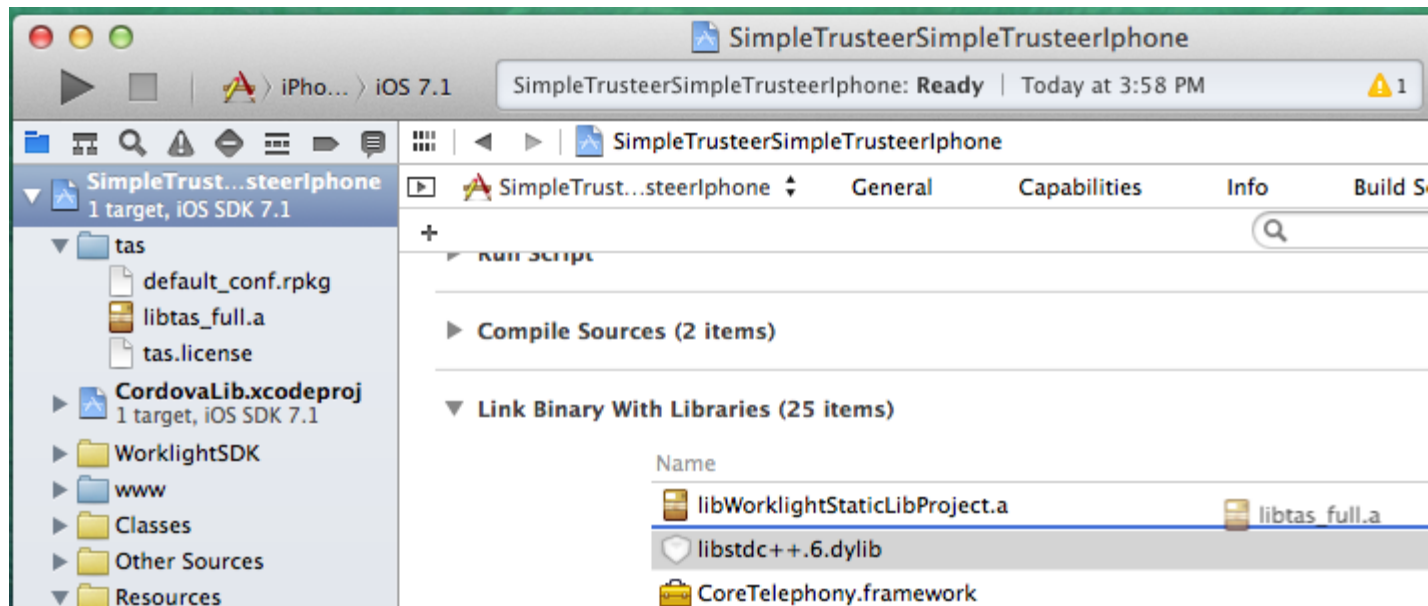
- Drag the “tas.license” file from the tas folder into the “Resources” folder.
- Make sure the file contains your license information.

Agenda

- Introduction
- Obtain Trusteer SDK
- Copy files into XCode project
- **Link libraries**
- Access Risk Items in JavaScript
- Access Risk Items in Objective-C
- Authentication Config
- JavaScript Challenge Handler
- Native Challenge Handler
- Sample

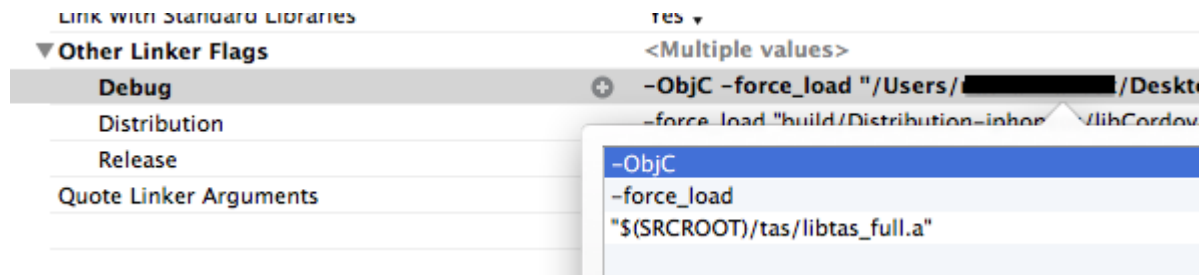
Link Trusteer Libraries

In Build Phases > Link Binary With Libraries, drag and drop libtas_full.a to link your project with the Trusteer library. If you get linker errors, move libWorklightStaticLibProject.a to the top of the list.

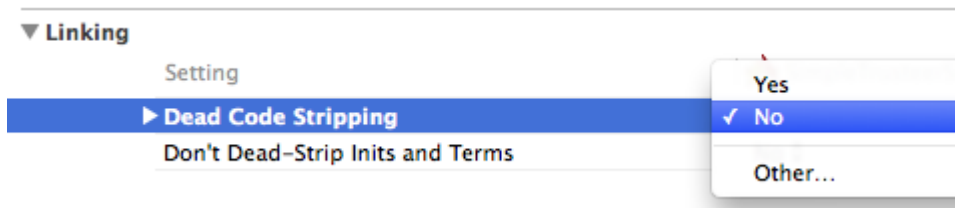


Link Trusteer Libraries

- In Build Settings > Linking > Other Linker Flags, add: `-force_load "$(SRCROOT)/tas/libtas_full.a"`



- In Build Settings > Linking > Dead Code Stripping, select NO.



Agenda

- Introduction
- Obtain Trusteer SDK
- Copy files into XCode project
- Link libraries
- **Access Risk Items in JavaScript**
- Access Risk Items in Objective-C
- Authentication Config
- JavaScript Challenge Handler
- Native Challenge Handler
- Sample

Access Risk Items in JavaScript

Optionally, you can access the client-side generated Trusteer data object using the following API:

```
WL.Trusteer.getRiskAssessment(onSuccess);
```

Where `onSuccess` is a function that will receive a JSON object containing all the data processed by Trusteer. See Trusteer documentation to get information on each risk item.

```
function onSuccess(result) {  
  //See in the logs what the full result looks like  
  WL.Logger.debug(JSON.stringify(result));  
  //Check for a specific flag  
  if(result["os.rooted"]["value"] != 0) {  
    alert("This device is jailbroken!");  
  }  
}
```

Agenda

- Introduction
- Obtain Trusteer SDK
- Copy files into XCode project
- Link libraries
- Access Risk Items in JavaScript
- Access Risk Items in Objective-C
- Authentication Config
- JavaScript Challenge Handler
- Native Challenge Handler
- Sample

Access Risk Items in Objective-C

Optionally, you can access the client-side generated Trusteer data object using the following API:

```
#import "WLTrusteer.h"
NSDictionary* risks =[[WLTrusteer sharedInstance] riskAssessment];
```

This returns an NSDictionary of all the data processed by Truster. See Trusteer documentation to get information on each risk item.

```
//See in the logs what the full result looks like
NSLog(@"%@",risks);
//Check for a specific flag
NSNumber* rooted = [[risks objectForKey:@"os.rooted"]
    objectForKey:@"value"];
if([rooted intValue]!= 0){
    NSLog(@"Device is jailbroken!");
}
```

Agenda

- Introduction
- Obtain Trusteer SDK
- Copy files into XCode project
- Link libraries
- Access Risk Items in JavaScript
- Access Risk Items in Objective-C
- **Authentication Config**
- JavaScript Challenge Handler
- Native Challenge Handler
- Sample

Authentication Config

To prevent access to specific resources when a device is at risk, you can protect your adapter procedures or your applications with a custom security test containing a Trusteer realm. See IBM Worklight documentation for general information on security tests and realms.

The Trusteer realm will check the data generated by the Trusteer SDK and allow/reject the request based on the parameters you set.

See next page for an example of a Trusteer realm and login module you can add to your authenticationConfig.xml

Authentication Config

```

<realms>
  ...
  <realm name="wl_basicTrusteerFraudDetectionRealm"
    loginModule="trusteerFraudDetectionLogin">
    <className>
      com.worklight.core.auth.ext.TrusteerAuthenticator
    </className>
    <parameter name="rooted-device" value="block"/>
    <parameter name="device-with-malware" value="block"/>
    <parameter name="rooted-hiders" value="block"/>
    <parameter name="unsecured-wifi" value="alert"/>
    <parameter name="outdated-configuration" value="alert"/>
  </realm>
</realms>

```

Authentication Config

```
<loginModules>
  ...
  <loginModule name="trusteerFraudDetectionLogin">
    <className>
      com.worklight.core.auth.ext.TrusteerLoginModule
    </className>
  </loginModule>
</loginModules>
```

Authentication Config

This realm contains 5 parameters:

- `rooted-device` - indicates whether the device is rooted (android) or jailbroken (iOS)
- `device-with-malware` - indicates whether the device contains malware
- `rooted-hiders` - indicate that the device contains root hiders applications that hides the fact that the device is rooted/jailbroken
- `unsecured-wifi` - indicates that the device is currently connected to an insecure wifi.
- `outdated-configuration` - indicates that Trusteer SDK configuration hasn't updated for some time (didn't connect to the Trusteer server).
- The possible values are `block`, `alert` or `accept`.

Agenda

- Introduction
- Obtain Trusteer SDK
- Copy files into XCode project
- Link libraries
- Access Risk Items in JavaScript
- Access Risk Items in Objective-C
- Authentication Config
- JavaScript Challenge Handler
- Native Challenge Handler
- Sample

JavaScript Challenge Handler

Assuming you've added a Trusteer realm to your server's authentication configuration file, you can register a challenge handler to receive the responses from the authenticator.

```
var trusteeChallengeHandler =  
  WL.Client.createWLChallengeHandler("wl_basicTrusteerFraudDetectionRealm")  
  ;
```

Notice that you are registering a `WLChallengeHandler` and not a `ChallengeHandler`. See IBM Worklight documentation on `WLChallengeHandler`.

JavaScript Challenge Handler

If you have set one of your realm options to `block`, a blocking event will trigger `handleFailure`.

```
trusteerChallengeHandler.handleFailure = function(error) {  
    WL.SimpleDialog.show("Error", "Operation failed. Please contact  
customer support (reason code: " + error.reason + ")", [{text:"OK"}]);  
};
```

`error.reason` can be one of the following: `TAS_ROOT`,
`TAS_ROOT_EVIDENCE`,
`TAS_MALWARE`,`TAS_WIFI`,`TAS_OUTDATED`,`TAS_INVALID_HEADER`,`TAS_NO_HEADER`.

JavaScript Challenge Handler

If you have set one of your realm options to alert, you can catch the alert event by implementing the `processSuccess` method.

```
trusteerChallengeHandler.processSuccess = function(identity) {
    var alerts = identity.attributes.alerts; //Array of alerts codes
    if(alerts.length > 0) {
        WL.SimpleDialog.show("Warning", "Please note that your
                               device is : " +
alerts, [{text:"OK"}]);
    }
};
```

Agenda

- Introduction
- Obtain Trusteer SDK
- Copy files into XCode project
- Link libraries
- Access Risk Items in JavaScript
- Access Risk Items in Objective-C
- Authentication Config
- JavaScript Challenge Handler
- **Native Challenge Handler**
- Sample

Native Challenge Handler

Assuming you've added a Trusteer realm to your server's authentication configuration file, you can register a challenge handler to receive the responses from the authenticator.

Create a class that extends `WLChallengeHandler`:

```
#import "WLChallengeHandler.h"  
@interface TrusteerChallengeHandler : WLChallengeHandler  
@end
```

Register your newly created challenge handler for your Trusteer realm:

```
[[WLClient sharedInstance]  
 registerChallengeHandler:[TrusteerChallengeHandler alloc]  
 initWithRealm:@"wl_basicTrusteerFraudDetectionRealm"]];
```

Native Challenge Handler

If you have set one of your realm options to `block`, a blocking event will trigger `handleFailure`.

```
@implementation TrusteerChallengeHandler
//...
-(void) handleFailure: (NSDictionary *)failure{
    NSLog(@"Your request could not be completed. Reason code:
    %@", failure[@"reason"]);
}
//...
@end
```

reason can be one of the following: `TAS_ROOT`, `TAS_ROOT_EVIDENCE`, `TAS_MALWARE`, `TAS_WIFI`, `TAS_OUTDATED`, `TAS_INVALID_HEADER`, `TAS_NO_HEADER`.

Native Challenge Handler

If you have set one of your realm options to alert, you can catch the alert event by implementing the `handleSuccess` method.

```
@implementation TrusteerChallengeHandler
//...
-(void) handleSuccess:(NSDictionary *)success{
    NSArray* alerts = success[@"attributes"][@"alerts"];
    if(alerts && alerts.count){
        for(NSString* alert in alerts){
            NSLog(@"This device is %@", alert);
        }
    }
}
//...
@end
```

Agenda

- Introduction
- Obtain Trusteer SDK
- Copy files into XCode project
- Link libraries
- Access Risk Items in JavaScript
- Access Risk Items in Objective-C
- Authentication Config
- JavaScript Challenge Handler
- Native Challenge Handler
- **Sample**

Sample: set up

- Download the **TrusteerIntegrationProject**
- Import it into your IBM Worklight workspace
- For pure native, download and open **TrusteeriOSNativeProject** as well (update **worklight.plist** with your IP address)
- Install the Trusteer SDK into your application(s) following the steps explained previously
- Deploy and run it on your iOS device

Sample: expected results

- The sample will display whether or not it successfully loaded the Trusteer SDK
- It will display whether your device is jailbroken or not.
- It features a button to “**get sensitive data**”, which invokes a dummy procedure protected by a Trusteer realm.
- Depending on the state of your device, you should see “**this is sensitive data**”, or an error explaining why your request was rejected.

Notices

- Permission for the use of these publications is granted subject to these terms and conditions.
- This information was developed for products and services offered in the U.S.A.
- IBM may not offer the products, services, or features discussed in this document in other countries. Consult your local IBM representative for information on the products and services currently available in your area. Any reference to an IBM product, program, or service is not intended to state or imply that only that IBM product, program, or service may be used. Any functionally equivalent product, program, or service that does not infringe any IBM intellectual property right may be used instead. However, it is the user's responsibility to evaluate and verify the operation of any non-IBM product, program, or service.
- IBM may have patents or pending patent applications covering subject matter described in this document. The furnishing of this document does not grant you any license to these patents. You can send license inquiries, in writing, to:
 - IBM Director of Licensing
IBM Corporation
North Castle Drive
Armonk, NY 10504-1785
U.S.A.
- For license inquiries regarding double-byte character set (DBCS) information, contact the IBM Intellectual Property Department in your country or send inquiries, in writing, to:
 - Intellectual Property Licensing
Legal and Intellectual Property Law
IBM Japan Ltd.
1623-14, Shimotsuruma, Yamato-shi
Kanagawa 242-8502 Japan
- **The following paragraph does not apply to the United Kingdom or any other country where such provisions are inconsistent with local law:** INTERNATIONAL BUSINESS MACHINES CORPORATION PROVIDES THIS PUBLICATION "AS IS" WITHOUT WARRANTY OF ANY KIND, EITHER EXPRESS OR IMPLIED, INCLUDING, BUT NOT LIMITED TO, THE IMPLIED WARRANTIES OF NON-INFRINGEMENT, MERCHANTABILITY OR FITNESS FOR A PARTICULAR PURPOSE. Some states do not allow disclaimer of express or implied warranties in certain transactions, therefore, this statement may not apply to you.
- This information could include technical inaccuracies or typographical errors. Changes are periodically made to the information herein; these changes will be incorporated in new editions of the publication. IBM may make improvements and/or changes in the product(s) and/or the program(s) described in this publication at any time without notice.
- Any references in this information to non-IBM Web sites are provided for convenience only and do not in any manner serve as an endorsement of those Web sites. The materials at those Web sites are not part of the materials for this IBM product and use of those Web sites is at your own risk.
- IBM may use or distribute any of the information you supply in any way it believes appropriate without incurring any obligation to you.
- Licensees of this program who wish to have information about it for the purpose of enabling: (i) the exchange of information between independently created programs and other programs (including this one) and (ii) the mutual use of the information which has been exchanged, should contact:
 - IBM Corporation
Dept F6, Bldg 1
294 Route 100
Somers NY 10589-3216
USA

- Such information may be available, subject to appropriate terms and conditions, including in some cases, payment of a fee.
- The licensed program described in this document and all licensed material available for it are provided by IBM under terms of the IBM Customer Agreement, IBM International Program License Agreement or any equivalent agreement between us.
- Information concerning non-IBM products was obtained from the suppliers of those products, their published announcements or other publicly available sources. IBM has not tested those products and cannot confirm the accuracy of performance, compatibility or any other claims related to non-IBM products. Questions on the capabilities of non-IBM products should be addressed to the suppliers of those products.

COPYRIGHT LICENSE:

- This information contains sample application programs in source language, which illustrate programming techniques on various operating platforms. You may copy, modify, and distribute these sample programs in any form without payment to IBM, for the purposes of developing, using, marketing or distributing application programs conforming to the application programming interface for the operating platform for which the sample programs are written. These examples have not been thoroughly tested under all conditions. IBM, therefore, cannot guarantee or imply reliability, serviceability, or function of these programs.
- Each copy or any portion of these sample programs or any derivative work, must include a copyright notice as follows:
 - © (your company name) (year). Portions of this code are derived from IBM Corp. Sample Programs.
© Copyright IBM Corp. _enter the year or years_. All rights reserved.

Privacy Policy Considerations

- IBM Software products, including software as a service solutions, ("Software Offerings") may use cookies or other technologies to collect product usage information, to help improve the end user experience, to tailor interactions with the end user or for other purposes. In many cases no personally identifiable information is collected by the Software Offerings. Some of our Software Offerings can help enable you to collect personally identifiable information. If this Software Offering uses cookies to collect personally identifiable information, specific information about this offering's use of cookies is set forth below.
- Depending upon the configurations deployed, this Software Offering may use session cookies that collect session information (generated by the application server). These cookies contain no personally identifiable information and are required for session management. Additionally, persistent cookies may be randomly generated to recognize and manage anonymous users. These cookies also contain no personally identifiable information and are required.
- If the configurations deployed for this Software Offering provide you as customer the ability to collect personally identifiable information from end users via cookies and other technologies, you should seek your own legal advice about any laws applicable to such data collection, including any requirements for notice and consent. For more information about the use of various technologies, including cookies, for these purposes, see IBM's Privacy Policy at <http://www.ibm.com/privacy>. If the configurations deployed for this Software Offering provide you as customer the ability to collect personally identifiable information from end users via cookies and other technologies, you should seek your own legal advice about any laws applicable to such data collection, including any requirements for notice and consent. For more information about the use of various technologies, including cookies, for these purposes, see IBM's Privacy Policy at <http://www.ibm.com/privacy> and IBM's Online Privacy Statement at <http://www.ibm.com/privacy/details>. If the configurations deployed for this Software Offering provide you as customer the ability to collect personally identifiable information from end users via cookies and other technologies, you should seek your own legal advice about any laws applicable to such data collection, including any requirements for notice and consent. For more information about the use of various technologies, including cookies, for these purposes, see IBM's Privacy Policy at <http://www.ibm.com/privacy> and IBM's Online Privacy Statement at <http://www.ibm.com/privacy/details> the sections entitled "Cookies, Web Beacons and Other Technologies" and the "IBM Software Products and Software-as-a-Service Privacy Statement" at <http://www.ibm.com/software/info/product-privacy>.

Support and comments

- For the entire IBM Worklight documentation set, training material and online forums where you can post questions, see the IBM website at:
 - <http://www.ibm.com/mobile-docs>
- **Support**
 - Software Subscription and Support (also referred to as Software Maintenance) is included with licenses purchased through Passport Advantage and Passport Advantage Express. For additional information about the International Passport Advantage Agreement and the IBM International Passport Advantage Express Agreement, visit the Passport Advantage website at:
 - <http://www.ibm.com/software/passportadvantage>
 - If you have a Software Subscription and Support in effect, IBM provides you assistance for your routine, short duration installation and usage (how-to) questions, and code-related questions. For additional details, consult your IBM Software Support Handbook at:
 - <http://www.ibm.com/support/handbook>
- **Comments**
 - We appreciate your comments about this publication. Please comment on specific errors or omissions, accuracy, organization, subject matter, or completeness of this document. The comments you send should pertain to only the information in this manual or product and the way in which the information is presented.
 - For technical questions and information about products and prices, please contact your IBM branch office, your IBM business partner, or your authorized remarketer.
 - When you send comments to IBM, you grant IBM a nonexclusive right to use or distribute your comments in any way it believes appropriate without incurring any obligation to you. IBM or any other organizations will only use the personal information that you supply to contact you about the issues that you state.
 - Thank you for your support.
 - Submit your comments in the IBM Worklight Developer Edition support community at:
 - <https://www.ibm.com/developerworks/mobile/worklight/connect.html>
 - If you would like a response from IBM, please provide the following information:
 - Name
 - Address
 - Company or Organization
 - Phone No.
 - Email address

Thank You

