

IBM Insight for Oracle Database 1.2

Overview of Process:

This software will remotely capture production database and operating system performance statistics. The captured statistics are written to the hard drive of a Windows NT/2000 PC dedicated for the collection process. When the collection process is complete, the statistics are compressed and must be e-mailed to IBM for analysis. A report will be sent to you detailing how your production database is utilized. The provided collection tool is designed to have a minimal impact on your production database server.

Requirements:

A dedicated PC:

- PC must be running Windows 2000 or NT 4.0 SP6.
- At least a 90MHz Pentium, 32MB RAM.
- PC must be on LAN with direct TCP/IP access to the production database server.
- The PC must be powered on during the entire data collection process.
- Disable the PC's power management (suspend) during the collection process.
- The Oracle8i Client software (8.1.6 and above) must be installed and a TNS service name must be configured for remote database access. Please test the service name with **tnsping**.

Oracle Database:

- **Insight** supports Oracle database releases 7.3 and above.
- The init.ora parameter "timed_statistics" equal to "TRUE".
- An Oracle ID with access to the following views:

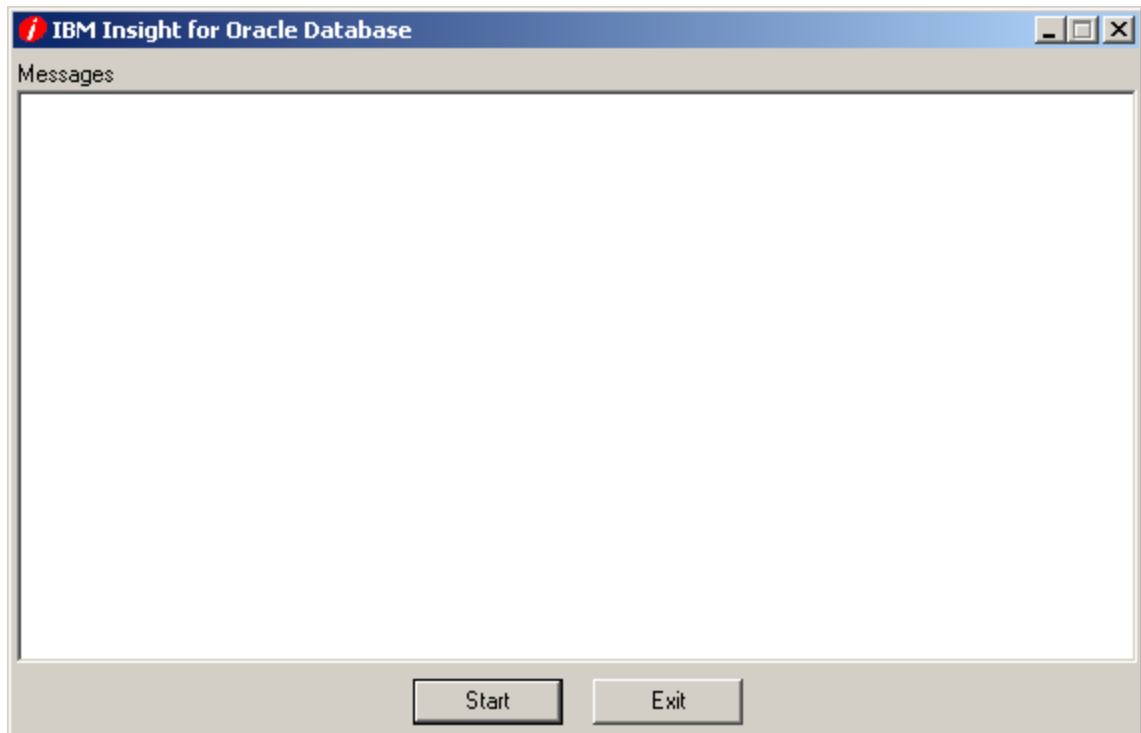
DBA_DATA_FILES
DBA_FREE_SPACE
V\$DATABASE
V\$INSTANCE
V\$VERSION
V\$SGASTAT
V\$PARAMETER
V\$DATAFILE
V\$FILESTAT
V\$SGASTAT
V\$ROWCACHE
V\$LIBRARYCACHE

Database Server - Windows NT\2000:

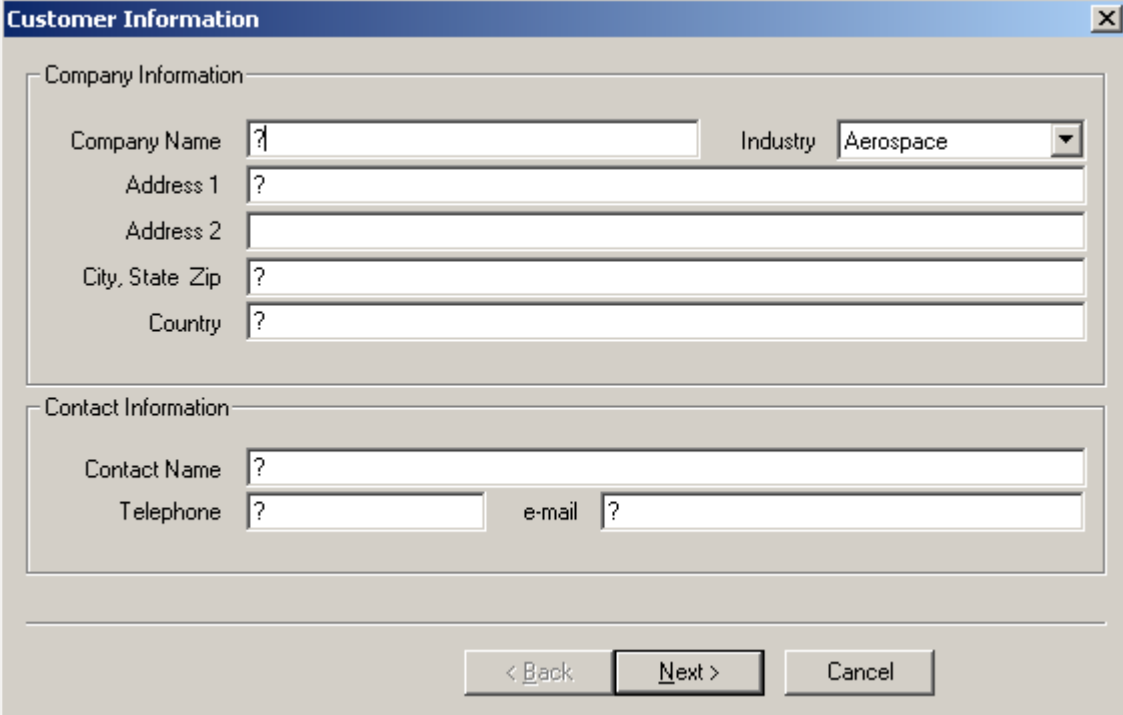
- For database servers running Windows NT 4.0, the file PDH.DLL in the “\Insight for Oracle\Redist\” directory of the PC must be copied to the \WINNT\SYSTEM32\ directory of the database server.
- For Windows NT and 2000, verify that the Windows disk performance counters are set to start at boot using the command line utility **diskperf**. If the disk performance counters are not set to start at boot, please execute **diskperf -Y** and start the *Insight* collection process after the next scheduled reboot.

Insight Usage Instructions:

1. From the Windows Start menu, select
Programs -> Insight for Oracle Database -> Oinsight 1.2.
2. Press the “Start” button.



3. Complete your company's information. (question mark indicates required field)



The "Customer Information" dialog box is divided into two sections: "Company Information" and "Contact Information".

Company Information:

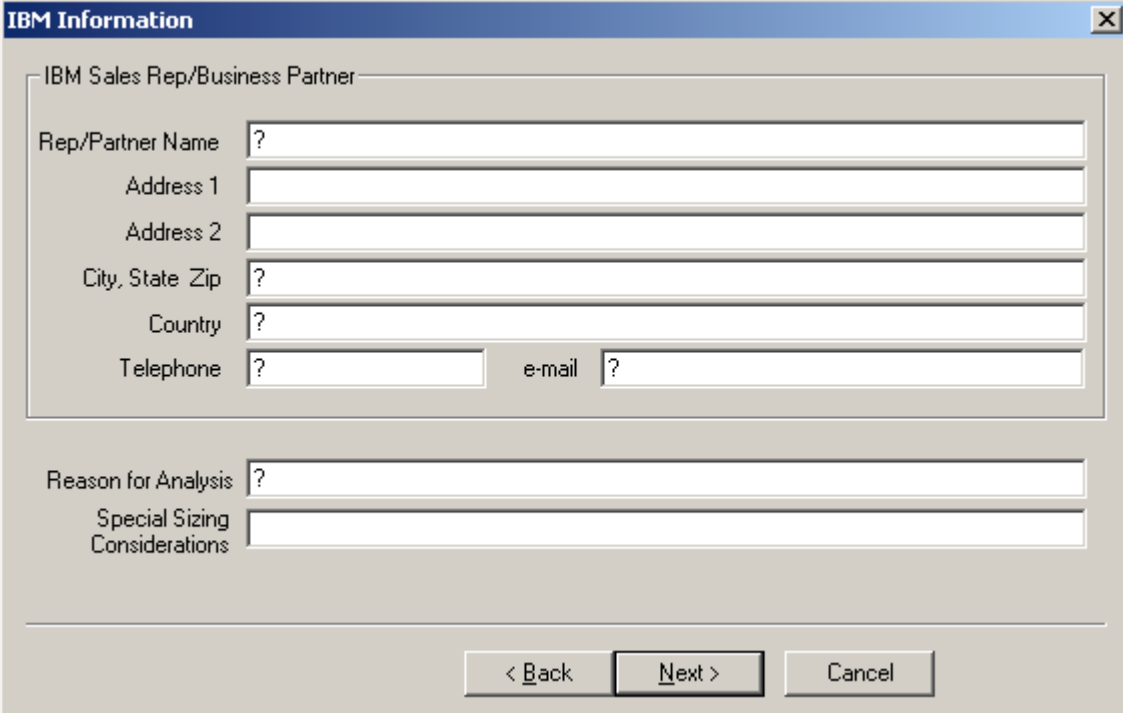
- Company Name:
- Address 1:
- Address 2:
- City, State Zip:
- Country:
- Industry:

Contact Information:

- Contact Name:
- Telephone:
- e-mail:

Buttons: < Back, Next >, Cancel

4. Complete your IBM Representative's information



The "IBM Information" dialog box is divided into two sections: "IBM Sales Rep/Business Partner" and "Reason for Analysis".

IBM Sales Rep/Business Partner:

- Rep/Partner Name:
- Address 1:
- Address 2:
- City, State Zip:
- Country:
- Telephone:
- e-mail:

Reason for Analysis:

- Reason for Analysis:
- Special Sizing Considerations:

Buttons: < Back, Next >, Cancel

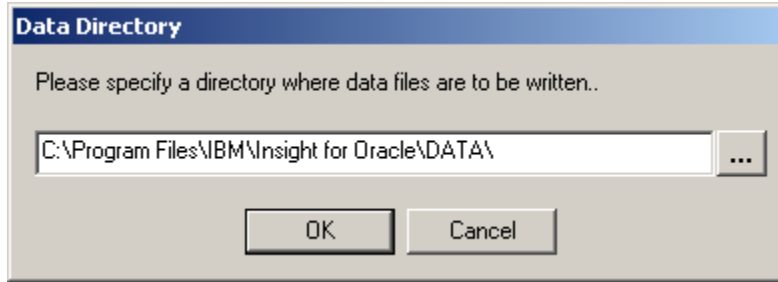
5. Complete the database server machine information.

The screenshot shows a dialog box titled "Database Server Information" with a close button (X) in the top right corner. The dialog is divided into a main content area and a button area at the bottom. The main content area is titled "Machine Information" and contains six input fields arranged in three rows and two columns. Each field has a question mark inside, indicating it is empty. The fields are: "Manufacturer", "Model", "Number of CPUs", "CPU Speed (MHz)", "Physical Memory (MB)", and "Physical Disk (GB)". The button area at the bottom contains three buttons: "< Back", "Finish" (which is highlighted with a dashed border), and "Cancel".

6. Logon to Oracle.

The screenshot shows a dialog box titled "Logon". It contains three input fields under the "Oracle" section: "User Name" (with a question mark), "Password" (with asterisks), and "Service Name". At the bottom of the dialog are two buttons: "Logon" (which is highlighted with a dashed border) and "Cancel".

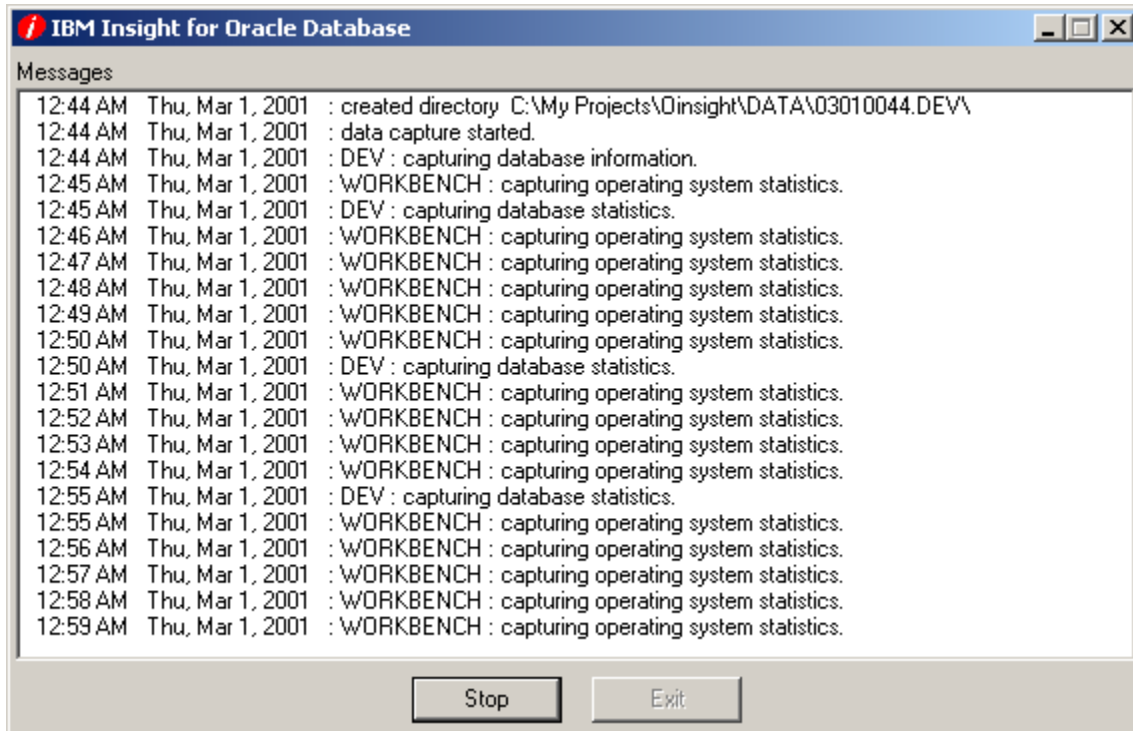
7. Specify where you want the data files written.



By default you are prompted with the program installation directory followed by the subdirectory \DATA\. If acceptable, press the "OK" button, otherwise specify a different directory (can be on a network drive). The collector will then create a session directory. The session directory is a subdirectory of the specified data directory with the following date/time naming convention:
MMDDYYYYHHMM.<SID>

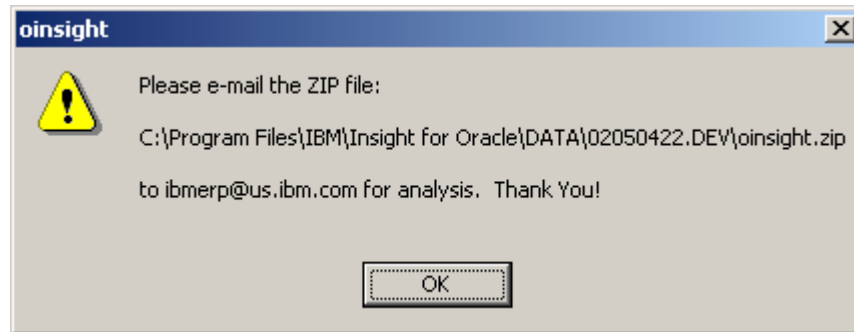
A unique session directory is created for each run.

8. **Insight** is now running and will capture performance statistics every minute. Status messages will scroll in the "Messages" window.



9. When data collection is complete, stop **Insight** by pressing the "Stop" button.

10. The data and log files are compressed , and you will be presented with the following message box:



The actual path of the ZIP file will depend upon your installation, data, and session directories.

In your email program, create a new mail with the following subject line:

Subject: Insight for Oracle data for <company name>

Attach the ZIP file and send it to ibmerp@us.ibm.com for analysis.