

IBM Insight for SAP R/3

Results of Analysis for Sample

R/3 System: LC2

Monday, October 20, 2003 - Monday, October 27, 2003

Report Prepared by IBM America's Techline

October 30, 2003

<http://www.ibm.com/erp/sap/insight>

Table of Contents

General	3
Abbreviations	4
System Information	5
Component Information	6
Patch Information	7
Active Users	9
Dialog Steps	10
Dialog Response Time	11
Dialog Steps by Task Type	12
Dialog Steps by Module	13
Dialog Steps by Code Type	14
CPU Time by Task Type	15
CPU Time by Module	16
CPU Time by Code Type	17
Database Wait Time	18
Top Transactions	21
Top Users	26
Instance List	31
Instance Information	32
Instance Statistics	34
Host List	42
Host Information	43
Host Processes	45
Host CPU Utilization Summary	47
Host Memory Utilization Summary	48
Host Disk Utilization Summary	49
Host Statistics	50
Top Disk	56

General

Insight Report - Version 3.1.1 (October 2003)

For a more detailed analysis than provided here, please contact IBM Global Services (IGS). IGS is responsible for providing service offerings for client/server capacity analysis and modeling.

Customer Contact

Name: John Doe
e-mail: John@Doe.com
Telephone: 555-555-1212
Country: USA

IBM/Partner Contact

Name: John Doe
e-mail: John@Doe.com
Telephone: 555-555-1212
Country: USA

Techline Contact

Name: Azam Khan
e-mail: azams@us.ibm.com
Telephone: 610-578-2368

Report Reason: Performance Evaluation
Considerations: Please provide sizing for pSeries based on this Insight data

Copyright © 1999-2003 IBM Corporation. All Rights Reserved.

Neither this documentation nor any part of it may be copied or reproduced in any form or by any means or translated into another language, without the prior consent of the IBM Corporation. IBM makes no warranties or representations with respect to the content hereof and specifically disclaims any implied warranties of merchantability or fitness for any particular purpose. IBM assumes no responsibility for any errors that may appear in this document. The information contained in this document is subject to change without any notice. IBM reserves the right to make any such changes without obligation to notify any person of such revision or changes. IBM makes no commitment to keep the information contained herein up to date.

SAP, R/3 and ABAP/4 are registered trademarks of SAP AG
IBM is a registered trademark of the International Business Machines Corporation

Abbreviations

Dialog Step Task Types

DIA	Dialog
UPD	Update (V1)
SPO	Spool
BKGD	Background
ENQ	Enqueue
BUF	Buffer Synchronization
CYCL	Cyclic Background ABAP
UP2	Update (V2)
ALE	Application Link Enabling
RFC	Remote Function Call
CPIC	Common Programming Interface for Communication

R/3 Application Modules

AC	Accounting - General
BC	Basis Components
CA	Cross-Application Components
CO	Controlling
CS	Customer Service
EC	Enterprise Controlling
FI	Financial Accounting
IM	Investment Management
LE	Logistics Execution
LO	Logistics - General
MM	Materials Management
QM	Quality Management
PA	Personnel Management
PE	Training and Event Management
PM	Plant Maintenance
PP	Production Planning and Control
PS	Project System
PT	Personnel Time Management
PY	Payroll Accounting
RE	Real Estate Management
SCM-EM	Supply Chain Event Management
SD	Sales and Distribution
SV	Service
TR	Treasury
OT	Other (Not Defined in R/3 Application Hierarchy)

System Information

Customer

Name:	Customer
Industry:	Manufacturing
Address:	123 South Road
City, State ZIP:	Town, NY 12345
Country:	USA

SAP R/3

System ID:	LC2	Install Date:	June 7, 1992
System Release:	45B	Total Users:	100
Addressability:	32 bit	Network:	Ethernet

Database

Database System:	DB6	DB Size:	400 GB
Database Release:	7.2		
Addressability:	32 bit		

Personal Computer (Insight Collector)

Collector Version:	3100
Operating System:	Microsoft Windows 2000 Service Pack 3 (Build: 2195)
Processor Type:	Intel Pentium
Processor Count:	1
Processor Speed:	447 MHz
Physical Memory:	200 MB
Start Time:	10:21:00 Monday, October 20, 2003
End Time:	08:07:00 Monday, October 27, 2003
Time Zone:	-18000

Component Information

Component	Release	Level	Description
SAP_APPL	45B	45	
SAP_BASIS	45B	45	

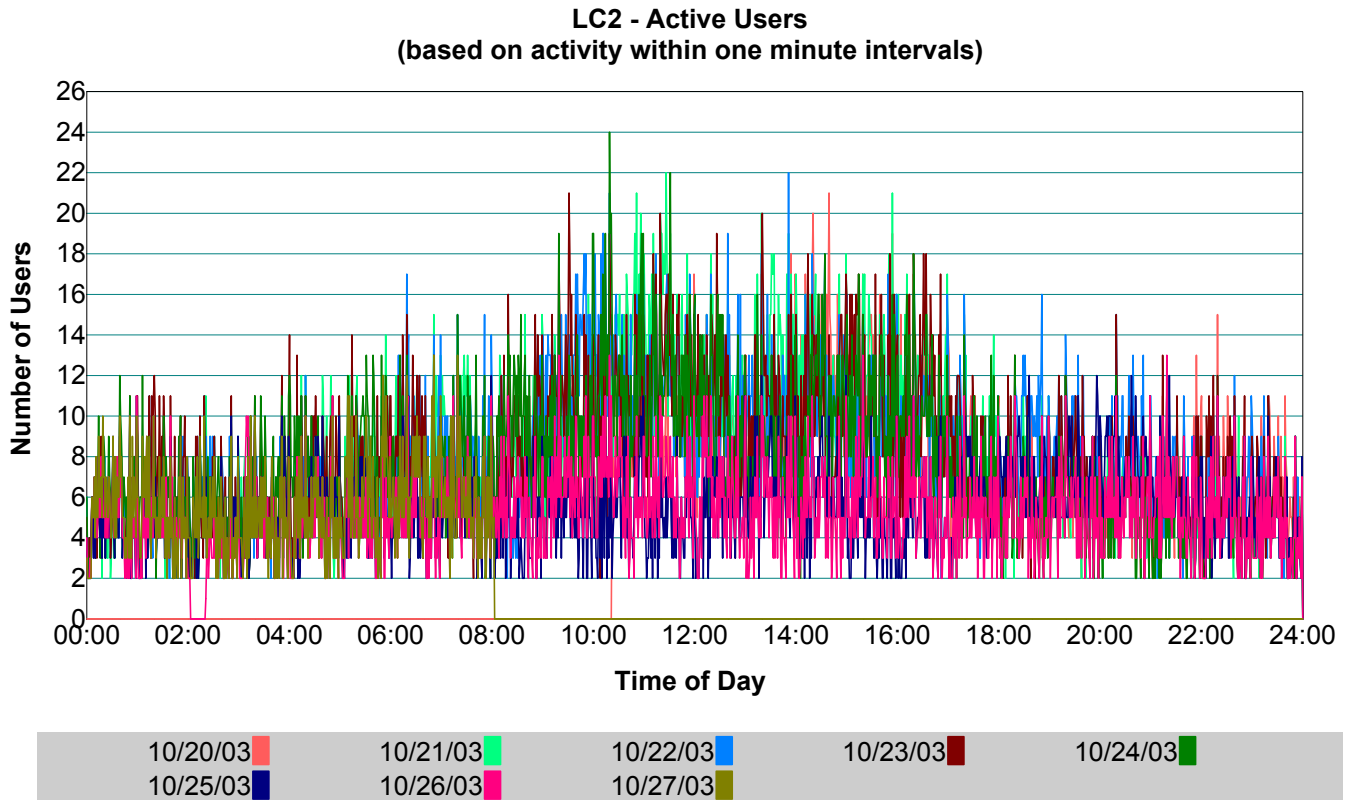
Patch Information

Patch	Date	Description
SAPKITAR23	05/15/2003	Application Servicetools for R/3 45B
SAPKITLPMA	05/15/2003	Solution Tools Plugin
SAPKD00028	05/13/2003	SPAM/SAINT Update - Version 45B/0037
SAPKITLP1G	08/24/2002	Solution Tools Plugin (ST-PI 003A_45B)
SAPKQNA310	11/03/2001	SAP_NOTES 45B: Änderungsstückliste (/SAPNOTES/INST10)
SAPKIGG310	11/03/2001	IS-SW 2.0A: patch 0010, CRT for SAPKH45B39 - 40
SAPKH45B40	11/03/2001	Hot Package 40 (Note 62119 ! Extra Large !)
SAPKH45B39	11/03/2001	Hot Package 39 (Note 62119 ! Extra Large !)
SAPKIGG309	11/03/2001	IS-SW 2.0A: patch 0009, CRT for SAPKH45B37 - 38
SAPKH45B38	11/03/2001	Hot Package 38 (Note 62119 ! Extra Large !)
SAPKH45B37	11/03/2001	Hot Package 37 (Note 62119 ! Extra Large !)
SAPKIGG308	11/03/2001	IS-SW 2.0A: patch 0008, CRT for SAPKH45B33 - 36
SAPKH45B36	11/03/2001	Hot Package 36 (Note 62119 ! Extra Large !)
SAPKH45B35	11/03/2001	Hot Package 35 (Note 62119 ! Extra Large !)
SAPKH45B34	11/03/2001	Hot Package 34 (Note 62119 ! Extra Large !)
SAPKH45B33	11/03/2001	Hot Package 33 (Note 62119 ! Extra Large !)
SAPKIGG307	03/08/2001	IS-SW 2.0A: patch 0007, CRT for SAPKH45B22 - 32
SAPKH45B32	03/08/2001	Hot Package 32 (Note 62119 ! Extra Large !)
SAPKH45B31	03/08/2001	Hot Package 31 (Note 62119 ! Extra Large !)
SAPKH45B30	03/08/2001	Hot Package 30 (Note 62119 ! Extra Large !)
SAPKH45B29	03/08/2001	Hot Package 29 (Note 62119 ! Extra Large !)
SAPKH45B28	03/08/2001	Hot Package 28 (Note 62119 ! Extra Large !)
SAPKH45B27	03/08/2001	Hot Package 27 (Note 62119 ! Extra Large !)
SAPKH45B26	03/08/2001	Hot Package 26 (Note 62119 ! Extra Large !)
SAPKH45B25	03/08/2001	Hot Package 25 (Note 62119 ! Extra Large !)
SAPKH45B24	03/08/2001	Hot Package 24 (Note 62119 ! Extra Large !)
SAPKH45B23	03/08/2001	Hot Package 23 (Note 62119 ! Extra Large !)
SAPKH45B22	03/08/2001	Hot Package 22 (Note 62119 ! Extra Large !)
SAPKIGG306	03/07/2001	IS-SW 2.0A: patch 0006, CRT for SAPKH45B19 - 21
SAPKH45B21	03/07/2001	Hot Package 21 (Note 62119 ! Extra Large !)
SAPKH45B20	03/07/2001	Hot Package 20 (Note 62119 ! Extra Large !)
SAPKH45B19	03/07/2001	Hot Package 19 (Note 62119 ! Extra Large !)
SAPKIGG305	03/07/2001	IS-SW 2.0A: CRT for SAPKH45B14 - SAPKH45B18

Patch Information - continued

Patch	Date	Description
SAPKH45B18	03/07/2001	Hot Package 18 (Note 62119 ! Extra Large !)
SAPKH45B17	03/07/2001	Hot Package 17 (Note 62119 ! Extra Large !)
SAPKH45B16	03/07/2001	Hot Package 16 (Note 62119 ! Extra Large !)
SAPKH45B15	03/07/2001	Hot Package 15 (Note 62119 ! Extra Large !)
SAPKH45B14	03/07/2001	Hot Package 14 (Note 62119 ! Extra Large !)
SAPKIGG304	03/06/2001	IS-SW 20A: patch 0004, CRT for SAPKH45B12-13
SAPKH45B13	03/06/2001	Hot Package 13 (Note 62119 ! Extra Large !)
SAPKH45B12	03/06/2001	Hot Package 12 (Note 62119 ! Extra Large !)
SAPKIGG303	03/06/2001	IS-SW 20A: patch 0003, CRT for SAPKH45B10 - 11
SAPKH45B11	03/06/2001	Hot Package 11 (Note 62119 ! Extra Large !)
SAPKH45B10	03/06/2001	Hot Package 10 (Note 62119 ! Extra Large !)
SAPKIGG302	03/06/2001	IS-SW 20A: Patch 0002, CRT for SAPKH45B08-09
SAPKH45B09	03/06/2001	Hot Package 9 (Note 62119 ! Extra Large !)
SAPKH45B08	03/06/2001	Hot Package 8 (Note 62119 ! Extra Large !)
SAPKIGG301	03/06/2001	IS-SW 20A: Patch 0001, CRT for SAPKH45B04-07
SAPKH45B07	03/06/2001	Hot Package 7 (Note 62119 ! Extra Large !)
SAPKH45B06	03/06/2001	Hot Package 6 (Note 62119 ! Extra Large !)
SAPKH45B05	03/06/2001	Hot Package 5 (Note 62119 ! Extra Large !)
SAPKH45B04	03/06/2001	Hot Package 4 (Note 62119 ! Extra Large !)
SAPKIGG300	03/06/2001	IS-SW 20A: CRT for SAPKH45B01 - SAPKH45B03
SAPKH45B03	03/06/2001	Hot Package 3 (Note 62119 ! Extra Large !)
SAPKH45B02	03/06/2001	Hot Package 2 (Note 62119 ! Extra Large !)
SAPKH45B01	03/06/2001	Hot Package 1 for R/3 4.5B

Active Users



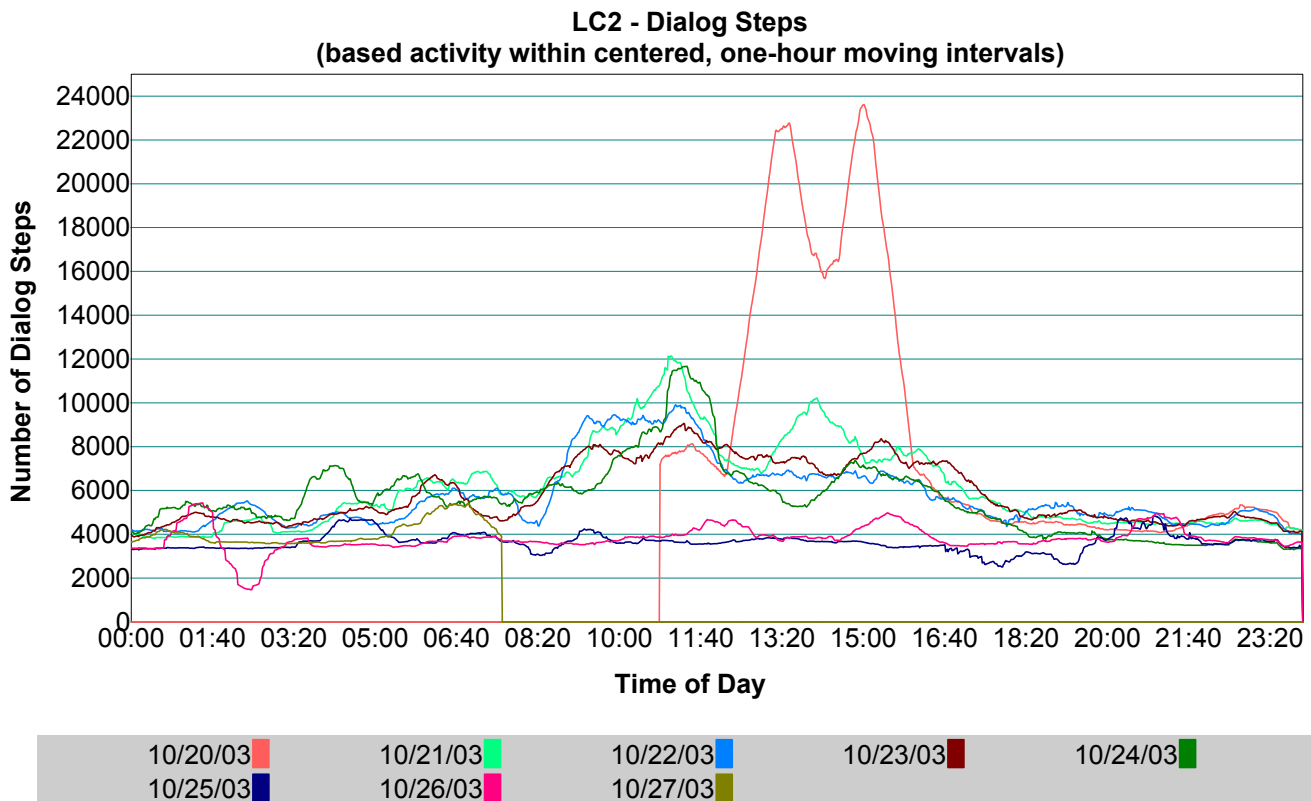
Explanation

This chart plots the number of SAP users actively working in R/3. An active user generates R/3 workload resulting in dialog steps. If a user's dialog step executes within a one minute interval, the user is considered active in that interval. Dialog step execution is determined by analyzing R/3 application server "stat" file records.

Statistics

- 24 Highest number of active users per minute at 10:19 on October 24, 2003.
- 7 Average number of active users per minute within the monitoring period.
- 196 Number of unique user IDs active during the monitoring period.

Dialog Steps



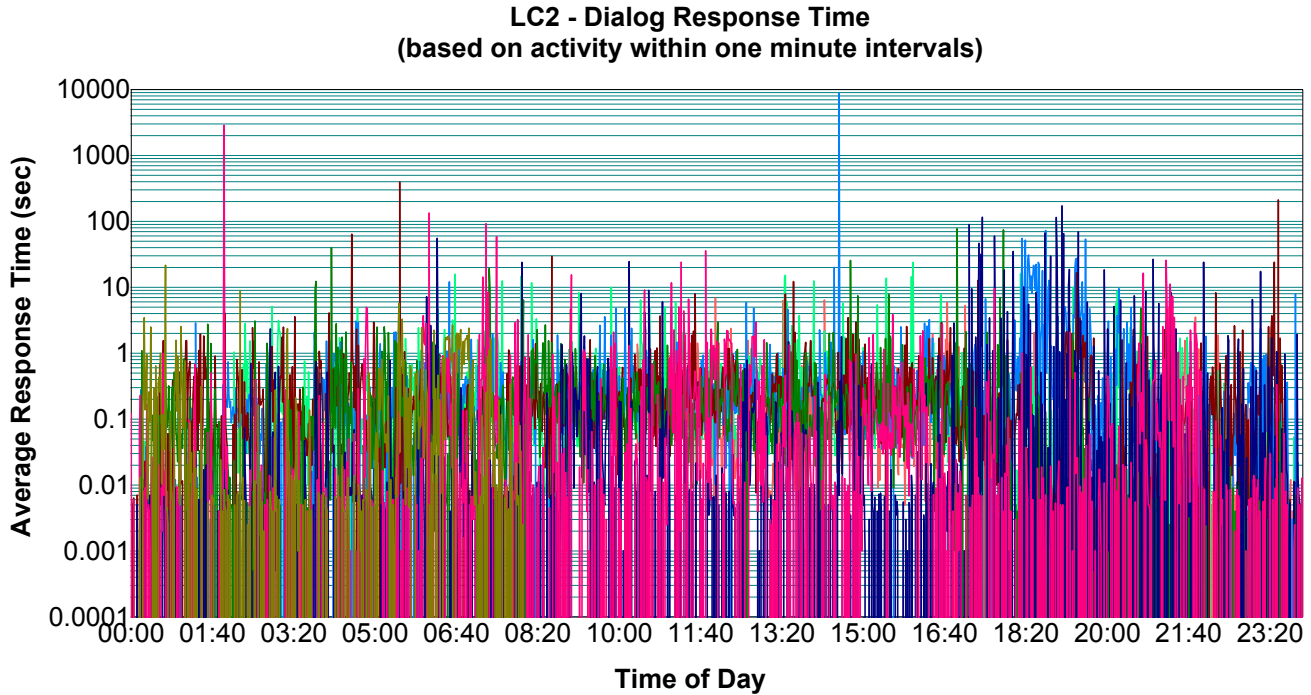
Explanation

This chart plots the number of dialog steps executing within moving, one-hour intervals. If any part of a dialog step executes within an interval, the dialog step is counted in that interval. Dialog step execution is determined by analyzing R/3 application server "stat" file records.

Statistics

- 23609 Highest number of dialog steps per hour at 15:01 on October 20, 2003.
- 5373 Average number of dialog steps per hour within the monitoring period.

Dialog Response Time



10/20/03	10/21/03	10/22/03	10/23/03	10/24/03
10/25/03	10/26/03	10/27/03		

Explanation

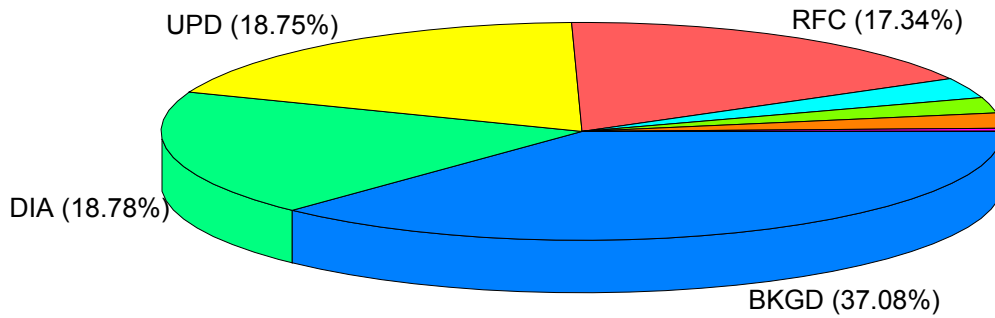
This chart plots the average response time of dialog steps, task type "DIALOG", in one minute intervals. The response times of dialog steps ending within an interval are summed and then averaged. For R/3 systems 4.6B and later, the response time includes SAPGUI time providing end-to-end response time. Dialog step response time is determined by analyzing R/3 application server "stat" file records.

Statistics

- 8860.717 (sec) Highest average response time per interval at 14:30 on October 22, 2003.
- 1.775 (sec) Average response time within the monitoring period.

Dialog Steps by Task Type

LC2 - Dialog Steps



Explanation

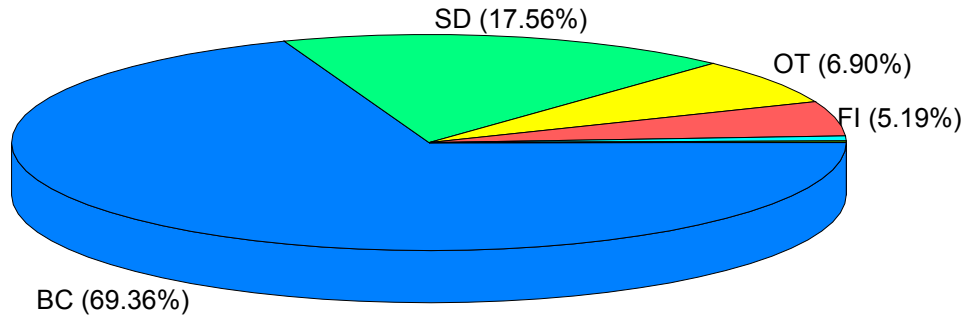
This chart represents the total number of dialog steps executed during the collection period, grouped by task type.

Statistics

Task Type	Count
BKGD	323383
DIA	163741
UPD	163505
RFC	151187
UP2	26442
SPO	20060
BUF	19817
CYCL	3879
ALE	12

Dialog Steps by Module

LC2 - Dialog Steps



Explanation

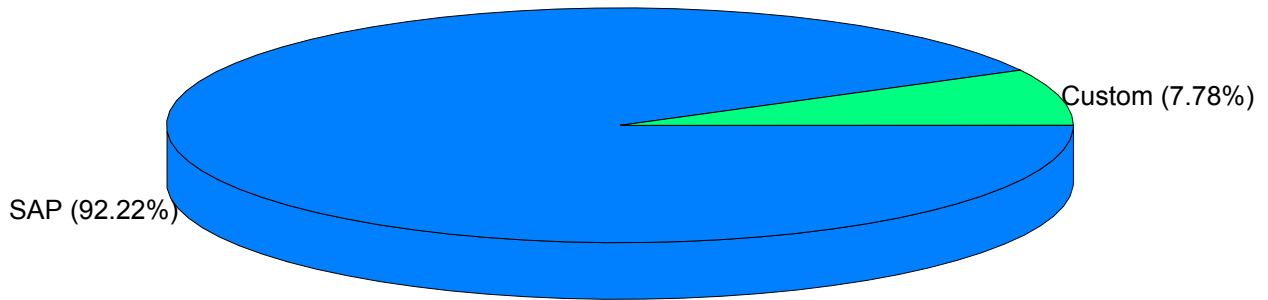
This chart represents the total number of dialog steps executed during the collection period, grouped by R/3 application module.

Statistics

Module	Count
BC	604870
SD	153112
OT	60212
FI	45287
LO	6331
LE	2173
PA	35
CO	5
PP	1

Dialog Steps by Code Type

LC2 - Dialog Steps



Explanation

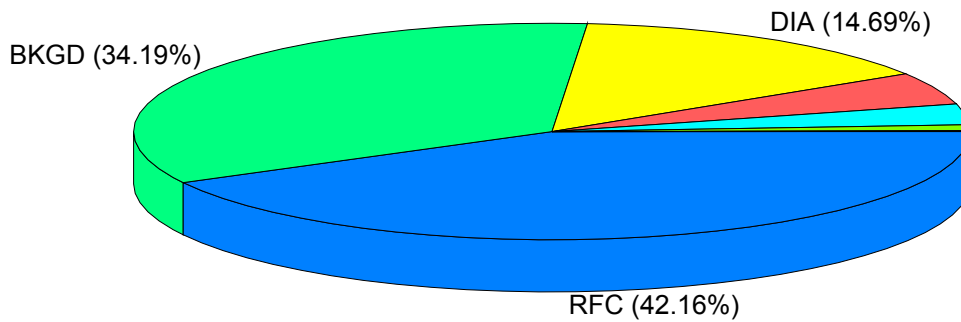
This chart represents the total number of dialog steps executed during the collection period, grouped by code type.

Statistics

Code Type	Count
SAP	804220
Custom	67806

CPU Time by Task Type

LC2 - CPU Time



Explanation

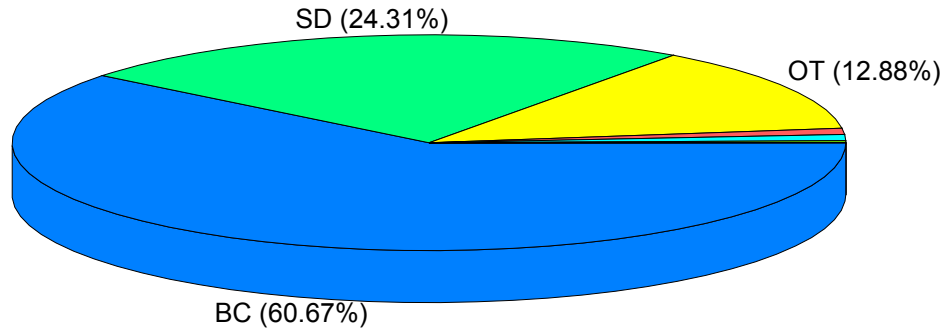
This chart represents the total application server CPU time of dialog steps executed during the collection period, grouped by task type.

Statistics

Task Type	Time (s)
RFC	72020
BKGD	58405
DIA	25089
CYCL	8290
UPD	5301
UP2	1532
SPO	115
BUF	49
ALE	4

CPU Time by Module

LC2 - CPU Time



Explanation

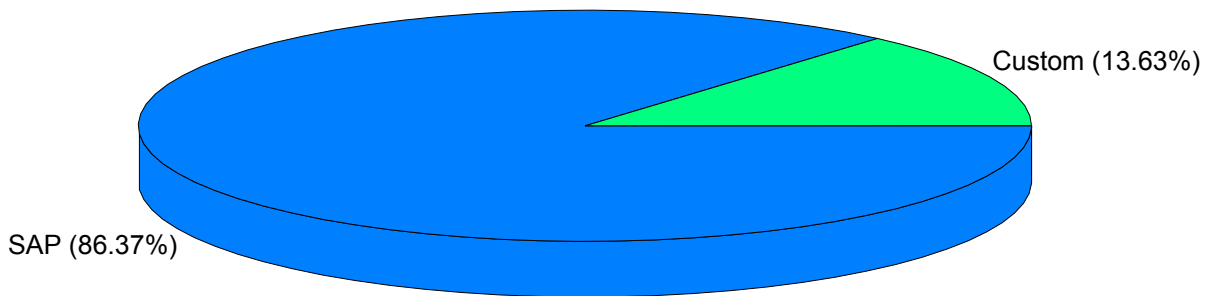
This chart represents the total application server CPU time of dialog steps executed during the collection period, grouped by R/3 application module.

Statistics

Module	Time (s)
BC	103633
SD	41520
OT	21996
FI	1602
LE	1543
LO	510
PP	6
PA	2
CO	0

CPU Time by Code Type

LC2 - CPU Time



Explanation

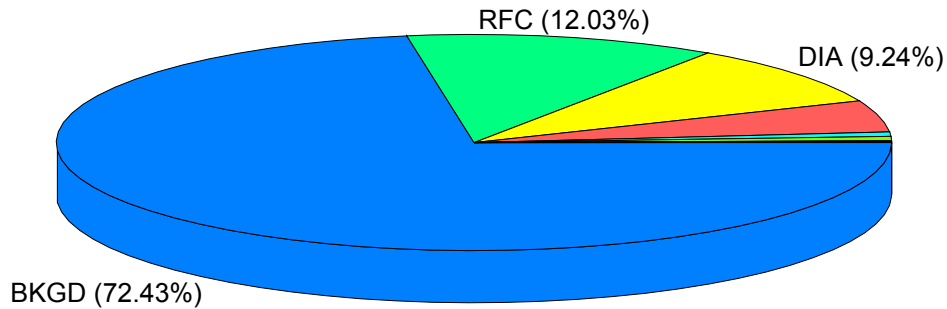
This chart represents the total application server CPU time of dialog steps executed during the collection period, grouped by code type.

Statistics

Code Type	Time (s)
SAP	147527
Custom	23285

Database Wait Time by Task Type

cg13 - Database Wait Time



Explanation

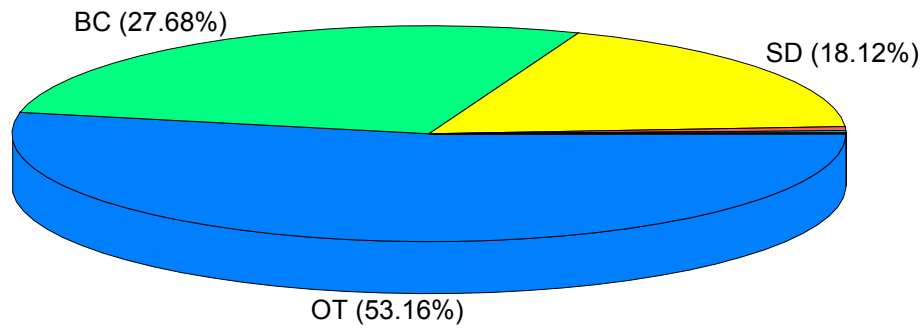
This chart represents the total database wait time of dialog steps executed during the collection period, grouped by task type.

Statistics

Task Type	Time (s)
BKGD	286451
RFC	47593
DIA	36552
UPD	18698
UP2	2561
CYCL	2528
BUF	582
SPO	496
ALE	3

Database Wait Time by Module

cg13 - Database Wait Time



Explanation

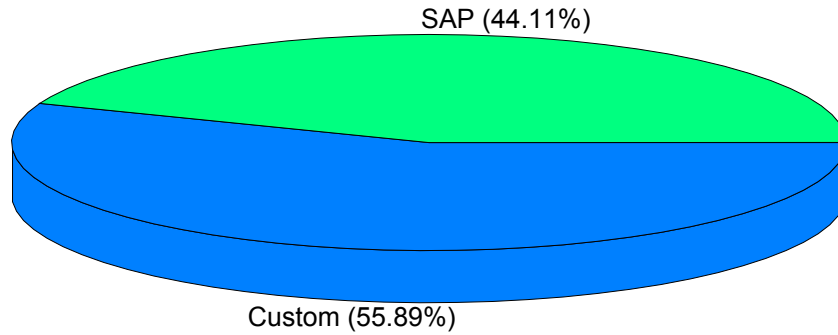
This chart represents the total database wait time of dialog steps executed during the collection period, grouped by R/3 application module.

Statistics

Module	Time (s)
OT	210228
BC	109459
SD	71659
FI	2388
LO	1167
LE	546
PP	11
PA	6
CO	0

Database Wait Time by Code Type

cgn13 - Database Wait Time



Explanation

This chart represents the total database wait time of dialog steps executed during the collection period, grouped by code type.

Statistics

Code Type	Time (s)
Custom	221018
SAP	174446

Top Transactions by Number of Dialog Steps

Steps	%	Module	TCode/Report
151199	17.3	BC	SAPMSSY1
137738	15.8	BC	RSM13000
103268	11.8	BC	SAPMSSY2
82582	9.5	BC	RSBTCRTE
53029	6.1	SD	RV60SBT1
34516	4.0	FI	XD02
31388	3.6	OT	ZV60SBAT
25109	2.9	SD	VA03
21256	2.4	SD	VA01
20060	2.3	BC	RSPOWP00
19817	2.3	BC	<BUFFER SYNC>
16648	1.9	SD	SDBILLDL
13610	1.6	BC	<NO BUFFER>
12863	1.5	BC	SA38
12763	1.5	SD	VA02
11598	1.3	BC	SAPMSYST
10309	1.2	OT	ZSNAST00
9810	1.1	BC	<ADM MESSAGE>
6319	0.7	OT	/BIN/KSH
5853	0.7	BC	SO01
5845	0.7	FI	VD03
5296	0.6	BC	SE38
4556	0.5	SD	VF03
3881	0.4	BC	SM37
3879	0.4	BC	SAPMSSY6
3749	0.4	BC	SE37
3410	0.4	SD	VA21
2969	0.3	BC	SE16
2951	0.3	SD	RV60SBAT
2769	0.3	BC	RBDAPP01
2454	0.3	BC	WE02
2136	0.2	FI	VD01
2049	0.2	LO	MM03

Top Transactions by Application Server CPU Time

Time (s)	%	Steps	Avg (s)	Module	TCode/Report
72028	42.2	151199	0.5	BC	SAPMSSY1
14685	8.6	53029	0.3	SD	RV60SBT1
10117	5.9	16648	0.6	SD	SDBILLDL
9056	5.3	31388	0.3	OT	ZV60SBAT
8290	4.9	3879	2.1	BC	SAPMSSY6
7111	4.2	21256	0.3	SD	VA01
4369	2.6	82582	0.1	BC	RSBTCRTE
3395	2.0	137738	0.0	BC	RSM13000
2607	1.5	12763	0.2	SD	VA02
2357	1.4	38	62.0	BC	SPAD
2112	1.2	217	9.7	OT	ZRV50SBT1
2107	1.2	5853	0.4	BC	SO01
2078	1.2	25109	0.1	SD	VA03
2049	1.2	2769	0.7	BC	RBDAPP01
1898	1.1	974	1.9	BC	RSCONN01
1637	1.0	2951	0.6	SD	RV60SBAT
1534	0.9	12863	0.1	BC	SA38
1489	0.9	653	2.3	OT	ZJBSPL01
1397	0.8	10309	0.1	OT	ZSNAST00
1306	0.8	103268	0.0	BC	SAPMSSY2
1212	0.7	132	9.2	LE	VL04
1056	0.6	1437	0.7	OT	ZLVZCTR6
1019	0.6	8	127.5	OT	ZBLK86CL
869	0.5	7	124.2	OT	ZRSP01041
771	0.5	238	3.2	BC	BD87
716	0.4	34516	0.0	FI	XD02
608	0.4	5296	0.1	BC	SE38
530	0.3	1792	0.3	SD	RSNAST00
446	0.3	611	0.7	SD	VKM4
428	0.3	1163	0.4	SD	VA43
391	0.2	217	1.8	OT	ZJBSPL04
389	0.2	2454	0.2	BC	WE02
340	0.2	41	8.3	BC	SP01

Top Transactions by Database Wait Time

Time (s)	%	Steps	Avg (s)	Module	TCode/Report
48641	12.3	106	458.9	OT	ZLODSQTN
47596	12.0	151199	0.3	BC	SAPMSSY1
40486	10.2	1437	28.2	OT	ZLVZCTR6
23210	5.9	53029	0.4	SD	RV60SBT1
20203	5.1	16648	1.2	SD	SDBILLDL
12502	3.2	60	208.4	OT	ZLSR_ENTITLEMENT_UPDATE
10975	2.8	160	68.6	OT	ZORDERRO
10716	2.7	21256	0.5	SD	VA01
10452	2.6	31388	0.3	OT	ZV60SBAT
10233	2.6	163	62.8	OT	ZLVEDI01
9631	2.4	39	247.0	OT	ZSUPLTRT
8455	2.1	974	8.7	BC	RSCONN01
8446	2.1	54	156.4	OT	ZLODSICU
8122	2.1	137738	0.1	BC	RSM13000
7707	1.9	12863	0.6	BC	SA38
7654	1.9	653	11.7	OT	ZJBSPL01
6623	1.7	82582	0.1	BC	RSBTCRTE
6495	1.6	2769	2.3	BC	RBDAPP01
6015	1.5	100	60.2	OT	ZSOUTPUT
5975	1.5	217	27.5	OT	ZRV50SBT1
4998	1.3	103268	0.0	BC	SAPMSSY2
4427	1.1	25109	0.2	SD	VA03
4316	1.1	5296	0.8	BC	SE38
3908	1.0	10309	0.4	OT	ZSNAST00
3677	0.9	52	70.7	OT	ZICI_RECON_REPORT
3261	0.8	105	31.1	OT	ZEMEAACK
3016	0.8	874	3.5	OT	ZTGEDIWF
2869	0.7	2951	1.0	SD	RV60SBAT
2527	0.6	3879	0.7	BC	SAPMSSY6
2425	0.6	12763	0.2	SD	VA02
1900	0.5	611	3.1	SD	VKM4
1852	0.5	27	68.6	OT	ZLIFSKCL
1831	0.5	6	305.3	OT	ZSMPUPDT_ZSZ6

Top Transactions by Memory Consumption

Memory (MB)	%	Steps	Avg (MB)	Module	TCode/Report
132084	21.0	25109	5.3	SD	VA03
114085	18.2	151199	0.8	BC	SAPMSSY1
109457	17.4	21256	5.1	SD	VA01
37532	6.0	5853	6.4	BC	SO01
33100	5.3	12863	2.6	BC	SA38
28674	4.6	12763	2.2	SD	VA02
16110	2.6	5296	3.0	BC	SE38
14974	2.4	4556	3.3	SD	VF03
14477	2.3	3749	3.9	BC	SE37
9802	1.6	5845	1.7	FI	VD03
9155	1.5	2049	4.5	LO	MM03
8577	1.4	2454	3.5	BC	WE02
5965	0.9	11598	0.5	BC	SAPMSYST
5950	0.9	2969	2.0	BC	SE16
5150	0.8	1084	4.8	SD	VF02
4591	0.7	1163	3.9	SD	VA43
4551	0.7	3881	1.2	BC	SM37
4550	0.7	754	6.0	SD	VA23
4141	0.7	880	4.7	SD	VA22
3568	0.6	987	3.6	BC	WE05
3429	0.5	478	7.2	LE	VL03
3096	0.5	3410	0.9	SD	VA21
2965	0.5	924	3.2	LE	VL01
2875	0.5	874	3.3	LO	MCSI
2863	0.5	2136	1.3	FI	VD01
2634	0.4	611	4.3	SD	VKM4
2572	0.4	219	11.7	BC	ST03
2490	0.4	1016	2.5	FI	F-28
2480	0.4	1403	1.8	SD	VK13
2300	0.4	820	2.8	LO	MM02
2189	0.3	1086	2.0	OT	ZORD
1733	0.3	3879	0.4	BC	SAPMSSY6
1555	0.2	551	2.8	SD	VA41

Top Transactions by Average Dialog Response Time

Avg (s)	Steps	Time (s)	Module	TCode/Report
4754.761	41	194945	BC	SM51
85.198	3	255	BC	STAT
78.861	38	2996	BC	SPAD
28.582	13	371	BC	SM39
22.672	1	22	FI	FBL3
22.205	31	688	FI	FBL5
18.815	1	18	PP	CA03
13.625	41	558	BC	SP01
11.653	14	163	OT	ZMTE
11.045	24	265	BC	DB12
9.822	131	1286	LE	VL04
7.636	14	106	BC	SART
6.209	371	2303	SD	VKM4
6.181	4	24	BC	SWEL
5.559	238	1323	BC	BD87
4.838	10	48	OT	YS01
4.403	319	1404	OT	ZDEL
3.987	4	15	FI	FS10
3.447	3	10	BC	SWEC
3.422	9	30	SD	VTAA
3.330	78	259	BC	ST06
2.813	2	5	OT	ZCTR
2.760	56	154	LO	MMPV
2.756	1	2	LE	V_UC
2.437	59	143	OT	ZMME
2.358	153	360	OT	ZMTN
2.167	1	2	BC	RE_RHXSTR00
1.986	68	135	OT	ZMAE
1.962	254	498	LO	MM04
1.526	77	117	OT	ZWCTR
1.520	1	1	BC	PFCG
1.469	318	467	BC	STMS
1.300	219	284	BC	ST03

Top Users by Number of Dialog Steps

Steps	%	User ID
171956	19.7	SAPSYS
134512	15.4	LOTEMBIL
102379	11.7	LOTNABAT
76437	8.8	LOTSIBIL
66326	7.6	SYSTEM_SUP
38324	4.4	LOTNABIL
30992	3.6	WF-BATCH
23989	2.8	MAESTROCPIC
22743	2.6	LOTNAWF
19439	2.2	ZL_ORMNAD_AM
16235	1.9	LOTAZBIL
14980	1.7	LOTJAEDI
9368	1.1	ZL_ORMNAD_EM
5723	0.7	ZL_MTADSU_EM
4618	0.5	ZL_ORMNSU_EM
4588	0.5	ZL_REVOPS_EM
4402	0.5	SGCA5022
4311	0.5	ZL_ORMNSU_JP
4243	0.5	ZL_CTADMN_EM
4076	0.5	KKRAUSE
4048	0.5	ZL_ORMNSU_AM
3682	0.4	ZL_FISUP_AM
3551	0.4	ZL_ORMNAD_AP
3507	0.4	JMONAHAN
3085	0.4	DDIC
3066	0.4	JBUCKLEY
3007	0.3	MQCPIC
2907	0.3	ZL_ORMNSU_AP
2876	0.3	KBROWN
2659	0.3	ZL_CSTCAR_AM
2603	0.3	MGIBEAULT
2502	0.3	LOTGMBAPAC
2403	0.3	LOTNAEDI

Top Users by Application Server CPU Time

Time (s)	%	Steps	Avg (s)	User ID
34564	20.2	3085	11.2	DDIC
20113	11.8	30992	0.6	WF-BATCH
17607	10.3	134512	0.1	LOTEMBIL
15678	9.2	102379	0.2	LOTNABAT
12996	7.6	76437	0.2	LOTSIBIL
12898	7.6	66326	0.2	SYSTEM_SUP
9841	5.8	171956	0.1	SAPSYS
6404	3.7	38324	0.2	LOTNABIL
3164	1.9	19439	0.2	ZL_ORMNAD_AM
2929	1.7	1329	2.2	HCHITALIA
2555	1.5	4311	0.6	ZL_ORMNSU_JP
2553	1.5	9368	0.3	ZL_ORMNAD_EM
2417	1.4	23989	0.1	MAESTROCPIC
2317	1.4	14980	0.2	LOTJAEDI
1513	0.9	2364	0.6	WOSBP
1295	0.8	3007	0.4	MQCPIC
1249	0.7	22743	0.1	LOTNAWF
1141	0.7	4048	0.3	ZL_ORMNSU_AM
1058	0.6	16235	0.1	LOTAZBIL
1055	0.6	4618	0.2	ZL_ORMNSU_EM
972	0.6	4243	0.2	ZL_CTADMN_EM
887	0.5	142	6.3	JBISHOP
809	0.5	2876	0.3	KBROWN
761	0.4	1540	0.5	EBUSINESS
702	0.4	3551	0.2	ZL_ORMNAD_AP
607	0.4	4076	0.1	KKRAUSE
495	0.3	3507	0.1	JMONAHAN
480	0.3	4588	0.1	ZL_REVOPS_EM
458	0.3	1177	0.4	ZL_CRANA_EM
444	0.3	2603	0.2	MGIBEAULT
426	0.2	521	0.8	ZL_CSAPAD_AM
424	0.2	1439	0.3	MCEFALO
392	0.2	2103	0.2	STANG

Top Users by Database Wait Time

Time (s)	%	Steps	Avg (s)	User ID
205938	52.1	102379	2.0	LOTNABAT
26139	6.6	76437	0.3	LOTSIBIL
24163	6.1	134512	0.2	LOTEMBIL
20718	5.2	30992	0.7	WF-BATCH
18103	4.6	3085	5.9	DDIC
12738	3.2	23989	0.5	MAESTROCPIC
9219	2.3	38324	0.2	LOTNABIL
8851	2.2	171956	0.1	SAPSYS
5245	1.3	2403	2.2	LOTNAEDI
5094	1.3	9368	0.5	ZL_ORMNAD_EM
4490	1.1	19439	0.2	ZL_ORMNAD_AM
4050	1.0	16235	0.2	LOTAZBIL
3619	0.9	14980	0.2	LOTJAEDI
3170	0.8	996	3.2	PAEMAIL
2037	0.5	1177	1.7	ZL_CRANA_EM
1731	0.4	149	11.6	EKWOK
1532	0.4	3551	0.4	ZL_ORMNAD_AP
1529	0.4	3007	0.5	MQCPIC
1489	0.4	1887	0.8	LOTSIEDI
1464	0.4	521	2.8	ZL_CSAPAD_AM
1368	0.3	22743	0.1	LOTNAWF
1345	0.3	4048	0.3	ZL_ORMNSU_AM
1317	0.3	66326	0.0	SYSTEM_SUP
1292	0.3	2603	0.5	MGIBEAULT
1156	0.3	1658	0.7	KPINTO
1140	0.3	4618	0.2	ZL_ORMNSU_EM
961	0.2	4243	0.2	ZL_CTADMN_EM
959	0.2	3066	0.3	JBUCKLEY
950	0.2	1995	0.5	TMSADM
914	0.2	4311	0.2	ZL_ORMNSU_JP
836	0.2	927	0.9	DBEAULIEU
827	0.2	4076	0.2	KKRAUSE
756	0.2	510	1.5	LROBICHAUX

Top Users by Memory Consumption

Memory (MB)	%	Steps	Avg (MB)	User ID
99482	15.8	19439	5.1	ZL_ORMNAD_AM
44192	7.0	9368	4.7	ZL_ORMNAD_EM
43603	6.9	66326	0.7	SYSTEM_SUP
30046	4.8	3682	8.2	ZL_FISUP_AM
27282	4.3	30992	0.9	WF-BATCH
18481	2.9	23989	0.8	MAESTROCPIC
17323	2.8	4618	3.8	ZL_ORMNSU_EM
16704	2.7	4311	3.9	ZL_ORMNSU_JP
16660	2.7	4048	4.1	ZL_ORMNSU_AM
15991	2.5	4402	3.6	SGCA5022
15982	2.5	3551	4.5	ZL_ORMNAD_AP
15092	2.4	4076	3.7	KKRAUSE
12903	2.1	4588	2.8	ZL_REVOPS_EM
12166	1.9	2603	4.7	MGIBEAULT
10932	1.7	2876	3.8	KBROWN
10475	1.7	3507	3.0	JMONAHAN
10347	1.6	3066	3.4	JBUCKLEY
8468	1.3	2393	3.5	KCHARTRAND
7546	1.2	2379	3.2	ZL_MTADSU_AP
6997	1.1	4243	1.6	ZL_CTADMN_EM
6991	1.1	22743	0.3	LOTNAWF
6847	1.1	1337	5.1	ZL_BILADM_AM
6792	1.1	2907	2.3	ZL_ORMNSU_AP
6780	1.1	102379	0.1	LOTNABAT
5912	0.9	1750	3.4	GRUGGIERO
5454	0.9	1658	3.3	KPINTO
5319	0.8	5723	0.9	ZL_MTADSU_EM
4920	0.8	1770	2.8	ZL_BILADM_AP
4872	0.8	2103	2.3	STANG
4770	0.8	3007	1.6	MQCPIC
4337	0.7	1257	3.5	MLOMBA
4178	0.7	1126	3.7	ZL_CSTCAR_JP
3896	0.6	1530	2.5	KNISHI

Top Users by Average Dialog Response Time

Avg (s)	Steps	Time (s)	User ID
197.957	985	194987	SYSTEM_SUP
12.799	147	1881	EKWOK
4.761	224	1066	NMETROPOULOS
3.690	515	1900	ZL_CSAPAD_AM
3.234	1279	4137	HCHITALIA
2.984	821	2450	ZL_CRANA_EM
2.897	112	324	ZL_LOTNA_BT
2.128	221	470	BALCOTT
2.093	366	766	ZL_RECCK_EM
2.086	270	563	ZL_FTADM_AP
1.896	860	1631	DBEAULIEU
1.791	117	209	JBISHOP
1.713	99	169	ZL_MMCA_EM
1.382	243	336	ZLIANG
1.374	300	412	ABARKUS
1.348	114	153	DTATONE
1.138	165	187	DCCA6354
1.126	164	184	ZL_CRANA_AZ
0.947	407	385	LROBICHAUX
0.938	117	109	KHUDZIK
0.883	3350	2958	ZL_ORMNAD_AP
0.865	3985	3447	ZL_ORMNSU_JP
0.824	1640	1352	KPINTO
0.801	3332	2671	ZL_ORMNSU_AM
0.734	126	92	ZL_MMCMSU_AM
0.729	262	191	ZL_CRANA_AP
0.687	2509	1725	MGIBEAULT
0.674	1222	824	RBISSONNETTE
0.643	1436	923	MCEFALO
0.632	58	36	HCHITALIA2
0.627	2757	1730	ZL_ORMNSU_AP
0.600	145	87	RANDERSON2
0.597	2572	1537	KBROWN

Instance List

Instance	DB Host	Work Process Type(s)
cgn13_LC2_00	cgn13	Dialog Update Enqueue Backg. Spool Upd2
cgn15_LC2_00	cgn13	Dialog Update Backg. Spool Upd2

Instance Information - cgn13_LC2_00

R/3 Instance Information

Host Name: cgn13
Database Host: cgn13
Database ID: LC2
SAP Release: 45B
SAP Kernel: 45B
Work Processes: Dialog Update Enqueue Backg. Spool Upd2

R/3 Kernel Information

Kernel Release: 45B
Patch Level: 873
Compile Environment: AIX 2 4 004218294C00
Compile Date: Mar 10 2003 04:15:52
Database Library: DB6_61_SHARED

SAPOSCOL Information

Collector Version: COLL 20.77 02/05/06 620 - AIX v4.08 5L-32 bit 030206
Operating System: AIX cgn13 1 5 000207084C00
Start: Mon Sep 22 01:18:03 2003
Interval: 10 sec
Last Update: Mon Oct 20 10:23:02 2003

Instance Information - cgn15_LC2_00

R/3 Instance Information

Host Name:	cgn15
Database Host:	cgn13
Database ID:	LC2
SAP Release:	45B
SAP Kernel:	45B
Work Processes:	Dialog Update Backg. Spool Upd2

R/3 Kernel Information

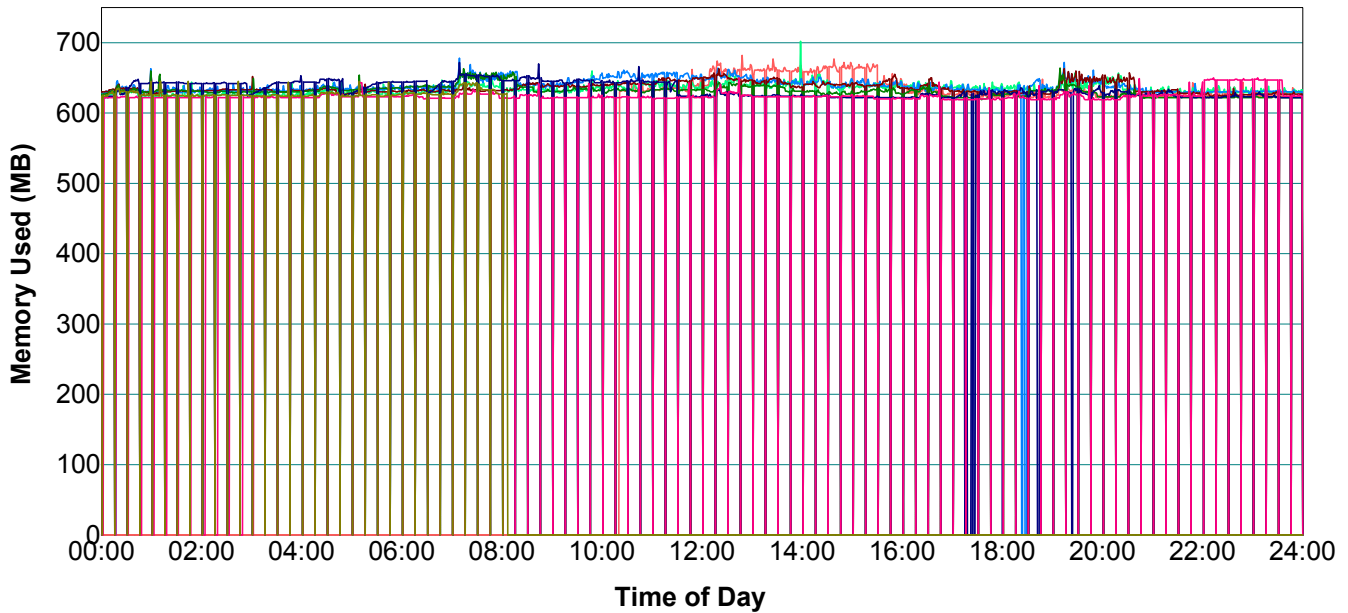
Kernel Release:	45B
Patch Level:	873
Compile Environment:	AIX 2 4 004218294C00
Compile Date:	Mar 10 2003 04:15:52
Database Library:	DB6_61_SHARED

SAPOSCOL Information

Collector Version:	COLL 20.77 02/05/06 620 - AIX v4.08 5L-32 bit 030206
Operating System:	AIX cgn15 1 5 000209964C00
Start:	Mon Sep 22 01:25:34 2003
Interval:	10 sec
Last Update:	Mon Oct 20 10:22:59 2003

Memory Utilization - cgn13_LC2_00

cgn13_LC2_00 - Instance Memory Utilization
(based on activity within one minute intervals)



Explanation

This chart plots the amount of memory used by the R/3 instance during the collection period.

Data points represent the sum of:

- total work process size
- total SAP executable size
- buffer space used
- roll area used
- extended memory used
- heap memory used

This chart does not represent total memory utilization on the host.

Statistics

702 (MB) Peak instance memory utilization.

Buffer Statistics - cgn13_LC2_00

Buffer Name	Buffer Hit Ratio (%)	Database Quality (%)	Free Space (%)	Free Entries (%)	Object Swaps
Short NameTab	99.99	100.00	87.67	94.13	0
CUA	99.99	99.99	9.39	51.52	0
Initial Record	99.99	99.99	66.16	86.03	0
Generic Key	99.98	99.91	3.85	38.29	108
Field Description	99.98	99.98	12.66	87.75	9581
Screen	99.97	99.97	55.19	94.40	1631
ABAP Program	99.96	99.95	3.28	92.32	22885
Table Definition	99.84	99.84	56.69	56.93	0
Calendar	99.53	99.98	97.07	87.50	0
Single Record	99.53	100.00	26.06	63.75	0
Export/Import	99.52	100.00	52.81	25.25	0

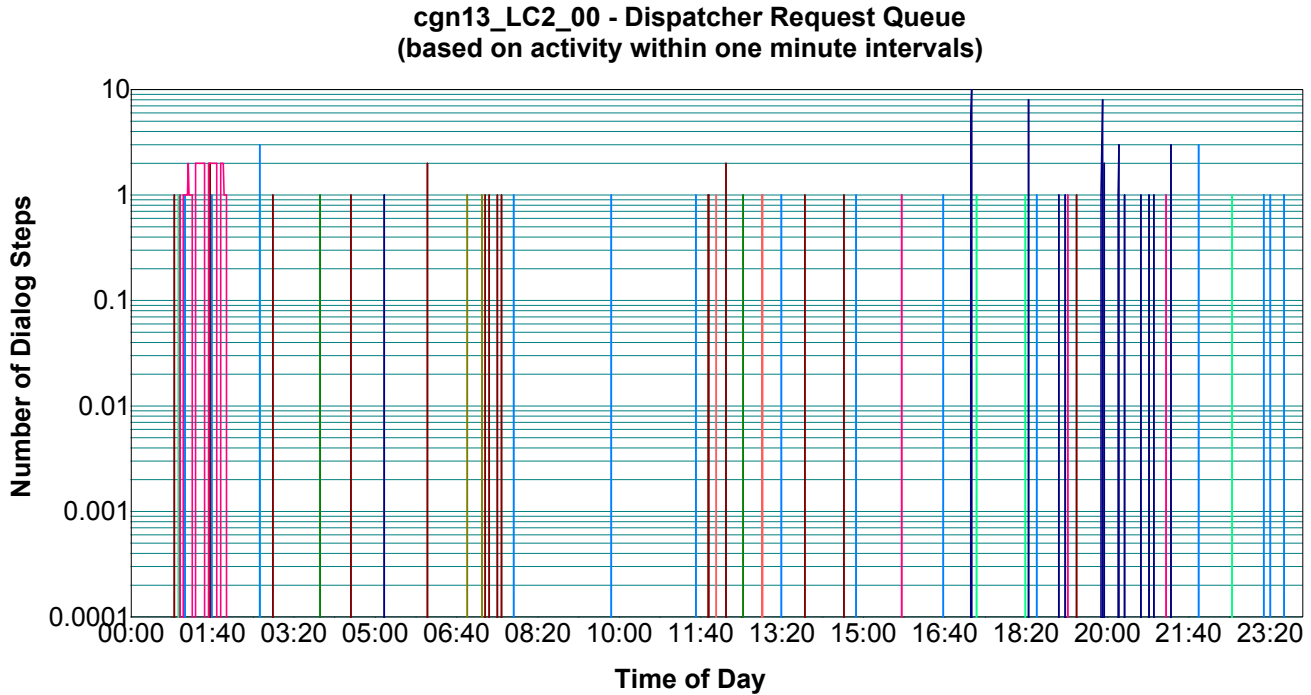
Memory	Size (KB)	Max Used (KB)	Max Used (%)
Roll Area	262144	32152	12
Paging Area	768000	27688	3
Extended Memory	40995840	1047552	2
Heap Memory	120024064	0	0

Work Process Type	Accumulated CPU Time (dd:hh:mm:ss)
Dialog	01:04:41:55
Update	00:01:41:44
Enqueue	00:00:14:05
Background	00:00:00:00
Spool	00:00:04:55
Update2	00:00:47:24

Top Table Statistics - cgn13_LC2_00

Table Name	Total Count	Direct Count	Direct Quality (%)	Sequential Count	Sequential Quality (%)
DDNTF	797375679	797359214	100.00	16465	0.00
DDNTT	454956309	454956309	99.96	0	100.00
CDPOS	88868309	0	100.00	88868309	0.00
VEDA	80842002	80490059	0.00	351943	0.00
MASSVARDAT	64896347	0	100.00	64896347	100.00
DDFTX	53255951	52015160	99.97	1240791	99.84
ALCONSEG	34856402	16913139	100.00	17943263	100.00
STXH	15615499	484044	0.00	15131455	0.00
KONP	15514365	1615	0.00	15512750	0.00
KONH	15264847	15264545	0.00	302	0.00
TCURX	12489550	12488541	100.00	1009	99.90
CDHDR	11046796	0	100.00	11046796	0.00
USR12	10934295	10934293	99.71	2	0.00
T681	10463208	10454474	100.00	8734	100.00
KNA1	8233132	6276567	0.00	1956565	0.00
TMODU	6634607	0	100.00	6634607	100.00
VBPA	6370798	1480203	0.00	4890595	0.00
VARI	6050283	144711	0.00	5905572	86.47
TOJTB	5880016	604125	100.00	5275891	100.00
D010S	5846683	5832849	0.00	13834	0.00
D010SINF	5834413	5834413	0.00	0	100.00
VBAK	5497670	5188875	0.00	308795	0.00
D342L	5492349	0	100.00	5492349	99.97
KNVP	5099512	224	0.00	5099288	0.00
AUSP	4857595	0	100.00	4857595	0.00
CABN	4855628	0	100.00	4855628	0.00
TSP01	4286622	4286240	0.00	382	0.00
KONV	4252682	0	100.00	4252682	0.00
BKPF	4151165	156386	0.00	3994779	0.00
KNVV	4015637	2152705	0.00	1862932	0.00
ZT001	3960438	3960428	100.00	10	100.00
T100	3901763	3898551	99.76	3212	0.00

Work Process Statistics - cgn13_LC2_00



10/20/03	10/21/03	10/22/03	10/23/03	10/24/03
10/25/03	10/26/03	10/27/03		

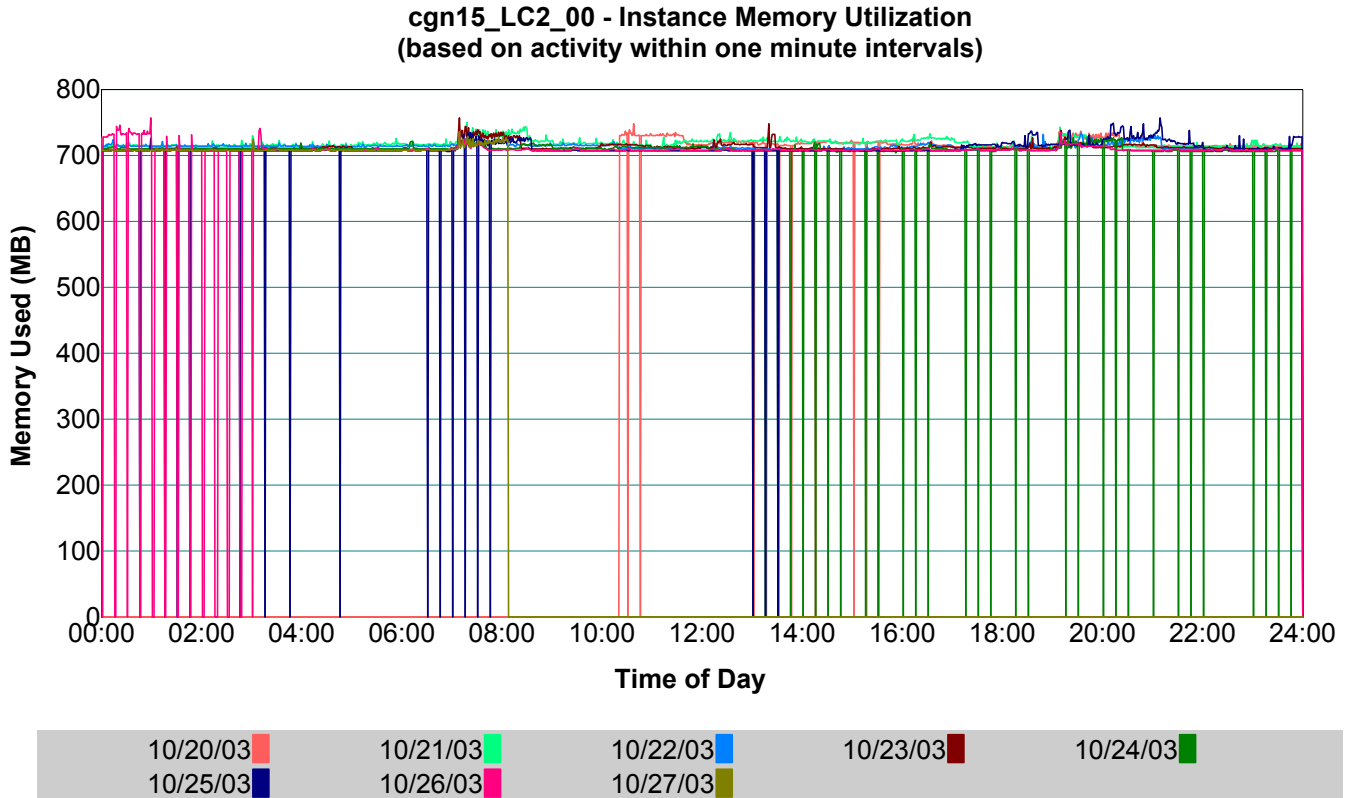
Explanation

This chart plots the number of queued dialog steps waiting to be dispatched to a work process for processing.

Statistics

Work Process Type	Peak Count
Dispatcher	3
Dialog	9
Update	11
Enqueue	2
Background	1
Spool	1
Update2	0

Memory Utilization - cgn15_LC2_00



Explanation

This chart plots the amount of memory used by the R/3 instance during the collection period.

Data points represent the sum of:

- total work process size
- total SAP executable size
- buffer space used
- roll area used
- extended memory used
- heap memory used

This chart does not represent total memory utilization on the host.

Statistics

757 (MB) Peak instance memory utilization.

Buffer Statistics - cgn15_LC2_00

Buffer Name	Buffer Hit Ratio (%)	Database Quality (%)	Free Space (%)	Free Entries (%)	Object Swaps
Generic Key	99.99	99.97	28.97	21.10	4
Short NameTab	99.99	99.99	88.47	94.68	0
Initial Record	99.99	99.99	75.02	89.30	0
CUA	99.99	99.99	49.06	74.88	0
Field Description	99.98	99.98	0.48	83.45	71
ABAP Program	99.97	99.97	3.09	92.99	4861
Screen	99.95	99.95	64.17	95.47	514
Table Definition	99.78	99.79	67.89	67.88	0
Single Record	99.58	100.00	81.84	71.00	0
Calendar	99.44	99.97	97.07	87.50	0
Export/Import	70.98	100.00	90.07	86.63	0

Memory	Size (KB)	Max Used (KB)	Max Used (%)
Roll Area	786432	18096	2
Paging Area	1572864	12752	0
Extended Memory	11489280	1605632	13
Heap Memory	80354304	12660736	15

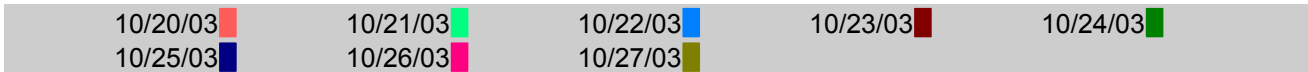
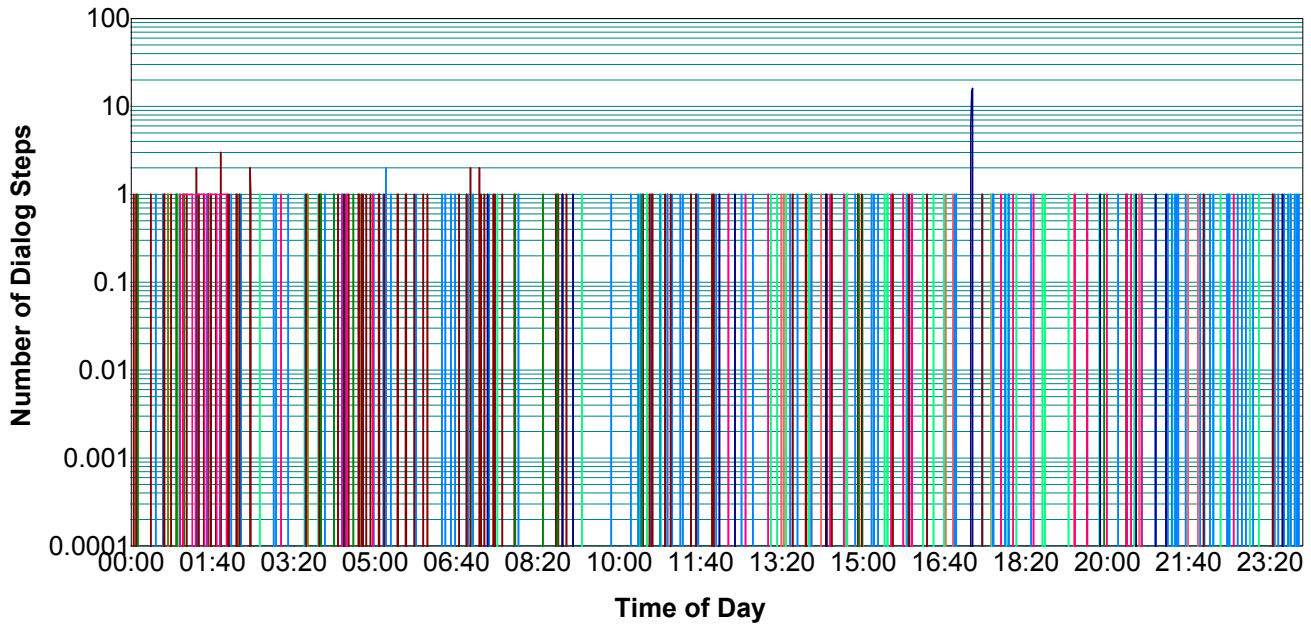
Work Process Type	Accumulated CPU Time (dd:hh:mm:ss)
Dialog	00:16:41:59
Update	00:00:46:03
Enqueue	00:00:00:00
Background	00:00:00:00
Spool	00:00:03:37
Update2	00:01:01:25

Top Table Statistics - cgn15_LC2_00

Table Name	Total Count	Direct Count	Direct Quality (%)	Sequential Count	Sequential Quality (%)
DDNTF	412307127	412299992	100.00	7135	0.00
DDNTT	196110757	196110757	99.94	0	100.00
MASSVARDAT	24837250	0	100.00	24837250	100.00
VEDA	24670872	24544303	0.00	126569	0.00
KONP	19986210	533	0.00	19985677	0.00
DDFTX	19911071	19314441	99.99	596630	99.95
KONH	19856627	19856194	0.00	433	0.00
STXH	19794116	340251	0.00	19453865	0.00
ALCONSEG	17283051	7955774	100.00	9327277	100.00
TCURX	13950541	13949659	100.00	882	99.89
ZT001	6277819	6277818	100.00	1	100.00
T002T	6112464	6112439	100.00	25	0.00
TOJTB	5419461	340858	99.99	5078603	100.00
VBPA	4885109	502445	0.00	4382664	0.00
KONV	4722208	0	100.00	4722208	0.00
KONM	4708233	0	100.00	4708233	0.57
KNVP	4300446	308	0.00	4300138	0.00
VARI	4029664	76426	0.00	3953238	92.42
TVKOT	3953849	3953777	100.00	72	100.00
USR12	3953524	3953524	99.65	0	100.00
TVTWT	3929936	3929911	100.00	25	100.00
TCURF	3740529	0	100.00	3740529	100.00
KNA1	2797768	680365	0.00	2117403	0.00
TMODU	2408050	0	100.00	2408050	100.00
JEST	2385063	0	100.00	2385063	0.00
KNVV	2371288	252284	0.00	2119004	0.00
D010SINF	2360238	2360238	0.00	0	100.00
D010S	2358712	2355611	0.00	3101	0.00
JSTO	2292663	2292663	0.00	0	100.00
T681	2107325	2102835	99.98	4490	99.91
TSP01	2075404	2075192	0.00	212	0.00
VBAK	1932128	1898647	0.00	33481	0.00

Work Process Statistics - cgn15_LC2_00

cgn15_LC2_00 - Dispatcher Request Queue
(based on activity within one minute intervals)



Explanation

This chart plots the number of queued dialog steps waiting to be dispatched to a work process for processing.

Statistics

Work Process Type	Peak Count
Dispatcher	2
Dialog	2
Update	16
Enqueue	0
Background	0
Spool	1
Update2	0

Host List

Host	Vendor	Model	CPU	MHz	Memory	OS
cgn13	IBM	Power3	4	450	8388	AIX
cgn15	IBM	Power3	4	450	8388	AIX

Host Information - cgn13

Host Information

Machine Vendor:	IBM	<customer input>
Machine Model:	Power3_SMP_Wid	<customer input>
Machine ID:	320	
Processor Count:	4	
Processor Speed:	450 MHz	<customer input>
Physical Memory:	8388 MB	
Swap Space:	9371 MB	
Disk Space:	790 GB	
Operating System:	AIX	
IP Address:	9.56.234.142	
Code Page:	8000	
Integer Type:	BIG	
Float Type:	IE3	
Time Zone:	-18000	

Host Information - cgn15

Host Information

Machine Vendor:	IBM	<customer input>
Machine Model:	Power3_SMP_Wid	<customer input>
Machine ID:	320	
Processor Count:	4	
Processor Speed:	450 MHz	<customer input>
Physical Memory:	8388 MB	
Swap Space:	9371 MB	
Disk Space:	46 GB	
Operating System:	AIX	
IP Address:	9.56.234.141	
Code Page:	8000	
Integer Type:	BIG	
Float Type:	IE3	
Time Zone:	-18000	

Host Top Processes - cgn13

Time	User	PID	Command
9999:59	root	16388	wait
9999:59	root	40970	wait
9999:59	root	32776	wait
9999:59	root	24582	wait
3013:47	lc2adm	1310750	/usr/sap/LC2/SYS/exe
2059:43	root	122980	/usr/sbin/syncd 60
837:39	root	57358	lrud
149:51	db2lc2	3579922	db2agent (LC2)
80:02	root	344200	jfsz
52:53	root	81940	gil
25:01	root	270428	kbiod
2:28	root	286892	/usr/vice/etc/afsd -
0:54	root	65552	xmgc
0:40	root	106638	/usr/sbin/snmpd
1:04	root	73746	netm
0:19	root	311416	/usr/vice/etc/afsd -
0:18	root	335966	/opt/dcelocal/bin/df
0:16	root	327870	TMR
0:16	root	295006	/usr/sbin/portmap
0:10	root	204834	/usr/lib/errdemon
0:06	root	180328	/usr/vice/etc/afsd -
0:04	root	360574	thrC
0:03	root	319586	rtcmd
0:03	root	131194	cmbg
0:03	root	368742	/usr/sbin/srcmstr
0:01	root	163938	CMP
0:01	root	172092	CMP
0:01	root	245846	CMP
0:01	root	213234	/usr/sap/trans/perfm
0:00	root	114728	j2pg
0:00	root	90134	wlmsched
0:00	root	278610	thrA
0:00	root	254064	/opt/dcelocal/bin/df

Host Top Processes - cgn15

Time	User	PID	Command
9999:59	root	16388	wait
9999:59	root	40970	wait
9999:59	root	24582	wait
9999:59	root	32776	wait
100:15	root	155724	/usr/sbin/syncd 60
62:09	root	196756	/usr/sbin/sddsrv
53:51	root	81940	gil
19:42	lc2adm	1867984	dw.sapLC2_D00 pf=/us
13:59	root	335962	kbiod
13:19	root	295042	nfsd
0:41	root	65552	xmgc
0:40	root	163972	/usr/sbin/snmpd
1:04	root	73746	netm
0:32	root	49164	reaper
0:26	root	270494	/usr/vice/etc/afsd -
0:25	root	278638	/opt/dcelocal/bin/cd
0:19	root	262210	/usr/sbin/portmap
0:14	root	221270	/usr/sbin/hostmibd -
0:13	root	303326	/usr/lib/sendmail -q
0:09	root	286808	TMR
0:04	root	319584	/opt/dcelocal/bin/df
0:00	root	57358	lrud
0:00	root	139300	lvmbb
0:00	root	147572	/usr/sbin/biod 6
0:00	root	106548	j2pg
0:00	root	90134	wlmsched
0:00	root	131210	/usr/sbin/nfsd 3891
0:00	root	122944	/usr/lib/errdemon
0:00	root	254056	/usr/sbin/rpc.lockd
0:00	root	245834	CMRP
0:00	root	237712	/usr/vice/etc/afsd -
0:00	root	344164	CMP
0:00	root	327792	/usr/vice/etc/afsd -

Host CPU Utilization Summary

Host	Aggregate Average Utl (%)	Peak 8Hr Avg Utl (%)	Peak 1Hr Avg Utl (%)	Peak Minute Utl (%)
cgn13	29	49	90	99
cgn15	3	19	90	99

Host Memory Utilization Summary

Host	Aggregate Average Utl (%)	Peak 8Hr Avg Utl (%)	Peak 1Hr Avg Utl (%)	Peak Minute Utl (%)
cgn13	94	99	99	100
cgn15	46	49	60	62

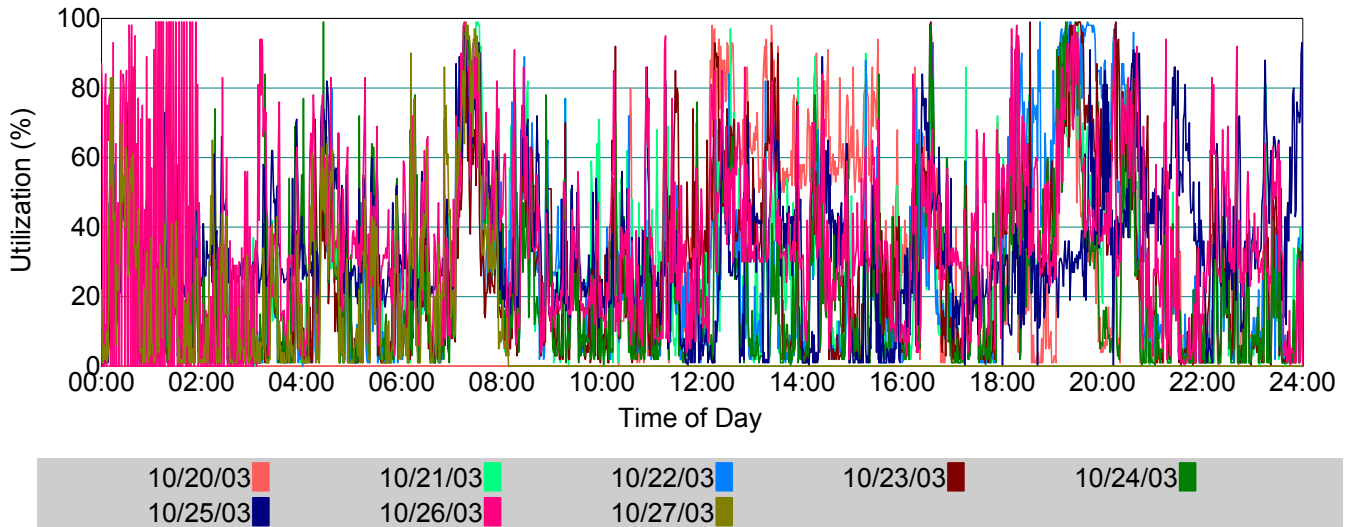
** Memory utilization indicates 100% on iSeries due to Single Level Storage architecture..

Host Disk Utilization Summary

Host	Aggregate Average Utl (%)	Peak 8Hr Avg Utl (%)	Peak 1Hr Avg Utl (%)	Peak Minute Utl (%)
cgn13	0	0	0	4
cgn15	1	1	3	86

Host CPU Statistics - cgn13

CPU Utilization - 4 processor(s)

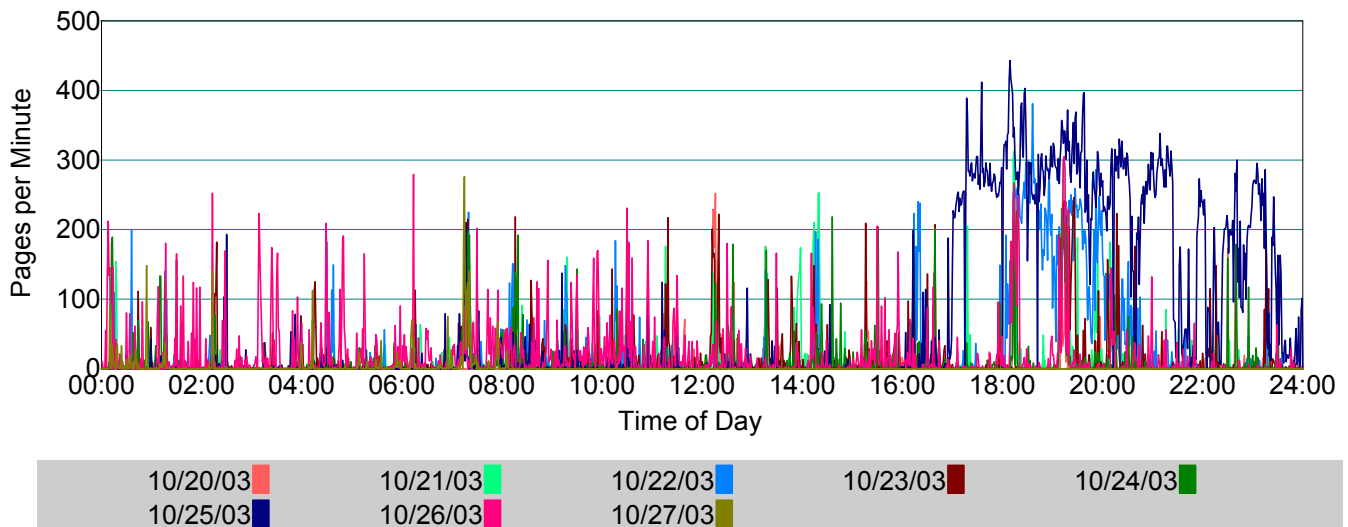


This chart plots average processor utilization* in one minute intervals over time.

Peak 1-Hour Average Utilization of 90% occurred on 10/22/2003 at 19:30.

Peak 8-Hour Average Utilization of 49% occurred on 10/25/2003 at 23:37.

Paging Level

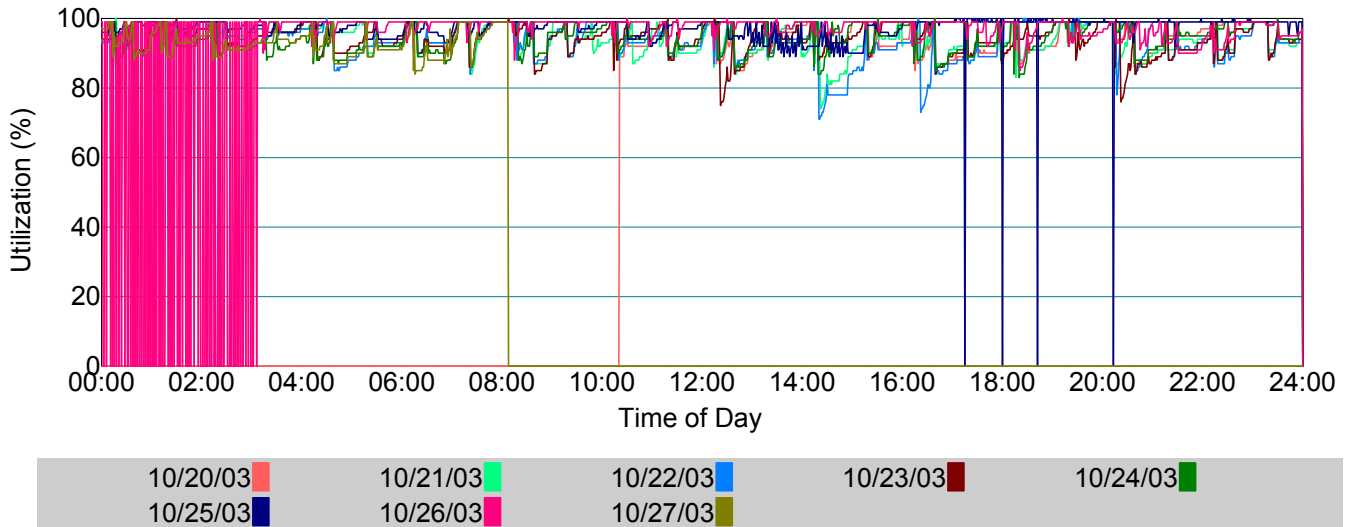


This chart plots combined paging activity* (pages in + pages out) within one minute intervals over time.

* Statistics are provided by the R/3 operating system collector, SAPOSCOL.

Host Memory Statistics - cgn13

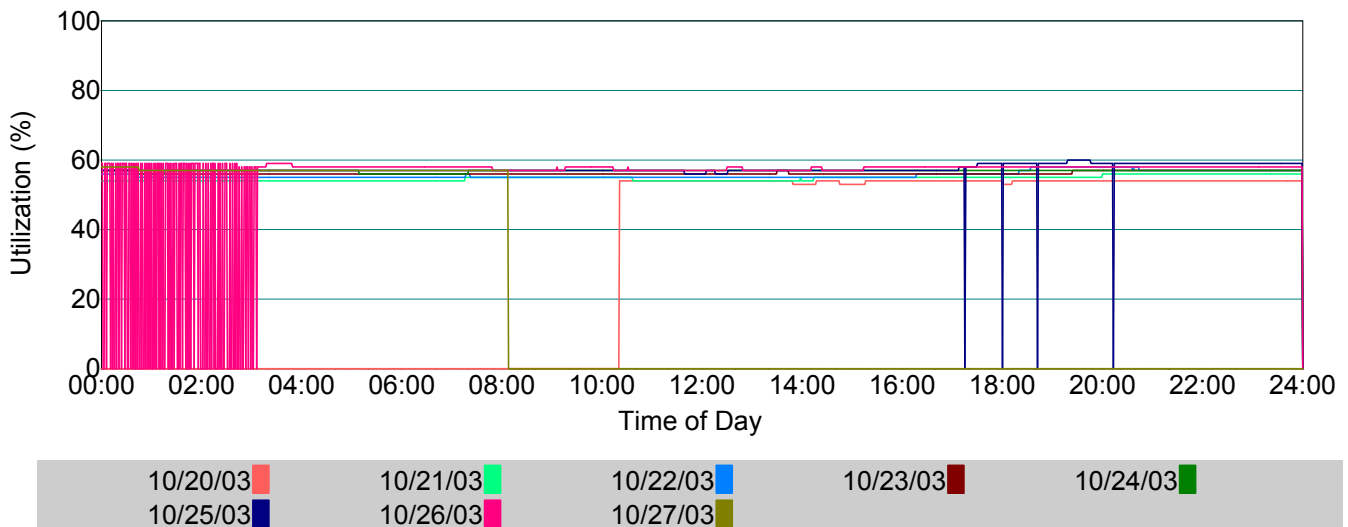
Memory Utilization - 8388 MB Total



This chart plots physical memory utilization* in one minute intervals over time.

** Memory utilization indicates 100% on iSeries due to Single Level Storage architecture..

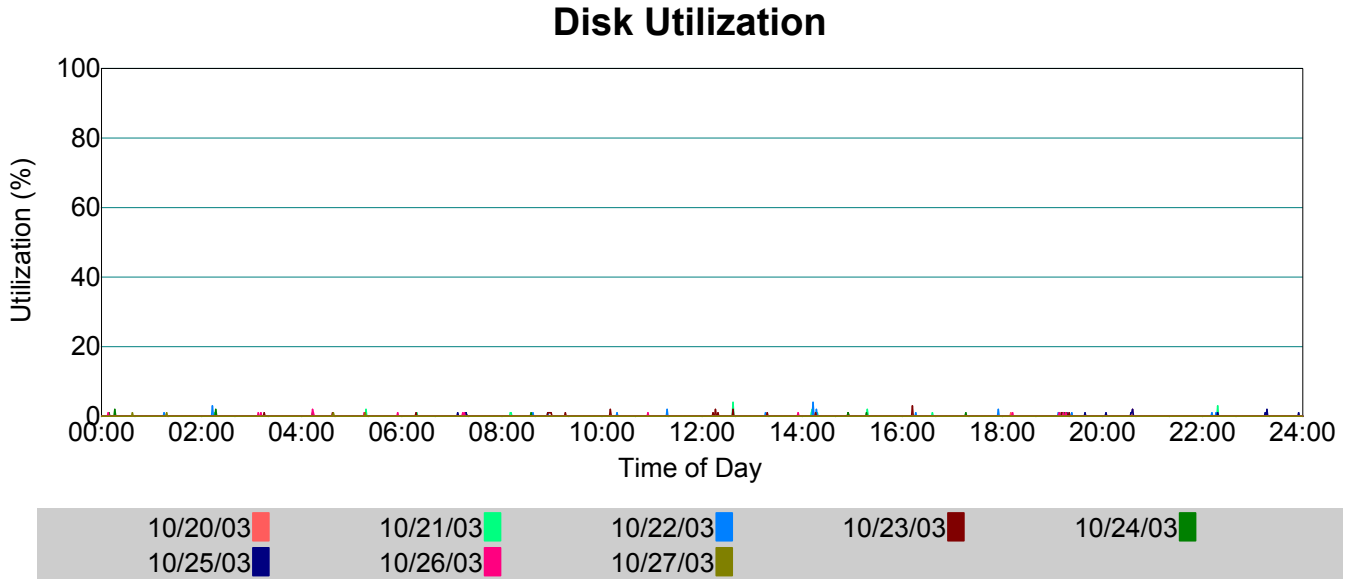
Swap Utilization - 9371 MB Total



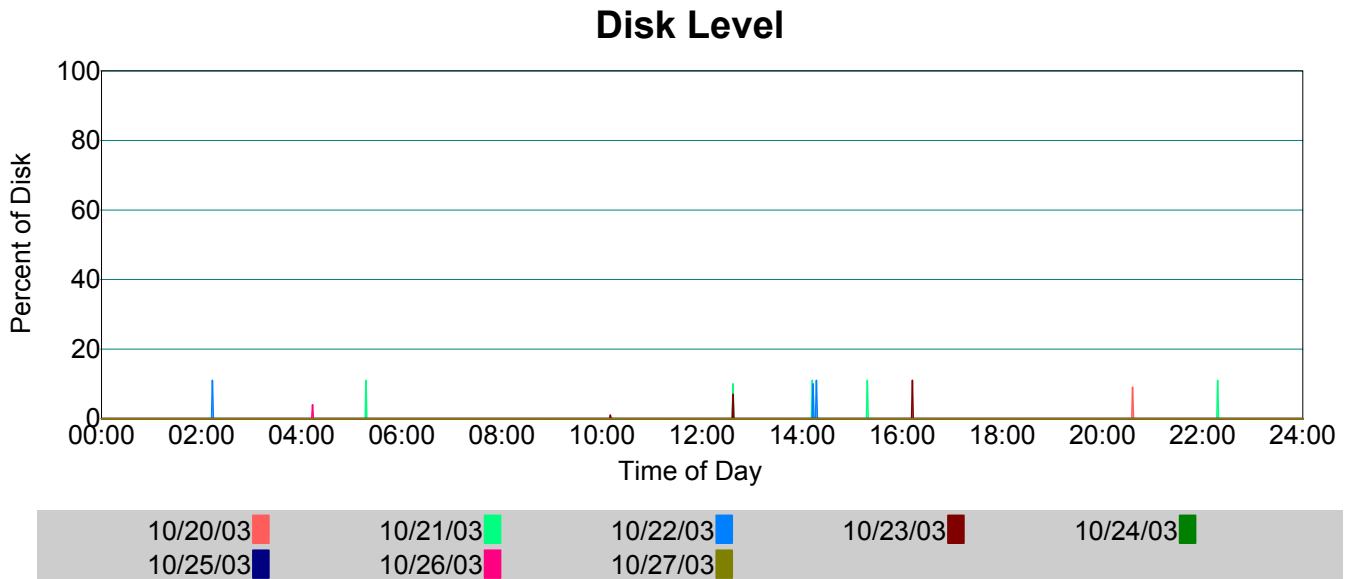
This chart plots swap utilization* in one minute intervals over time.

* Statistics are provided by the R/3 operating system collector, SAPOSCOL.

Host Disk Statistics - cgn13



This chart plots average disk I/O utilization* in one minute intervals over time.

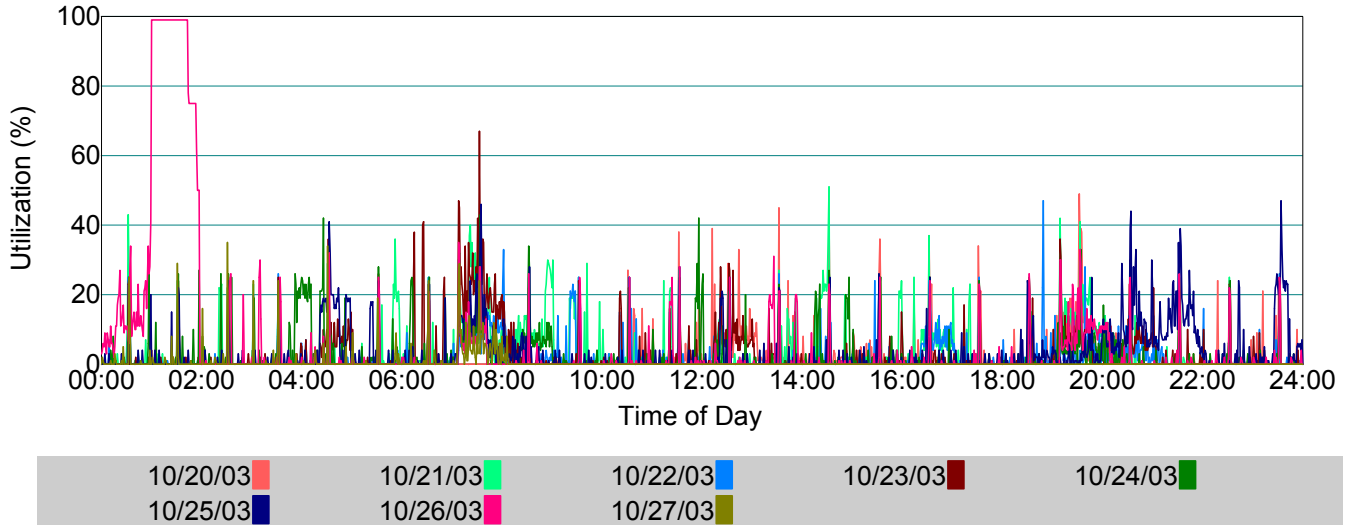


This chart plots the percentage of disk with average I/O utilization* above 20% in one minute intervals over time.

* Statistics are provided by the R/3 operating system collector, SAPOSCOL.

Host CPU Statistics - cgn15

CPU Utilization - 4 processor(s)

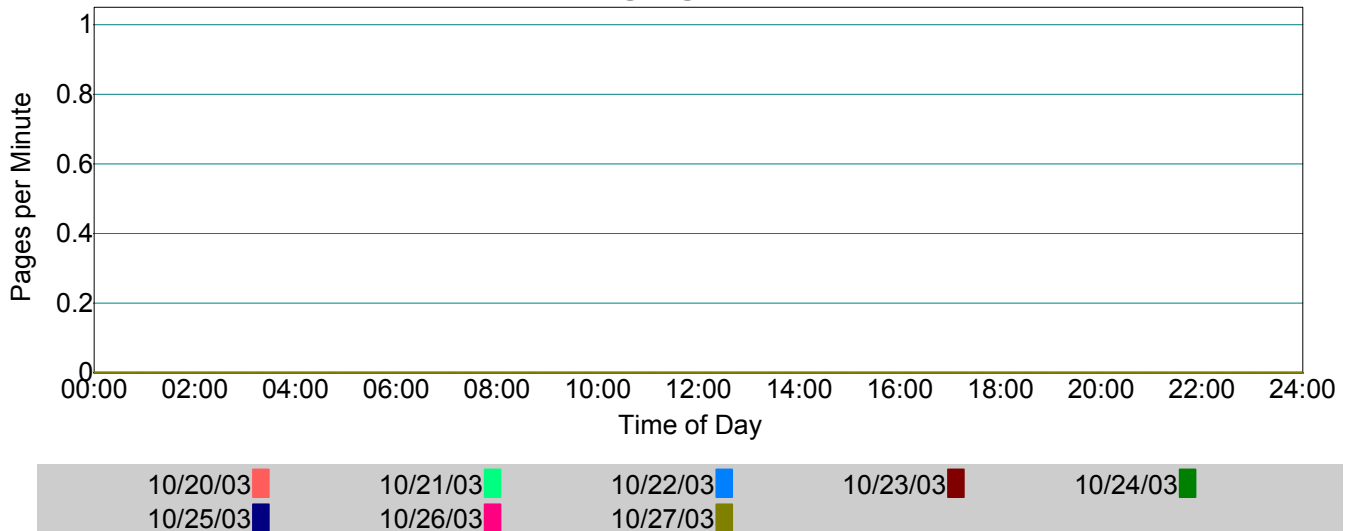


This chart plots average processor utilization* in one minute intervals over time.

Peak 1-Hour Average Utilization of 90% occurred on 10/26/2003 at 01:27.

Peak 8-Hour Average Utilization of 19% occurred on 10/25/2003 at 22:54.

Paging Level

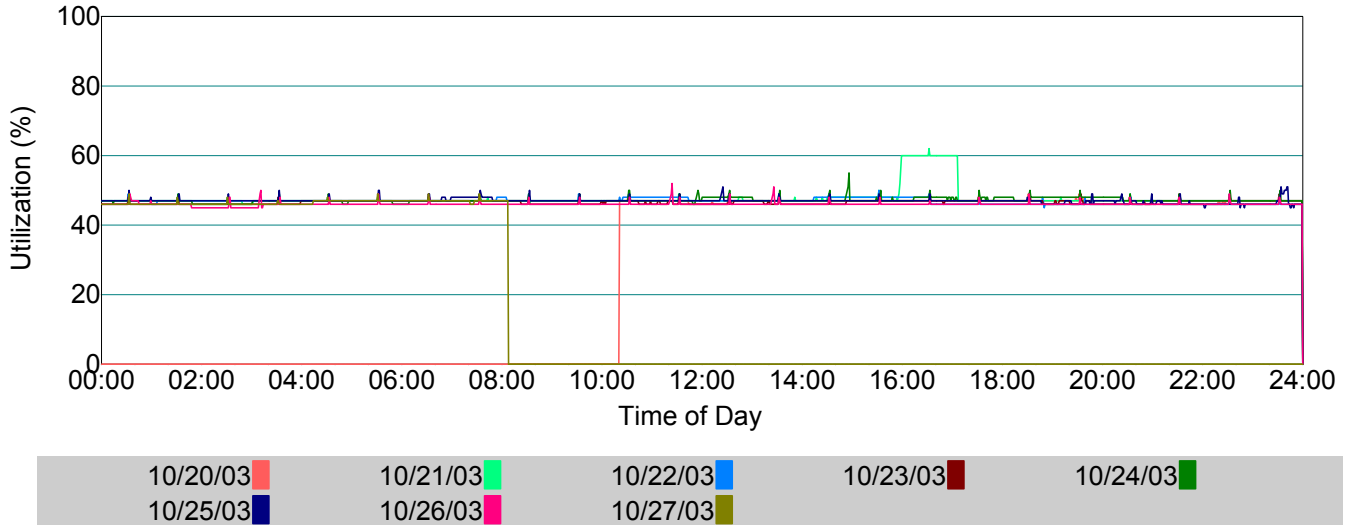


This chart plots combined paging activity* (pages in + pages out) within one minute intervals over time.

* Statistics are provided by the R/3 operating system collector, SAPOSCOL.

Host Memory Statistics - cgn15

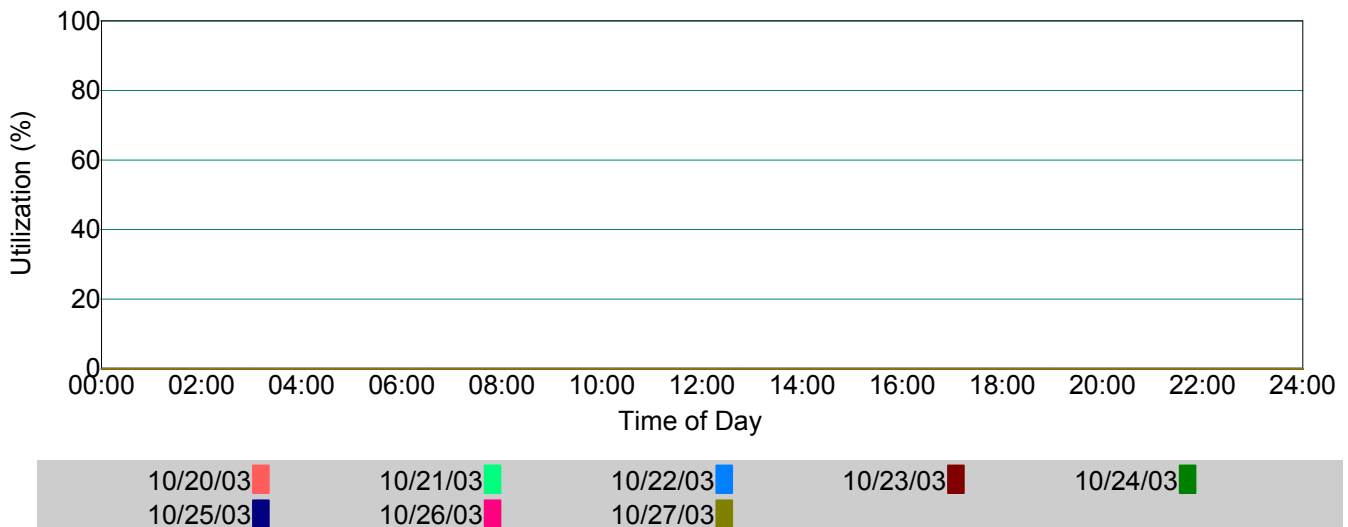
Memory Utilization - 8388 MB Total



This chart plots physical memory utilization* in one minute intervals over time.

** Memory utilization indicates 100% on iSeries due to Single Level Storage architecture..

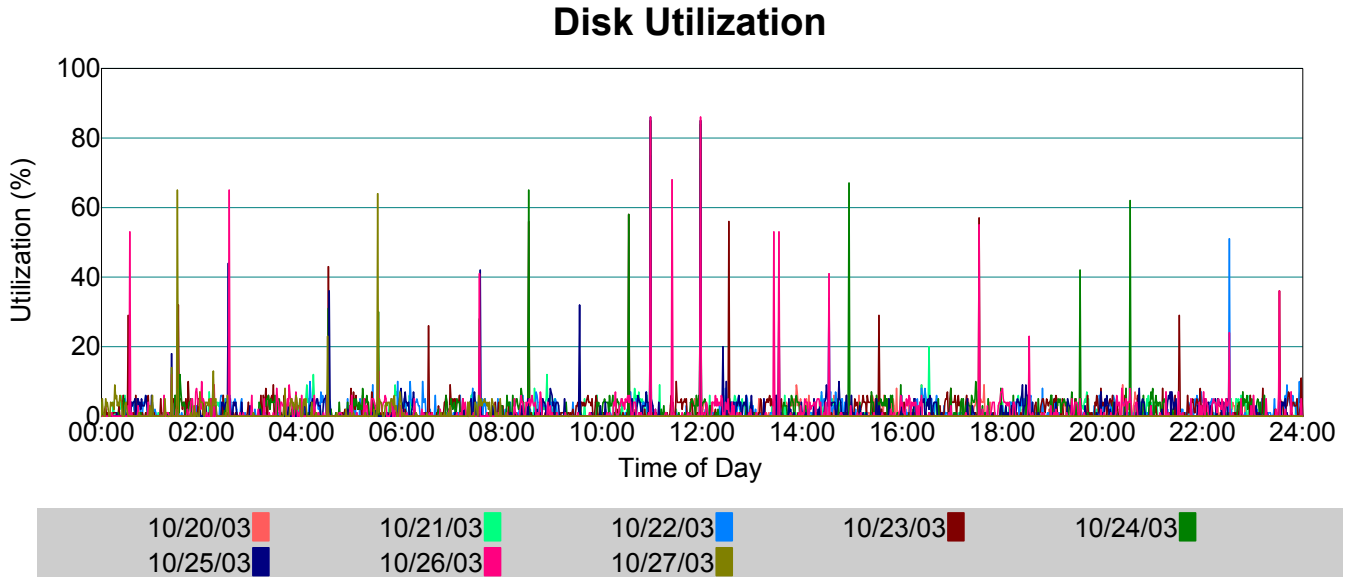
Swap Utilization - 9371 MB Total



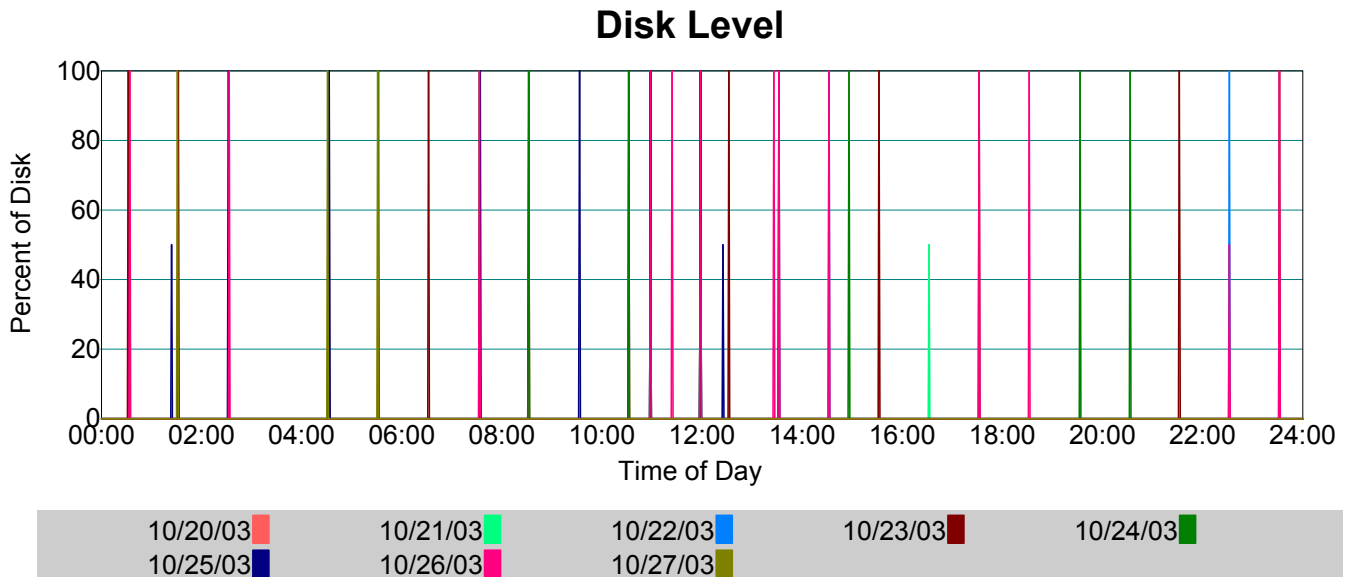
This chart plots swap utilization* in one minute intervals over time.

* Statistics are provided by the R/3 operating system collector, SAPOSCOL.

Host Disk Statistics - cgn15



This chart plots average disk I/O utilization* in one minute intervals over time.



This chart plots the percentage of disk with average I/O utilization* above 20% in one minute intervals over time.

* Statistics are provided by the R/3 operating system collector, SAPOSCOL.

Top Disk

Host	Disk	High Count	Moderate Count	Peak Util (%)	Average Util (%)
cgn13	hdisk0	1138	961	100	15
cgn13	hdisk1	897	836	100	11
cgn15	hdisk0	37	20	95	2
cgn15	hdisk1	36	17	83	1
cgn13	hdisk118	2	12	41	0
cgn13	hdisk149	2	11	40	0
cgn13	hdisk28	2	11	41	0
cgn13	hdisk5	2	11	42	0
cgn13	hdisk568	2	10	42	0
cgn13	hdisk573	2	10	42	0
cgn13	hdisk95	2	10	43	0
cgn13	hdisk483	2	10	40	0
cgn13	hdisk663	2	10	42	0
cgn13	hdisk33	2	10	40	0
cgn13	hdisk617	2	10	41	0
cgn13	hdisk185	2	10	42	0
cgn13	hdisk684	2	10	43	0
cgn13	hdisk460	2	10	42	0
cgn13	hdisk446	2	9	41	0
cgn13	hdisk689	2	9	42	0
cgn13	hdisk275	2	9	41	0
cgn13	hdisk640	2	9	42	0
cgn13	hdisk716	2	9	42	0
cgn13	hdisk293	2	9	42	0
cgn13	hdisk356	2	9	40	0
cgn13	hdisk518	2	9	42	0
cgn13	hdisk626	2	9	40	0
cgn13	hdisk203	2	9	42	0
cgn13	hdisk437	2	9	42	0
cgn13	hdisk550	2	9	42	0

End Of Report