

NetWare Migration and Server Consolidation Utility

a technical overview

Doug Clower
Global Solutions Architect - Linux Solutions
Solutions Creation & Marketing
Novell, Inc.
dclower@novell.com



Novell.

N

Agenda

what we are going to cover



When to use what

Consideration & Tips

The Future

Questions

N

Disclaimer

your mileage may vary

So, fasten your seatbelt.

Disclaimers

- Mention of any particular tools or approaches, whether third-party or Novell, does not imply they are the best for your particular situation (and in the case of third-party tools, does not imply an endorsement by Novell).

Hopefully, with the information in this session, you will be able to fully use what tools and information are available.

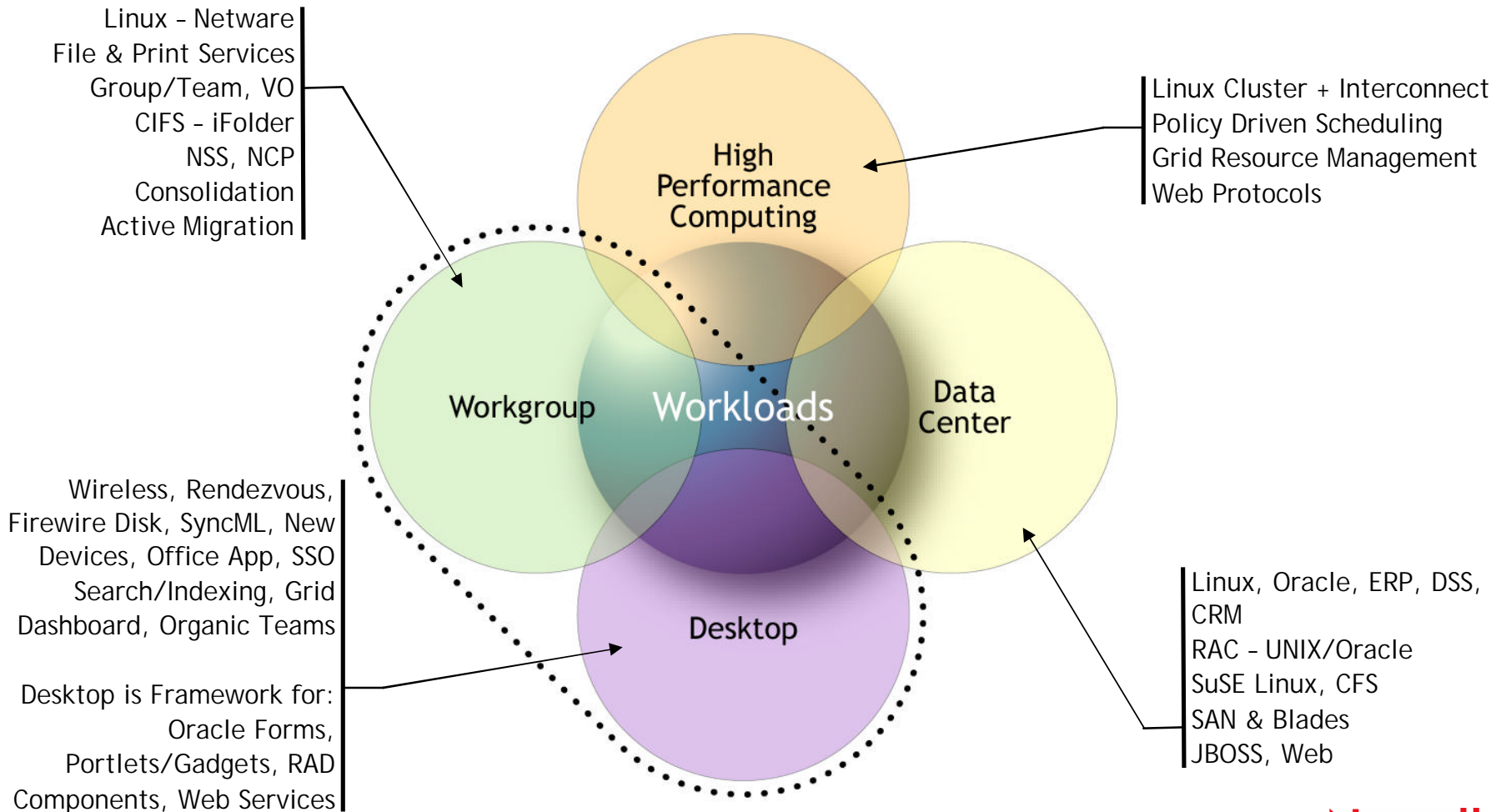


When Do I Use What?

N

Workloads

introduction to our focus area





Decisions, decisions?

what to use



Which to use?

- “In-place upgrade”
(now has new, multiple names)
- Migration Wizard
- Server Consolidation

N

Upgrade/Migration what tools are available?

Local Upgrade (In-Place Upgrade)

The Local Upgrade updates the NOS on a single machine, the same piece of hardware gets a new OS.

Migration Wizard

The Migration Wizard takes the identity, DS and all data and moves it to a new piece of hardware. It is an across the wire hardware "swap" utility.

Server Consolidation Utility

The Server Consolidation Utility moved user data, along with all associated meta-data. It can now move files across trees. Copies are non-destructive (source data remains in tact).

Remote Upgrade

The Remote upgrade will allow administrators to upgrade any server in their environment, regardless of location from a centralize location.

Deployment Manager

The Deployment Manager is a tool that prepares your network for the introduction of a new server.

Down Server Upgrade

The ability to restore a non-responding server from a down state by using the Install CD and restoring basic operating system files...also allows you to upgrade at that time.



Upgrade/Migration matrix

Source	NW 4.2	NW 5.1	NW 6.0	NW 6.5
NW 3.2	Local Upgrade	Local Upgrade MigWiz 6.0	MigWiz 6.0	MigWiz 6.5
NT 4.0 Domains	N/A	MigWiz 6.0 SCU 2.0	MigWiz 6.0 SCU 2.0	SCU 2.5
NW 4.10	Local Upgrade	SCU 2.0	SCU 2.0	SCU 2.5
NW 4.11	Local Upgrade	Local Upgrade SCU 2.0	SCU 2.0	SCU 2.5
NW 4.2	N/A	Local Upgrade MigWiz 6.0 SCU 2.0	Local Upgrade MigWiz 6.0 SCU 2.0	MigWiz 6.5 SCU 2.5 Down Server Upgrade
NW 5.0	N/A	Local Upgrade MigWiz 6.0 SCU 2.0	Local Upgrade MigWiz 6.0 SCU 2.0	In-Place Upg MigWiz 6.5 SCU 2.5 Down Server upgrade
NW 5.1	N/A	MigWiz 6.0 SCU 2.0	In-Place Upg MigWiz 6.0 SCU 2.0	Remote Upg MigWiz 6.5 SCU 2.5 Down Server upgrade
NW 6.0	N/A	N/A	MigWiz 6.0 SCU 2.0	MigWiz 7.1 Remote Upg SCU 2.5 Down Server upgrade

Considerations and Tips

N

Migrations

what should I think about?

Considerations

- DS (purge_nw.nlm?)
- Volumes
- Prior NOS version
- Legacy/NSS conversions

Straight upgrades

- In place
- Across the wire

Consolidations

Cluster upgrades

Remote sites

N

Upgrade/Migration common pitfalls

IP Infrastructure not in place

Failure to allow DS to synchronize

Not cleaning up eDirectory problems first

Not enough free space on SYS volume

Running RCONSOLE from the server you are upgrading

Having applications that hold eDirectory open

Failure to communicate plan to team members

Have a human onsite at remote locations

uh...do you have a backup?

N

Upgrade/Migration do this first!

If you are going to do any of these items, do them **before** you upgrade the server:



Change server names

Change server context in eDirectory

Change server IP addresses

N

Upgrade/Migration clusters

Web based deployment manager

- Launch cluster install and upgrade tools
 - Requires Novell client on desktop

Upgrade from NW5.1 to NW6.5

- Same procedure as NW5.1 to NW6

Upgrade from NW6 to NW6.5

- Rolling server upgrade is supported
 - Upgrade each server in turn
- Cluster operational during upgrade

N

Upgrade/Migration servers

Downed server upgrade

Careful....

Follow the TID # 10090315

If you don't follow the instructions

- You will install it as new
- Not a good thing.

N

Upgrade/Migration cool tools to use

Toolbox (support.novell.com)

NoRM (included with NetWare 6.5)

vnc (www.realvnc.org)

JCMD.NLM (www.jrbsoftware.com)

MOUNTDOS.NLM (www.midnighttech.com)

CPQFM (www.novellshareware.com)

UltraEdit (www.ultraedit.com)



N

Administration day to day activities



Web Management tips

- Firewall considerations
- Console operator considerations

ConsoleOne tips

iManager Tips

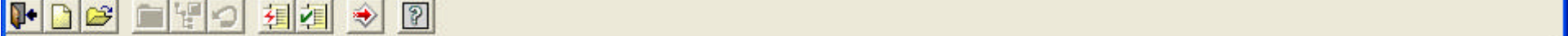


Server Consolidation Utility

features

Server Consolidation Features

- Many to one
- One to many
- Same eDir tree
- Different eDir trees
- Copies all data
 - Trustees/ownerships/namespace information



Source Domain

Destination Tree

- SCMU-DOMAIN
 - Builtin
 - Computers
 - ForeignSecurityPrincipals
 - System
 - Users
 - Bruces Users
 - Domain Controllers
 - 2K-SRVR
 - FolderToShare
 - HomeDirs
 - NETLOGON
 - Profiles
 - SYSVOL
 - Michael's Users
 - GlobalGroup1
 - Group1
 - LocalGroup1
 - LocalGroup2
 - test
 - Michael O. Main
 - Org1 Level 1
 - Group1
 - Org 1 Level 2

- MIGDEV-651-TREE
 - novell
 - GlobalGroup1
 - LocalGroup1
 - LocalGroup2
 - Michael O. Main
 - Group1
 - admin
 - Bruce Door
 - Bruce Laptop
 - Bruce R. Cutler
 - Bruce Window
 - Don Smith
 - Joe Conlin
 - Michael Otis
 - someuserfromtemplate
 - BRC Test OU
 - Brctest2
 - Bruce Door OU
 - Demo Users Container
 - Kirks OU
 - MOtis
 - New OU
 - MIGDEV-651_SYS
 - MIGDEV-651_SYS1

N

Server Consolidation Utility

copy file data

File system

- All stream data
- All meta-data
 - Trustees
 - Ownerships
 - User space restrictions
 - Name space information (Macintosh)



N

Server Consolidation Utility

copy directory data

Match-up objects

Must be trustees

Can create

- Users
- Groups

Trick

- One dummy group for users or groups not assigned as trustees



N

Server Consolidation Utility bells & whistles

File synchronization

- Delete on destination if deleted on source

File comparison

- Compare meta-data
 - Trustees/ownerships/date/time/size
- Compare all file information
 - Byte-by-byte comparison
 - First difference stops compare



N

Server Consolidation Utility more bells & whistles

Date ranges

- Last accessed/modified/created dates

Wildcard list

- Exclusion list
 - *.mp3
 - *.bak
 - Specific.file



N

Server Consolidation Utility

command line options

Scheduled tasks

- Program/Accessories/System Tools/Scheduled Tasks
- Add scheduled task
- Follow wizard
 - Enter project name
 - The letter Y, to automatically run the selected Server Consolidation project.
 - The password for the admin on the source server.
 - The password for the admin on the destination server

See:

<http://www.novell.com/documentation/lg/servercon26/index.html>

N

Server Consolidation Utility other features

Microsoft Active Directory to NetWare

Similar to NT to NetWare

- Users
- Groups
- File system including permissions
- Containers (users and groups only)





Novell Tools

for your reference/use

Web Resources - to get the latest versions:

<http://download.novell.com>

- Select "NetWare Migration Wizard" (or)
- Select "Novell NetWare Server Consolidation"
- Docs for both of these are at <http://support.novell.com/documentation>

Cool Solutions tools by tool name:

<http://www.novell.com/coololutions/tools/>



Novell Support

for your reference

More resources:

Novell Support Forums:

<http://support.novell.com/forums>

Latest Downloads:

<http://download.novell.com>



Novell TIDs

for your reference/review

TIDs (enter number in support.novell.com search field)

- DS Maint procedure - see TID 10010933
- DS Health Check - see TID 10060600
- NW6 licensing explained - TID 10065536
- Trustee NLM - see TID 2967610
- Toolbox NLM - see TID 2958910
- TBACKUP.EXE - see TID 2937757

N

Third Party Tools for your reference



Portlock Storage Manager

<http://www.portlock.com>

PowerQuest ServerMagic 6 for NetWare

<http://www.powerquest.com>

VMWare workstation 4.0

<http://www.vmware.com>

JRB Utilities

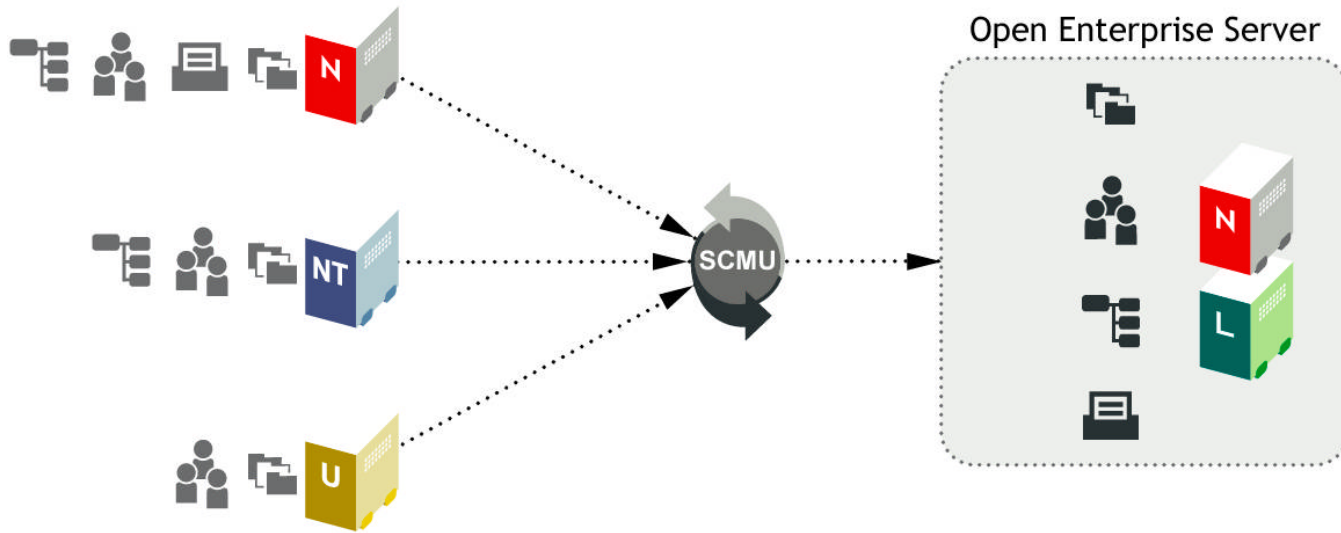
<http://www.jrbsoftware.com>

Futures



Server Consolidation Utility

what it does



N

Server Tools

futures

NetWare Install/Upgrades

- NIS - Continued support
- RPMs - future support

NetWare Migration Wizard

- NetWare to NetWare - Continued support
- Hardware/OS upgrades

Services Consolidation / Migration Utility (SCMU)

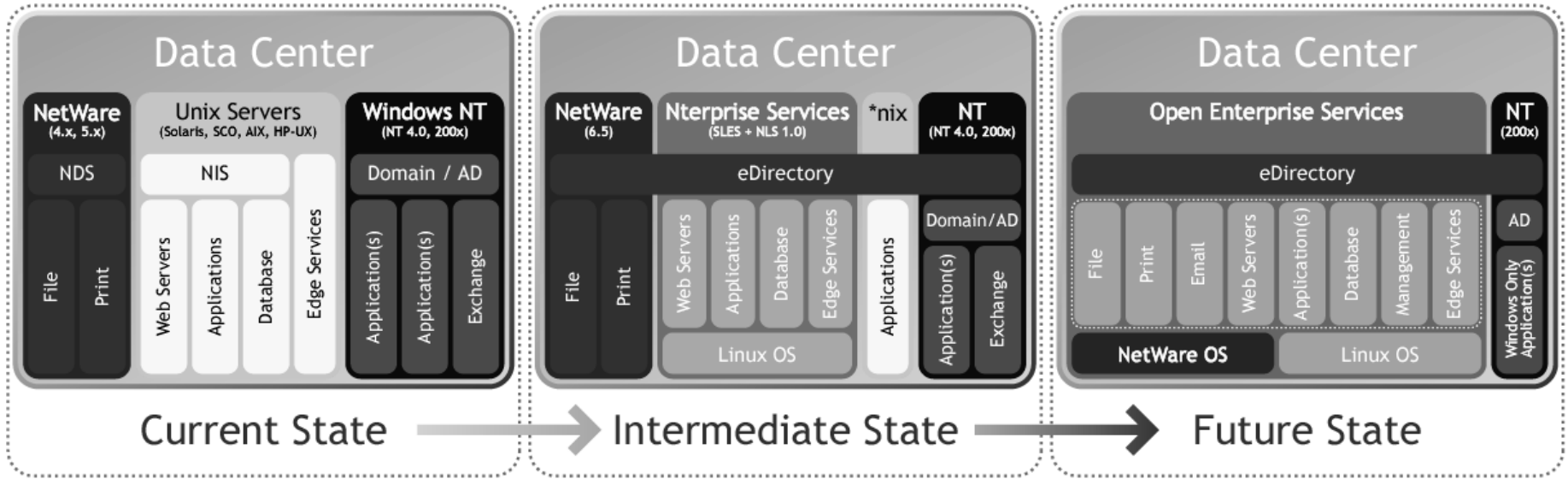
- Multiple sources/destinations
 - AD to OES
 - *nix to OES
 - NetWare to OES
- Non-destructive
- Co-existence



N

Migration Strategy

one approach - transitional



Novell®

Questions?

Unpublished Work of Novell, Inc. All Rights Reserved.

This work is an unpublished work and contains confidential, proprietary, and trade secret information of Novell, Inc. Access to this work is restricted to Novell employees who have a need to know to perform tasks within the scope of their assignments. No part of this work may be practiced, performed, copied, distributed, revised, modified, translated, abridged, condensed, expanded, collected, or adapted without the prior written consent of Novell, Inc. Any use or exploitation of this work without authorization could subject the perpetrator to criminal and civil liability.

General Disclaimer

This document is not to be construed as a promise by any participating company to develop, deliver, or market a product. Novell, Inc., makes no representations or warranties with respect to the contents of this document, and specifically disclaims any express or implied warranties of merchantability or fitness for any particular purpose. Further, Novell, Inc., reserves the right to revise this document and to make changes to its content, at any time, without obligation to notify any person or entity of such revisions or changes. All Novell marks referenced in this presentation are trademarks or registered trademarks of Novell, Inc. in the United States and other countries. All third-party trademarks are the property of their respective owners.



Novell®