



Systems and Technology Group

Mainframe-Inspired Technologies Delivering Lower Customer Costs

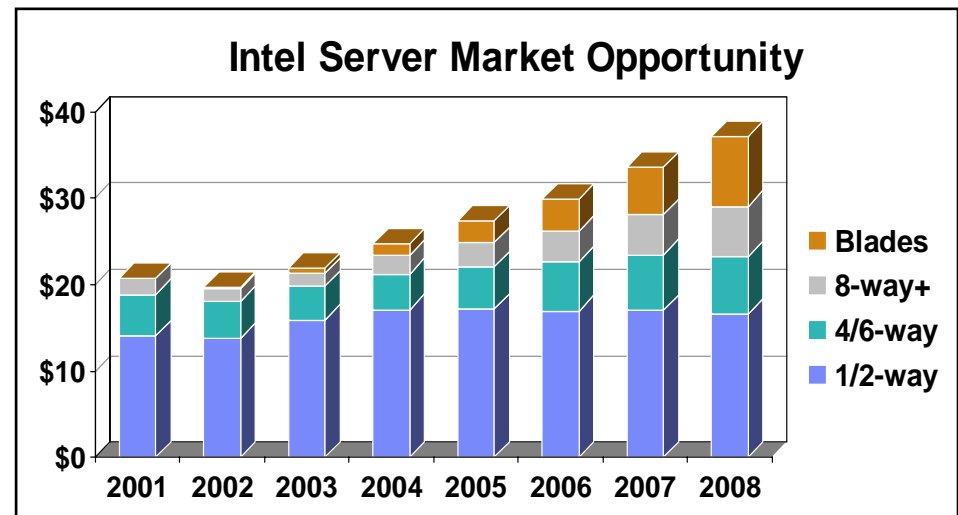
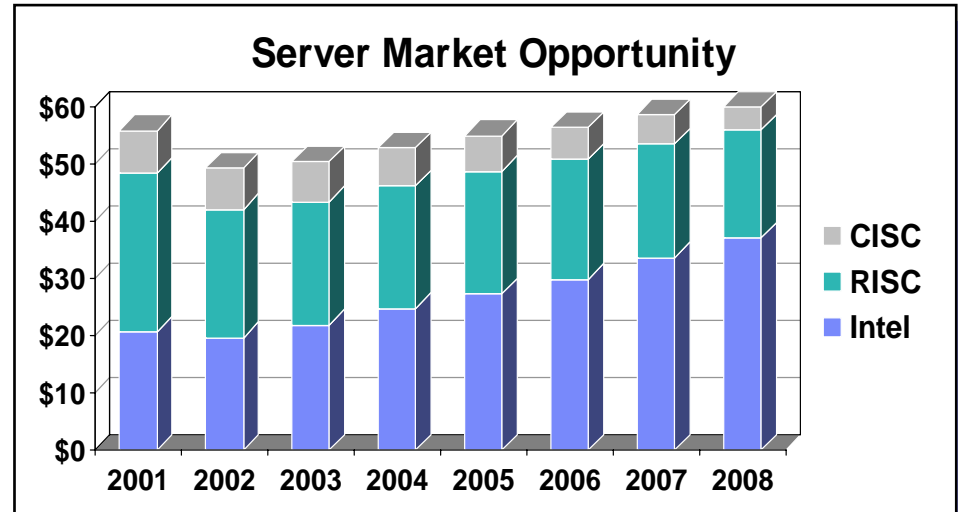
Susan Whitney
General Manager
IBM eServer xSeries





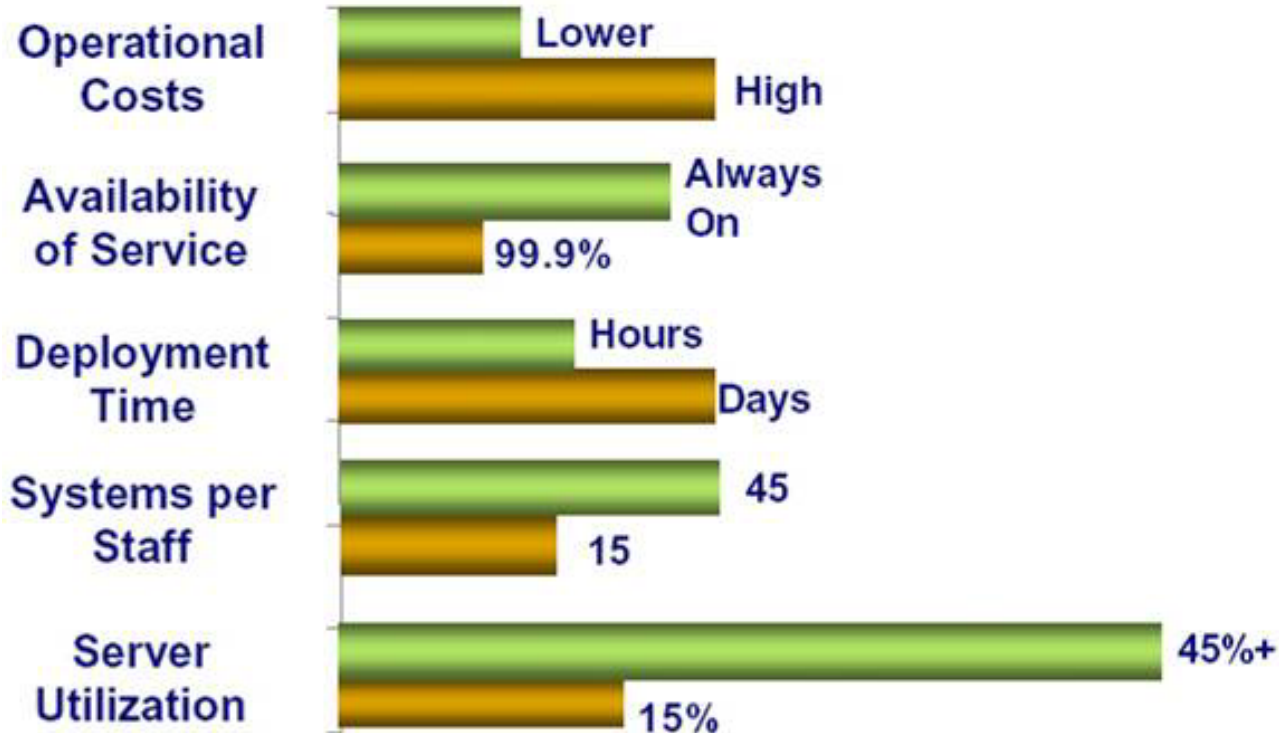
Intel Servers Fastest Growing Opportunity

- **Will represent 46% of server market by 2005**
- **Growth drivers**
 - ▶ UNIX low-end substitution
 - ▶ HPC clusters
 - ▶ Linux
 - ▶ Server consolidation
 - ▶ Enterprise applications
 - ▶ SMB >50% of Intel-based market
 - ▶ ISVs
- **High growth segments**
 - ▶ Blades: 55% revenue CAGR 2004-8
 - ▶ 8-way+: 29% revenue CAGR 2004-8
- **Capturing channel capacity**
 - ▶ Distributors and VARs balancing portfolio
 - ▶ CTO competitive capability





Message From CIOs



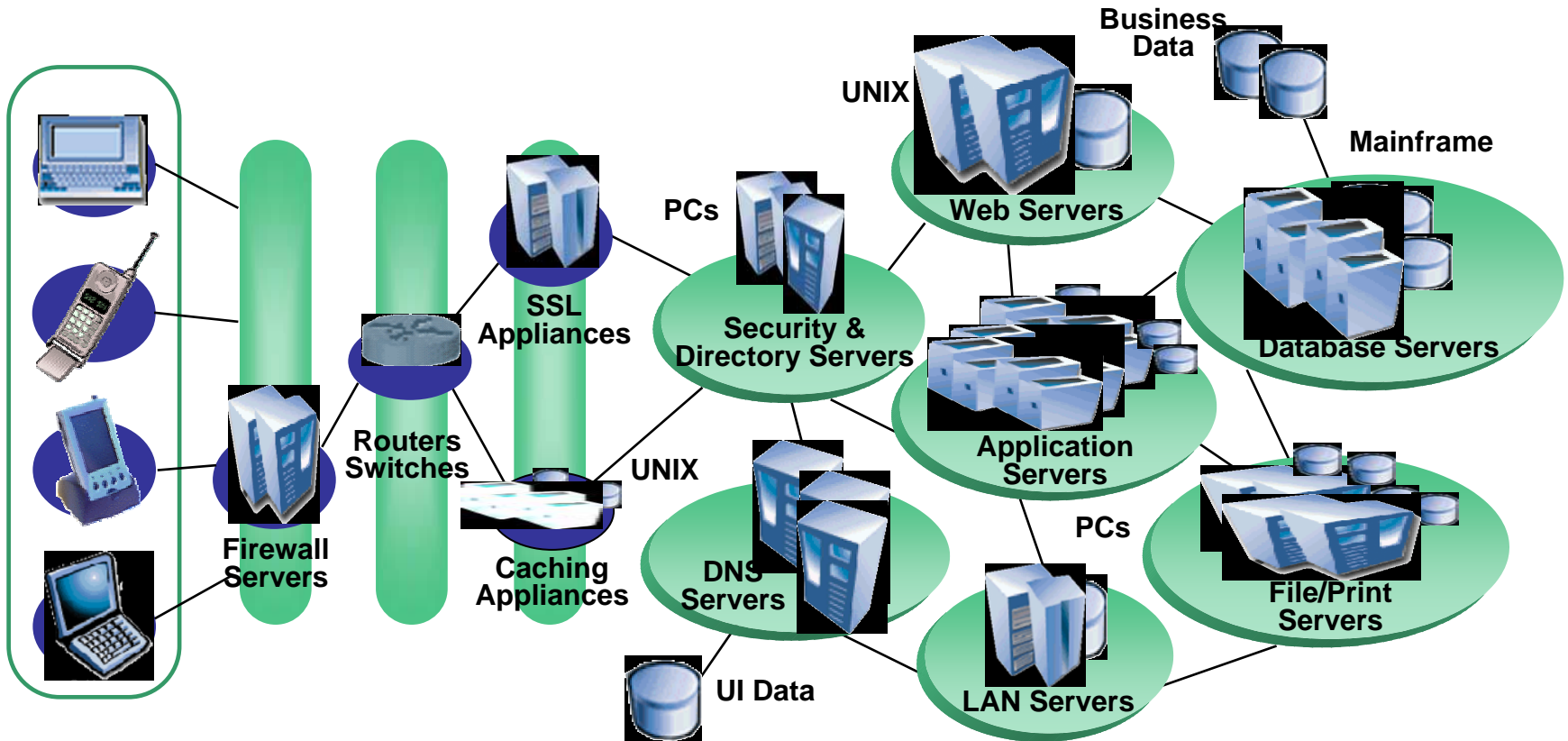
2002

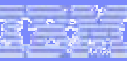
2006

Source: IDC 2003

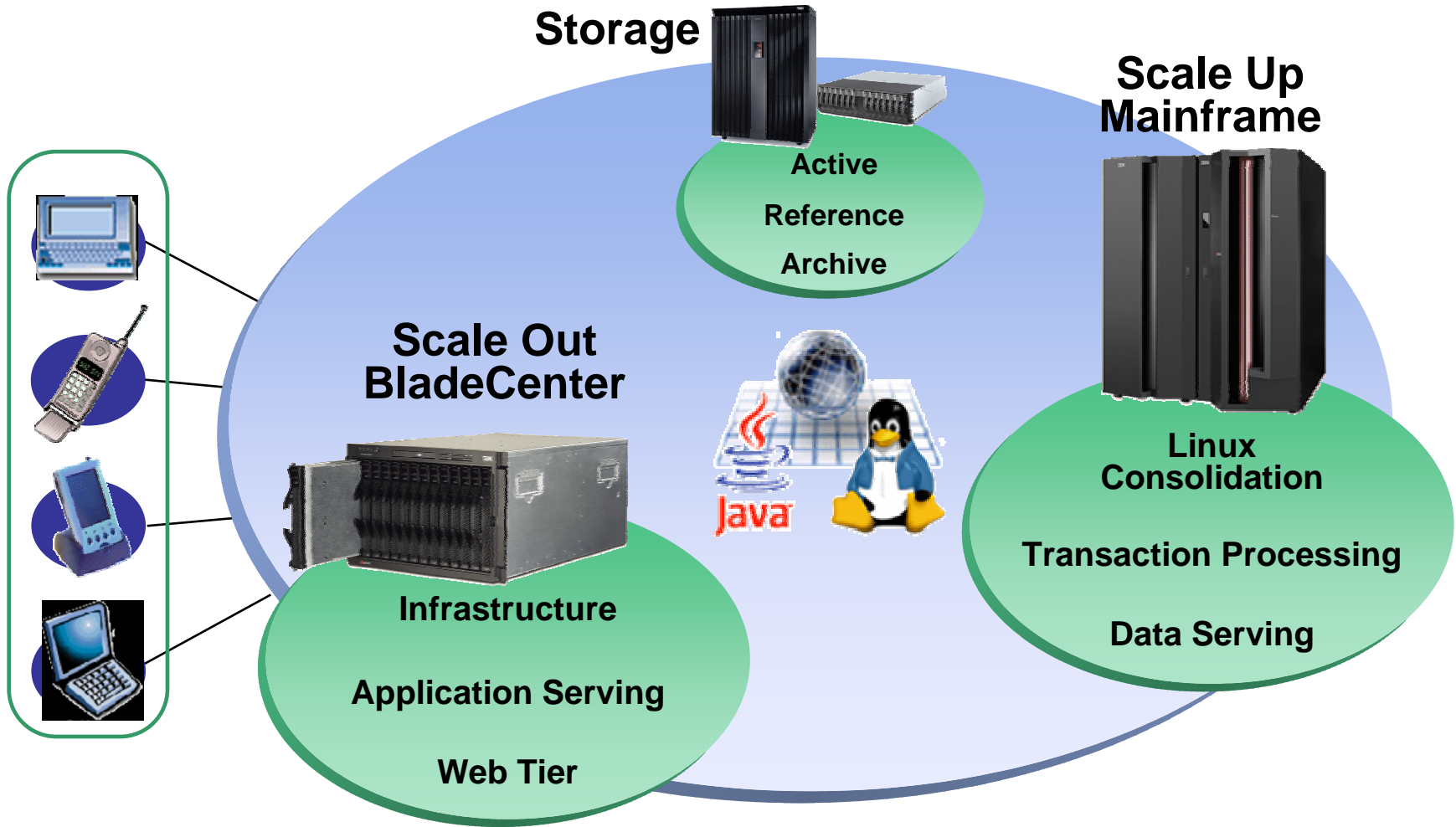


Today's Infrastructure





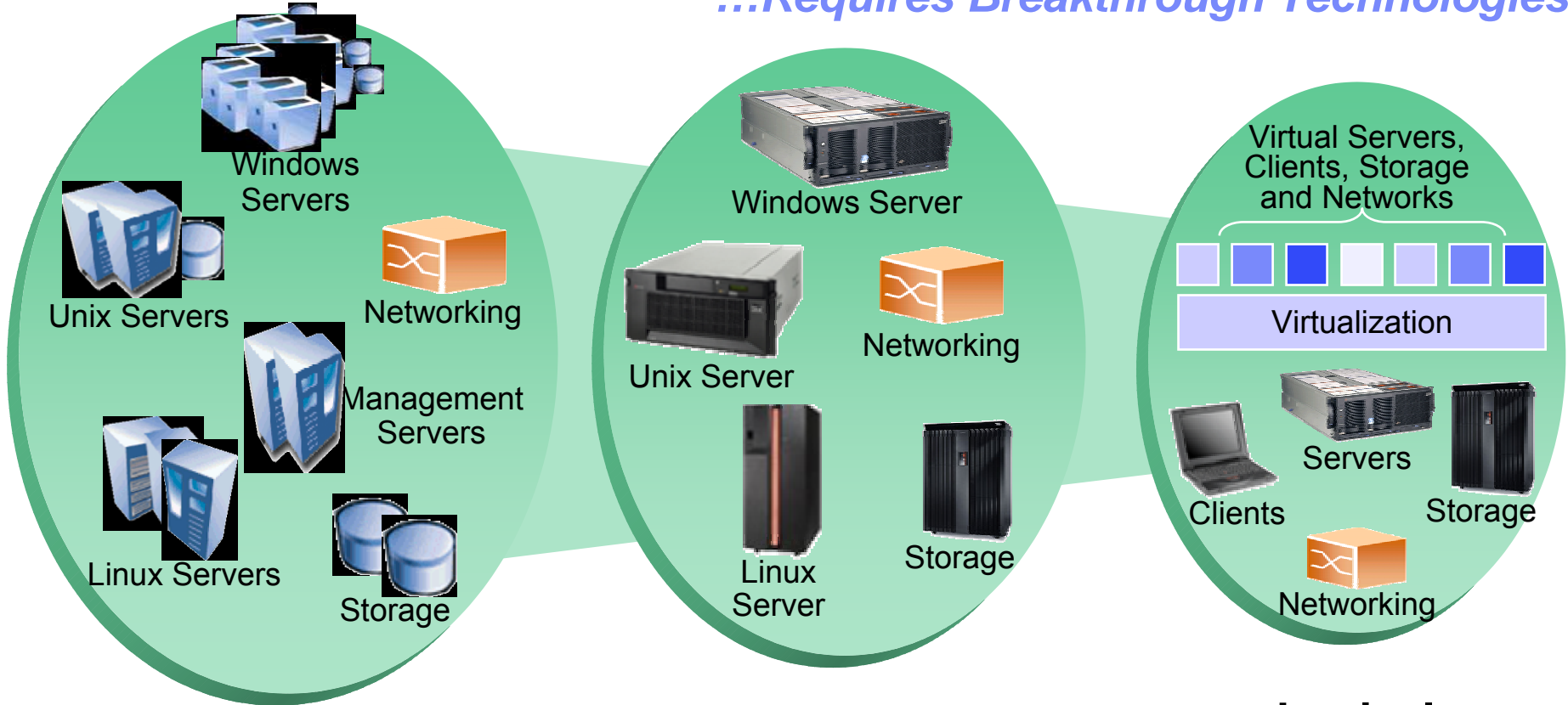
Infrastructure Simplification





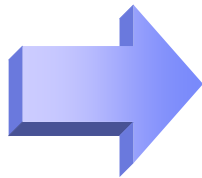
Simplification...

...Requires Breakthrough Technologies



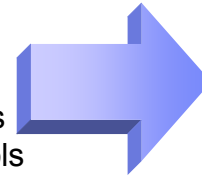
Complex

- 1 workload per server
- Disparate mgmt tools
- Manual provisioning



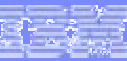
Physical Consolidation

- Fewer servers and licenses
- Disparate management tools
- Labor intense provisioning

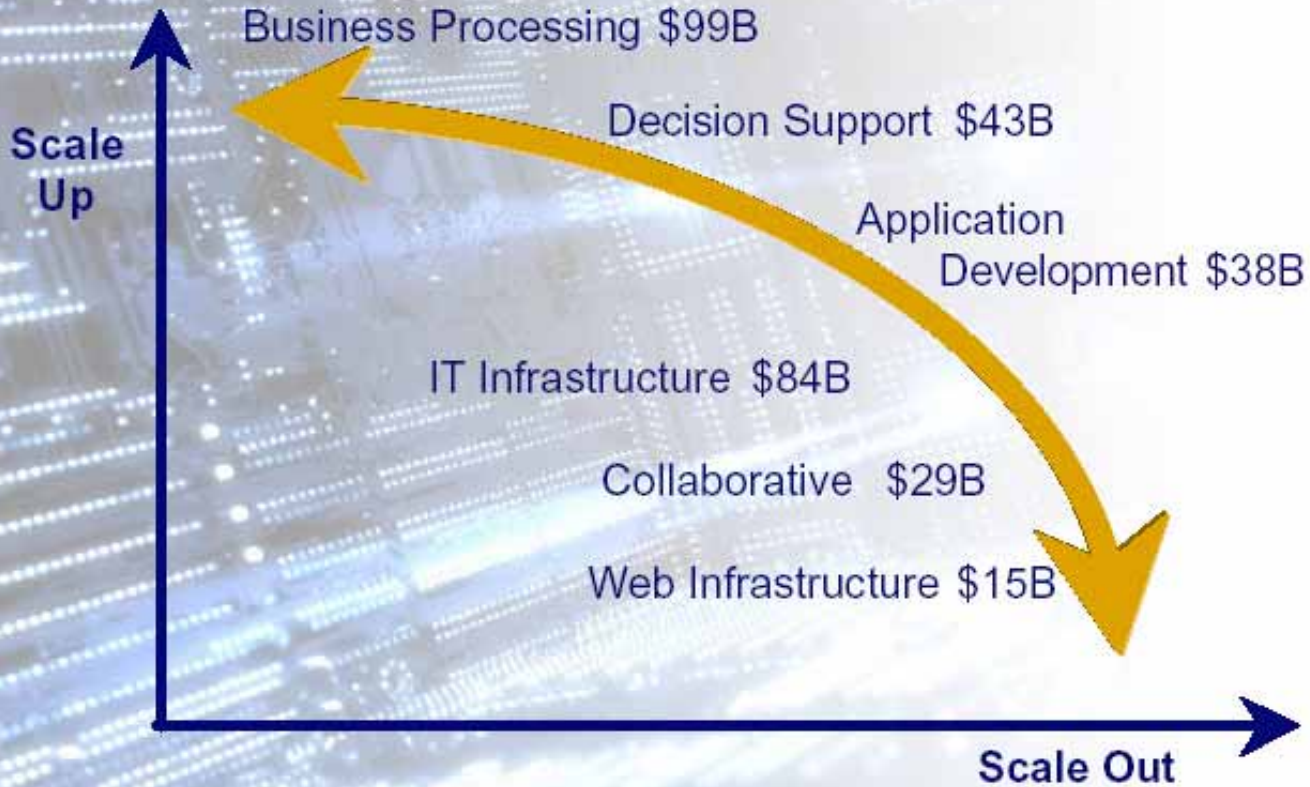


Logical Simplification

- Systems managed as one
- Multiple OSs per server
- Rapid provisioning
- Automatic workload mgmt



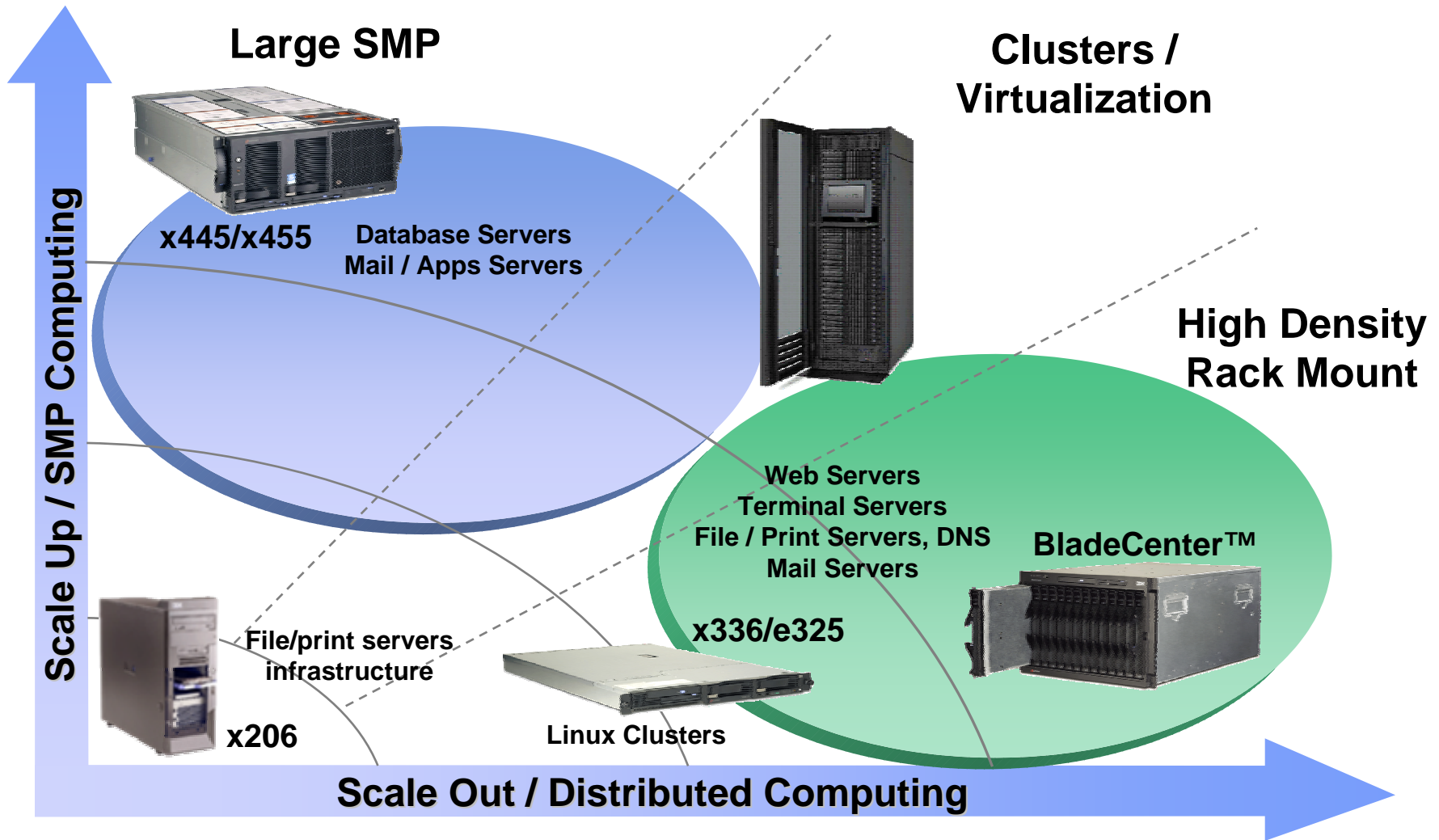
The Customer Investment Base Looking At Workloads



Source: IDC 2003

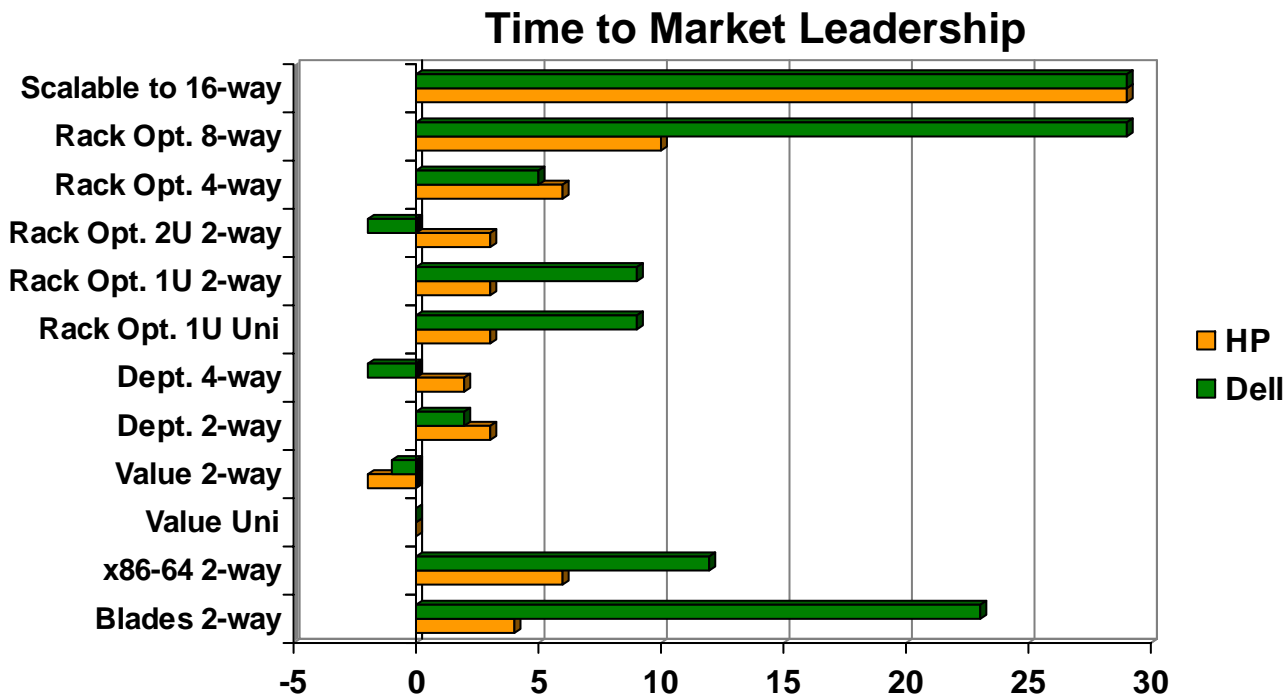


IBM eServer xSeries Directions





IBM Differentiators



Hardware Design Innovation

Enterprise X-Architecture™

Memory ProteXion™

XpandOnDemand™ Scalability



IBM Differentiators



IBM eServer x445



IBM eServer x346



IBM eServer BladeCenter



IBM eServer x365



IBM eServer x336

**Comprehensive
Portfolio**

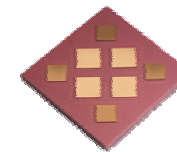


IBM eServer x206

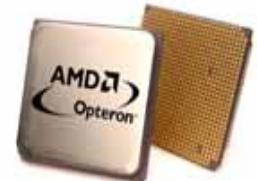


IntelliStation

**Hardware
Design
Innovation**



POWER





IBM Differentiators

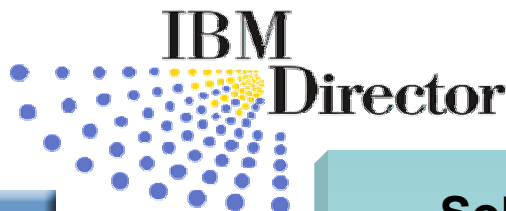


IBM eServer
BladeCenter



Cluster 1350

SMB Express Offerings



**Solution
Enablement**

**Comprehensive
Portfolio**

**Hardware
Design
Innovation**





IBM Differentiators



IBM Global Services



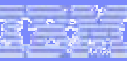
Quality
IBM

**Hardware
Design
Innovation**

**Comprehensive
Portfolio**

**Solution
Enablement**

**Client
Experience**



IBM Differentiators

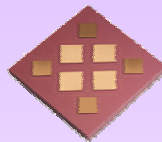
Hardware Design Innovation

Xtended Design Architecture

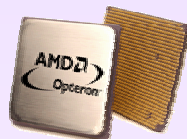
Enterprise X-Architecture™

Leadership time to market

Comprehensive Portfolio



POWER



Client Experience



CDAT Consolidation

IBM Global Services

IBM Global Financing

Team IBM

Solution Enablement

BladeCenter

Cluster 1350

IBM Director

Virtualization Engine

Linux

SMB Express Offerings

On Demand

Grid

Comprehensive Ecosystem



IBM eServer Industry-Standard Portfolio: August 2, 2004

eServer xSeries

Enterprise Scale Up Servers

2-way to 16-way SMP



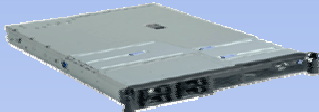
xSeries 445



xSeries 455

Scale Out Rack Optimized Servers

Uni to 4-way SMP



xSeries 336



xSeries 382



xSeries 365



xSeries 306



xSeries 346



xSeries 343
NEBs Solution

Distributed Tower Servers

Uni to 4-way SMP



xSeries 206



xSeries 226



xSeries 236



xSeries 255

**IBM
Director
4.2**

eServer

Enterprise Scale Out Offerings

Uni to 4-way nodes, scalable clustering



eServer
BladeCenter



eServer 325



IBM eServer Cluster 1350

IntelliStation Workstations

Uni to 2-way SMP 2D - 3D Graphics



A Pro



M Pro



Z Pro



Market Trends

Inflection point for Intel server segment

1. Market migration to 64-bit extensions
2. Performance far exceeds previous offerings
3. ROI pressures while IT demands increase
4. Intel servers proliferating throughout the enterprise
5. Power and thermal challenges in datacenters
6. Increasing clustered and scale out solutions

Over time, the market has progressed as new technologies evolved. Business, and the way we do business, are also changing.

These changes present unique new challenges ... and opportunities.

Converting challenges into opportunities requires a trusted partner with experience, insight and a commitment to work with you for your business advantage.



Client Needs Drive IBM Offerings

- IBM extends capabilities of commoditized industry standard components
- IBM's technology innovation builds upon extensive heritage and the greatest 64-bit experience
- IBM client insight delivers business-focused solutions
- IBM offers an optimal combination of key features

Performance

- 64-bit extensions
- Enhanced memory expansion
- Faster I/O
- External app scalability

Availability

- Integrated RAID
- Memory mirroring and on-line spare
- Redundant & hot swap components
- Calibrated Vectored Cooling™

Manageability

- Visible alerts
- Remote mgmt
- Quick serviceability
- Rapid deployment
- Mgmt tools

Flexibility

- Internal scalability
- Choice of 32- or 64-bit perf
- Modular server & storage solutions
- OS choices

Technology Leadership

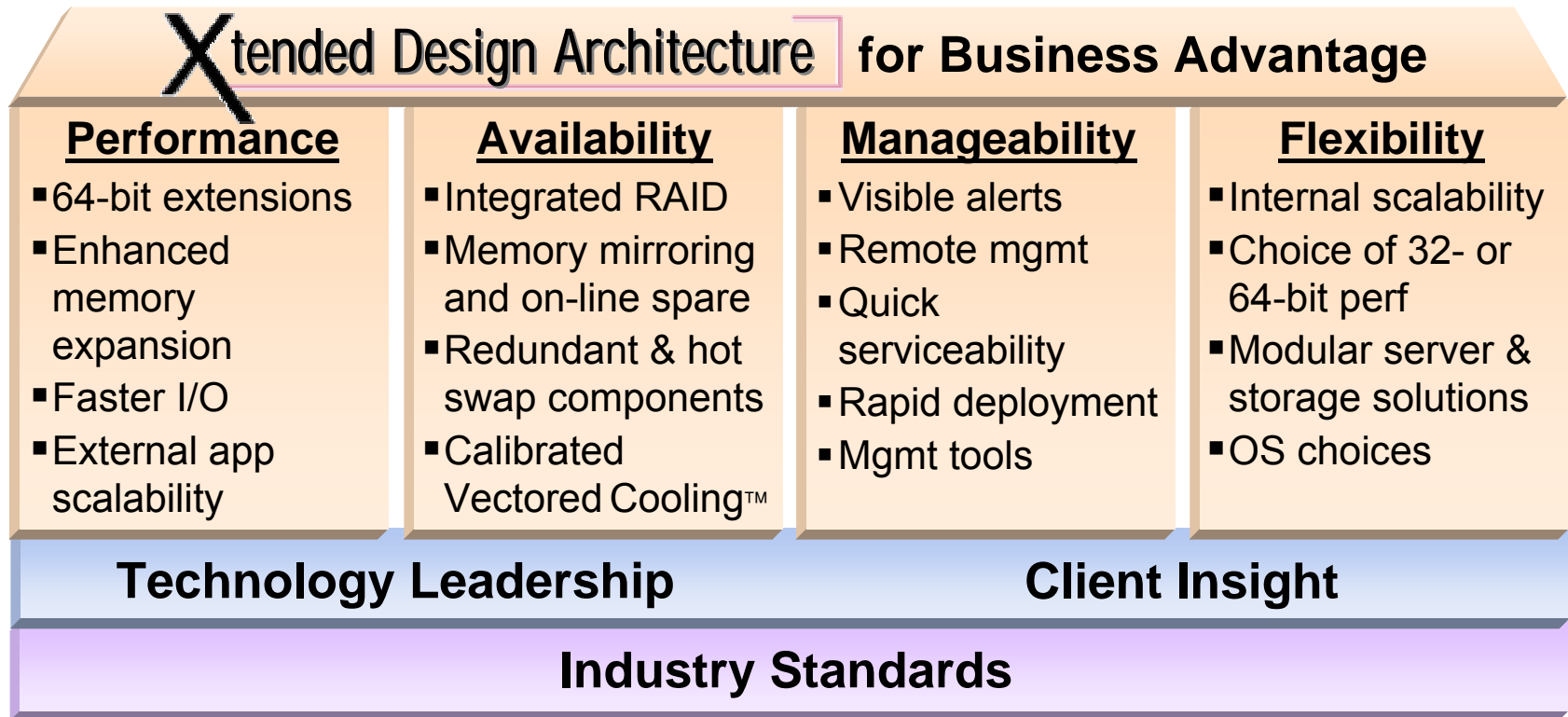
Client Insight

Industry Standards



IBM Delivers **X**tended Design Architecture

- **Xtended Design Architecture combines these elements, providing our clients with competitive advantages**





The Formula for Business Advantage

- Optimized workloads
- Higher throughput

- Confidence
- Business continuity

- Lower cost of computing
- Less complexity
- Increased IT productivity

- Infrastructure simplification
- Pay as you grow
- Investment protection

Xtended Design Architecture for Business Advantage

Performance

- 64-bit extensions
- Enhanced memory expansion
- Faster I/O
- External app scalability

Availability

- Integrated RAID
- Memory mirroring and on-line spare
- Redundant & hot swap components
- Calibrated Vectored Cooling™

Manageability

- Visible alerts
- Remote mgmt
- Quick serviceability
- Rapid deployment
- Mgmt tools

Flexibility

- Internal scalability
- Choice of 32- or 64-bit perf
- Modular server & storage solutions
- OS choices

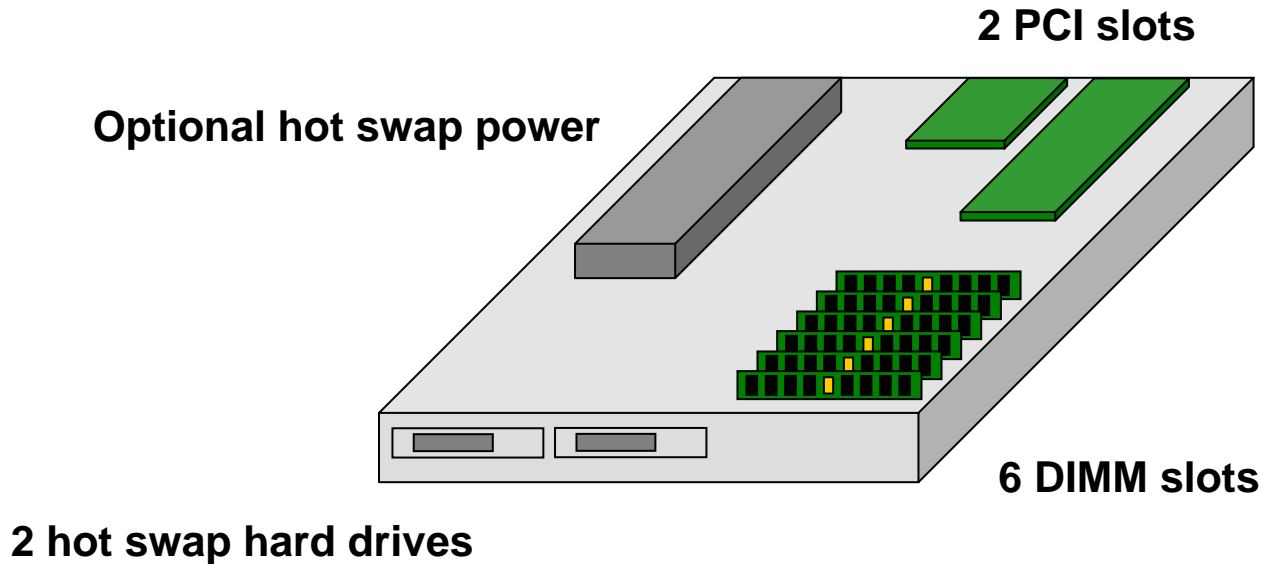
Technology Leadership

Client Insight

Industry Standards

Industry Standard 1U, 2-way Server

Scalability, Performance and Availability Features Limited by Thermal Envelope





Xtended Design Architecture at Work

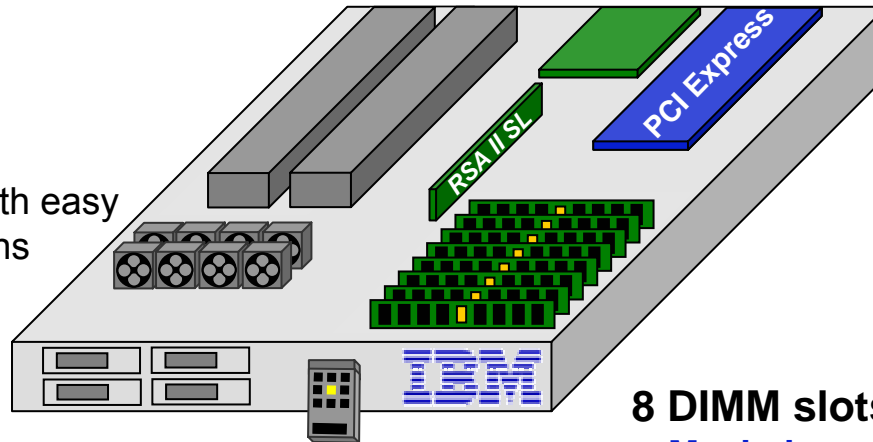
x336 high availability, high performance application server enabled by Calibrated Vecteded Cooling™

Optional hot swap power

- **Maximize uptime** with rear access hot swap power for easy upgrades

2 PCI slots

- **Increase performance** with optional PCI-Express



Hot swap fans

- **Maximize uptime** with easy access redundant fans

Optional RSA II SlimLine

- **Preserve full PCI expandability and improve mgmt** with optional integrated systems mgmt controller
- IBM Director ships standard with every system

Up to 4 hot swap HDDs

- **Higher availability** with RAID 5 plus hot spare
- **Additional flexibility** with support for SCSI or SATA
- **Better performance** with more spindles

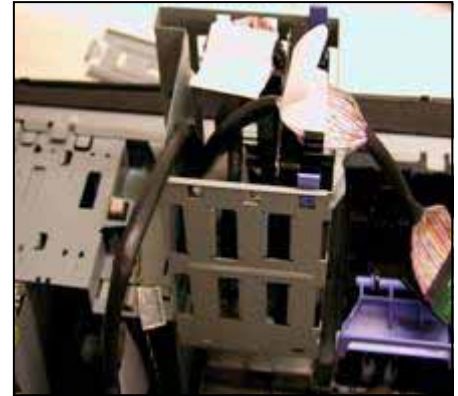
Drop down light path

- **Improves** in-rack manageability
- **Improve** uptime

8 DIMM slots

- **Maximize performance** with max memory
- **Maximum investment protection** by upgrading without parts on the floor
- **Higher availability:** protect more memory with mirroring and hot-spare
- **Save money** by using less expensive 2GB DIMMs to get to maximum memory

Replacing Fixed Drive the Industry Standard Way



- Remove cover to access drive (how long will this server be down?)
- Isolate drive and remove cabling (watch those wires!)
- Unscrew drive tray (bring your toolkit!)

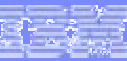
Xtended Design Architecture at Work

IBM eServer xSeries Servers with Simple Swap SATA Drives

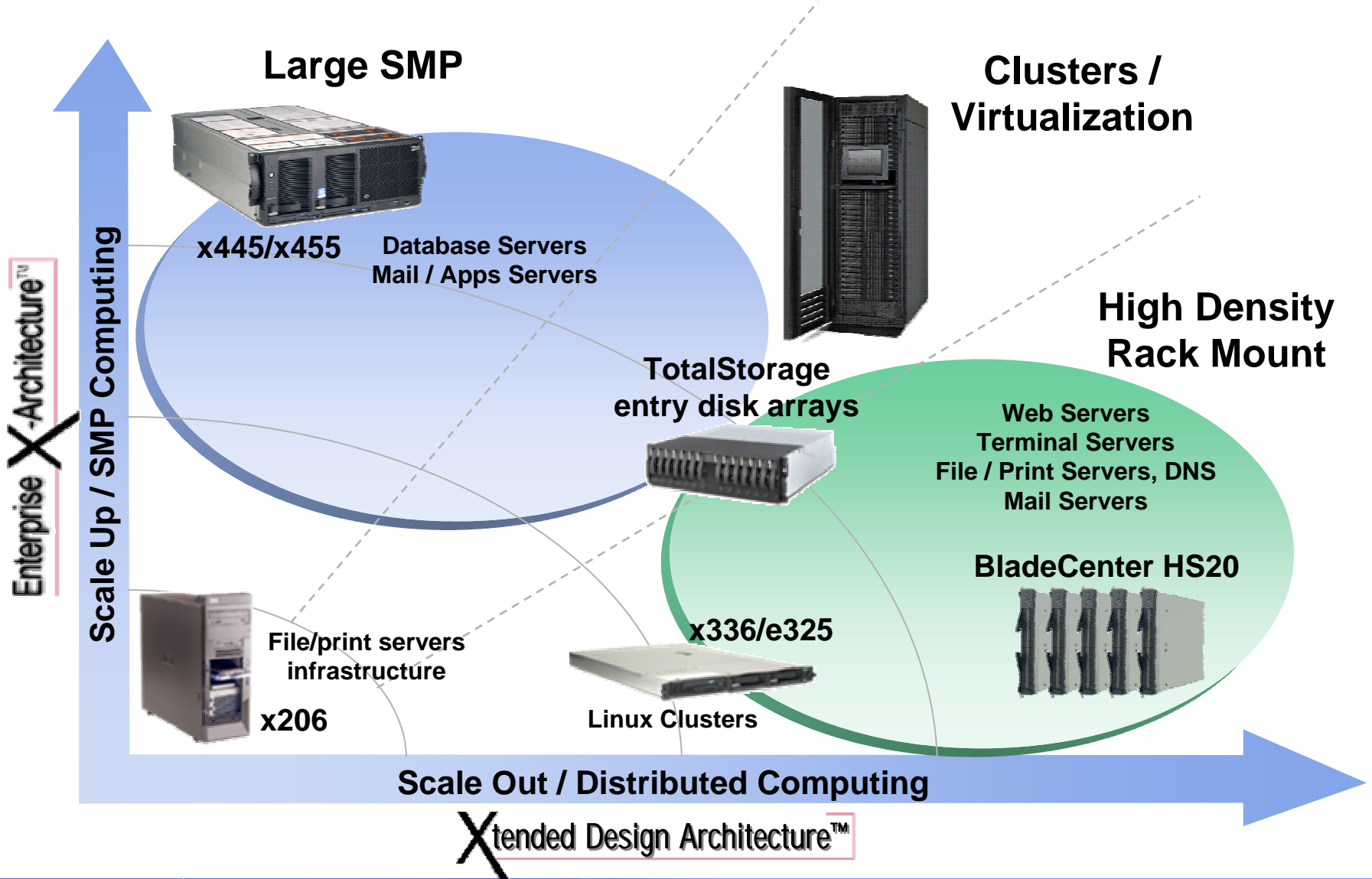


Remove front panel and security bar and slide out drive

- **Increased uptime**
- **Easy, tool-free upgrades and serviceability**



IBM eServer xSeries Portfolio





IBM Director Overview

Simply Smart Tools to Make IT Management Easier

■ Highlights

- ▶ Award-winning workgroup manager
- ▶ Integrated suite of tools for consistent, single point of management
- ▶ Automates IT tasks such as hardware detection / configuration, monitoring / alerting, maintenance / updates, and software deployment
- ▶ Enables seamless upward integration into enterprise management products (ie. Tivoli, OpenView, UniCenter)

■ IBM Director 4.2 Enhancements

- ▶ Platform for cross-series management capabilities in the IBM Virtualization Engine
- ▶ Expanded Linux support including system health
- ▶ Convenient built-in subscription service to simplify delivery of the most current product updates
- ▶ Server Plus Pack additions to further optimize server performance and availability



“What really impresses us, though, is the excellent IBM



Director network-management software that comes with the server. Director allows central IT to manage remote networks.”

PC Magazine, 5/26/04



Xtended Design Architecture **Delivers Value**

Control Costs

- Buy fewer, more powerful servers
- Reduce hands-on maintenance – systems are easy to buy, configure, deploy, manage and service
- Increase density to reduce critical floor space

Investment Protection

- Run existing 32-bit software faster than ever, and upgrade to 64-bit when ready – without changing servers
- Expand memory to increase performance
- Pay as you grow

Mission Critical Confidence

- Run business-critical applications on reliable platform
- Maximize uptime in distributed, unstaffed environments
- Protect data and operations with redundant capabilities




August 2 Launch Press Coverage


“Innovation matters again – and we believe that it's not just the processor, but what resides around it.”  *-Stuart McRae*

“That is what  a significant portion of the market was waiting for.” *-Susan Whitney*

“Advanced cooling capabilities enable IBM  to add some pretty cool stuff to these boxes.” *-Alex Yost*

“Customers  are looking for something more than just a very good distribution system.” *-Susan Whitney*

“It's tough to know how any vendor can innovate on products like this that have such extremely thin margins.’ If anyone can do, though, it’s IBM.”  *-Charles King, Sageza*

“IBM will ... differentiate the systems with mainframe- style capabilities packaged under the name Xtended Design  Architecture.”

“commoditization for Intel servers is  over, creating new opportunities for server vendors to garner more market share.”



**Practical Innovation.
Critical Business.
Virtual Future.**

