

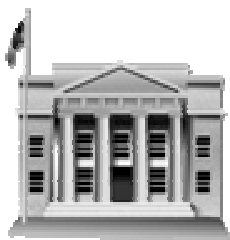


Discovering the Value of SOA for WebSphere Business Process Management



ProcessArt

**BPM – Business Process Management –
Value of Modeling and WebSphere Business Modeler v6**



SOA on your terms and our expertise

Roland Peisl

IBM SWG WebSphere Process Integration
Business Process Management Competency Center
IBM Corporation, Boeblingen Lab, Germany
eMail: psl@de.ibm.com



© 2006 IBM Corporation



Agenda

- **What is Business Process Management (BPM)?**
- **BPM with IBM WebSphere**
- **Value of IBM WebSphere Business Modeler**
- **Generic Modeling Approach**
- **WB Modeler and Software Engineering**
- **Summary**



What is Business Process Management?

Starting with modeling

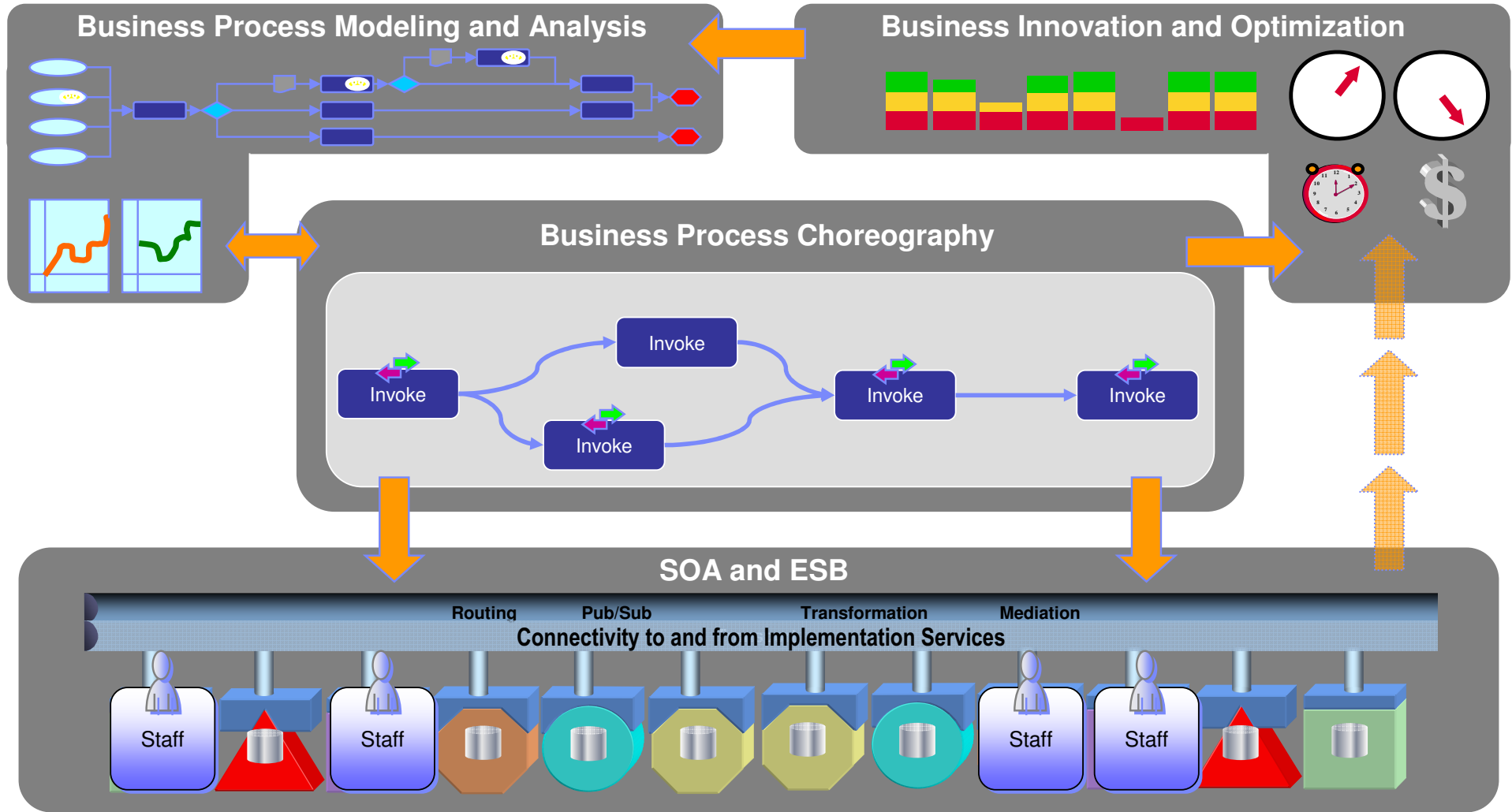
What is Business Process Management – Gartner definition

“BPM is a general term describing a set of services and tools that provide for **explicit** process management (e.g. process modeling, analysis, simulation, execution, monitoring and administration), ideally including support for human and application-level interaction.”



Source: Gartner
May 2001

Disciplines of Business Process Management



What is process? Process is:

end-to-end

- Understand what you do end-to-end
- Understand what you don't need to do (anymore)
- Identify business **strengths for sustainable competitive advantage**
- **Identify business weaknesses** and seek for improvements
- Simulate business change before running the change
- Measure and monitor your business performance

Our clients ask four questions:

1. How much does it **Cost**?
2. How much **Time** does it take?
3. How many & what **Resources** are required
4. Where are my **Problems**?
 - Bottlenecks
 - Analysis for root cause
 - Return on Investment
 - Anything else.....

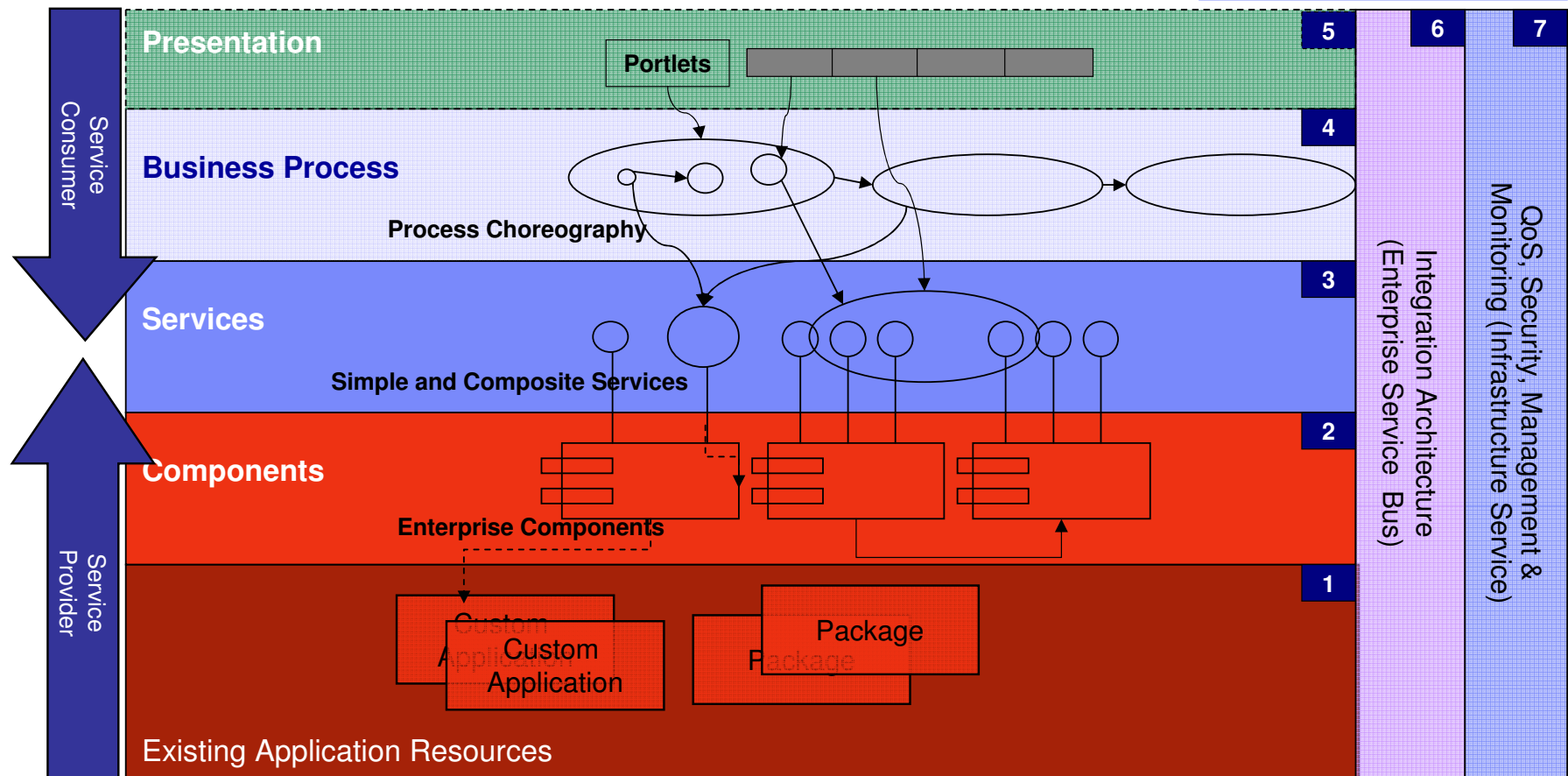
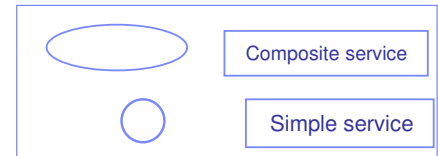
The process centric company: "...thinks of the company as being made up of a set of processes and those processes can be used to organize everything else in the company", Paul Harmon in "The process-centric company".

What is Service-Oriented Architecture (SOA)?

**How does it link
to SOA?**

BPM drives the SOA implementation, orchestrating business services conform to business processes

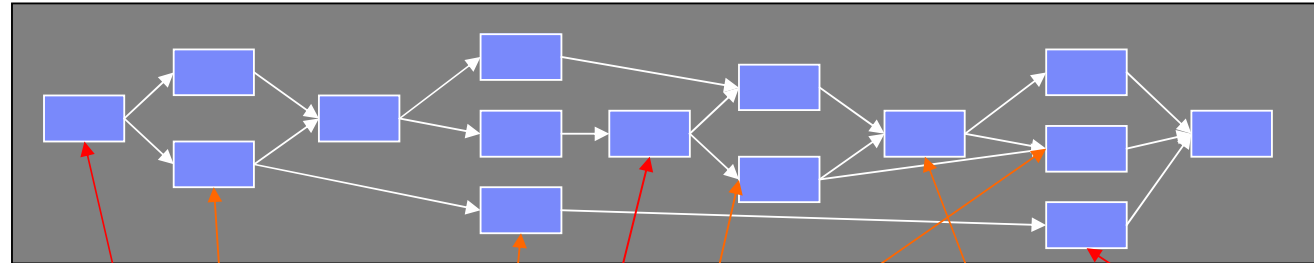
An SOA is composed of multiple layers. At the heart of the SOA are the business processes that define the Services and Components required that realize them.



IT Enablement – Business processes exploiting business services – Separation of Concerns, and **Flexibility**

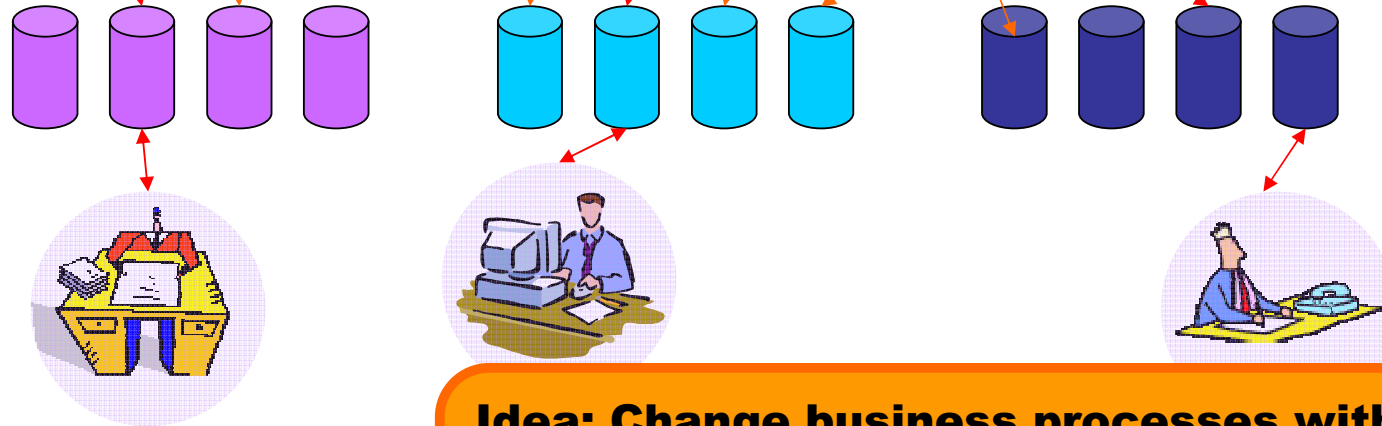
Business Process:

Development across people, information, applications and enterprises



Business Services:

Development and/or identification of required software components, as required from business



Services may be composed of other services again, including processes!

Idea: Change business processes without affecting service implementations, and change service implementations without affecting business processes...

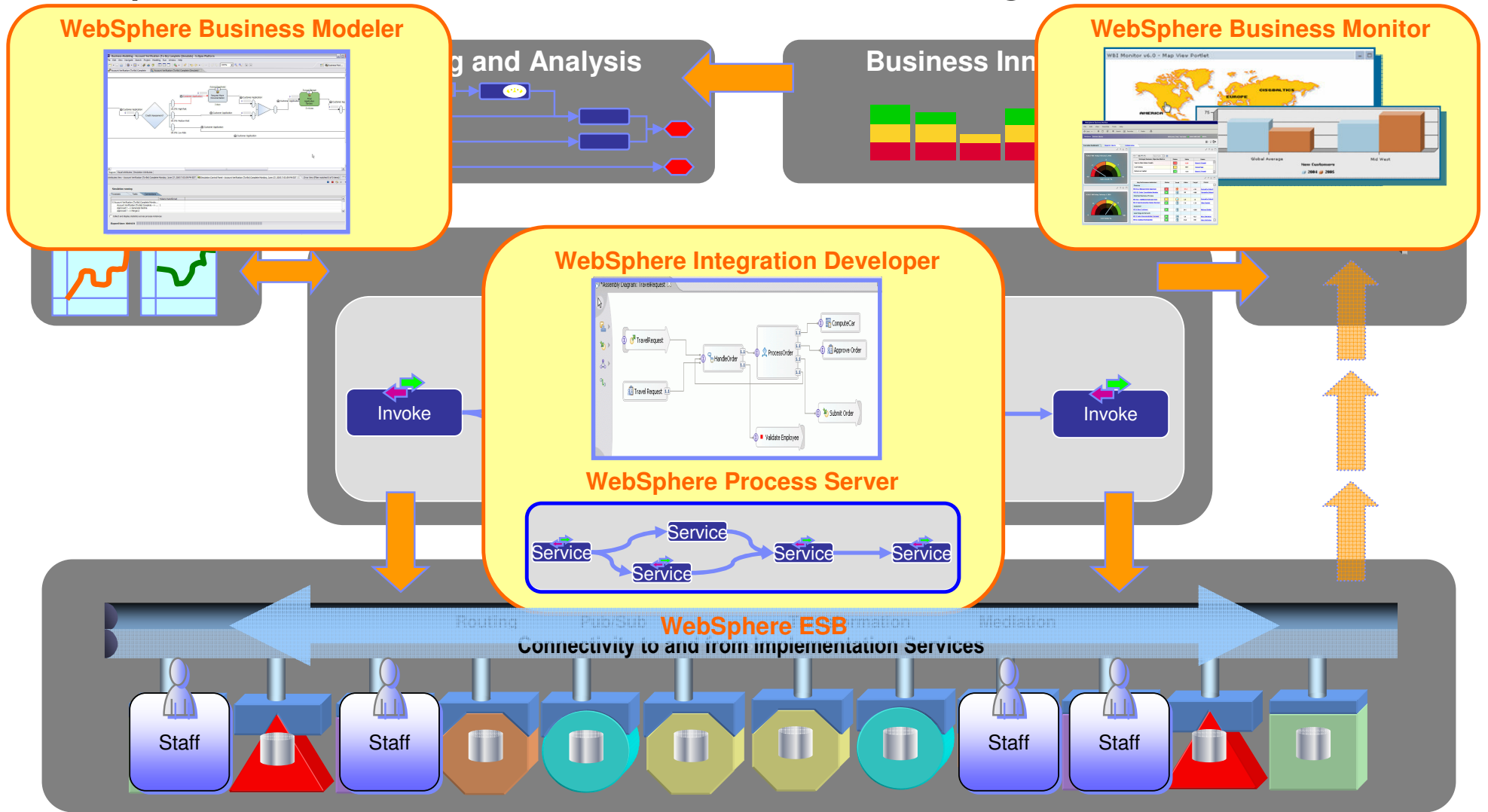
(not possible for all required process/services changes, but for many...)



BPM with IBM WebSphere

V6 Offering

Disciplines of Business Process Management



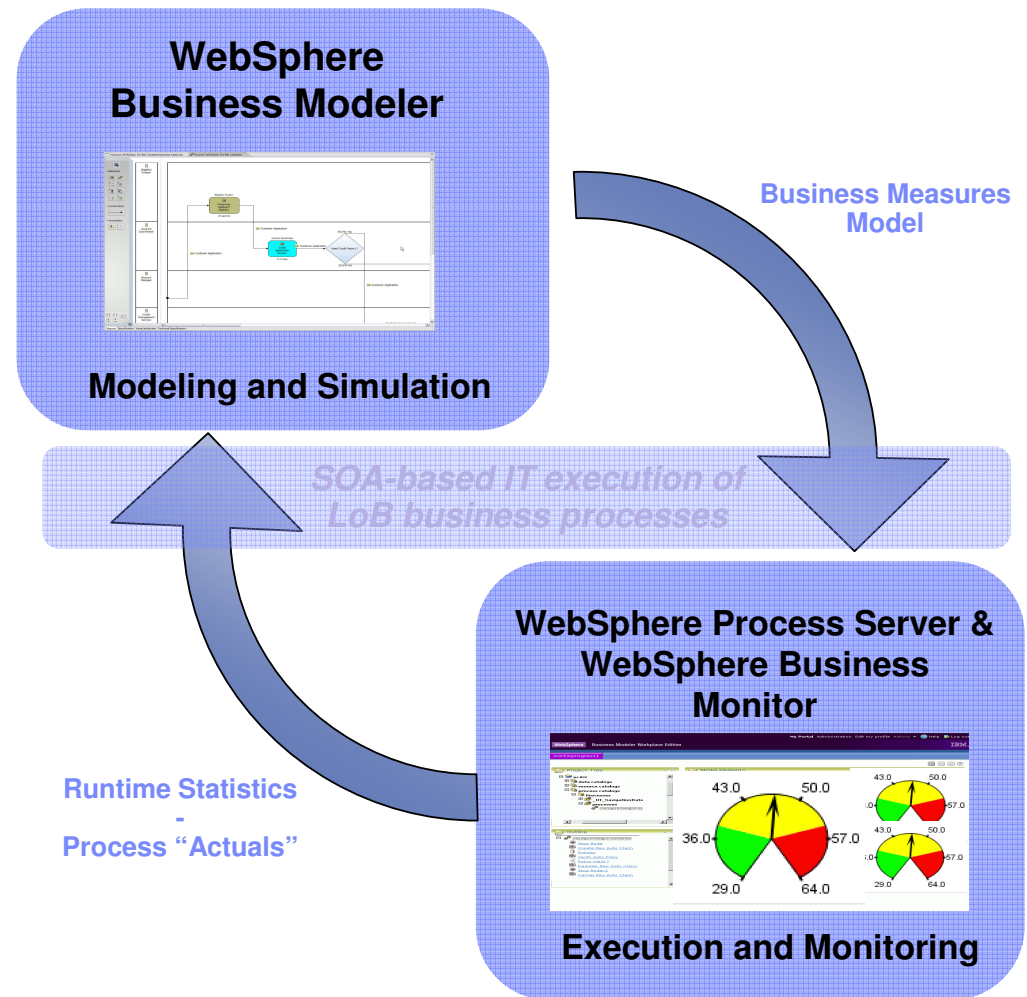
Feedback for Continuous Improvement

- Leverage real information about your business**

- Better decisions, quicker
 - Core business facts (runtime statistics) from monitor are passed back into modeler for simulation, analysis, diagnosis, and action

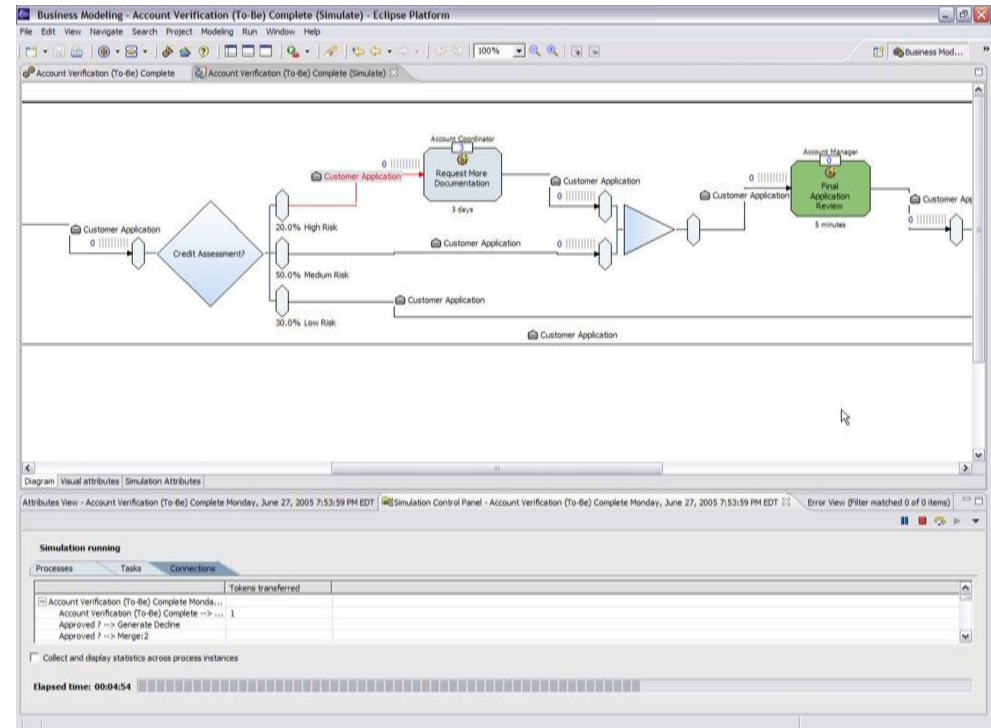
- Improve your business**

- Business process improvement
 - Discover true process behaviors
 - Fact based simulation leading to improved process design for the next solution deployment

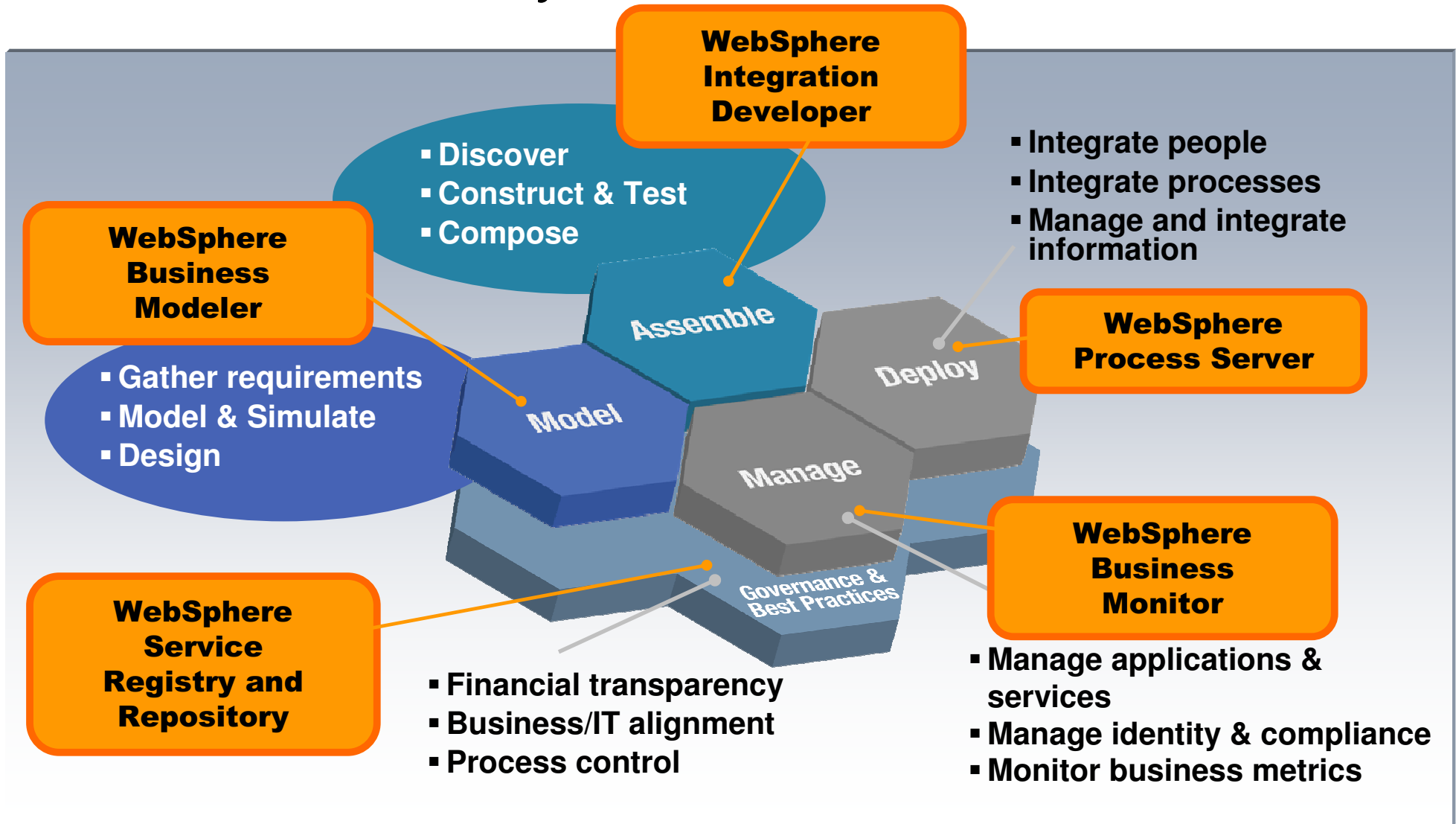


WB Modeler – Simulation for Sophisticated “What If” Analysis and Optimization *before* Development

- Predict your business operation outcomes by running “what if” scenarios
- Help determine and justify projects that will generate the greatest returns on investments, and help build your business case
- Generate comprehensive data around cost, time, and resource savings
- Optimize by looking at bottlenecks and workload imbalances before moving any changes into production



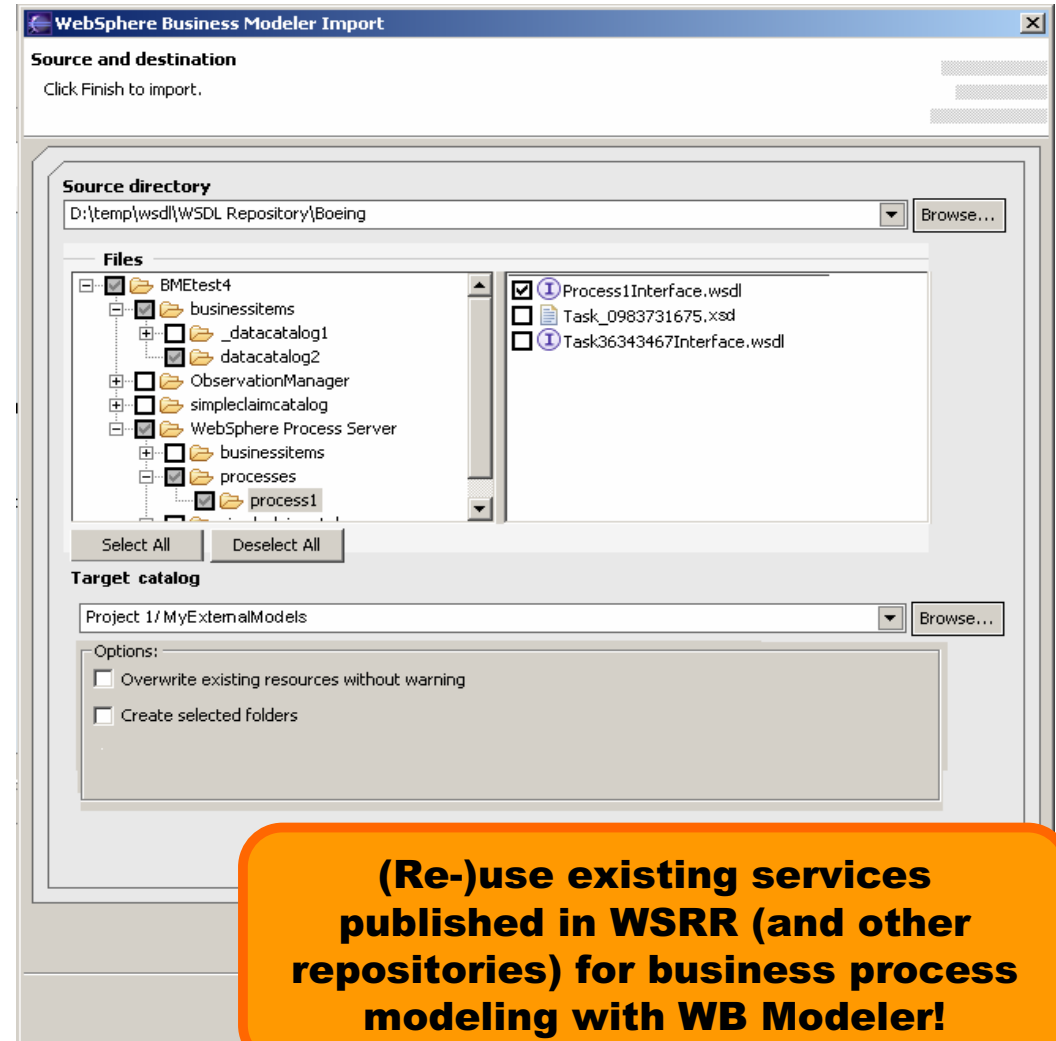
BPM on SOA – Lifecycle



WB Modeler – Business services import support



- Ability to import business services (WSDL) and business objects (XSD):
 - ▶ Provide the capability to import multiple wsdl/xsd files from different file directories or well-known service registry (WSRR)
 - ▶ Preserves the contents of the wsdl and xsd files (annotations, port types, bindings, service endpoints, etc) at export time (same structure as import files)



(Re-)use existing services published in WSRR (and other repositories) for business process modeling with WB Modeler!





Value of WebSphere Business Modeler

For ISVs and SIs

Applying governance principles to business process change

Governance

1. Establishing **chains of responsibility** (e.g. process owners), **authority and communication**
2. **Executing measurement and control mechanisms** to enable people to carry out their roles and responsibilities
3. **Implementing standardized rules** how business operations can be quickly adapted to change
 - Reporting guidelines
 - Review boards
 - Decision boards



...leading into Business Transformation...

Governing process change

Manage value

- Align business and IT
- At organizational and project levels
 - Balance risk and return
 - Provide communication material
 - Provide clarity and accountability

Adapt to change quickly and flexibly

- Leverage resources anywhere
- Enable agile sourcing choices
- Use iterative processes to reduce risk

Control risk and change

- Continuously measure to reduce risk
- Control change management
- Monitor process execution, service level agreements and user satisfaction

Governance – Describing guidelines and principles how ‘things’ should be done



Question: How to help decision makers to make the right decisions in order to improve business operations?

Governance – Governing process change

GOVERNANCE DASHBOARD

How to improve business efficiency by improving current business processes?

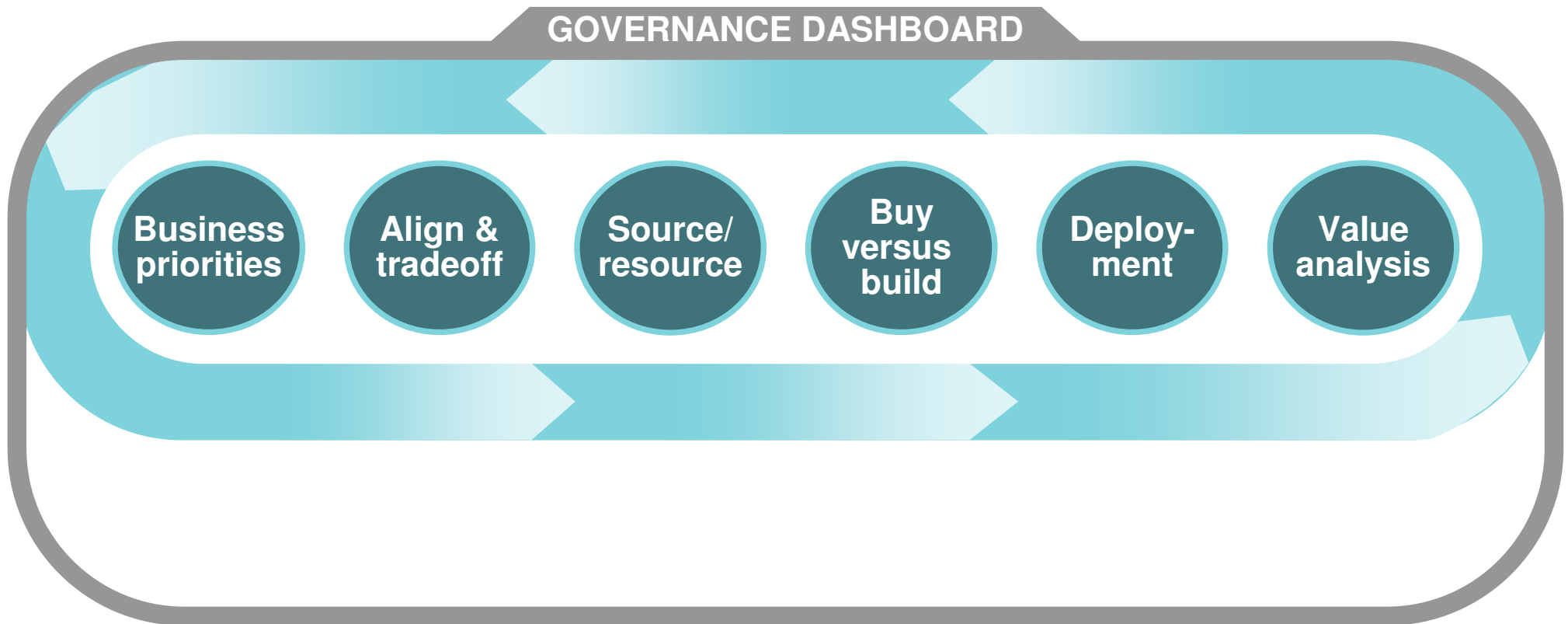
GOVERNANCE

Strategic alignment

**Chains of
responsibility, authority
& communication**

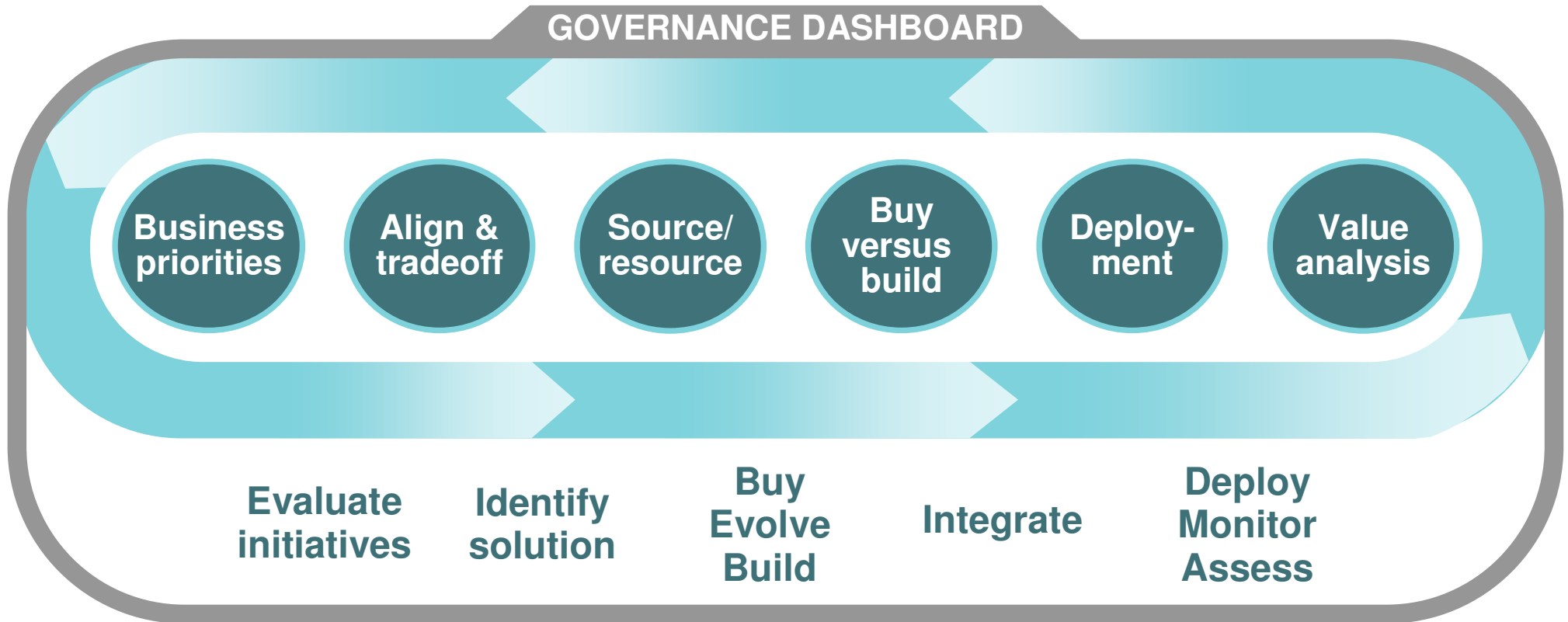
**Measurement &
control mechanisms**

Business Driven Development – Business processes describe how business operations are implemented



The Management Executive team must make decisions to **properly balance risk and return of future investments**. None of these decisions are unique – what’s unique is their impact on business transformation, therefore to current business processes, and changes to underlying software and systems. As businesses need to transform themselves constantly, their business processes need to be highly flexible, which may require new software (services) and to change existing systems.....

Business Driven Development – Business processes describe how business operations are implemented



Informed business decisions drive IT development activities

Business Driven Development – Business processes describe how business operations are implemented

WebSphere Business Modeler fully describes the business processes and all its dependencies to business data, underlying software systems, human resources, and allows cost calculation and time-based evaluations. Visualization of these dependencies allows business decision makers to select the best investment option with respect to process change, after having run simulations to understand the impact of business transformation alternatives.

Business
priorities

Value
analysis

Business Process Management

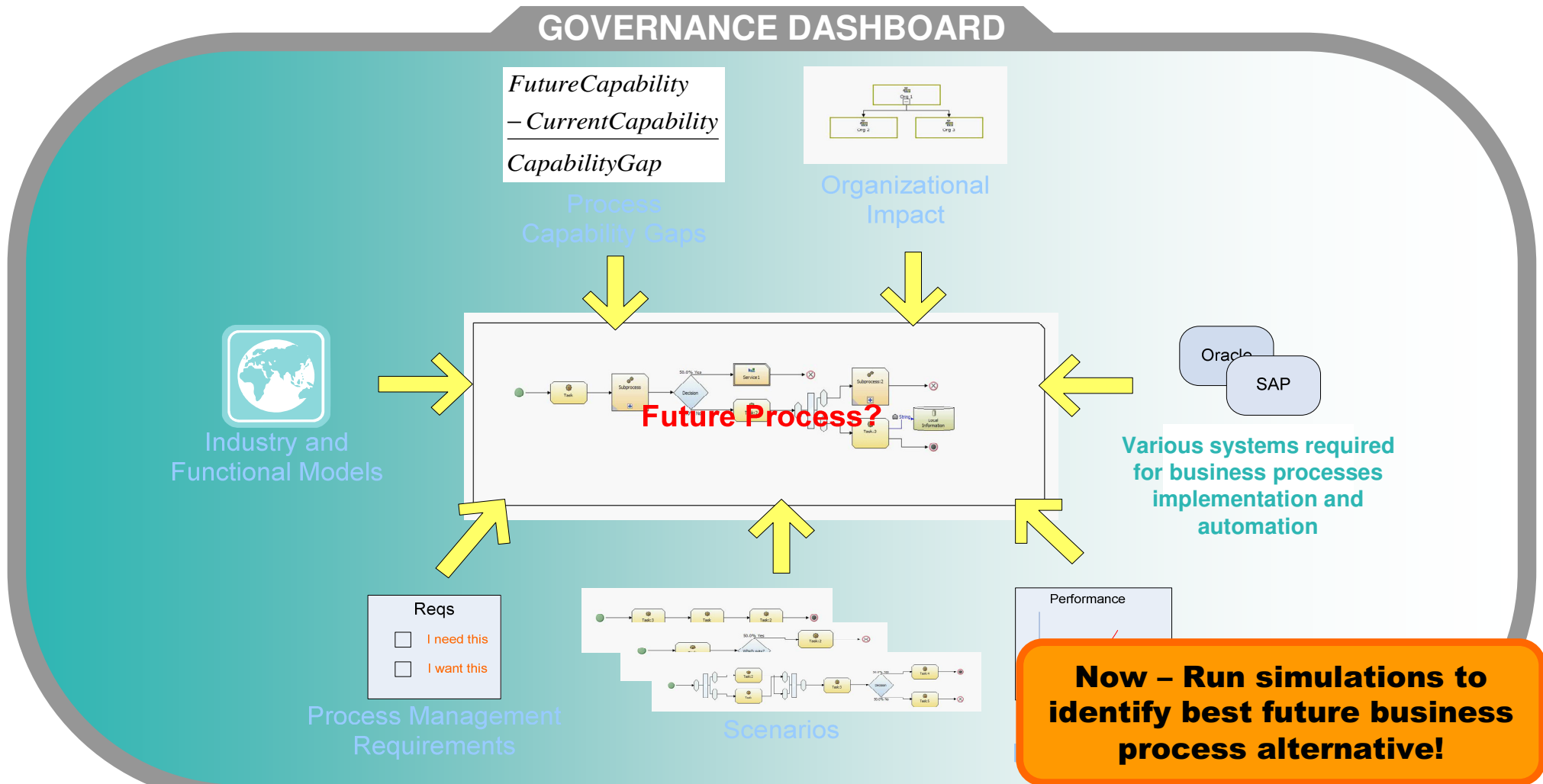
How very well do the current business processes support what business goals?

What resources are required? At what cost and availability?

What parts of the business processes do we own? What's outsourced? How do the interfaces look like? How do we deploy and run them?

Now – did we improve? Or – what else can be improved?

Business Process Improvements – Common Approach to identify optimization potentials



Role of ISVs and SIs – Using WB Modeler

Helping customers for Business Transformation

1. **Showing customers how they operate today by modeling their business processes on required level of detail - LoB**
2. **Brings in industry expertise to improve current business processes, either based-on**
 1. Already implemented assets based on other engagements
 2. Industry standards (process templates, outsourcing strategies, etc)
 3. Identification of customer-specific sustainable advantages
3. **Recommends business process changes to optimize current business processes**
4. **Presents various future business process alternatives, and runs simulations to qualify best future process depending on customer's business goals and budget – Lob and IT**
5. **Introduces SOA concepts to automate business processes and implementation details of business process logic and implementation details –**

WebSphere Business Modeler opens the door for Business Transformation projects.

Generic Modeling Approach

Guidelines for modeling

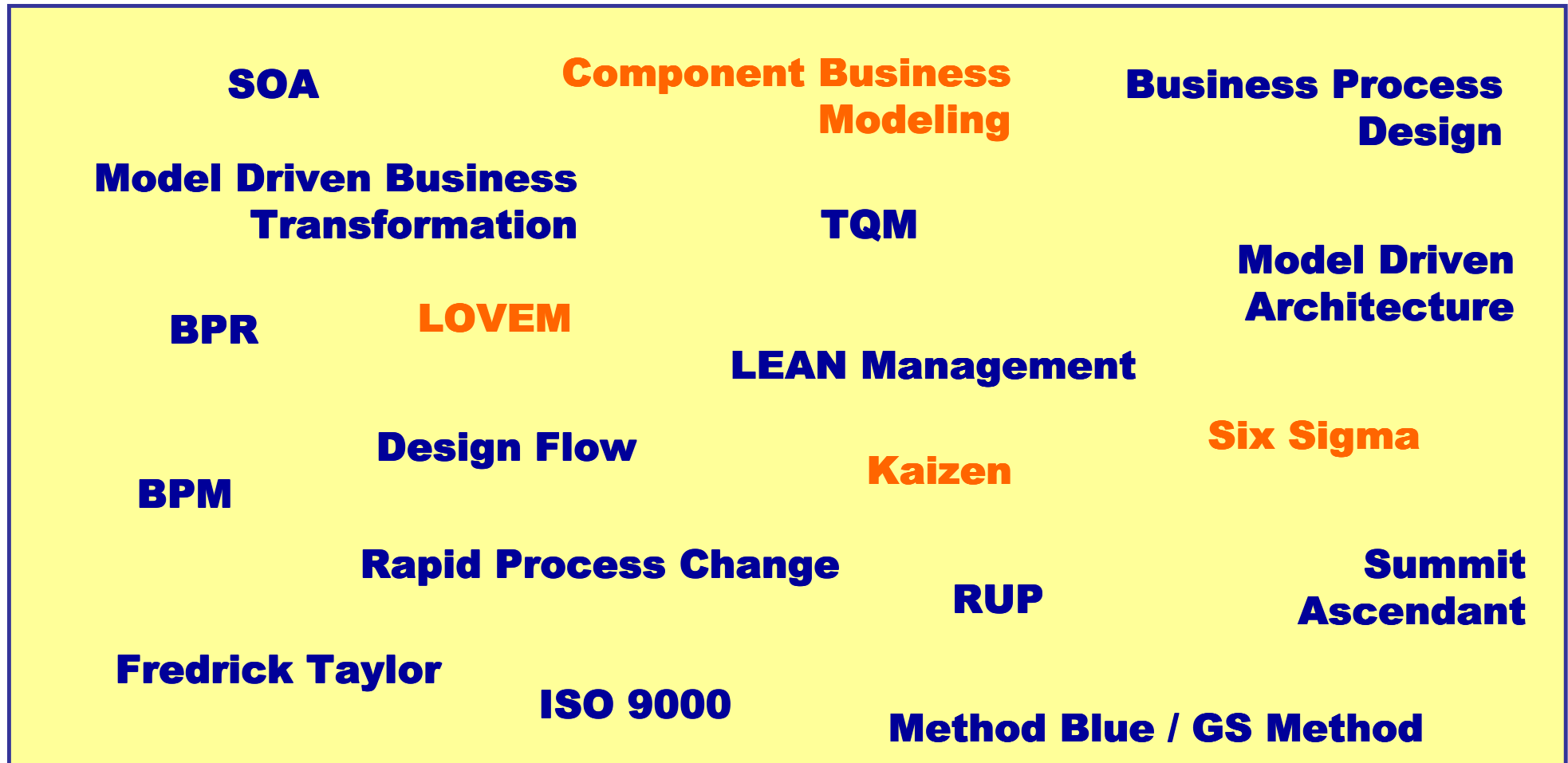
Modeling analogy – 3D CAD – Revolution for the automotive industrie

Why using 3D CAD technologies today?

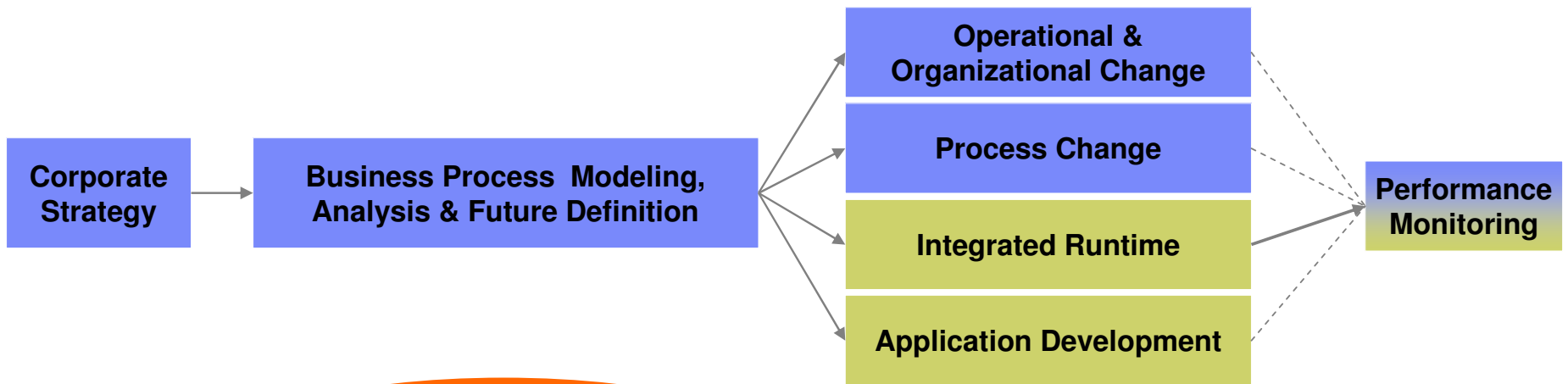
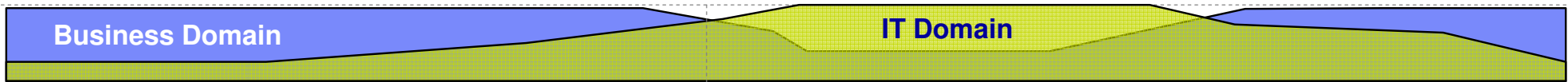
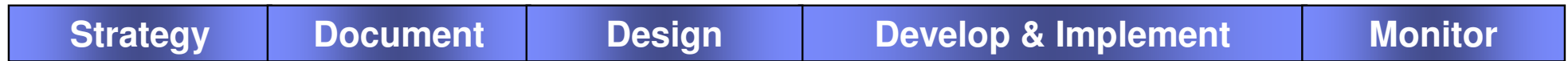
1. In today's economy, market pressures to respond to ever-changing consumer needs have never been greater. These changes shorten product life cycles and increase the need for customized products.
2. Companies which can respond to these consumer demands will be more successful than others. The potential benefits to companies moving to 3D CAD technology are extensive and meaningful to the bottom line, which is: More profit for the company.

All industries today face the same challenges, summarized in the critical need to be able to faster respond to changing markets.... The company's core business processes have to be known and transparent in order to be changed quickly! This can be achieved by following the concepts of BPM and SOA, implemented on IT infrastructures truly supporting these concepts.

Modeling Methodologies, Approaches, & Models



Business Process Modeling – Lifecycle & Required Expertise

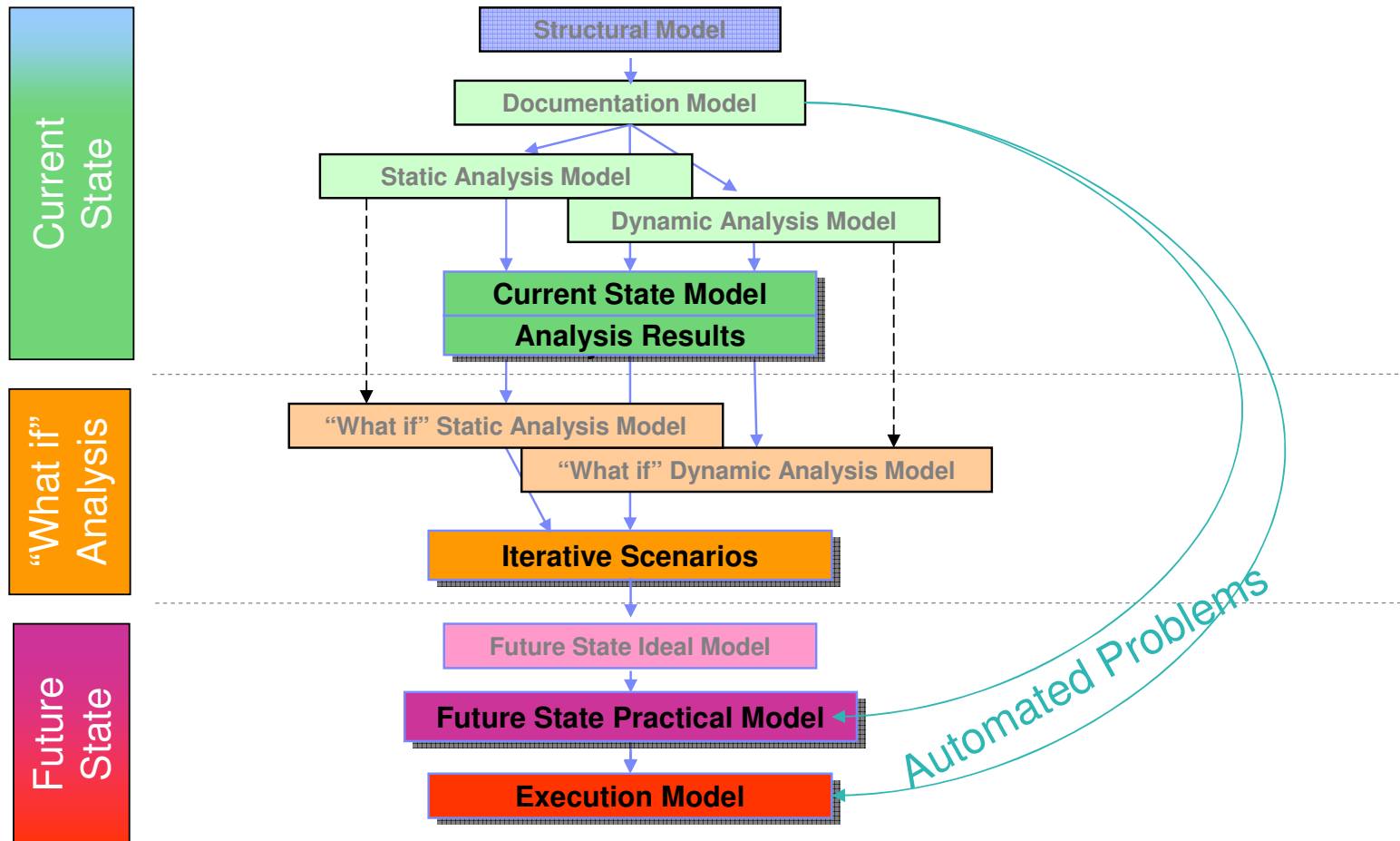


Business Process Modeling – Sample Lifecycle



- Strategy – business strategy is determined and related to business processes
- Planning – plans are made to address particular business strategies through business process reengineering
- Current State Discovery – the current processes in the enterprise are identified, validated and analyzed
- Future State Design and Definition – “what if” scenarios are conducted on current processes to determine potential solutions and the future state is designed and defined, including the future state Execution Model
- Development – new and modified applications are designed, developed and tested, including potential automated workflows
- Rollout – the new or modified process is rolled out to the business. This consists of all aspects of the process including people, knowledge, and technology
- Management – the new or modified process is managed and monitored and business metrics are collected to measure process performance

Business Process Models – By phase

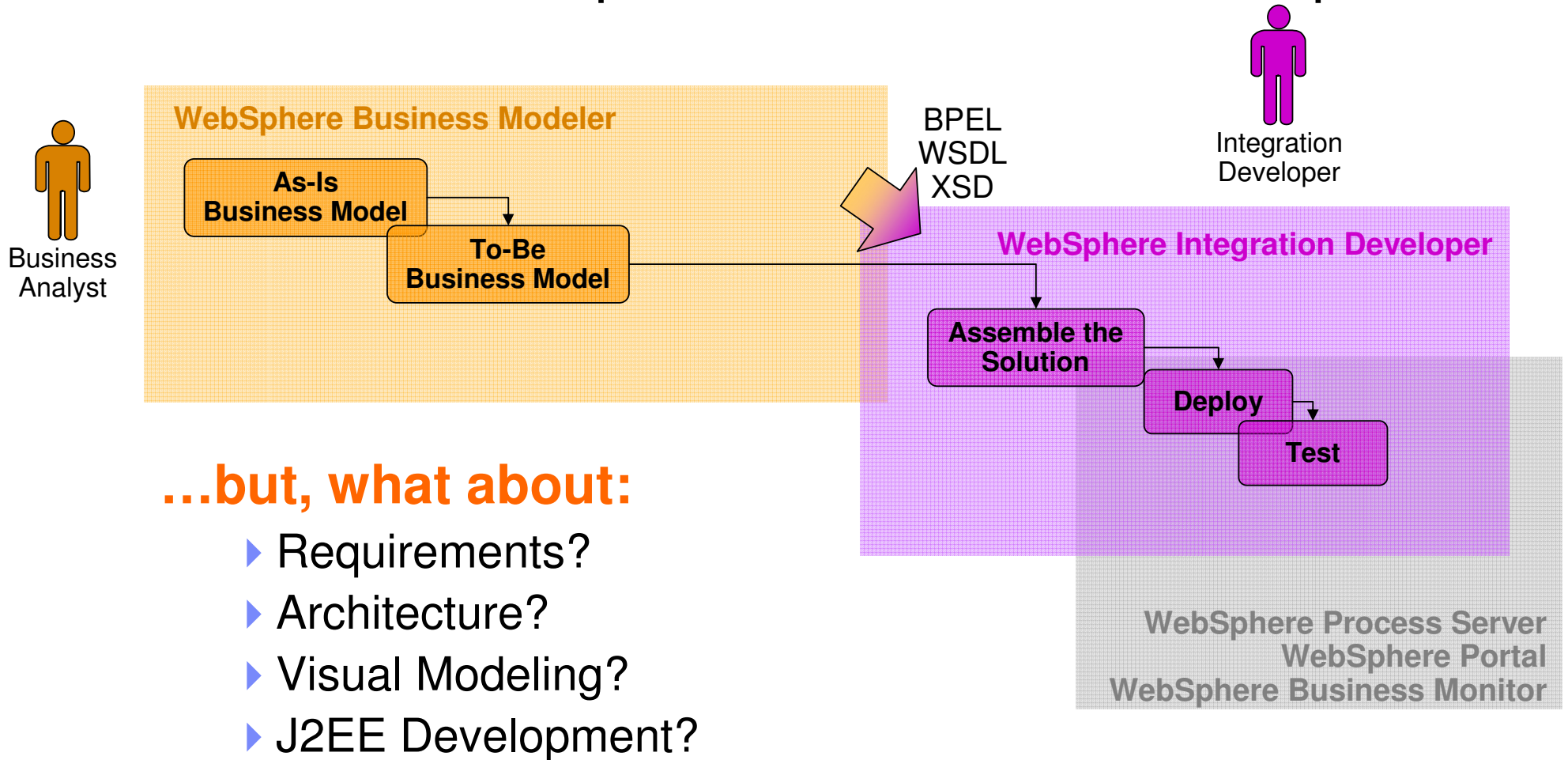


- Diagram illustrates how each model becomes the foundation for the next phase
- The structural model facilitates the documentation of the current state, models are analyzed, results are published, and so on.

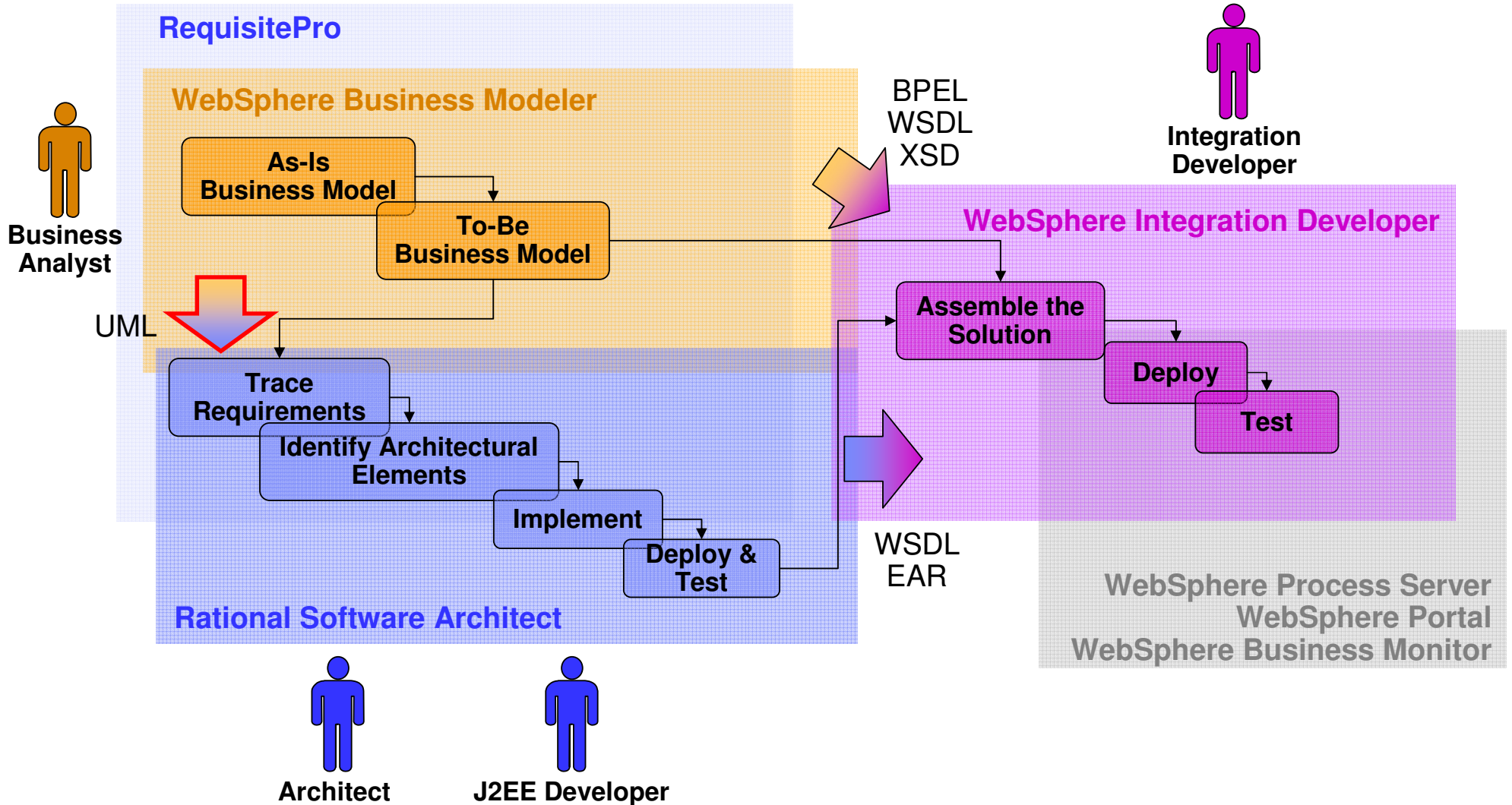
WB Modeler and Software Engineering

Linkage to application/service development

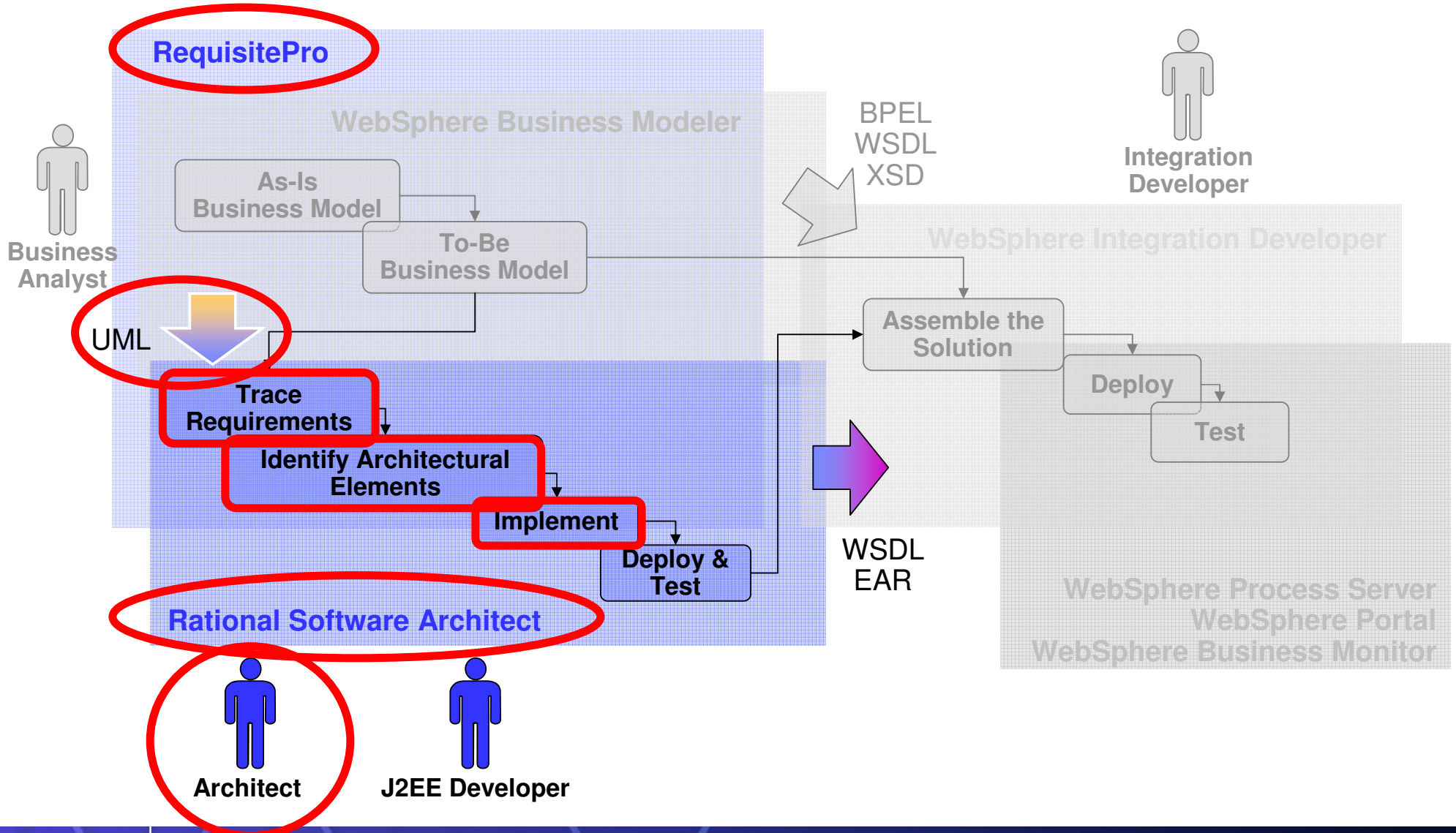
From WB Modeler to process execution – BPM path



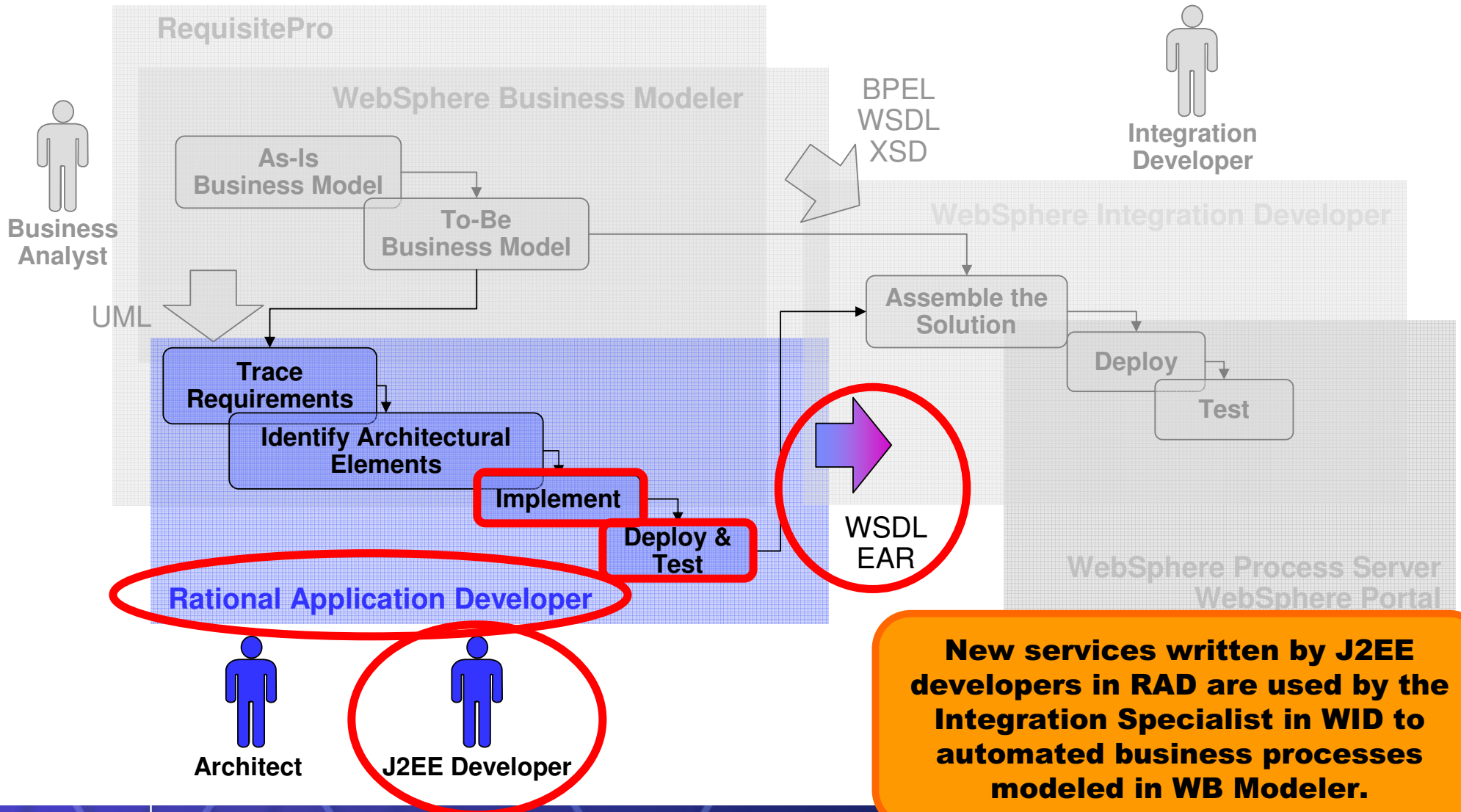
Model-Driven Development for Software Engineering



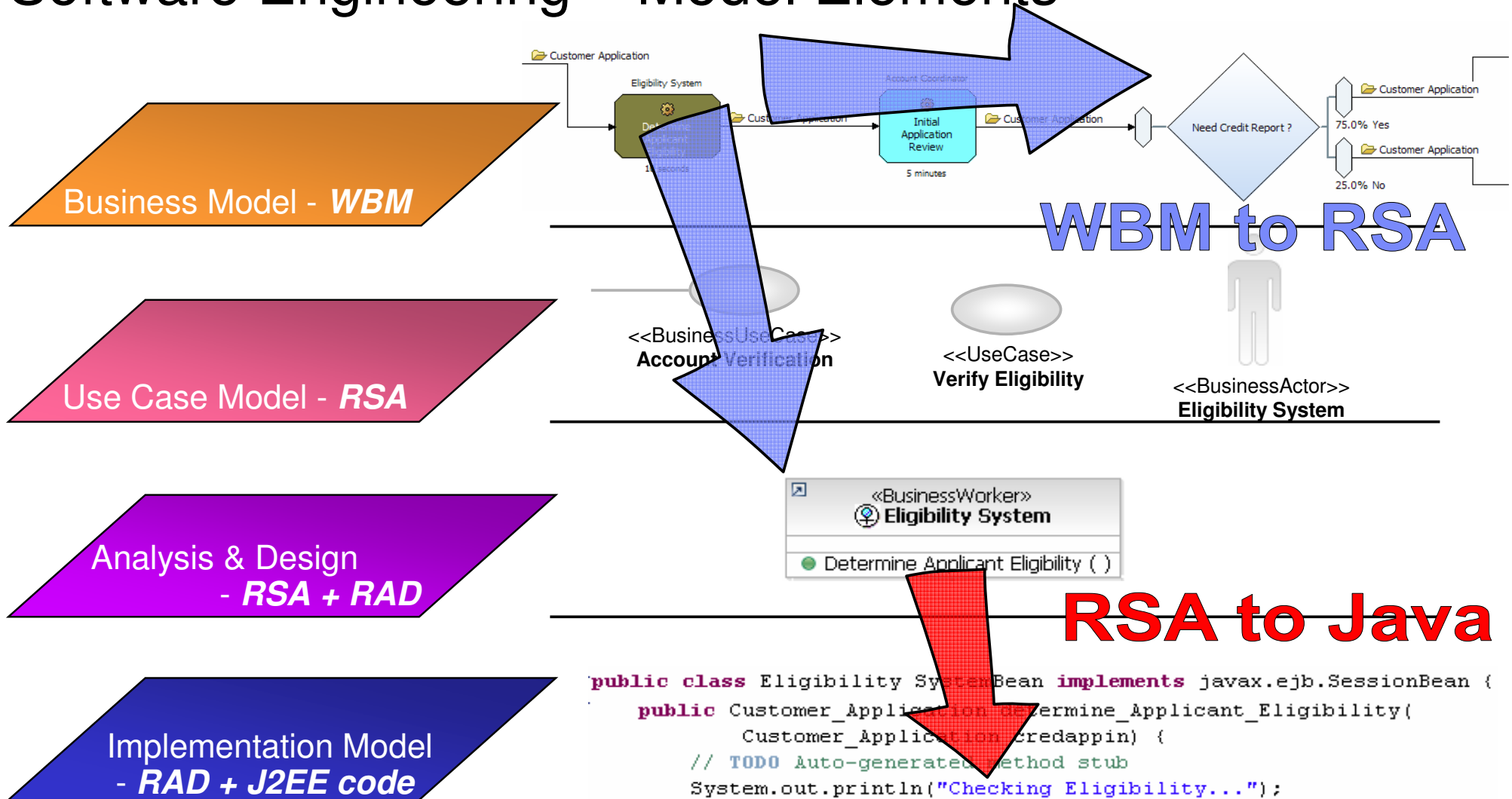
WB Modeler integration with RSA



J2EE Development with RAD

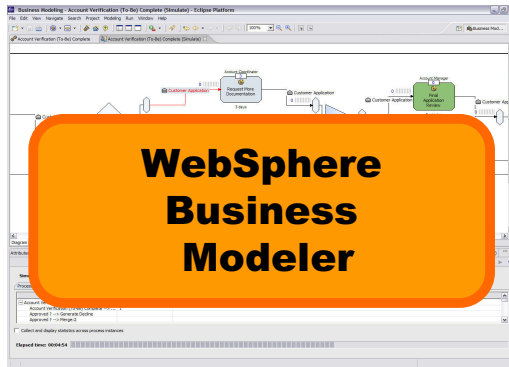


Software Engineering – Model Elements



WB Modeler – Bridges the gap between Business and IT

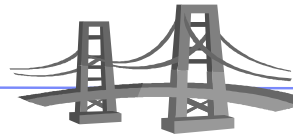
As-Is
To-Be
Analysis
Simulation



**WebSphere
Business
Modeler**

- Process Knowledge & Documentation
- Process Improvement

Business Tool



Application
Development

Activity Implementation /
Test

Rational Software Architect

Rational Application Developer

WebSphere Integration Developer

WebSphere Process Server

IT Tool

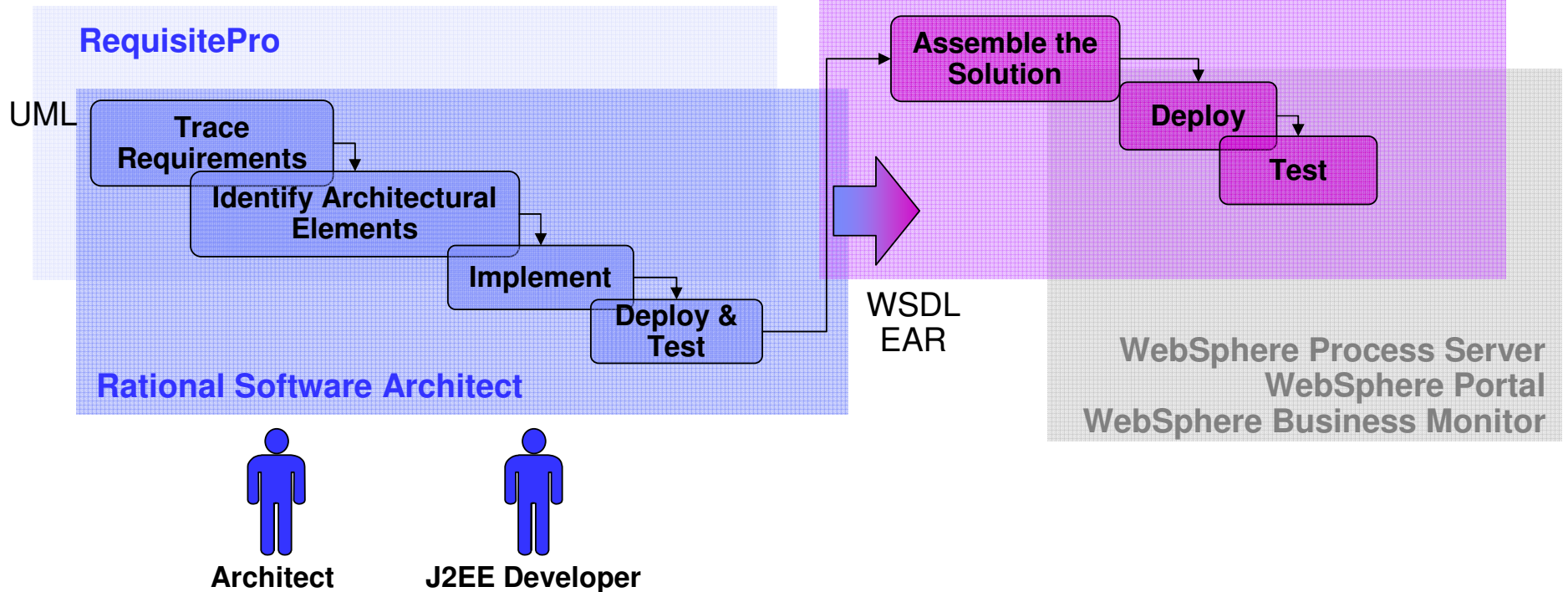
Process-oriented composite application development

Idea: Invocation of services is not hard-coded in JAVA, but: New composite applications follow process orientation. In that case, WID is used for service choreography.

IT driven – not recommended for BPM!



Integration Developer

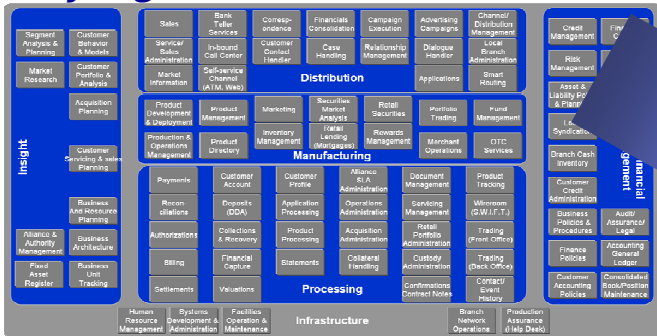




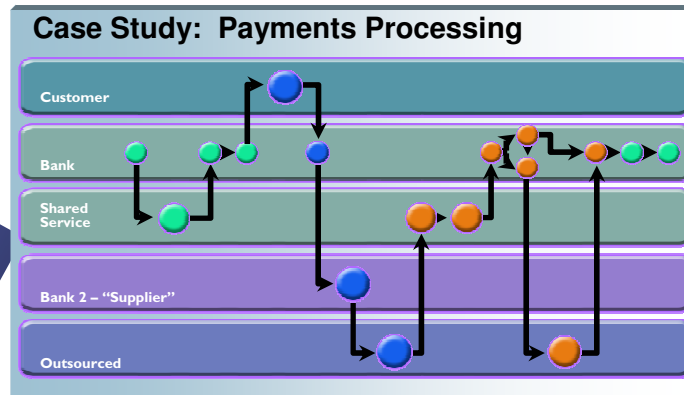
Summary

Starting with the business processes is critical to SOA flexibility

Any higher level business consulting methodologies to understand how business run their business

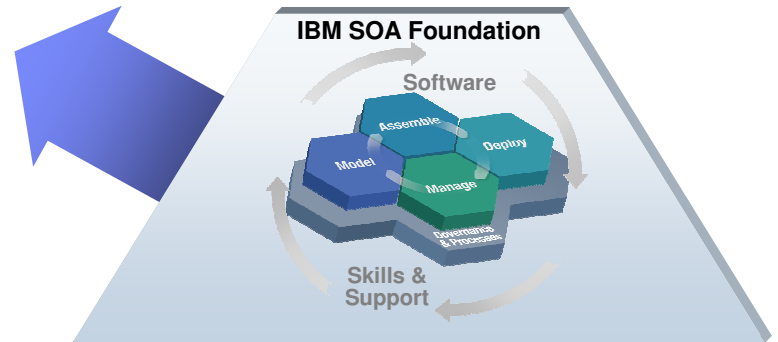


**Process optimization – Business Process Management
BP Modeling and Analysis
BP KPIs and Monitoring**



**Creating IT flexibility – SOA
BP Automation,
Service Implementation**

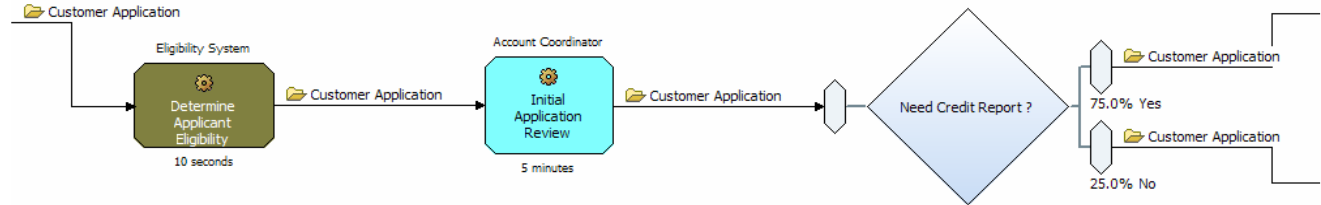
Following a top-down approach from Business down to IT.



WB Modeler V6 – What it allows you to do

First

Document processes as they are today



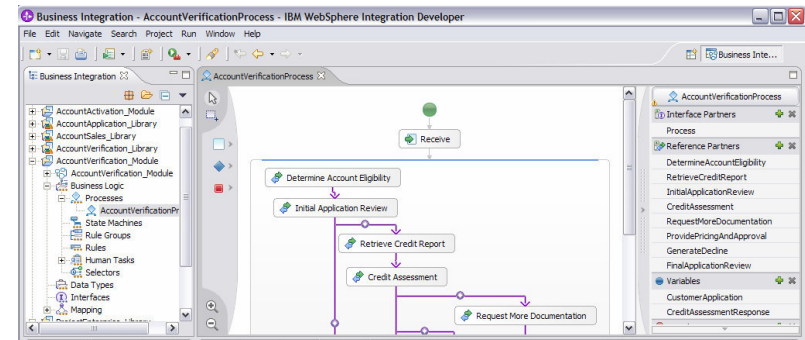
Second

Analyse and test process alternatives to identify best process according to your requirements

	Simulation Result...	Process Name	Weighted Average Rev...	Weighted Average Allocated Res...	Weighted Average Profit	Total Cost
	As-Is	Account Verification (As-Is) Complete	\$222.00	\$22.990868	\$130.709132	
	To-Be	Account Verification (To-Be)	\$282.00	\$20.125571	\$202.474429	
Difference			(\$60.00)	\$2.865297	(\$71.765297)	\$11.765297
Percentage Change			-27.027%	12.463%	-54.905%	12.888%

Third

Specify technical attributes to simplify the transformation from the business model to the execution model



True Business Understanding Requires Multi-Dimensional Models

- **Process Model**

- ▶ Drag & Drop to create the graphical view - the visual representation of the process model.

- **Resource Model**

- ▶ Define resource types, templates and instances – and associate them to the process

- **Information Model**

- ▶ Define the data & its attributes – show how data is used within a business process.

- **Organization Model**

- ▶ Define organization units, locations – show roles, resources and other organizational elements in structured diagrams

- **Analysis Model**

- ▶ Define and analyze process elements for their static relationships, as well as their simulated dynamic behavior

- **Business Measures Model**

- ▶ Define Key Performance Indicators and Metrics that represent the critical performance characteristics to be Monitored

- **Collaboration & Team Support**

- ▶ Publish models for browser based access and commentary & share models in a centralized repository

- **Output Capabilities - Integration**

- ▶ Create formatted output for use in other tools; Share model elements with I / T – BPEL or UML

Details to be shown in the product demo...

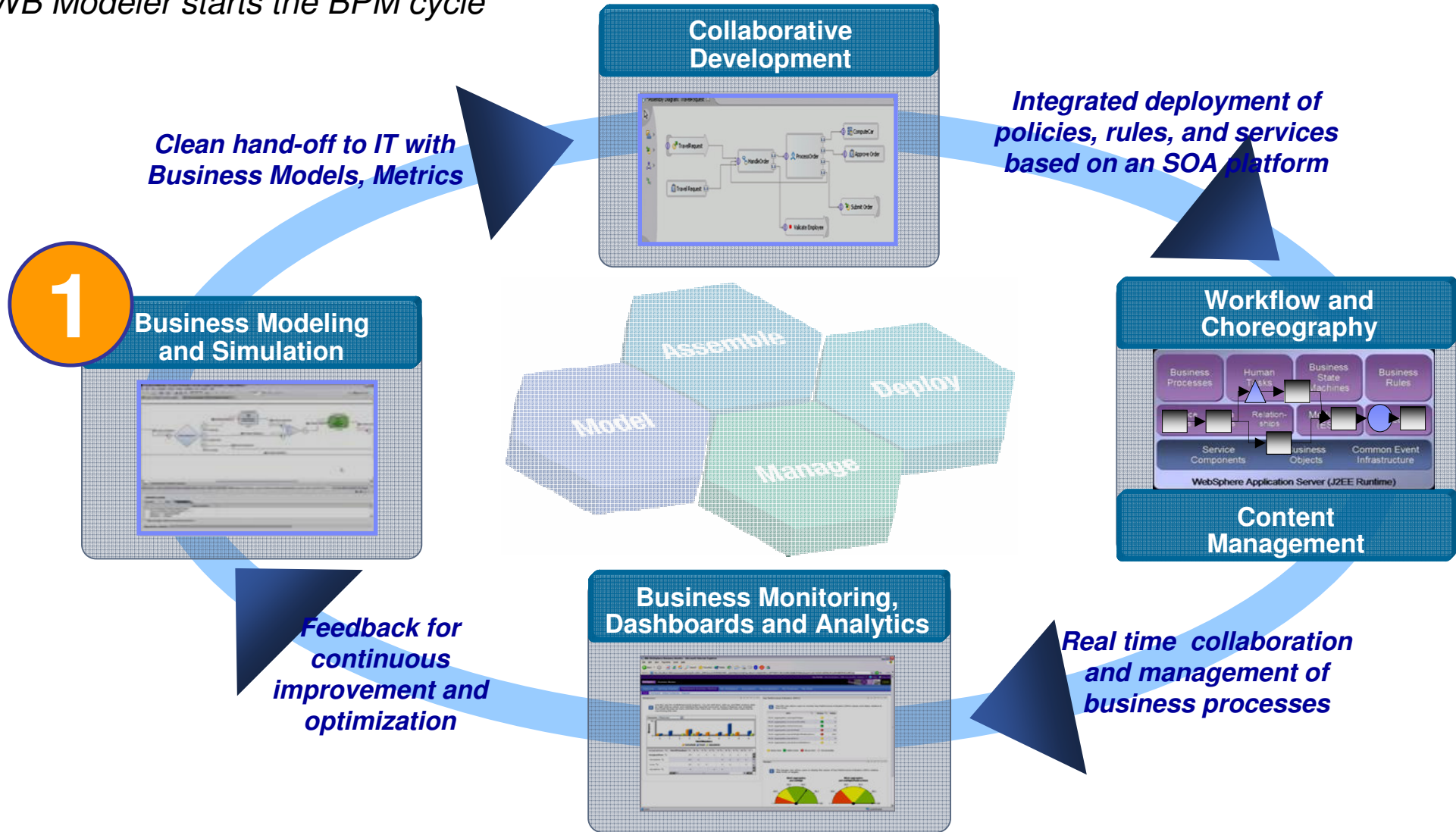
WebSphere Business Modeler – Features Overview

- Easy-to-use - Designed and tested with business analysts
 - Multiple Modes - Business/IT friendly
- Detailed Resource, Process and Data Modeling
- Robust Analysis - Static/Dynamic
- Integration with Crystal Reports
- Powerful Simulation Engine
- Swimlane Editing and Simulation
- Multi-User Support - CVS/ClearCase
- Web Publishing Support
- Business Measures Editor (Metrics, KPIs, Aggregations, etc.)
 - Export Business Measures model to WebSphere Business Monitor
 - Import WebSphere Business Monitor Run-Time Metrics
- Integration
 - Rational Software Architect Support (UML)
 - WebSphere Process Server Support (BPEL)
 - WebSphere Studio Application Developer Integration Edition Support (BPEL)
 - WebSphere MQ Workflow Support

	Simulation Result...	Process Name	Weighted Average Rev...	Weighted Average Allocated Res...	Weighted Average Profit	Total Cost
	As-Is	Account Verification (As-Is) Complete	\$222.00	\$22.990868	\$130.709132	
	To-Be	Account Verification (To-Be)	\$282.00	\$20.125571	\$202.474429	
Difference			(\$60.00)	\$2.865297	(\$71.765297)	\$11.765297
Percentage Change			-27.027%	12.463%	-54.905%	12.888%

Business Process Management enabled by SOA

WB Modeler starts the BPM cycle



Summary and Where to Go

Companies are combining the principles of Business Process Management (BPM) with the flexibility provided by SOA to move their levels of innovation and operational excellence higher. SOA software elements from IBM such as business dashboards, service repositories, tools, and rules engines help accelerate process improvements. And since software alone is not enough, IBM can also provide the expertise to deliver BPM through process knowledge, industry methods and models needed to make SOA-enabled BPM truly valuable.

IBM and IBM partners provide the overall solution to Business Process/Performance Management, founded on SOA.

Jointly, we ensure managers:

- ▶ Can see what is currently happening
- ▶ Can put what's happening into context
- ▶ Can take actions to make changes quickly

www.ibm.com/software/info/bpmsoa/





The end.