

Converting a system from one type to another using the System Planning Tool (SPT)

Use this document to help you convert a system from one type to another using the IBM System Planning Tool.

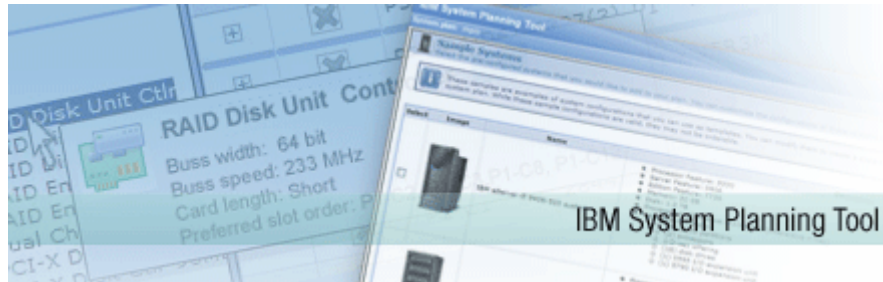


Table of Contents

Introduction.....	3
Overview of the steps.....	3
Before you begin	3
Step 1: Add the new system to the plan.....	4
Step 2: Copy the partitions to the new system.....	5
Step 3: Copy the expansion units to the new system.....	8
Step 4: Make fixes to the new system	9

Introduction

It is possible to use the IBM System Planning Tool to convert a system from one system type to another. Some of the steps in this document take advantage of features of the System Planning Tool that first became available at Version 3.08. 095.

The purpose of this tutorial is to walk you through the steps you have to follow to do this conversion using SPT.

Overview of the steps

This document assumes that you already have a system plan that contains the system that you want to convert. If the system plan was created using the Hardware Management Console (HMC) or Integrated Virtualization Manager (IVM), you first have to convert the system plan to System Planning Tool format. For detailed instructions on how to create a system plan using the HMC or IVM or on how to convert an existing system plan to SPT format, refer to [Converting system plans to System Planning Tool format](#) on the SPT website.

That said, following are the high level steps you will follow as you do this conversion:

1. Add the system that's the target of the conversion to the system plan that contains the system you want to convert.
2. Copy over the partitions from the source system to the target system.
3. Copy over the expansion units.
4. Clean up the target system.

Note: Throughout this document, the term **source system** is used to represent the existing system that you want to convert; the term **target system** is used to represent the new system you want to create.

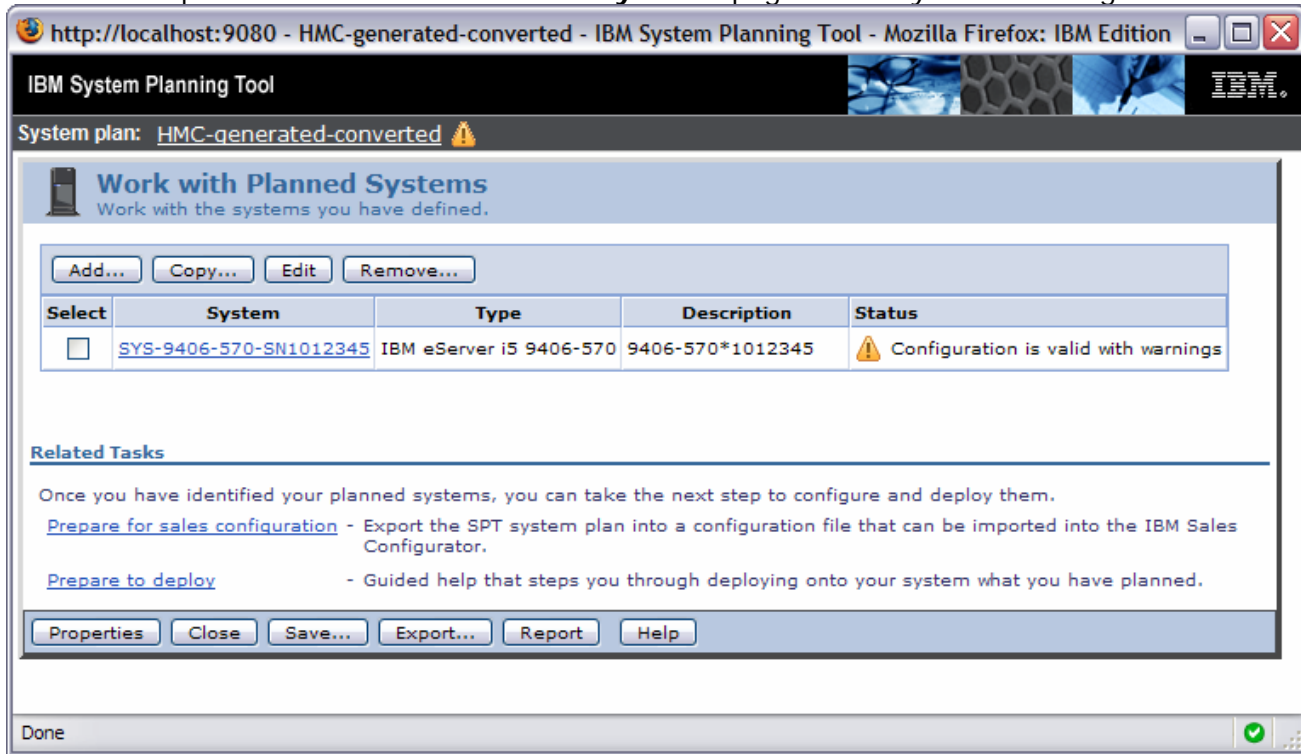
Before you begin

Before you start the conversion, there are a few things you need to do to prepare, as follows:

1. Verify that the operating system versions of the partitions on the source system are supported on the target system. If any OS versions are not supported on the target system, change the OS versions of the partitions on the source system.
2. Look at the partition IDs of the partitions on the source system. Make a note of the greatest partition ID.

Step 1: Add the new system to the plan

Start this step on the **Work with Planned Systems** page in the System Planning Tool:

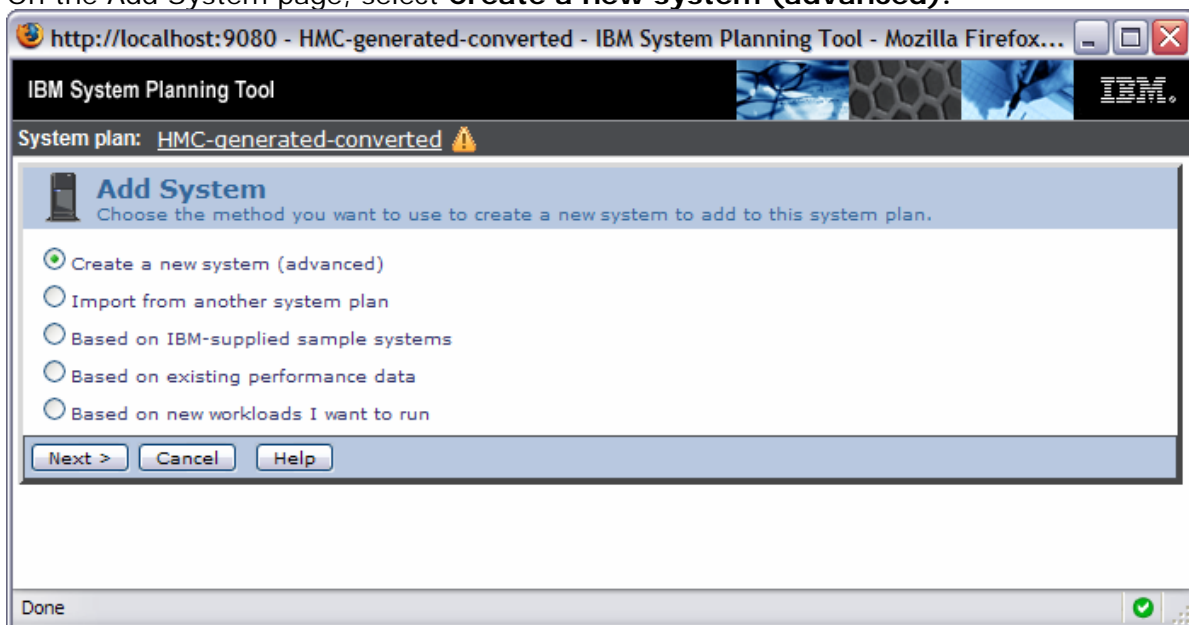


The screenshot shows the IBM System Planning Tool interface. The browser address bar indicates the URL is `http://localhost:9080 - HMC-generated-converted - IBM System Planning Tool - Mozilla Firefox: IBM Edition`. The page title is "IBM System Planning Tool". Below the title, the system plan is identified as "HMC-generated-converted" with a warning icon. The main section is titled "Work with Planned Systems" and includes the subtitle "Work with the systems you have defined." Below this, there are buttons for "Add...", "Copy...", "Edit", and "Remove...". A table lists the planned systems:

Select	System	Type	Description	Status
<input type="checkbox"/>	SYS-9406-570-SN1012345	IBM eServer i5 9406-570	9406-570*1012345	Configuration is valid with warnings

Below the table, there is a "Related Tasks" section with the following text: "Once you have identified your planned systems, you can take the next step to configure and deploy them." Two links are provided: "Prepare for sales configuration" (Export the SPT system plan into a configuration file that can be imported into the IBM Sales Configurator.) and "Prepare to deploy" (Guided help that steps you through deploying onto your system what you have planned.). At the bottom of the main content area, there are buttons for "Properties", "Close", "Save...", "Export...", "Report", and "Help". The status bar at the bottom left shows "Done" and a green checkmark icon on the right.

1. Click **Add...** to add the new system to the plan. This launches the Add System Wizard.
2. On the Add System page, select **Create a new system (advanced)**.



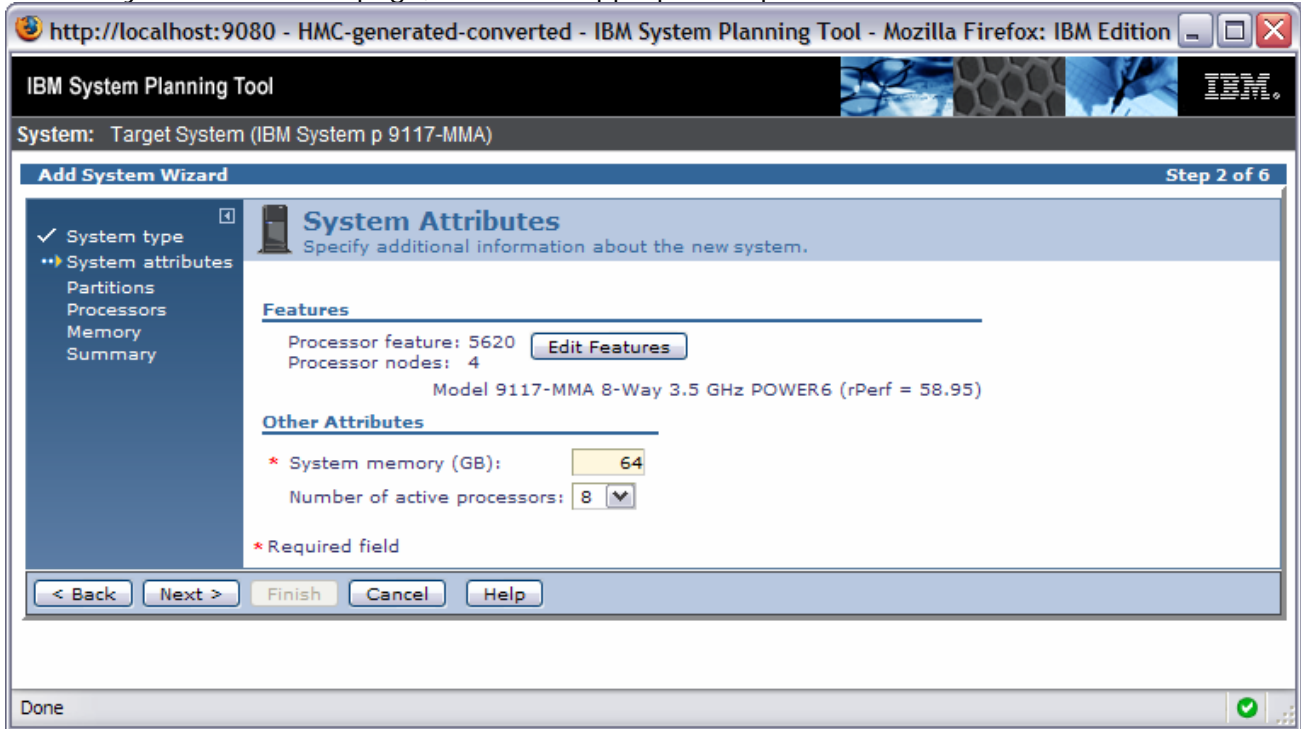
The screenshot shows the "Add System" wizard in the IBM System Planning Tool. The browser address bar is the same as in the previous screenshot. The page title is "IBM System Planning Tool". Below the title, the system plan is identified as "HMC-generated-converted" with a warning icon. The main section is titled "Add System" and includes the subtitle "Choose the method you want to use to create a new system to add to this system plan." Below this, there are five radio button options:

- Create a new system (advanced)
- Import from another system plan
- Based on IBM-supplied sample systems
- Based on existing performance data
- Based on new workloads I want to run

At the bottom of the main content area, there are buttons for "Next >", "Cancel", and "Help". The status bar at the bottom left shows "Done" and a green checkmark icon on the right.

3. On the System Type page, type the name of the target system and select the platform. Then, select the machine-type model.

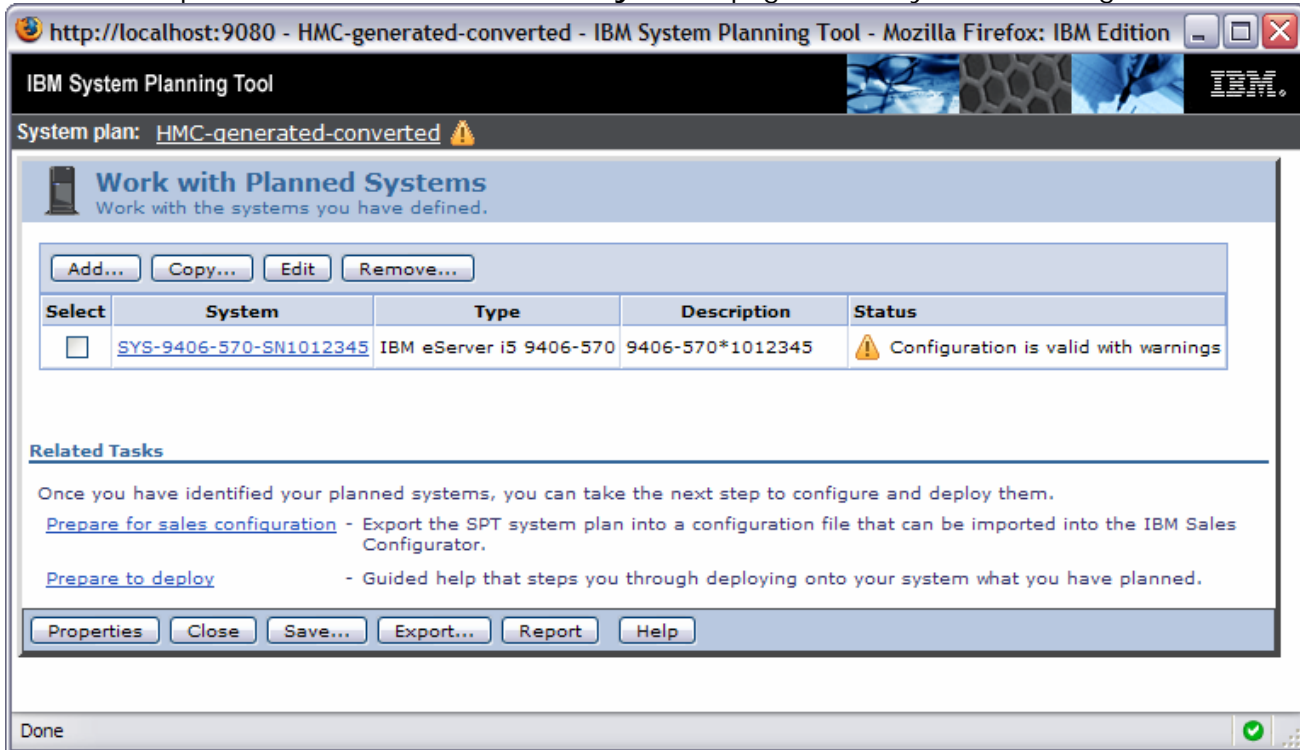
- On the System Attributes page, select the appropriate options.



- Finish the wizard and accept all defaults.

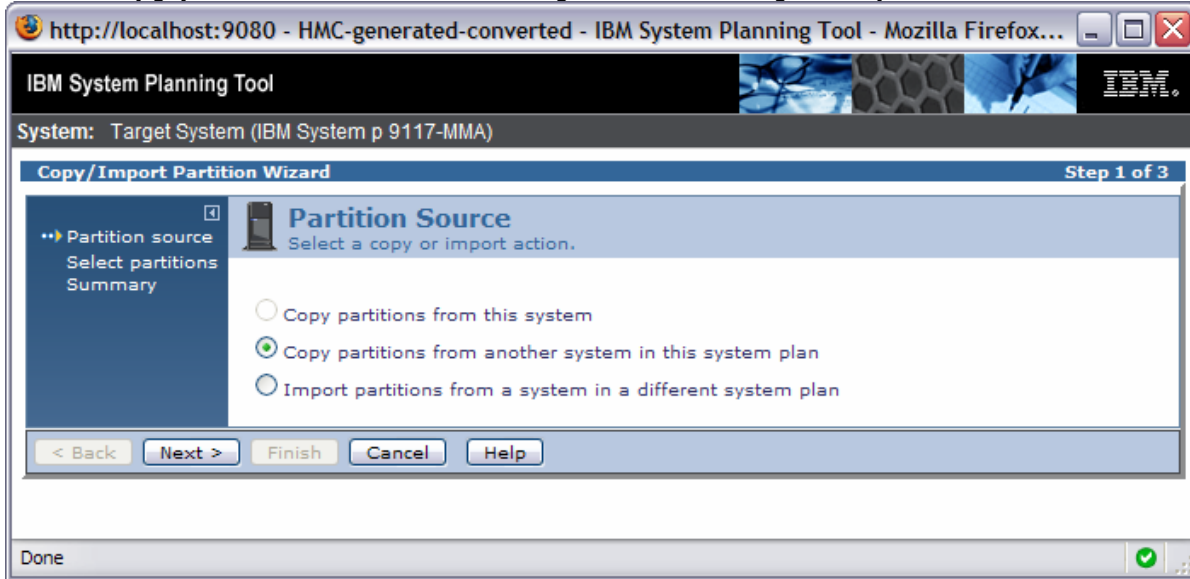
Step 2: Copy the partitions to the new system

Start this step on the **Work with Planned Systems** page in the System Planning Tool:

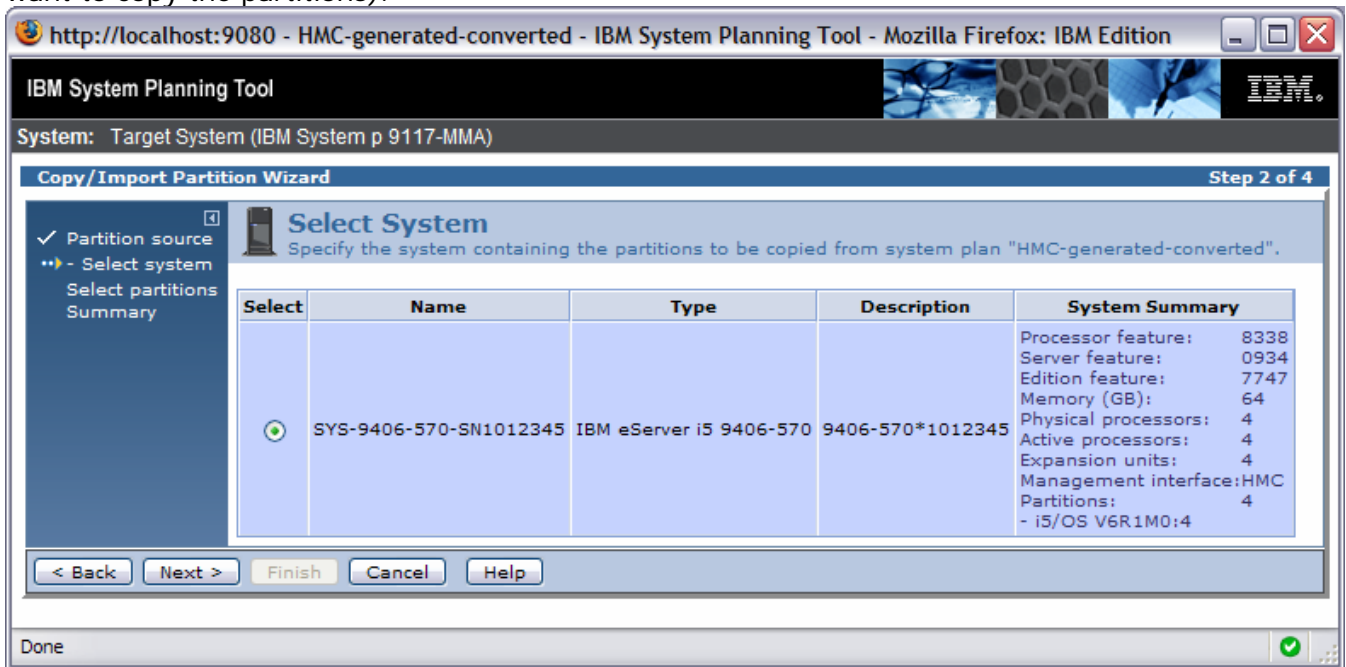


- Select the target system and click **Edit**.
- On the Partitions tab, change the existing partition's ID to a value that is greater than the greatest partition ID of the source system. (This prevents the source system's partitions from being renumbered in the next step.)
- Click **Apply**.

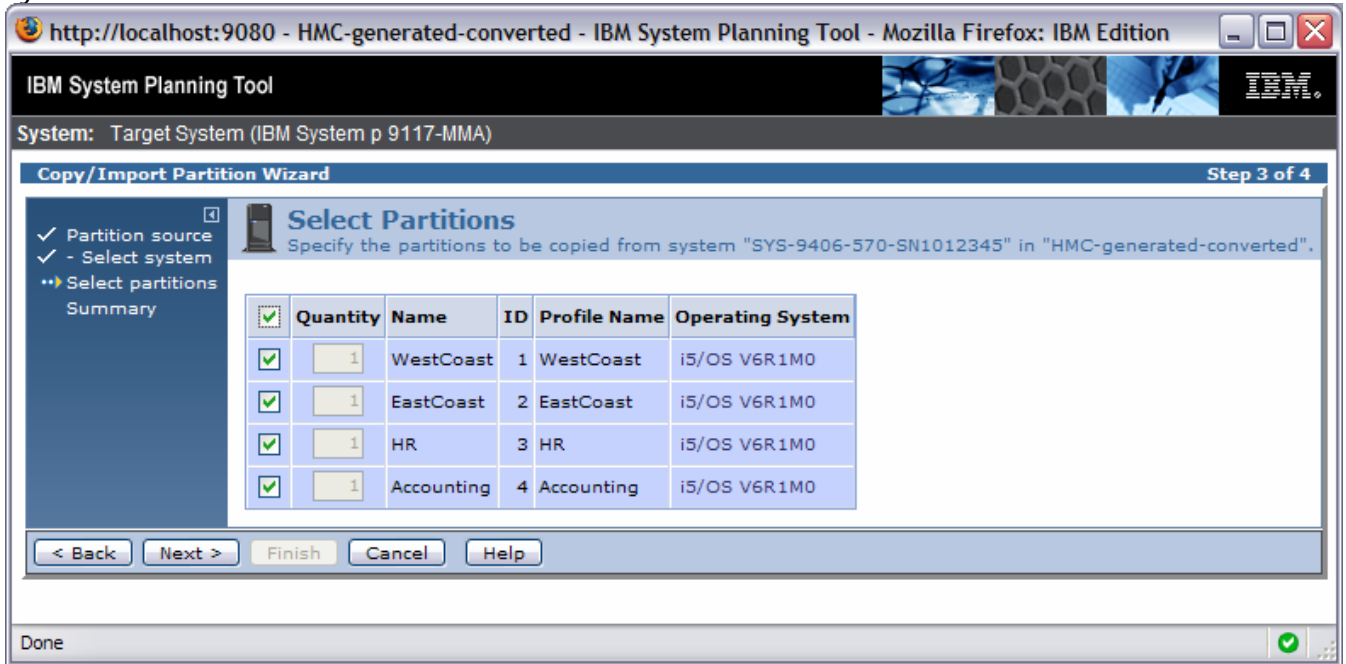
4. Click **Copy/Import Partitions...** This launches the Copy Partition Wizard, which guides you through the process of copying the partitions from the source system to the target system.
5. Select **Copy partitions from another system in this system plan** on the Partition Source page:



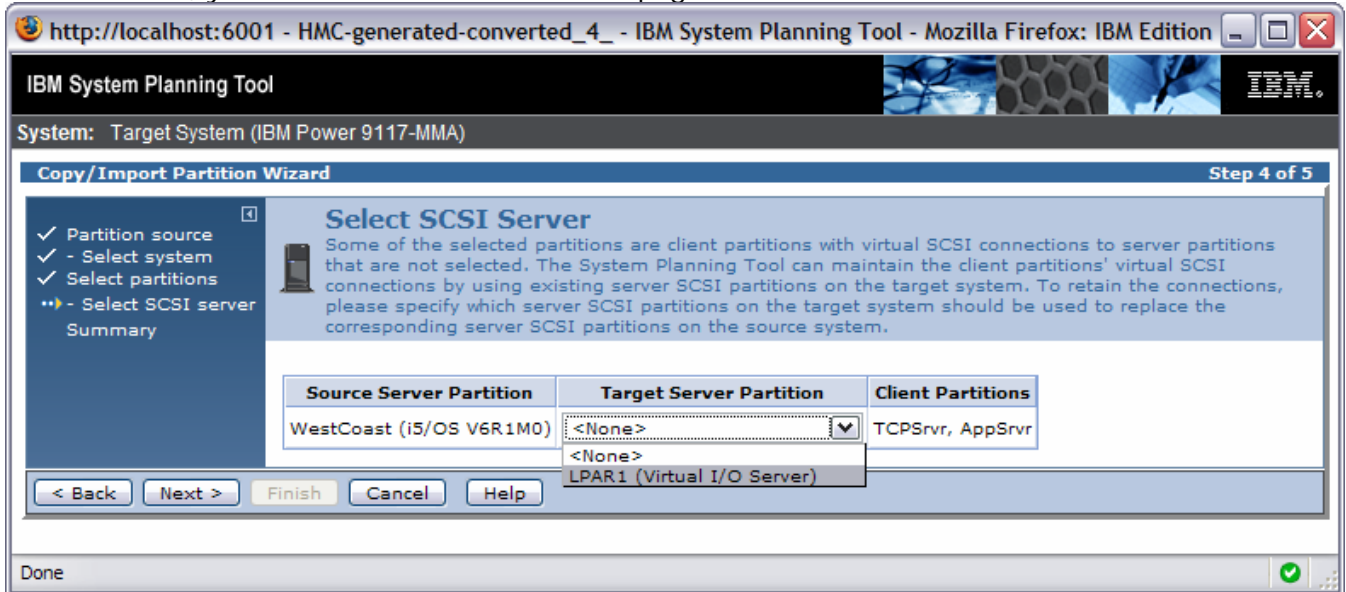
6. Click **Next**. On the Select System page, select the source system (the system from which you want to copy the partitions):



- Click **Next**. On the Select Partitions page, select the partitions you want to copy to the new system:

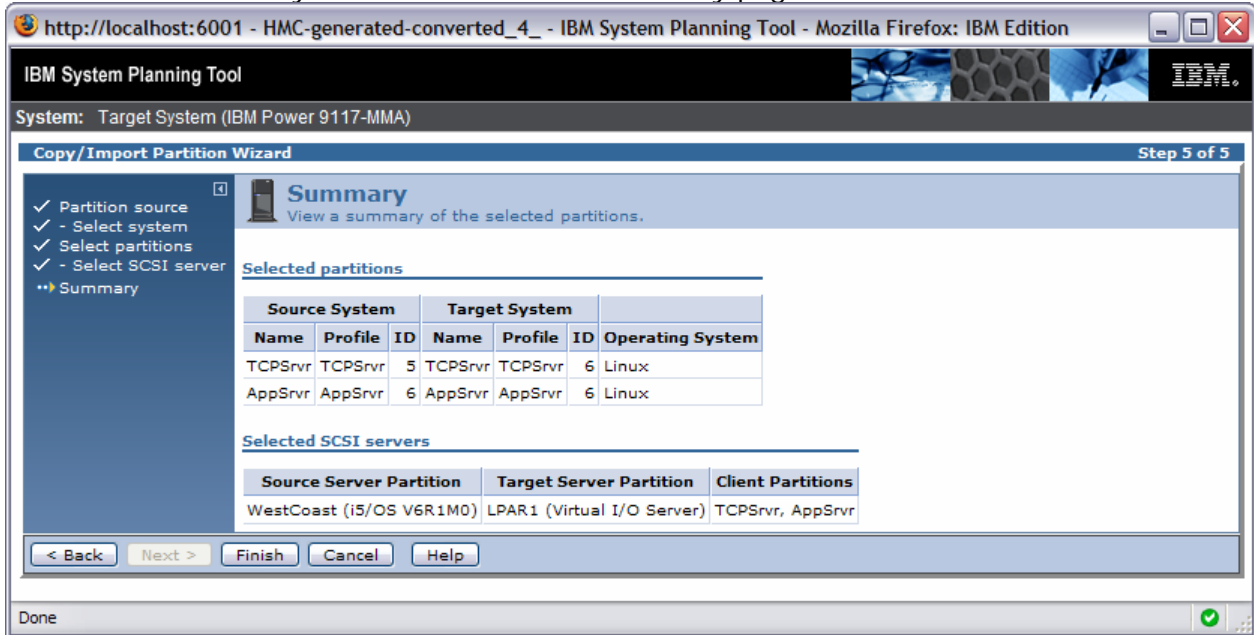


- Click **Next**. If any of the partitions you select have client SCSI connections to a partition on the source server, you see the Select SCSI Server page:



This page enables you to re-map any client SCSI connections to a SCSI server partition on the target system. To do that, select the partition you want to use as the SCSI server on the target system.

9. Click **Next**. Confirm your selections on the Summary page:



10. Click **Finish** to copy the partitions from the source server to the destination server.

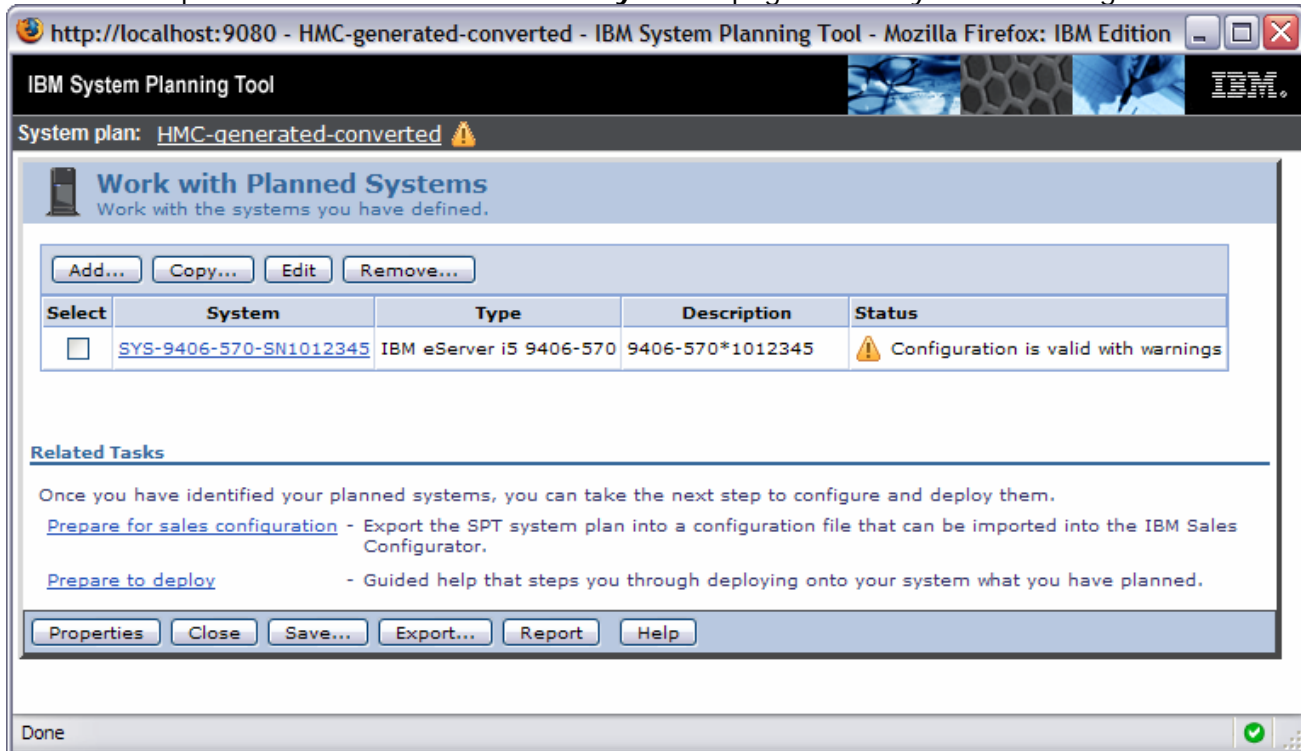
11. When you finish the Copy Partition Wizard, remove the original default partition that was added to the target system. (This is the partition whose ID you changed in Step 1.) Do this by selecting the partition on the Partitions page and clicking **Remove...**

When you are finished, you are returned to the Work with Planned Systems page. Your system plan now includes the original source system as well as the new target system that you just created.

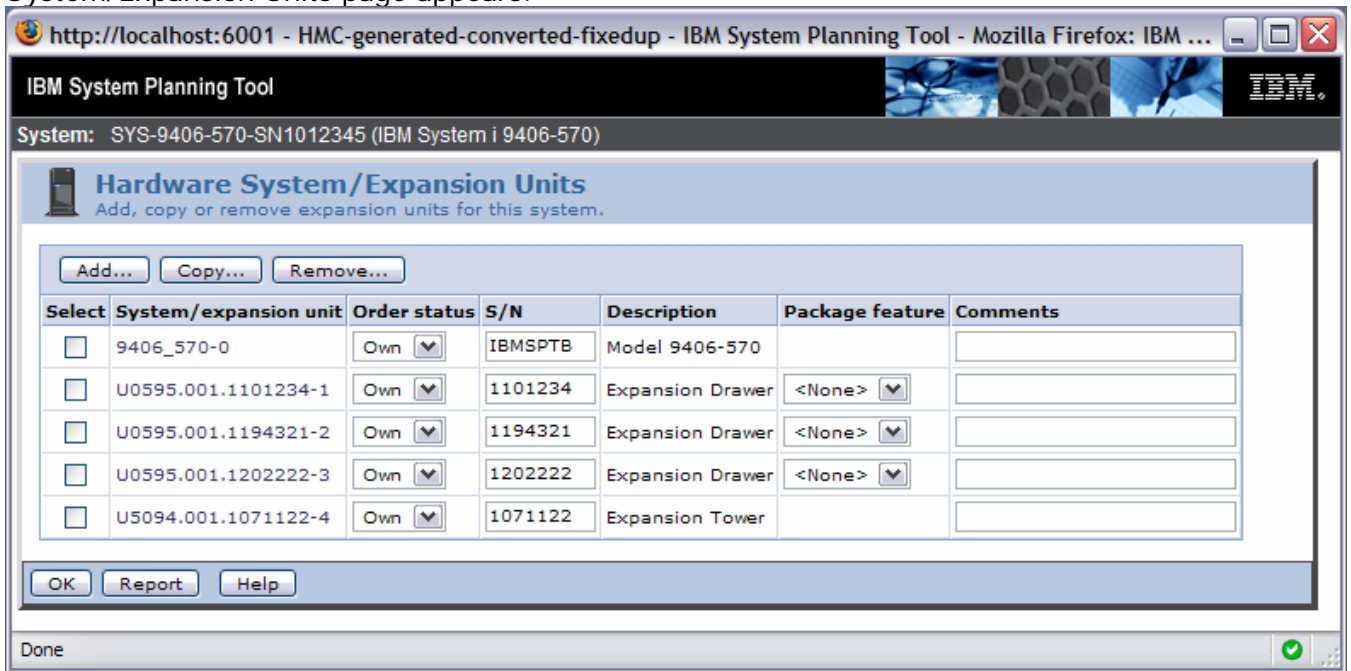
Step 3: Copy the expansion units to the new system

Perform this step for each expansion unit that you want to copy to the new system. You can only copy expansion units one-at-a-time.

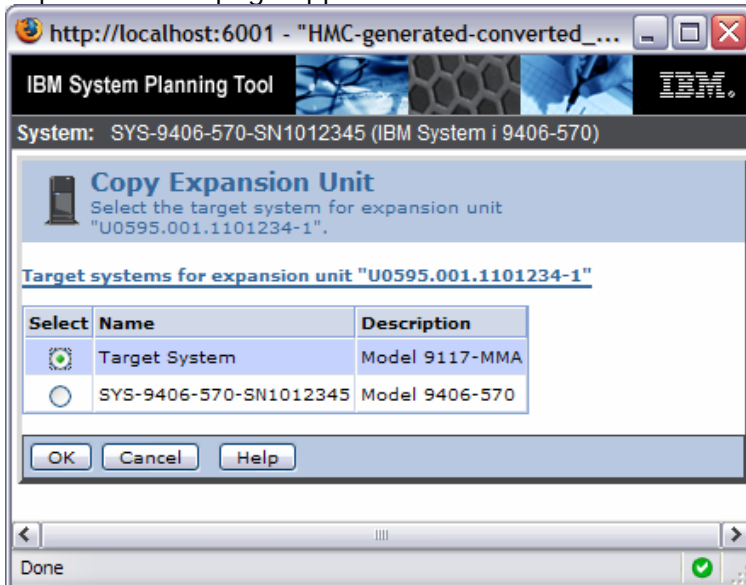
Start this step on the **Work with Planned Systems** page in the System Planning Tool:



1. Select the source system and click **Edit**. Go to the Hardware tab.
2. Select **Work with system/expansion units** from the Actions menu. The Hardware System/Expansion Units page appears.



3. Select an expansion unit that you want to copy to the target system and click **Copy...** The Copy Expansion Unit page appears:



4. Select the target system and click **OK**. Some notes:
 - a. You may see error messages at this point because the expansion units are not supported on the target system or because one or more expansion units contain parts that are not supported on the target system. To copy the expansion units, you must first remove the unsupported units or parts from the expansion unit in the source system.
 - b. Some expansion units cannot be copied at all, including the initial expansion units of the 595 and FHA models, 5787, 5786, 5795, 5886, 7031-D24, and 7031-T24.
5. Click **OK** on the Hardware tab to return to the Work with Planned Systems page.

Repeat these steps for each expansion unit you want to copy.

Step 4: Make fixes to the new system

Start this step on the **Work with Planned Systems** page in the System Planning Tool.

1. Select the new target system and click **Edit**. Select the Hardware tab.
2. Recreate any expansion units that could not be copied from the source system.
3. If you want to reuse parts from the expansion units on the source system that are not supported on the target system, then add them to the target system at this time.
4. Remove or replace any parts that are not supported on the target system. You will see validation messages at the bottom of the Hardware tab to let you know what parts are not supported. For example, on a 9117-MMA you'll have to replace any 2843s with 3705s, and replace any 2849 LAN IOAs with 3709s.