



WebSphere Cast Iron Cloud integration

Integrate in days

Highlights

- Speeds up time to implementation for Cloud and on premise integration projects with “configuration, not coding” approach
 - Offers cost savings with low monthly subscription rate and up to 80 percent lower maintenance costs than software-based options
 - Features prebuilt connectors and prepackaged integration processes to simplify and broaden integration capabilities
 - Eases monitoring and management with anytime, anywhere monitoring and complete remote management and administration
 - Streamlines development without the need for specialized middleware skills (standards-based)
-

To cut costs, drive productivity, and provide new capabilities quickly, companies are turning to cloud applications to meet their business needs. As organizations invest in an increasing number of cloud applications across departments, they now have a hybrid world of cloud and on premise applications. They view application integration as the critical component to harmonize business processes across their hybrid application landscape and maximize the economic value of their investment.

However, these same organizations seeking to address their hybrid world integration needs through the traditional options, such as custom code or pure-play on-demand products have found these choices unappealing. Writing custom code is time consuming, requiring a great deal of software, maintenance and deep middleware expertise. And pure-play on-demand options lack the sophisticated functionality and capabilities to connect the SaaS and enterprise world. Does this sound familiar?

WebSphere® Cast Iron Cloud integration simplifies data migration and application integration by providing everything needed to complete such projects using a “configuration, not coding” approach that doesn’t require the need for expert programmers or middleware specialization. Companies choose WebSphere Cast Iron Cloud integration to integrate their applications in days and for up to 80 percent less than the cost of other traditional alternatives.



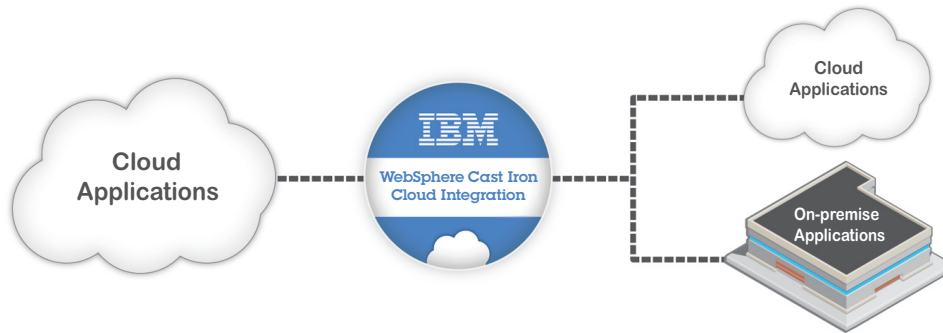


Figure 1: Integrate cloud and on premise applications in days with WebSphere Cast Iron Cloud integration.

Connect cloud and on premise applications—easily

Most Cloud and on premise application integration projects require rapid migration and integration of information across multiple systems—such as ERP, CRM, databases, on-demand applications and custom applications—and also with partners. WebSphere Cast Iron Cloud integration provides comprehensive connectivity to all these applications without the need to install anything at the endpoints.

Accelerate integration projects

WebSphere Cast Iron Cloud integration provides everything needed to integrate cloud and on premise applications. It contains the following key features to simplify and accelerate data migration and application integration:



Figure 3: Migration and data quality

- **Data profiling:** Assess the quality of the data before migrating it
- **Data cleansing:**
 - Duplicate removal (i.e., deduplication): Combine data from various different sources and remove duplicate values
 - Fuzzy lookup: Configure sophisticated rules to highlight and correct errors
- **Data enrichment:** Perform lookups with third-party providers to enrich the data



Figure 2: Integration project life cycle



Figure 4: Integration and extraction

- **Connectivity:** Configurable connectivity between hundreds of applications and end-points
- **Transformation:** Drag-and-drop user interface for data transformations
- **Workflow:** Visual interface for designing workflow rules
- **Management:** Easy manageability using a single, web-based console

Accelerate projects with Template Integration Processes

With thousands of successful customer integrations, WebSphere Cast Iron Cloud integration uses a wealth of integration experience to provide a comprehensive set of template integration processes (TIPs). These TIPs are offered for the most common integration scenarios between a number of Cloud and on premise enterprise applications such as Oracle, salesforce.com and SAP, eliminating the need to build integrations from scratch.

Simply log in via a web browser, select the template that best meets the requirements and enjoy proven, supported and certified processes. The TIPs can also be further customized to meet specific needs using a straightforward configuration wizard.

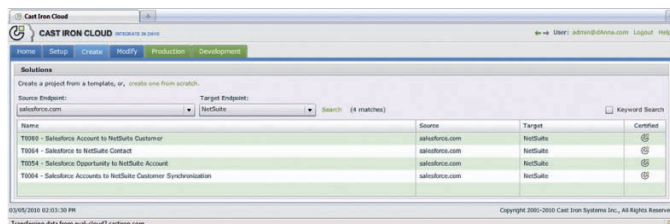


Figure 5: Screen capture of the configuration wizard

What projects does WebSphere Cast Iron Cloud integration solution address?

WebSphere Cast Iron Cloud integration rapidly connects a wide variety of applications and endpoints while complementing existing integration technologies. Companies in industries ranging from manufacturing, retail and consumer packaged goods, to energy, transportation and logistics, use these products to address application integration projects such as:

Integration projects addressed

- Data migration from legacy to new applications
- Complete view of customer and product across ERP, CRM and call center applications
- Opportunity-to-order integration between marketing automation, CRM and ERP systems
- Order to cash integration between CRM, ERP, warehousing and financial systems
- Billings, bookings and backlog visibility from ERP to CRM
- Pricing and product catalog information between ERP and customer portals
- POs, shipping notices and payments with suppliers
- Customer support integration between ERP and customer support systems
- Repair and warranty information between call centers and customer portals
- Data extraction from ERP/CRM to reporting and business integration systems
- Mergers, acquisitions and divestitures integration
- Enabling service oriented architectures

Systems connected

- ERP including SAP, Oracle, JD Edwards, PeopleSoft, BAAN, QAD, Lawson and Great Plains
- CRM including Siebel, Clarify, Remedy, Oracle, Kana and Vantive
- All major SaaS/Cloud applications including salesforce.com, RightNow, NetSuite and Oracle CRM On Demand
- All major databases including Oracle, DB2®, SQL Server, MySQL, Sybase and Informix
- Flat files using FTP, HTTP(S), email
- XML and Web Services
- EDI
- Middleware and all major EAI platforms
- Project management applications including clarity
- And many more

“Now that we’ve adopted WebSphere Cast Iron Cloud integration at the enterprise level, its simplicity and speed give us the time and resources to focus on strategic IT initiatives and deliver increased value to all of our divisions.”

—Tanner Shamrock, IT project manager, Siemens Energy

Why choose WebSphere Cast Iron Cloud integration solution?

WebSphere Cast Iron Cloud integration enables IT departments to respond quickly to the needs of the business:

- **Fastest time to market**
 - Graphical configuration, not coding
 - On demand library of prebuilt Template Integration Processes (TIPs) for the most common integration scenarios between cloud and on premise applications

- **Lowest costs**
 - Low monthly subscription pricing
 - Up to 80 percent lower maintenance costs versus traditional software-based alternatives
 - No need to maintain multiple components including hardware, web servers, databases and integration brokers
- **Simplest monitoring and management**
 - Complete remote management and administration
 - Proactive alerting of data and connectivity errors
 - Monitor from anywhere, anytime
- **Most rapid, efficient development**
 - Unmatched flexibility: can be deployed via an on-premise integration appliance or the integration-as-a-service WebSphere Cast Iron Live
 - Completely standards-based; no reliance on specialized middleware skills
 - Prebuilt connectors for SaaS applications, CRM, ERP, customer support systems, all major databases, flat files, Web Services, messaging systems and more

WebSphere Cast Iron Cloud integration deployment options

WebSphere Cast Iron Cloud integration offers a variety of deployment options—WebSphere Cast Iron Live and an on-premise, physical WebSphere DataPower® Cast Iron Appliance XH40 or virtual WebSphere Cast Iron Hypervisor Edition. The flexibility of these options provides a seamless transition between on-premise and cloud environments as a company’s application landscape changes to “future-proof” technology investments. While these options share the same technology foundation, each is designed to meet specific customer needs.

“Integration challenges are often a barrier to widespread adoption of cloud computing services including SaaS. Users of cloud-based services need a portfolio of viable integration options to flexibly link cloud-based functionality with on-premise applications and data.”

—Benoit Lheureux, research vice president, application development, integration and web technologies, Gartner

WebSphere Cast Iron Live

WebSphere Cast Iron Live is the integration-as-a-service solution. Using a “develop once, deploy anywhere” approach, WebSphere Cast Iron Live is ideal for companies with a majority of their applications based in the cloud and with no infrastructure on premise.

WebSphere Cast Iron Appliances

The WebSphere Cast Iron physical appliance is the on-premise integration solution. Useful for customers with a majority of applications based on-premise who need a standards-based solution and find software-based integration solutions too complex. It is also available as a virtual appliance that can be installed on a company’s own hardware.

Functional specifications

- Low monthly subscription pricing
- 24x7 production support
- No restrictions on number of users
- Powerful data migration and data quality features
- Rapid integration with template integration processes and self-guided wizards
- Out-of-the-box connectivity to hundreds of enterprise and custom applications
- Optimized for high throughput projects
- Graphical data transformation
- Rules-based workflow
- “Lights-out” management and error notification
- Out-of-the-box data and connectivity error processing
- Guaranteed delivery of transactions
- Web-based monitoring of integrations
- Secure management and data communication
- Bi-directional real-time and batch integration

WebSphere Cast Iron Cloud integration addresses a broad range of integration projects. Whether it’s a simple point-to-point application connectivity problem, complex orchestration across multiple applications or a mission-critical process requiring high availability, Cast Iron integration is the simplest, most complete solution to implement.

WebSphere Cast Iron Cloud integration revolutionizes application integration by delivering simplicity to customers. In the complex world of application integration, companies find Cast Iron integration to be the simplest way to complete their integrations in days—and for up to 80 percent less cost than software-based alternatives.

For more information

To learn more about WebSphere Cast Iron Cloud integration, please contact your IBM marketing representative or IBM Business Partner, or visit the following website:

<http://www.ibm.com/software/integration/cast-iron-cloud-integration/>

Additionally, financing solutions from IBM Global Financing can enable effective cash management, protection from technology obsolescence, improved total cost of ownership and return on investment. Also, our Global Asset Recovery Services help address environmental concerns with new, more energy-efficient solutions. For more information on IBM Global Financing, visit: ibm.com/financing



© Copyright IBM Corporation 2011

IBM Corporation
Software Group
Route 100
Somers, NY 10589 U.S.A.

Produced in the United States of America
January 2011
All Rights Reserved

IBM, the IBM logo, ibm.com, DataPower and WebSphere are trademarks or registered trademarks of International Business Machines Corporation in the United States, other countries, or both. If these and other IBM trademarked terms are marked on their first occurrence in this information with a trademark symbol (® or ™), these symbols indicate U.S. registered or common law trademarks owned by IBM at the time this information was published. Such trademarks may also be registered or common law trademarks in other countries. A current list of IBM trademarks is available on the web at "Copyright and trademark information" at ibm.com/legal/copytrade.shtml

Cast Iron Systems is a trademark of Cast Iron Systems, Inc. (or its affiliates), an IBM Company.

Other product, company or service names may be trademarks or service marks of others.



Please Recycle
