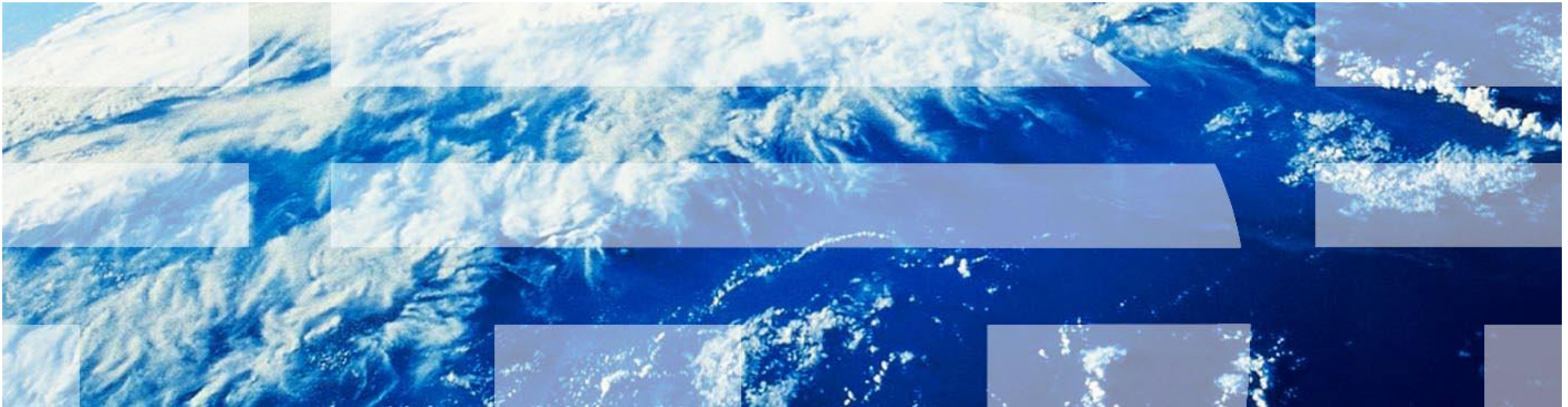


# Module 2 – Responding to a change request



# Agenda

Introduction to Collaborative Lifecycle Management

Lab Overview

Module 1: Aligning plans

**Module 2: Responding to a change request**

Module 3: Planning the sprint

Module 4: Completing a story

Module 5: Testing and fixing a story

Module 6: Stabilizing the sprint

Session Summary

## Objectives

Further explore the IBM Rational Requirements Composer (RRC) Web interface.

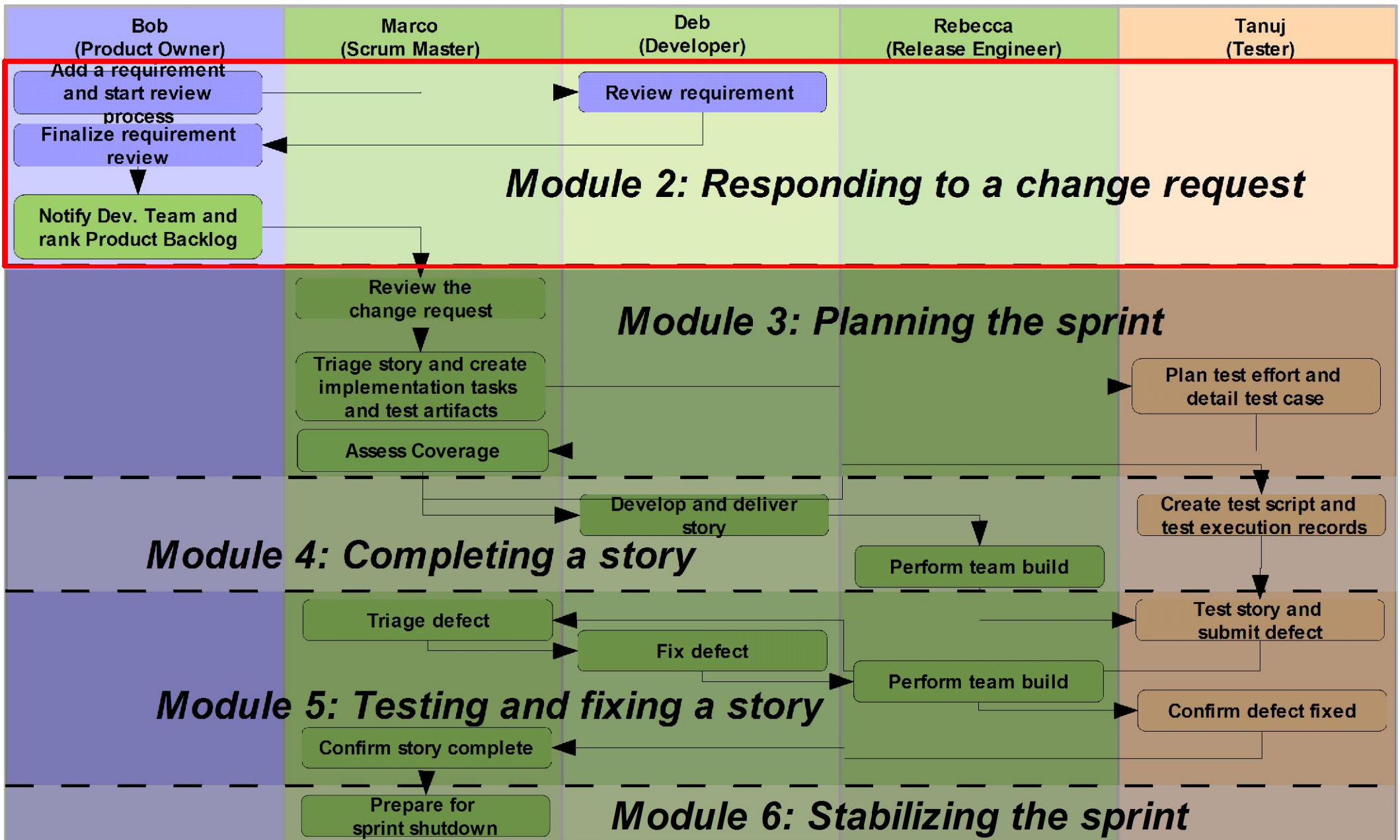
Explore the integration between IBM Rational Requirements Composer and IBM Rational Team Concert (RTC) that enables creating and linking to new or existing RTC work items from RRC requirements that help ensure and track story to development work item coverage.

Explore how IBM Rational Requirements Composer directly supports requirements review and approval process.

Explore the Rational Team Concert Web interface from an product owner's point of view.

Explore how Rational Team Concert can manage SCRUM story and product work item backlogs.

# Lab Sequence of Events



## Lab 2 Scenario

We will play two different roles in this lab!

As Bob, the product owner, we will take into account a new stakeholder change request and make sure appropriate requirement artifacts in IBM Rational Requirements Composer for this new story and then start the review process.

As Deb, a developer, we will review the new requirement, and approve it using IBM Rational Requirements Composer Web interface.

As Bob, the product owner again, we will prioritize the current sprint's story work item backlog in IBM Rational Team Concert to ensure that the new story is considered for the coming sprint, and notify the development team about that change request so they can analyze the impact.

## Lab 2 Concepts Learned

IBM Rational Requirements Composer (RRC) can be used to define and describe various requirement artifacts utilizing a variety of techniques and resource types including rich text (note cards), user interface sketches, storyboards, and flows.

All RRC resource types can have attributes, be tagged, and linked to each other to create a broader “web of linked context” to facilitate better definition and understanding of what is required from development and test .

IBM Rational Requirements Composer (RRC) directly supports requirements review and approval process.

IBM Rational Team Concert provides direct support for Scrum. (Note: While this session uses Scrum, IBM Rational Team Concert provides excellent support for a variety of development methodologies.)

Requirements artifacts defined in IBM Rational Requirements Composer can be linked to new or existing development stories and work items in IBM Rational Team Concert (RTC).



# Questions

