

# IBM SECURITY DAY 2011

Innovare con sicurezza per aprire al futuro



Kent Blossom,  
VP, IBM Security Solutions



Advanced Cyber Defense – the IBM Perspective

## Smarter Planet - Interconnected, Instrumented, Intelligent

Globalization and Globally Available Resources

Billions of mobile devices accessing the Web

Access to streams of information in Real Time



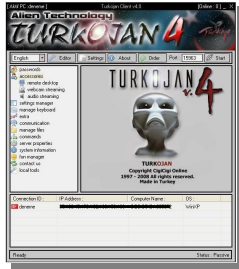
**New possibilities.  
New complexities.  
New risks.**

New Forms of Collaboration





**Protects Against:**  
Outsider Threats



**Addresses:**  
People



**Technology  
Architected to:**

Be Modular

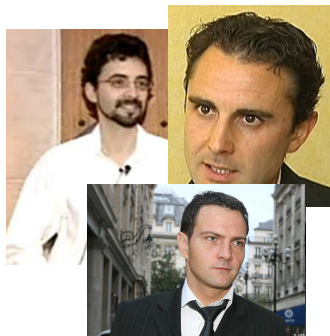


**Utilizes Advanced  
Analytics:**

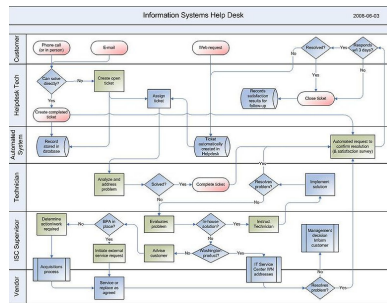
Enterprise-wide  
Situational Awareness



**Insider Threats**



**Process**



**Scalable**



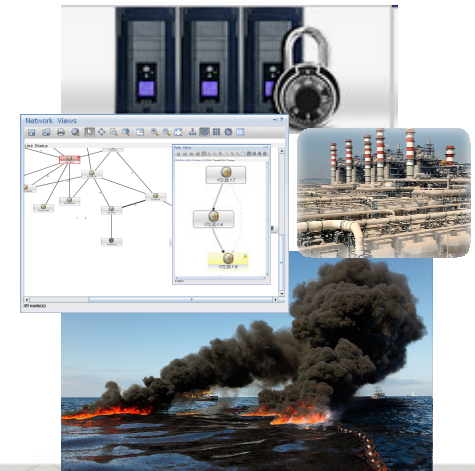
**Man Made &  
Natural Disasters**



**Technology**



**Support Industry  
Standards**



**Multiple Data Feeds**

# Dynamic Cyber Defense: Basic Building Blocks



## Security / Compliance Analytics & Reporting

**Governance, Risk and Compliance Management**

**COP\* / Situational Awareness / Compliance Reporting**

## IT Infrastructure - Operational Domains

Application Security

Data Security

Network Security

Endpoint Security

Identity & Access Security

## Key Foundational Security Elements

**Maintaining a Trusted Infrastructure**

## Foundational Capabilities

**Discover & Categorize Information Assets**

**Establish & Manage Enterprise & Federated Identities**

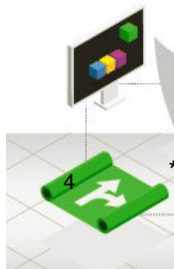
**Manage Access:**  
• Counter Insider Threats  
• Manage Privileged IDs

**Cyber Defense:**  
• Apps  
• Network  
• Servers  
• Endpoints

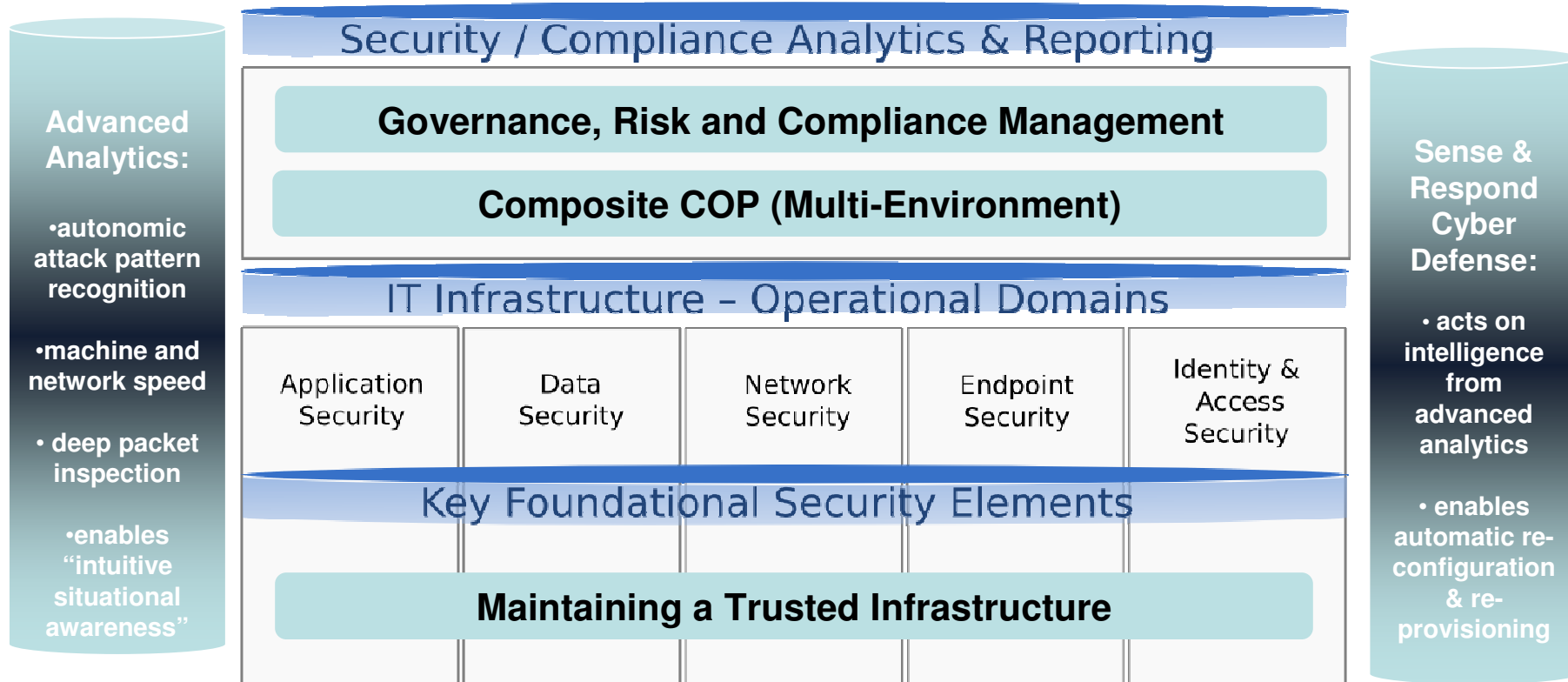
**Provide Physical Security**

**Ensure Compliance with Policy**

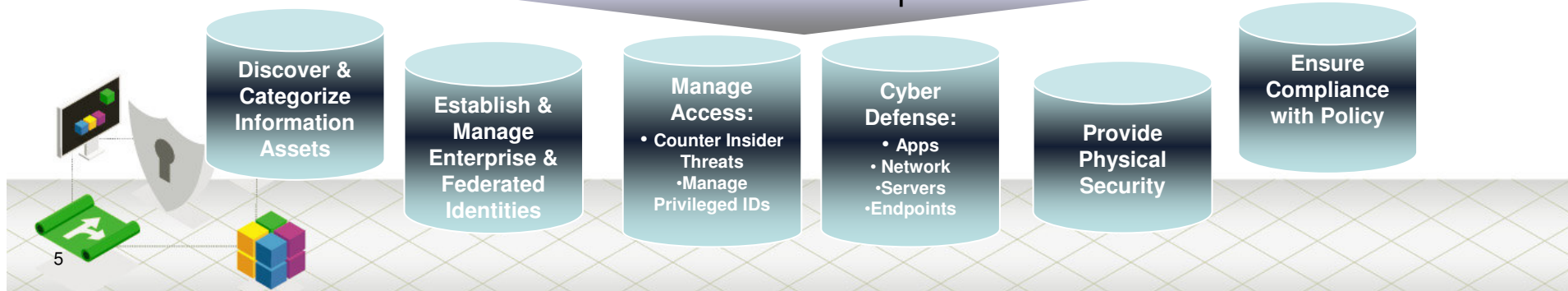
\* Common Operational Picture



# Dynamic Cyber Defense: Advanced Analytics & Service Automation



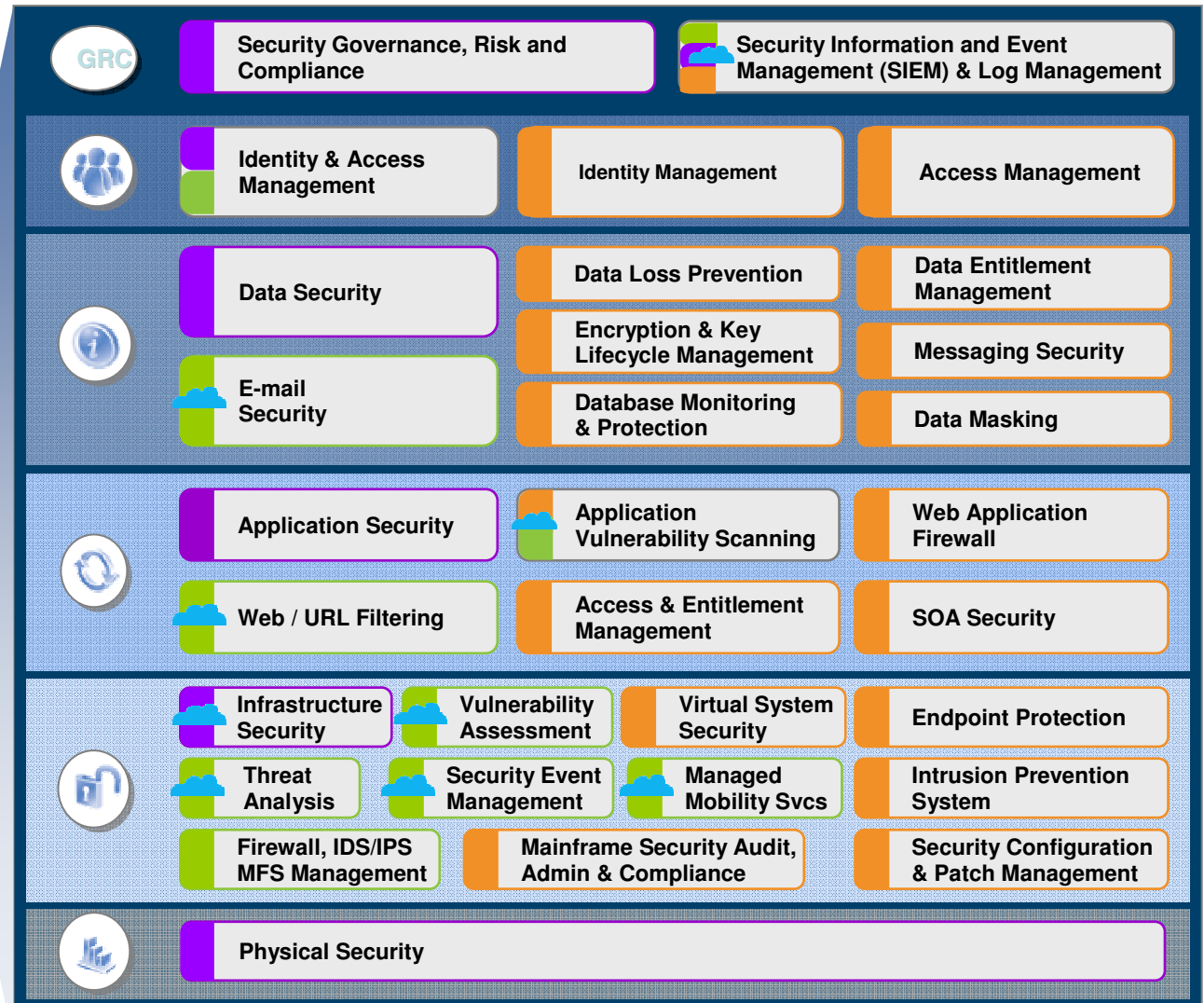
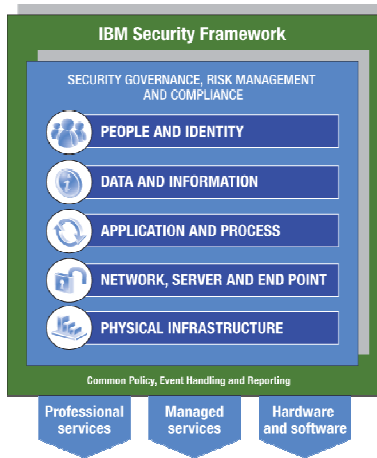
## Foundational Capabilities



# IBM strategy: Be comprehensive, leverage partners



- Professional Services
- Managed Services
- Products
- ☁ Cloud Delivered



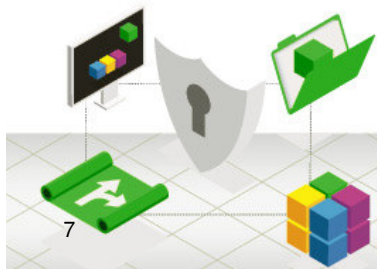


# IBM SECURITY DAY 2011

Innovare con sicurezza per aprire al futuro

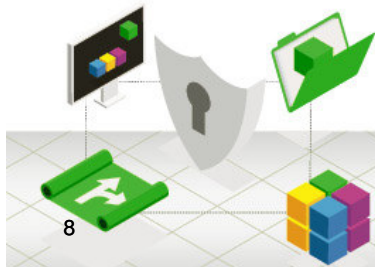


Thank  
YOU



## IBM Security Solutions

<u>Function / Capability</u>	<u>Candidate IBM Solutions</u>
1. Establish the Cloud infrastructure:	<ul style="list-style-type: none"> <li>• IBM Cloud Architecture / Design Services</li> <li>• IBM Tivoli Service Automation Manager</li> <li>• IBM Tivoli Monitoring</li> <li>• IBM Service Delivery Manager</li> </ul>
2. Establish and Enforce Security Policy & Governance Structure	<ul style="list-style-type: none"> <li>• IBM Professional Security Services</li> <li>• IBM Tivoli Security Policy Manager</li> <li>• IBM Websphere Datapower SOA Appliance</li> <li>• IBM Tivoli Security Incident &amp; Event Manager</li> <li>• IBM InfoSphere Guardium</li> <li>• IBM OpenPages</li> </ul>
3. Discover & Categorize Information Assets	<ul style="list-style-type: none"> <li>• IBM InfoSphere Optim</li> <li>• IBM InfoSphere Guardium</li> </ul>
4. Establish & Manage Identities and Access	<ul style="list-style-type: none"> <li>• IBM Tivoli Identity Manager</li> <li>• IBM Tivoli Access Manager</li> <li>• IBM Tivoli Federated Identity Manager</li> <li>• IBM Tivoli Security Incident &amp; Event Manager</li> <li>• IBM Privileged Identity Management</li> </ul>





## IBM Security Solutions

<u>Function / Capability</u>	<u>Candidate IBM Solutions</u>
5. Manage Information Access	<ul style="list-style-type: none"> <li>• IBM InfoSphere Guardium</li> </ul>
6. Cyber Defense	<ul style="list-style-type: none"> <li>• IBM Managed Security Services</li> <li>• IBM X-Force Threat Analysis Service (XFTAS)</li> <li>• IBM AppScan</li> <li>• IBM Proventia Threat Mitigation Products</li> <li>• IBM Tivoli Endpoint Manager (BigFix)</li> <li>• IBM Security Virtual Server Protection</li> </ul>
7. Physical Security	<ul style="list-style-type: none"> <li>• IBM Physical Security Services – Digital Video Surveillance</li> </ul>
8. COP / Situational Awareness / Compliance Reporting	<ul style="list-style-type: none"> <li>• IBM Tivoli Security Incident &amp; Event Manager</li> <li>• IBM InfoSphere Guardium</li> <li>• IBM Tivoli Monitoring</li> <li>• IBM Proventia Management SiteProtector</li> <li>• IBM Tivoli Netcool OMNibus</li> <li>• IBM Cognos</li> </ul>

