

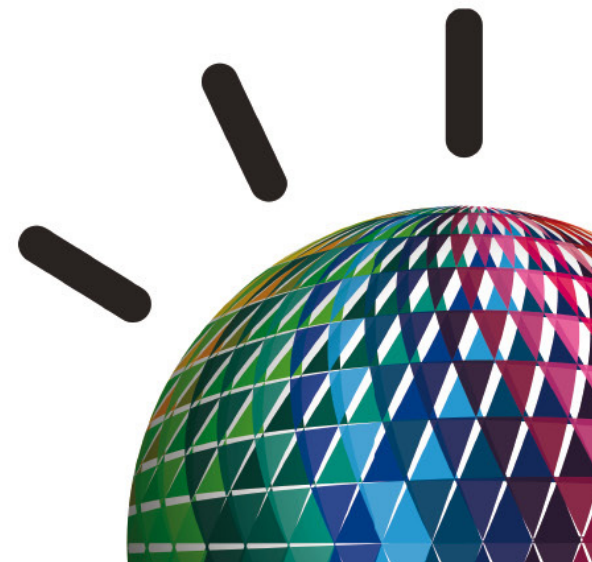
Impact2012

L'arte di rendere il business
più flessibile, agile e dinamico che mai.

Roma, 7 giugno 2012



Marco Dragoni
IBM Mobile Foundation
Platform



Enterprise Business Model Changes

- New business opportunities based upon geo location
- Anytime, anywhere business transactions
- Importance of social business interactions

App Development Lifecycle Complexity

- Complexity of multiple device platforms with fragmented Web, native, and hybrid model landscape
- Connecting the enterprise back-end services in a secure and scalable manner
- Unique mobile requirements (user interface, connected/disconnected use, version upgrades, etc.)

Mobile Security and Management

- Protection of privacy and confidential information
- Use of client-owned smartphones and tablets
- Visibility, Security & Management of mobile platform requirements



Top Mobile Adoption Concerns:

1. Security/privacy (53%)
2. Cost of developing for multiple mobile platforms (52%)
3. Integrating cloud services to mobile devices (51%)



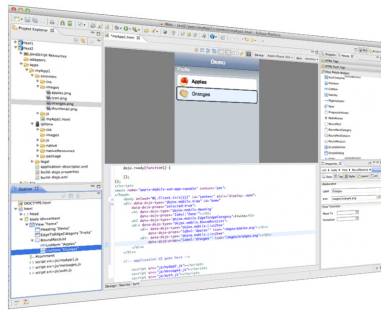
Source: 2011 IBM Tech Trends Report

<https://www.ibm.com/developerworks/mydeveloperworks/blogs/techtrends/entry/home?lang=en>

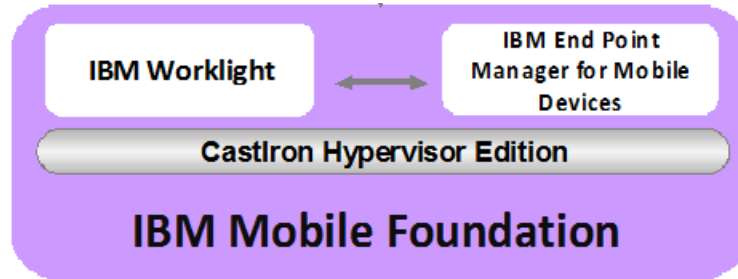


IBM Mobile Foundation Platform V5

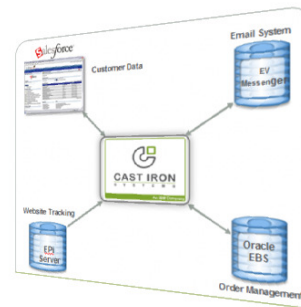
Impact2012



Develop Applications



Mobile Device Management



Connectivity



Worklight Differentiation

Impact2012

Fast and cost-effective development, integration and management of rich, cross-platform mobile applications



Worklight is not only about mobile app UI creation! It is a full mobile middleware

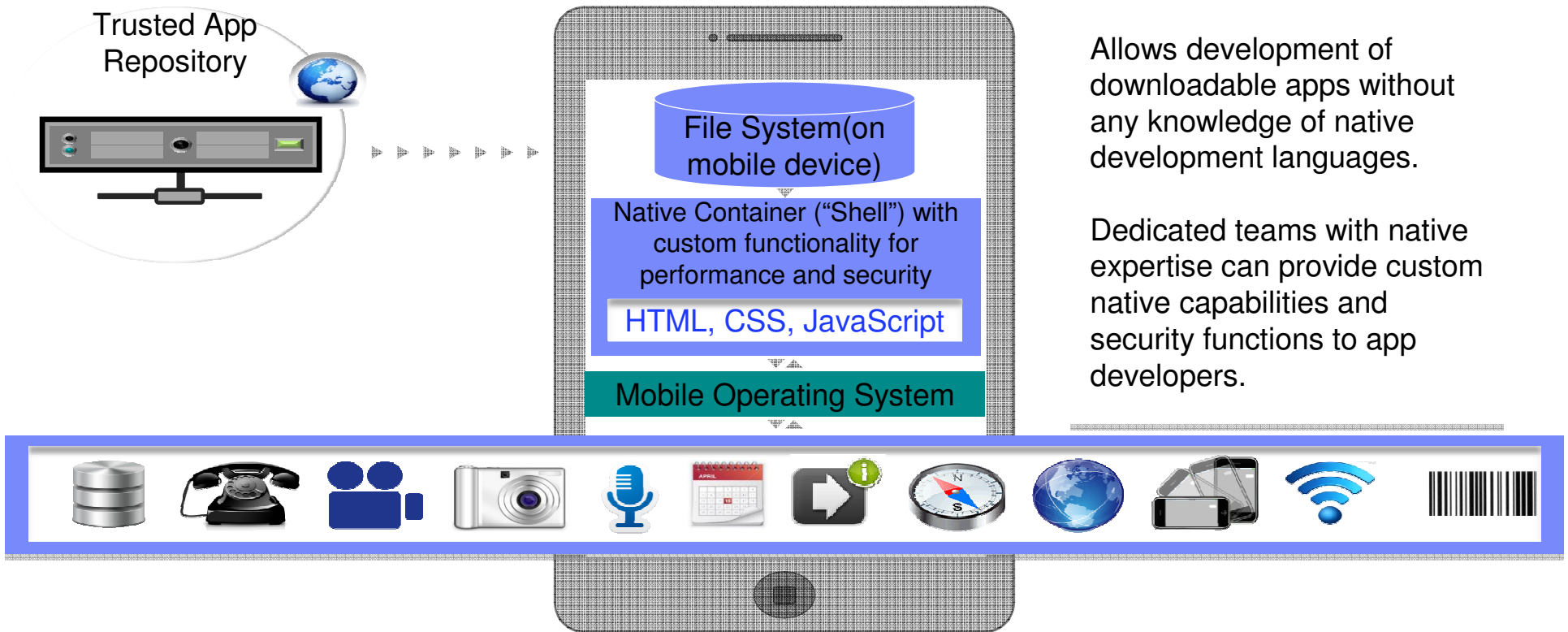
Client Challenge

Using standards-based technologies and tools and delivering an enterprise-grade services layer that meets the needs of mobile employees and customers

Key Capabilities

Mobile optimized middleware

- Open approach to 3rd-party integration
- Mix native and HTML
- Strong authentication framework
- Encrypted offline availability
- Enterprise back-end connectivity
- Unified push notifications
- Data collection for analytics
- Direct updates and remote disablement
- Packaged runtime skins



Allows development of downloadable apps without any knowledge of native development languages.

Dedicated teams with native expertise can provide custom native capabilities and security functions to app developers.



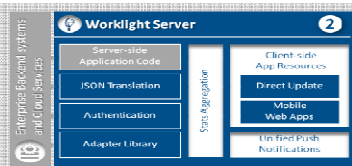
Worklight Overview

Impact2012



Worklight Studio

The most complete, extensible environment with maximum code reuse and per-device optimization



Worklight Server

Unified notifications, runtime skins, version management, security, integration and delivery



Worklight Runtime Components

Extensive libraries and client APIs that expose and interface with native device functionality



Worklight Console

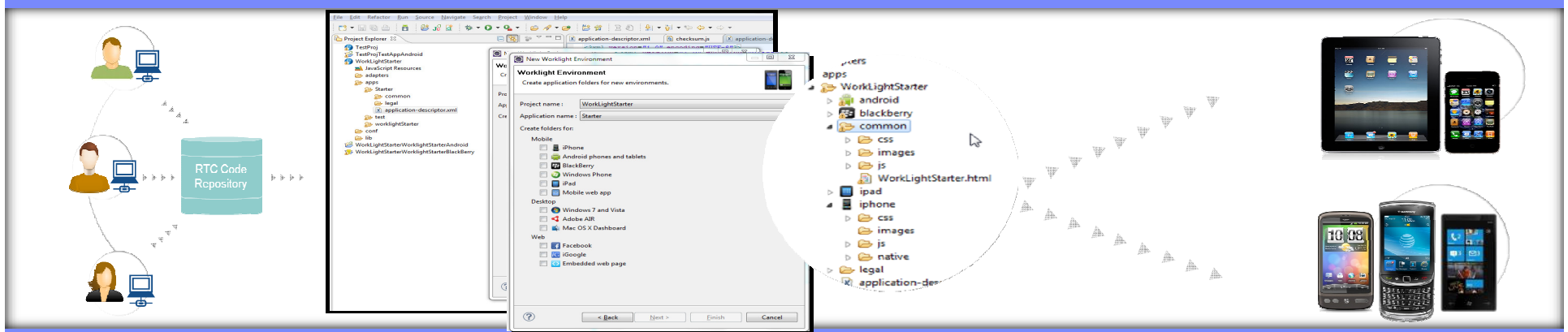
A web-based console for real-time analytics and control of your mobile apps and infrastructure



Some Worklight functionalities

Impact2012

- Application Development - Build once. Run anywhere
- Backend integration – Integration layer and security auth mechanism
- Push Notifications
- Control and Management – Version Control, Data Collection





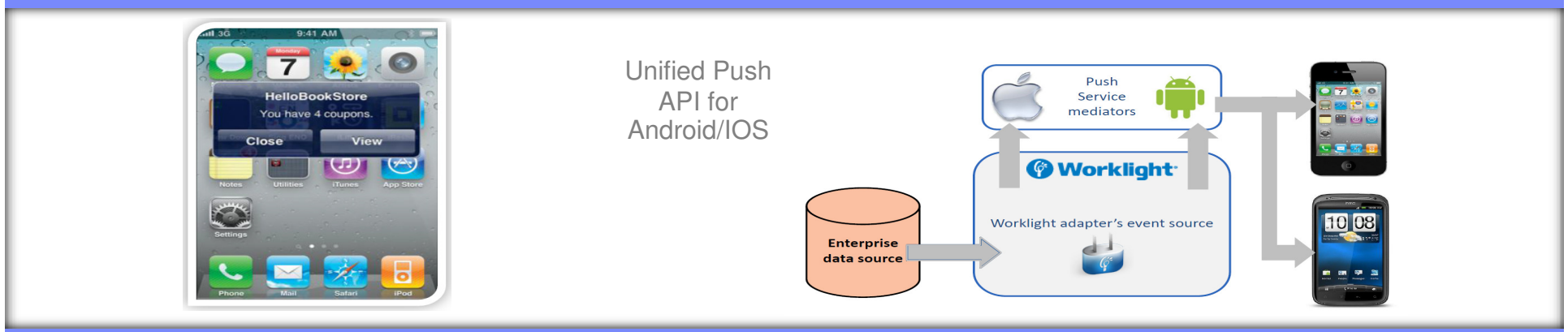
Some Worklight functionalities

Impact2012

- Application Development - Build once. Run anywhere
- Backend integration – Integration layer and security auth mechanism
- Push Notifications
- Control and Management – Version Control, Data Collection



- Application Development - Build once. Run anywhere
- Backend integration – Integration layer and security auth mechanism
- **Push Notifications**
- Control and Management – Version Control, Data Collection

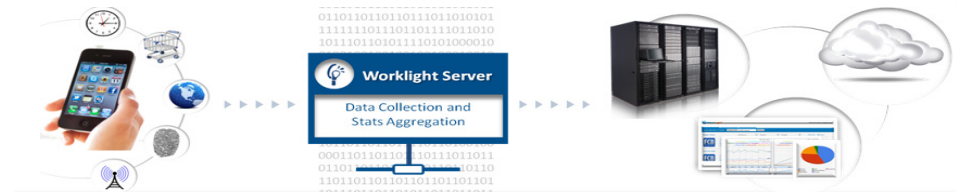
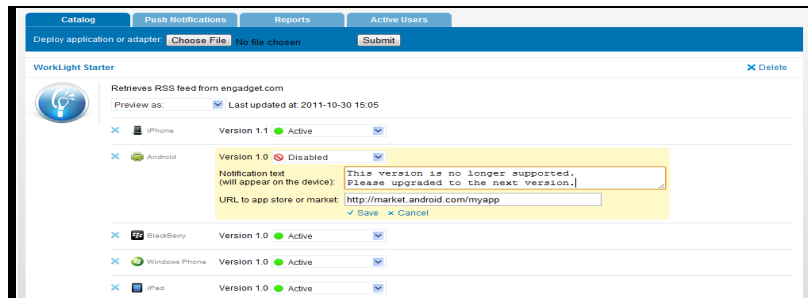




Some Worklight functionalities

Impact2012

- Application Development - Build once. Run anywhere
- Backend integration – Integration layer and security auth mechanism
- Push Notifications
- Control and Management – Version Control, Data Collection





End to end architecture overview

Impact2012





Impact2012

Thank You

Marco Dragoni