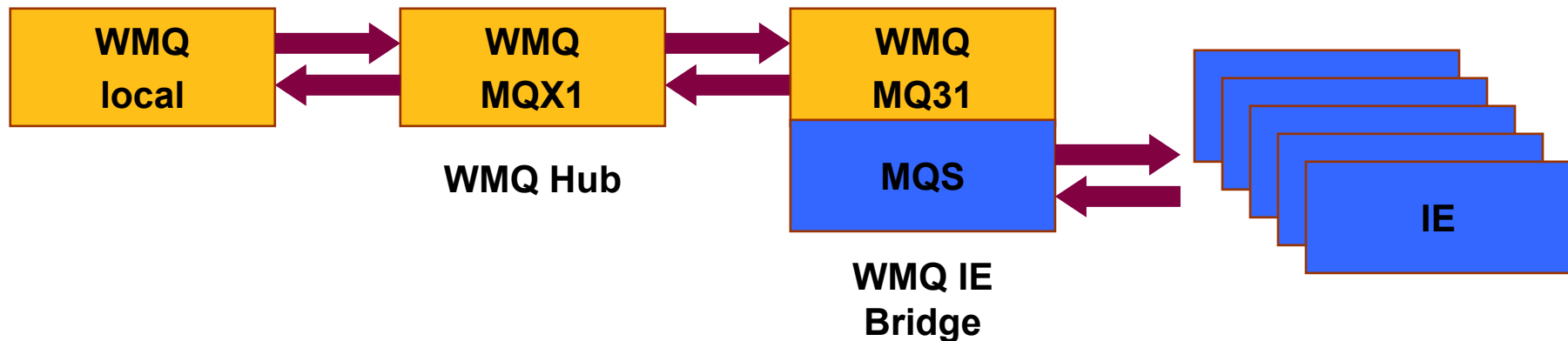


WMQ – Information Exchange Bridge



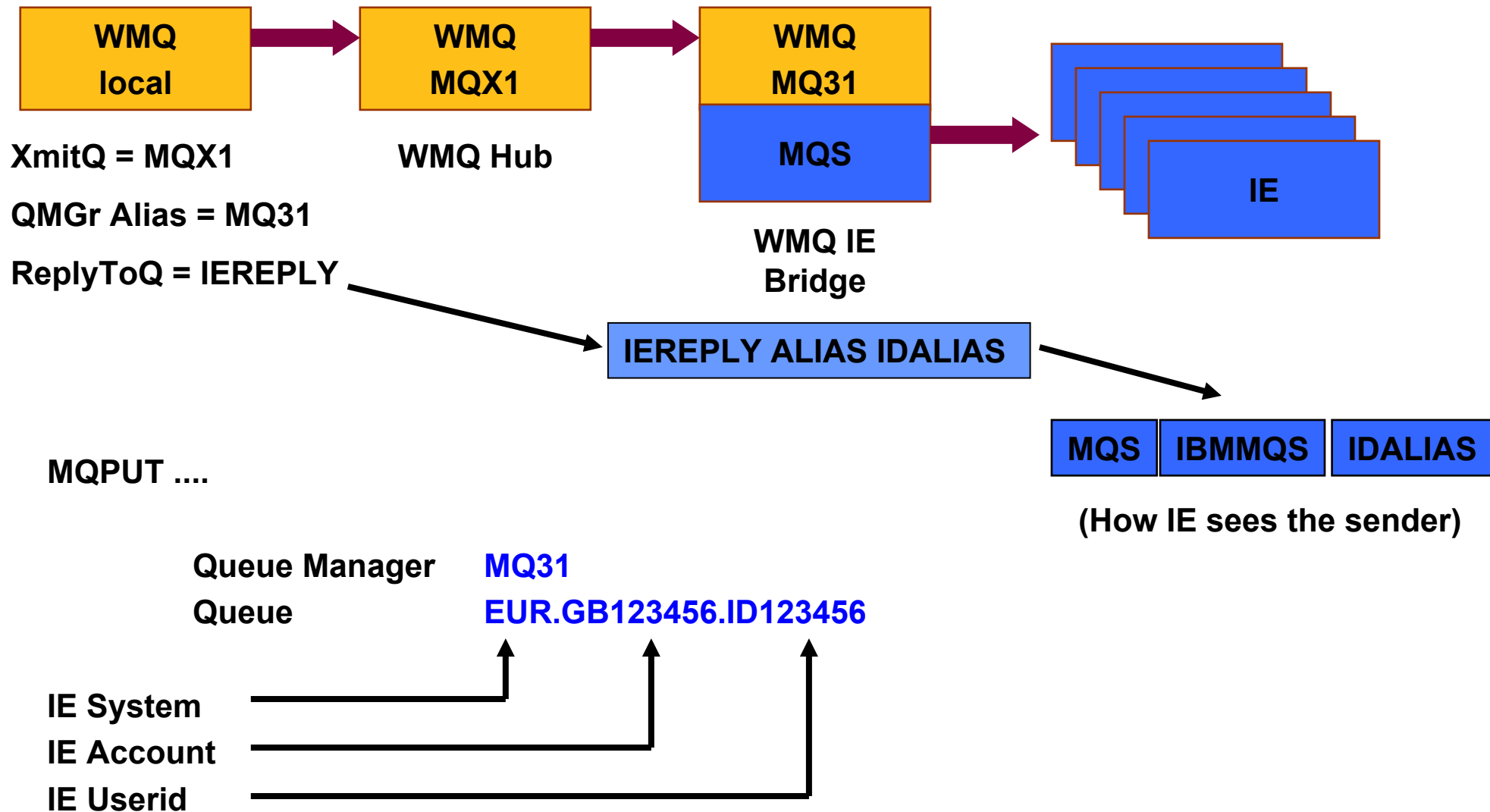
MQX1 **WMQ Queue Manager**

MQ31 **WMQ Queue Manager**

MQS **Information Exchange Peer System**

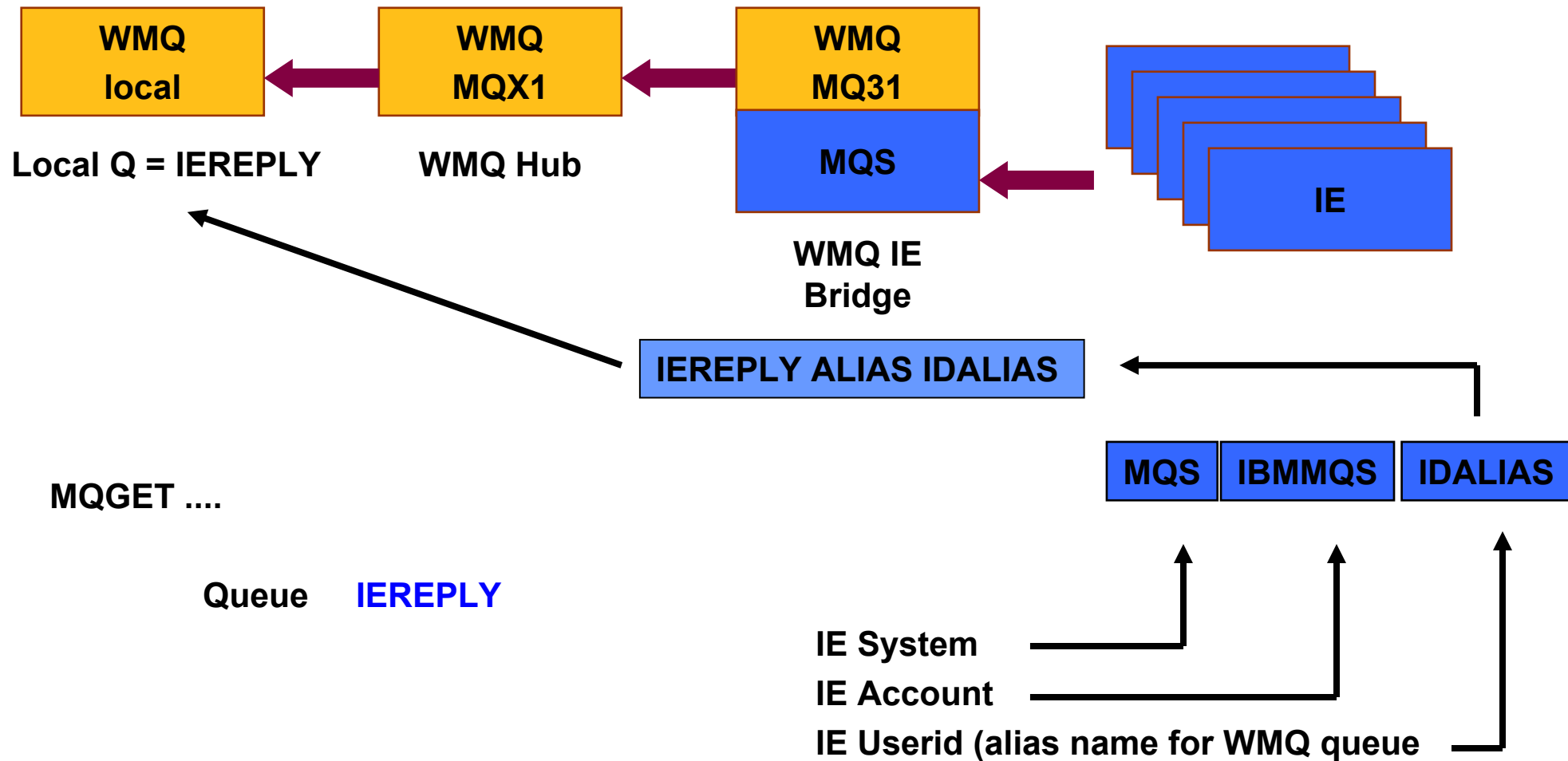
Bridge converts WebSphere MQ and Information Exchange addressing

WMQ to Information Exchange



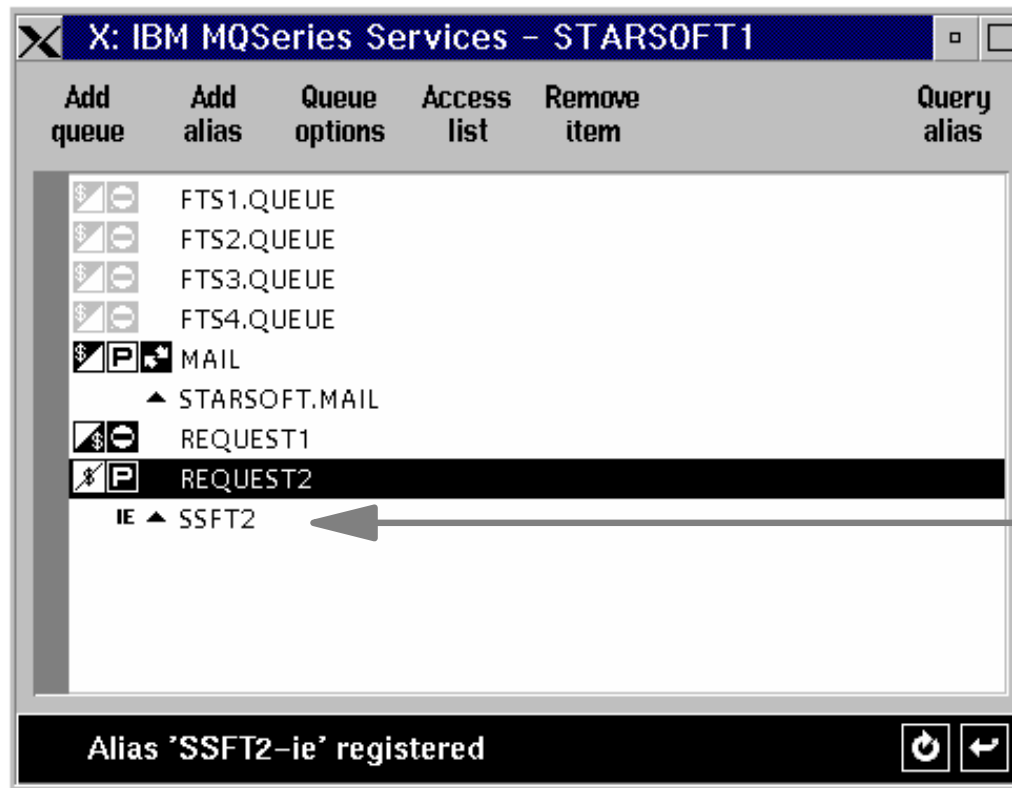
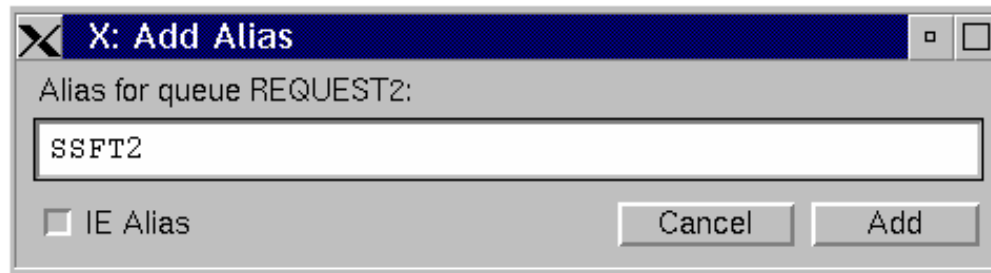
- Sender can prefix message with MQSIE header (maps to IE Common Data Header)
- ASCII to EBCDIC conversion (no numeric fields)
- Undelivered messages held (in IE) for 45 days maximum
- Purge with expiry report to WMQ sender (depending on WMQ message report options)
- Sender can request reports on SENT and NOTSENT messages from the bridge
- Sent to sender's reply-to queue
- EDI data formats supported (X12, UCS, UN/EDIFACT, UNTDI)

Information Exchange to WMQ



- WebSphere MQ queue owner pre-defines alias name for his Information Exchanged enabled queue
- Information Exchange user send to SYS=**MQS**,
ACCOUNT=**IBMMQS**, USERID=**IDALIAS**
- Bridge looks up alias and finds WebSphere MQ destination queue

Information Exchange to WMQ Cont'd



IE Alias added