

MQSeries Integrator FTPSend Plug-In Version 1.1

18th April 2001

Neil Kolban
MQSeries Technical Support
IBM Advanced Technical Support
Dallas, TX
USA

kolban@us.ibm.com

Property of IBM

Take Note!

Before using this report be sure to read the general information under "Notices".

First Edition, April 2001

This edition applies to Version 1.1 of MQSeries Integrator – FTPSend Plug-In and to all subsequent releases and modifications unless otherwise indicated in new editions.

© **Copyright International Business Machines Corporation 2001**. All rights reserved. Note to US Government Users -- Documentation related to restricted rights -- Use, duplication or disclosure is subject to restrictions set forth in GSA ADP Schedule contract with IBM Corp.

Table of Contents

Notices	iv
Trademarks and service marks	iv
Summary of Ammendments	v
Preface	vi
Chapter 1. Introduction	1
Using the FTP Send node	1
Chapter 2. Installing the FTP Send node	3
SupportPac contents.....	3
Prerequisites	3
Supported Platforms	3
Installing the plug-in node on broker system	3
Integrating the plug-in node into the Windows Control Center	4

Notices

The following paragraph does not apply in any country where such provisions are inconsistent with local law.

INTERNATIONAL BUSINESS MACHINES CORPORATION PROVIDES THIS PUBLICATION "AS IS" WITHOUT WARRANTY OF ANY KIND, EITHER EXPRESS OR IMPLIED, INCLUDING, BUT NOT LIMITED TO, THE IMPLIED WARRANTIES OF MERCHANTABILITY OR FITNESS FOR A PARTICULAR PURPOSE.

Some states do not allow disclaimer of express or implied warranties in certain transactions, therefore this statement may not apply to you.

References in this publication to IBM products, programs, or services do not imply that IBM intends to make these available in all countries in which IBM operates.

Any reference to an IBM licensed program or other IBM product in this publication is not intended to state or imply that only IBM's program or other product may be used. Any functionally equivalent program that does not infringe any of the intellectual property rights may be used instead of the IBM product.

Evaluation and verification of operation in conjunction with other products, except those expressly designated by IBM, is the user's responsibility.

IBM may have patents or pending patent applications covering subject matter in this document. The furnishing of this document does not give you any license to these patents. You can send license inquiries, in writing, to the IBM Director of Licensing, IBM Corporation, 500 Columbus Avenue, Thornwood, New York 10594, USA.

The information contained in this document has not been submitted to any formal IBM test and is distributed AS-IS. The use of the information or the implementation of any of these techniques is a customer responsibility and depends on the customer's ability to evaluate and integrate them into the customer's operational environment. While each item has been reviewed by IBM for accuracy in a specific situation, there is no guarantee that the same or similar results will be obtained elsewhere. Customers attempting to adapt these techniques to their own environments do so at their own risk.

Trademarks and service marks

The following terms, used in this publication, are trademarks or registered trademarks of the IBM Corporation in the United States or other countries or both: IBM

- MQSeries
- MQSeries Integrator
- MQSI

The following terms are trademarks of other companies:

- Windows NT, Visual Studio Microsoft Corporation

Summary of Ammendments

Date	Changes
December 2000	Initial release
April 2001	<ul style="list-style-type: none">• Support for WKSPACE file name• Support for Ascii/Binary option• Support for Password visibility change in attributes• Self registration of messages• First release as a SupportPac

Preface

The MQSeries Integrator Version 2 (MQSI V2) product provides the capability for it to be extended with the creation of custom nodes and parsers. This SupportPac provides an extension node called **FTPSend**. This node is intended to be used within an MQSI message flow to output message data to a file managed by a remote FTP server.

Chapter 1. Introduction

This document describes the **FTPSend** add-on node for the MQSI V2 product. The purpose of this node is to provide the ability to output a piece of message data to a file managed by a remote FTP server.

Using the FTP Send node

Once installed, the FTP Send node can be added to any message flow. The node has the following primitives icon:

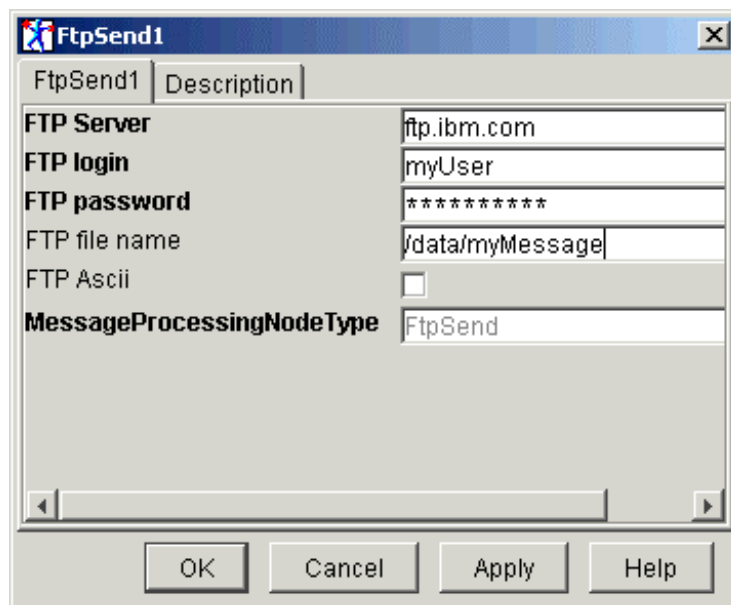


When displayed in a message flow, it appears as the following icon:



The node has one input terminal and one output terminal. The input terminal called *in* accepts the message being processed so far. The message is propagated without change and without pause through to the *out* terminal.

When the message passed through the FTP Send node, it is FTP'd to a target FTP server and saved in a named file on that server. The connection parameters to the FTP server are supplied as properties of the node. The following illustrates the properties of the node:



- FTP Server – The hostname or TCP/IP address of the server machine hosting the FTP server
- FTP Login – The login userid used to authenticate with the FTP server
- FTP Password – The password of the userid used to authenticate with the FTP server. The password is hidden as it is entered.
- FTP file name – The name of the file into which the message will be saved

The name of the file to be created at the FTP server can be supplied dynamically in the message flow. When the FTPSend node is encountered, it will look for the name of a file at the:

Root.WKSPACE.FTPSend.FileName message tree location.

Note: It is recommended that the WorkSpace parser be installed to automatically delete work space data.

- FTP Ascii – A check box. If checked, the data will be transmitted with ascii data conversion.

If no text is found at Root.WKSPACE.FTPSend.FileName then the default file name supplied in the attributes of the configured node will be used. If neither are supplied, an error will be logged.

Chapter 2. Installing the FTP Send node

SupportPac contents

The supplied zip file should be unzipped in a temporary directory. The following files and sub-directories will be created:

/source

```
FtpSend.c
NodeUtils.c
NodeUtils.h
PasswordProperties.java
StdAfx.c
StdAfx.h
```

/NT

```
FtpSend
FtpSend.gif
FtpSend.lil
FtpSend.properties
FtpSend.wdp
FtpSend30.gif
FtpSend42.gif
FtpSend58.gif
FtpSend84.gif
MessageProcessingNodeType_FtpSend.htm
PasswordPropertyEditor.class
workspace.lil
```

license2.txt

ia73.pdf

Prerequisites

This SupportPac provides a plug-in node to be used with the IBM MQSeries Integrator Version 2.0.1 and above. For normal use, there are no other prerequisite products other than those required by IBM MQSeries Integrator Version 2.0.1 itself. If any changes are to be made to the plug-in node, an appropriate C compiler is required.

Supported Platforms

This SupportPac has been developed and tested in a Microsoft Windows NT environment.

Installing the plug-in node on broker system

The plug-in 'lil' file should be installed by copying or moving the appropriate file to the following directory:

- <mqsi_root>\bin (Windows)

You must stop and restart the broker to enable it to detect the existence of the new 'lil'. The optional workspace.lil file provides the WKSPACE parser and should also be copied to this directory if dynamic file names are desired.

Integrating the plug-in node into the Windows Control Center

The necessary files for integrating the plug-in into the Windows Control Center are provided in the /NT directory.

Use the following table to copy the files to their correct location. These locations should already exist providing you have deployed at least one message flow. Append your **<MQSI V2 root install path>** to the **Copy to location** value.

Use the following to replace the placeholders:

<hostname> - TCP/IP hostname
 <CM QMName> - Configuration Manager's queue manager name

File names	Target directory location
FtpSend.gif FtpSend30.gif FtpSend42.gif FtpSend58.gif FtpSend84.gif	\Tool\Images
FtpSend FtpSend.wdp	\Tool\repository\private\<HostName>\<CM QMName>\MessageProcessingNodeType
FtpSend.properties	\Tool\com\isv
MessageProcessingNodeType_ FtpSend.htm	\Tool\help\com\isv
PasswordPropertyEditor.class	\Tool\help\com\isv

After copying the files, any running brokers must be restarted. Following the restart, the new FTPSend node can be added to the Control Center by:

- Right click IBM Primitives
- Select Add to Workspace
- Select the FTPSend Node
- Check In the FTPSend Node

----- End of Document -----