

IBM App Connect Professional

*Tutorial: Migrating account data from a  
flat file to Salesforce.com*

**IBM**

**Note**

Before using this information and the product it supports, read the information in "Notices" on page 19.

When you send information to IBM, you grant IBM a nonexclusive right to use or distribute the information in any way it believes appropriate without incurring any obligation to you.

© **Copyright IBM Corporation 2017.**

US Government Users Restricted Rights – Use, duplication or disclosure restricted by GSA ADP Schedule Contract with IBM Corp.

---

## Contents

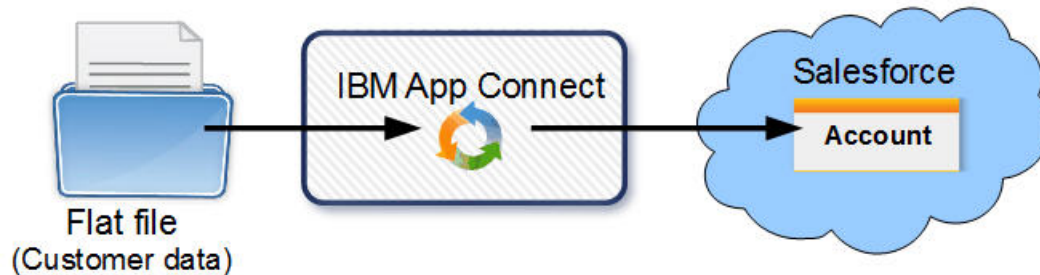
<b>Introduction . . . . .</b>	<b>1</b>	<b>Sending your comments to IBM . . . . .</b>	<b>23</b>
<b>Summary . . . . .</b>	<b>3</b>		
<b>Creating the project in the web management console . . . . .</b>	<b>5</b>		
<b>Editing the project in the Studio . . . . .</b>	<b>9</b>		
<b>Using the integration project to migrate data to Salesforce . . . . .</b>	<b>13</b>		
<b>Conclusion . . . . .</b>	<b>17</b>		
<b>Notices . . . . .</b>	<b>19</b>		
Programming interface information . . . . .	20		
Trademarks . . . . .	21		



---

## Introduction

This tutorial illustrates how you can use IBM® App Connect Professional on Cloud to migrate customer data from a flat file to Salesforce.com's cloud offerings.



In many cases, in a move from proprietary applications to SaaS and cloud applications, you need to migrate data from your proprietary applications to the cloud applications. Many proprietary applications use flat files to exchange data with other applications. Most ERP applications also support flat file imports/exports.

In this tutorial, you use IBM App Connect Professional's configuration-not-coding approach and exploit a pre-built Template Integration Project (TIP) that encapsulate this specific integration use case and includes preferred practices.

### Learning objectives

- See how easy it is to migrate data from a CSV file to Salesforce.com Accounts
- Understand how to create an integration project from a template
- Get a meaningful experience of using the web management console and Studio of IBM App Connect Professional

### Time required

This tutorial should take approximately 30 minutes to finish. If you explore other concepts related to this tutorial, it could take longer to complete.

### Skill level

Any

### Audience

Developers of integration solutions interested in using IBM App Connect Professional for data migration.

### Online resources

- This tutorial web page in the IBM Integration community (Developer Center)
- PDF of this tutorial
- Example data file (4 KB).

**Tip:** If you have difficulty with the resource links, open the following address in your web browser to browse and select files: [ftp://public.dhe.ibm.com/software/integration/hybrid\\_integration/appconnect/](ftp://public.dhe.ibm.com/software/integration/hybrid_integration/appconnect/)

## Requirements

- IBM App Connect Professional.

This tutorial was prepared using the free full-featured IBM App Connect Professional trial. Try IBM App Connect Professional for free.

- A Salesforce.com account that is to be used to read account data from Salesforce.com and to create and update account data in Salesforce.com.

This tutorial was prepared using a free Salesforce Developer account.

Before starting this tutorial, note the username, password, and security token of the Salesforce.com account.

**Tip:** The security token is needed because connectivity is provided through the Salesforce.com API. For information about finding your Salesforce.com security token, see [Reset Your Security Token](#) in the Salesforce help.

- Use a web browser such as Internet Explorer, Mozilla Firefox, Apple Safari, or Pale Moon to log in to App Connect Professional.

In this tutorial, you use the Studio (a Java™ Web Start Application) of App Connect Professional to edit an integration project. To run a Web Start application (like Studio) from your web browser, Oracle recommends using a web browser such as Internet Explorer, Mozilla Firefox, Apple Safari, or Pale Moon. Alternatively, you can download the Studio JNLP file to your computer and then run that file locally with the Java Web Start application (javaws) of the latest java version installed on your computer. For more information, see the blog post, [Java Web Start in or out of the browser](#).

**Tip:** To run Studio as a Java Web Start application from your web browser, ensure that you have selected the Java option "Enable Java content in the browser" and added the following site to the exceptions list: <https://castiron.ibmcloud.com/>

## Expected results

A Salesforce Account record is created for each row (of customer account data) in the CSV flat file submitted to IBM App Connect Professional.

## Conventions and capabilities used in this tutorial

### Concepts used:

To use flat files in App Connect Professional integrations the file must be described by a *Flat File Schema*. In this tutorial, the schema is created by the template used. The **Transform Read Flat File** activity parses the schema to transform data from string to a structured representation.

### Template used: T0041 - Flat File to Salesforce Accounts

This TIP receives a CSV file from an HTTP Post and creates Salesforce.com Accounts.

### Activities used:

- HTTP Receive Request
- Transform Read Flat File
- Try...Catch (to report any failure to insert a record into Salesforce.com)
- If Then...Else (Used to add Business Rules or Business Logic)
- Salesforce – Create Objects

---

## Summary

In a matter of minutes, you create and run an integration project in IBM App Connect Professional that migrates customer data from a flat file on your computer to create Account records in Salesforce.com.

1. Use the web management console to create an integration project from the template. "Editing the project in the Studio" on page 9
2. Open the project in the Studio to make a few changes to the configuration of your project.
3. Deploy the project to run in IBM App Connect Professional on cloud.
4. Use App Connect's HTTP Post Utility, or another utility like Postman, to submit a CSV file of customer data to be migrated.
5. Using a web browser, login to your Salesforce.com account and check the Accounts that have been created from the migrated data.





---

# Creating the project in the web management console

## Procedure

1. Log in to IBM App Connect Professional: <https://appconnect.ibmcloud.com/professional/>

**Tip:** To be able to run the Studio from your web browser, log in using a web browser such as Internet Explorer, Mozilla Firefox, Apple Safari, or Pale Moon.

This displays the web management console, showing the tabs for Create, Modify, and Run; the three main steps to get your integration solution running.

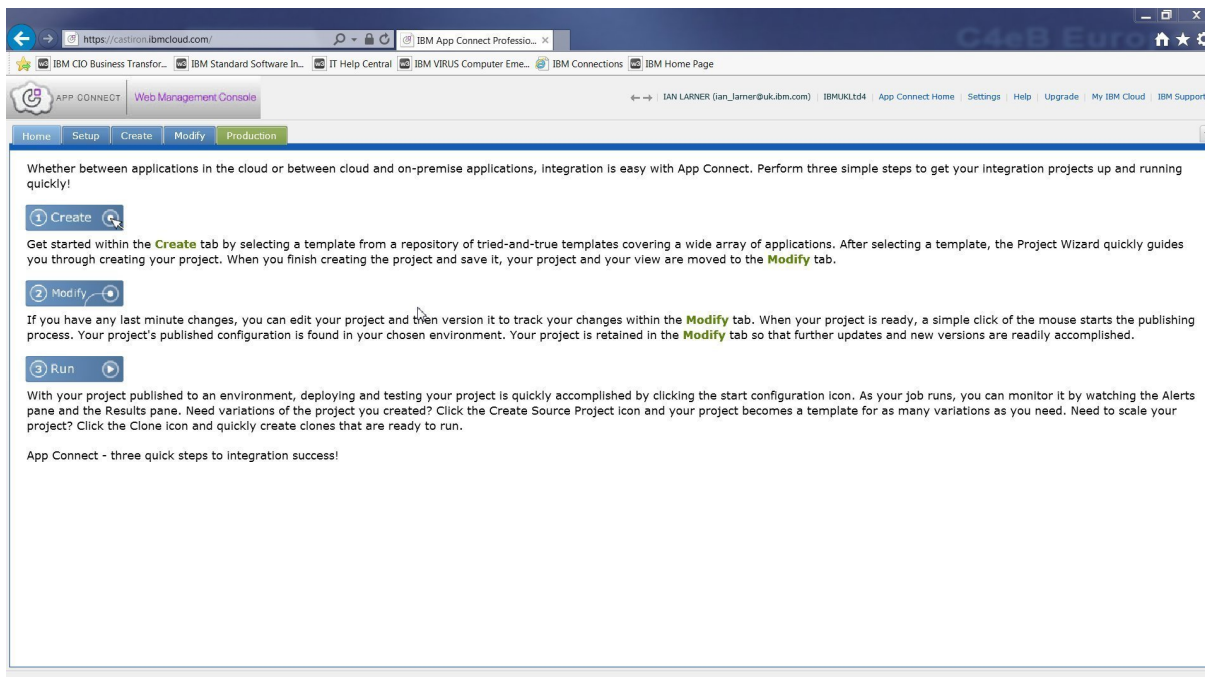


Figure 1. The web management console after logging in to IBM App Connect Professional on Cloud

2. In the web management console, click the **Create** tab. You use the **Create** tab to select a template to create an integration project or create a project from scratch.

In this tutorial, we want to find and select the template to migrate a flat file (a CSV file) to Salesforce.com. For example:

- a. Expand the Target Endpoint drop-down menu
- b. Type **s** and then scroll down to and select **salesforce.com**.
- c. Select **Search** (next to the Target Endpoint drop-down menu).

This displays a table of templates for Salesforce.com.

- d. Optional: Select the header cell of the Source column, to sort the table alphabetically.
- e. Scroll down and then select the template **T0041 - Flat File to Salesforce Accounts**

The template row indicates that the TIP is for flat file to Salesforce, that the integration project uses HTTP methods (rather than FTP, say) and that it is a certified by IBM as depicting a common use case and using preferred practices.

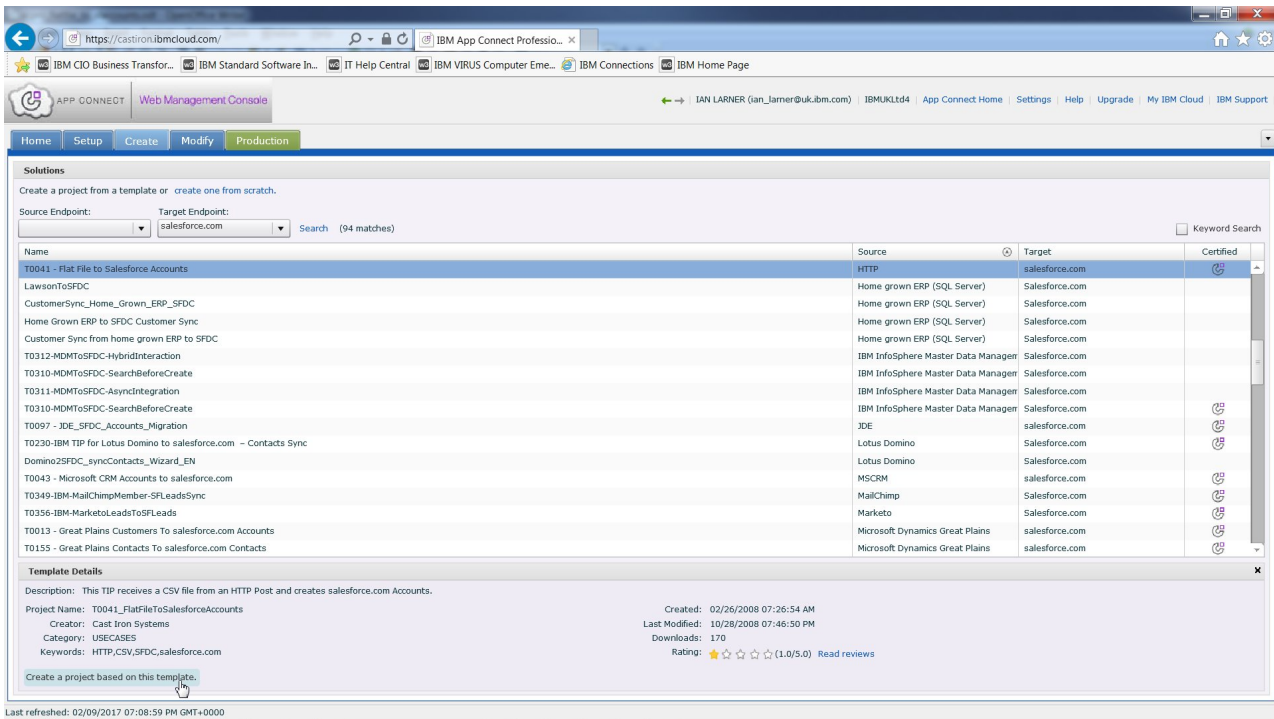


Figure 2. Web management console, selecting the T0041 template to create a new project

f. Select **Create a project based on this template.**

After a short while, the TIP configuration wizard is displayed.

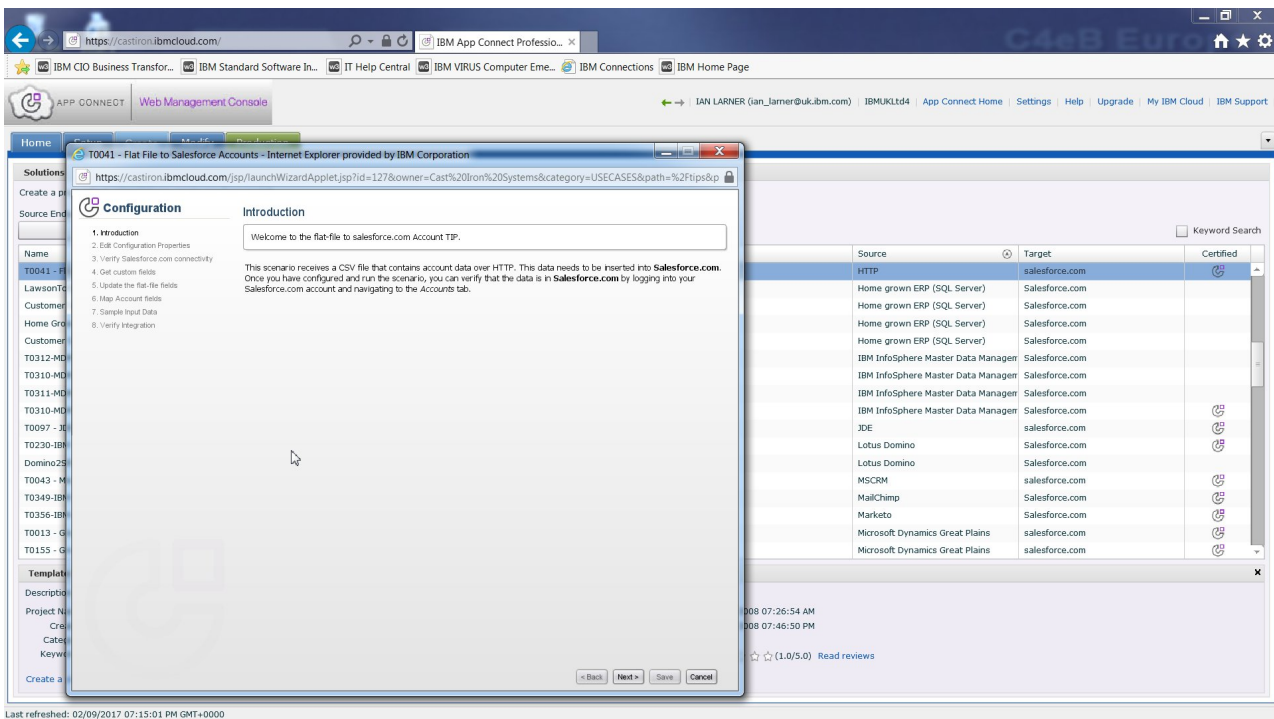


Figure 3. The TIP configuration wizard, as first opened

3. On the wizard Introduction page, click **Next**.

6 IBM App Connect Professional: Tutorial: Migrating account data from a flat file to Salesforce.com

- On the Edit Configuration Properties page, enter the credentials for your Salesforce account.  
The Salesforce.com password is the concatenation of the account password and a security token; for example, for password mysfpwd and security token 1AB2CdEfg3HijklM4N0pqrsTu, the password to enter would be: mysfpwd1AB2CdEfg3HijklM4N0pqrsTu  
Click **Next**.
- On the Verify Salesforce.com connectivity page, click **Test Connection** to verify that IBM App Connect Professional can connect to your Salesforce.com account.  
This page provides options for your to customize the Salesforce.com connectivity, if you need to.

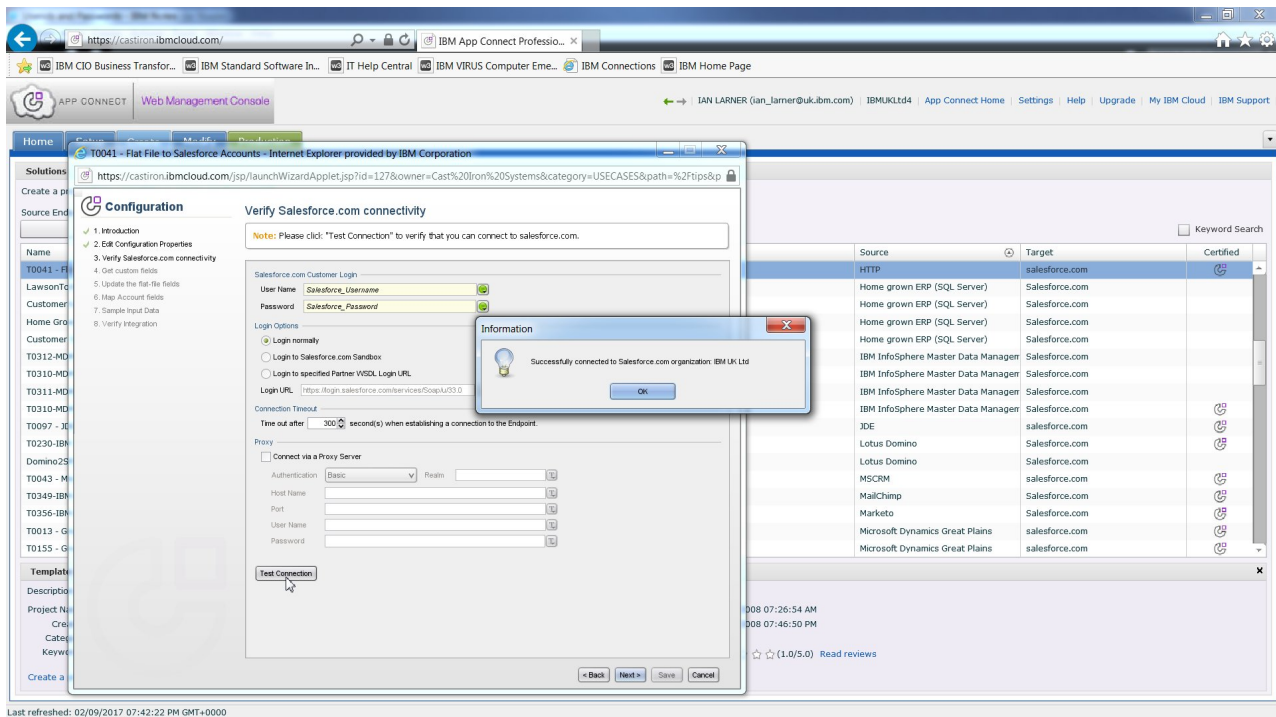


Figure 4. The TIP configuration wizard, Verify Salesforce.com connectivity page

- Click **Next**.
- On the Get custom fields page, leave the default settings.  
On this page, you have options to change the selection of target fields that you want available later to map for data to be migrated from the source file. You can also change the type of Salesforce object that the data is to be migrated to.  
Click **Next**.
  - On the Update the flat-file fields page, leave the default selections.  
On this page, you have options to change the properties and delimiters for the source fields of the flat file, and to test source data to be migrated.  
If you want to examine the properties and delimiters, select **Customer** or any of the field names in the Schema Layout pane. For example, by default each Customer in the CSV file is on a separate line, delimited by Line End (CRLF), and each field within a Customer is separated by the ',' (comma) character delimiter.  
Click **Next**.
  - On the Map Account fields page, leave the default mappings.

On the Map Account fields page, you may update the map used to migrate data from the flat file to the Salesforce Accounts. For example, if you had added custom fields to the flat file, you can drag from the name of each custom field to the name of the Salesforce Account field that you want data migrated to.

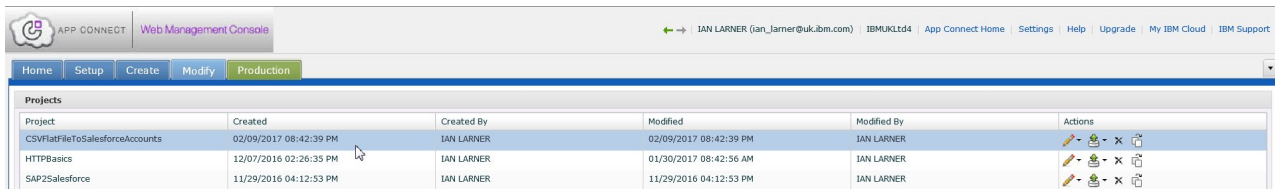
Click **Next**.

9. On the Sample Input Data page, copy the sample data and then save it into a CSV file (for example, customerdata\_accounts.csv) for use later to test the integration project.

Click **Next**.

10. On the Verify Integration page, click **Save**.

The project is added to the Modify tab, which is opened automatically.



The screenshot shows the IBM App Connect Professional Web Management Console interface. The top navigation bar includes 'APP CONNECT' and 'Web Management Console'. The user is logged in as 'IAN LARNER (ian\_larner@uk.ibm.com)'. The main navigation tabs are 'Home', 'Setup', 'Create', 'Modify', and 'Production', with 'Modify' currently selected. Below the navigation, there is a 'Projects' table with the following data:

Project	Created	Created By	Modified	Modified By	Actions
CSVFlatFileToSalesforceAccounts	02/09/2017 08:42:39 PM	IAN LARNER	02/09/2017 08:42:39 PM	IAN LARNER	[Edit] [Delete] [Refresh]
HTTPBasics	12/07/2016 02:26:35 PM	IAN LARNER	01/30/2017 08:42:56 AM	IAN LARNER	[Edit] [Delete] [Refresh]
SAP2Salesforce	11/29/2016 04:12:53 PM	IAN LARNER	11/29/2016 04:12:53 PM	IAN LARNER	[Edit] [Delete] [Refresh]

Figure 5. The TIP configuration wizard , new project opened in the Modify tab

**Hint:** In this example, the project was saved with a new name, CSVFlatFiletoSalesforceAccounts, because a project with the default name already existed in the web management console. (If you are not offered the chance to save the project with a new name, you can save the project with a new name when editing in the Studio.)

**Tip:** Before we can verify this integration project, or publish it into production to run in App Connect Professional on Cloud, we need to edit the project in the Studio to change a few configuration options.

---

## Editing the project in the Studio

To enable a project to be run in App Connect Professional on cloud, you use the Studio to select the option to run in the cloud and note the URL for the project that you use to interact with it.

### About this task

The web management console is convenient for creating your first integration project, or the initial state of other projects, but there is more that you can do in the Studio to create and customize your projects.

For example, before you can run your new project in App Connect Professional on cloud, you use the Studio to select the option to run in the cloud and note the URL for the project that you use to migrate data to Salesforce. You can also customize the URL and other aspects of the project.

### Procedure

1. In the web management console, in the Actions column for the project, select **Edit Project in Designer**.

This downloads and runs the App Connect Studio launcher application (JNLP file) to start the Studio as a Java Web Start application. There is some delay as the launcher application and Studio are loaded and initialized.

During the download, if you see a Java security request to run the App Connect Studio launcher application, select the option to run the application.

**Tip:** After the first time that you launch the Studio from the web console, you can launch the Studio by opening the downloaded JNLP file, or again from a project's **Edit in Designer** action of the web management console.

2. When the Studio has downloaded, it opens the wizard to configure the project.

Most pages of the wizard are the same as the wizard used in the web management console to create the project.

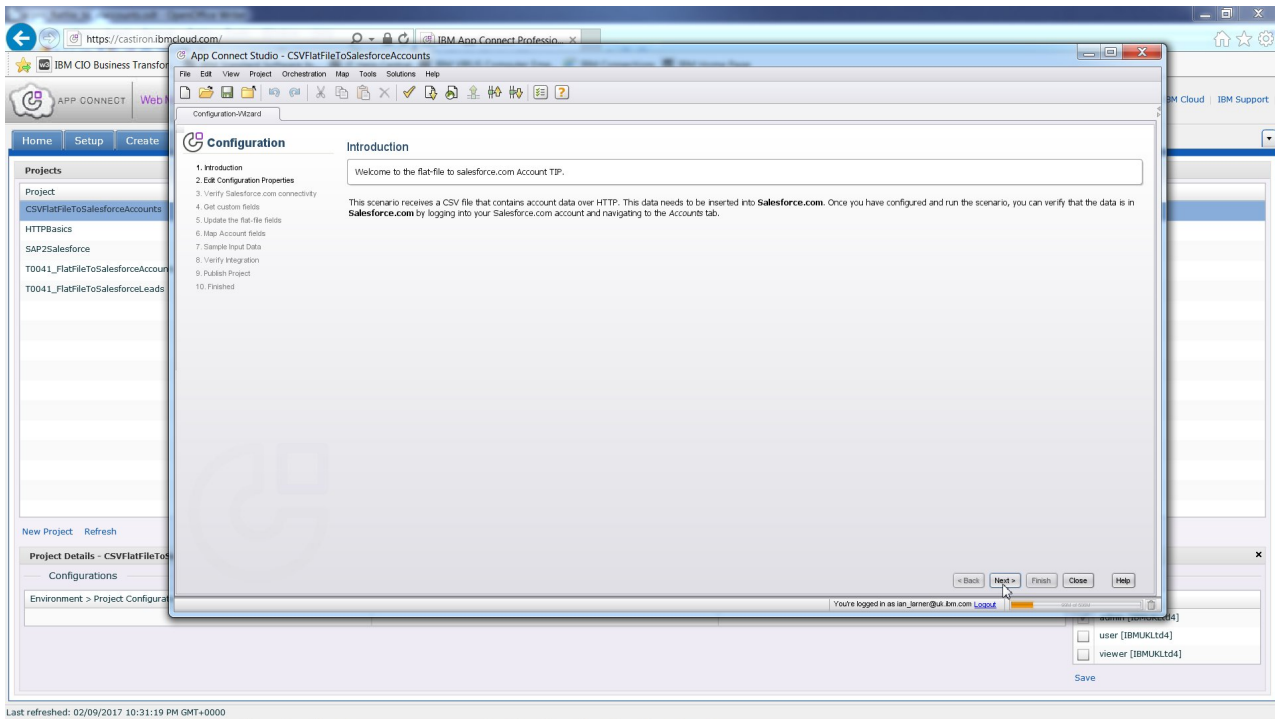


Figure 6. Studio, project configuration wizard

In this tutorial, the wizard is only used to import the project into Studio, where the project is to be configured.

Select **Next**.

3. On each page, select **Next**, until you see the Publish Project page.
4. On the Publish Project page, select **Finish**.

This displays the Finished page, where you can publish a review of this TIP. You can do that at a later time.


Select **Close**.

The project is opened in the Studio to show its *orchestration* (flow).

5. Set the option to run the project in the cloud, and determine the URL to be used.
  - a. Edit the **HTTP Receive Request** node; for example, select the node on the palette.
  - b. On the Configure view, note the value of the parameter URL (Path After Hostname); by default, `kick_off`.

This is the unique value used to invoke this project when published. Optionally, change the value; for example, to: `csv2accounts`.

- c. On the Pick Endpoint view, click **Edit**.
  - d. In the Edit Endpoint window, in the Location section, select the check box **Configure for App Connect on cloud** and note the hostname and port to be used later: `https://provide.castiron.ibmcloud.com:443`
  - e. Click **OK**.

6. Validate the project by selecting **Orchestration > Validate**, or by selecting the Toolbar 'tick' icon: 

You should see the success message The Studio Project is Valid.

Close the message window.

7. Save your project to the cloud.

- a. Ensure that you are still logged in to App Connect Professional on cloud. If you see a Login link at the bottom of the Studio, select the link to log in.



Figure 7. Logging in to the Studio after a period of inactivity

- b. Select **File > Save Project (To Cloud)** or select the Toolbar 'Save' icon:
- c. Optional: You can now close the Studio.
8. In the web management console, publish the project; select the **Publish Project** icon:
9. Select the Production tab, to show the project configuration listed.
10. To run the project configuration, click the **Run Configuration** icon:

The project configuration is now running and ready to accept requests to migrate data. You can use the dashboard of the web management console to manage use of the project configuration, such as to browse the summary, results, and any alerts.

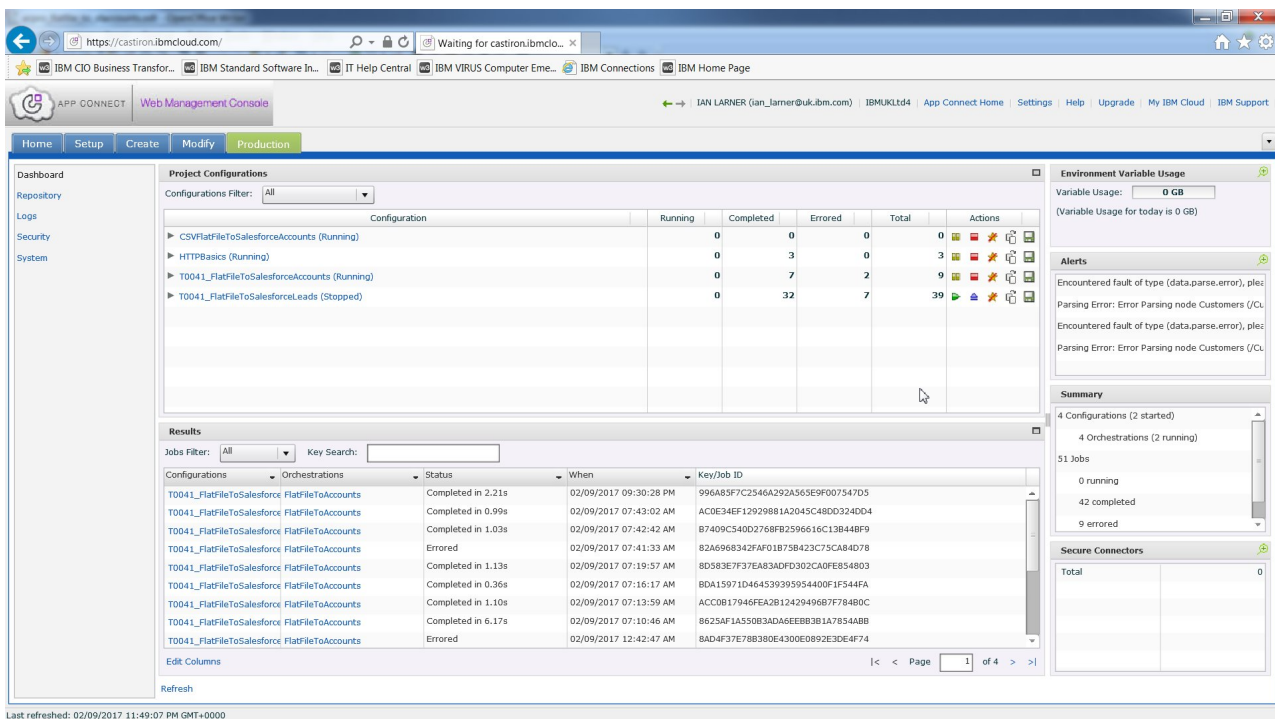


Figure 8. New project configuration running in the web management console





---

## Using the integration project to migrate data to Salesforce

The integration project can be used to migrate data from a CSV file to create Salesforce.com Accounts.

### About this task

To test the data migration, you can use App Connect Professional's HTTP Post Utility or another utility like Postman, to submit a CSV file of customer data to be migrated.

For the CSV file, you can use the sample data that you saved earlier when creating the project, or use some other CSV file that has customer data with the following syntax:

```
name, address1, address2, city, state, zip, country, phone, fax
```

For example:

```
John Doe1, 2593 Coast Ave, #200, Mountain View, CA, 94043, USA, 666-666-7777, 666-666-7777  
John Doe2, 2593 Coast Ave, #200, Mountain View, CA, 94043, USA, 666-666-7777, 666-666-7777  
John Doe3, 2593 Coast Ave, #200, Mountain View, CA, 94043, USA, 666-666-7777, 666-666-7777  
John Doe4, 2593 Coast Ave, #200, Mountain View, CA, 94043, USA, 666-666-7777, 666-666-7777
```

**Hint:** Note the blank line after the last customer data line. The integration project sees each Customer data item as a separate line delimited by Line End (CRLF), so to migrate the last customer data line that line must end with CRLF.

### Procedure

1. Using a web browser, login to your Salesforce.com account and check the Accounts that have been created from the migrated data.
  - a. Log in to your Salesforce.com account, and then select the Accounts view.
  - b. Select a view for new accounts from the drop down menu (for example, **New This Week**), and then click the refresh icon to ensure that the view is current.

Your list of accounts should not show any of the test records to be used (John Doe\*).

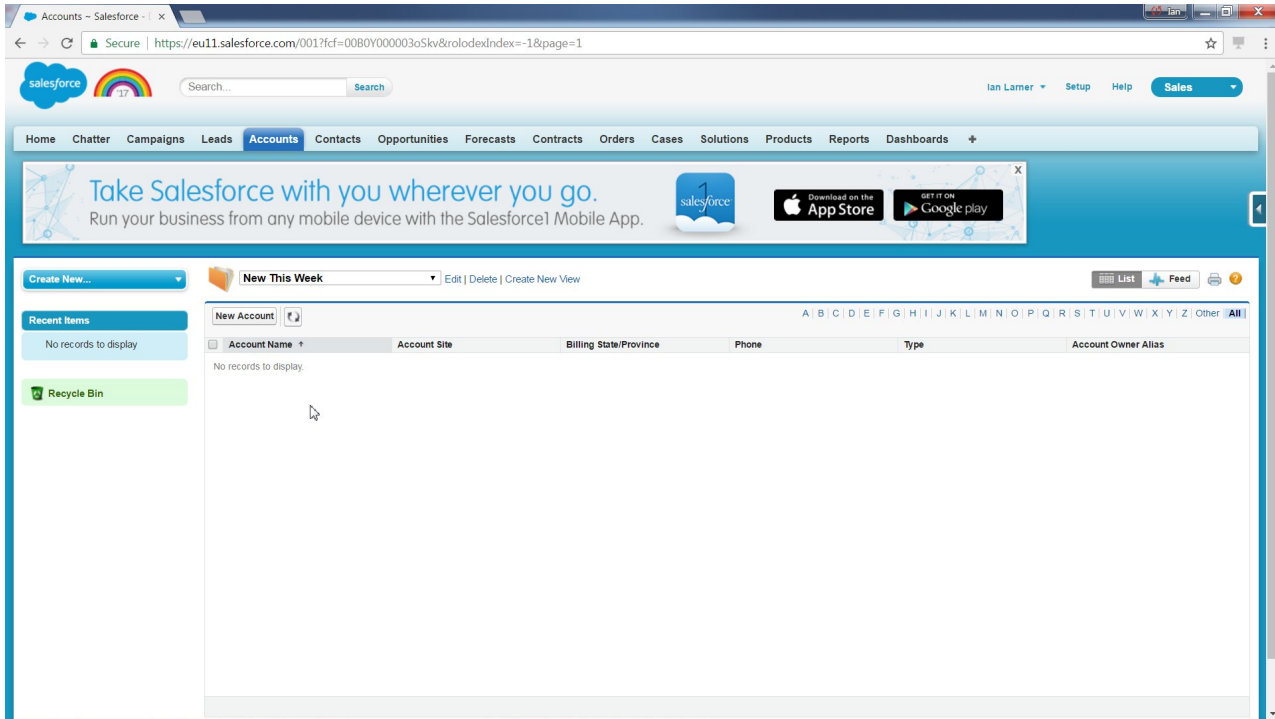


Figure 9. Salesforce Accounts view, not showing any of the test records to be added.

2. To use your integration project with the Postman utility, start Postman.
  - a. Select the POST method.
  - b. Enter the URL string containing the App Connect Professional hostname and port that you noted when configuring the project in the Studio. Append the environment value, Deployment, and the URL parameter (for example, /csv2accounts) that you configured earlier to be used to invoke the project.  
The URL, should be like the following:  
`https://provide.castiron.ibmcloud.com:443/env/Production/csv2accounts`
  - c. Select the Authorization tab, choose Basic Auth, and then set Username and Password to the values for your IBM ID.
  - d. Select the Body tab, and then select the binary check box.
  - e. Click the **Choose Files** button, browse to and select your CSV file (for example, customerdata\_accounts.csv), and then click **Open**.
  - f. To invoke the integration project, to migrate the customer data from the flat file, click **Send**.  
If you have done everything right, you get a 200 success message in Postman.

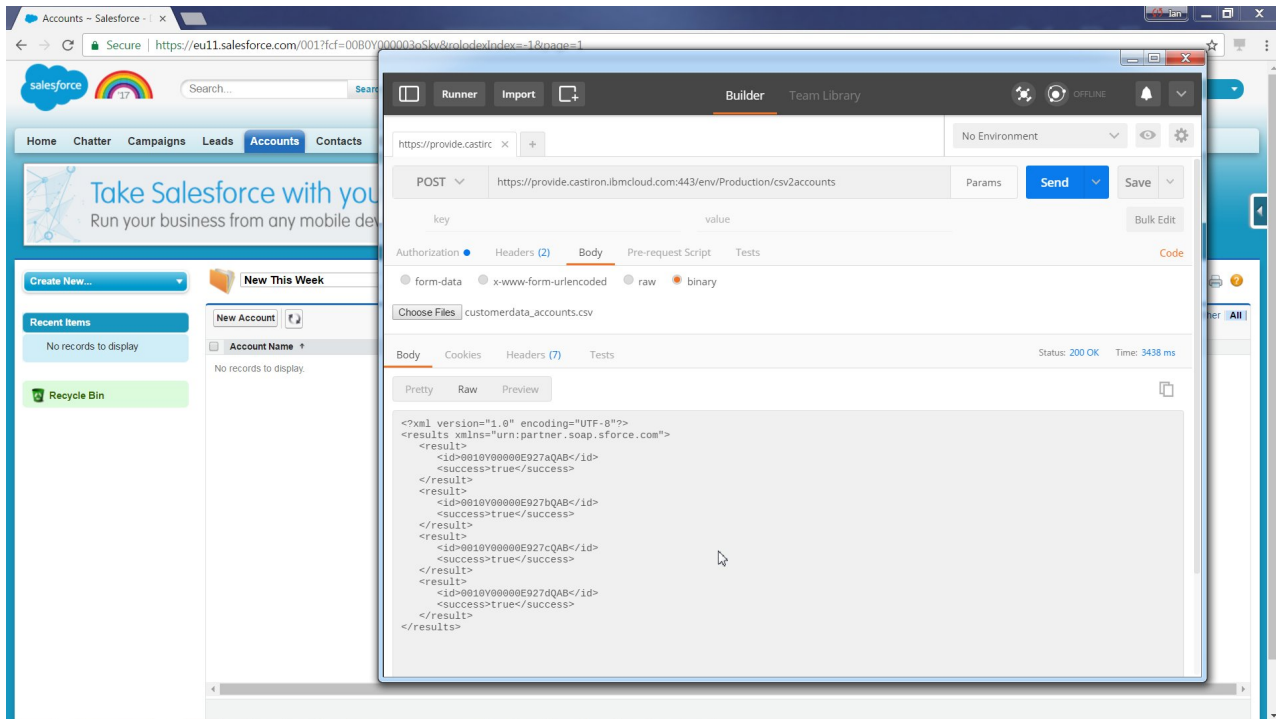


Figure 10. Postman utility, success messages after sending a CSV file of customer data to be added to Salesforce.

g. In Salesforce, refresh the Accounts view.

You should now see the Account records created in Salesforce, for customer data migrated from the CSV file by App Connect Professional.

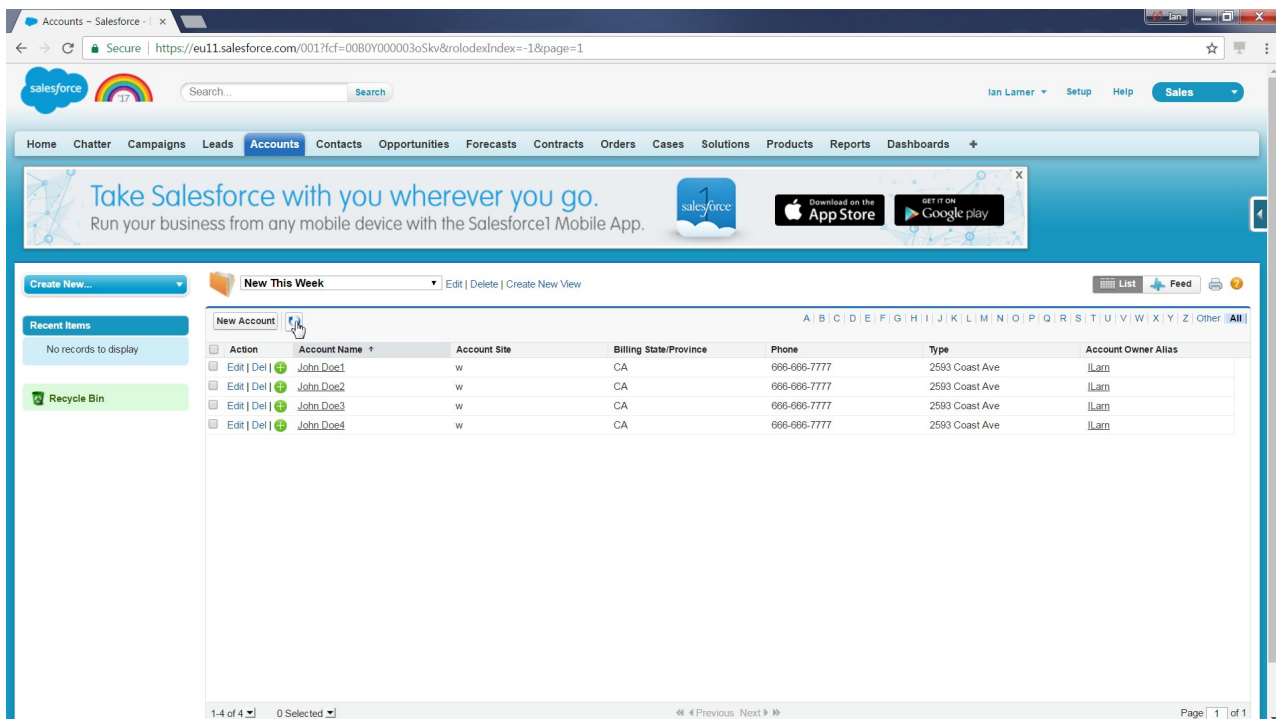


Figure 11. Salesforce Accounts view, showing the Account records created for customer data migrated from the CSV file by App Connect Professional.

h. Optional: To browse any of the Accounts, select the Account Name link.

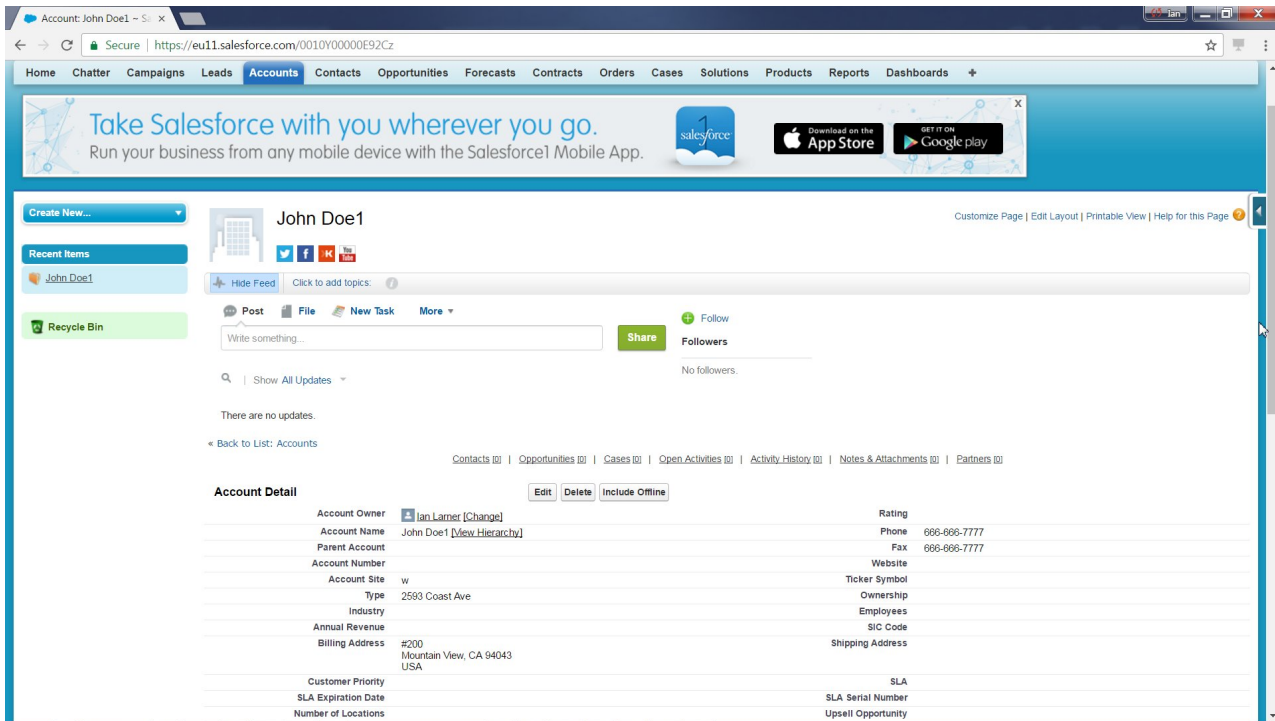


Figure 12. Salesforce, details view of an account created for migrated data.

---

## Conclusion

In a matter of minutes, you created and ran an integration project in IBM App Connect Professional to migrate customer data from a flat file on your computer to create Account records in Salesforce.com.

1. Used the web management console to create an integration project from a template.
2. Edited the project in the Studio to make a few changes to the configuration of your project.
3. Deployed the project to run in IBM App Connect Professional on cloud.
4. Used the Postman utility, to POST a CSV file of customer data to be migrated through App Connect Professional.
5. Used a web browser to log in to your Salesforce.com account and checked that the Accounts were created from the migrated data.

This completes the tutorial.



---

## Notices

This information was developed for products and services offered in the U.S.A.

IBM may not offer the products, services, or features discussed in this document in other countries. Consult your local IBM representative for information on the products and services currently available in your area. Any reference to an IBM product, program, or service is not intended to state or imply that only that IBM product, program, or service may be used. Any functionally equivalent product, program, or service that does not infringe any IBM intellectual property right may be used instead. However, it is the user's responsibility to evaluate and verify the operation of any non-IBM product, program, or service.

IBM may have patents or pending patent applications covering subject matter described in this document. The furnishing of this document does not grant you any license to these patents. You can send license inquiries, in writing, to:

IBM Director of Licensing  
IBM Corporation  
North Castle Drive  
Armonk, NY 10504-1785  
U.S.A.

For license inquiries regarding double-byte (DBCS) information, contact the IBM Intellectual Property Department in your country or send inquiries, in writing, to:

IBM World Trade Asia Corporation  
Licensing 2-31 Roppongi 3-chome, Minato-ku  
Tokyo 106-0032, Japan

**The following paragraph does not apply to the United Kingdom or any other country where such provisions are inconsistent with local law:** INTERNATIONAL BUSINESS MACHINES CORPORATION PROVIDES THIS PUBLICATION "AS IS" WITHOUT WARRANTY OF ANY KIND, EITHER EXPRESS OR IMPLIED, INCLUDING, BUT NOT LIMITED TO, THE IMPLIED WARRANTIES OF NON-INFRINGEMENT, MERCHANTABILITY OR FITNESS FOR A PARTICULAR PURPOSE. Some states do not allow disclaimer of express or implied warranties in certain transactions, therefore, this statement may not apply to you.

This information could include technical inaccuracies or typographical errors. Changes are periodically made to the information herein; these changes will be incorporated in new editions of the publication. IBM may make improvements and/or changes in the product(s) and/or the program(s) described in this publication at any time without notice.

Any references in this information to non-IBM Web sites are provided for convenience only and do not in any manner serve as an endorsement of those Web sites. The materials at those Web sites are not part of the materials for this IBM product and use of those Web sites is at your own risk.

IBM may use or distribute any of the information you supply in any way it believes appropriate without incurring any obligation to you.

Licensees of this program who wish to have information about it for the purpose of enabling: (i) the exchange of information between independently created programs and other programs (including this one) and (ii) the mutual use of the information which has been exchanged, should contact:

IBM Corporation  
Software Interoperability Coordinator, Department 49XA  
3605 Highway 52 N  
Rochester, MN 55901  
U.S.A.

Such information may be available, subject to appropriate terms and conditions, including in some cases, payment of a fee.

The licensed program described in this information and all licensed material available for it are provided by IBM under terms of the IBM Customer Agreement, IBM International Program License Agreement, or any equivalent agreement between us.

Any performance data contained herein was determined in a controlled environment. Therefore, the results obtained in other operating environments may vary significantly. Some measurements may have been made on development-level systems and there is no guarantee that these measurements will be the same on generally available systems. Furthermore, some measurements may have been estimated through extrapolation. Actual results may vary. Users of this document should verify the applicable data for their specific environment.

Information concerning non-IBM products was obtained from the suppliers of those products, their published announcements or other publicly available sources. IBM has not tested those products and cannot confirm the accuracy of performance, compatibility or any other claims related to non-IBM products. Questions on the capabilities of non-IBM products should be addressed to the suppliers of those products.

All statements regarding IBM's future direction or intent are subject to change or withdrawal without notice, and represent goals and objectives only.

This information contains examples of data and reports used in daily business operations. To illustrate them as completely as possible, the examples include the names of individuals, companies, brands, and products. All of these names are fictitious and any similarity to the names and addresses used by an actual business enterprise is entirely coincidental.

#### COPYRIGHT LICENSE:

This information contains sample application programs in source language, which illustrate programming techniques on various operating platforms. You may copy, modify, and distribute these sample programs in any form without payment to IBM, for the purposes of developing, using, marketing or distributing application programs conforming to the application programming interface for the operating platform for which the sample programs are written. These examples have not been thoroughly tested under all conditions. IBM, therefore, cannot guarantee or imply reliability, serviceability, or function of these programs.

If you are viewing this information softcopy, the photographs and color illustrations may not appear.

---

## Programming interface information

Programming interface information, if provided, is intended to help you create application software for use with this program.

However, this information may also contain diagnosis, modification, and tuning information. Diagnosis, modification and tuning information is provided to help you debug your application software.

**Important:** Do not use this diagnosis, modification, and tuning information as a programming interface because it is subject to change.



---

## Trademarks

IBM, the IBM logo, and [ibm.com](http://ibm.com) are trademarks or registered trademarks of International Business Machines Corporation in the United States, other countries, or both. If these and other IBM trademarked terms are marked on their first occurrence in this information with a trademark symbol (® or ™), these symbols indicate U.S. registered or common law trademarks owned by IBM at the time this information was published. Such trademarks may also be registered or common law trademarks in other countries. A current list of IBM trademarks is available on the Web at Copyright and trademark information ([www.ibm.com/legal/copytrade.shtml](http://www.ibm.com/legal/copytrade.shtml)).





---

## Sending your comments to IBM

If you especially like or dislike anything about this book, please use one of the methods listed below to send your comments to IBM.

Feel free to comment on what you regard as specific errors or omissions, and on the accuracy, organization, subject matter, or completeness of this book.

Please limit your comments to the information in this book and the way in which the information is presented.

**To make comments about the functions of IBM App Connect, you can ask questions in the IBM App Connect forum on dWAnswers. Alternatively, talk to your IBM representative or to your IBM authorized remarketer.**

When you send comments to IBM, you grant IBM a nonexclusive right to use or distribute your comments in any way it believes appropriate, without incurring any obligation to you.

You can send your comments to IBM in any of the following ways:

- By mail, to this address:

Hybrid Integration Docs (MP095)  
IBM United Kingdom Laboratories  
Hursley Park  
WINCHESTER,  
Hampshire  
SO21 2JN  
United Kingdom

- By email: [HIPDocs@uk.ibm.com](mailto:HIPDocs@uk.ibm.com)

Whichever method you use, ensure that you include details that help identify what you are commenting on:

- The publication title
- The topic to which your comment applies
- Some contact details, like your name and email, if you want a response.







Printed in USA