

IBM Integration Designer  
Version 8 Release 5

*Hello World for WebSphere DataPower  
Appliance*

**IBM**

**Note**

Before using this information and the product it supports, read the information in Notices.

---

# Contents

## Chapter 1. Hello World for Datapower . . . 1

Overview . . . . . 1

## Chapter 2. Build it yourself . . . . . 3

Set the DataPower Capability . . . . . 3

Create a DataPower library . . . . . 4

Create business objects . . . . . 4

Create the XML map . . . . . 6

## Chapter 3. Run the sample . . . . . 11

Transfer files to the DataPower Appliance . . . . . 11

Create an XML firewall service . . . . . 13  
Test the service in Integration Designer . . . . . 16

## Chapter 4. Import . . . . . 21

Notices . . . . . 23

Terms of use . . . . . 27



---

## Chapter 1. Hello World for Datapower

### Advanced

This sample shows you how to use IBM Integration Designer to create a map for an XML Firewall. You also learn how to transfer the files that you created to the DataPower appliance, and test the service.

In the sample, you learn how to complete the following activities:

- Enable DataPower function in Integration Designer.
- Create a DataPower library.
- Create business objects.
- Create a simple XML map.
- Transfer files to a DataPower Appliance.
- Create an XML firewall service..
- Test the service from Integration Designer.

### Prerequisite:

To run this sample, you must have access to a WebSphere DataPower Appliance.

---

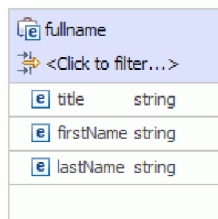
## Overview

### Advanced

In this sample, your goal is to create two simple business objects as input and output, and to map the input business object to the output business object by using an XML map. You then transfer the files that you created to a DataPower appliance and create and test an XML firewall service.

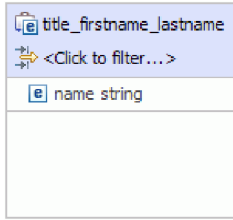
In this sample, you will map an input business object called **fullname** to an output business object called **title\_firstname\_lastname** by using an XML map.

The input business object **fullname** has three fields of type string, as shown below:



fullname	
<Click to filter...>	
title	string
firstName	string
lastName	string

The output business object **title\_firstname\_lastname** has a single field **name** of type string, as shown below:



Your goal is to take input data from the three fields of **fullname**, concatenate the strings, and populate the resulting string in the name field of **title\_firstname\_lastname**.

---

## Chapter 2. Build it yourself

### Advanced

You can use the Business Object editor and the XML map editor in IBM Integration Designer to build the sample.

To build the sample, you will complete the following steps:

1. Set the DataPower capability.
2. Create a DataPower library.
3. Create the input and output business objects.
4. Map the business objects.
5. Transfer the XML map to a WebSphere DataPower Appliance.
6. Create an XML firewall service on a WebSphere DataPower Appliance.
7. Test the service using the Generic Service Client in Integration Designer.

---

### Set the DataPower Capability

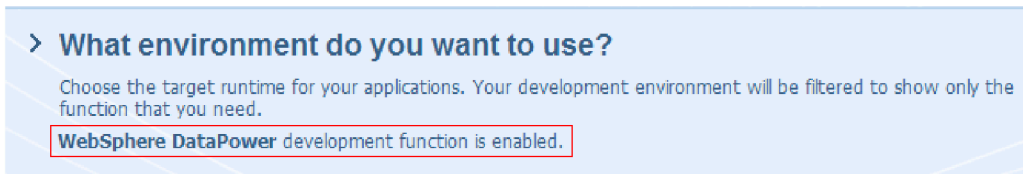
#### Advanced

Integration Designer is the development environment for many different runtimes. If all of the tools are shown the business integration view can get cluttered. In order to make it easy for users to find the tools that they need, Integration Designer provides a filtering function known as capabilities.

With capabilities, you can choose to hide the tools that you do not use. At any time, you can choose to show those tools again. To use tools for the DataPower Appliance, you must enable the DataPower capability.

To enable the DataPower capability follow these steps:

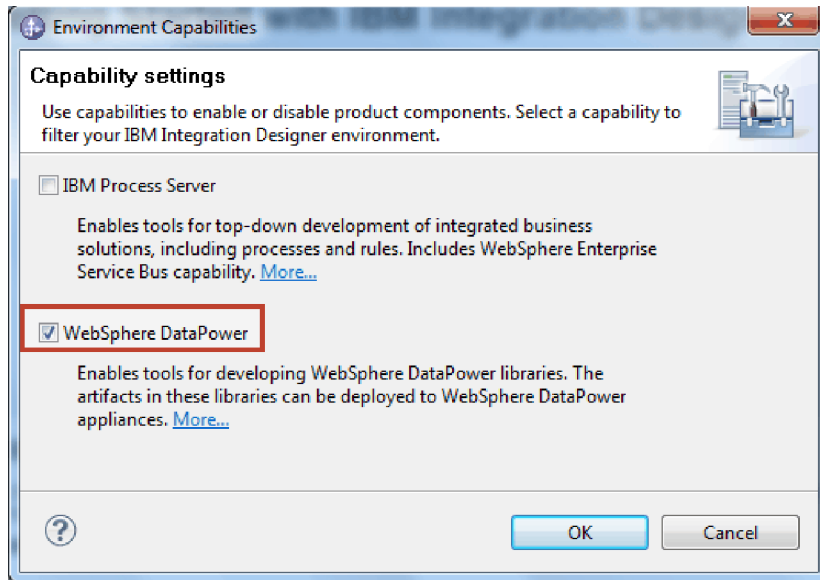
1. Go to the Getting Started page by **clicking Help > Getting Started with IBM® Integration Designer**.
2. If the section **What environment do you want to use?** shows that WebSphere DataPower function is enabled as shown below, you can proceed to the next task.



3. Otherwise, click the **Change Environment** button.

**Change Environment**

4. In the Environment Capabilities window, select the **WebSphere DataPower** option.



5. Click OK.

---

## Create a DataPower library

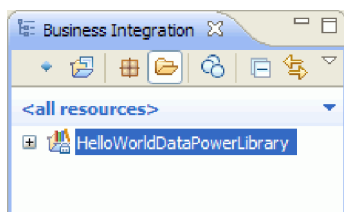
Advanced

You must use a special type of library called a **DataPower library** to create and store artifacts for deployment to the DataPower Appliance.

To create a DataPower library, follow these steps:

1. Click **File > New > Project**.
2. In the list of projects, select **DataPower Library** and click **Next**.
3. Name the library HelloWorldDataPowerLibrary.
4. Click **Finish**.

The library appears in the Business Integration view.



---

## Create business objects

Advanced

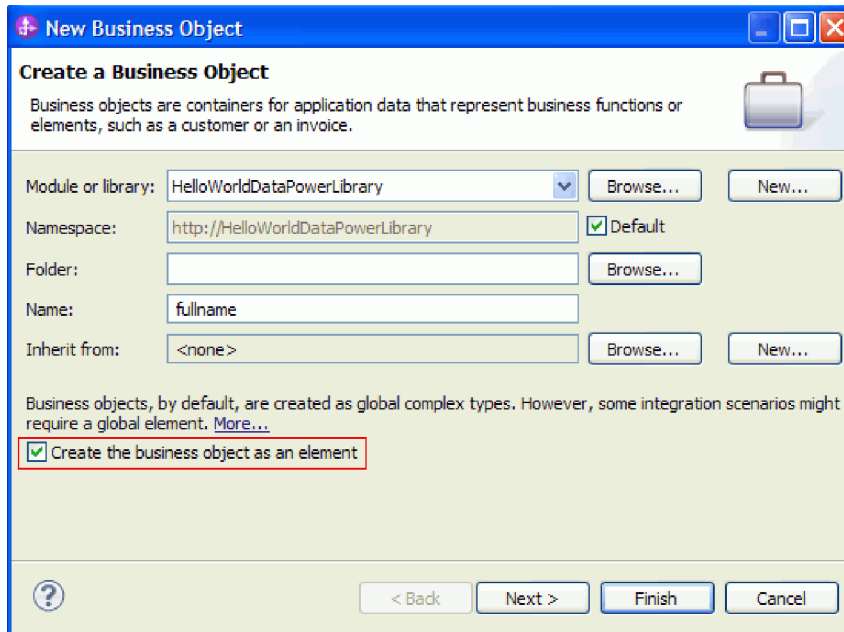
A business object is a container for application data, such as a customer or an invoice. The underlying structure of a business object is an XML schema definition (XSD).

If you want to use existing XSDs you can import them into the workspace using **File > Import**. Business objects are automatically created for the XSDs and you can map them in the XML map editor. In this sample, you create the business objects.

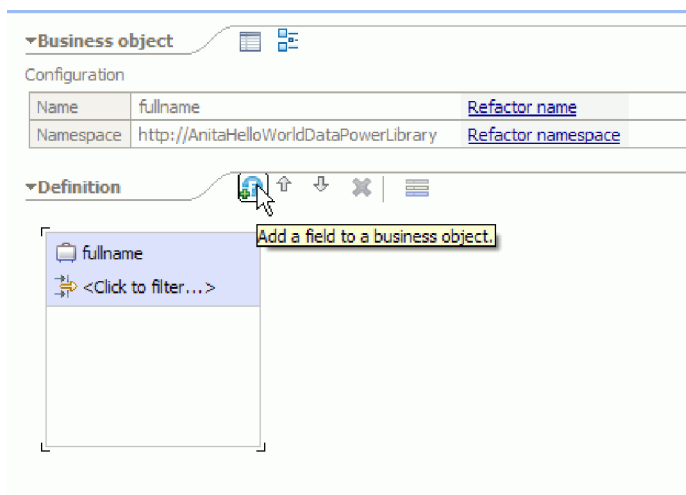


To create the business objects for this sample, follow these steps:

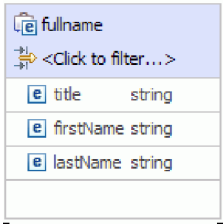
1. In the Business Integration view, within the **HelloWorldDataPowerLibrary**, right-click the **Data** category and select **New > Business Object**. The New Business Object wizard opens.
2. In the **Name** field, enter full name.
3. Select the option **Create the business object as an element**.



4. Click **Finish**. The Business Object editor opens.
5. Add a source business object by clicking the **Add a field to a business object** icon in the local toolbar (or right-click the **fullname** box and select **Add Field**):



6. Type over the generated field's name of **field1** and replace it with **title**. If the name is not selected, then first click to select it.
7. Repeat the previous step to create two more fields; one named **firstName** and the other named **lastName**. The final business object should look like this:



**Optional:** Select one of the **string** cells in the **Type** column. A list of types appears. Although you only need fields of type **string** for this sample, this is where you can specify other types. Press the **Esc** key to close the list.

**Optional:** Select a field and look at the **Properties** view below the editor. Although you do not need to set any of these fields for this sample, this is where you can specify certain properties for fields, such as specifying field repetition or maximum length.

8. Press **Ctrl-S** to save your work, and then close the business object editor.

**Optional:** Under the covers, you have just created a new XSD or XML schema file with a complex type in it. If you are curious, you can see the file by right-clicking the FullName business object and selecting **Open With > XML Schema Editor**, then choosing the **Source** tab.

9. Repeat the procedure starting with Step 1 to create another business object named `title_firstname_lastname`.
10. Add a single field of type string to the business object and call the field name.
11. Save and close the business object editor.

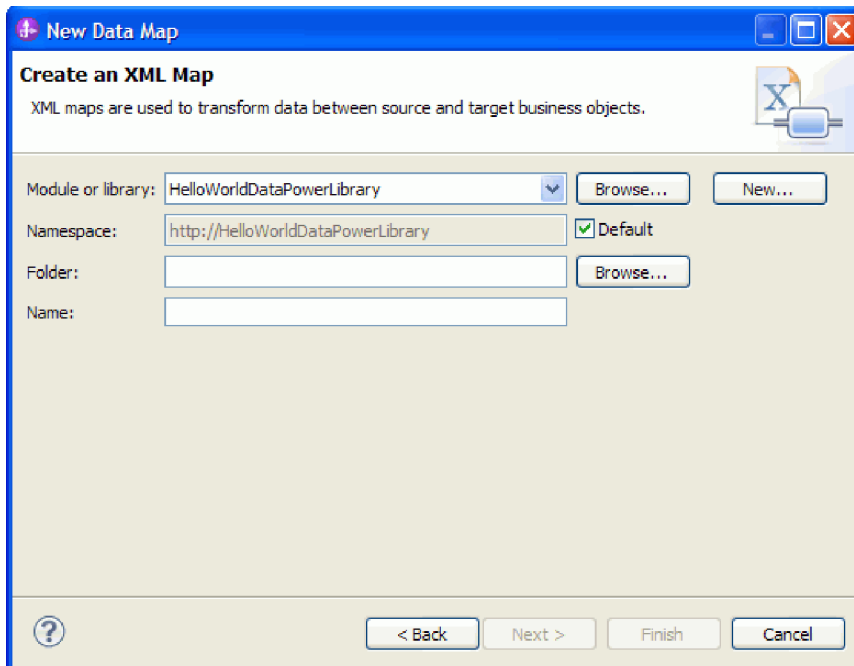
---

## Create the XML map

### Advanced

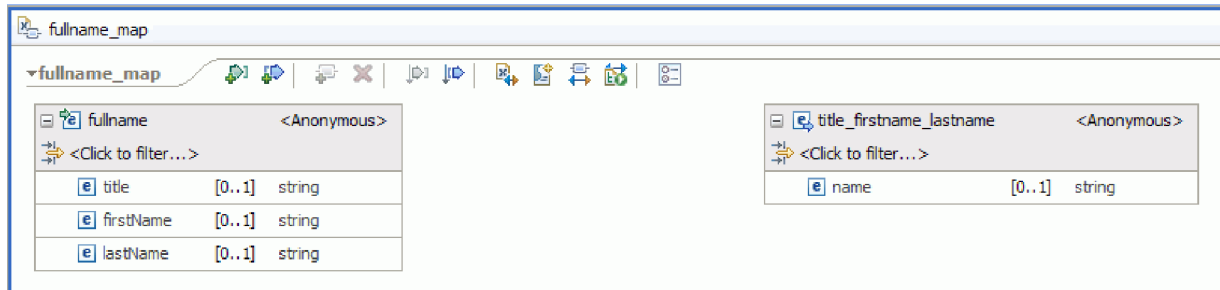
Map the source business object **fullname** to the target business object **title\_firstname\_lastname**. When you save the map, an XSL file is generated.

1. In the Business Integration view, select HelloWorldDataPowerLibrary. Right-click and select **New > Data Map**. The New Data Map wizard opens showing the **Create an XML Map** page.

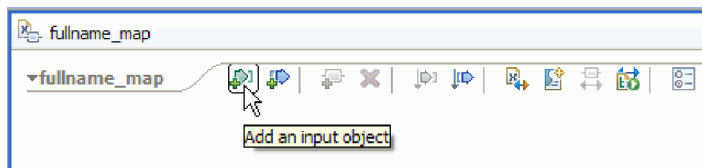


- In the **Name** field, enter `fullname_map` and click **Next**. The Select Input and Output Business Objects window opens.
- Add the input business object by clicking the **Add** button. The Data Type Selection window opens.
- Type **fullname** in the entry field.
- Similarly add the output business object **title\_firstname\_lastname**. Click **Finish**.

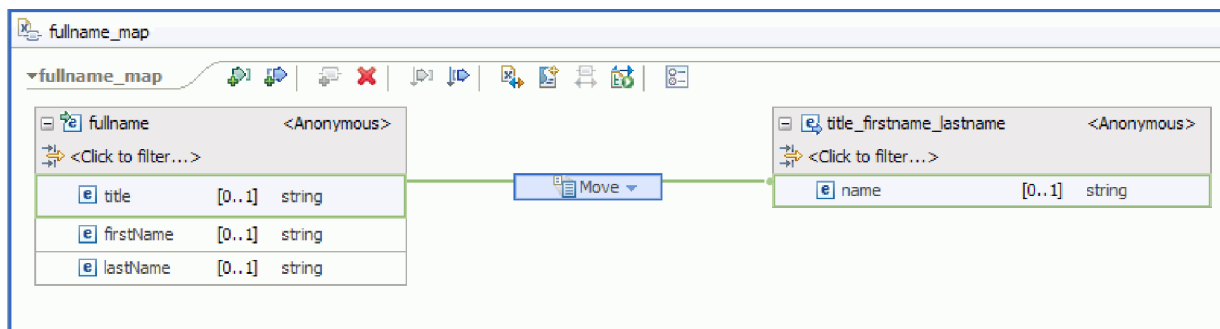
The XML Map editor opens, showing the input business object on the left side of the editor, and the output business object on the right:



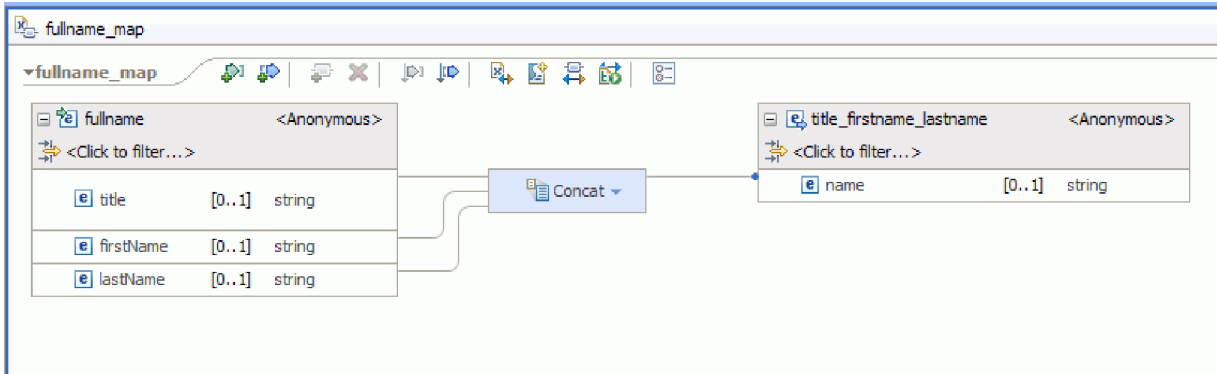
You can also add input and output objects by using the icons at the top of the XML Map editor, as shown below:



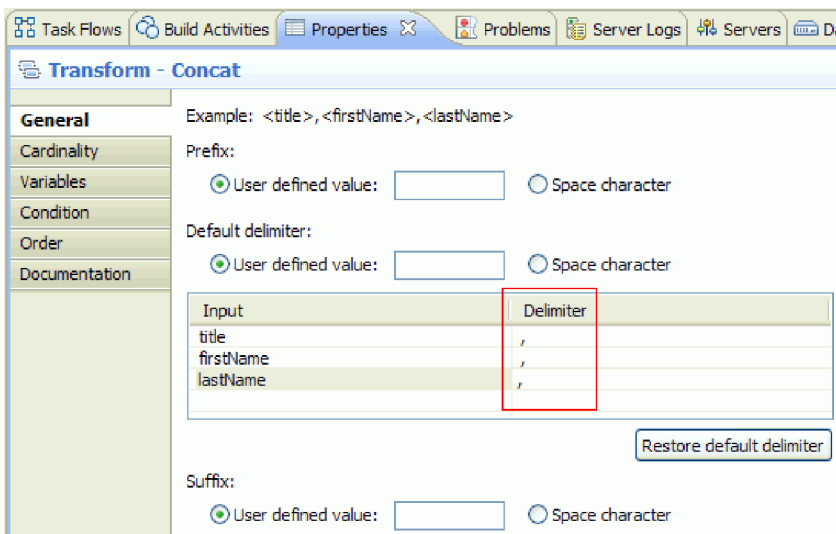
- Wire the **title** element from **fullname** to the **name** element of **title\_firstname\_lastname** by dragging the cursor from **title** to **name**. This action creates a mapping with the default transform **Move** between the two elements:



- Wire **firstName** to the **Move** transform in the middle.
- In the Connection Selection Helper window, choose to create a primary transform. This changes the **Move** transform to a **Concat** transform.
- Create another primary connection between **lastName** and **Concat**. The map is complete. The values of the elements **title**, **firstName**, and **lastName** will be input to the **Concat** transform, where the strings will be concatenated into a single result. The result will then be put into the output element **name**.



10. Optional: You can set properties to change the order in which the strings are concatenated, or to add delimiters. Right-click **Concat** and select **Show In > Properties View**. For example, if you want commas between the input strings you can set the delimiter property as shown below:



11. Optional: The XML map editor provides a number of transforms and functions, including XPath, EXSLT and DataPower functions. To view the transforms and functions that are available, click the downward arrow in the transform box.

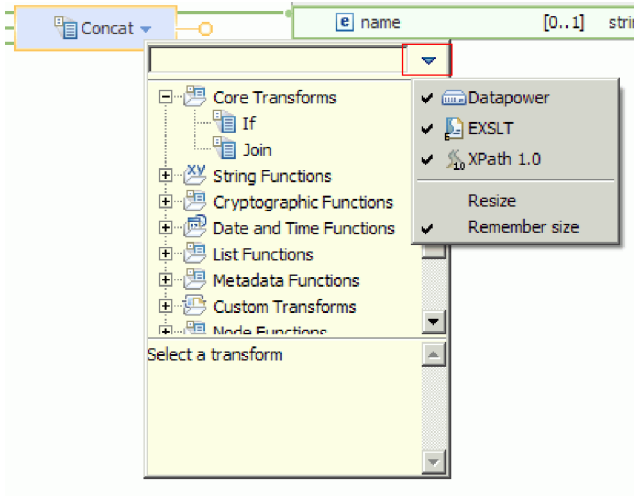


12. Optional: By default, the DataPower function set is enabled when you create a map in a DataPower library. You can choose to filter the function sets that you want to work with. To enable or disable function sets:

- a. Click the arrow in the transform box.



- b. In the list of available transforms, click the arrow on the upper right corner to view the available function sets.



- c. Click the function set you want to show or hide.



---

## Chapter 3. Run the sample

### Advanced

After you have finished building the sample, you can test and run it.

To run the sample, complete the following steps:


- Transfer files to the DataPower appliance.
- Create an XML Firewall service and create a style policy for the service.
- Test the service.

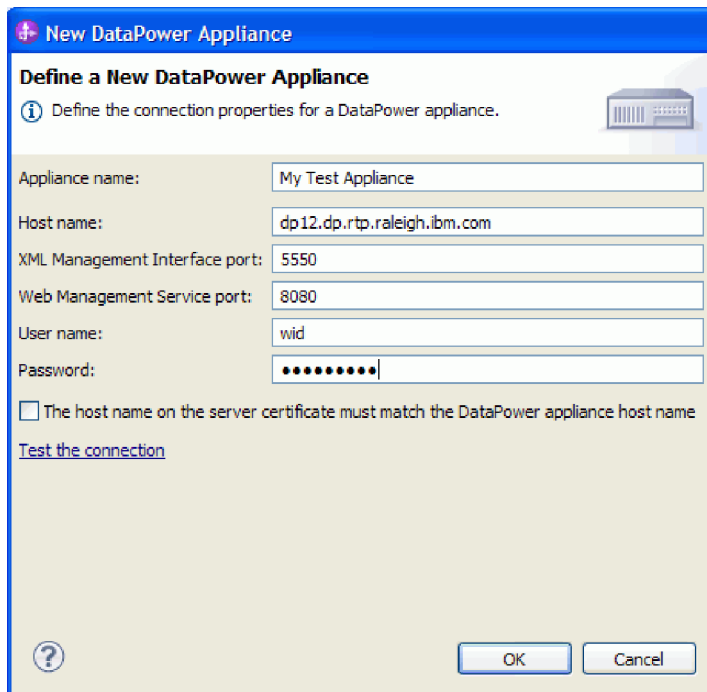
---

## Transfer files to the DataPower Appliance

### Advanced



Configure a DataPower appliance and transfer files to it.

1. Switch to the DataPower view, which is typically below the editor area. If you do not see the view, you can launch it from **Window > Show View > DataPower Appliances**. The DataPower appliances view opens.
2. In the DataPower Appliances view, click **New DataPower Appliance...**
3. In the New DataPower Appliance window, enter your credentials. For a detailed description of each of the fields, click the information icon 



**New DataPower Appliance**

**Define a New DataPower Appliance**

 Define the connection properties for a DataPower appliance. 

Appliance name:

Host name:

XML Management Interface port:


Web Management Service port:

User name:

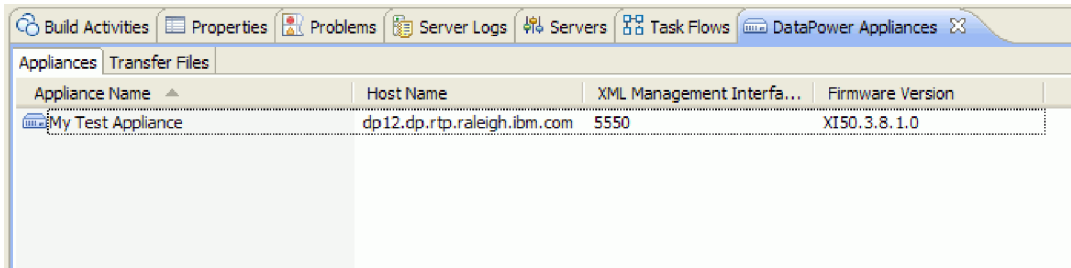
Password:

The host name on the server certificate must match the DataPower appliance host name

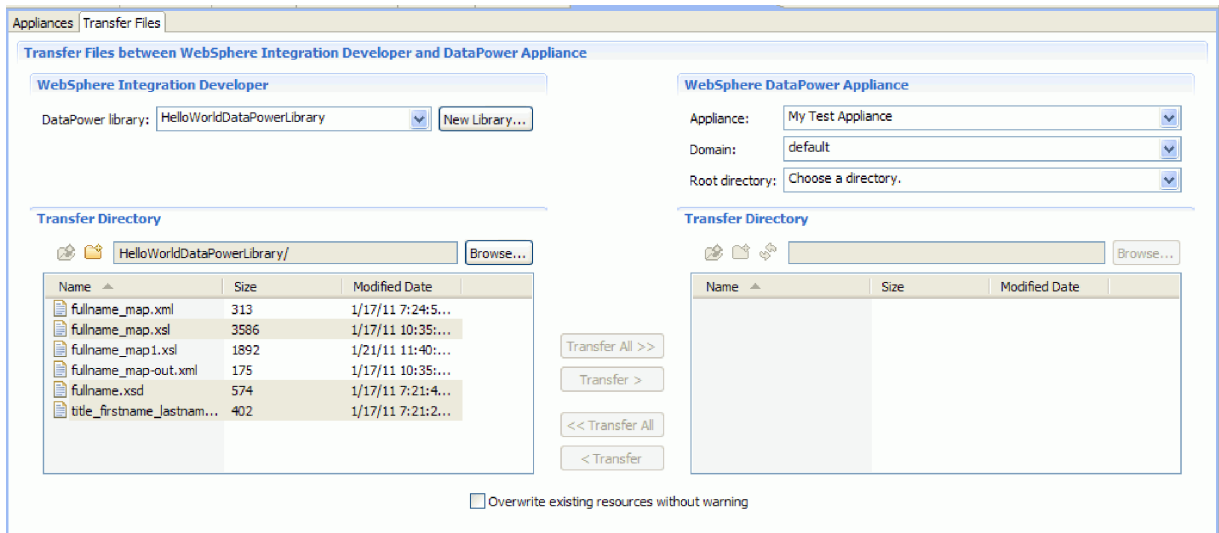
[Test the connection](#)



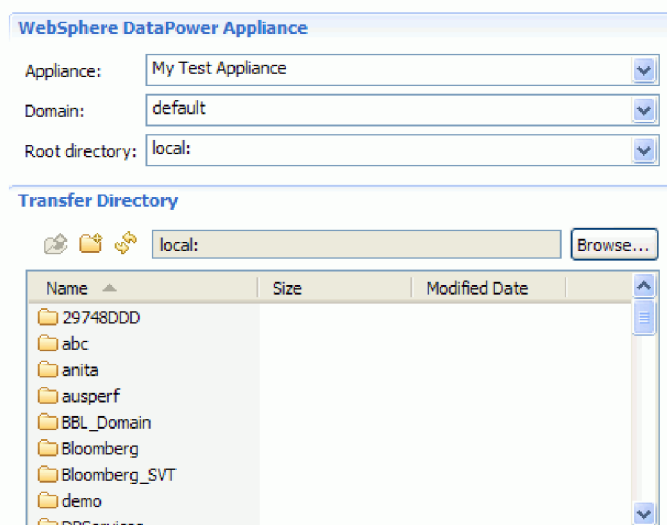
4. Optional: Click **Test the connection** to make sure the connection is working.
5. Click **OK**. An entry for the connection is shown in the Appliances tab:



- Switch to the **Transfer Files** tab. The left side of the pane shows the files in Integration Designer, and the right side shows the files on the appliance.



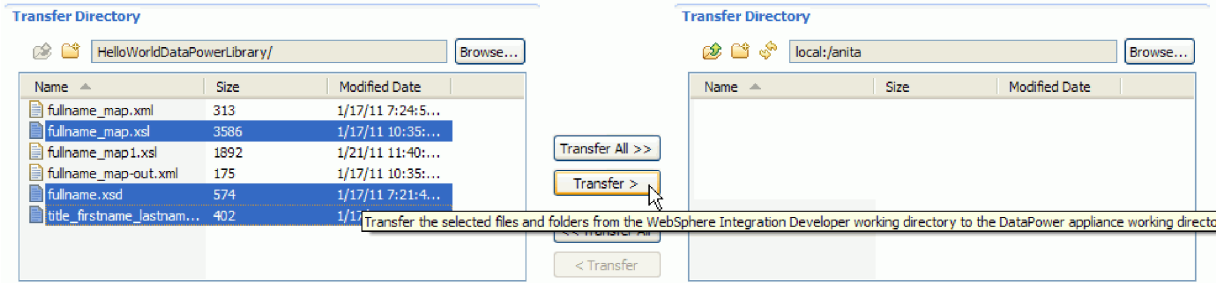
- In the WebSphere DataPower Appliance section on the right, select **local:** as the root directory.
- The directory list from the appliance will be loaded into the transfer directory list.



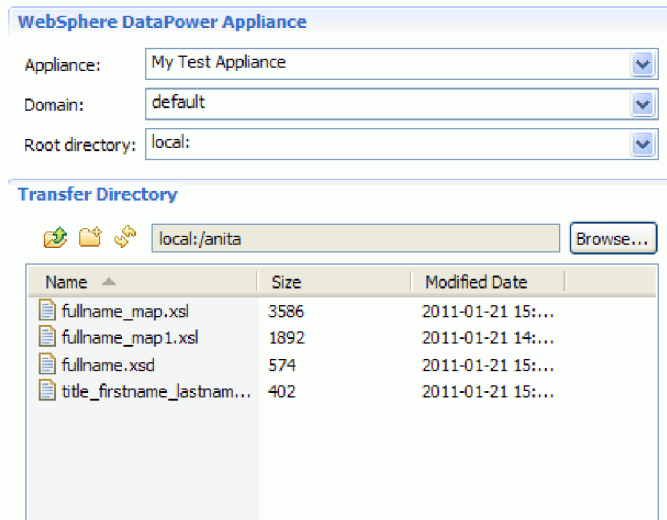
- In the appliance's transfer directory list, navigate to the directory in which you want to transfer files, or create a new one.
- From the list of files in Integration Designer, select the ones that you want to transfer, which are `fullname_map.xml`, `fullname.xsd` and `title_firstname_lastname.xsd`. **Click Transfer.**

**12** Integration Designer: Hello World for WebSphere DataPower Appliance





11. When the transfer is complete, you will see the transferred files listed in the target directory.

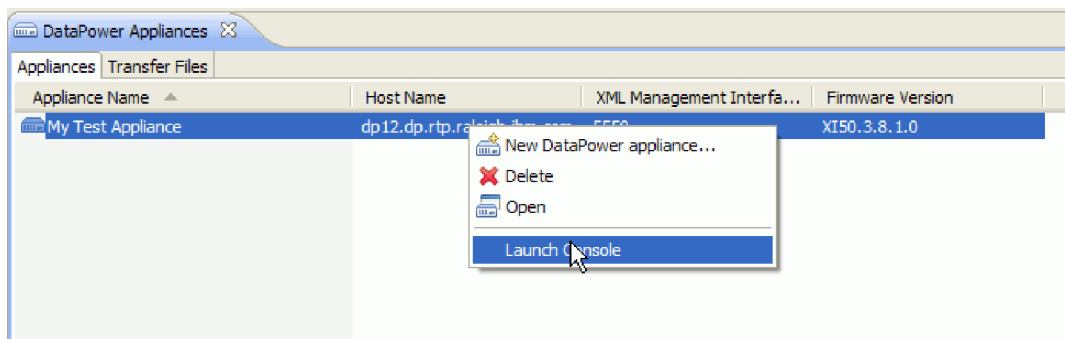


## Create an XML firewall service

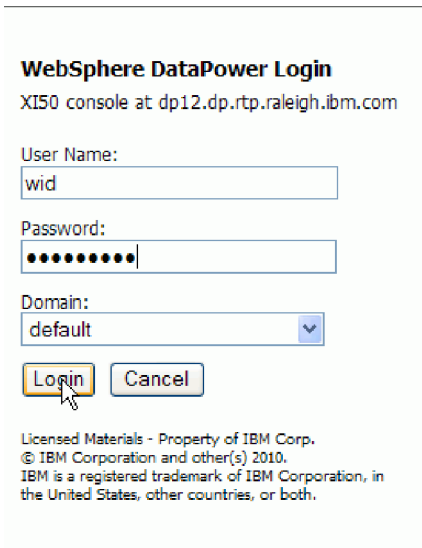
### Advanced

Launch the DataPower console and create an XML firewall service. Then create a style policy for the service.

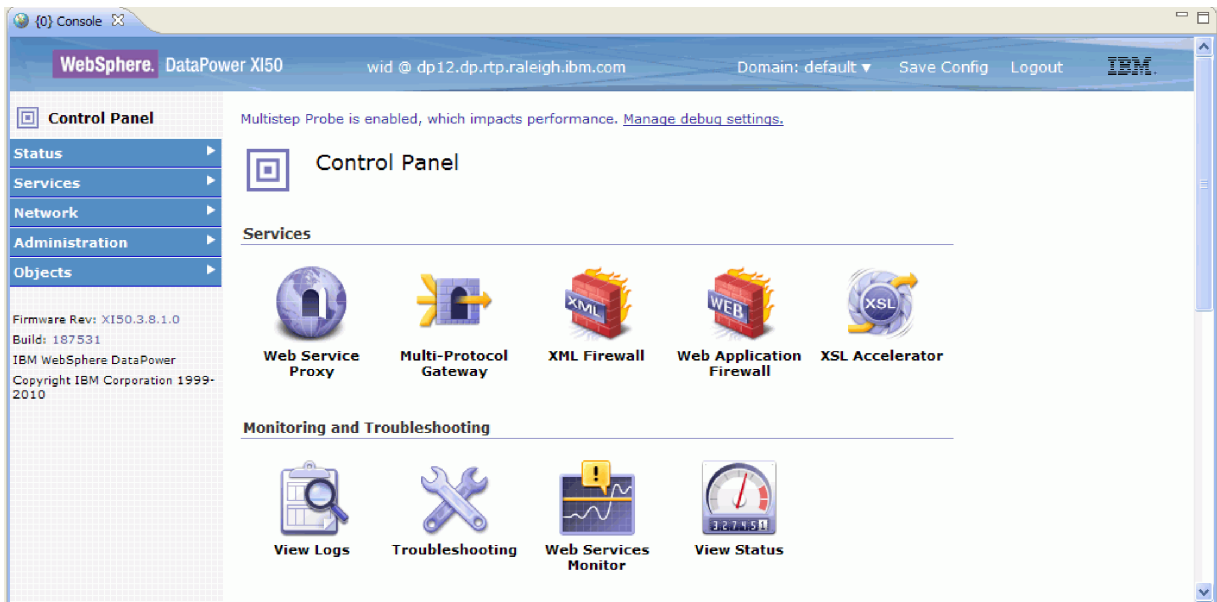
1. Switch to **Appliances** tab of the **DataPower Appliance** view.
2. Select the appliance that you created earlier, right-click, and select **Launch Console**.



3. If you are prompted by a security alert, click **Yes** to proceed.
4. At the WebSphere DataPower login prompt, provide a userid and password and click **Login**.



The WebSphere DataPower console opens showing the control panel.



5. Configure a pass-thru XML firewall with the following properties:

Option	Description
Firewall Name	SampleHelloWorldDataFirewall
Firewall type	loopback-proxy
Request type	XML <b>Note:</b> You may need to edit the XML Firewall after you create it, in order to set the request type to XML.

The following image shows the configured XML firewall.

## Configure XML Firewall

General | Advanced | Stylesheet Params | Headers | Monitors | XML Threat Protection

Apply | Cancel | Delete Clone | Export | View Log | View Status | Show | Probe | Validate Conformance | Help

XML Firewall Service status: [up]

### General Configuration

<b>Firewall Name</b> <input type="text" value="SampleHelloWorldDataFirewall"/> *	<b>XML Manager</b> <input type="text" value="default"/> + ... *
<b>Summary</b> <input type="text" value="an example XML Firewall Service"/>	<b>Firewall Policy</b> <input type="text" value="SampleHelloWorldDataFirewall"/> + ... *
<b>Firewall Type</b> <input type="text" value="Loopback"/> *	<b>URL Rewrite Policy</b> <input type="text" value="(none)"/> + ...

**Back End**

With a loopback proxy back end type, there is no back end server; the device is responding to the client.

With this type, there is no back end server which needs credentials from the device.

With this type, the response type is always "unprocessed".

**Front End**

**Device Address**  
  \*

**Device Port**  
 \*

**SSL Server Crypto Profile**  
 + ...

**Request Type**

6. Configure a style policy and a rule for the XML service. Create a new rule with the direction **Client to Server** and the following actions in order from client to server: validate, transform and validate.

**Policy:**

Policy Name:  \* [ up]

[Export](#) | [View Log](#) | [View Status](#) |

---

**Rule:**

Rule Name:  Rule Direction:

**Create rule: Click New, drag action icons onto line. Edit rule: Click on rule, double-click on action**

Filter Sign Verify Validate Encrypt Decrypt Transform Route AAA Results Advanced

CLIENT ORIGIN SERVER

7. Configure the first **Validate** action with the following properties:

Property	Value
Input	INPUT
Schema Validation Method	Validate Document via schema URL
Schema URL	A path to the library that you uploaded to DataPower (for example local:///anita); <b>fullname.xsd</b> .
SOAP Validation	body
Asynchronous	off

8. Configure the Transform action with the following properties:

Property	Value
Input	auto
Document Processing Instructions	Use XSLT specified in this action
Processing Control File	A path to the library that you uploaded to DataPower (for example local:///anita); <b>fullname_map.xsl</b> .
URL Rewrite Policy	none
Asynchronous	off
Output	auto

9. Configure the last Validate action with the following properties:

Property	Value
Input	auto
Document Processing Instructions	Validate Document via schema URL
Processing Control File	A path to the library that you uploaded to DataPower (for example local:///anita); <b>title_firstname_lastname.xsd</b> .
SOAP Validation	Body
Asynchronous	off
Output	OUTPUT

10. Apply the policy.

11. Verify that the policy and the firewall are up and running.

---

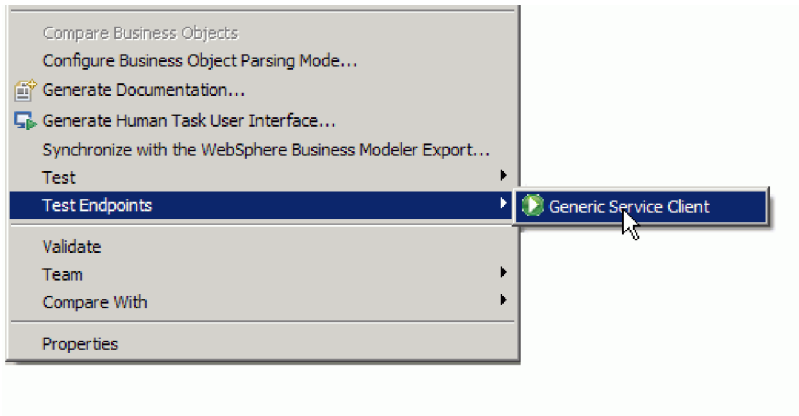
## Test the service in Integration Designer

### Advanced


After you create the XML Firewall service and policy, you can test the service in Integration Designer using the Generic Service Client.

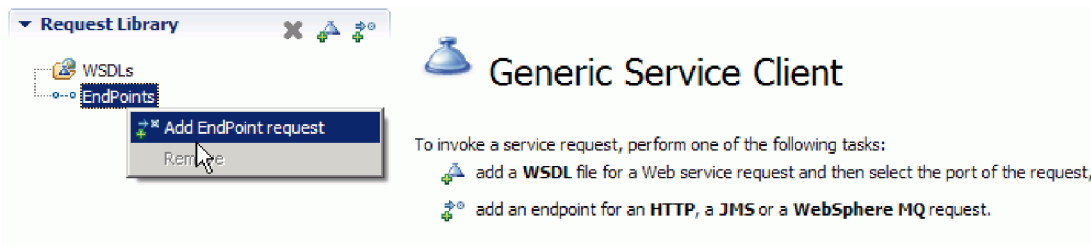
To test the service using the Generic Service Client, follow these steps:

1. Right click **HelloWorldDataPowerLibrary** and select **Test Endpoints > Generic Service Client**.

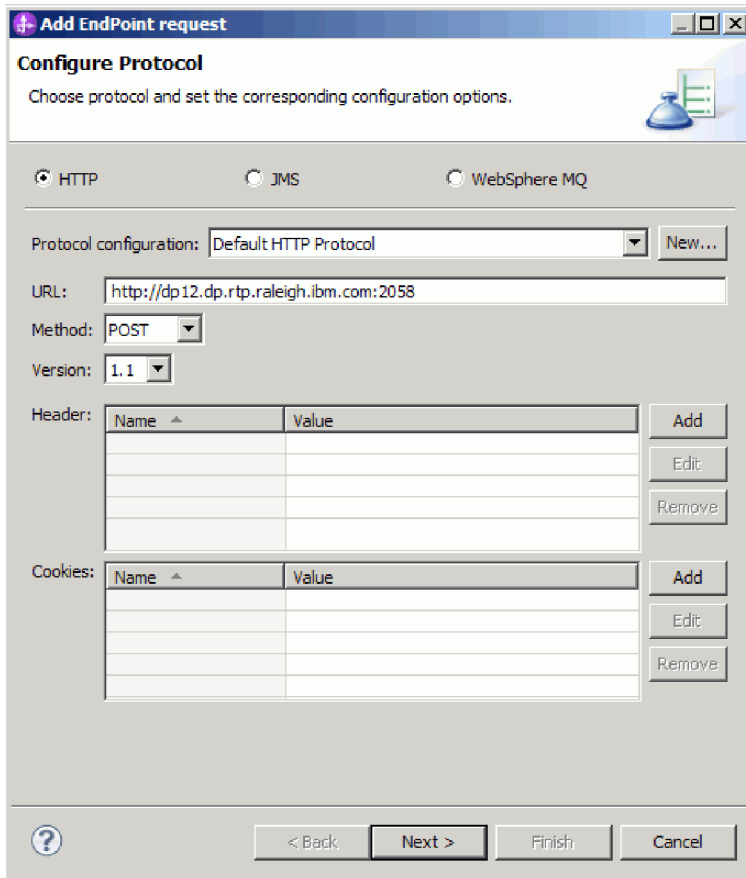


**Note:** If you do not see the **Test Endpoints** option, enable the IBM Process Server capability by following these steps:

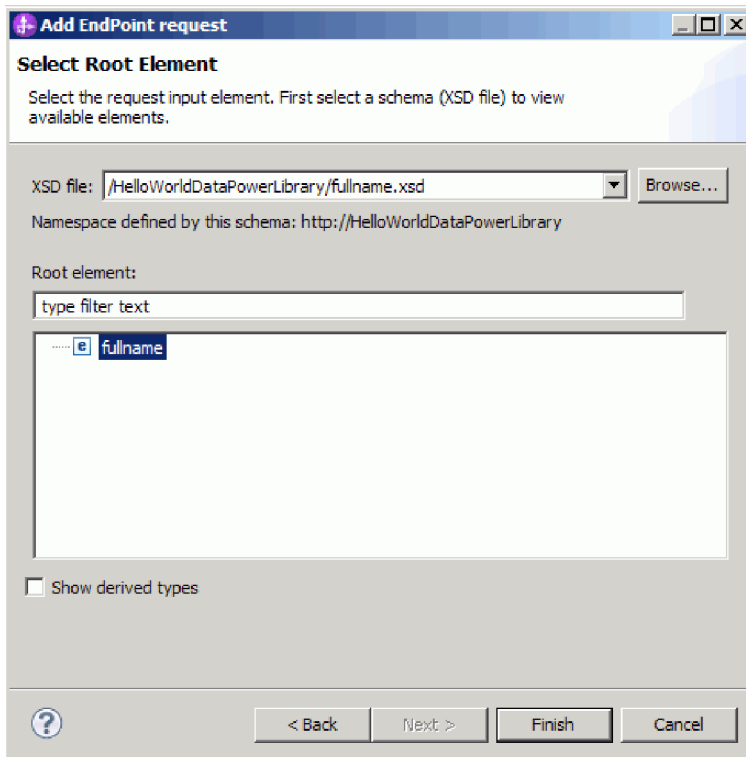
- a. Launch the Getting Started page from **Help > Getting Started > IBM Integration Designer**.
  - b. Click the **Change Environment** button. 
  - c. In the Environment Capabilities window, select IBM Process Server.
  - d. Click OK.
2. In the Generic Service Client page, add an endpoint request by selecting **Endpoints > Add EndPoint request**



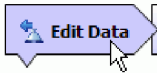
3. In the Configure Protocol window, enter the URL of the service that is running on the DataPower appliance. Click **Next**.



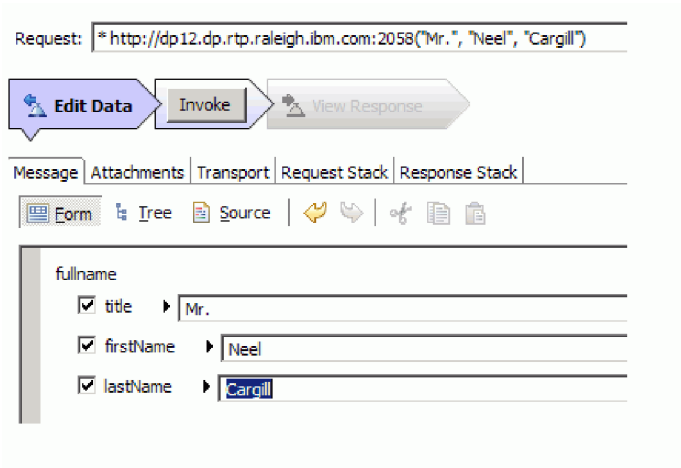
4. Select **fullname** as the root element of the request, and click **Finish**.



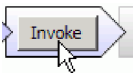
5. Click the edit data button.



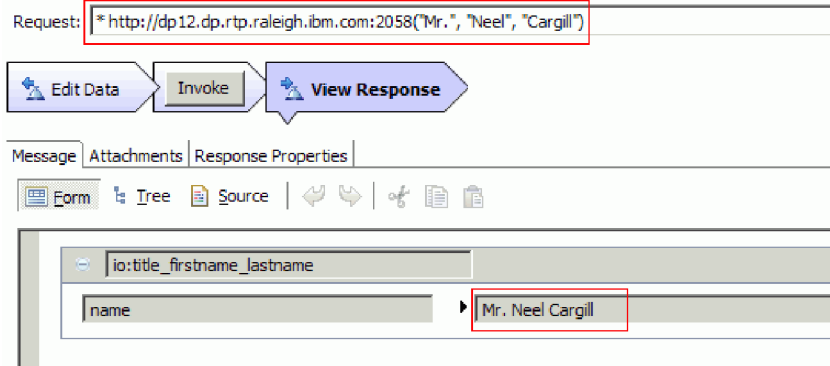
6. In the message form, select title, firstName and lastName and enter their values, as shown below:



7. Click the **Invoke** button.



8. The concatenated message is returned in the response, as shown below:







---

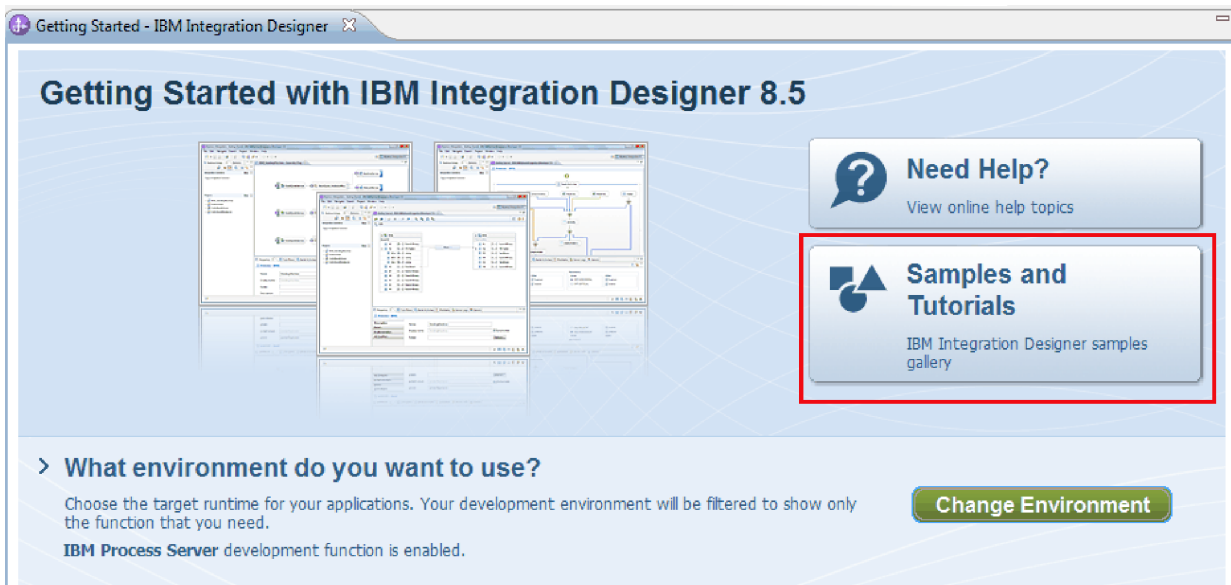
## Chapter 4. Import

### Advanced

You can either import a complete ready-made version of the sample, or you can build the sample yourself.

To import the sample:

1. Open IBM Integration Designer.
2. If the Getting Started page is not open in the workspace, select **Help > Getting Started > IBM Integration Designer**. The Getting Started page opens.
3. On the **Getting Started - IBM Integration Designer** page, select the **Go to Samples and Tutorials** link, as shown in the following figure:



The Samples and Tutorials page opens.

4. Under the **Hello World for WebSphere DataPower** section, click the **Import** link.
5. You will see the project HelloWorldDataPowerLibrary in the Business Integration view.

Instructions for running the sample are found in the topic "Run the sample".



---

## Notices

U.S. Government Users Restricted Rights - Use, duplication or disclosure restricted by GSA ADP Schedule Contract with IBM Corp.

This information was developed for products and services offered in the U.S.A. IBM may not offer the products, services, or features discussed in this documentation in other countries. Consult your local IBM representative for information on the products and services currently available in your area. Any reference to an IBM® product, program, or service is not intended to state or imply that only that IBM product, program, or service may be used. Any functionally equivalent product, program, or service that does not infringe any IBM intellectual property right may be used instead. However, it is the user's responsibility to evaluate and verify the operation of any non-IBM product, program, or service.

IBM may have patents or pending patent applications covering subject matter described in this documentation. The furnishing of this documentation does not give you any license to these patents. You can send license inquiries, in writing, to:

IBM Director of Licensing  
IBM Corporation  
North Castle Drive  
Armonk, NY 10504-1785  
U.S.A.

For license inquiries regarding double-byte (DBCS) information, contact the IBM Intellectual Property Department in your country or send inquiries, in writing, to:

IBM World Trade Asia Corporation  
Licensing  
2-31 Roppongi 3-chome, Minato-ku  
Tokyo 106, Japan

The following paragraph does not apply to the United Kingdom or any other country where such provisions are inconsistent with local law: INTERNATIONAL BUSINESS MACHINES CORPORATION PROVIDES THIS PUBLICATION "AS IS" WITHOUT WARRANTY OF ANY KIND, EITHER EXPRESS OR IMPLIED, INCLUDING, BUT NOT LIMITED TO, THE IMPLIED WARRANTIES OR CONDITIONS OF NON-INFRINGEMENT, MERCHANTABILITY OR FITNESS FOR A PARTICULAR PURPOSE. Some states do not allow disclaimer of express or implied warranties in certain transactions, therefore, this statement may not apply to you.

This information could include technical inaccuracies or typographical errors. Changes are periodically made to the information herein; these changes will be incorporated in new editions of the publication. IBM may make improvements and/or changes in the product(s) and/or the program(s) described in this publication at any time without notice.

Any references in this information to non-IBM Web sites are provided for convenience only and do not in any manner serve as an endorsement of those Web sites. The materials at those Web sites are not part of the materials for this IBM product and use of those Web sites is at your own risk.

IBM may use or distribute any of the information you supply in any way it believes appropriate without incurring any obligation to you.

Licensees of this program who wish to have information about it for the purpose of enabling: (i) the exchange of information between independently created programs and other programs (including this one) and (ii) the mutual use of the information which has been exchanged, should contact:

*Intellectual Property Dept. for IBM Integration  
Designer  
IBM Canada Ltd.  
8200 Warden Avenue  
Markham, Ontario  
L6G 1C7 Canada*

Such information may be available, subject to appropriate terms and conditions, including in some cases, payment of a fee.

The licensed program described in this documentation and all licensed material available for it are provided by IBM under terms of the IBM Customer Agreement, IBM International Program License Agreement or any equivalent agreement between us.

Any performance data contained herein was determined in a controlled environment. Therefore, the results obtained in other operating environments may vary significantly. Some measurements may have been made on development-level systems and there is no guarantee that these measurements will be the same on generally available systems. Furthermore, some measurements may have been estimated through extrapolation. Actual results may vary. Users of this document should verify the applicable data for their specific environment.

Information concerning non-IBM products was obtained from the suppliers of those products, their published announcements or other publicly available sources. IBM has not tested those products and cannot confirm the accuracy of performance, compatibility or any other claims related to non-IBM products. Questions on the capabilities of non-IBM products should be addressed to the suppliers of those products.

All statements regarding IBM's future direction or intent are subject to change or withdrawal without notice, and represent goals and objectives only.

This information contains examples of data and reports used in daily business operations. To illustrate them as completely as possible, the examples may include the names of individuals, companies, brands, and products. All of these names are fictitious and any similarity to the names and addresses used by an actual business enterprise is entirely coincidental.

#### COPYRIGHT LICENSE:

This information contains sample application programs in source language, which illustrates programming techniques on various operating platforms. You may copy, modify, and distribute these sample programs in any form without payment to IBM, for the purposes of developing, using, marketing or distributing application programs conforming to the application programming interface for the operating platform for which the sample programs are written. These examples have not been thoroughly tested under all conditions. IBM, therefore, cannot guarantee or imply reliability, serviceability, or function of these programs. You may copy, modify, and distribute these sample programs in any form without payment to IBM for the purposes of developing, using, marketing, or distributing application programs conforming to IBM's application programming interfaces.

Each copy or any portion of these sample programs or any derivative work, must include a copyright notice as follows:

© (your company name) (year). Portions of this code are derived from IBM Corp. Sample Programs. © Copyright IBM Corp. 2000, 2011. All rights reserved.

If you are viewing this information softcopy, the photographs and color illustrations may not appear.

## Programming interface information

Programming interface information is intended to help you create application software using this program.

General-use programming interfaces allow you to write application software that obtain the services of this program's tools.

However, this information may also contain diagnosis, modification, and tuning information. Diagnosis, modification and tuning information is provided to help you debug your application software.

**Warning:** Do not use this diagnosis, modification, and tuning information as a programming interface because it is subject to change.

## Trademarks and service marks

IBM, IBM Logo, WebSphere, Rational, DB2, Universal Database DB2, Tivoli, Lotus, Passport Advantage, developerWorks, Redbooks, CICS, z/OS, and IMS are trademarks or registered trademarks of International Business Machines Corporation in the United States or other countries or both.

UNIX is a registered trademark of The Open Group in the United States, other countries, or both.

Java and all Java-based trademarks and logos are trademarks or registered trademarks of Sun Microsystems, Inc. in the United States, other countries, or both.

Microsoft and Windows are trademarks or registered trademarks of Microsoft Corporation in the United States, other countries, or both.

Linux is a trademark of Linus Torvalds in the United States, other countries, or both.

Adobe is either a registered trademark or trademark of Adobe Systems Incorporated in the United States, other countries, or both.

Other company, product and service names may be trademarks or service marks of others.



---

## Terms of use

Permissions for the use of publications is granted subject to the following terms and conditions.

**Personal Use:** You may reproduce these publications for your personal, non commercial use provided that all proprietary notices are preserved. You may not distribute, display or make derivative work of these publications, or any portion thereof, without the express consent of IBM.

**Commercial Use:** You may reproduce, distribute and display these publications solely within your enterprise provided that all proprietary notices are preserved. You may not make derivative works of these publications, or reproduce, distribute or display these publications or any portion thereof outside your enterprise, without the express consent of IBM.

Except as expressly granted in this permission, no other permissions, licenses or rights are granted, either express or implied, to the publications or any information, data, software or other intellectual property contained therein.

IBM reserves the right to withdraw the permissions granted herein whenever, in its discretion, the use of the publications is detrimental to its interest or, as determined by IBM, the above instructions are not being properly followed.

You may not download, export or re-export this information except in full compliance with all applicable laws and regulations, including all United States export laws and regulations.

IBM MAKES NO GUARANTEE ABOUT THE CONTENT OF THESE PUBLICATIONS. THE PUBLICATIONS ARE PROVIDED "AS-IS" AND WITHOUT WARRANTY OF ANY KIND, EITHER EXPRESSED OR IMPLIED, INCLUDING BUT NOT LIMITED TO IMPLIED WARRANTIES OF MERCHANTABILITY AND FITNESS FOR A PARTICULAR PURPOSE.

© Copyright IBM Corporation 2005, 2012. All Rights Reserved.





---

## Readers' Comments — We'd Like to Hear from You

**IBM Integration Designer**  
**Hello World for WebSphere DataPower Appliance**  
**Version 8 Release 5**

We appreciate your comments about this publication. Please comment on specific errors or omissions, accuracy, organization, subject matter, or completeness of this book. The comments you send should pertain to only the information in this manual or product and the way in which the information is presented.

For technical questions and information about products and prices, please contact your IBM branch office, your IBM business partner, or your authorized remarketer.

When you send comments to IBM, you grant IBM a nonexclusive right to use or distribute your comments in any way it believes appropriate without incurring any obligation to you. IBM or any other organizations will only use the personal information that you supply to contact you about the issues that you state on this form.

Comments:

Thank you for your support.

Send your comments to the address on the reverse side of this form.

If you would like a response from IBM, please fill in the following information:

\_\_\_\_\_

Name

\_\_\_\_\_

Address

\_\_\_\_\_

Company or Organization

\_\_\_\_\_

Phone No.

\_\_\_\_\_

Email address

**Readers' Comments — We'd Like to Hear from You**



Cut or Fold  
Along Line

Fold and Tape

**Please do not staple**

Fold and Tape

PLACE  
POSTAGE  
STAMP  
HERE

IBM Canada Ltd. Laboratory  
Information Development for  
IBM Integration Designer  
8200 Warden Avenue  
Markham, Ontario  
Canada L6G 1C7

Fold and Tape

**Please do not staple**

Fold and Tape

Cut or Fold  
Along Line