

## Quick Start Guide

*Get started installing and configuring IBM Business Process Manager Advanced*

**National language version:** To obtain the Quick Start Guide in other languages, access the PDF files on the Quick Start CD.

### Product overview

IBM® Business Process Manager is a comprehensive and easy-to-use business process management platform that helps you visibly manage your business processes. It includes tools and runtime environments that help process owners and business users design, run, monitor, and optimize processes to directly improve their business processes.

### 1 Step 1: Access your software and documentation



If you downloaded your product from Passport Advantage®, follow the directions in the download document: <http://www.ibm.com/support/docview.wss?uid=swg24031879>

This product offering includes the following components:

- Quick Start CD
- IBM Business Process Manager Advanced V8.0 – including IBM Installation Manager V1.5.2, IBM WebSphere® Application Server V8.0.0.3, and IBM DB2® Express® Edition V9.7 FP4 (Microsoft Windows and Linux Intel only)
- IBM WebSphere Application Server Network Deployment V8.0 supplements – including IBM HTTP Server, IBM DMZ Secure Proxy Server, and IBM WebSphere Edge Components
- IBM DB2 Enterprise Server Edition V9.7
- IBM Tivoli® Directory Server V6.3
- IBM Rational® Application Developer for WebSphere Software V8.0.3

Some of these components are optional. For a complete list of the components that are provided for your platform, see the product package information in the IBM Business Process Manager information center at <http://pic.dhe.ibm.com/infocenter/dmndhelp/v8r0mx/index.jsp>.

For complete documentation, including installation instructions, see the IBM Business Process Manager library at <http://www.ibm.com/software/integration/business-process-manager/library/documentation>.

### 2 Step 2: Evaluate your hardware and system configuration



You can use IBM Business Process Manager in many different configurations. For more information, see *Planning for IBM Business Process Manager* in the information center. Review the product license to ensure that you have the necessary authorizations to support your topology and that you understand the usage restrictions for all software components that are included with the product.

For the system requirements, see <http://www.ibm.com/support/docview.wss?uid=swg27023005>.

### 3 Step 3: Install IBM Business Process Manager Advanced



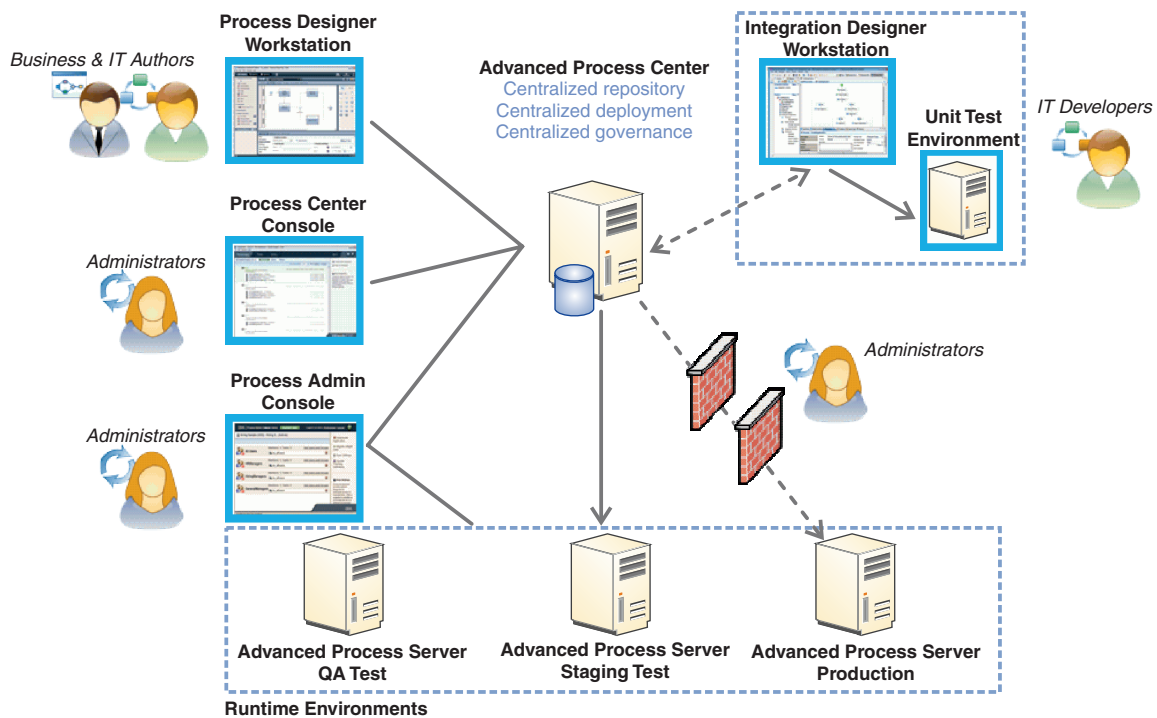
To create either a stand-alone Process Center server or Process Server profile using the DB2 Express database, complete the following steps for a typical installation:

1. Start the launchpad file from your DVD media or from where you extracted the electronic image. From the launchpad, select **using the typical installer**.
2. Select whether to **Install Process Center** or **Install Process Server**, and then click **Next**.
3. Verify the information on the next panel including the location for the installation and click **Next**.
4. Choose to install an embedded DB2 Express database. If you already have DB2 installed, you are prompted to install the product using the existing database. Click **Next**.
5. Read and accept the license agreement, and then click **Install Software** to begin your installation. While the software is installing, you can view and print information about the installation.
6. When the installation has completed, open the First Steps console.

For complex installations, select **using the custom installer** on the launchpad. IBM Installation Manager starts.

For detailed installation steps, see *Installing and configuring IBM Business Process Manager Advanced* in the information center.

The following illustration shows the IBM Business Process Manager Advanced components that are installed across multiple systems in a common topology, known as a network deployment configuration. At the center is the Advanced Process Center, where all the development activities occur. The authoring tools, the administrative consoles, and the Advanced Process Servers for testing, staging, and production are connected to the Advanced Process Center.



For more information about the components and the user role interactions, see the IBM Business Process Manager information center at <http://pic.dhe.ibm.com/infocenter/dmndhelp/v8r0mx/index.jsp>.

### More information



For additional technical resources, see the following links:

- IBM Education Assistant: <http://publib.boulder.ibm.com/infocenter/ieduasst/v1r1m0/>
- WebSphere Application Server documentation: <http://publib.boulder.ibm.com/infocenter/wasinfo/v8r0/index.jsp>
- Support information: [http://www.ibm.com/support/entry/portal/Overview/Software/WebSphere/IBM\\_Business\\_Process\\_Manager\\_Advanced](http://www.ibm.com/support/entry/portal/Overview/Software/WebSphere/IBM_Business_Process_Manager_Advanced)

IBM Business Process Manager Version 8.0 Licensed Materials - Property of IBM. © Copyright IBM Corp. 2000, 2012. U.S. Government Users Restricted Rights - Use, duplication or disclosure restricted by GSA ADP Schedule Contract with IBM Corp.

IBM, the IBM logo, ibm.com®, DB2, Express, Passport Advantage, Rational, Tivoli, and WebSphere are trademarks or registered trademarks of International Business Machines Corp., registered in many jurisdictions worldwide. Other product and service names might be trademarks of IBM or other companies. A current list of IBM trademarks is available on the web as "Copyright and trademark information" at <http://www.ibm.com/legal/copytrade.shtml>.

Intel is a trademark or registered trademark of Intel Corporation or its subsidiaries in the United States and other countries. Linux is a registered trademark of Linus Torvalds in the United States, other countries, or both. Microsoft Windows is a trademark of Microsoft Corporation in the United States, other countries, or both.

Part Number: CF3EHML

