

This module will cover the desktop installation for IBM Rational® RequisitePro® versions 7.1 and higher.

Module objectives

- The following topics are covered in this module:
 - ▶ Introduction to RequisitePro V7.1
 - ▶ Installation
- When you complete this module, you can:
 - ▶ Perform a desktop installation of RequisitePro V7.1



This presentation will cover two topics. An introduction to RequisitePro V7.1 and steps to perform a desktop installation. When you complete this module you are able to install RequisitePro V7.1 successfully.

RequisitePro V7.1 introduction

- **Differences between installing earlier versions of RequisitePro versus installing RequisitePro V7.1**
 - ▶ Different Installer
 - ▶ The GUI



RequisitePro versions before V7.1 used a different installer that only installed RequisitePro. Requisite Pro V7.1 now uses Installation Manager which can be used to install multiple packages such as RequisitePro, SoDA®, ClearQuest®, and so on. The GUI is different than what you have been used to seeing in the past but each step is outlined for you in the upcoming slides.

RequisitePro V7.1 introduction

- RequisitePro installation screen before V7.1



This is a screen capture of what the installer looks like before Requisite Pro V7.1.

RequisitePro V7.1 introduction

- RequisitePro V7.1 installation screen



This is a screen capture of what the installer for RequisitePro V7.1 looks like using Installation Manager.

Installation

- **Pre-Requisites**
- **Step by step installation**
 - ▶ Starting the installation
 - ▶ Selecting Packages
 - ▶ Disabling Anti-Virus software
 - ▶ License Agreement
 - ▶ Selecting a Package Group
 - ▶ Selecting Packages to Install (client, web, etc)
 - ▶ License Server/HTTP Port Configuration
 - ▶ Review before Installing



The next two topics will cover the pre-requisites for the RequisitePro installation and the steps to complete the installation.

Installation (continued)

■ Pre-Requisites

- ▶ Follow the link below to view the System Requirements for installing the RequisitePro client and web.

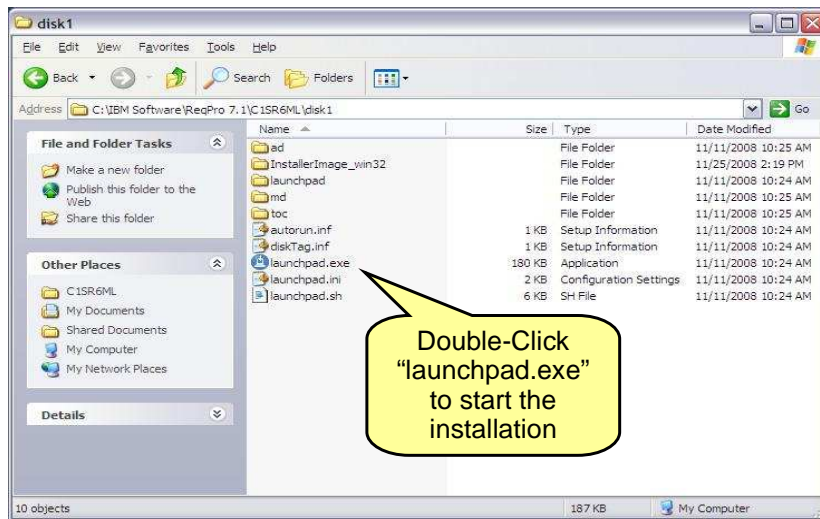
- <http://publib.boulder.ibm.com/infocenter/regpro/v7r1m0/index.jsp?topic=/com.ibm.rational.regpro.relnotes.doc/com.ibm.rational.regpro.relnotes.doc.htm>



This slide points you to the location on the IBM publication center to view the system requirements for RequisitePro V7.1.

Installation (continued)

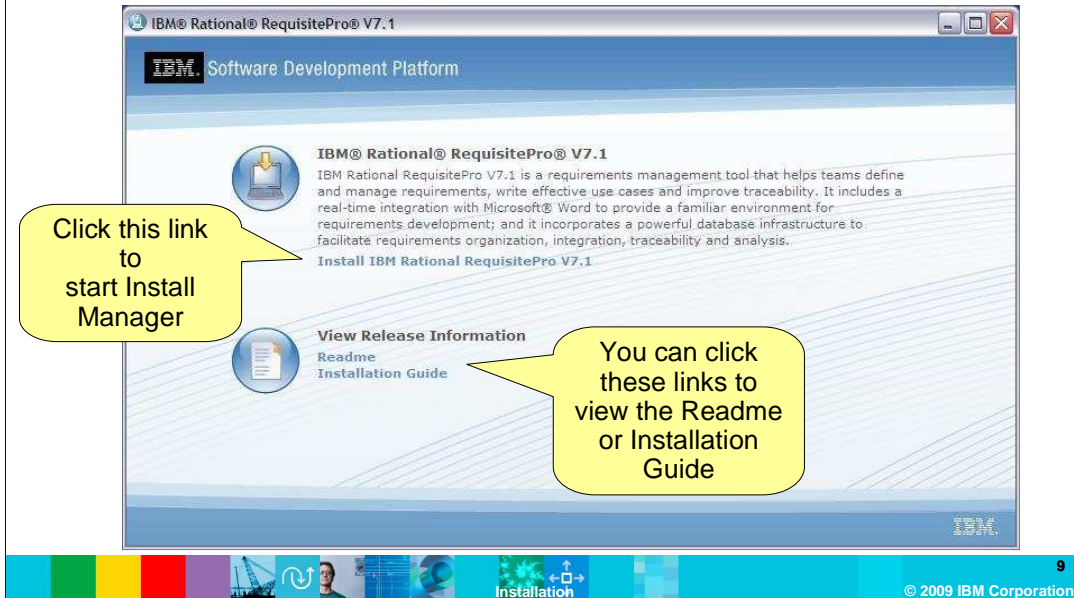
- Starting the Installation



Open the directory containing the extracted installation files. Double click launchpad.exe to start the installation.

Installation (continued)

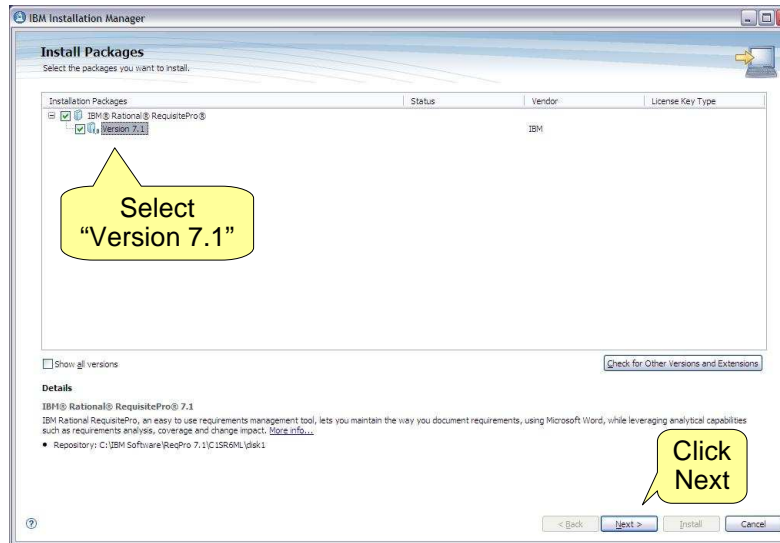
■ Starting the Installation



Click "Install IBM Rational RequisitePro V7.1". You can also view the readme or installation guide by clicking the links under "View Release Information".

Installation (continued)

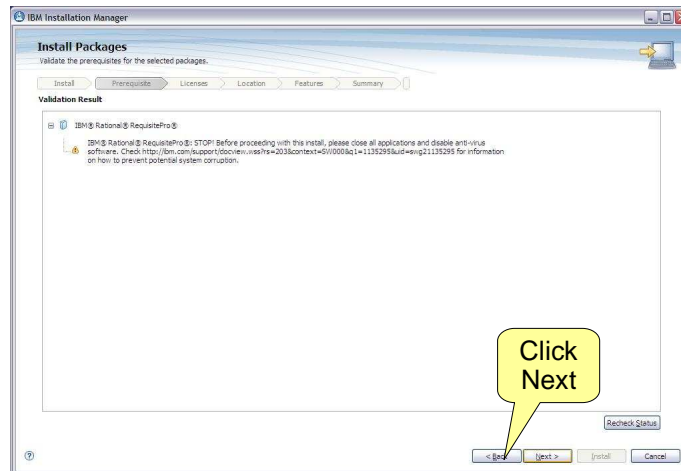
■ Selecting Packages



Under "Installation Packages" select Version 7.1 and click **Next** to proceed with the installation.

Installation (continued)

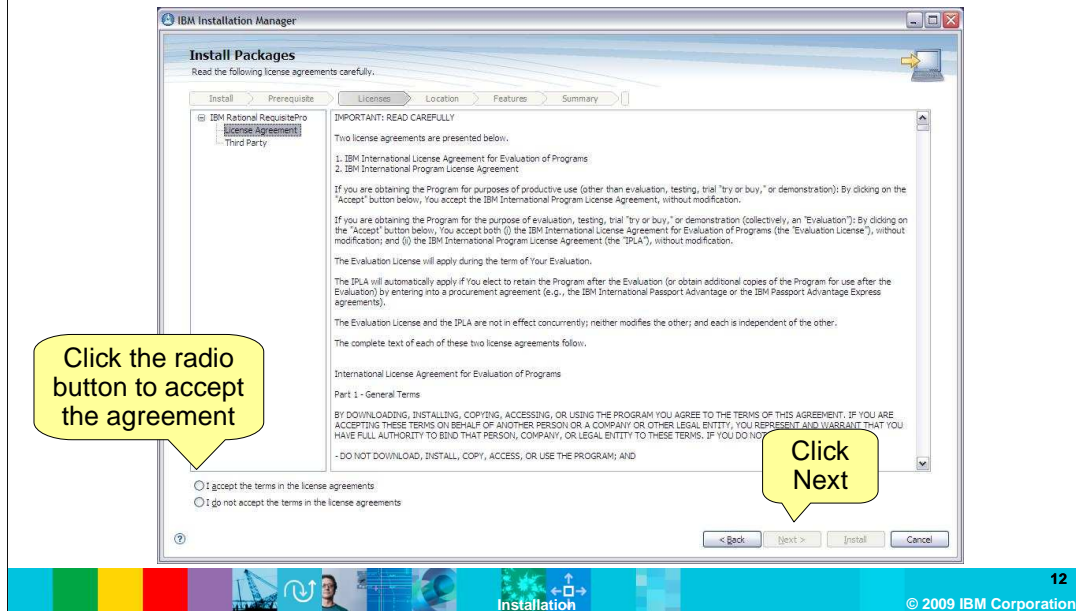
- Disable the Anti-Virus software



Make sure you disable any anti-virus or security software before continuing. This can prevent certain files from being extracted during the installation. The files that it typically prevents are necessary for RequisitePro and RequisiteWeb to function properly.

Installation (continued)

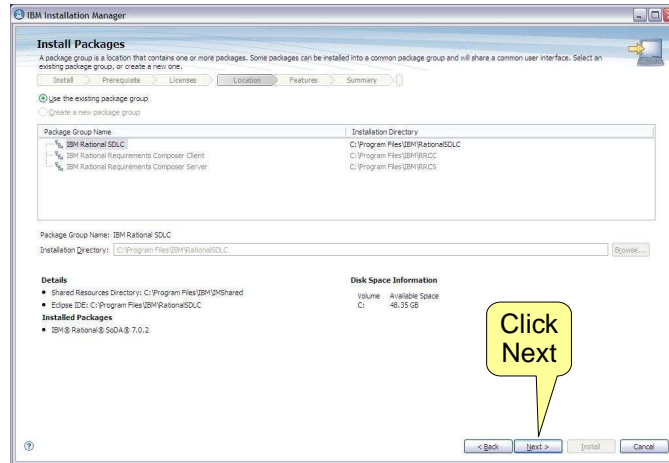
License Agreement



Click "I accept the terms in the license agreement" and choose **Next**. If you do not make a selection, **Next** is not available.

Installation (continued)

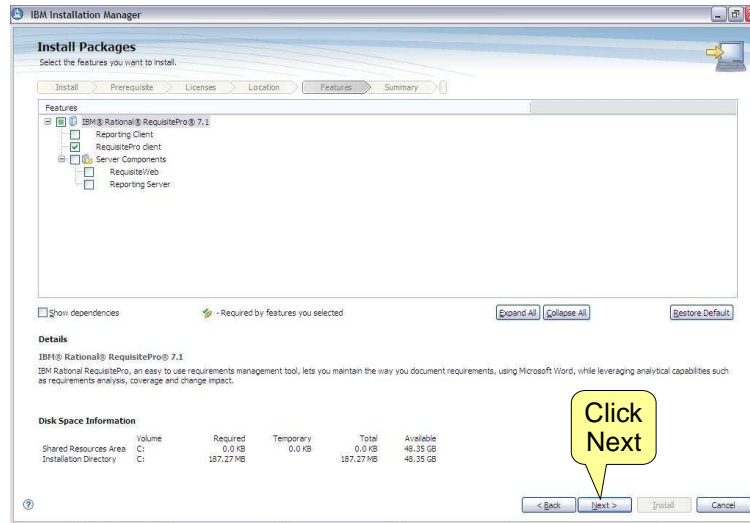
■ Selecting a Package Group



If you have an existing package group with Rational products, you will have to use that group. If not, you can create a new package group. After you finish click **Next**.

Installation (continued)

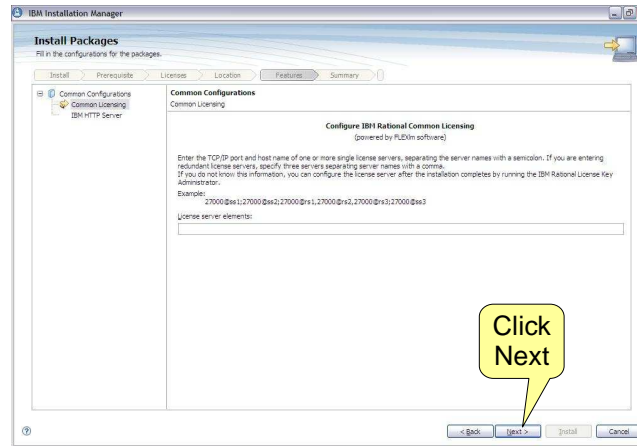
- Selecting Options to Install



Select what options you want to install from the RequisitePro V7.1 package under **Features**. Click **Next**.

Installation (continued)

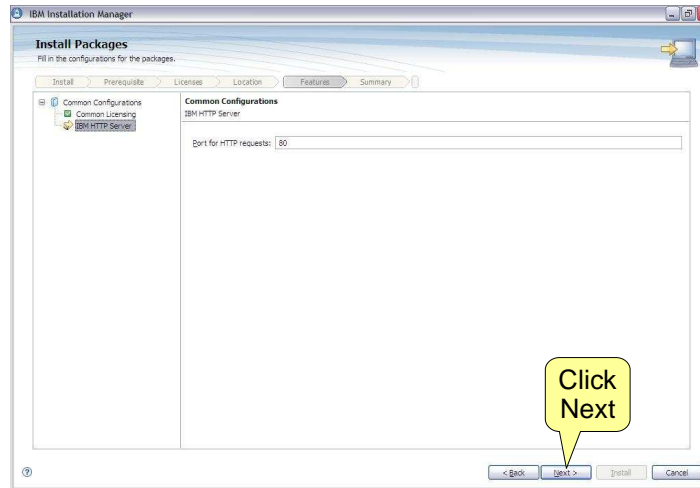
- License Server/IBM HTTP Server Port



If you know the License Server information, you can enter it here. If not, click **Next** and configure it later. If you configure it later, use the License Key Administrator.

Installation (continued)

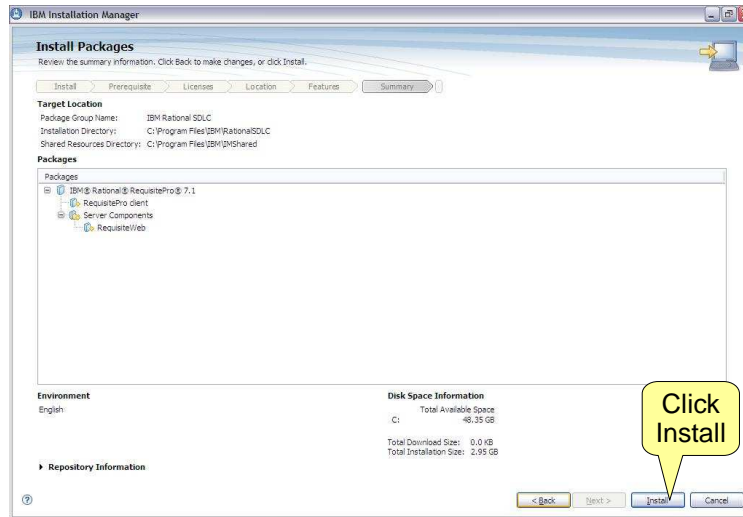
- License Server/IBM HTTP Server Port



You can configure the IBM HTTP Server port, if necessary. By default, RequisiteWeb uses Port 80. If this port is in use or blocked, you can enter another port. Check with your Administrator.

Installation (continued)

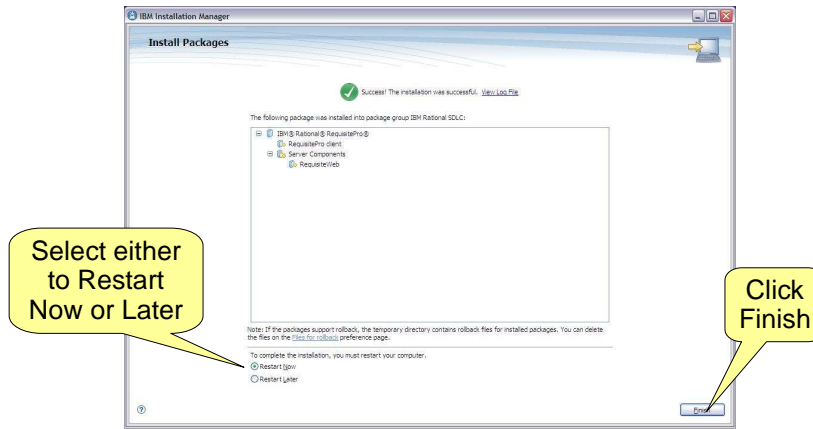
- Review before installing



Here you can review what packages are going to be installed. If you are OK with the options, click **Install**. If you need to make any changes click **Back**.

Installation (continued)

- Installation finished



If the installation is successful, you will see a green check mark up top. If you run into any errors, capture any errors you encountered and contact IBM Rational Support.

Summary

- **RequisitePro V7.1 Introduction**

- ▶ Differences between prior installation method versus using Installation Manager

- **Installation**

- ▶ System requirements
- ▶ Step by step installation



In summary, this module covered two topics. An introduction to RequisitePro V7.1 and steps to complete the Installation. As an administrator, you should now be comfortable with the basic installation tasks the were covered in this module.

Additional resources

■ Next Steps

- ▶ Configuring a database for RequisitePro to use
 - <http://publib.boulder.ibm.com/infocenter/reqpro/v7r1m0/index.jsp?topic=/com.ibm.rational.reqpro.relnotes.doc/com.ibm.rational.reqpro.relnotes.doc.htm>

■ Additional resources on ibm.com

- ▶ <http://www-01.ibm.com/software/awdtools/reqpro/>
- ▶ <http://www-01.ibm.com/software/awdtools/reqpro/support/>



The next steps are to familiarize yourself with configuring a database for RequisitePro to use. Additional resources are located on the ibm.com Web site.

Feedback

Your feedback is valuable

You can help improve the quality of IBM Education Assistant content to better meet your needs by providing feedback.

- Did you find this module useful?
- Did it help you solve a problem or answer a question?
- Do you have suggestions for improvements?

Click to send e-mail feedback:

mailto:iea@us.ibm.com?subject=Feedback_about_IEA_-_ReqPro_71_Installation.ppt

This module is also available in PDF format at: [../IEA_-_ReqPro_71_Installation.pdf](http://IEA_-_ReqPro_71_Installation.pdf)



You can help improve the quality of IBM Education Assistant content by providing feedback.

Trademarks, copyrights, and disclaimers

IBM, the IBM logo, ibm.com, and the following terms are trademarks or registered trademarks of International Business Machines Corporation in the United States, other countries, or both:

ClearQuest Rational Requisite RequisitePro SoDA

If these and other IBM trademarked terms are marked on their first occurrence in this information with a trademark symbol (® or ™), these symbols indicate U.S. registered or common law trademarks owned by IBM at the time this information was published. Such trademarks may also be registered or common law trademarks in other countries. A current list of other IBM trademarks is available on the Web at "Copyright and trademark information" at <http://www.ibm.com/legal/copytrade.shtml>

Rational is a trademark of International Business Machines Corporation and Rational Software Corporation in the United States, Other Countries, or both.

Other company, product, or service names may be trademarks or service marks of others.

Product data has been reviewed for accuracy as of the date of initial publication. Product data is subject to change without notice. This document could include technical inaccuracies or typographical errors. IBM may make improvements or changes in the products or programs described herein at any time without notice. Any statements regarding IBM's future direction or intent are subject to change or withdrawal without notice, and represent goals and objectives only. References in this document to IBM products, programs, or services does not imply that IBM intends to make such products, programs or services available in all countries in which IBM operates or does business. Any reference to an IBM Program Product in this document is not intended to state or imply that only that program product may be used. Any functionally equivalent program, that does not infringe IBM's intellectual property rights, may be used instead.

THE INFORMATION PROVIDED IN THIS DOCUMENT IS DISTRIBUTED "AS IS" WITHOUT ANY WARRANTY, EITHER EXPRESS OR IMPLIED. IBM EXPRESSLY DISCLAIMS ANY WARRANTIES OF MERCHANTABILITY, FITNESS FOR A PARTICULAR PURPOSE OR NONINFRINGEMENT. IBM shall have no responsibility to update this information. IBM products are warranted, if at all, according to the terms and conditions of the agreements (for example, IBM Customer Agreement, Statement of Limited Warranty, International Program License Agreement, etc.) under which they are provided. Information concerning non-IBM products was obtained from the suppliers of those products, their published announcements or other publicly available sources. IBM has not tested those products in connection with this publication and cannot confirm the accuracy of performance, compatibility or any other claims related to non-IBM products.

IBM makes no representations or warranties, express or implied, regarding non-IBM products and services.

The provision of the information contained herein is not intended to, and does not, grant any right or license under any IBM patents or copyrights. Inquiries regarding patent or copyright licenses should be made, in writing, to:

IBM Director of Licensing
IBM Corporation
North Castle Drive
Armonk, NY 10504-1785
U.S.A.

Performance is based on measurements and projections using standard IBM benchmarks in a controlled environment. All customer examples described are presented as illustrations of how those customers have used IBM products and the results they may have achieved. The actual throughput or performance that any user will experience will vary depending upon considerations such as the amount of multiprogramming in the user's job stream, the I/O configuration, the storage configuration, and the workload processed. Therefore, no assurance can be given that an individual user will achieve throughput or performance improvements equivalent to the ratios stated here.

© Copyright International Business Machines Corporation 2009. All rights reserved.

Note to U.S. Government Users - Documentation related to restricted rights-Use, duplication or disclosure is subject to restrictions set forth in GSA ADP Schedule Contract and IBM Corp.

