

IBM WebSphere Business Services Fabric 6.2 – Lab exercise

Legacy Business Application: V6.1.2 Migration

What this exercise is about	1
Lab requirements	1
What you should be able to do	2
Exercise instructions	2
What you did in this lab	12

What this exercise is about

This lab provides the procedure for migrating WebSphere Business Services Fabric V6.1 to the V6.2. This lab is not dependent on the previous two labs.

This lab does not cover the new business spaces introduced in version 6.2. This lab is provided AS-IS, with no formal IBM support.

Lab requirements

- Software needed :
 - WebSphere Business Modeler Advanced version 6.2
 - WebSphere Integration Developer version 6.2 with WebSphere Process Server unit test environment
 - WebSphere Tool Pack with WebSphere Business Fabric Server unit test environment version 6.2
 - WebSphere Monitor Toolkit version 6.2
 - WebSphere Registry and Repository version 6.1.2 or later
- All PIF a and related files can be found in **Migration-version6_1_2-labfile.zip**
- These labs use username: **admin** and password: **admin** to login as administrator for any of the Web consoles including WebSphere Business Services Fabric and WebSphere Process Server. Your environment can use different credential details.
- This lab requires WebSphere Process Server application port is **9081**.

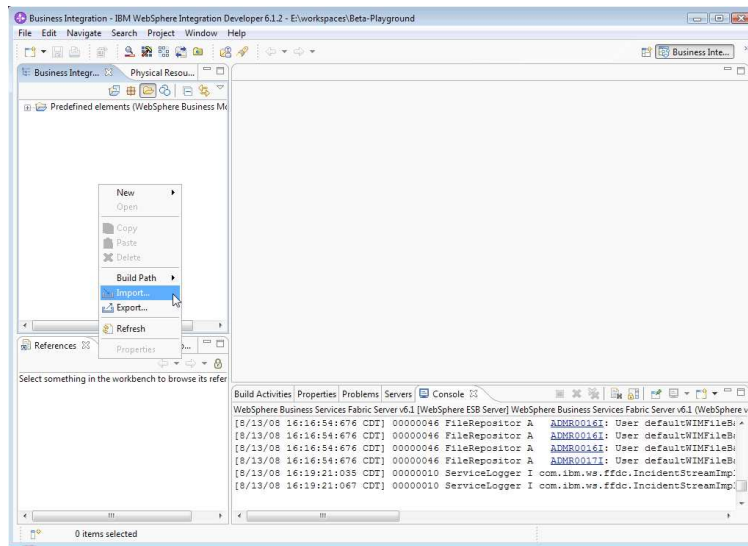
What you should be able to do

After performing this lab, participants will have:

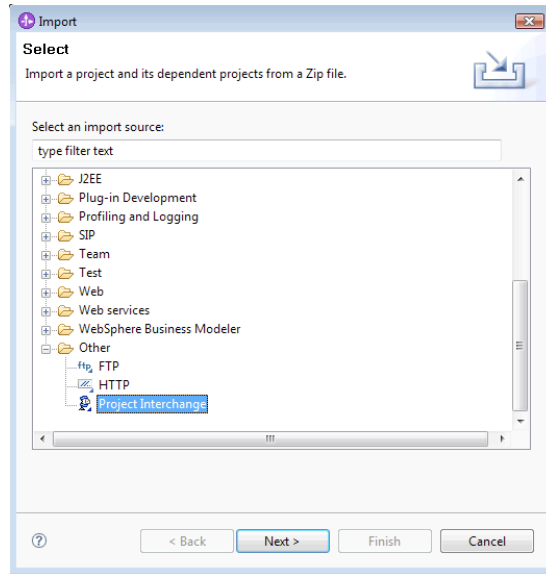
- Exposed to WebSphere Process Server and Fabric Web tools
- Migrate a project from 6.1.2 to 6.2
- Build business policies
- Monitor-Fabric interaction

Exercise instructions

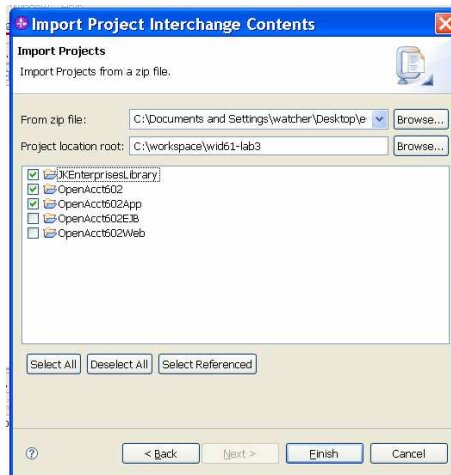
1. Open WebSphere Integration Developer with a new workspace for example **C:\workspace\wid61-lab3**.
2. Once WebSphere Integration Developer is started, switch to the Business Integration perspective (if necessary) and right-click within the Business Integration Tab and select Import



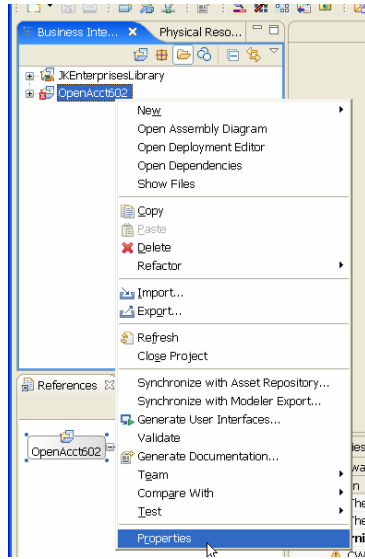
3. Select Project Interchange and click Next.



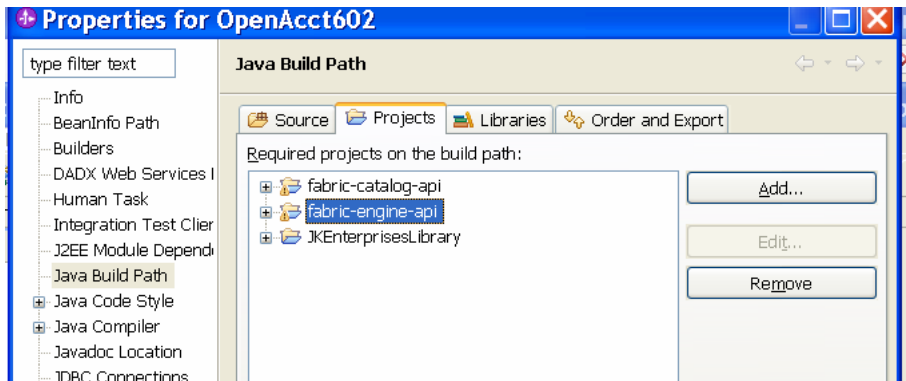
- ___4. Browse to **POT_PIF-export-start.zip**. Select only JKEnterpriseLibrary, OpenAcct602 and OpenAcct602App and click **Finish**.



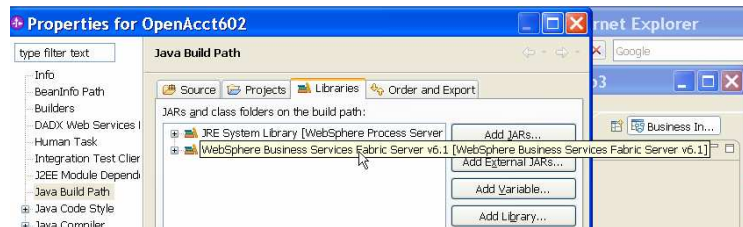
- ___5. Right click **OpenAcct602** in the Business Integration view and select **Properties**



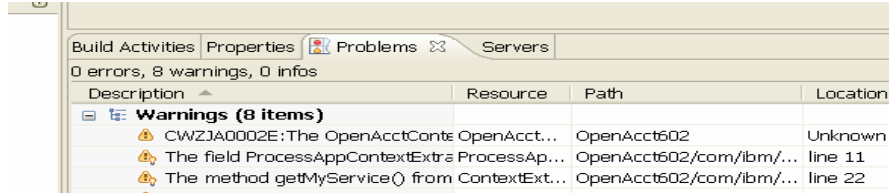
- __6. Select Java Build Path > Projects
- __7. Select and remove fabric-catalog-api and fabric-engine-api



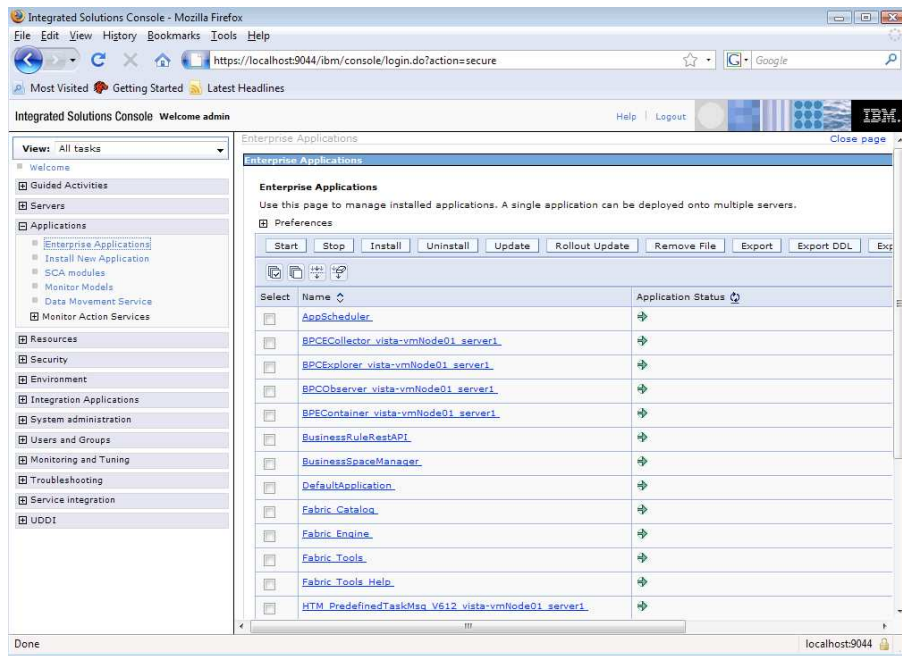
- __8. Verify under Libraries WebSphere Business Services Fabric Server library is listed



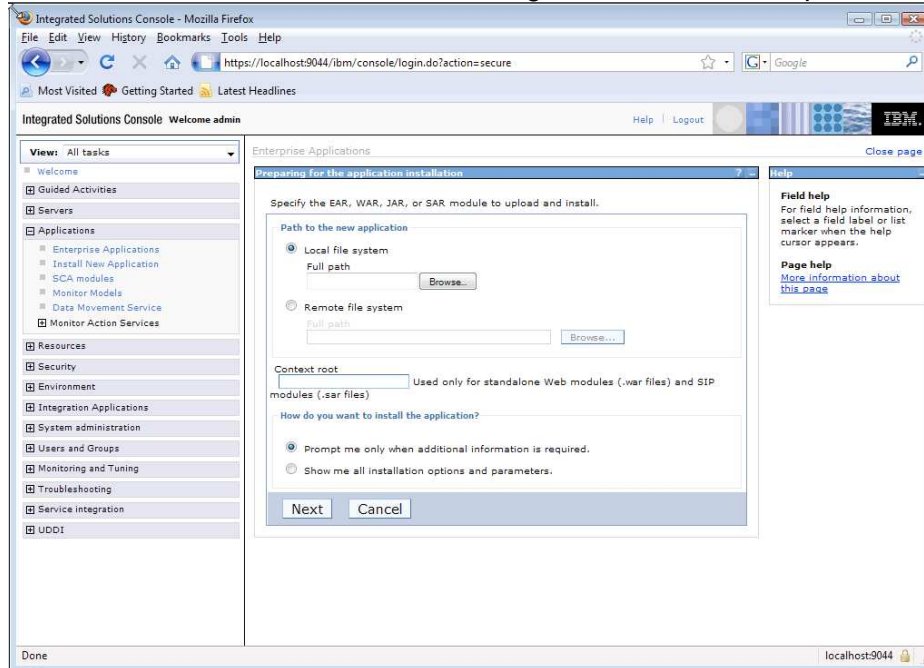
- __9. Click **OK** to close the properties page. Wait for the project to rebuild and verify there are no errors. You might still have a few warnings.



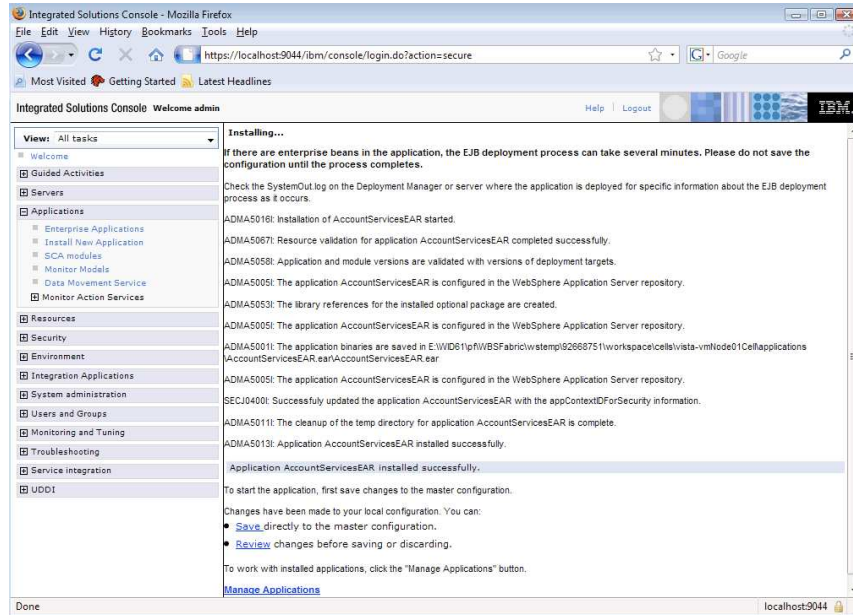
- ___10. Start WebSphere Business Services Fabric Server. This will take a few minutes. Verify the server **state** is **Started**.
- ___11. Browse to the WebSphere Process Server admin console at <https://localhost:9044/ibm/console> and login.
- ___12. Expand the applications menu and click Enterprise Applications.



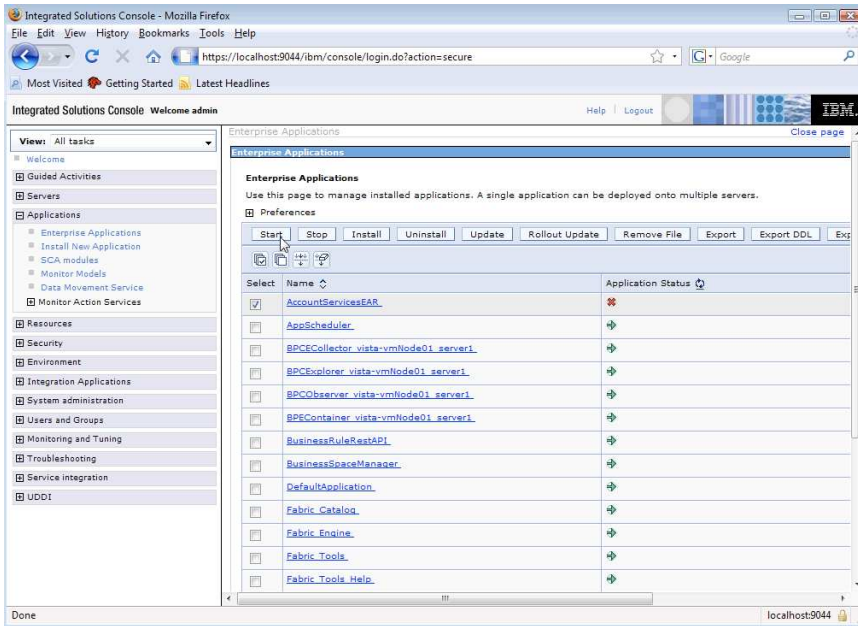
- __13. Click the Install Button, and the screen should appear. Provide the location for the AccountServicesEAR.ear under the location given under Lab Setup. Click **Next**.



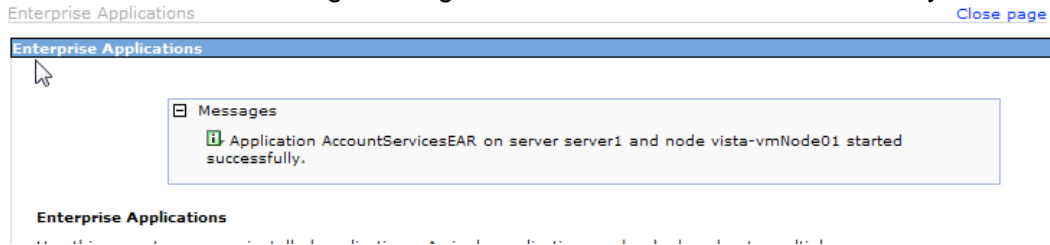
- __14. Accept the defaults and click Next twice and then the Finish Button. The following screen should appear. Save directly into the Master Configuration.



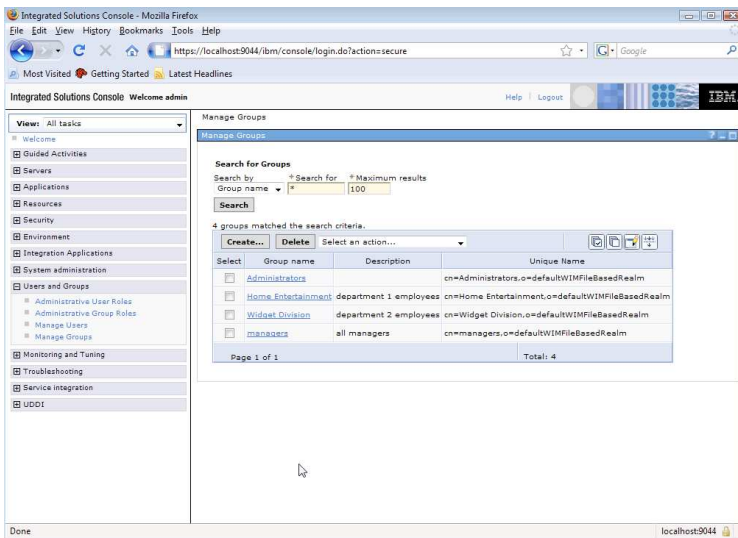
__15. Start the AccountServicesEAR



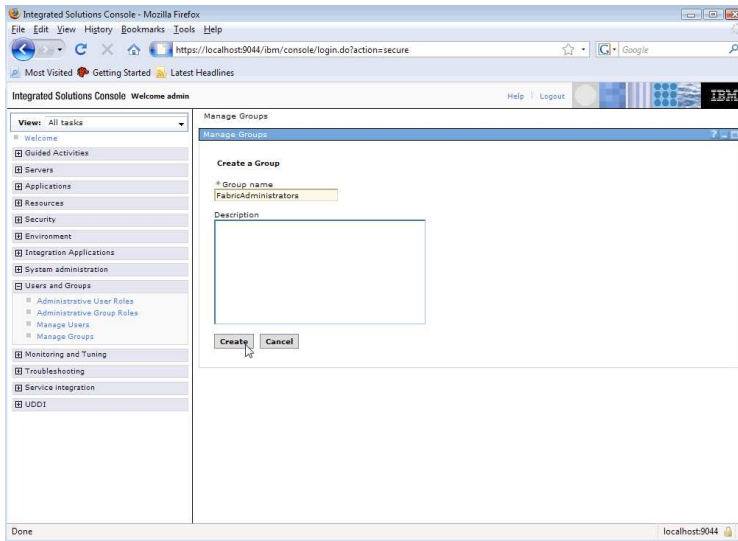
__16. There should be a message stating the EAR file was started successfully.



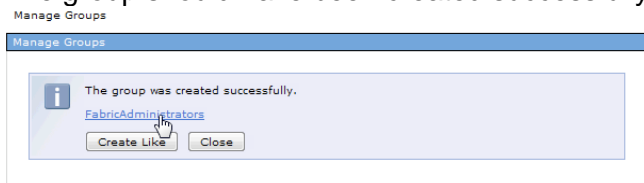
__17. In the WebSphere Application Server console expand the Users and Groups menu and select Manage Groups, click the Search Button.



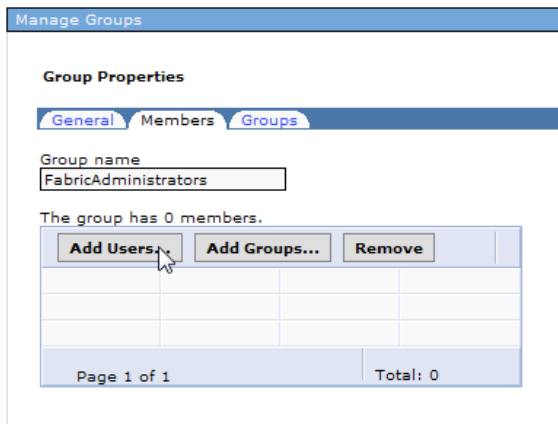
- __18. If the group FabricAdministrators has not been created, click the Create Button. The following screen should appear. Type FabricAdministrators as the Group Name and click the Create Button.



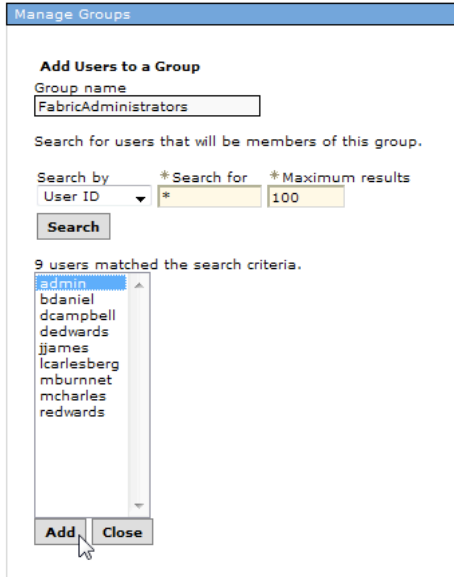
- __19. The group should have been created successfully. Click Fabric Administrators.



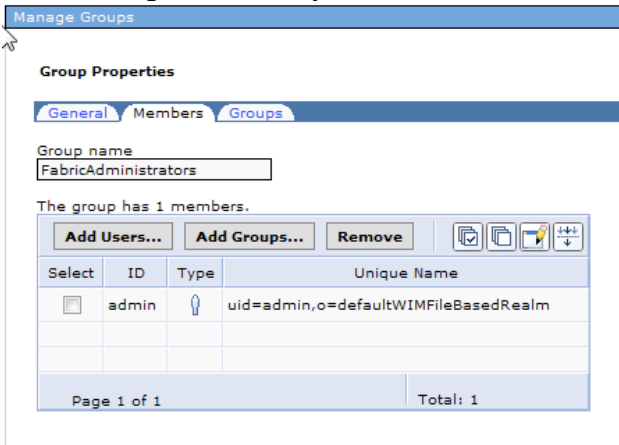
- __20. Click the Members Tab and select Add Users



- __21. Search and add the admin user.

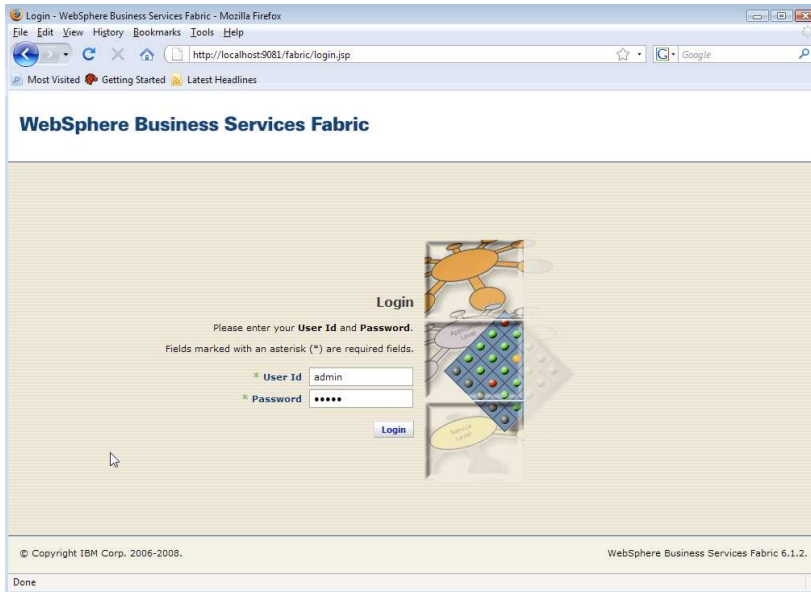


__22. After adding successfully click the Close button and then these screen should appear:

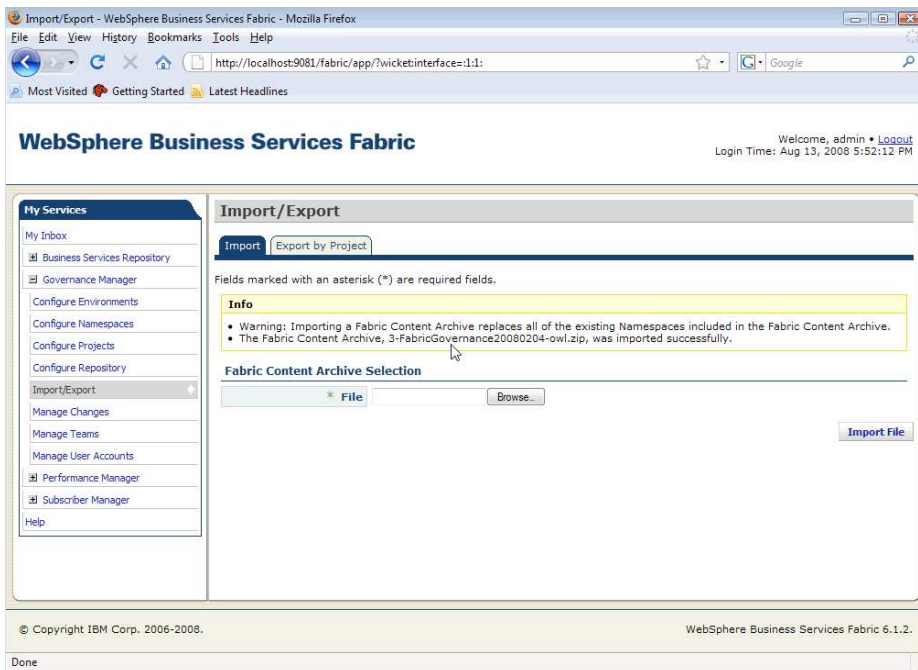


__23. Logout of WebSphere Process Server administrative console

__24. Log into the WebSphere Business Services Fabric Web tools console at <http://localhost:9081/fabric>



- __25. Expand the Governance Manager Menu and select Import/Export
- __26. Browse to **C:\Documents and Settings\watcher\Desktop\le-2-e_scenario\le-2-e_scenario**
- __27. Select 1-FabricGovernance20080204-osl.zip file and click **Import File**. Verify the confirmation states the files imported successfully.



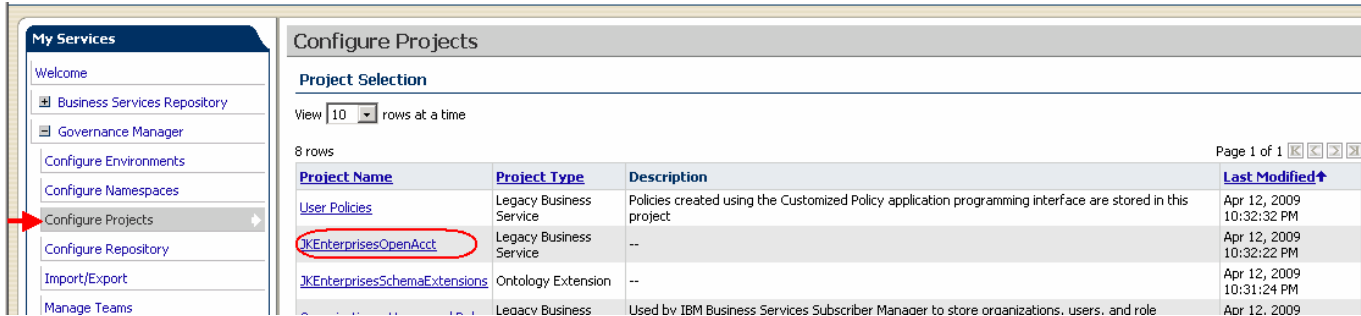
- __28. Similarly import the file in the order :
 - __a. 2-OrganizationsUsersandRoles20080204-owl,

__b. 3-JKEnterprisesSchemaExtensions20080204-owl,

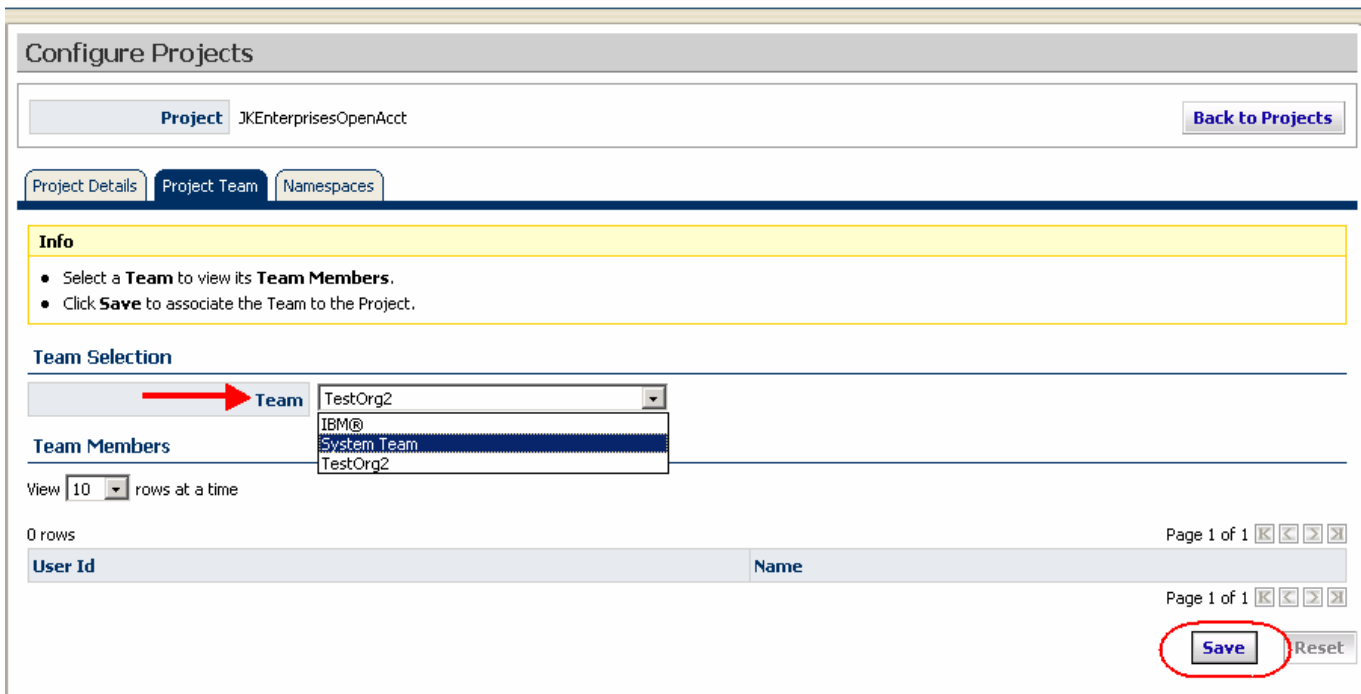
__c. 4-JKEnterprisesOpenAcct20080204-owl

__d. 5-UserPolicies20080204-owl.

__29. Click **Governance Manager** -> **Configure Projects** and select **JKEnterprisesOpenAcct**



__30. Under the **Project Team** tab select **System Team** and click **Save**



__31. Click **Logout**

What you did in this lab



You have successfully migrated a Fabric project created in version 6.1.2 project into version 6.2