

WebSphere Business Compass V7.0

Business design space administration



This presentation provides an introduction to the administration functions of WebSphere® Business Compass Server V7.0 that are specific to the business design space. The business design space is the part of WebSphere Business Compass that provides the business modeling functionality.

Goal

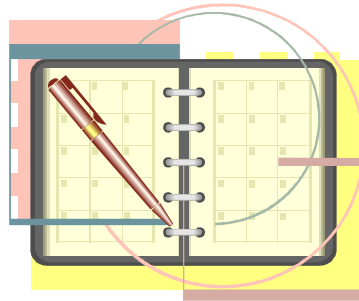
- Provide details about managing users and projects in WebSphere Business Compass business design space.
 - The business design space provides the business leader functionality for the WebSphere Business Compass server



The goal here is to provide the basic information needed to configure your users and groups to be used with the WebSphere Business Compass business design space.

Agenda

- User registries
- Business design home
- Sharing documents
- Network browser



This presentation covers the application level administration for the WebSphere Business Compass business design space.

The business design home space is a special business space that is provided to help you manage teams and document sharing. This is covered along with other configuration options that should be considered when installing and configuring WebSphere Business Compass.

Business space users and team members

Business space users are automatically team members

Adds a user to the business space as a viewer

From the previous discussion on the Business Compass administration, you will remember that a business space owner can add users as viewers or editors to their business space. The WebSphere Business Compass has the concept of team membership and a widget is provided on the overview page to help you manage your users without having to use the business space management facilities.

Adding a user or group as a team member here, is the same as adding them as a viewer to your business space using the business space management facilities.

Home page – Getting started

The screenshot shows the WebSphere Business Design Home page. At the top, there is a navigation bar with the following items: Home (circled in red), Go to Spaces, Manage Spaces, and Actions. Below this is the 'Business Design Home' header. The main content area is divided into several sections:

- Welcome to WebSphere Business Compass:** A section with a compass graphic and the text: "Transform your business using the WebSphere Business Compass collaborative design and reviewing features." It includes a "Learn >>" button with the text "Read about the business design features" and a "Start >>" button with the text "Create a business design space".
- Watch >>:** A section with a video player thumbnail and the text "Take a tour of our sample".
- Try >>:** A section with the text "Import the business design sample".
- Business Design Space Browser:** A table with the following columns: Document Name, Locked By, and Description. The table contains two rows:

Document Name	Locked By	Description
Travel Booking		
Travel agency vocabulary		Definitions used in the
- User Profile:** A section for Jeffrey K. Stratford, with ID: jstratfo@us.ibm.com and email: jstratfo@us.ibm.com. It includes an "Edit" button.

The footer of the page contains the text: "Waiting for star3.torolab.ibm.com...", "business design space administration", "star3.torolab.ibm.com:9443", and "© 2010 IBM Corporation".

When you first log into the WebSphere Business Compass you are presented with the home page. The home page is full of links to documentation, educational material, tutorials, and a link to the space manager. The space manager is where you can get started creating your own personal business design space.

The home page is fully customizable by the business space administrator so that you can create your own personalized welcome experience for your organization.

Notice the other menu items across the top, 'go to spaces', 'manage spaces', and 'actions'. These will always be with you, no matter where you are in the business space. They provide quick navigation and access to the space management functions.

Configuring the environment

There are several advanced features that an administrator needs to be aware of details for configuring these options can be found in the product information center

[Configuring your environment](#)

link

- The default home space
 - Business design home is available for you to use
 - You can create and set your own
- Email notification
 - When a user requests access to a public document
 - The owner can be notified by e-mail
 - Enabled and disabled using the integrated solutions console
- Federating additional nodes
- Configuring Lotus® Forms Turbo server
 - Post installation
 - Establish trust relationships between servers



6

Business design space administration

© 2010 IBM Corporation

The administrator can create a default home space for users so that when they log into WebSphere Business Compass, they are taken straight to a relevant product environment. This is especially useful for users who are not familiar with business space and who are primarily interested in creating and sharing business design documents such as process maps, strategy maps, and business vocabularies.

Another configurable feature is the e-mail notification. As part of the document sharing scenario, the document owner can be notified whenever someone makes a request for edit access to a public document. The requestor is also notified when their request has been accepted or rejected.

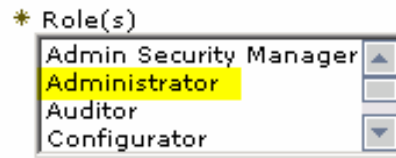
After you have created a highly available environment, you can federate additional nodes to the deployment manager at a later time if needed.

By default, Lotus Forms Turbo is installed locally, but if WebSphere Business Compass is using a self-signed certificate for SSL, the server requires information about how to retrieve the certificate file. Therefore you must then configure SSO and the exchange SSL certificates in order to get Lotus Forms Turbo working with WebSphere Business Compass.

To learn the details of these configuration options, use the “Configuring your environment” link to the WebSphere Business Compass product information center which is provided here.

Setting the default home space

- Log into the business space as an administrator
- Select **"Manage Spaces"**
- Find the space you want to share
 - set to share using the **"Actions"** menu on the right
 - search for the users and or groups you want to share the space with
 - **Tip:** To set the default home space for all users at once...
 - Select *"Group Search"* from the drop-down menu next to the search field
 - In the Search field type *"All authenticated users"*
 - Select the users or groups from the Search Results pane, and click the **Add to View** button and save
- From the **Actions** menu next to your space, click **Set as Home**

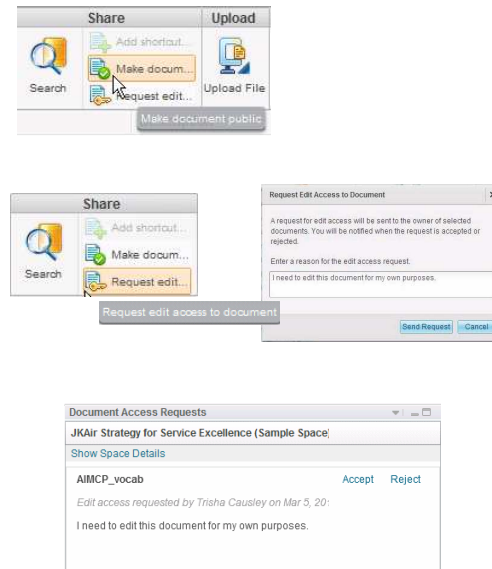


You might find that the Business Design Home space is exactly what you need. If this works for you, then you can set it as the default home for all users logging into the WebSphere Business Compass server. If not, you can create your own custom business space and set it as the default home for your users.

Remember that the administrator is defined by the security role in the WebSphere integrated solutions console.

Sharing documents

- Owner makes documents public
- User finds public document in repository and creates a short cut
- User later makes a request for edit access to the document
- The owner sees the request in the “*Document Access Requests*” widget
 - (optionally) receives an e-mail of the request
- The owner then accepts or rejects the request from the “*Document Access Requests*” widget
 - (optionally) the requestor is notified by e-mail
- Access is given to the business space and not the individual



As a business space owner and administrator, will need to know about document sharing.

The first step in document sharing is for the owner of the document to make it public. Once it is public, it can be seen by users in other business design spaces when they do queries against the repository.

Having found a document of interest using the search facility, you can then create a read-only shortcut to the document in their business space.

If you want to edit the document, they need to request edit access from the owner. If the e-mail notification feature is configured, the document owner will receive an e-mail notifying them that someone wants to have edit access to one of their documents. The document owner then uses the widgets on the document access control page to grant or deny access.

If the e-mail notification has been configured the requestor is notified by e-mail of the decision.

The edit access is granted to the business space and not the individual.

Document access control

Business Design Home

Business Design Central | Document Viewer | Document Access Control

Document Access Requests | Document Access Details

Document Access Details

Document Name

- 2010 and beyond
- A capability
- A collab
- AIMCP_vocab **Unlock** Locked: Jeffery K. Stratford
- An Org
- BestCarrierShipping
- CustomerServices_vocab
- DataInputTest
- GetCustomerInformation

Document Owners

* Jeffery K. Stratford

Add Owner Remove Owner

Spaces with edit access for the selected document

- AIMCP Design Space
- JKAir Strategy for Service

Revoke Space Access

Access is granted to the entire business space

9 Business design space administration © 2010 IBM Corporation

There are two widgets on the document access control page. One is the document access requests and the other is the document access details.

The document access request widget was shown on the previous page and does not need any further explanation.

The document access details widget though, has several functions that need to be mentioned.

First, it is important to note that when edit access is granted for a document it is not for the individual that made the request, but for the entire business space. This means that all the users in that business space will have edit access to the document.

Next, consider what it means to be a document owner. The business space owner is automatically the owner of all the documents that are in the business space.

An owner can accept or reject requests for edit access and they can remove the edit privilege. Owners can also unlock documents that have been left in the locked state. Furthermore, owners can also add and remove other owners.

Business design central

Home | Go to Spaces | Manage Spaces | Actions | jstratfo@us.ibm.com | Help | Logout

Business Design Home

Business Design Central | Document Viewer | Document Access Control

Welcome to WebSphere Business Compass
Transform your business using the collaborative design and reviewing features.

Learn >> Read about the business design features

Start >> Create a business design space

Watch >> Take a tour of our sample

Try >> Import the business design sample

Business Design Space Browser

Document Name
BPM Glossary
Handoff Task Flow (As-Is)
Personas
BA-IT Interaction (As-Is)
Handoff Task Flow (To-Be)
BPM Data Objects

User Profile

Jeffery K. Stratfor
ID: jstratfo@us.ibm.com
jstratfo@us.ibm.com

10 Business design space administration © 2010 IBM Corporation

The “business design central” page is a convenient starting point for working with business spaces.

Here you have easy access to samples, documentation and tutorials and to the various business design spaces you are a member of.

You can complete your team profile and create new business design spaces

Document viewer

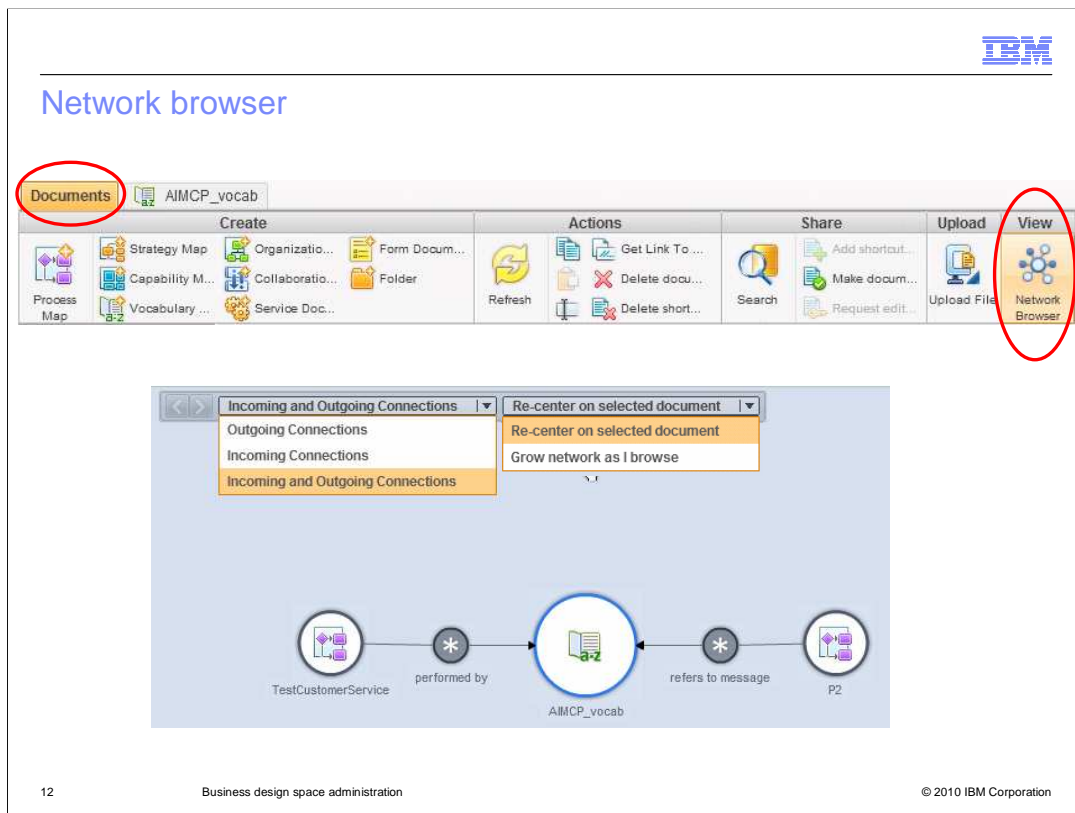
The screenshot displays the 'Business Design Home' interface, specifically the 'Document Viewer' section. The page title is 'Business Design Home' and the navigation bar includes 'Business Design Central', 'Document Viewer', and 'Document Access Control'. The main content area is titled 'Documents' and shows a search interface for the 'AIMCP_vocab' repository. A search bar is present with a search button and a dropdown menu for search results. Below the search bar, there is a filter dropdown menu labeled 'Include' with a list of document types. The search results are displayed in a table with columns for 'Publish Date' and 'Publisher'.

	Publish Date	Publisher
	Dec 16, 2009 4:09:25 PM	Victor Chan
	Mar 5, 2010 9:25:46 AM	Jeffery K. Stratford
	Feb 18, 2010 2:00:05 PM	Victor Chan
	Dec 16, 2009 11:46:48 AM	Victor Chan
	Dec 15, 2009 5:33:27 PM	Victor Chan
	Feb 1, 2010 8:40:46 AM	Trisha Causley

11 Business design space administration © 2010 IBM Corporation

The document viewer is precisely that. It only allows you to search for documents and view them in a read-only mode.

There is a filtering capability to help you find the kind of documents you're interested in and you can search in the public documents or your own private documents.



The network browser is invoked from the toolbar of the “documents” page.

It can be very useful when trying to understand a complex project and to debug export problems.

The network browser displays the link relationships between the documents in a graphical format. The drop down menu on the left lets you filter the connections based on whether they are incoming or outgoing from the currently selected document. Here you can see that there are two business process maps that are using the AIMCP vocabulary document. Selecting one of the process map documents will shift the focus to that document and display the links relative to it.

The drop down menu on the right provides centering options. You can re-center on the selected document or grow the network as you make your selections.

Summary

- User registries
- Business design home
- Sharing documents
- Network browser



The WebSphere Business Compass design space uses the base user registry provided by the WebSphere business space and the WebSphere Application Server. The basic business space management functions for creating teams and sharing documents are available through the default business space called the business design home. The business design home is composed of three pages, business design central, document viewer and document access control.

Other administration and configuration tasks for the business design space involve, customizing the home page, enabling and disabling the e-mail notification, federating node in a highly available topology and configuring the Lotus Forms Turbo server. Details for these tasks can be found in the WebSphere Business Compass product information center.

The network browser tool, for exploring the link relationships of the documents was also introduced. This is useful for understanding large and complex projects and debugging export problems.

Feedback

Your feedback is valuable

You can help improve the quality of IBM Education Assistant content to better meet your needs by providing feedback.

- Did you find this module useful?
- Did it help you solve a problem or answer a question?
- Do you have suggestions for improvements?

Click to send e-mail feedback:

mailto:iea@us.ibm.com?subject=Feedback_about_WBPMv70_BDesign_Admin.ppt

This module is also available in PDF format at: ..\\WBPMv70_BDesign_Admin.pdf

You can help improve the quality of IBM Education Assistant content by providing feedback.



Trademarks, disclaimer, and copyright information

IBM, the IBM logo, ibm.com, Lotus, and WebSphere are trademarks or registered trademarks of International Business Machines Corp., registered in many jurisdictions worldwide. Other product and service names might be trademarks of IBM or other companies. A current list of other IBM trademarks is available on the Web at "[Copyright and trademark information](http://www.ibm.com/legal/copytrade.shtml)" at <http://www.ibm.com/legal/copytrade.shtml>

THE INFORMATION CONTAINED IN THIS PRESENTATION IS PROVIDED FOR INFORMATIONAL PURPOSES ONLY. WHILE EFFORTS WERE MADE TO VERIFY THE COMPLETENESS AND ACCURACY OF THE INFORMATION CONTAINED IN THIS PRESENTATION, IT IS PROVIDED "AS IS" WITHOUT WARRANTY OF ANY KIND, EXPRESS OR IMPLIED. IN ADDITION, THIS INFORMATION IS BASED ON IBM'S CURRENT PRODUCT PLANS AND STRATEGY, WHICH ARE SUBJECT TO CHANGE BY IBM WITHOUT NOTICE. IBM SHALL NOT BE RESPONSIBLE FOR ANY DAMAGES ARISING OUT OF THE USE OF, OR OTHERWISE RELATED TO, THIS PRESENTATION OR ANY OTHER DOCUMENTATION. NOTHING CONTAINED IN THIS PRESENTATION IS INTENDED TO, NOR SHALL HAVE THE EFFECT OF, CREATING ANY WARRANTIES OR REPRESENTATIONS FROM IBM (OR ITS SUPPLIERS OR LICENSORS), OR ALTERING THE TERMS AND CONDITIONS OF ANY AGREEMENT OR LICENSE GOVERNING THE USE OF IBM PRODUCTS OR SOFTWARE.

© Copyright International Business Machines Corporation 2010. All rights reserved.