

# IBM WebSphere Application Server Feature Pack for XML

## Installation



This presentation describes how to use IBM Installation Manager to install the IBM WebSphere® Application Server Feature Pack for XML.

---

## Table of contents

- Supported software
- Installation process
- Profile management

The first section describes the supported software that you can use with the feature pack for XML, and the second section describes the feature pack installation process.

## ***Supported software***

This section describes the software that is supported with the feature pack for XML, including supported operating systems and Web browsers.

## Required software

- The IBM WebSphere Application Server Feature Pack for XML runs on WebSphere Application Server V7
  - Fix Pack 7 or later is required, including both application server and SDK packages
- IBM Installation Manager 1.3.3 or later is required to install, update, and uninstall the feature pack

The Feature Pack for XML runs on top of WebSphere Application Server V7. A minimum maintenance level of Fix Pack 7 – including both the application server and SDK fix packages – is required. WebSphere Application Server maintenance needs to be applied using the WebSphere Update Installer. You also need to have IBM Installation Manager 1.3.3 or newer to be able to install the feature pack.

## Supported platforms and browsers

- Supported platforms
  - The feature pack supports the same operating systems as WebSphere Application Server V7, except IBM i
    - Only silent installation is available on Solaris and HP-UX
    - Installation on z/OS uses SMP/E rather than the Installation Manager
- Supported hardware
  - See the WebSphere Application Server V7 support pages for hardware support information

The Feature Pack for XML is supported on all of the same operating systems as WebSphere Application Server V7, except IBM i. The supported hardware is also the same as WebSphere Application Server V7. On Solaris and HP-UX, only silent installation is supported with the Installation Manager. Installation on z/OS uses SMP/E rather than the Installation Manager.

## ***Installation process***

This section describes the process for installing the Feature Pack for XML using IBM Installation Manager.

## Installation process

- Install WebSphere Application Server V7 and apply maintenance
- Download and install the IBM Installation Manager
- Configure the location of the product repository (optional)
- Import the appropriate application server into the Installation manager
- Install the WebSphere Application Server Feature Pack for XML
- Perform additional configuration actions

Before installing the feature pack, you need to have WebSphere Application Server V7 installed, with the correct level of maintenance applied. Then, install the IBM Installation Manager. If you are using a local repository, you need to configure the product repository location – otherwise, the remote repositories will already be configured in the Installation Manager. Since the feature pack needs to be installed on top of WebSphere Application Server, you need to import an installation of the application server into the Installation Manager to use with the feature pack. Then, install the feature pack using the Installation Manager. Before you begin deploying and testing XML, you will also need to configure your XML testing environment.

## Install the application server

- Install WebSphere Application Server V7
  - Information on how to install the application server is available on IBM education assistant
  - Network Deployment, base, base trial, express®, express trial, and developers product editions are supported
  - The feature pack for XML requires application server fix pack 7 or later, including both application server and SDK fix packages
    - Both packages must be at the same fix pack level

You must have WebSphere Application Server V7 installed, at the appropriate maintenance level, before you can install the feature pack for XML. If you need additional information about installing the application server, you can access the IBM education assistant module included in the references of this presentation. The feature pack is supported on the Network Deployment, base, express, and developers editions of the application server, including trial editions. You are not able to install the feature pack unless your application server installation is at least fix pack 7. When you install fix pack 7, you need to apply both the application server package and the SDK package.



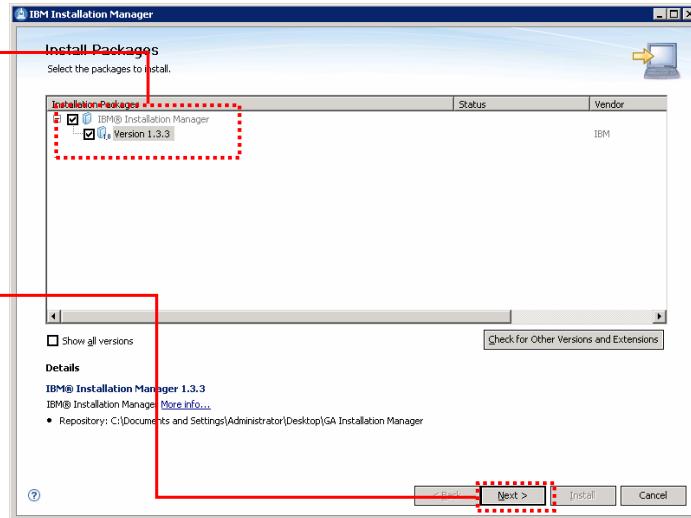
## Install the IBM Installation Manager (1 of 3)

Unpack the Installation Manager package and run the installation program, for example, install.exe

The first page shows that you are installing the IBM Installation Manager package

Click **Next**

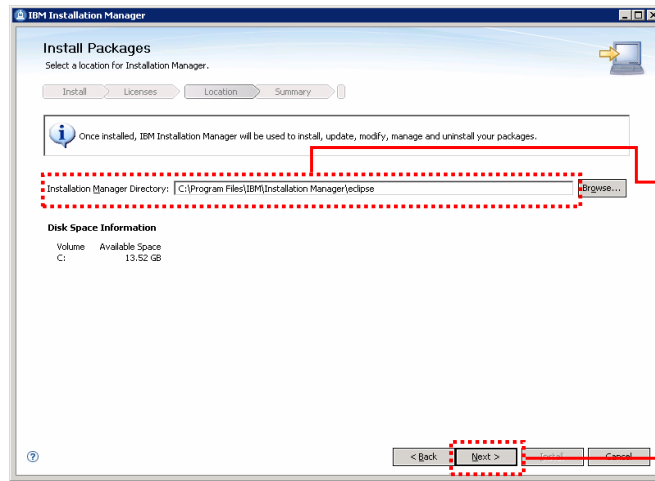
On the next panel, accept the license agreement and click **Next**



To install IBM Installation Manager, download and unpack the Installation Manager package and run the installation program – for example, install.exe, on Windows®. Only use the installation program if you are logged in as an administrative user – for example, Administrator on Windows or root on Linux®. Otherwise, you need to use the non-administrative user installation program, called userinst. All of the commands and example directories in this presentation assume that you are logged in and installing as an administrative user.

When you run the installation program for IBM Installation Manager, the first panel shows that you are installing the Installation Manager package at Version 1.3.1. Click **Next** on the Install Packages panel, and on the next panel, accept the license agreement and continue through the wizard.

## Install the IBM Installation Manager (2 of 3)



**Recommended:** Use the supplied default installation directory, for example:

C:\Program Files\IBM\Installation Manager\eclipse, or  
/opt/IBM/InstallationManager/eclipse

Click **Next** to continue

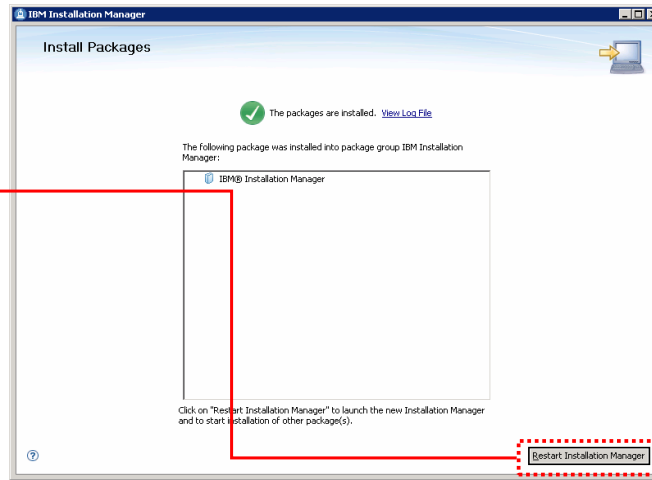
The wizard supplies a default installation directory for the Installation Manager files. It is a good practice to use the recommended default installation directory. Note that the sample directories given on this slide assume that you are installing as an administrative user. If you are installing as a non-administrative user, some user name information will also be a part of the installation path. Click Next on this panel to continue, and keep stepping through the wizard to complete the installation of the IBM Installation Manager.

## Install the IBM Installation Manager (3 of 3)

Continue through the panels to finish installing the Installation Manager

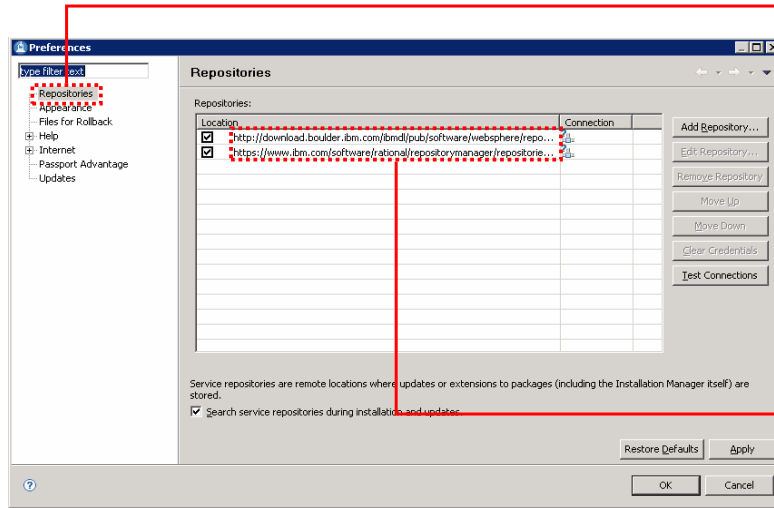
When the installation completes, restart the Installation Manager

If you are prompted to authenticate while the Installation Manager is restarting, log in with your IBM ID



When the installation completes, restart the Installation Manager by clicking the Restart Installation Manager button. While the Installation Manager is starting up, you are prompted for authentication credentials to access the preconfigured Web repository. If you are not using the Web repository, you can cancel out of the authentication panel and the Installation Manager will start, as normal. Otherwise, provide your IBM ID to authenticate to the remote repository. You can save your authentication credentials so that you do not need to log in again later to access the product repository.

## Check the product repository configuration



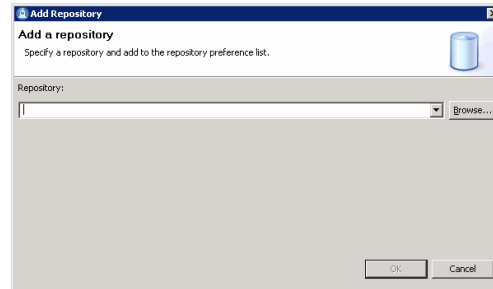
Go to **File > Preferences > Repositories** to see the list of repositories you have configured

Two remote WebSphere repositories are configured by default – if you are not installing from a remote repository, you can disable these repositories

After the Installation Manager restarts, you can check what repositories you have configured. Open up the File > Preferences > Repositories menu to see your repositories. Two remote WebSphere repositories are configured by default. If you are not installing from a remote repository, you can disable these repositories by removing the check mark in the box next to each repository in the list.

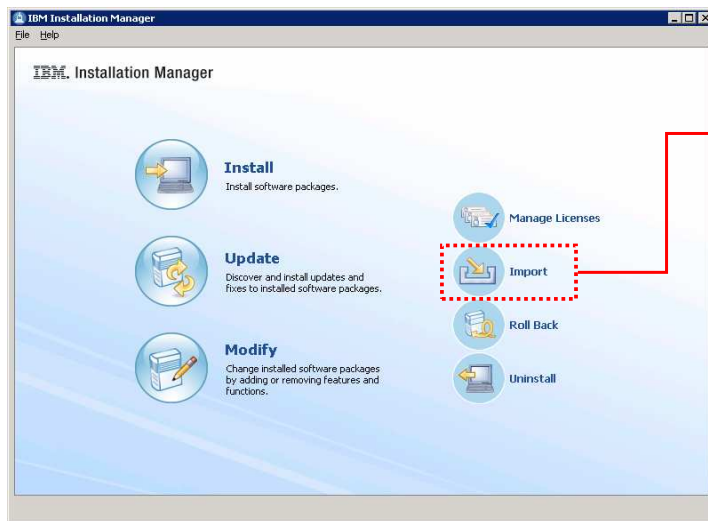
## Configure a local repository (optional)

- If you are installing on a system that does not have internet access, you need to download and configure a local repository
- Download the local repository package and decompress it
- Open the **File > Preferences > Repositories** menu in the Installation Manager
- Click the **Add Repository** button
- Provide the path to the local repository in the **Add a repository** panel



If you are installing on a system that does not have internet access, you need to download and configure a local repository. Download the local repository package to your system and decompress it. From the File > Preferences > Repositories menu in the Installation Manager, click the Add Repository button. In the Add a repository panel that comes up, provide the full path to the local repository that you want to use. You can either type in the path directly or browse to the repository location. Provide the repository path up to and including the repository.config file that defines the repository.

## Import the application server (1 of 3)



Click the **Import** button to open the import wizard

The Import button is only visible after a WebSphere repository has been added to the repository list

Before you can use Installation Manager to install any packages on top of WebSphere Application Server, you need to import the application server into the Installation Manager. Click the Import button to open the import wizard. The Import button is only visible after a WebSphere repository has been added to the repository list. If you do not see the Import button on the main Installation Manager, check your repository configuration to be sure you are pointing to a WebSphere repository.

## Import the application server (2 of 3)

Verify the shared resources directory you want to use for this installation, then click **Next**

Provide the installation directory for the WebSphere Application Server installation you want to associate with the Installation Manager, then click **Next**

15 Installation © 2010 IBM Corporation

To import an application server installation, you need to provide the installation directory for that instance of the application server. You can either browse to the location using a standard file selection window or type the full path into the Installation Directory field. After providing the path, click Next.

The next panel allows you to choose the shared resources directory for the Installation Manager. The shared resources directory contains files that can be shared by multiple packages. You can only select the shared resources directory the first time you install a package with the IBM Installation Manager. For best results, select the driver with the most available space because it must have adequate space for the shared resources of future packages. It is a good practice to use the recommended shared resources directory. Click Next to keep going through the import wizard.

## Import the application server (3 of 3)

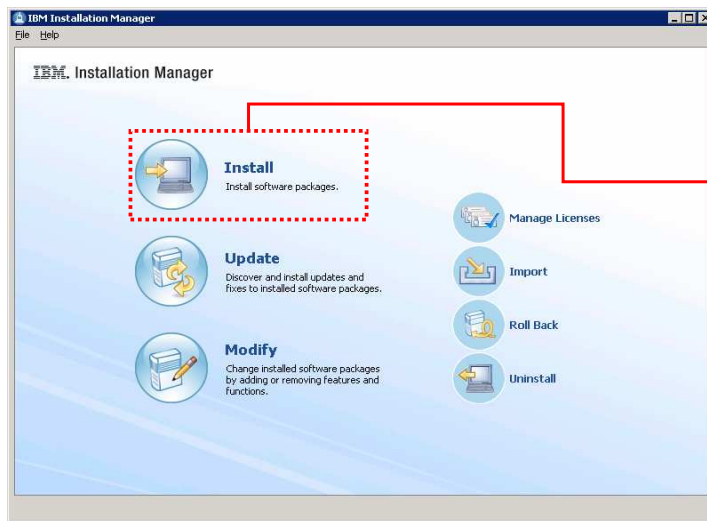
When the import operation completes, click **Finish** to return to the main panel of the Installation Manager

Verify that you are importing the correct package, then click **Import**

On the import verification panel, check the settings for the application server that you are importing, then click the Import button to import the application server into the Installation Manager. When the import operation completes, click Finish on the results panel to return to the main panel of the Installation Manager.



## Install the feature pack (1 of 5)



In the Installation Manager, click **Install**

You might be prompted to authenticate with your IBM ID if you are using the remote repository

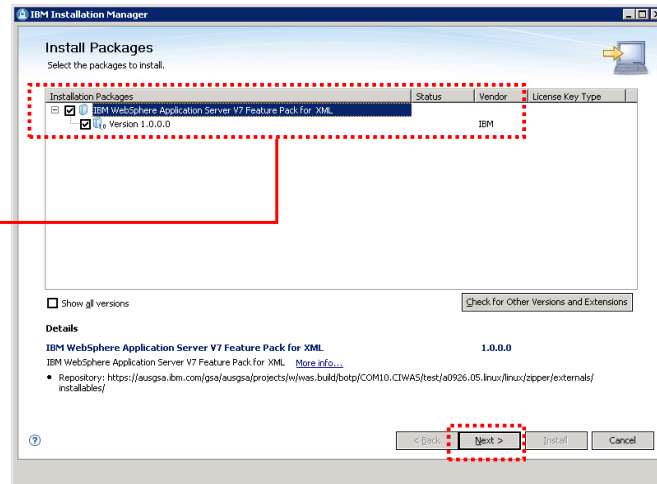
Now that the Installation Manager knows about the application server that you want to install the feature pack on top of, you can begin the feature pack installation. Click the Install button on the main panel of the Installation Manager to start the installation wizard. You might be prompted to authenticate if you are using a remote repository and do not have your authentication credentials saved. If so, authenticate with your IBM ID.

## Install the feature pack (2 of 5)

If you are connecting to the remote repository, you might see multiple packages listed

Choose the **IBM WebSphere Application Server Feature Pack for XML**, and click **Next**

On the next panel, accept the license agreement and continue

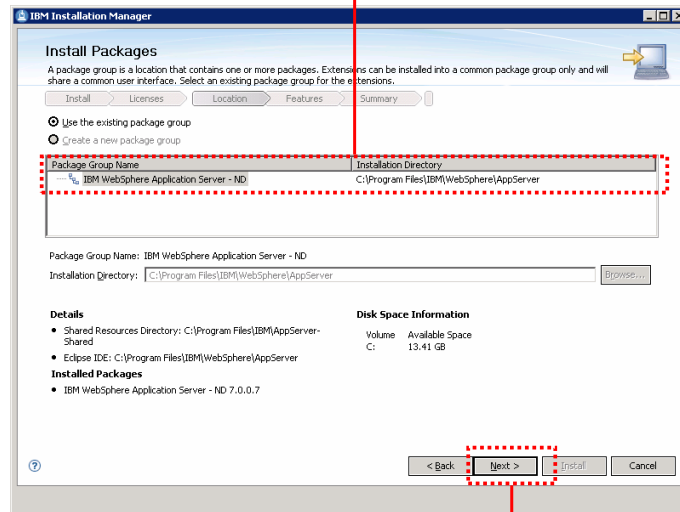


Depending on your repository configuration, you might see multiple installation packages listed on the Install Packages panel. If you are using the Web repository, you might see several feature packs included in the list. Choose the IBM WebSphere Application Server Feature Pack for XML from the list of packages, then click next. On the next panel, accept the license agreement and continue.

## Install the feature pack (3 of 5)

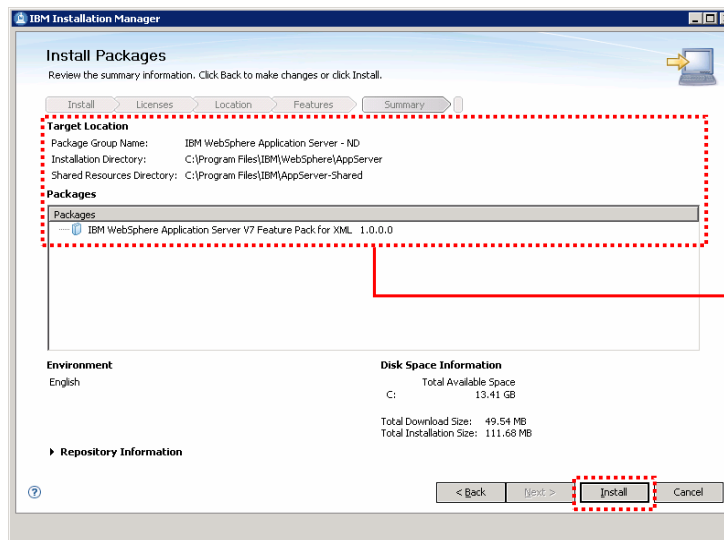
Verify that the feature pack is going to be installed into the correct package group. This should point to the WebSphere Application Server V7 installation that you imported into the Installation Manager

Click **Next** and continue through the panels to install the feature pack



Verify that the feature pack is going to be installed into the correct package group – this should point to the WebSphere Application Server V7 installation that you imported into the Installation Manager. Click Next and continue through the wizard to install the feature pack.

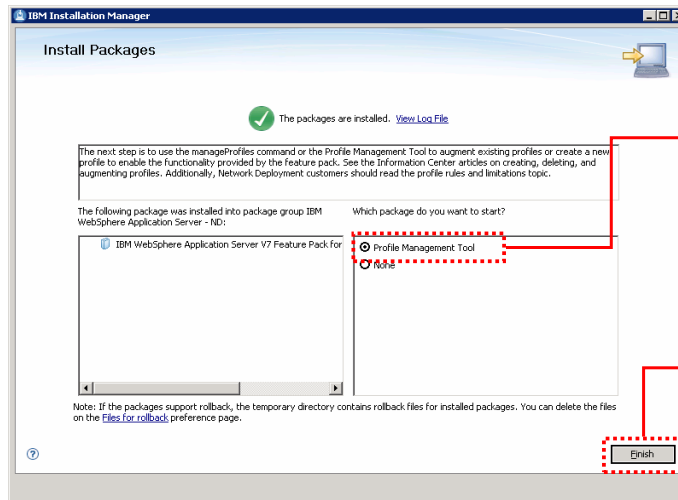
## Install the feature pack (4 of 5)



Verify the installation summary, then click **Install** to start the feature pack installation

On the final Install Packages panel, verify the installation summary, then click Install to start the feature pack installation. If you are installing from a remote repository, the Installation Manager downloads only the files that you need for your operating system, based on the features that you selected to install. The time for completing the download of the product files will vary depending on the size of the download and the throughput of your network. If you rather not wait for the product files to download during product installation, consider using a local product repository.

## Install the feature pack (5 of 5)



Optionally, choose to start the **Profile Management Tool** to perform XML profile configuration

Click **Finish** to go back to the main panel of the Installation Manager

When the installation completes, a success panel similar to the one shown here is displayed in the Installation Manager. Optionally, choose to start the Profile Management Tool (PMT) to perform XML profile configuration. The Profile Management Tool option is displayed even on platforms that do not support the PMT (for example, many 64-bit platforms); if you select to launch the PMT on any of those platforms, nothing happens. You can also choose not to do any profile configuration right away and come back later to create or augment profiles using either the PMT or the `manageprofiles` command. Click Finish to go back to the main panel of the Installation Manager.

## ***Profile management***

This section shows how to configure XML server profiles.

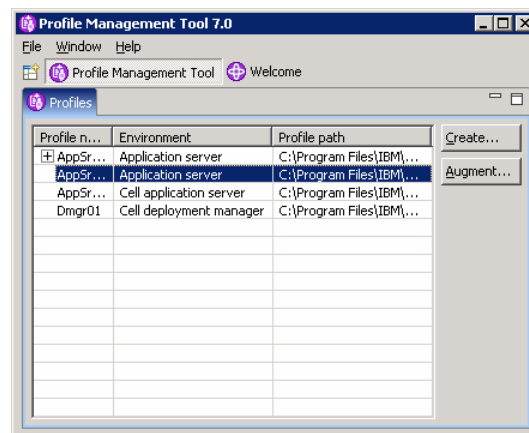
## Perform additional configuration actions

- Before using the XML feature pack, you need to configure your test environment by:
  - Creating or augmenting your profiles using a XML profile template

Before using the feature pack for XML, you need to configure your test environment by creating or augmenting a server profile using an XML template.

## XML profiles

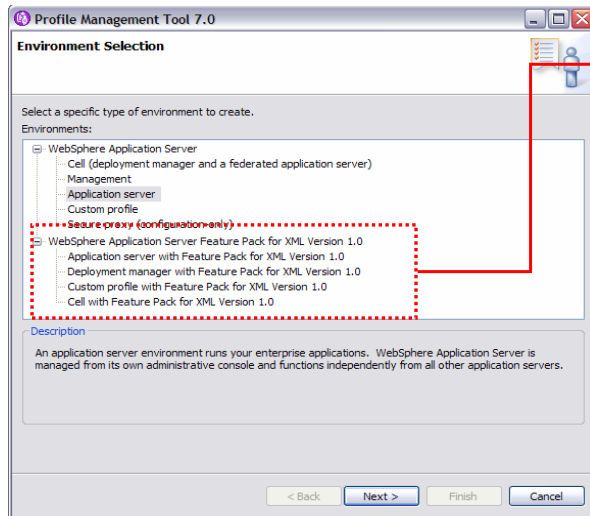
- A XML profile is required to use the new function in the feature pack
- Configure an XML profile by either:
  - Creating a new profile based on a XML template, or
  - Augmenting an existing profile with a XML template
- Profile creation and augmentation are supported in the Profile Management Tool (PMT) and using the `manageprofiles` command



In order to use the XML capability in the IBM WebSphere Application Server Feature Pack for XML, you need to have a WebSphere Application Server profile that has been enhanced to support XML. You can configure an XML profile by either creating a new profile based on an XML template, or by augmenting an existing profile with an XML template. Both profile creation and augmentation are supported in the Profile Management Tool (PMT) and using the `manageprofiles` command.



## Creating an XML profile



Four types of XML profiles are available:

- Application server
- Deployment manager
- Custom profile
- Cell

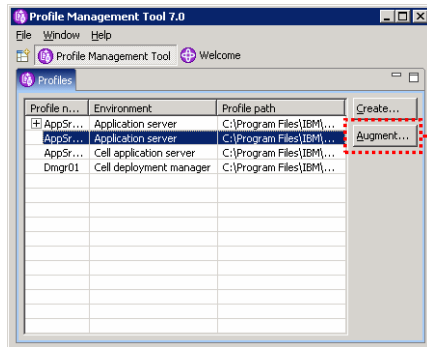
To create a XML profile in the PMT, select the profile type and continue through the tool, as normal

To create a XML profile from the command line, use one of the XML templates in `<WAS_HOME>/profileTemplates/XML`

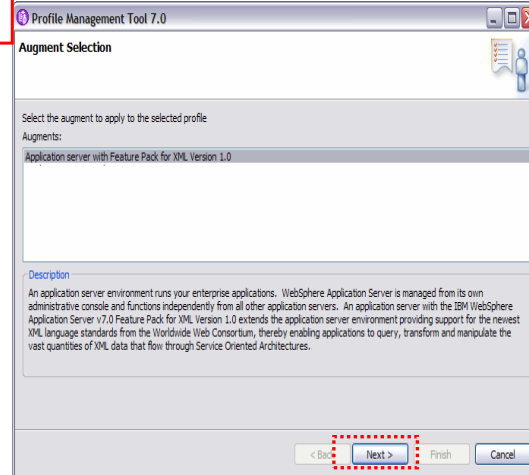
There are four types of XML profile templates included with the feature pack – application server, deployment manager, custom profile, and cell profile. To create a new XML profile, you can use either the PMT or the command line. To create a profile in the PMT, choose which profile type you want to create and continue through the tool, as normal. If you do not see the full list of XML profiles, expand the section titled WebSphere Application Server Feature Pack for XML Version 1.0 on the Environment Selection panel.

To create an XML profile from the command line, use the `manageprofiles` command as you normally do and supply one of the XML profile templates on the command. The XML templates are in the directory `<WAS_HOME>/profileTemplates/XML`.

## Augmenting a profile from the PMT



Choose the profile you want to augment from the profile list and click the **Augment** button



-Select the augmentation to apply to the profile (shown here), then click **Next**  
 -Review the summary panel then click **Augment** to run the profile augmentation

You can avoid creating new XML profiles by augmenting an existing profile in your WebSphere Application Server environment to use the XML function. Profile augmentation, like profile creation, is supported using both the PMT and the manageprofiles command. This page shows how to run profile augmentation using the PMT interface.

Start the Profile Management Tool, and highlight the profile you want to augment in the profile list. When you choose a profile that is available to be augmented, the Augment button on the right will activate. Click the Augment button. The next panel shows a list of the profile augmentations available. In this case, because you are augmenting a base application server profile, only the Application server with Feature Pack for XML Version 1.0 template is available. Highlight the profile augmentation that you want to apply, then click the Next button. The final panel (not shown) gives a summary of the profile augmentation that is being applied – just click Augment to run the augmentation process.

## Augmenting a profile from the command line

- The `manageprofiles` command can be used to augment profiles for use with the Feature Pack for XML
- **Sample command:** Augmenting an application server profile using the XML template:  

```
./manageprofiles.sh -augment -profileName AppSrv01 -templatePath  
../profileTemplates/XML/default.xmlfep
```

The `manageprofiles` command can also be used to augment profiles for use with the XML feature pack. The sample command on this slide shows syntax for augmenting an existing application server profile, `AppSrv01`, with the XML application server profile template. This syntax assumes that you are running the command out of the `<WAS_HOME>/bin` directory.

## ***Summary***

This section provides a summary of what you have learned in this presentation.

## Summary

- Use the IBM Installation Manager to install the WebSphere Application Server Feature Pack for XML
- The feature pack runs on top of WebSphere Application Server V7
- To install the feature pack:
  - Install the Installation Manager and configure product repositories, if needed
  - Import WebSphere Application Server into the Installation Manager
  - Install the feature pack on top of WebSphere Application Server

The IBM Installation Manager is the tool that you use to install the WebSphere Application Server Feature Pack for XML. The feature pack runs on top of WebSphere Application Server V7, at Fix Pack 7 or later. To install the feature pack, install the Installation Manager, import the application server, then install the feature pack on top of the application server.

## Reference

- Feature Pack for XML landing page  
<http://www.ibm.com/software/webservers/appserv/was/featurepacks/xml/>
- WebSphere Application Server V7 installation information  
[http://publib.boulder.ibm.com/infocenter/ieduasst/v1r1m0/index.jsp?topic=/com.ibm.iea.was\\_v7/was/7.0/InstallationAndMigration.html](http://publib.boulder.ibm.com/infocenter/ieduasst/v1r1m0/index.jsp?topic=/com.ibm.iea.was_v7/was/7.0/InstallationAndMigration.html)
- WebSphere Application Server V7 trial download  
<http://www.ibm.com/developerworks/downloads/ws/was/>
- WebSphere Application Server V7 supported hardware information  
<http://www.ibm.com/support/docview.wss?rs=180&uid=swg27012284>

This slide contains links to useful information.



## Feedback

Your feedback is valuable

You can help improve the quality of IBM Education Assistant content to better meet your needs by providing feedback.

- Did you find this module useful?
- Did it help you solve a problem or answer a question?
- Do you have suggestions for improvements?

Click to send e-mail feedback:

[mailto:iea@us.ibm.com?subject=Feedback\\_about\\_XMLFEP\\_Install.ppt](mailto:iea@us.ibm.com?subject=Feedback_about_XMLFEP_Install.ppt)

This module is also available in PDF format at: [XMLFEP\\_Install.pdf](XMLFEP_Install.pdf)

You can help improve the quality of IBM Education Assistant content by providing feedback.



## Trademarks, disclaimer, and copyright information

IBM, the IBM logo, ibm.com, and WebSphere are trademarks or registered trademarks of International Business Machines Corp., registered in many jurisdictions worldwide. Other product and service names might be trademarks of IBM or other companies. A current list of other IBM trademarks is available on the Web at "[Copyright and trademark information](http://www.ibm.com/legal/copytrade.shtml)" at <http://www.ibm.com/legal/copytrade.shtml>

THE INFORMATION CONTAINED IN THIS PRESENTATION IS PROVIDED FOR INFORMATIONAL PURPOSES ONLY. Linux is a registered trademark of Linus Torvalds in the United States, other countries, or both.

THE INFORMATION CONTAINED IN THIS PRESENTATION IS PROVIDED FOR INFORMATIONAL PURPOSES ONLY. WHILE EFFORTS WERE MADE TO VERIFY THE COMPLETENESS AND ACCURACY OF THE INFORMATION CONTAINED IN THIS PRESENTATION, IT IS PROVIDED "AS IS" WITHOUT WARRANTY OF ANY KIND, EXPRESS OR IMPLIED. IN ADDITION, THIS INFORMATION IS BASED ON IBM'S CURRENT PRODUCT PLANS AND STRATEGY, WHICH ARE SUBJECT TO CHANGE BY IBM WITHOUT NOTICE. IBM SHALL NOT BE RESPONSIBLE FOR ANY DAMAGES ARISING OUT OF THE USE OF, OR OTHERWISE RELATED TO, THIS PRESENTATION OR ANY OTHER DOCUMENTATION. NOTHING CONTAINED IN THIS PRESENTATION IS INTENDED TO, NOR SHALL HAVE THE EFFECT OF, CREATING ANY WARRANTIES OR REPRESENTATIONS FROM IBM (OR ITS SUPPLIERS OR LICENSORS), OR ALTERING THE TERMS AND CONDITIONS OF ANY AGREEMENT OR LICENSE GOVERNING THE USE OF IBM PRODUCTS OR SOFTWARE.

© Copyright International Business Machines Corporation 2010. All rights reserved.