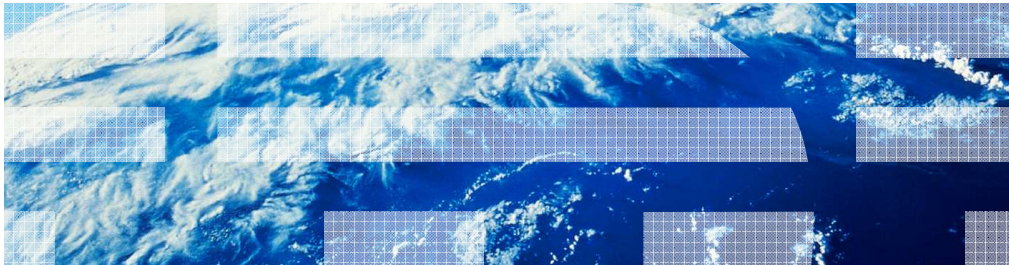


IBM Tivoli Endpoint Manager V8.2

Deploying a Tivoli Remote Control application server
from the IBM Tivoli Endpoint Manager console



© 2013 IBM Corporation

IBM Tivoli® Endpoint Manager V8.2, Deploying a Tivoli Remote Control Application Server
from the IBM Tivoli Endpoint Manager Console.

Objectives

After you complete this training module, you can deploy a Tivoli Remote Control application server from an IBM Tivoli Endpoint Manager console

After you complete this module, you can deploy a Tivoli Remote Control Application Server from an IBM Tivoli Endpoint Manager console.

Assumptions

The following assumptions are made:

- The system is deployed on one server that hosts both the Tivoli Remote Control (TRC) application server and the Microsoft SQL Server
- You use either Microsoft SQL Server 2005 or 2008 R2
- You use a clean installation with no previous TRC data

It is assumed that the deployment is on a single server that hosts both the TRC application server and Microsoft SQL Server. It is also assumed that you have a clean installation with no prior TRC data and that you are using either Microsoft SQL Server 2005 or Microsoft SQL Server 2008 R2.

Server back-end preinstallation tasks

- The server onto which the TRC server software is deployed must have a Microsoft SQL Server that is installed on it with mixed mode authentication
- You use the as account to establish the data connection between the TRC server software and the SQL Server software
- Ensure that the as account is active and the password is set. The sa account has all granted privileges by default over all databases that are created in SQL Server

Several preinstallation conditions must be verified before you deploy the Tivoli Remote Control software onto a server.

First, SQL Server software must already be installed with mixed mode authentication.

Second, an sa account must already be established for data connections between the TRC Server and the SQL server software applications. The sa account must be active with a valid user name and password, and have default settings which grant privileges over all databases created in SQL server.

Selecting a JDBC driver

- Download the JDBC driver software from Microsoft
- Use the driver to connect the TRC server software to the SQL Server software
- Microsoft provides these executable files:
 - Microsoft SQL Server JDBC Driver 3.0
sqljdbc_3.0.1301.101_enu.exe
 - Microsoft JDBC Driver 4.0 for SQL Server
sqljdbc_4.0.2206.100_enu.exe

Note: You can use either version, but version 3.0 is preferred

You can use either JDBC driver shown on the slide, but version 3.0 is preferred.

Downloading and extracting the JDBC driver application

- Download the SQL Server JDBC driver, copy it to the C:\ drive of the server, and extract it
- View the resulting directory structure:

C:\sqljdbc_3.0\enu

- Ensure that the full path to the JDBC driver for sqljdbc4.jar is as follows:

C:\sqljdbc_3.0\enu\sqljdbc4.jar



When you download and extract the JDBC driver, the directory structure is **C:\sqljdbc_3.0\enu**, and the full path to the JDBC driver is **C:\sqljdbc_3.0\enu\sqljdbc4.jar**.

Creating the TRC database file storage directory

- Create a location for the TRC database
- Create the following directory structure:

C:\sqldata\trcdb

- All Microsoft SQL Server files are stored as follows:

 TRCDB.mdf	1/15/2013 12:01 PM	MDF File	4,096 KB
 TRCDB_log.ldf	1/15/2013 12:01 PM	LDF File	1,024 KB

Create the directory **trcdb** for storage of the Microsoft SQL Server local and master data files.

Steps to deploy TRC from the IBM Tivoli Endpoint Manager console

Use these steps to deploy the TRC server from the IBM Tivoli Endpoint Manager console :

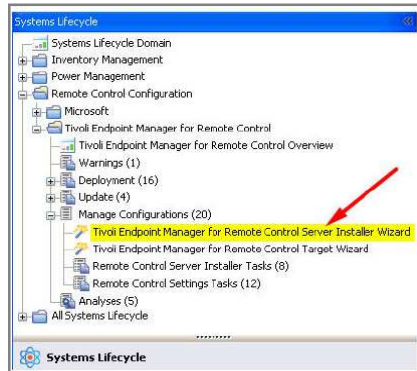
1. Create the Tivoli Endpoint Manager for Remote Control server installation task
2. Create a default server configuration

There are two major steps in deploying a TRC server from the IBM Tivoli Endpoint Manager console. First, you create the Tivoli Endpoint Manager for Remote Control Server installation task. Then, you create a default server configuration.

Initializing the TRC server installation wizard

Log in to IBM Tivoli Endpoint Manager V8.2 and accomplish these tasks:

1. Locate the **Tivoli Endpoint Manager for Remote Control Server Installer Wizard**
2. Initialize the installation wizard



Log in to IBM Tivoli Endpoint Manager and locate and start the Remote Control Server installation wizard.

Configuring the TRC server (1 of 3)

Create the default server configuration with the information listed in the next three tables

Windows radio button	<selected>
Installation Directory	c:\Program files\IBM\Tivoli\TRC\server
MSSQL 2005/2008 radio button	<selected>
Database server address	127.0.0.1
Port on which to connect to the database	1433
Name of database to use	TRCDB

To begin configuring the default settings for the Tivoli Remote Control server, set the database server address, database connection port, and database name as shown on the slide. The default installation directory is **C:\Program files\IBM\Tivoli\TRC\server** and both the Windows radio button and the MSSQL radio buttons are selected.

Configuring the TRC server (2 of 3)

Database Administrator User ID	sa
Database Administrator password	database password
Path to the JDBC drivers	C:\sqljdbc_3.0\enu\sqljdbc4.jar
if Local, create the database	<selected>
if Local, drop and existing database	<selected>
New database location (existing directory required)	c:\sqldata\trcdb
HTTPS as default setting for Target URL	<cleared>
Address of WebSphere® server	localhost

On this slide, the default TRC server configuration is displayed for the database administrator user ID and password. The location of the JDBC drivers and database are also shown. You need to make sure to select the **if Local create the database** and the **if Local, drop existing database** options. Also, ensure that the address of the WebSphere server is displayed, and the **HTTPS as Default for the Target URL** option is cleared.

Configuring the TRC server (3 of 3)

Web path of URL	trc
HTTP port	80
HTTPS port	443
Administrator email	Insert email here
Enable FIPS	<cleared>
Adjust some advanced web parameters	<cleared>

On this slide, you see the web path URL, HTTP port, HTTPS port, and administrator email. By default, the **Enable FIPS** and **Adjust some advanced web parameters** options are cleared.

TRC server configuration sample

Installation Directory: C:\Program Files\IBM\Tivoli\TRC\server

Derby
 DB2 v8.x
 DB2 v9.x
 MSSQL 2000
 MSSQL 2005/2008

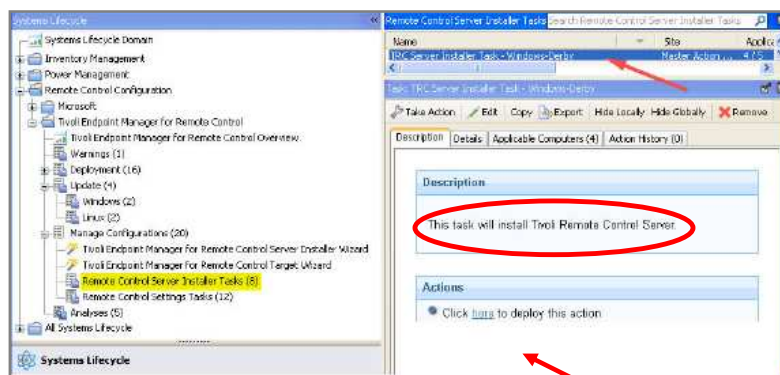
Database server address: 127.0.0.1
 Port on which to connect to the database: 1433
 Name of the Database to use: TRCDB
 Database Administrator Userid: sa
 Database Administrator Password: cesare08
 Path to the JDBC drivers: c:\sqljdbc_3.0\enu\sqljdbc4.jar
 If Local, create the database
 If local, drop an existing database
 New database location (existing directory required): c:\sqldata\trcdb

HTTPS as Default for Target URL
 Address of the WebSphere server: localhost
 Web path of URL: trc
 HTTP port: 80
 HTTPS port: 443
 Administrator email: francy@it.ibm.com
 Enable FIPS
 Adjust some advanced web parameters

On this slide, you see an example of the TRC server configuration. The installation directory path in this example is **C:\Program Files\IBM\Tivoli\TRC\server**.

Deploying remote server installer tasks

Click **Remote Control Server Installer Tasks**. The tasks are now ready to be used to deploy to the designated Windows server of your choice



Return to the Systems Lifecycle domain and click **Remote Control Server Installer Tasks**. You can now begin to deploy the tasks to the Windows server of your choice. Click the **here** link under **Actions**.

Deploying TRC server using the installation task

- Install your Tivoli Remote Control server by using the installation task that you configured and created
- Deploy this task and wait for its completion

Install your Tivoli Remote Control Server by using the installation task that you configured and created, and then deploy the task and wait for completion.

Summary

Now that you have completed this training module, you can deploy a Tivoli Remote Control Server from an IBM Tivoli Endpoint Manager console

Now that you have completed this training module, you can deploy a Tivoli Remote Control Server from an IBM Tivoli Endpoint Manager console.

Feedback

Your feedback is valuable

You can help improve the quality of IBM Education Assistant content to better meet your needs by providing feedback.

- Did you find this module useful?
- Did it help you solve a problem or answer a question?
- Do you have suggestions for improvements?

Click to send email feedback:

mailto:iea@us.ibm.com?subject=Feedback_about_deploy_trc_iem.ppt

This module is also available in PDF format at: ../deploy_trc_iem.pdf

You can help improve the quality of IBM Education Assistant content by providing feedback.



Trademarks, disclaimer, and copyright information

IBM, the IBM logo, ibm.com, Tivoli, and WebSphere are trademarks or registered trademarks of International Business Machines Corp., registered in many jurisdictions worldwide. Other product and service names might be trademarks of IBM or other companies. A current list of other IBM trademarks is available on the web at "[Copyright and trademark information](http://www.ibm.com/legal/copytrade.shtml)" at <http://www.ibm.com/legal/copytrade.shtml>

Microsoft, Windows, and the Windows logo are registered trademarks of Microsoft Corporation in the United States, other countries, or both.

Other company, product, or service names may be trademarks or service marks of others.

THE INFORMATION CONTAINED IN THIS PRESENTATION IS PROVIDED FOR INFORMATIONAL PURPOSES ONLY. WHILE EFFORTS WERE MADE TO VERIFY THE COMPLETENESS AND ACCURACY OF THE INFORMATION CONTAINED IN THIS PRESENTATION, IT IS PROVIDED "AS IS" WITHOUT WARRANTY OF ANY KIND, EXPRESS OR IMPLIED. IN ADDITION, THIS INFORMATION IS BASED ON IBM'S CURRENT PRODUCT PLANS AND STRATEGY, WHICH ARE SUBJECT TO CHANGE BY IBM WITHOUT NOTICE. IBM SHALL NOT BE RESPONSIBLE FOR ANY DAMAGES ARISING OUT OF THE USE OF, OR OTHERWISE RELATED TO, THIS PRESENTATION OR ANY OTHER DOCUMENTATION. NOTHING CONTAINED IN THIS PRESENTATION IS INTENDED TO, NOR SHALL HAVE THE EFFECT OF, CREATING ANY WARRANTIES OR REPRESENTATIONS FROM IBM (OR ITS SUPPLIERS OR LICENSORS), OR ALTERING THE TERMS AND CONDITIONS OF ANY AGREEMENT OR LICENSE GOVERNING THE USE OF IBM PRODUCTS OR SOFTWARE.

© Copyright International Business Machines Corporation 2013. All rights reserved.