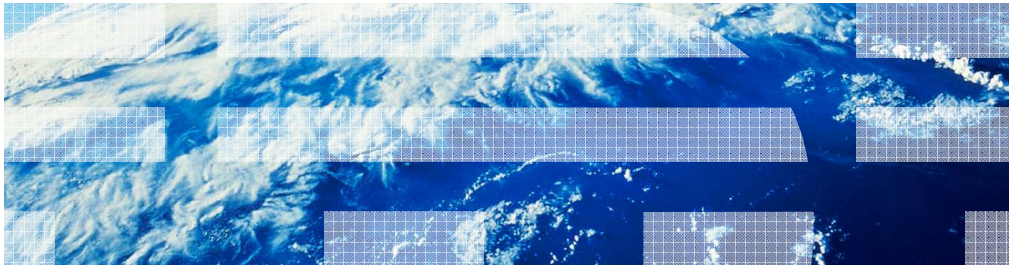


IBM Tivoli Endpoint Manager V8.1

Basic Relevance



© 2012 IBM Corporation

In this module, you learn about basic relevance.

Assumptions

- You are familiar with Tivoli® Endpoint Manager 8.1

Assumptions.

An assumption for this module is that you are familiar with Tivoli Endpoint Manager 8.1.

Objectives

When you complete this module, you can perform these tasks:

- Describe the Relevance language
- Download and install Fixlet® Debugger
- Find Fixlet Debugger documentation
- Describe Relevance usage
 - Determine applicability of fixlets, tasks, and baselines
 - Describe inline action scripts
 - Describe retrieved properties
 - Describe analysis
 - Describe reports

Objectives.

When you complete this module, you can describe the Relevance language, download and install Fixlet Debugger, find Fixlet Debugger documentation. You can describe Relevance usage, including determining the applicability of fixlets, tasks, and baselines. You can also describe inline action scripts, retrieved properties, analysis, and reports.

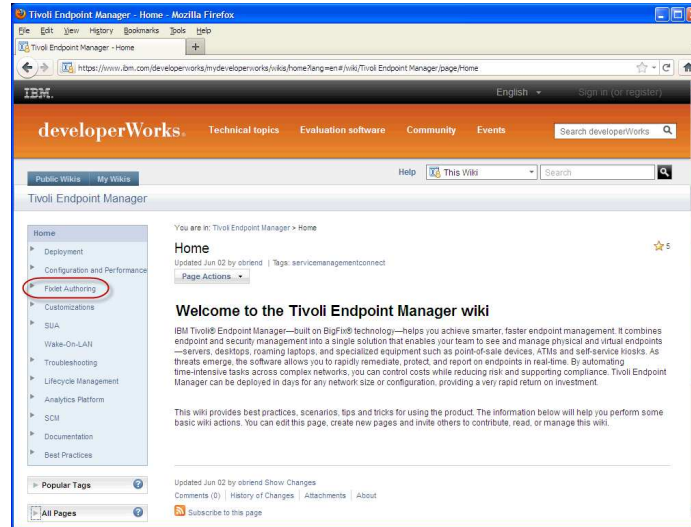
Relevance explanation

- Relevance is a patented, object oriented, interpreted query language. The language uses fixlets to access key properties of the hardware and software environment running the Tivoli Endpoint Manager agent. It determines the applicability of fixlets.
 - File system
 - Registry
 - Networking
 - Attributes exposed through Windows Management Implementation (WMI)
- Relevance is read-only; pure Relevance cannot be used to change the host system
- The QnA utility is a stand-alone debugger for Relevance code
 - <https://www.ibm.com/developerworks/mydeveloperworks/wikis/home?lang=en#/wiki/Tivoli%20Endpoint%20Manager/page/Fixlet%20Authoring>
- The Tivoli Endpoint Manager agent runs Relevance as the system user, not as the currently logged in user.

Relevance explanation.

The relevance language is used to ask a question of the properties, installations, registry, and other information about the client. The relevance language does not apply data to the client, but the result of the query determines whether an action can be applied to the client. Key points to relevance are shown. Note: The Relevance debugger is different from the Relevance agent, but most tasks can be achieved through the Relevance debugger. The Relevance agent includes additional security features. The Relevance language was created by BigFix to solve the problem of there being no existing language at the time the software was created that can adequately pull computer properties.

Tivoli Endpoint Manager home page



5

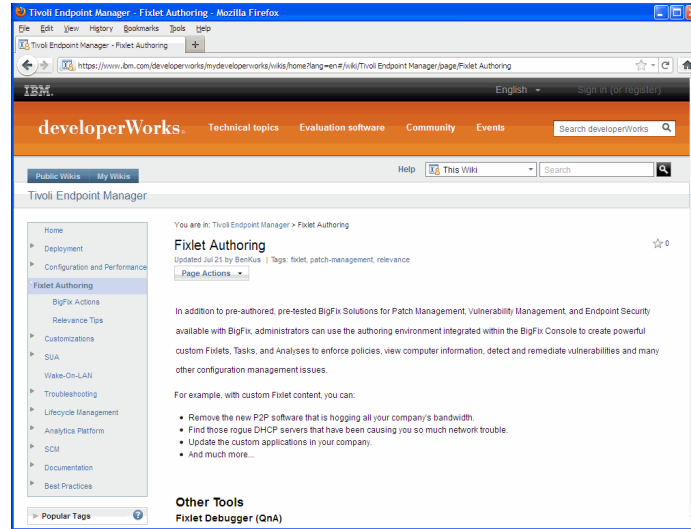
Basic Relevance

© 2012 IBM Corporation

Tivoli Endpoint Manager homepage.

The Tivoli Endpoint Manager homepage is shown. Click **Fixlet Authoring** to go to the Fixlet Authoring page.

Download Fixlet Debugger (1 of 2)



6

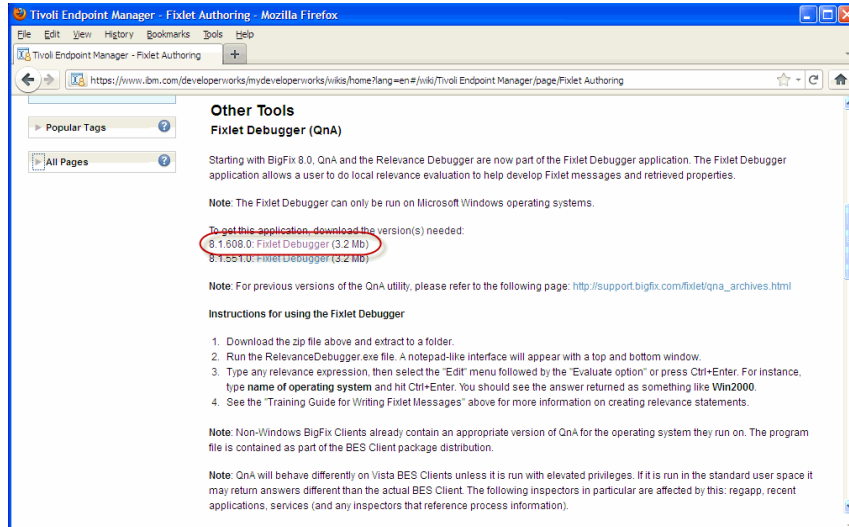
Basic Relevance

© 2012 IBM Corporation

Download Fixlet Debugger (1 of 2).

Scroll down on the Fixlet Authoring page to **Other Tools; Fixlet Debugger (QnA)**.

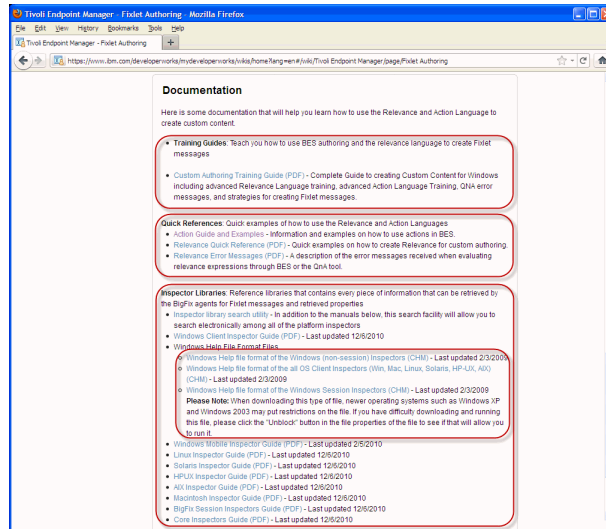
Download Fixlet Debugger (2 of 2)



Download Fixlet Debugger (2 of 2).

Click the 8.1.608.0 version of Fixlet Debugger, save the file to the desktop, and expand the compressed file. There are two different versions of the Fixlet Debugger to download. The Fixlet Debugger works on other versions of Tivoli Endpoint Manager Client other than the ones indicated.

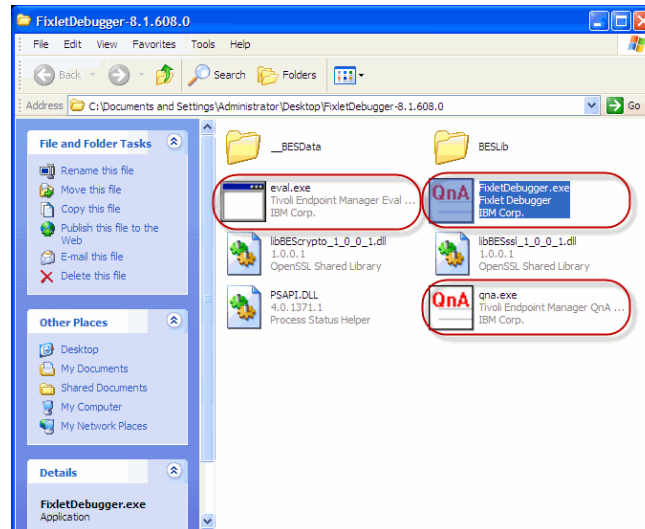
Fixlet Debugger documentation



Fixlet Debugger documentation.

Scroll down on the Fixlet Authoring page to view how to access the training guide, quick references, and inspector libraries. Note: The inspector libraries include the Windows help file format files. The Windows help file format files include the Windows Help file format of the Windows Inspectors. The files also contain the Windows Help file format of the all OS Client Inspectors, and the Windows Help file format of the Windows Session Inspectors. The Windows Help file format files of the Windows Inspectors contains all the Windows Inspectors. The Windows Help file format of all the OS Client Inspectors contains all inspectors on every operating system. The Windows Session Inspectors access the Tivoli Endpoint Manager database and differ from the OS Client Inspectors.

Fixlet Debugger installation



9

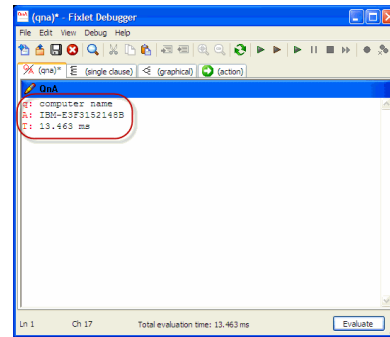
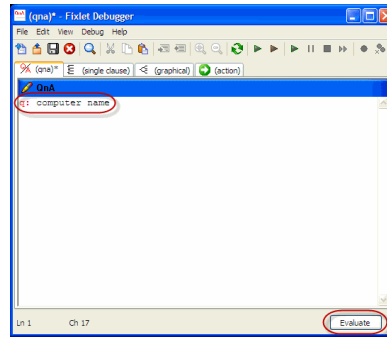
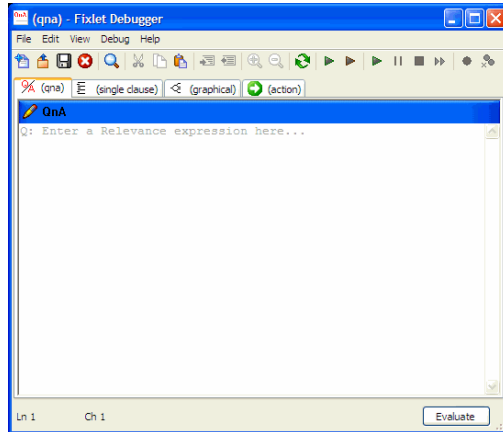
Basic Relevance

© 2012 IBM Corporation

Fixlet Debugger installation.

Click the 8.1.608.0 version of Fixlet Debugger, save the file to the desktop, and expand the compressed file. **qna.exe** is an older less full featured version of **FixletDebugger.exe**. **eval.exe** is part of an action script debugger and is not designed to be run independently. **FixletDebugger.exe** is a stand-alone application and does not need a Tivoli Endpoint Manager agent to be installed. **FixletDebugger.exe** is contained locally in the **FixletDebugger-8.1.608.0** folder and does not need to be installed. It can be run from a network share and run from a network. **FixletDebugger.exe** does not need to be installed locally. Double-click **FixletDebugger.exe** to start FixletDebugger.

Fixlet Debugger question



10

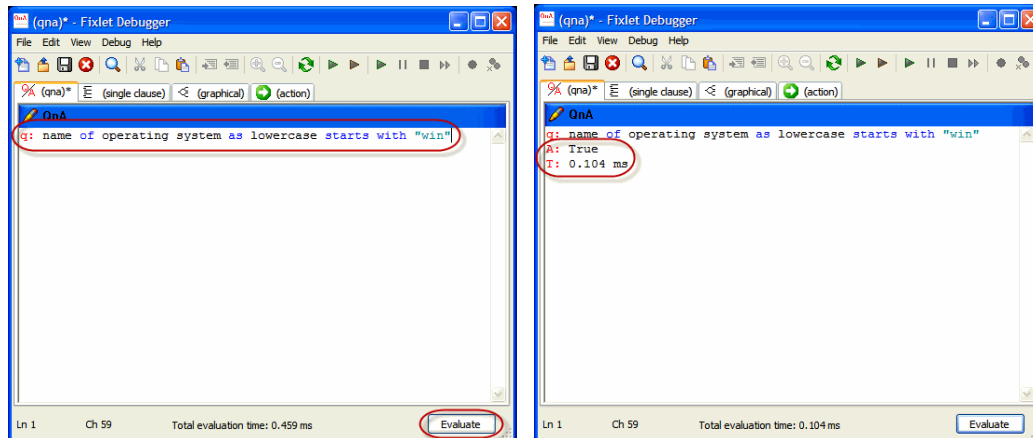
Basic Relevance

© 2012 IBM Corporation

Fixlet Debugger question.

This view is a free text form that requires you to type q: for any question. Type **q: computer name** to enter a question and click **Evaluate** to perform a sample question. The **q:** states to qna that you are asking a question. The result of the question is shown.

Fixlet Debugger question example



11

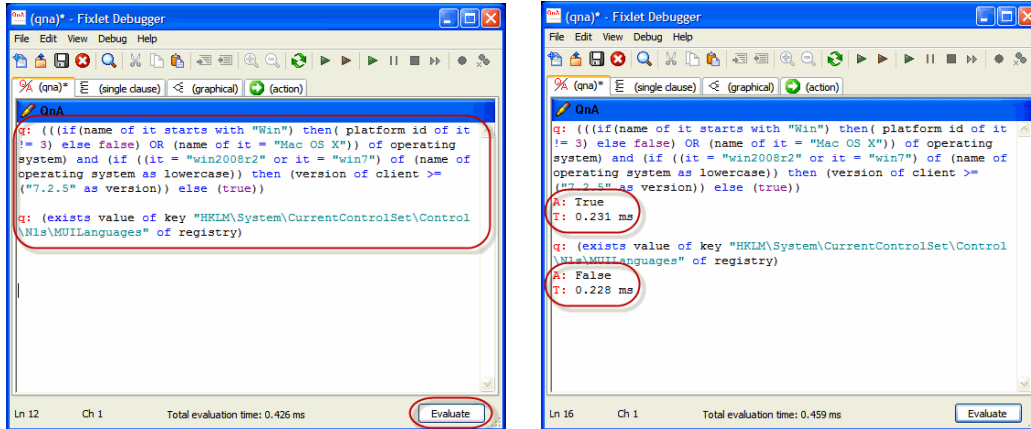
Basic Relevance

© 2012 IBM Corporation

Fixlet Debugger question example.

Type **q: name of operating system as lowercase starts with "win"** to enter the question and click **Evaluate** to ask the question. The result of the question is shown. The example shows a true or false answer to a relevancy question to explain how the relevance language determines if a fixlet is relevant to be applied. You can use questions similar to this to determine if a fixlet is enabled or disabled for a client on the Tivoli Endpoint Manager Console.

Real world example



Real world example.

Two real world example questions are shown to check for several operating systems, the version of Tivoli Endpoint Manager, and to check for a particular string in the Windows registry. Click **Evaluate**. The results are shown.

Relevance usage

- Determining the applicability of fixlets, tasks, baselines
 - A fixlet determines whether it must run on an endpoint
- Inline in action scripts
 - Provides information to actions, for example: location of Windows folder.
- Retrieved properties
 - Calculates information that can be shown as columns in the console
- Analyses
 - Complex values are calculated on a set of endpoints
- Reports
 - Relevance that can be evaluated across multiple endpoints

Relevance usage.

Relevance can be used to determine the applicability of fixlets, tasks and baselines. A fixlet question can define a missing patch, incorrect setting on the operating system or in an application, registry setting, network condition, or hardware issue. The question result decides if certain content should be run on an endpoint. Relevance can be used in action scripts to determine if the action statement runs. Relevance can be used in retrieved properties. Fixlets, tasks and baseline relevance need to be true or false. Retrieved properties permit answers besides true or false as in computer name. Analysis is a set of retrieved properties. Analysis is less global, less expensive, and more easily controlled than retrieved properties. Relevance can be evaluated across multiple endpoints in reports. Relevance statements are fairly easy to understand when reading, and typically do not require a developer to understand the meaning of what the language is testing for.

Summary

Now that you have completed this module, you can perform these tasks:

- Describe the Relevance language
- Download and install Fixlet Debugger
- Find Fixlet Debugger documentation
- Describe Relevance usage
 - Determine applicability of fixlets, tasks, and baselines
 - Describe inline action scripts
 - Describe retrieved properties
 - Describe analysis
 - Describe reports

Summary.

Now that you have completed this module, you can describe the Relevance language, download and install Fixlet Debugger, find Fixlet Debugger documentation. You can also describe Relevance usage, including determining the applicability of fixlets, tasks, and baselines. You can also describe inline action scripts, retrieved properties, analysis, and reports.

Feedback

Your feedback is valuable

You can help improve the quality of IBM Education Assistant content to better meet your needs by providing feedback.

- Did you find this module useful?
- Did it help you solve a problem or answer a question?
- Do you have suggestions for improvements?

Click to send email feedback:

mailto:iea@us.ibm.com?subject=Feedback_about_basic_revelance.ppt

This module is also available in PDF format at: [../basic_revelance.pdf](http://basic_revelance.pdf)

You can help improve the quality of IBM Education Assistant content by providing feedback.



Trademarks, disclaimer, and copyright information

IBM, the IBM logo, ibm.com, Fixlet, and Tivoli are trademarks or registered trademarks of International Business Machines Corp., registered in many jurisdictions worldwide. Other product and service names might be trademarks of IBM or other companies. A current list of other IBM trademarks is available on the web at "[Copyright and trademark information](http://www.ibm.com/legal/copytrade.shtml)" at <http://www.ibm.com/legal/copytrade.shtml>

THE INFORMATION CONTAINED IN THIS PRESENTATION IS PROVIDED FOR INFORMATIONAL PURPOSES ONLY. Other company, product, or service names may be trademarks or service marks of others.

THE INFORMATION CONTAINED IN THIS PRESENTATION IS PROVIDED FOR INFORMATIONAL PURPOSES ONLY. WHILE EFFORTS WERE MADE TO VERIFY THE COMPLETENESS AND ACCURACY OF THE INFORMATION CONTAINED IN THIS PRESENTATION, IT IS PROVIDED "AS IS" WITHOUT WARRANTY OF ANY KIND, EXPRESS OR IMPLIED. IN ADDITION, THIS INFORMATION IS BASED ON IBM'S CURRENT PRODUCT PLANS AND STRATEGY, WHICH ARE SUBJECT TO CHANGE BY IBM WITHOUT NOTICE. IBM SHALL NOT BE RESPONSIBLE FOR ANY DAMAGES ARISING OUT OF THE USE OF, OR OTHERWISE RELATED TO, THIS PRESENTATION OR ANY OTHER DOCUMENTATION. NOTHING CONTAINED IN THIS PRESENTATION IS INTENDED TO, NOR SHALL HAVE THE EFFECT OF, CREATING ANY WARRANTIES OR REPRESENTATIONS FROM IBM (OR ITS SUPPLIERS OR LICENSORS), OR ALTERING THE TERMS AND CONDITIONS OF ANY AGREEMENT OR LICENSE GOVERNING THE USE OF IBM PRODUCTS OR SOFTWARE.

© Copyright International Business Machines Corporation 2012. All rights reserved.