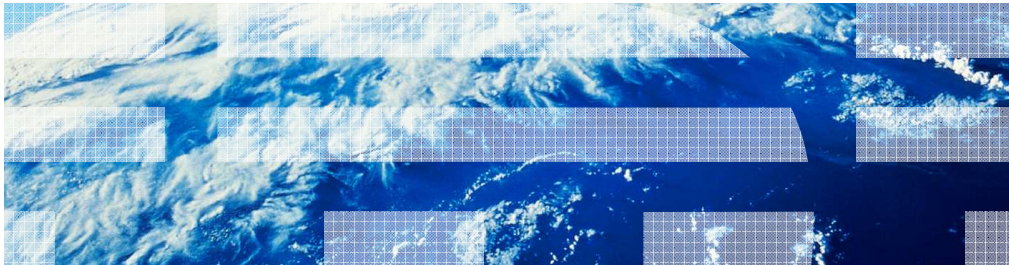


# IBM Tivoli Endpoint Manager V8.1

## Location property wizard



© 2011 IBM Corporation

In this module, you learn about the location property wizard.

## Assumptions

- You are familiar with Tivoli® Endpoint Manager 8.1

### **Assumptions.**

An assumption for this module is that you are familiar with Tivoli Endpoint Manager 8.1.

## Objectives

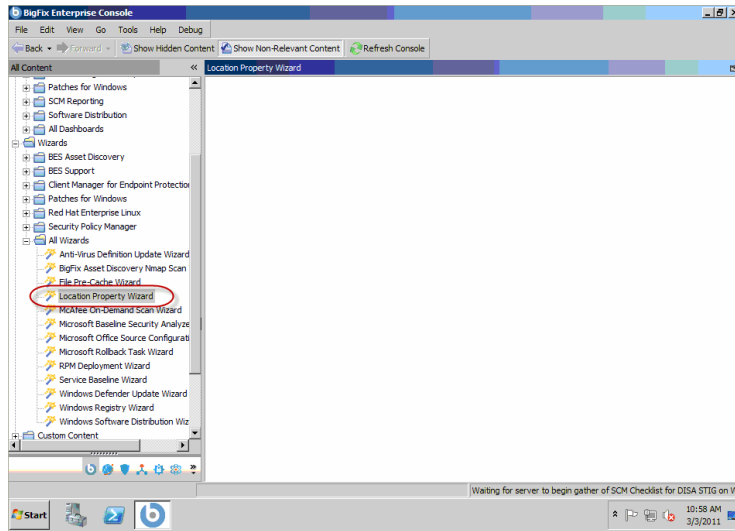
When you complete this module, you can perform these tasks:

- Describe the location property wizard
- Start the location property wizard
- Describe retrieved property names, relevance expressions, and key value pairs
- Add a subnet
- Describe key value pair errors and the location property wizard additional options
- Describe how to use the location property wizard to create a global parameter

### **Objectives.**

When you complete this module, you can describe the location property wizard, and how to start it. You can describe retrieved property names, relevance expressions, and key value pairs. You can add a subnet. You can describe key value pair errors, the location property wizard additional options, and how to use the location property wizard to create a global parameter.

## Starting the location property wizard



4

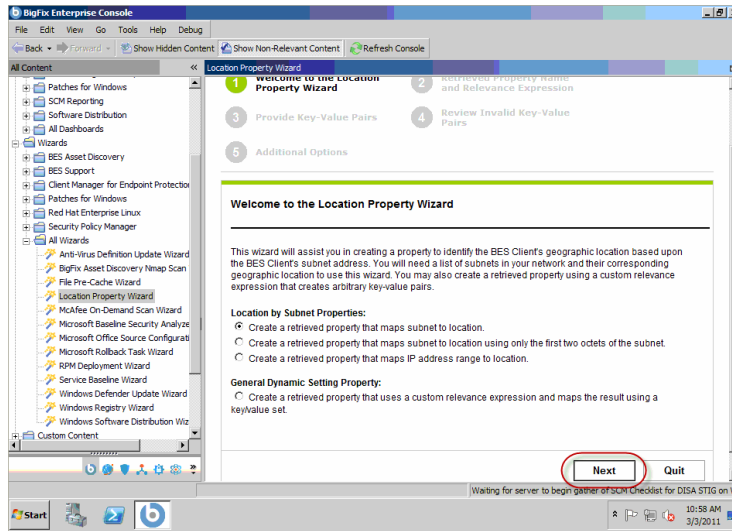
Location property wizard

© 2011 IBM Corporation

### Starting the location property wizard.

You can assign names to your subnet using the location property wizard. Click **Location Property Wizard**.

## Welcome to the Location Property Wizard page



5

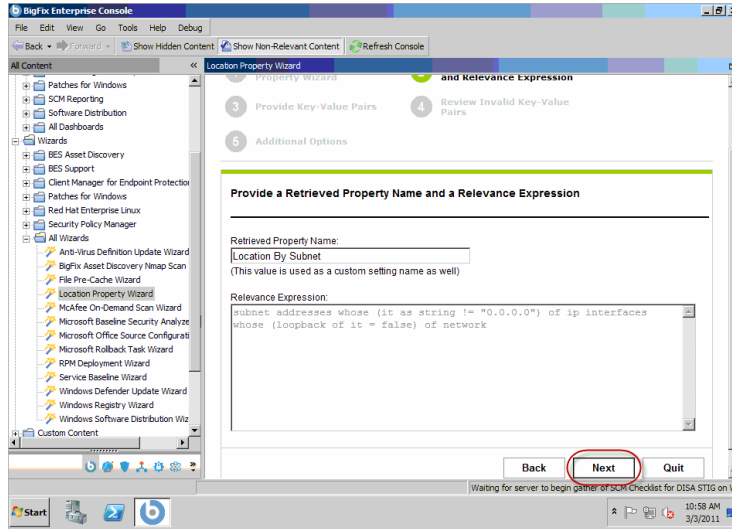
Location property wizard

© 2011 IBM Corporation

**Welcome to the Location Property Wizard page.**

The Welcome to the Location Property Wizard page is shown. Click **Next**.

## Provide a Retrieved Property Name and a Relevance Expression page



5

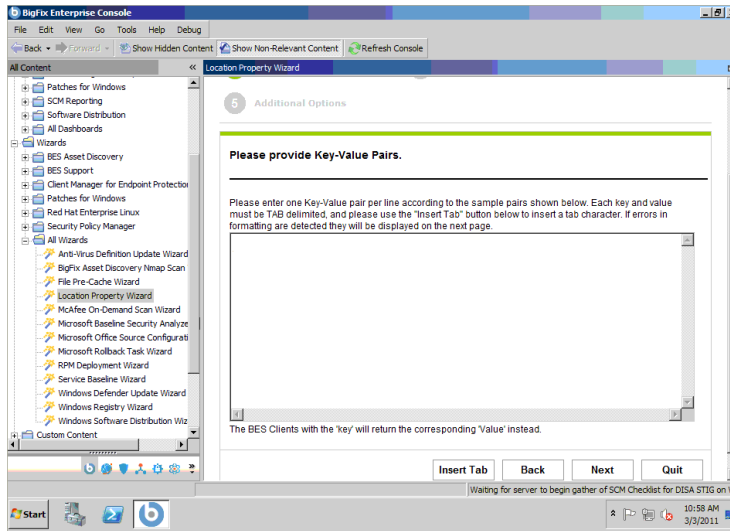
Location property wizard

© 2011 IBM Corporation

### Provide a Retrieved Property Name and a Relevance Expression page.

The Provide a Retrieved Property Name and a Relevance Expression page is shown. Click **Next**.

## Please provide Key-Value Pairs page



7

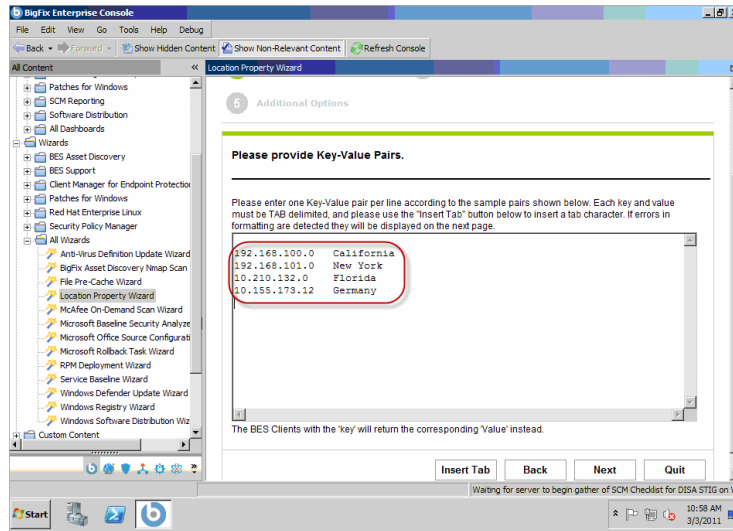
Location property wizard

© 2011 IBM Corporation

### Please Provide Key-Value Pairs page.

The Provide Key Value Pairs page is shown.

## Provide key value pairs example



j

Location property wizard

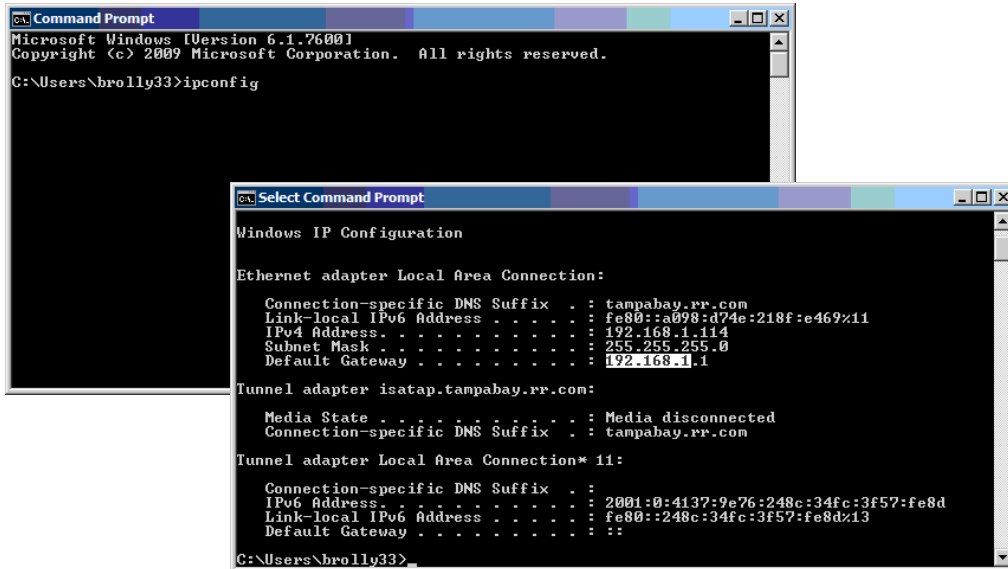
© 2011 IBM Corporation

### Provide key value pairs example.

An example of key value pairs is shown. You can maintain a list of subnets to locations. You can cut and paste the needed key value pairs from a spreadsheet to this page. The keys and values must be tab delimited, meaning a tab separates the IP address key from the value name.



## Adding a subnet



```
Microsoft Windows [Version 6.1.7600]
Copyright (c) 2009 Microsoft Corporation. All rights reserved.

C:\Users\brolly33>ipconfig

Windows IP Configuration

Ethernet adapter Local Area Connection:

    Connection-specific DNS Suffix  . : tampabay.rr.com
    Link-local IPv6 Address . . . . . : fe80::a098:d74e:218f:e469%11
    IPv4 Address. . . . . : 192.168.1.114
    Subnet Mask . . . . . : 255.255.255.0
    Default Gateway . . . . . : 192.168.1.1

Tunnel adapter isatap.tampabay.rr.com:

    Media State . . . . . : Media disconnected
    Connection-specific DNS Suffix  . : tampabay.rr.com

Tunnel adapter Local Area Connection* 11:

    Connection-specific DNS Suffix  . :
    IPv6 Address. . . . . : 2001:0:4137:9e76:248c:34fc:3f57:fe8d
    Link-local IPv6 Address . . . . . : fe80::248c:34fc:3f57:fe8d%13
    Default Gateway . . . . . : ::

C:\Users\brolly33>
```

9

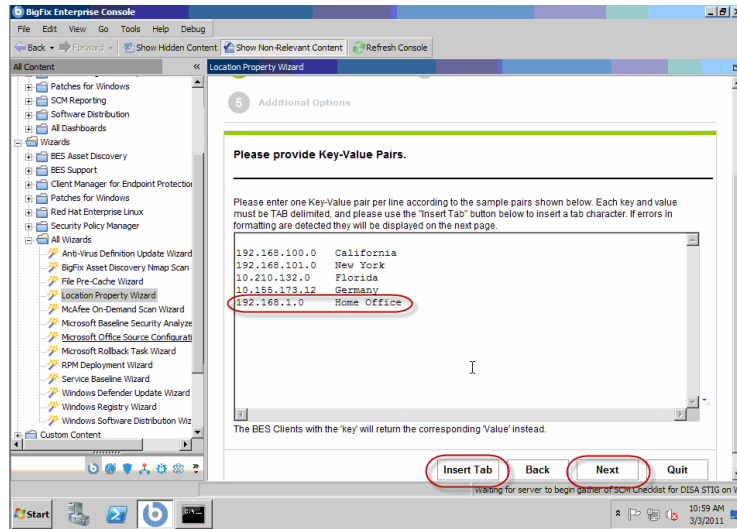
Location property wizard

© 2011 IBM Corporation

### Adding a subnet.

You can open a command prompt and run **ipconfig** to see your home office. Copy and paste the IP address to the Provide Key Value Pairs page.

## Add home subnet example



10

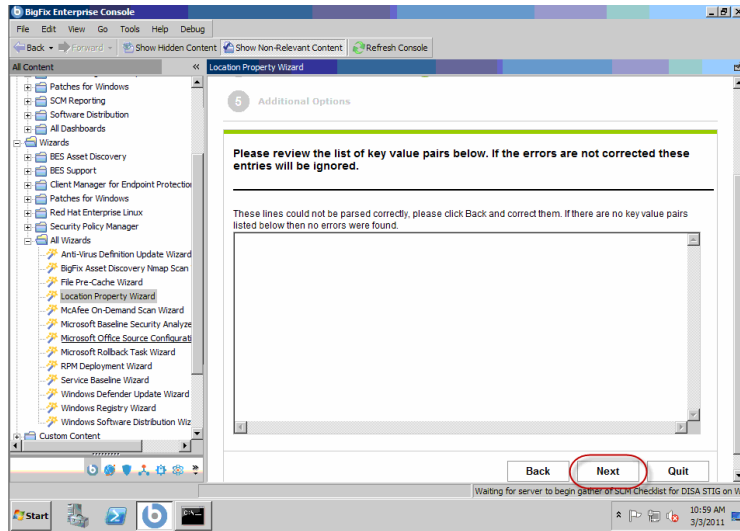
Location property wizard

© 2011 IBM Corporation

### Add home subnet example.

Using the IP address obtained from the **ipconfig** command, enter the IP address **192.168.1.0**. Click **Insert Tab** to enter a tab delimiter. Enter **Home Office**. Click **Next**.

## Key value pair errors page



17

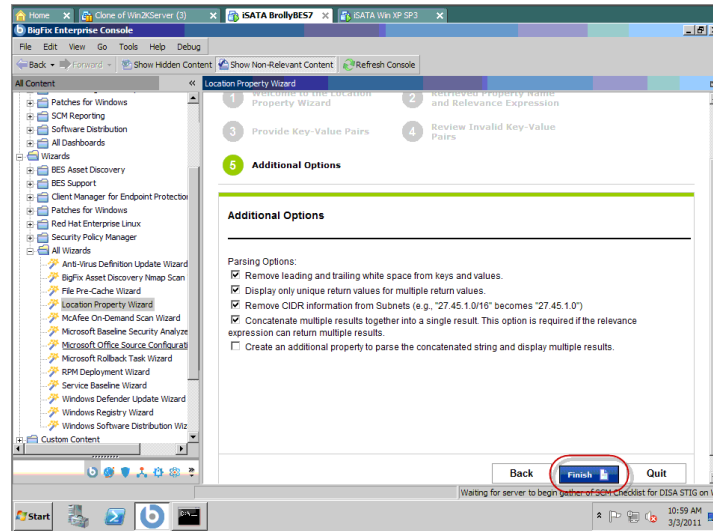
Location property wizard

© 2011 IBM Corporation

### Key value pair errors page.

Key value pair errors are shown on this page. There are no errors. Click **Next**.

## Additional Options page



12

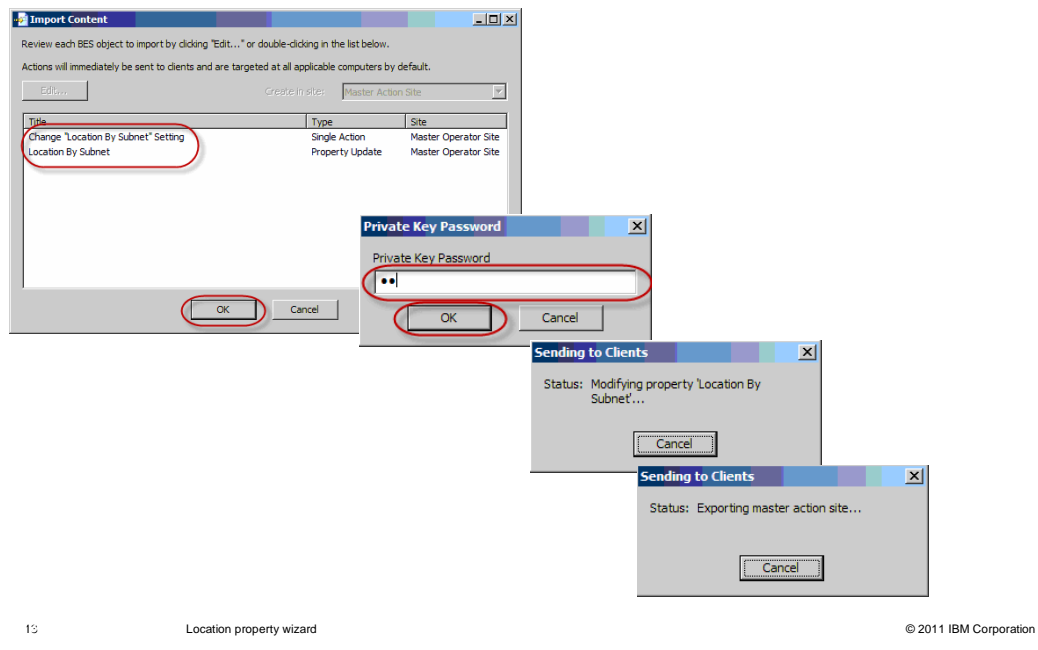
Location property wizard

© 2011 IBM Corporation

### Additional Options page.

Additional options are shown. Click **Finish**.

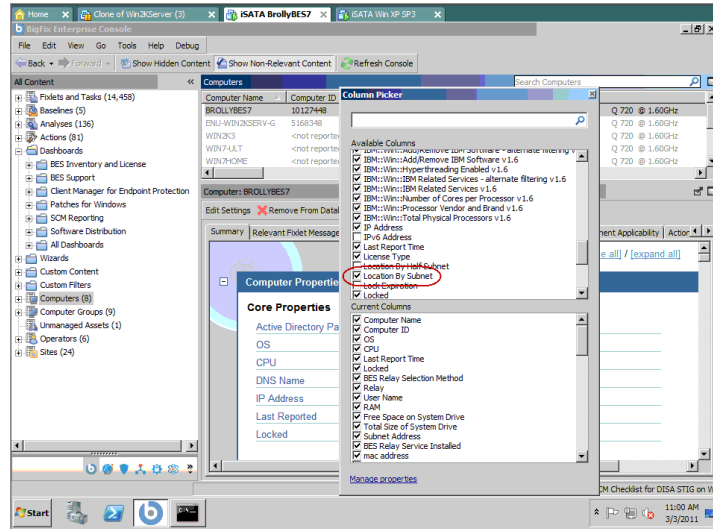
## Import Content window



### Import Content window.

The information shows the creation of a location by the properties setting on the endpoints. A property is created so that you can see the results in the console. Click **OK**. Enter your Private Key Password. Click **OK**. A Sending to Clients status window shows the progress.

## Computers window



1:

Location property wizard

© 2011 IBM Corporation

## Computers window.

A new column, Location By Subnet, is now on the Computers window. The column is already selected and turned on.

## Location By Subnet column

The screenshot displays the IBM BigFix Enterprise Console interface. A table of computers is shown with columns for 'App. Info.', 'IP Address', and 'Location By Sub.'. The 'Location By Sub.' column is highlighted with a red circle, and its value for the selected computer is 'Home Office'. Below the table, the 'Computer Properties' window is open, showing details for the selected computer, including the OS (Windows 7) and CPU (Intel Core i7).

App. Info.	IP Address	Location By Sub.
Application Info: 2	192.168.1.114	Home Office
Application Info: 1	192.168.37.130	
Application Info: 1	192.168.37.133	
Application Info: 1	192.168.37.135	
Application Info: 1	192.168.1.111	
Application Info: 1	192.168.37.129	

Computer Properties  
 Core Properties  
 Active Directory Path: <empty>  
 OS: Win2008R2 6.1.7600  
 CPU: 1600 MHz Intel(R) Core(TM) i7 CPU Q 720 @ 1.60GHz

15

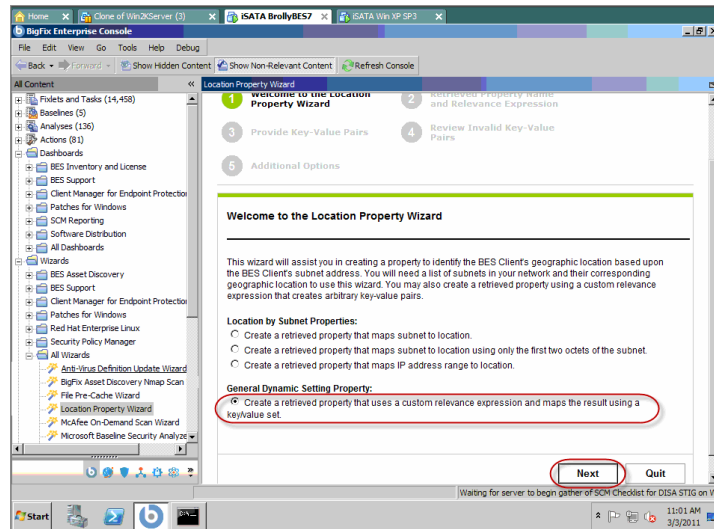
Location property wizard

© 2011 IBM Corporation

## Location By Subnet column.

The Location By Subnet column populates with answers, including the home office. You know that the machine on this subnet is in the home office. This information is valuable because you can aggregate from several different subnets. Note: The Location By Subnet property is dynamic and automatically updates if the subnet changes to another subnet.

## Global Tivoli Endpoint Manager parameter example



12

Location property wizard

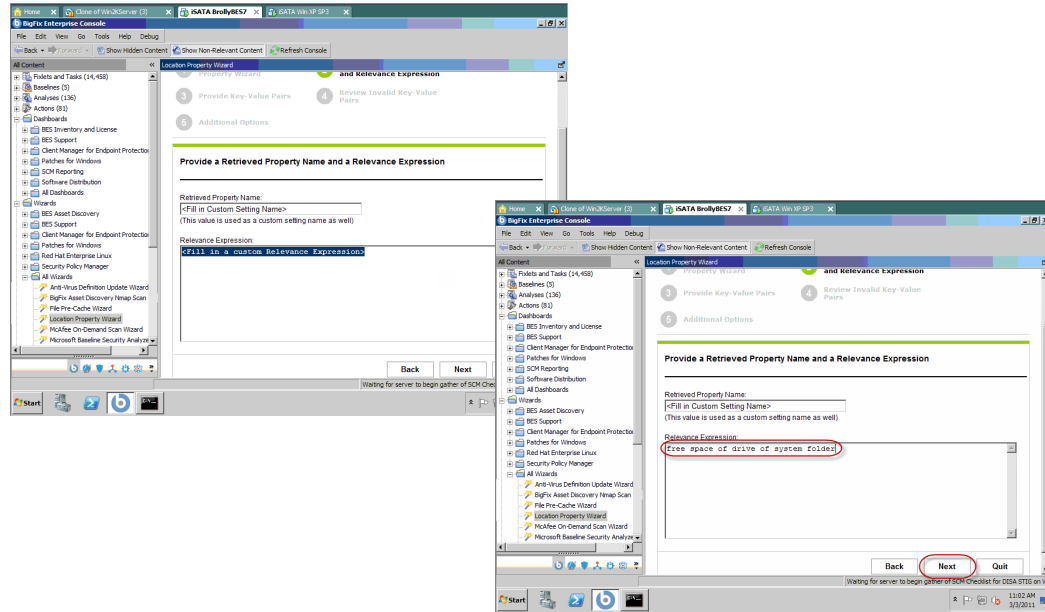
© 2011 IBM Corporation

### Global Tivoli Endpoint Manager parameter example.

The wizard works as a network to the subnet, but you can use other properties for global mapping. You can create a dynamic retrieve property that maps one result to another result. Select **Create a retrieved property that uses a custom relevance expression and maps the result using a key/value set.** Click **Next**.



## Global parameter example continued: Relevance expression



17

Location property wizard

© 2011 IBM Corporation

### Global parameter example continued: Relevance expression.

You can enter the result to which you are mapping. Enter the Relevance Expression **free space of drive of system folder**. Click **Next**.

## Global parameter example continued: Key-value pairs

12 Location property wizard © 2011 IBM Corporation

## Global parameter example continued: Key-value pairs.

You can enter a key value pair. Enter the Key-Value Pair **1000000 good**. Note: Do not forget to use a tab delimiter. You mapped a value to a word. Click **Next**. Click **Finish** on the Additional Options page.

## Summary

Now that you have completed this module, you can perform these tasks:

- Describe the location property wizard
- Start the location property wizard
- Describe retrieved property names, relevance expressions, and key value pairs
- Add a subnet
- Describe key value pair errors and the location property wizard additional options
- Describe how to use the location property wizard to create a global parameter

### **Summary.**

Now that you have completed this module, you can describe the location property wizard, and how to start it. You can describe retrieved property names, relevance expressions, and key value pairs. You can add a subnet. You can describe key value pair errors, the location property wizard additional options, and how to use the location property wizard to create a global parameter.

## Feedback

Your feedback is valuable

You can help improve the quality of IBM Education Assistant content to better meet your needs by providing feedback.

- Did you find this module useful?
- Did it help you solve a problem or answer a question?
- Do you have suggestions for improvements?

Click to send email feedback:

[mailto:iea@us.ibm.com?subject=Feedback\\_about\\_loc\\_prop\\_wiz.ppt](mailto:iea@us.ibm.com?subject=Feedback_about_loc_prop_wiz.ppt)

This module is also available in PDF format at: [../loc\\_prop\\_wiz.pdf](..loc_prop_wiz.pdf)

You can help improve the quality of IBM Education Assistant content by providing feedback.



## Trademarks, disclaimer, and copyright information

IBM, the IBM logo, ibm.com, and Tivoli are trademarks or registered trademarks of International Business Machines Corp., registered in many jurisdictions worldwide. Other product and service names might be trademarks of IBM or other companies. A current list of other IBM trademarks is available on the web at "[Copyright and trademark information](http://www.ibm.com/legal/copytrade.shtml)" at <http://www.ibm.com/legal/copytrade.shtml>

THE INFORMATION CONTAINED IN THIS PRESENTATION IS PROVIDED FOR INFORMATIONAL PURPOSES ONLY. WHILE EFFORTS WERE MADE TO VERIFY THE COMPLETENESS AND ACCURACY OF THE INFORMATION CONTAINED IN THIS PRESENTATION, IT IS PROVIDED "AS IS" WITHOUT WARRANTY OF ANY KIND, EXPRESS OR IMPLIED. IN ADDITION, THIS INFORMATION IS BASED ON IBM'S CURRENT PRODUCT PLANS AND STRATEGY, WHICH ARE SUBJECT TO CHANGE BY IBM WITHOUT NOTICE. IBM SHALL NOT BE RESPONSIBLE FOR ANY DAMAGES ARISING OUT OF THE USE OF, OR OTHERWISE RELATED TO, THIS PRESENTATION OR ANY OTHER DOCUMENTATION. NOTHING CONTAINED IN THIS PRESENTATION IS INTENDED TO, NOR SHALL HAVE THE EFFECT OF, CREATING ANY WARRANTIES OR REPRESENTATIONS FROM IBM (OR ITS SUPPLIERS OR LICENSORS), OR ALTERING THE TERMS AND CONDITIONS OF ANY AGREEMENT OR LICENSE GOVERNING THE USE OF IBM PRODUCTS OR SOFTWARE.

© Copyright International Business Machines Corporation 2011. All rights reserved.