



IBM Tivoli OMEGAMON XE for IMS on z/OS V410

*Response Time Analysis data missing from
Tivoli Enterprise Portal workspace*

Tivoli. software



© 2009 IBM Corporation
Updated June 9, 2015

This presentation describes a problem with Version 410 of OMEGAMON® XE for IMS™ in which the two product-provided workspaces dealing with Response Time Analysis (RTA) data were blank. It also provides a quick workaround for the issue.

RTA data missing from Tivoli Enterprise Portal workspace

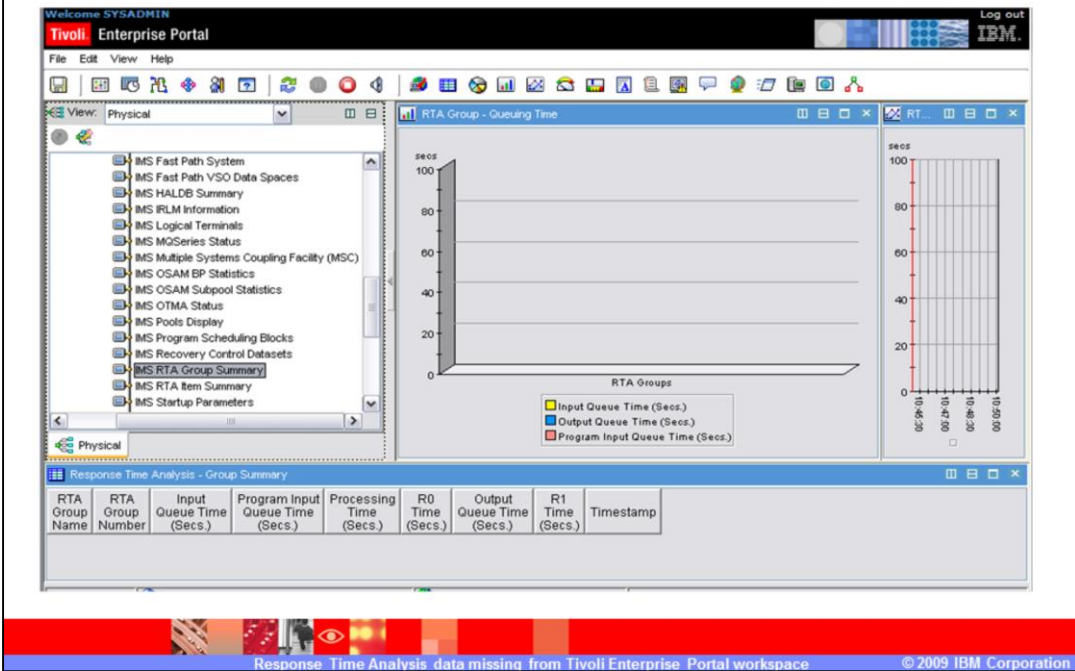
- Customers reported empty RTA workspaces in Version 410
- Additional product customization was necessary to port Response Time Analysis data
- Resolved in Version 420 by expanding the capability of the workspaces involved

RTA data missing from Tivoli Enterprise Portal workspace.

After Version 410 of OMEGAMON XE for IMS on z/OS® was released in late 2007, it was discovered that the two new RTA workspaces had no data in some customer environments. Some research showed that the data necessary to populate these workspaces was only available if some default product settings were customized in the Global member. This customization is described in more detail in the User's Guide.

Because work was already underway for Version 420, the new release was updated with sufficient logic to use the existing data. However, Version 410 still required customers to do a bit of work.

Example of empty RTA workspace



Example of empty RTA workspace.

As you can see in this example of an RTA workspace, data is missing from all views.

How RTA data is collected

- OM/IMS Classic started task acts as the collector
- Agent started task automatically detects the existence of Classic started task and seeks input



How RTA data is collected.

As the XE interface to the product has matured, more data collection activity has been reproduced within the Agent started task. For customers who still prefer the 3270-based interface known as Classic or CUA, the Classic started task continues to function as the data collector. Currently, one of the very few collection functions that has not been copied to the Agent started task is for RTA data. That functionality still remains solely in the Classic task. Therefore, to collect RTA data and present it within Tivoli Enterprise Portal, the IMS system being monitored must have a Classic started task running with RTA data collection enabled. The Agent started task periodically scans the system for Classic data that might be available for a configured IMS system. It then adds that data to what has already been provided to the portal client.

Customization of Global member required

- Default Global member in RKANSAMU(KOIGBLxx) only defines CLASS based groups
- Version 410 RTA workspace logic requires PSB or TRAN based groups
- Global member does not allow TRAN=* or PSB=*
- Solution: define multiple groups such as
\$OIGROUP ID,TRAN=A*,GROUPS=10
\$OIGROUP ID,TRAN=B*,GROUPS=10
\$OIGROUP ID,TRAN=C*,GROUPS=10

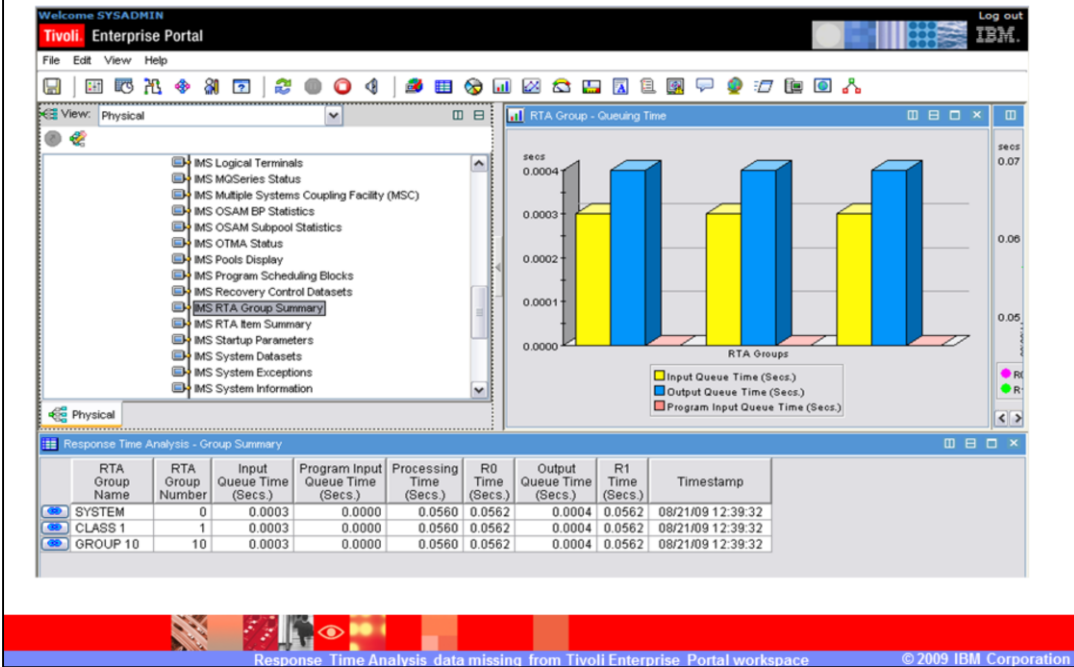
Customization of Global member required.

OMEGAMON for IMS has always split up response time analysis data into user-defined groups. These groups can be defined in a number of ways, including IMS transaction name, PSB name, or IMS Class. By default, this Global member defines Group 1 as all IMS Class 1 transactions, Group 2 as IMS Class 2 transactions, and so on. All of the default groups are based on the IMS Class with which a transaction is defined.

Version 410 of the XE interface requires RTA data that has been collected by a Transaction or PSB defined group. Therefore, some Global member customization is required. Instructions for this customization are included in the User's Guide, but be aware that you must add some Groups that are defined with either the TRAN or PSB keywords instead of the default CLASS based examples. Currently a completely generic group like TRAN=* or PSB=* is not recognized, but you can create groups such as TRAN=A* and TRAN=B* as an alternative. Create all 26 letters of the alphabet to cover all of the IMS transaction name prefixes possible.

After updating the Global member, you must assemble and link it into your RKANMODU load library using JCL found in RKANSAMU. You must then recycle your Classic started task.

Example of RTA workspace with correct Global



Example of RTA workspace with correct Global.

Shortly after the Global member is assembled and linked into place, your RTA workspaces should begin to reflect the newly available data.

Notes

- Classic started task collects RTA data only on IMS write to OLDS, so low-throughput systems might take a while to populate a workspace
- Technote 1396840 describes new RTA workspaces
- Technote 1389976 describes necessary updates to Global for V410
- V420 workspaces updated to use even CLASS based groups as input

Notes.

Because OMEGAMON for IMS cannot see the IMS input data until the log data is written (called an OLDS write), you might have to wait a while until IMS writes that data. On low-use systems you can force such a write by using the IMS /CHE command to cause an IMS checkpoint to be written. To prevent any unexpected consequences, always confer with your IMS systems programmer before attempting to issue any IMS commands.

Two Technotes provide additional information about this issue: Technote 1396840 describes the new RTA workspaces and Technote 1389976 describes how to update your Version 410 Global member appropriately. Note that the logic in the Version 420 workspaces has been updated to use even the default CLASS based groups to provide the RTA workspaces with the data they need.

Trademarks, copyrights, and disclaimers

IBM, the IBM logo, ibm.com, and the following terms are trademarks or registered trademarks of International Business Machines Corporation in the United States, other countries, or both:

IBM IMS OMEGAMON Tivoli z/OS

If these and other IBM trademarked terms are marked on their first occurrence in this information with a trademark symbol (® or ™), these symbols indicate U.S. registered or common law trademarks owned by IBM at the time this information was published. Such trademarks may also be registered or common law trademarks in other countries. A current list of other IBM trademarks is available on the Web at "Copyright and trademark information" at <http://www.ibm.com/legal/copytrade.shtml>

Other company, product, or service names may be trademarks or service marks of others.

Product data has been reviewed for accuracy as of the date of initial publication. Product data is subject to change without notice. This document could include technical inaccuracies or typographical errors. IBM may make improvements or changes in the products or programs described herein at any time without notice. Any statements regarding IBM's future direction and intent are subject to change or withdrawal without notice, and represent goals and objectives only. References in this document to IBM products, programs, or services does not imply that IBM intends to make such products, programs or services available in all countries in which IBM operates or does business. Any reference to an IBM Program Product in this document is not intended to state or imply that only that program product may be used. Any functionally equivalent program, that does not infringe IBM's intellectual property rights, may be used instead.

THE INFORMATION PROVIDED IN THIS DOCUMENT IS DISTRIBUTED "AS IS" WITHOUT ANY WARRANTY, EITHER EXPRESS OR IMPLIED. IBM EXPRESSLY DISCLAIMS ANY WARRANTIES OF MERCHANTABILITY, FITNESS FOR A PARTICULAR PURPOSE OR NON-INFRINGEMENT. IBM shall have no responsibility to update this information. IBM products are warranted, if at all, according to the terms and conditions of the agreements (for example, IBM Customer Agreement, Statement of Limited Warranty, International Program License Agreement, etc.) under which they are provided. Information concerning non-IBM products was obtained from the suppliers of those products, their published announcements or other publicly available sources. IBM has not tested those products in connection with this publication and cannot confirm the accuracy of performance, compatibility or any other claims related to non-IBM products.

IBM makes no representations or warranties, express or implied, regarding non-IBM products and services.

The provision of the information contained herein is not intended to, and does not, grant any right or license under any IBM patents or copyrights. Inquiries regarding patent or copyright licenses should be made, in writing, to:

IBM Director of Licensing
IBM Corporation
North Castle Drive
Armonk, NY 10504-1785
U.S.A.

Performance is based on measurements and projections using standard IBM benchmarks in a controlled environment. All customer examples described are presented as illustrations of how those customers have used IBM products and the results they may have achieved. The actual throughput or performance that any user will experience will vary depending upon considerations such as the amount of multiprogramming in the user's job stream, the I/O configuration, the storage configuration, and the workload processed. Therefore, no assurance can be given that an individual user will achieve throughput or performance improvements equivalent to the ratios stated here.

© Copyright International Business Machines Corporation 2009. All rights reserved.

Note to U.S. Government Users - Documentation related to restricted rights-Use, duplication or disclosure is subject to restrictions set forth in GSA ADP Schedule Contract and IBM Corp.

