

Optim Development Studio

Creating an Optim Directory Project in Optim Designer



© 2012 IBM Corporation

This presentation is “How to create an Optim™ Directory Project in Optim Designer”. This topic is important because it will enable you to view requests stored in the Optim Directory and allow you to transform them into Optim Services.

Objective

- Scope
 - Creating an Optim Directory Project

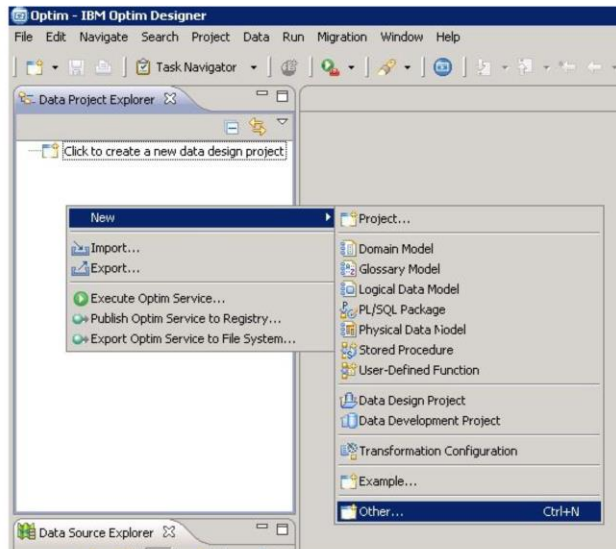
- What is covered
 - Creating connection profile
 - Creating Optim Directory Project

- What is **not** covered
 - Transforming Request into an Optim Service

After viewing this presentation, you will be able to add an Optim Directory Project to your Optim Designer workspace. This presentation covers the steps to create a connection profile for the Optim Directory and to create the Optim Directory Project. This presentation does not cover the steps for transforming a request into an Optim Service.

Steps (1 of 8)

1. Right-click in Data Project Explorer, navigate to New>Other...



3

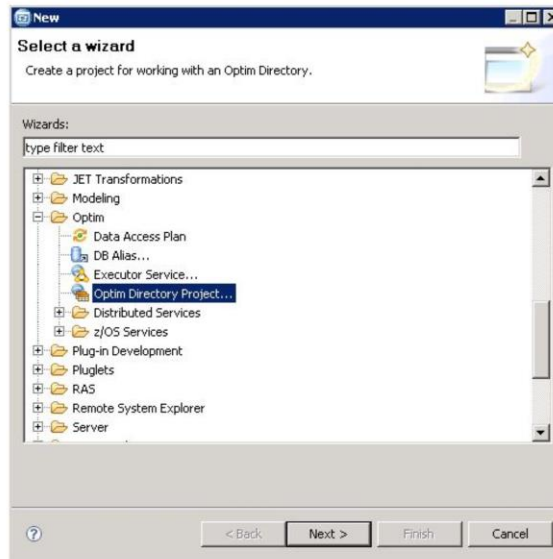
Creating an Optim Directory Project in Optim Designer

© 2012 IBM Corporation

In the Data Project Explorer at the top-left of the screen, right-click in the white area and navigate to New, Other.

Steps (2 of 8)

2. Expand Optim folder, select 'Optim Directory Project...' click Next



4

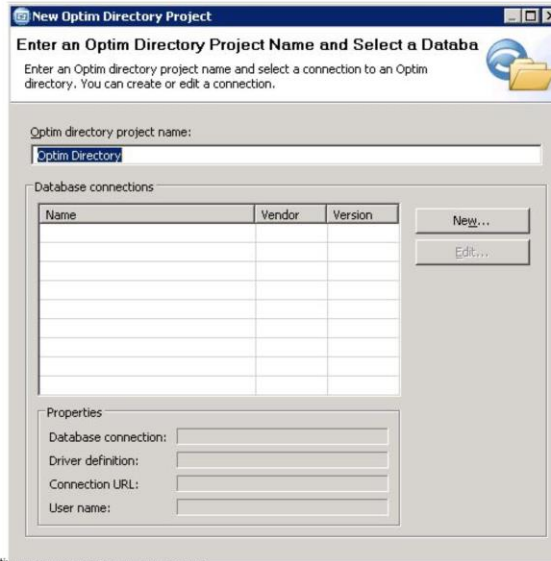
Creating an Optim Directory Project in Optim Designer

© 2012 IBM Corporation

In the Select a Wizard dialog box, scroll down and expand the Optim directory. Then, select 'Optim Directory Project' and click Next.

Steps (3 of 8)

3. Enter Optim directory project name
4. Click New to create new JDBC connection profile



5

Creating an Optim Directory Project in Optim Designer

© 2012 IBM Corporation

In the text field at the top, enter a name for the Optim directory project. In the Database connections section, select New to create a new JDBC connection profile.

Steps (4 of 8)

5. Select Connection Profile Type from list
6. Enter name and (optionally) description



6

Creating an Optim Direct

© 2012 IBM Corporation

From the Connection Profile Types group, select the database type that corresponds to your Optim Directory. Enter a name for the new connection profile. You can also enter a description, however it is not required.

Steps (5 of 8)

7. Enter information to connect to database, click Finish

New Connection Profile
Specify a Driver and Connection Details
Select a driver from the drop-down and provide login details for the connection.

Drivers: IBM Data Server Driver for JDBC and SQLJ (JDBC 4.0) Default

Properties
General | Tracing | Optional

Database: OPTDIR
Host: localhost
Port number: 50000
 Use client authentication
User name: optimus
Password: *****
 Save password
Default schema:
Connection URL: jdbc:db2://localhost:50000/OPTDIR:retrieveMessagesFromServerOnGetMessage=true

Connect when the wizard completes
 Connect every time the workbench is started

7

Creating an Optim Directory Project in Optim Designer

© 2012 IBM Corporation

Fill in the necessary information to allow you to connect to the database. You can test the connection by clicking the 'Test Connection' button at the bottom of the window. When you are done entering the information, click Finish.

Steps (6 of 8)

8. Click Next in New Optim Directory Project wizard screen

Optim directory project name:
Optim Directory

Name	Vendor	Version
Local Optim Directory	DB2 LDB	V9.7

Properties

Database connection: Local Optim Directory
Driver definition: com.ibm.db2.jcc.DB2Driver
Connection URL: jdbc:db2://localhost:50000/OPTDIR:rel
User name: optimus

8

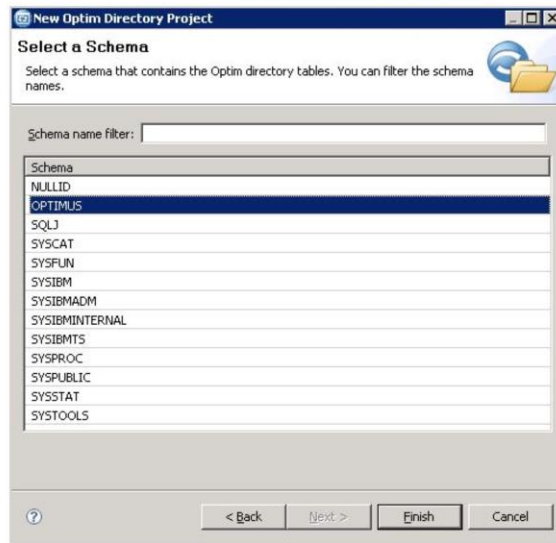
Creating an Optim Directory Project in Optim Designer

© 2012 IBM Corporation

When you finished creating the connection profile, it appears in the Database connections group. Information about the newly created connection profile can be found under Properties. Click Next to continue with creating the Optim Directory Project.

Steps (7 of 8)

9. Select schema that contains Optim Directory tables



9

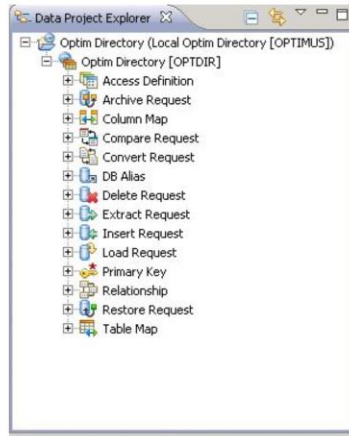
Creating an Optim Directory Project in Optim Designer

© 2012 IBM Corporation

Select the schema that contains the Optim Directory tables and packages, then click Finish.

Steps (8 of 8)

Optim Directory Project has been created in workspace



The Optim Directory Project has been created in the workspace. You will now be able to browse the requests stored in your Optim Directory.

Additional resources

- InfoSphere® Optim Solutions Information Center
 - <http://publib.boulder.ibm.com/infocenter/optsol/v1/index.jsp>

This slide displays a link to additional resources.

Trademarks, disclaimer, and copyright information

IBM, the IBM logo, ibm.com, InfoSphere, and Optim are trademarks or registered trademarks of International Business Machines Corp., registered in many jurisdictions worldwide. Other product and service names might be trademarks of IBM or other companies. A current list of other IBM trademarks is available on the web at "[Copyright and trademark information](http://www.ibm.com/legal/copytrade.shtml)" at <http://www.ibm.com/legal/copytrade.shtml>

THE INFORMATION CONTAINED IN THIS PRESENTATION IS PROVIDED FOR INFORMATIONAL PURPOSES ONLY. WHILE EFFORTS WERE MADE TO VERIFY THE COMPLETENESS AND ACCURACY OF THE INFORMATION CONTAINED IN THIS PRESENTATION, IT IS PROVIDED "AS IS" WITHOUT WARRANTY OF ANY KIND, EXPRESS OR IMPLIED. IN ADDITION, THIS INFORMATION IS BASED ON IBM'S CURRENT PRODUCT PLANS AND STRATEGY, WHICH ARE SUBJECT TO CHANGE BY IBM WITHOUT NOTICE. IBM SHALL NOT BE RESPONSIBLE FOR ANY DAMAGES ARISING OUT OF THE USE OF, OR OTHERWISE RELATED TO, THIS PRESENTATION OR ANY OTHER DOCUMENTATION. NOTHING CONTAINED IN THIS PRESENTATION IS INTENDED TO, NOR SHALL HAVE THE EFFECT OF, CREATING ANY WARRANTIES OR REPRESENTATIONS FROM IBM (OR ITS SUPPLIERS OR LICENSORS), OR ALTERING THE TERMS AND CONDITIONS OF ANY AGREEMENT OR LICENSE GOVERNING THE USE OF IBM PRODUCTS OR SOFTWARE.

© Copyright International Business Machines Corporation 2012. All rights reserved.