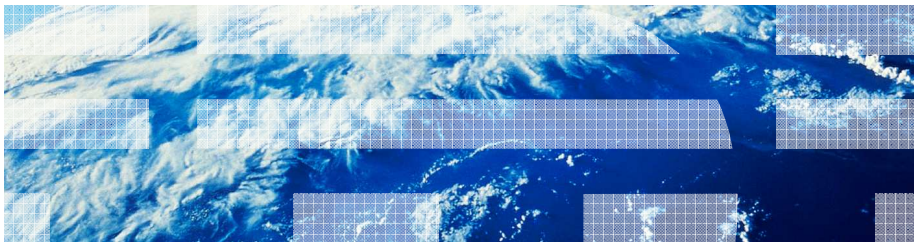




IBM Tivoli Netcool Performance Manager 1.3 Wireline Component

Installing the DataView Page Design Toolkit



© 2011 IBM Corporation

In this training module, you learn how to install the DataView Page Design Toolkit.

Style sheet overview

Style sheets contain:

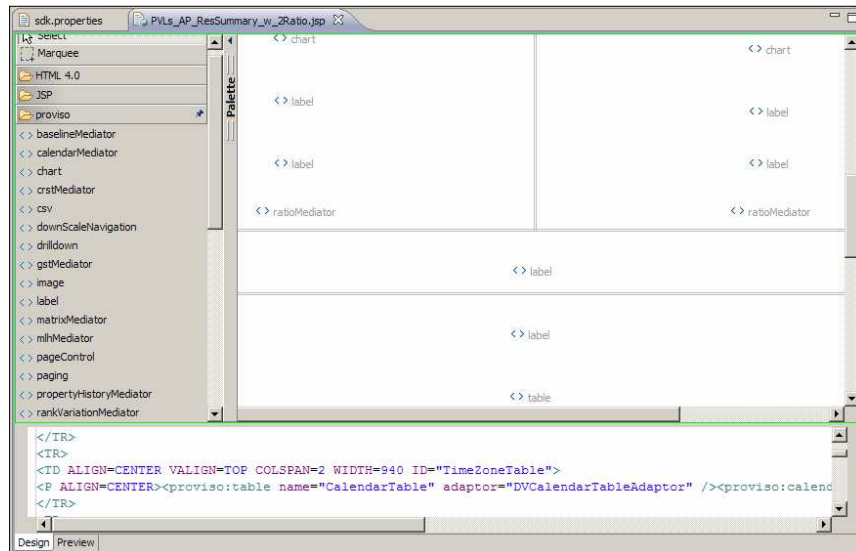
- Mediators
- Display objects
- Text labels
- Images
- Page controls

You can use the DataView Page Design Tool Kit utility to configure the way that the HTML-level style sheet pages are displayed. Using style sheets, you can customize the framework of pages that have reports. This customization includes visual objects, such as spacing between reports, text location, and page control location. A style sheet template includes these objects.

- **Mediator:** A mediator is a query that retrieves data from a data source and forwards it to a display object (such as a chart or a table). The mediator must have a destination, such as a display object or a text label.
- **Display objects:** Display objects, such as charts and tables, visually represent data that is received from the mediator. Tables require table adapters for formatting.
- **Text labels:** Text labels have context information about the charts and tables, and any other textual information that is required for a report.
- **Images:** The image that is specified in the reporter parameter is displayed on the report when you view the report in a browser.
- **Page controls:** Page controls are displayed under tables. They provide links to other pages of the table when the table is too long to be displayed on one page.

Mediators, display objects, text labels, images, and page controls in the style sheet become configurable controls in a reporter.

DataView Page Design Toolkit



The DataView Page Design Toolkit is an object-oriented visual development utility. You use it to modify existing style sheets or to create new ones.

You do not need to install the DataView Page Design Toolkit software on the same host as the DataView server. However, you must have connectivity to the server while you upload and download content.



Installation and configuration overview

These tasks are required to install and configure the DataView Page Design Toolkit:

- Install Java JDK version 1.5 (non-IBM software)
- Install Eclipse Java EE IDE for web developers (non-IBM software)
- Import the DataView Page Design Toolkit project to Eclipse Java EE
- Configure the toolkit to connect to a DataView server
- Register the DataView JSP template
- Set up the ant scripts

You must complete these tasks before you can use the DataView Page Design Toolkit.



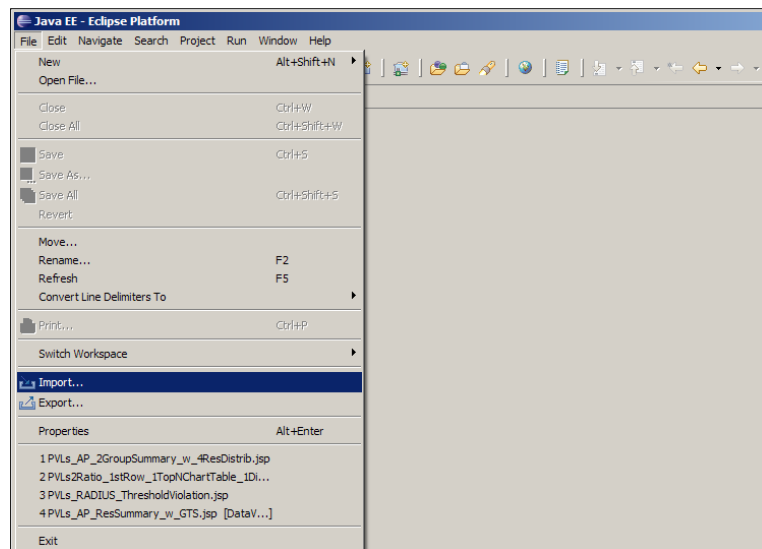
Installing the prerequisite software

To install Java JDK version 1.5, extract the installation file and run the installation wizard

To install Eclipse Java EE IDE for web developers, extract the Eclipse Java EE package

Java JDK version 1.5 and Eclipse Java EE IDE are not published or provided by IBM. Visit <http://www.eclipse.org/downloads/moreinfo/jee.php> to download this software.

Importing the DataView Page Design Toolkit project

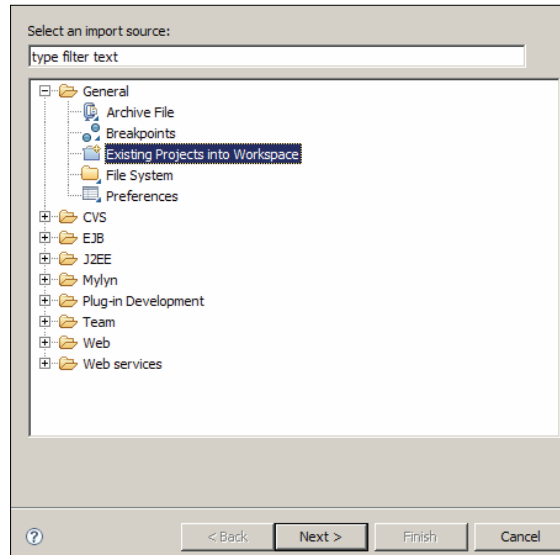


IBM Tivoli Netcool Performance Manager 1.3 Wireline Component: Installing the DataView Page Design Toolkit

© 2011 IBM Corporation

To import the toolkit, locate and extract the DataView Page Design Toolkit package. The package file name is `tnpm1.3.0.0_pageDesignToolkit.tar`. Start the Eclipse Java EE IDE application. Click **File > Import** to import the DataView Page Design Toolkit project to the workspace. The Import wizard starts.

Import source

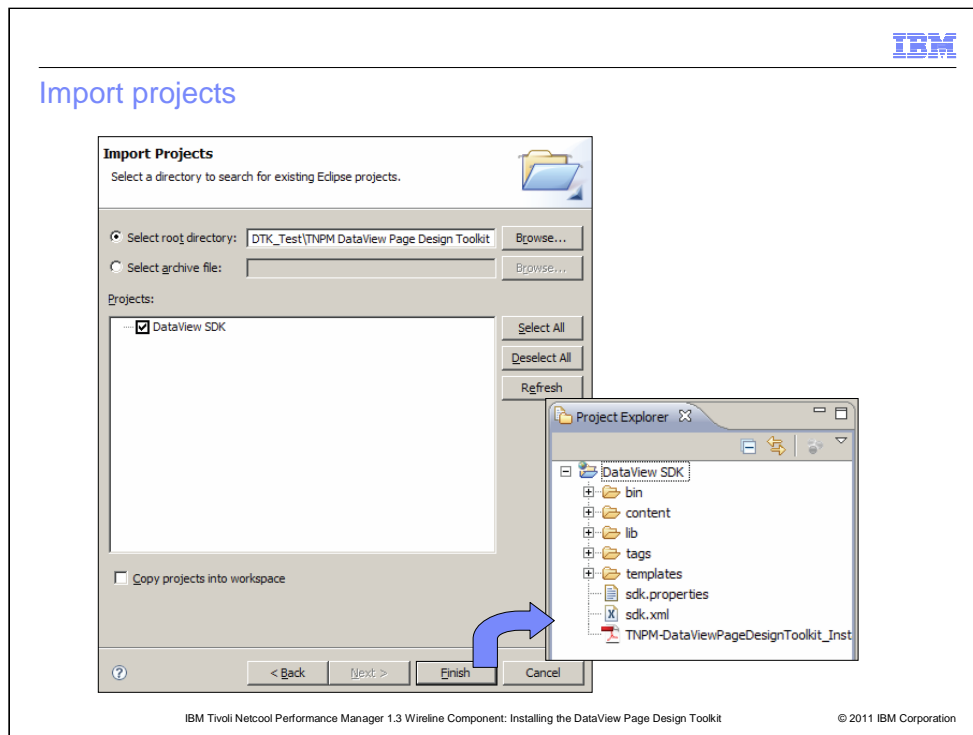


IBM Tivoli Netcool Performance Manager 1.3 Wireline Component: Installing the DataView Page Design Toolkit

© 2011 IBM Corporation

In the Import wizard, click **General > Existing Projects into Workspace** and click **Next**.

Import projects



In the **Select root directory** field, enter or browse to the top-level directory where the DataView Page Design Toolkit was extracted. Make sure that **DataView SDK** is selected in the **Projects** list and click **Finish**. The DataView Page Design Toolkit is available in the Project Explorer view.

Configuring the toolkit to connect to a DataView server

```

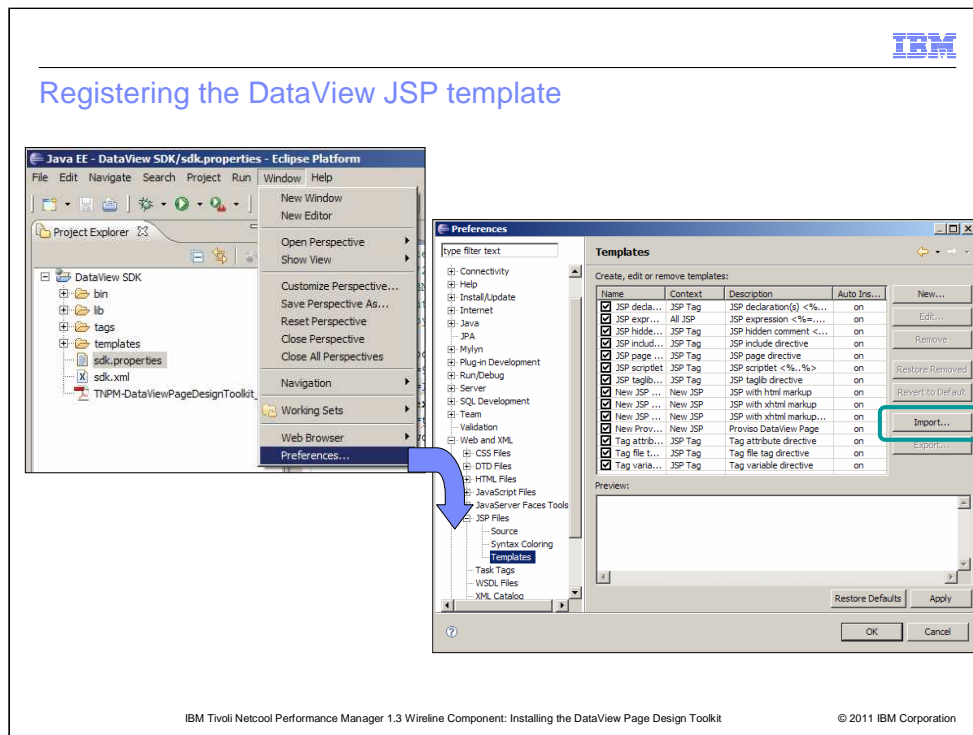
# Licensed Materials - Property of IBM
# 5724-W86, 5724-X63
# Copyright IBM Corporation 2009. All Rights Reserved.
# US Government Users Restricted Rights- Use, duplication or disclosure
# restricted by GSA ADP Schedule Contract with IBM Corp.

dataview.protocol=http
dataview.host=student78
dataview.port=16315
dataview.context=PV
dataview.user=ripadmin
dataview.password=ripadmin
  
```

Parameter	Value
dataview.protocol	The connection protocol to DataView. This value is either http or https.
dataview.host	The IP address or host name of the DataView server.
dataview.port	The application port for the connection. Use 16315 for http connection or 16316 for https connection.
dataview.context	The name of the database instance. PV is the default value.
dataview.user	The user name of an administrative user.
dataview.password	The password of an administrative user.

Edit the **sdk.properties** file to configure a connection to a DataView server. The parameters in the **sdk.properties** file are listed in the table. In the Project Explorer view, double-click the **sdk.properties** file. After you edit the file, click the **Save** button to save the changes.

Registering the DataView JSP template

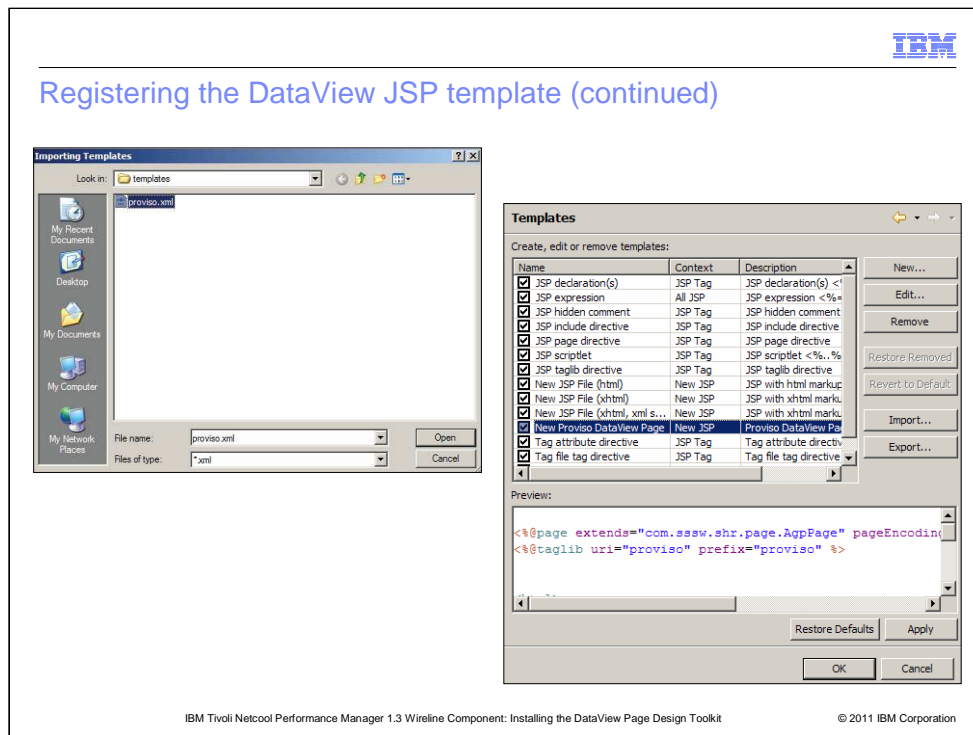


IBM Tivoli Netcool Performance Manager 1.3 Wireline Component: Installing the DataView Page Design Toolkit

© 2011 IBM Corporation

A JSP template, named proviso.xml, must be registered with Eclipse Java EE IDE. This template is included with the toolkit and is used to create all style sheets. To register the template, click **Window > Preferences**. In the Preferences window, expand web and XML > JSP Files > Templates. Click **Import**.

Registering the DataView JSP template (continued)

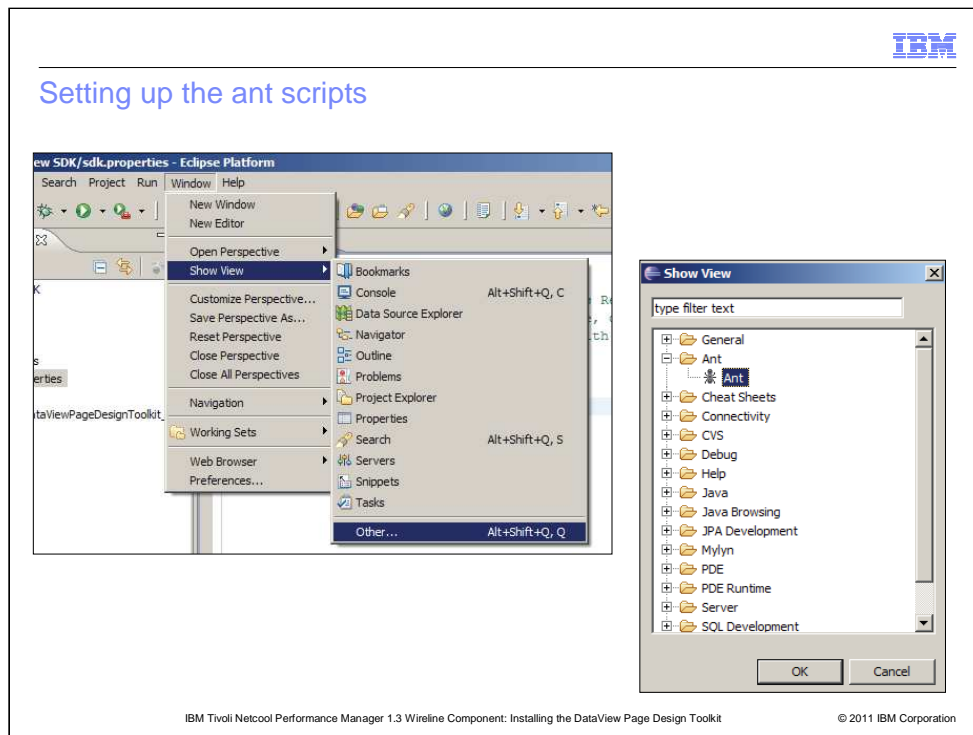


IBM Tivoli Netcool Performance Manager 1.3 Wireline Component: Installing the DataView Page Design Toolkit

© 2011 IBM Corporation

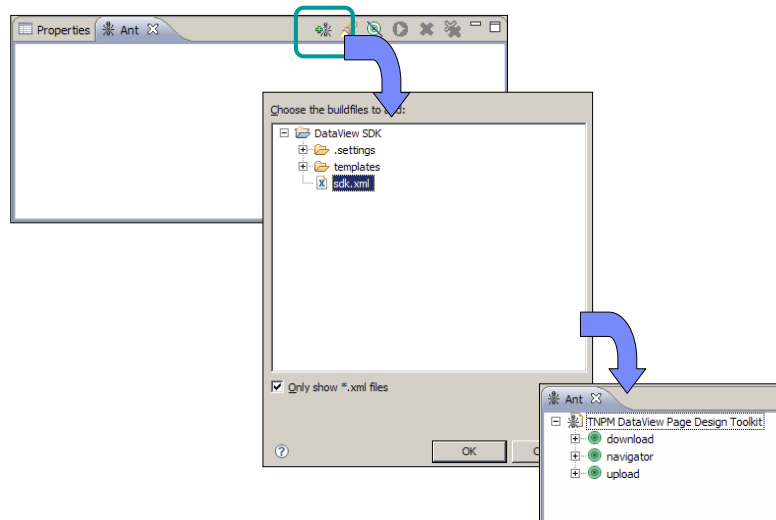
Click the **proviso.xml** template. Click **Open**. Verify that the New Proviso DataView Page template is available in the Templates window. Click **Apply**, then click **OK**.

Setting up the ant scripts



An ant script is a build file written in XML format. The ant script build file that is included with the toolkit is named **sdk.xml**. You use it to upload content, download content, and run DataView Navigator. To set up the ant scripts in the **sdk.xml** file, click **Window > Show View > Other**. Expand **Ant** in the Show View window. Click the **Ant** icon and click **OK**. An **Ant** tab is now available.

Setting up the ant scripts (continued)



To complete setting up the ant scripts, click the **Ant** tab, and click the **Add Buildfiles** button. Click the **sdk.xml** file in the DataView SDK directory. Click **OK**. The download, navigator, and upload scripts are now available on the Ant tab.



DataView Page Design Toolkit installation summary

To install and configure the DataView Page Design Toolkit, you perform these steps:

- Install prerequisite software
- Import the DataView Page Design Toolkit project to Eclipse Java EE
- Configure the toolkit to connect to a DataView server
- Register the DataView JSP template
- Set up the ant scripts

In this training module, you learned the steps to install and configure the DataView Page Design Toolkit.



Feedback

Your feedback is valuable

You can help improve the quality of IBM Education Assistant content to better meet your needs by providing feedback.

- Did you find this module useful?
- Did it help you solve a problem or answer a question?
- Do you have suggestions for improvements?

Click to send email feedback:

mailto:iea@us.ibm.com?subject=Feedback_about_dpdtk.ppt

This module is also available in PDF format at: [../dpdtk.pdf](#)

You can help improve the quality of IBM Education Assistant content by providing feedback.



Trademarks, disclaimer, and copyright information

IBM, the IBM logo, ibm.com, Netcool, Proviso, and Tivoli are trademarks or registered trademarks of International Business Machines Corp., registered in many jurisdictions worldwide. Other product and service names might be trademarks of IBM or other companies. A current list of other IBM trademarks is available on the web at "[Copyright and trademark information](http://www.ibm.com/legal/copytrade.shtml)" at <http://www.ibm.com/legal/copytrade.shtml>

Java, and all Java-based trademarks and logos are trademarks of Oracle and/or its affiliates.

Other company, product, or service names may be trademarks or service marks of others.

THE INFORMATION CONTAINED IN THIS PRESENTATION IS PROVIDED FOR INFORMATIONAL PURPOSES ONLY. WHILE EFFORTS WERE MADE TO VERIFY THE COMPLETENESS AND ACCURACY OF THE INFORMATION CONTAINED IN THIS PRESENTATION, IT IS PROVIDED "AS IS" WITHOUT WARRANTY OF ANY KIND, EXPRESS OR IMPLIED. IN ADDITION, THIS INFORMATION IS BASED ON IBM'S CURRENT PRODUCT PLANS AND STRATEGY, WHICH ARE SUBJECT TO CHANGE BY IBM WITHOUT NOTICE. IBM SHALL NOT BE RESPONSIBLE FOR ANY DAMAGES ARISING OUT OF THE USE OF, OR OTHERWISE RELATED TO, THIS PRESENTATION OR ANY OTHER DOCUMENTATION. NOTHING CONTAINED IN THIS PRESENTATION IS INTENDED TO, NOR SHALL HAVE THE EFFECT OF, CREATING ANY WARRANTIES OR REPRESENTATIONS FROM IBM (OR ITS SUPPLIERS OR LICENSORS), OR ALTERING THE TERMS AND CONDITIONS OF ANY AGREEMENT OR LICENSE GOVERNING THE USE OF IBM PRODUCTS OR SOFTWARE.

© Copyright International Business Machines Corporation 2011. All rights reserved.