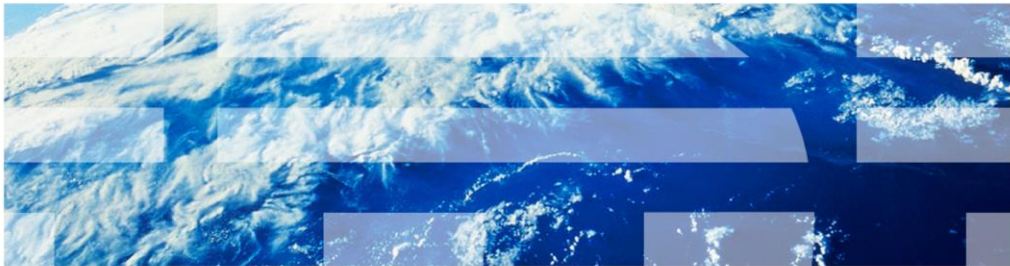


IBM Tivoli Netcool/OMNIbus version 7.3.1

Installing ITM Agent for Netcool/OMNIbus on Linux servers



© 2013 IBM Corporation

In this training module, you learn the installation procedure for IBM Tivoli® Monitoring Agent for Netcool®/OMNIbus 7.3.1 on Linux® servers.

Prerequisites

- A successfully installed and started Tivoli Netcool/OMNIBus Tivoli Netcool/OMNIBus version 7.3.1 ObjectServer
- The agent must be able to connect to a successfully installed and started IBM Tivoli Monitoring 6.2 server
- These support packages must be installed:
 - ITM for Tivoli Netcool/OMNIBus Agent
 - ITM for Tivoli Netcool/OMNIBus Agent for TEMS support
 - ITM for Tivoli Netcool/OMNIBus Agent for TEPS support
 - ITM for Tivoli Netcool/OMNIBus Agent for TEP Desktop Client support
 - ITM for Tivoli Netcool/OMNIBus Agent for TEP Browser Client support

After installation of the IBM Tivoli Monitoring Agent for Netcool/OMNIBus 7.3.1 on Linux servers, make sure that you have access to the ObjectServer that you want to monitor. The agent must also be able to connect to an IBM Tivoli Monitoring 6.2 server. Before installing the agent, make sure you first have met the prerequisites and software package installation requirements shown on this slide.

Objectives

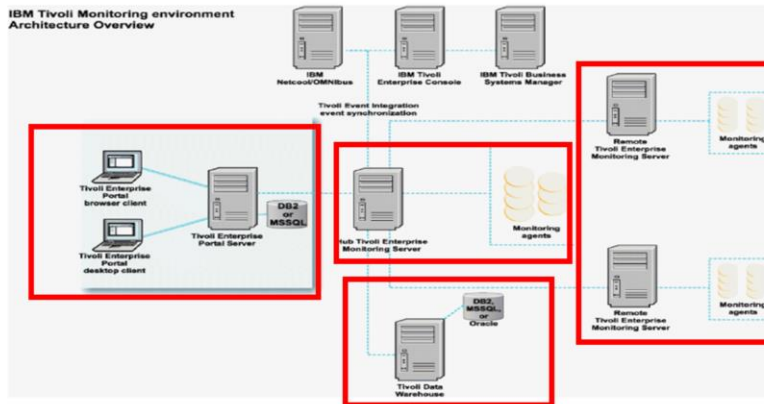
- When you complete this training module, you can accomplish these tasks:
- Describe at a high level the functionality of IBM Tivoli Monitoring
- Describe at a high level the functionality of the Tivoli Monitoring Agent for IBM Tivoli Netcool/OMNibus 7.3.1
- Successfully accomplish an installation of the Tivoli Monitoring Agent for IBM Tivoli Netcool/OMNibus 7.3.1 on a Linux server

After you have completed this training module, you can perform these tasks:

- Describe at a high level the functionality of IBM Tivoli Monitoring
- Describe at a high level the functionality of the ITM Agent for IBM Tivoli Netcool/OMNibus 7.3.1
- Successfully perform an installation of the ITM Agent for IBM Tivoli Netcool/OMNibus 7.3.1 on a Linux server

IBM Tivoli Monitoring with IBM Tivoli Netcool/OMNIBus 7.3.1

Components of IBM Tivoli Monitoring



© 2013 IBM Corporation

IBM Tivoli Monitoring is the base or prerequisite software application for ITM Agent for Netcool/OMNIBus which is one of the monitoring agents.

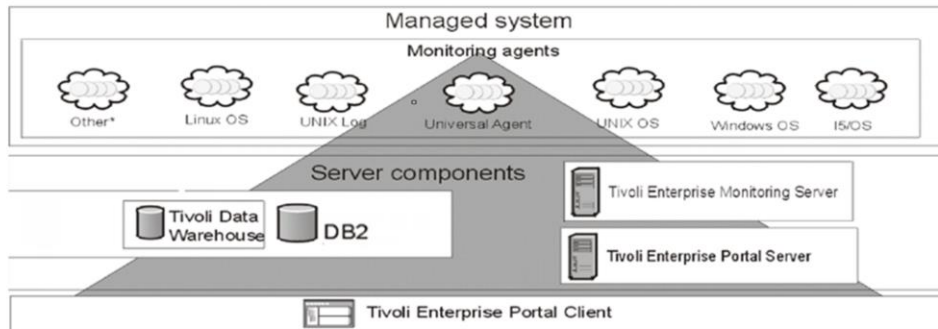
The elements in the red boxes are part of IBM Tivoli Monitoring. The main components are the Tivoli Enterprise Portal (TEP) clients, TEP Server, both hub (monitoring server) and remote monitoring servers, and their monitoring agents. The Tivoli Data Warehouse server is an optional part of IBM Tivoli Monitoring. It controls the storage and access to historical monitoring information. The IBM Tivoli Monitoring software application product provides a way to monitor the availability and performance of the network elements in an enterprise environment.

IBM Tivoli Monitoring features can perform these tasks:

- Monitor for alerts on the systems using predefined situations or custom situations
- Establish performance thresholds
- Trace the causes leading to an alert
- Gather comprehensive data about system conditions
- Use policies to perform actions, schedule work, and automate manual tasks

Important agent installation prerequisite

- Must be installed and configured before agent installation

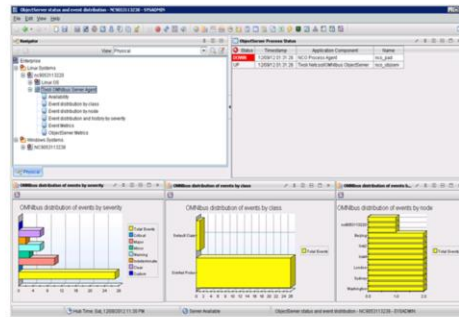


© 2013 IBM Corporation

The diagram on this slide displays the various components of an IBM Tivoli Monitoring system. These components include clients, servers, monitoring agents, and databases. The IBM Tivoli Monitoring Agent for Netcool/OMNIBus 7.3.1 falls into the category of **Other*** monitoring agents in this diagram. In order to install, configure, and use ITM Agent for IBM Netcool/OMNIBus 7.3.1, an operational ITM client, server, and database environment and an IBM Tivoli Netcool/OMNIBus 7.3.1 ObjectServer must all be up and running. The agent is not a stand-alone product.

ITM agent for IBM Tivoli Netcool/OMNIbus 7.3.1 benefits

- The ITM agent for Tivoli Netcool OMNIbus Agent provides these benefits:
 - Monitors IBM Tivoli Netcool OMNIbus performance, automation triggers, and event activity
 - Reads directly from files created by the ObjectServer



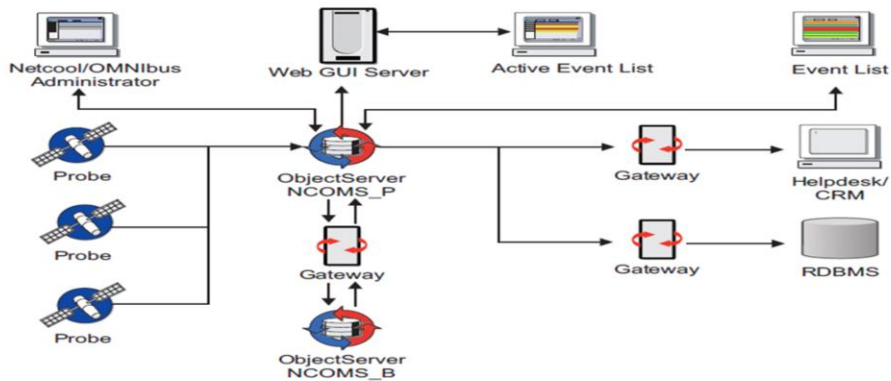
© 2013 IBM Corporation

The IBM Tivoli Monitoring for Netcool/OMNIbus Agent provides you with the capability to monitor IBM Tivoli Netcool/OMNIbus ObjectServers.

The agent reads from files created by an IBM Tivoli Netcool/OMNIbus ObjectServer. No special or additional privileges are required to run this agent.

Monitoring the IBM Tivoli Netcool/OMNIBus 7.3.1 ObjectServer

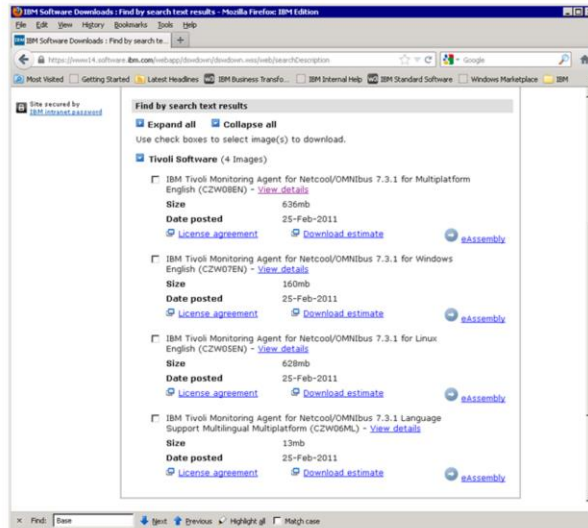
- IBM Tivoli Netcool/OMNIBus system component architecture



© 2013 IBM Corporation

The IBM Tivoli Netcool/OMNIBus system collects enterprise-wide event information from a wide variety of IT network resources in real time. The Event List and WebGUI Active Event List components present consolidated views of this information. Note that the ITM Agent for IBM Tivoli Netcool/OMNIBus only monitors the ObjectServer. It does not monitor the other IBM Tivoli Netcool/OMNIBus components.

Download appropriate IBM Tivoli Netcool/OMNibus agent software



© 2013 IBM Corporation

Download IBM Tivoli Monitoring Agent for Netcool/OMNibus 7.3.1 for Linux English (for example, Part No. CZW05EN). Note that there might be multiple versions at your download site. Make sure that you download the latest version available and developed for the right Netcool/OMNibus version (for example, 7.3.1). It is critical that you install the right version of the agent that goes with the ObjectServer version.

Extract the file and start the installation

- Download and extract the software, then begin the installation

```

[vsurath@ec9653113270: /usr/files:/usr/ath:/omniagent]
# pwd
/usr/files:/usr/ath:/omniagent
# id
uid=500(vsurath) gid=0(root) groups=0(root)
# su root
Password:
[root@ec9653113270: omniagent]# id
uid=0(root) gid=0(root) groups=0(root),1(bin),2(demon),3(npc),4(adm),5(disk),10(wheel)
[root@ec9653113270: omniagent]# ls -la
total 540
drwxr-xr-x 5 vsurath root 4096 Dec 8 23:58
drwxr-xr-x 8 root root 4096 Dec 8 23:29
drwxr-xr-x 2 vsurath root 4096 Nov 18 2010 Deploy
-rw-r--r-- 1 vsurath root 1002 Jan 26 2009 deploy.sh
-rw-r--r-- 1 vsurath root 13300 Nov 18 2010 install.sh
-rw-r--r-- 1 vsurath root 734 Jan 26 2009 keystone.cfg
-rw-r--r-- 1 vsurath root 49128 Jan 26 2009 non_tba_license
-rw-r--r-- 1 vsurath root 25924 Jan 26 2009 notices
-rw-r--r-- 1 vsurath root 369 Nov 18 2010 README.TXT
drwxr-xr-x 3 vsurath root 4096 Nov 18 2010 REPORTS
-rw-r--r-- 1 vsurath root 2817 Jan 26 2009 silent_config.txt
-rw-r--r-- 1 vsurath root 2315 Jan 26 2009 silent_install.txt
drwxr-xr-x 5 vsurath root 4096 Nov 18 2010 unix
[root@ec9653113270: omniagent]# ./install.sh
INSTALL
Enter the name of the IBM Tivoli Monitoring directory
[ default = /opt/IBMTM | /home/vsurath/opt/IBMTM ]
ITM home directory "/home/vsurath/opt/IBMTM" already exists.
OK to use it [ 1=yes, 2=no; "1" is default ]? 1
The following processes are currently running:
Product = Monitoring Agent for Linux OS PID = 21385
install.sh warning: Existing products found to be running will be restarted during installation., continuing ...
Continue with this installation [ 1=yes, 2=no; "1" is default ]? 1
Processing. Please wait...
Stopping Watchdog process...
Watchdog process was stopped.
Stopping Monitoring Agent for Linux OS ...
Product Monitoring Agent for Linux OS was stopped gracefully.
Agent stopped...
/home/vsurath/opt/IBMTM
Select one of the following:
1) Install products to the local host.
2) Install products to depot for remote deployment (requires TEMS).
3) Install TEMS support for remote sending
4) Exit install.
Please enter a valid number:

```

© 2013 IBM Corporation

After you download the appropriate software, extract it to an installation location. Note and verify your IBM Tivoli Monitoring environment details such as the TEMS/TEP server name and ports used to connect.

Start the installation script by running `./install.sh`. When prompted, specify ITM install Directory, Review Prompts and Enter Response. For example, enter **1** for **Yes**, and **2** for **No**. When prompted, enter the option. For example, enter **1** to install products to the local host.

Installing the ITM Agent for IBM Tivoli Netcool/OMNibus 7.3.1 for Linux servers

Select **1** for **IBM Tivoli Monitoring components for this operating system**, then select **1) Monitoring Agent for Tivoli Netcool/OMNibus V07.31.00.00**

```

vswrath@rac9053113278:/usr/ath/monagent
1) IBM Tivoli Monitoring components for this operating system
2) Tivoli Enterprise Portal Browser Client support
3) Tivoli Enterprise Portal Desktop Client support
4) Tivoli Enterprise Portal Server support
5) Tivoli Enterprise Monitoring Server support
6) Other operating system

Type the number or type "q" to quit selection
[ number "1" or "IBM Tivoli Monitoring components for this operating system" is default ]: 1
You selected number "1" or "IBM Tivoli Monitoring components for this operating system"
Is the selection correct [ 1=yes, 2=no ; default is "1" ]? 1

The following products are available for installation:
1) Monitoring Agent for Tivoli Netcool/OMNibus V07.31.00.00
2) All of the above

Type the numbers for the products you want to install, type "q" to change operating system, or type "q" to quit select
ion.
If you enter more than one number, separate the numbers by a comma or a space.

Type your selections here: 2

The following products will be installed:
Monitoring Agent for Tivoli Netcool/OMNibus V07.31.00.00

We your selections correct [ 1=yes, 2=no ; default is "1" ]? 1
... installing "Monitoring Agent for Tivoli Netcool/OMNibus V07.31.00.00 for Linux x86_64 R2.6 (64 bit)": please wait
=> installed "Monitoring Agent for Tivoli Netcool/OMNibus V07.31.00.00 for Linux x86_64 R2.6 (64 bit)".

Do you want to install additional products or product support packages [ 1=yes, 2=no ; default is "2" ]? 1
Product packages are available for this operating system and component support categories:
1) IBM Tivoli Monitoring components for this operating system
2) Tivoli Enterprise Portal Browser Client support
3) Tivoli Enterprise Portal Desktop Client support
4) Tivoli Enterprise Portal Server support
5) Tivoli Enterprise Monitoring Server support
6) Other operating system

Type the number or type "q" to quit selection
[ number "1" or "IBM Tivoli Monitoring components for this operating system" is default ]: 1
You selected number "1" or "IBM Tivoli Monitoring components for this operating system"
Is the selection correct [ 1=yes, 2=no ; default is "1" ]? 1

```

© 2013 IBM Corporation

Enter number **1** for **IBM Tivoli Monitoring components for this operating system**, and confirm the selection. When the available product list for installation is presented, choose **1** for **Monitoring Agent for Tivoli Netcool/OMNibus V07.31.00.00**, or **2** (all of the above), confirm the selection, and proceed with the installation. You see a status message that reads **...installing Monitoring Agent for Netcool/OMNibus for Linux; please wait**. When the installation is complete, you see a text message indicating that **Monitoring Agent for Tivoli Netcool/OMNibus Linux is installed** as shown on this slide.

Enter **1** for the question **Do you want to install additional products or product support packages [1=Yes, 2=No ; default is "2"] ?**

Installing Tivoli Enterprise Portal browser client support

Select **2** for Tivoli Enterprise Portal Browser Client support, then confirm the selection

```

vsrath@nc903113220:~/USERFILES/vsrath/omnagent
Product packages are available for this operating system and component support categories:
1) IBM Tivoli Monitoring components for this operating system
2) Tivoli Enterprise Portal Browser Client support
3) Tivoli Enterprise Portal Desktop Client support
4) Tivoli Enterprise Portal Server support
5) Tivoli Enterprise Monitoring Server support
6) Other operating systems
Type the number or type "q" to quit selection
# number "1" or "IBM Tivoli Monitoring components for this operating system" is default |: 2
You selected number "2" or "Tivoli Enterprise Portal Browser Client support"
Is the selection correct [ 1=Yes, 2=No ; default is "1" ] ? 1
The following application supports are available for installation:
1) Monitoring Agent for Tivoli Netcool/OMNibus W07.31.00.00
2) all of the above
Type the numbers for the products you want to install, type "b" to change operating system, or type "q" to quit selection.
If you enter more than one number, separate the numbers by a comma or a space.
Type your selections here: 2
The following products will be installed:
Monitoring Agent for Tivoli Netcool/OMNibus W07.31.00.00
Are your selections correct [ 1=Yes, 2=No ; default is "1" ] ? 1
... installing "Monitoring Agent for Tivoli Netcool/OMNibus W07.31.00.00 for Tivoli Enterprise Portal Browser Client support"; please wait.
=> installed "Monitoring Agent for Tivoli Netcool/OMNibus W07.31.00.00 for Tivoli Enterprise Portal Browser Client support".

Do you want to install additional products or product support packages [ 1=Yes, 2=No ; default is "2" ] ? 1
Product packages are available for this operating system and component support categories:
1) IBM Tivoli Monitoring components for this operating system
2) Tivoli Enterprise Portal Browser Client support
3) Tivoli Enterprise Portal Desktop Client support
4) Tivoli Enterprise Portal Server support
5) Tivoli Enterprise Monitoring Server support
6) Other operating systems
Type the number or type "q" to quit selection
# number "1" or "IBM Tivoli Monitoring components for this operating system" is default |:

```

© 2013 IBM Corporation

Enter **2** for **Tivoli Enterprise Portal Browser Client support**, and confirm the selection. You see a status message indicating **... installing Monitoring Agent for Netcool/OMNibus ... for TEP Browser Client; please wait**. When the installation is complete, you see a text message indicating that the Monitoring Agent for TEP Browser Client is installed, as shown on this slide.

Enter **1** for the question **Do you want to install additional products or product support packages [1=Yes, 2=No ; default is "2"] ?**

Install the remaining support packages

Select the remaining support packages by repeating the same steps as described in the previous slides

```

vsurath@nc9053113220:/USERFILES/vsurath/omniagent
Monitoring Agent for Tivoli Netcool/OMNIBus V07.31.00.00
Are your selections correct [ 1=Yes, 2=No ; default is "1" ] ? 1
... installing "Monitoring Agent for Tivoli Netcool/OMNIBus V07.31.00.00 for Tivoli Enterprise Portal Server support"; please wait.
=> installed "Monitoring Agent for Tivoli Netcool/OMNIBus V07.31.00.00 for Tivoli Enterprise Portal Server support".

Do you want to install additional products or product support packages [ 1=Yes, 2=No ; default is "2" ] ? 1
Product packages are available for this operating system and component support categories:
  1) IBM Tivoli Monitoring components for this operating system
  2) Tivoli Enterprise Portal Browser Client support
  3) Tivoli Enterprise Portal Desktop Client support
  4) Tivoli Enterprise Portal Server support
  5) Tivoli Enterprise Monitoring Server support
  6) Other operating systems
Type the number or type "q" to quit selection
[ number "1" or "IBM Tivoli Monitoring components for this operating system" is default ]: 5
You selected number "5" or "Tivoli Enterprise Monitoring Server support"
Is the selection correct [ 1=Yes, 2=No ; default is "1" ] ? 1
The following application supports are available for installation:
  1) Monitoring Agent for Tivoli Netcool/OMNIBus V07.31.00.00
  2) all of the above
Type the numbers for the products you want to install, type "b" to change operating system, or type "q" to quit selection.
If you enter more than one number, separate the numbers by a comma or a space.
Type your selections here: 2
The following products will be installed:
Monitoring Agent for Tivoli Netcool/OMNIBus V07.31.00.00
Are your selections correct [ 1=Yes, 2=No ; default is "1" ] ? 1
... installing "Monitoring Agent for Tivoli Netcool/OMNIBus V07.31.00.00 for Tivoli Enterprise Monitoring Server support"; please wait.
=> installed "Monitoring Agent for Tivoli Netcool/OMNIBus V07.31.00.00 for Tivoli Enterprise Monitoring Server support".

Do you want to install additional products or product support packages [ 1=Yes, 2=No ; default is "2" ] ?

```

© 2013 IBM Corporation

Enter the support package number, and confirm the selection. You see a status message indicating **... installing selected support package; please wait**. When the installation is complete, you see a text message indicating that Monitoring Agent for selected package is installed, as shown on this slide. Enter **1** for the question **Do you want to install additional products or product support packages [1=Yes, 2=No ; default is "2"] ?**

Repeat the previous steps for remaining supported packages listed on the window, until all packages are installed: **3** for Tivoli Enterprise Portal Desktop Client support, **4** for Tivoli Enterprise Portal Server support, and **5** for Tivoli Enterprise Monitoring Server support.

After installing all the packages, enter **2** for the prompt **Do you want to install additional products or product support packages [1=Yes, 2=No ; default is "2"] ?**

Verify the installation

The newly installed Netcool/OMNibus agent is listed

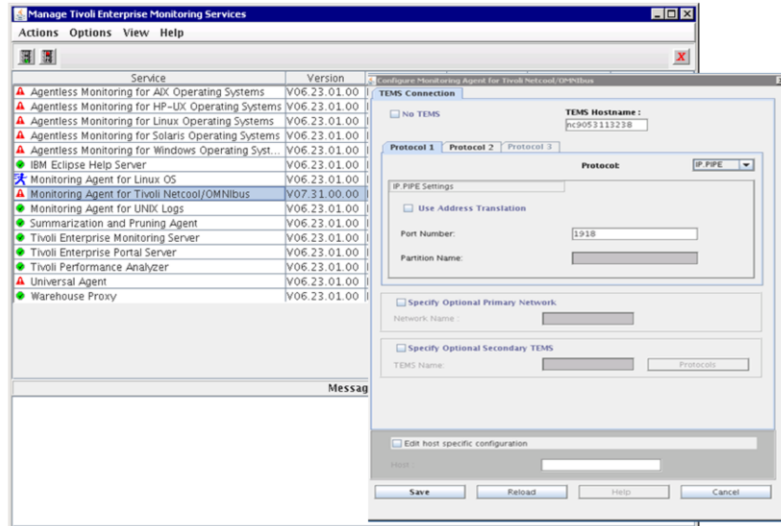
Service	Version	Platform	Configured	Status	Configuration
▲ Agentless Monitoring for AIX Operating Systems	V06.23.01.00	Linux x86_64...	No	N/A	N/A
▲ Agentless Monitoring for HP-UX Operating Systems	V06.23.01.00	Linux x86_64...	No	N/A	N/A
▲ Agentless Monitoring for Linux Operating Systems	V06.23.01.00	Linux x86_64...	No	N/A	N/A
▲ Agentless Monitoring for Solaris Operating Systems	V06.23.01.00	Linux x86_64...	No	N/A	N/A
▲ Agentless Monitoring for Windows Operating Syst...	V06.23.01.00	Linux x86_64...	No	N/A	N/A
● IBM Eclipse Help Server	V06.23.01.00	Linux Intel R2...	Yes	Stopped	N/A
● Monitoring Agent for Linux OS	V06.23.01.00	Linux x86_64...	Yes	Started	up-to-date
▲ Monitoring Agent for Tivoli Netcool/OMNibus	V07.31.00.00	Linux x86_64...	No	N/A	N/A
● Monitoring Agent for UNDK Logs	V06.23.01.00	Linux x86_64...	Yes	Stopped	up-to-date
● Summarization and Pruning Agent	V06.23.01.00	Linux x86_64...	Yes	Stopped	up-to-date
● Tivoli Enterprise Monitoring Server	V06.23.01.00	Linux x86_64...	Yes	Stopped	up-to-date
● Tivoli Enterprise Portal Server	V06.23.01.00	Linux x86_64...	No	Stopped	up-to-date
● Tivoli Performance Analyzer	V06.23.01.00	Linux x86_64...	Yes	Stopped	up-to-date
▲ Universal Agent	V06.23.01.00	Linux x86_64...	No	N/A	N/A
● Warehouse Proxy	V06.23.01.00	Linux x86_64...	Yes	Stopped	up-to-date

© 2013 IBM Corporation

To verify the agent installation, start the Manage Tivoli Enterprise Monitoring Services utility (./CandleManage) and verify that the newly installed Netcool/OMNibus agent is listed.

Configure the TEMS Connection for the agent

The **Configure TEMS Connection** for the newly installed Netcool/OMNIbus agent is listed



© 2013 IBM Corporation

Select the agent and configure the agent to connect to your TEMS server by providing the server name and the port number. If you do not have this information, consult your own company's local IBM Tivoli Monitoring administrator.

Start the IBM Tivoli Netcool/OMNibus agent

The newly installed Netcool/OMNibus agent is listed, configured, and started

Service	Version	Platform	Configured	Status	Configuration
Agentless Monitoring for AIX Operating Systems	V06.23.01.00	Linux x86_6...	No	N/A	N/A
Agentless Monitoring for HP-UX Operating Systems	V06.23.01.00	Linux x86_6...	No	N/A	N/A
Agentless Monitoring for Linux Operating Systems	V06.23.01.00	Linux x86_6...	No	N/A	N/A
Agentless Monitoring for Solaris Operating Systems	V06.23.01.00	Linux x86_6...	No	N/A	N/A
Agentless Monitoring for Windows Operating Systems	V06.23.01.00	Linux x86_6...	No	N/A	N/A
IBM Eclipse Help Server	V06.23.01.00	Linux Intel R...	Yes	Stopped	N/A
Monitoring Agent for Linux OS	V06.23.01.00	Linux x86_6...	Yes	Started	up-to-date
Monitoring Agent for Tivoli Netcool/OMNibus	V07.31.00.00	Linux x86_6...	Yes	Started	up-to-date
Monitoring Agent for UNDK Logs	V06.23.01.00	Linux x86_6...	Yes	Stopped	up-to-date
Summarization and Pruning Agent	V06.23.01.00	Linux x86_6...	Yes	Stopped	up-to-date
Tivoli Enterprise Monitoring Server	V06.23.01.00	Linux x86_6...	Yes	Stopped	up-to-date
Tivoli Enterprise Portal Server	V06.23.01.00	Linux x86_6...	No	Stopped	up-to-date
Tivoli Performance Analyzer	V06.23.01.00	Linux x86_6...	Yes	Stopped	up-to-date
Universal Agent	V06.23.01.00	Linux x86_6...	No	N/A	N/A
Warehouse Proxy	V06.23.01.00	Linux x86_6...	Yes	Stopped	up-to-date

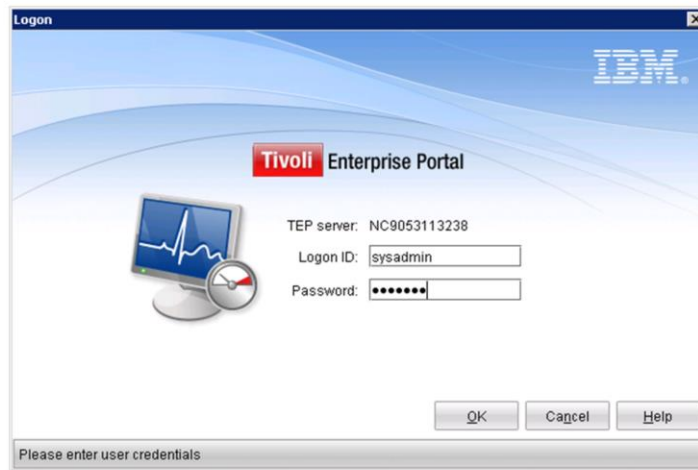
Messages

```
Monitoring Agent for Tivoli Netcool/OMNibus for Linux x86_64 R2.6 (64 bit) configured.
Starting Tivoli Enterprise Monitoring Server, please wait ...
It can take up to ten minutes.
Executing Tivoli Enterprise Monitoring Server startup script.
Tivoli Enterprise Monitoring Server startup script finished.
Starting Monitoring Agent for Tivoli Netcool/OMNibus, please wait ...
Monitoring Agent for Tivoli Netcool/OMNibus started.
```

© 2013 IBM Corporation

After the agent is configured to connect to the Tivoli Enterprise Monitoring server, start the newly installed Netcool/OMNibus agent. When you complete these steps, the status of the agent indicates that the Netcool/OMNibus agent is configured and started.

Start Tivoli Enterprise Portal and log in



© 2013 IBM Corporation

Start the Tivoli Enterprise Portal desktop and log in with a valid user logon ID and password.

Check the Tivoli Enterprise Portal Navigator for the OMNibus Agent

The screenshot displays the Tivoli Enterprise Portal Navigator interface. The main window is titled "ObjectServer status and event distribution - NC9053113238 - SYSADMIN". The interface is divided into several sections:

- Navigator:** A tree view on the left showing the hierarchy: Enterprise > Linux Systems > nc9053113220 > Linux OS > Tivoli OMNibus Server Agent.
- ObjectServer Process Status:** A table showing the status of the ObjectServer process. The table has columns for Status, Timestamp, Application Component, and Name. The data is as follows:

Status	Timestamp	Application Component	Name
DOWN	12/09/12 00:57:26	NCO Process Agent	nce_psd
UP	12/09/12 00:57:26	Tivoli Netcool/OMNibus ObjectServer	nce_objsm
- Event Distribution Charts:** Three charts are displayed at the bottom, each showing the distribution of events by severity, class, and node. The charts are currently empty, indicating that no data has been collected yet.

The status bar at the bottom indicates "Hub Time: Sat, 12/08/2012 10:58 PM" and "Server Available".

© 2013 IBM Corporation

When you log in to the Tivoli Enterprise Portal desktop, check the physical view navigation tree. The OMNibus agent is listed. Note that the Netcool/OMNibus agent is not yet configured to collect data. Little or no useful data is provided at this point. After the Netcool/OMNibus agent is configured, you should see meaningful data from the ObjectServer.

Summary

Now that you have completed this module, you can perform the following tasks:

- Describe at a high level the functionality of IBM Tivoli Monitoring
- Describe at a high level the functionality of the ITM Agent for IBM Tivoli Netcool/OMNIBus 7.3.1
- Successfully perform an installation of the ITM Agent for IBM Tivoli Netcool/OMNIBus 7.3.1 on a Linux server

Now that you have completed this training module, you can perform these tasks:

- Understand at high-level various components of the IBM Tivoli Monitoring product and their function.
- Understand at high-level the functions of the various components of both Tivoli Netcool/OMNIBus and the IBM Tivoli Monitoring Agent for Netcool/OMNIBus.
- Perform the download and installation of the IBM Tivoli Monitoring Agent for Netcool/OMNIBus version 7.3.1.

Reference

http://pic.dhe.ibm.com/infocenter/tivihelp/v15r1/topic/com.ibm.itm.doc_6.2.3/welcome.html

http://publib.boulder.ibm.com/infocenter/tivihelp/v8r1/topic/com.ibm.help.ic.doc/iehs36_viewinfo.html

For more detail, see the IBM Tivoli Monitoring and OMNibus product documentation listed on this slide.



Trademarks, disclaimer, and copyright information

IBM, the IBM logo, ibm.com, Netcool, and Tivoli are trademarks or registered trademarks of International Business Machines Corp., registered in many jurisdictions worldwide. Other product and service names might be trademarks of IBM or other companies. A current list of other IBM trademarks is available on the web at "[Copyright and trademark information](http://www.ibm.com/legal/copytrade.shtml)" at <http://www.ibm.com/legal/copytrade.shtml>

Linux is a registered trademark of Linus Torvalds in the United States, other countries, or both.

Other company, product, or service names may be trademarks or service marks of others.

THE INFORMATION CONTAINED IN THIS PRESENTATION IS PROVIDED FOR INFORMATIONAL PURPOSES ONLY. WHILE EFFORTS WERE MADE TO VERIFY THE COMPLETENESS AND ACCURACY OF THE INFORMATION CONTAINED IN THIS PRESENTATION, IT IS PROVIDED "AS IS" WITHOUT WARRANTY OF ANY KIND, EXPRESS OR IMPLIED. IN ADDITION, THIS INFORMATION IS BASED ON IBM'S CURRENT PRODUCT PLANS AND STRATEGY, WHICH ARE SUBJECT TO CHANGE BY IBM WITHOUT NOTICE. IBM SHALL NOT BE RESPONSIBLE FOR ANY DAMAGES ARISING OUT OF THE USE OF, OR OTHERWISE RELATED TO, THIS PRESENTATION OR ANY OTHER DOCUMENTATION. NOTHING CONTAINED IN THIS PRESENTATION IS INTENDED TO, NOR SHALL HAVE THE EFFECT OF, CREATING ANY WARRANTIES OR REPRESENTATIONS FROM IBM (OR ITS SUPPLIERS OR LICENSORS), OR ALTERING THE TERMS AND CONDITIONS OF ANY AGREEMENT OR LICENSE GOVERNING THE USE OF IBM PRODUCTS OR SOFTWARE.

© Copyright International Business Machines Corporation 2013. All rights reserved.