

InfoSphere Master Data Management for PIM

How to install Scripting Workbench



© 2012 IBM Corporation

This presentation explains how to install the Scripting Workbench in InfoSphere® Master Data Management Server for Product Information Management. This presentation walks you through installing the workbench in Rational® Software Studio, known as RSA.

Terminology

- Product - InfoSphere Master Data Management Server for Product Information Management also known as InfoSphere MDM Server for PIM
- IDE – Integrated Development Environment
- RSA – Rational Software Architect
- Workbench – Eclipse-based set of tools that help create and update scripts and Java extension points

Before going into details, there is some terminology you need to be aware of. The official name of the product referenced in this presentation is IBM InfoSphere Master Data Management Server for Product Information Management, also known as InfoSphere MDM Server for PIM.

IDE refers to Integrated Development Environment.

RSA refers to Rational Software Architect which is the IDE where the workbench is installed.

The workbench is an Eclipse-based set of tools that help create and update scripts and Java extension points.

Objectives

- Learn how to install IBM InfoSphere MDM Server for PIM Workbench
- Not discussed
 - Creating scripts or Java code



After viewing this presentation, you will know how to install the IBM InfoSphere MDM Server for PIM Workbench. This presentation is not meant to help you in creating and writing scripts, or Java code, in the workbench.

Pre-requisites

- Uninstall alphaWorks® workbench
http://pic.dhe.ibm.com/infocenter/pim/v9r1m0/index.jsp?topic=%2Fcom.ibm.pim.dep.doc%2Fdeveloping%2Fpim_tsk_installingscripteditor.html
- Download through Passport Advantage® website
- Part number V9.1 CZXH5ML
- Workbench -> workbench-9.1.0.zip



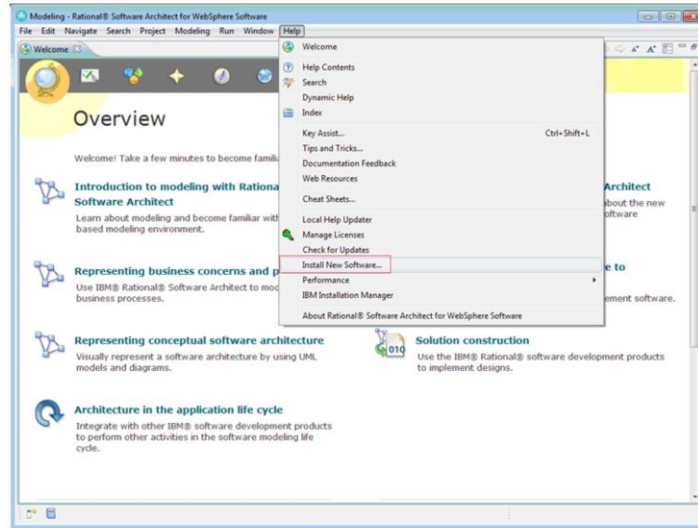
4

How to install Scripting Workbench

Before installing the new workbench, uninstall the alphaWorks version of the workbench that was available before this release. In order to install the workbench, you will need to download the required file from the Passport Advantage site. Search for InfoSphere MDM Server for PIM or the part number CZXH5ML.

Once you've downloaded the file, extract the contents from the folder 'Workbench'. The file needed for the workbench install is workbench-9.1.0.zip.

Installing the workbench (1 of 5)



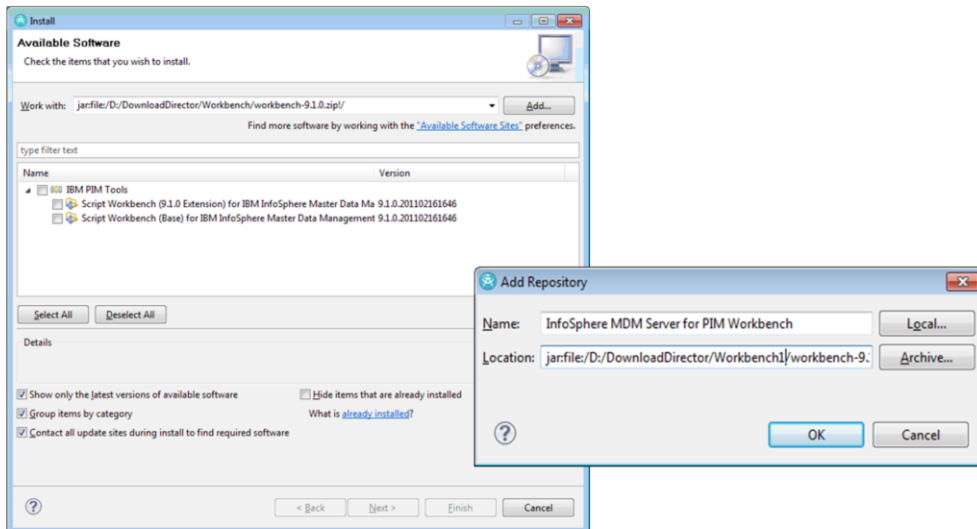
5

How to install Scripting Workbench

© 2012 IBM Corporation

Once you have the required files, open RSA and create a new workspace if you have not already done so. Then, access the “Install New Software” from the Help menu.

Installing the workbench (2 of 5)



6

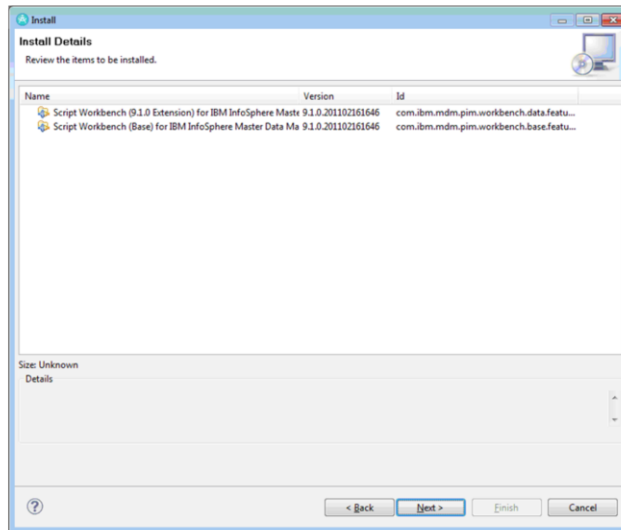
How to install Scripting Workbench

© 2012 IBM Corporation

You will see a new window as displayed on this slide. Click Add and you will see the 'Add Repository' window. Provide a name and click the 'Archive' button and find the extracted workbench-9.1.0.zip file.

After this, click 'OK'. You will return to the 'Install' window. Select 'IBM PIM Tools' and click 'Next'.

Installing the workbench (3 of 5)



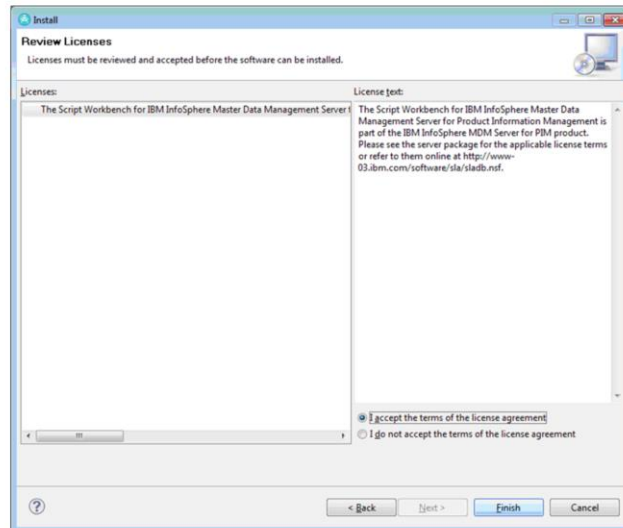
7

How to install Scripting Workbench

© 2012 IBM Corporation

Click "Next" to continue the workbench install.

Installing the workbench (4 of 5)



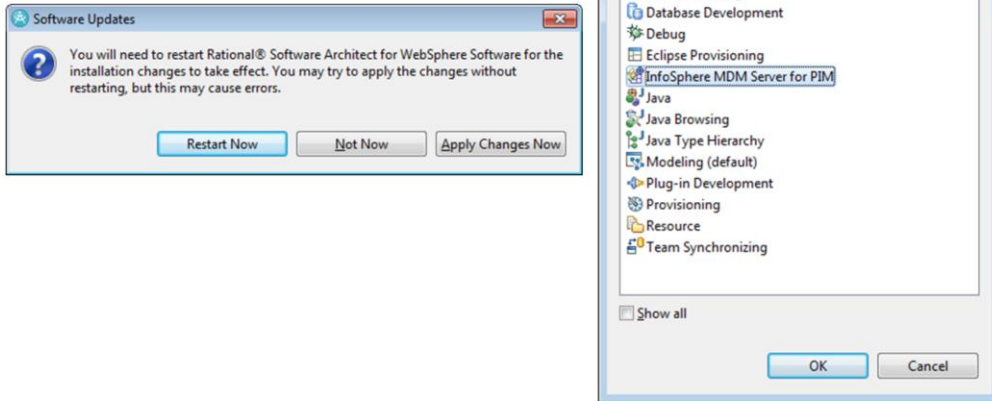
8

How to install Scripting Workbench

© 2012 IBM Corporation

Now, you see the 'Review Licenses' window. Review the license and accept the terms, then click 'Finish'.

Installing the workbench (5 of 5)



9

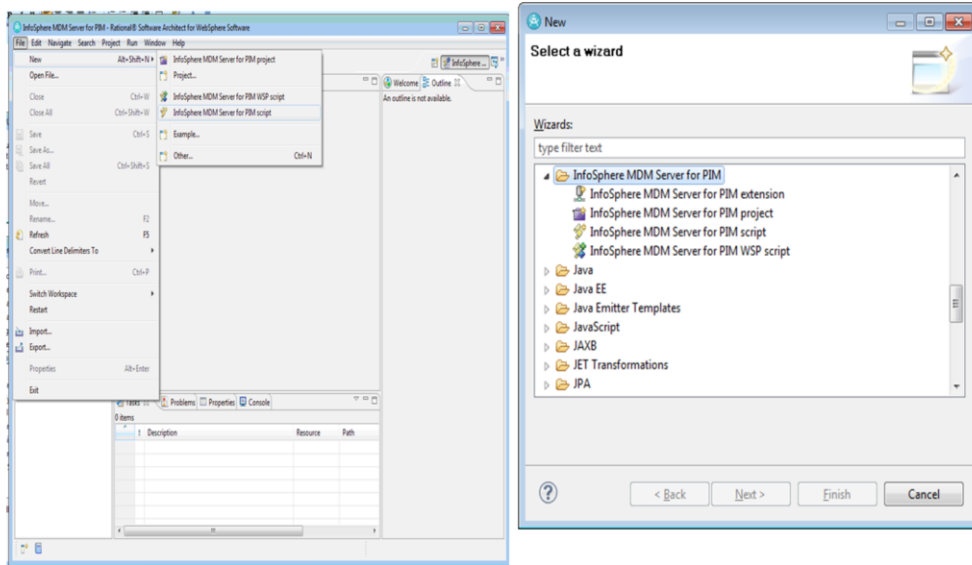
How to install Scripting Workbench

© 2012 IBM Corporation

After the workbench is finished installing, you will see the 'Software Updates' window prompting you to restart your system. Ensure you restart and reopen your workspace.

After restarting, you will have the 'InfoSphere MDM Server for PIM' in the list of Perspectives.

Confirm install



10

How to install Scripting Workbench

© 2012 IBM Corporation

In order to confirm the installation of the workbench, ensure that you have the menus to create the 'InfoSphere MDM Server for PIM extension', the 'InfoSphere MDM Server for PIM project', the 'InfoSphere MDM Server for PIM WSP script', and the 'InfoSphere MDM Server for PIM script'.

Call support provider

- Gather information first
 - Problem in detail
- Screen capture of user interface
- Exact product version



If you need assistance, contact your support provider. Be prepared to provide a detailed problem description. A screen capture of the user interface showing the error is also needed. Provide the product version being used with the fix pack installed and the database version.

Resources

- Product documentation - Information center:
 - <http://pic.dhe.ibm.com/infocenter/pim/v9r1m0/index.jsp>
- Uninstalling alphaWorks version:
http://pic.dhe.ibm.com/infocenter/pim/v9r1m0/index.jsp?topic=%2Fcom.ibm.pim.dep.doc%2Fdeveloping%2Fpim_tsk_installingscripteditor.html
- Installing the Workbench:
http://pic.dhe.ibm.com/infocenter/pim/v9r1m0/topic/com.ibm.pim.dep.doc/developing/pim_tsk_installingscripteditor.html?resultof=%22workbench%22
- Support Portal:
http://www-947.ibm.com/support/entry/portal/Overview/Software/Information_Management/InfoSphere_Master_Data_Management_Server_for_Product_Information_Management
- Technote
 - Which Rational Software Architect files do I download?
<http://www-01.ibm.com/support/docview.wss?uid=swg21571139>

For reference, this slide displays links that you might find useful.

Trademarks, disclaimer, and copyright information

IBM, the IBM logo, ibm.com, alphaWorks, InfoSphere, Passport Advantage, and Rational are trademarks or registered trademarks of International Business Machines Corp., registered in many jurisdictions worldwide. Other product and service names might be trademarks of IBM or other companies. A current list of other IBM trademarks is available on the web at "[Copyright and trademark information](http://www.ibm.com/legal/copytrade.shtml)" at <http://www.ibm.com/legal/copytrade.shtml>

THE INFORMATION CONTAINED IN THIS PRESENTATION IS PROVIDED FOR INFORMATIONAL PURPOSES ONLY. WHILE EFFORTS WERE MADE TO VERIFY THE COMPLETENESS AND ACCURACY OF THE INFORMATION CONTAINED IN THIS PRESENTATION, IT IS PROVIDED "AS IS" WITHOUT WARRANTY OF ANY KIND, EXPRESS OR IMPLIED. IN ADDITION, THIS INFORMATION IS BASED ON IBM'S CURRENT PRODUCT PLANS AND STRATEGY, WHICH ARE SUBJECT TO CHANGE BY IBM WITHOUT NOTICE. IBM SHALL NOT BE RESPONSIBLE FOR ANY DAMAGES ARISING OUT OF THE USE OF, OR OTHERWISE RELATED TO, THIS PRESENTATION OR ANY OTHER DOCUMENTATION. NOTHING CONTAINED IN THIS PRESENTATION IS INTENDED TO, NOR SHALL HAVE THE EFFECT OF, CREATING ANY WARRANTIES OR REPRESENTATIONS FROM IBM (OR ITS SUPPLIERS OR LICENSORS), OR ALTERING THE TERMS AND CONDITIONS OF ANY AGREEMENT OR LICENSE GOVERNING THE USE OF IBM PRODUCTS OR SOFTWARE.

© Copyright International Business Machines Corporation 2012. All rights reserved.