

IBM Tivoli Monitoring V6.3

Version of Agent Builder agents

© 2014 IBM Corporation



This module illustrates the process to increase the version of an Agent Builder agent.

Assumptions

Before you proceed, you must have these prerequisites in place:

- Tivoli® Monitoring Agent Builder tool is installed on a supported Microsoft® Windows® machine

For the purposes of this illustration, you must have the Tivoli Monitoring Agent Builder tool installed on a supported Microsoft Windows machine.

Objectives

When you complete this module, you can perform these tasks:

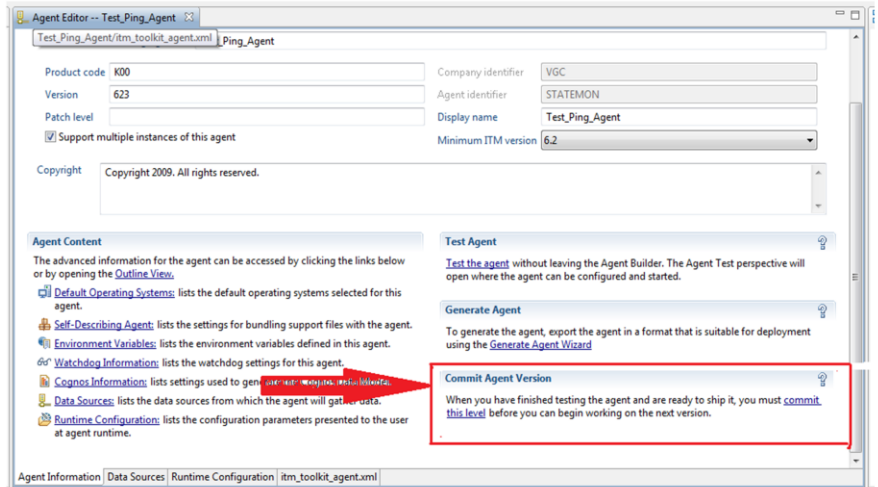
- Commit a version of the agent
- Modifications to the agent: Allowed actions
- Modifications to the agent: Prohibited actions
- Changes to product code and version

When you complete this module, you can commit a version of the agent, understand allowed and prohibited actions, and change the product code and version.

Commit a version of the agent

To commit an agent

- Open the Agent Editor window, Agent Information page.
- In the Commit Agent Version area, click commit this level.
- There is a limit of 1024 versions.



Tivoli Monitoring systems require that new versions of an agent include all of the information that is contained in the previous versions of that agent.

Including all information from previous versions is necessary so workspaces, situations, and queries continue to work with a mixture of old and new agents.

After you develop and test an agent, you must commit the agent. There is a limit of 1024 versions.

To commit:

In the Agent Builder tool, Open the Agent Editor window, Agent Information page.

In the Commit Agent Version area, click commit this level.

Back up the committed agent or check it into your version control system.

After you commit an agent, any additional changes to the agent are part of a new version. You must enter the new version number before the additional changes can be saved. Any changes to the new version must not break compatibility with previous versions of the agent.

Modifications to the agent: Allowed actions

You can complete the following actions after you commit the agent:

- Add new attributes to existing attribute groups
- Add new attribute groups
- Reorder new attributes
- Organize new attribute groups by using navigator items
- Create new subnode types
- Add new queries
- Add new situations
- Add new workspaces

After you commit the agent, you can complete any or all of the actions that are listed here.

Modifications to the agent: Prohibited actions

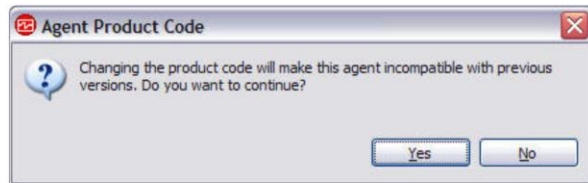
The following actions are prohibited on objects that existed before the agent was committed:

- Delete attribute groups
- Reorder existing attributes in an attribute group
- Reorganize existing attribute groups (by using Navigator items)
- Delete attributes from an attribute group
- Move attribute groups or navigator groups into or out of subnodes
- Rename attribute groups
- Rename attributes
- Change data types of existing attributes
- Change a subnode name or type if it contains an attribute group that existed before the agent was committed

After you commit the agent, you cannot complete the actions that are shown here on objects that existed before the agent was committed.

(1 of 2) Change the product code of the agent

- If you change the product code, you have an agent that is incompatible with any previous version of the agent
 - Any records of previous commit actions are lost and you are developing a new agent
 - If you try to change the product code, you are reminded of this deletion and asked if you want to continue
 - Application support files that are imported into the project are lost

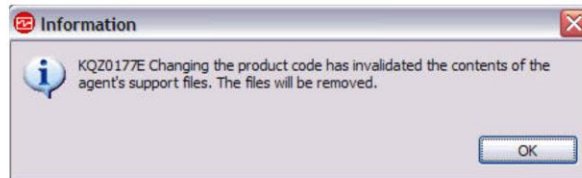


If you change the product code, you have an agent that is incompatible with any previous version of the agent. Any records of previous commit actions are lost and you are developing a new agent.

Any files, situations, Take Action commands, or workspaces that you exported from IBM Tivoli Monitoring and imported into the agent are deleted from the agent. If you try to change the product code, you are reminded of this deletion and asked if you want to continue.

(2 of 2) Change the product code of the agent

- When you click Yes in the Agent Product Code window, warning window is displayed

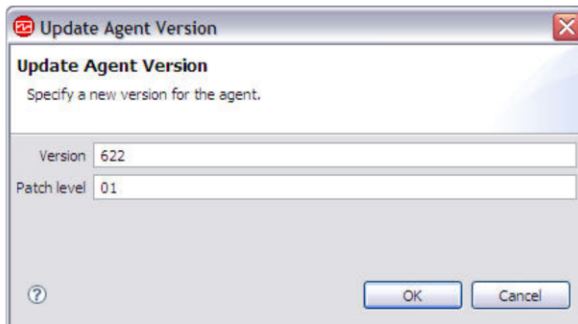


When you click Yes in the Agent Product Code window, you are warned that the contents of the agent support files are no longer valid. You are also warned that the files will be removed next time the agent is saved.

Changing a subsequent version of your agent

To save changes to a committed agent, you must first enter a new version number.

- Open the Agent Editor window, Agent Information page.
- Enter a new version or patch level after the Version prompt.



You must enter a new version number to make and save changes to the agent. Make the edits to your agent. If you forget to change the agent version, you are prompted for the new version when you save any of your changes.

Changes in itm_toolkit_agent.xml file

- These tags are updated after you increase the version of the agent:
<AGENT_SHIP_DATE date="2014-09-10" product_version="622"/> version="2">
<PRODUCT_VERSION initial_product_version="622" product_version="623"/>
<AGENT_VERSION value="2"/>
<attribute cnp_name="Date" column_id="DATE" help_text="Date of last ping" show_attr_cnp="true" version="2">

Some tags in the agent itm_toolkit_xml file are updated after you increase the version of the agent.

The version property in AGENT_SHIP_DATE XML tag is updated to the next number.

The product_version property is added or updated to the version specified on the version field in the Agent Information page.

The AGENT_VERSION value is increased to the next number.

When a new attribute is added, the new version of the agent is added to the version property of the attribute. The version of the existing attributes does not change.

Summary

- Now that you completed this module, you can perform these tasks:
 - Commit a version of the agent
 - Modifications to the agent: Allowed actions
 - Modifications to the agent: Prohibited actions
 - Changes to product code and version

Now that you completed this module, you can commit a version of the agent, understand allowed and prohibited actions, and change the product code and version.

Trademarks, disclaimer, and copyright information

IBM, the IBM logo, ibm.com, and Tivoli are trademarks or registered trademarks of International Business Machines Corp., registered in many jurisdictions worldwide. Other product and service names might be trademarks of IBM or other companies. A current list of other IBM trademarks is available on the web at "[Copyright and trademark information](http://www.ibm.com/legal/copytrade.shtml)" at <http://www.ibm.com/legal/copytrade.shtml>

Microsoft, Windows, and the Windows logo are registered trademarks of Microsoft Corporation in the United States, other countries, or both.

Other company, product, or service names may be trademarks or service marks of others.

THE INFORMATION CONTAINED IN THIS PRESENTATION IS PROVIDED FOR INFORMATIONAL PURPOSES ONLY. WHILE EFFORTS WERE MADE TO VERIFY THE COMPLETENESS AND ACCURACY OF THE INFORMATION CONTAINED IN THIS PRESENTATION, IT IS PROVIDED "AS IS" WITHOUT WARRANTY OF ANY KIND, EXPRESS OR IMPLIED. IN ADDITION, THIS INFORMATION IS BASED ON IBM'S CURRENT PRODUCT PLANS AND STRATEGY, WHICH ARE SUBJECT TO CHANGE BY IBM WITHOUT NOTICE. IBM SHALL NOT BE RESPONSIBLE FOR ANY DAMAGES ARISING OUT OF THE USE OF, OR OTHERWISE RELATED TO, THIS PRESENTATION OR ANY OTHER DOCUMENTATION. NOTHING CONTAINED IN THIS PRESENTATION IS INTENDED TO, NOR SHALL HAVE THE EFFECT OF, CREATING ANY WARRANTIES OR REPRESENTATIONS FROM IBM (OR ITS SUPPLIERS OR LICENSORS), OR ALTERING THE TERMS AND CONDITIONS OF ANY AGREEMENT OR LICENSE GOVERNING THE USE OF IBM PRODUCTS OR SOFTWARE.

© Copyright International Business Machines Corporation 2014. All rights reserved.