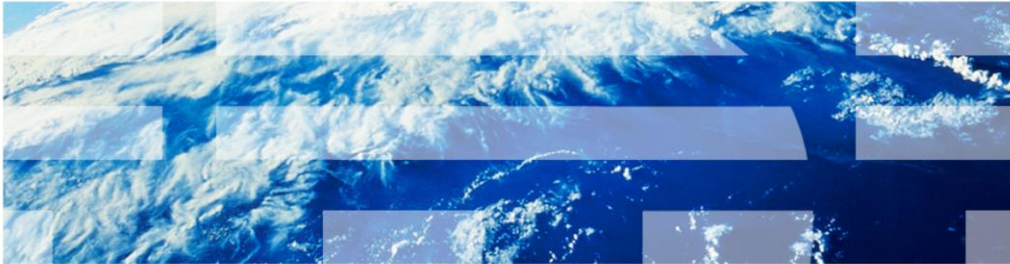


IBM Tivoli Monitoring V6.2.2

Configuring Windows API for the Agentless Monitoring for Windows operating systems



© 2012 IBM Corporation

IBM Tivoli Monitoring V6.2.2, Configuring Windows API for the Agentless Monitoring for Windows operating systems. In this module, you learn the main steps involved in configuring an Agentless Monitoring for Windows operating systems with Windows API.

Assumptions

Before you proceed, the module designer assumes that you have:

- Knowledge of Tivoli Monitoring
- A Tivoli Monitoring environment that includes a Tivoli Enterprise Monitoring Server, a Tivoli Enterprise Portal Server, and a Tivoli Enterprise Portal desktop or browser client

The module developer assumes that you have knowledge of Tivoli Monitoring and that you have a functioning Tivoli Monitoring environment that comprises these components:

- Tivoli Enterprise Monitoring Server
- Tivoli Enterprise Portal Server
- Tivoli Enterprise Portal client

Objectives

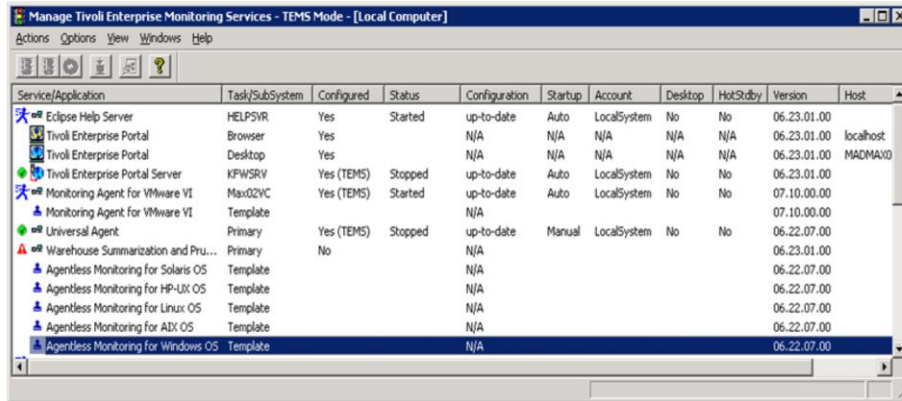
When you complete this module, you can perform these tasks:

- Configure the Tivoli Agentless Monitoring agent on Windows with Windows API
- Start the Tivoli Agentless Monitoring agent on Windows
- View the data that is obtained by the Agentless Monitor on the Tivoli Enterprise Portal

When you complete this module, you can configure and start the Tivoli Monitoring Agentless agent and connect to a Tivoli Enterprise Portal to view data collected by the monitoring agent.

(1 of 5) Configuring the agent

- Open the Manage Tivoli Enterprise Monitoring Services
- Select the template for the agent type
- Enter the requested information



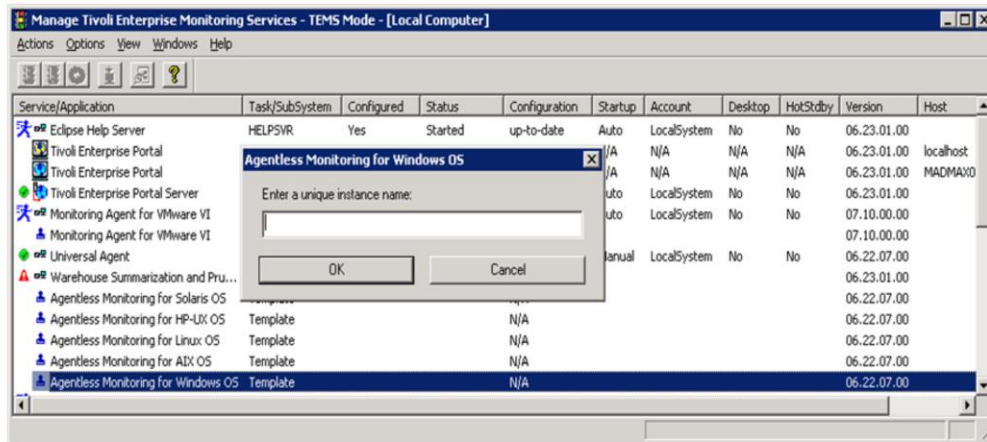
Configuring Windows API for the Agentless Monitor for Windows

© 2012 IBM Corporation

After the Tivoli Monitoring Agentless Monitor for Windows agent is installed, the Agentless agent template is available in Manage Tivoli Enterprise Monitoring Services. It is highlighted in the screen capture.

(2 of 5) Configuring the agent

- Enter the name of Instance
- Click **OK**



Configuring Windows API for the Agentless Monitor for Windows

© 2012 IBM Corporation

For Windows, you can configure the Agentless agent with one of these four methods:

1. **itmcmd** command.
2. **tacmd** command.
3. In the Tivoli Enterprise Portal GUI, right-click the Agentless icon and click **Configure**.
4. Manage Tivoli Enterprise Monitoring Services.

The last method is shown in this presentation.

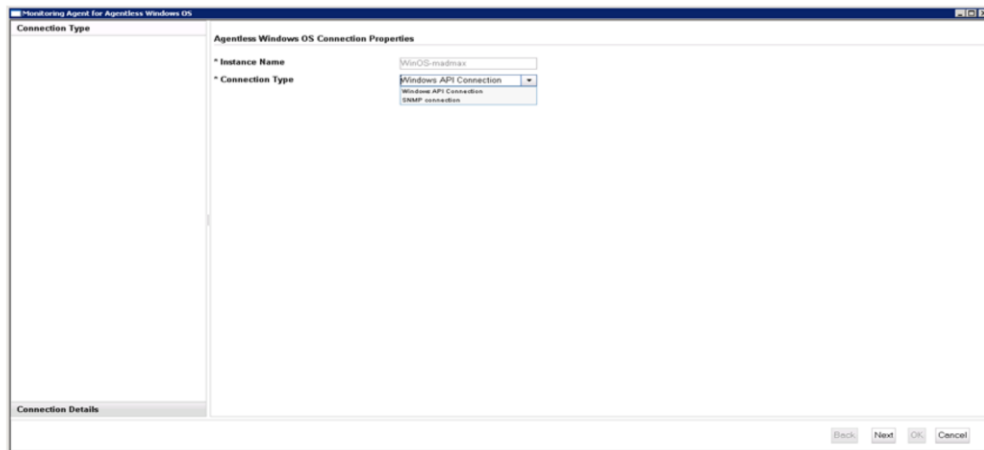
When you double-click the **Agentless Template**, the configuration window displays.

Enter the **Instance name** of the agent in the configuration window.

Click **OK**.

(3 of 5) Configuring the agent

- Select **Windows API Connection** for **Connection Type**
- Click **Next**



Configuring Windows API for the Agentless Monitor for Windows

© 2012 IBM Corporation

An Agentless Monitor obtains data from the nodes it monitors with a remote Application Programming Interface (API), Simple Network Management Protocol (SNMP), Common Information Model (CIM), or Windows Management Instrumentation (WMI) that runs on the node being monitored.

For Windows, there are two choices for connection type. They are **Windows API** and **Simple Network Management Protocol**.

Choose **Windows API Connection** for **Connection Type**.

Click **Next**.

(4 of 5) Configuring the agent

- Enter the password of the remote system
- Click **Next**

Monitoring Agent for Agentless Windows OS

Connection Type
Windows API Connection

Windows remote host connection properties

* Remote Windows password [masked]
* Confirm Remote Windows password [masked]

Windows API System Details

Back Next OK Cancel

Configuring Windows API for the Agentless Monitor for Windows

© 2012 IBM Corporation

When prompted, enter the password of the remote system that is monitored and confirm it.

Click **Next**.

(5 of 5) Configuring the agent

- Click **New** button
- Enter details for the remote system
- Click **OK**

Monitoring Agent for Agentless Windows OS

Managed System Details

Remote Managed System

Delete

* Managed System Name madmax02-WM

* Remote Windows host madmax02.rtp.raleigh.ibm.com

* Remote Windows DOMAIN user name Administrator

Advanced Windows API Connection

* Remote Windows password *****

* Confirm Remote Windows password *****

Back Next OK Cancel

Configuring Windows API for the Agentless Monitor for Windows

© 2012 IBM Corporation

This screen contains a button labeled **New**. To display the additional configuration information, click **New**.

The **Managed System Details** screen displays.

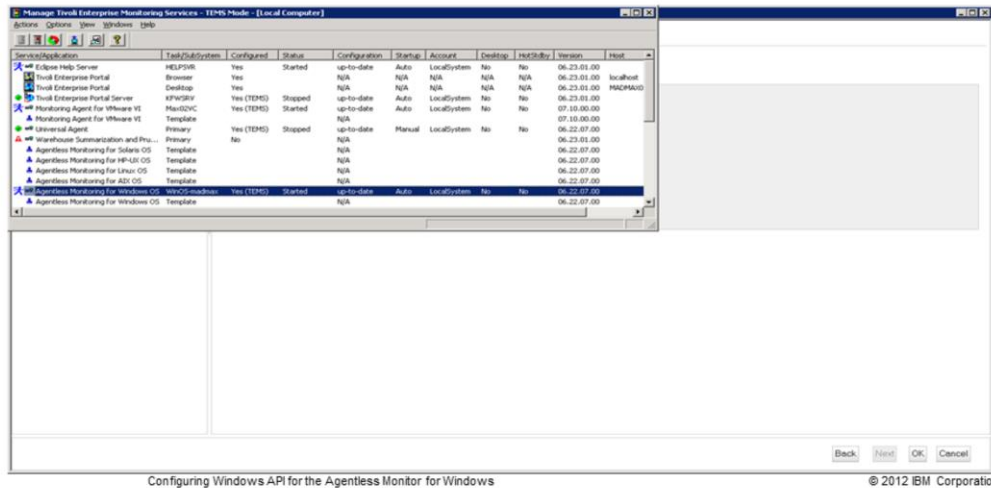
Enter the **Managed System Name**. It is the name that displays in the Tivoli Enterprise Portal Navigator tree for that host.

You must type the fully qualified name for the remote host.

Click **OK**.

Starting the agent

- Note the new service in the Manage Tivoli Enterprise Monitoring Services
- Start the service



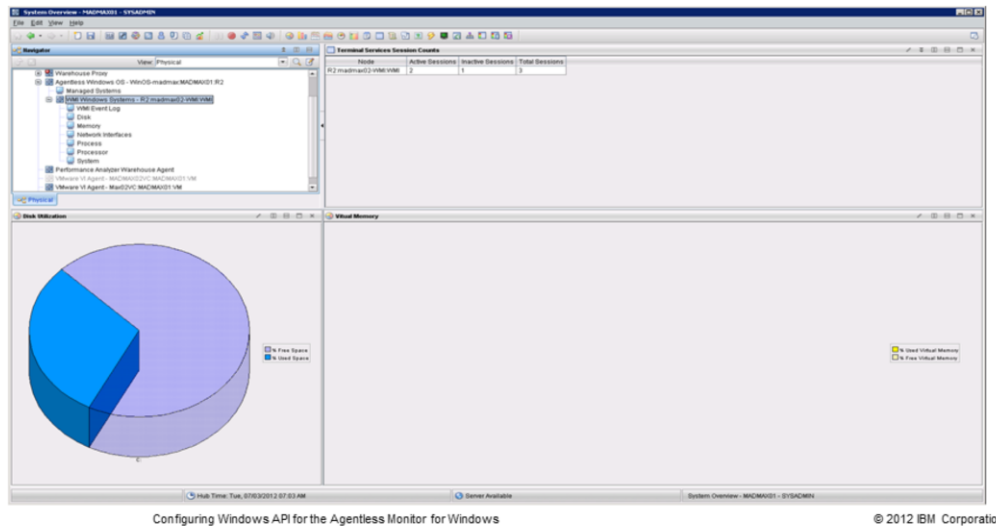
After the agent is successfully configured, an entry for this agent displays in the **Manage Tivoli Enterprise Monitoring Services** window.

You can see the defined instance name is listed for the newly configured agent.

To start the agent in the window, double-click the agent entry.

Verifying the agent data in the Tivoli Enterprise Portal client

The **Managed System Name** is displayed in the Tivoli Enterprise Portal client



Notice that the defined **Managed System Name** is displayed in the Tivoli Enterprise Portal client.

Summary

Now that you have completed this module, you can perform these tasks:

- Configure the Tivoli Agentless Monitoring agent on Windows with Windows API
- Start the Tivoli Agentless Monitoring agent on Windows
- View the data that is obtained by the Agentless Monitor on the Tivoli Enterprise Portal

Now that you have completed this module, you can configure and start the Tivoli Agentless Monitor for Windows OS with Windows API and connect to a Tivoli Enterprise Monitoring Server. You can view the WMI data collected by the monitoring agent on the Tivoli Enterprise Portal.



Trademarks, disclaimer, and copyright information

IBM, the IBM logo, ibm.com, and Tivoli are trademarks or registered trademarks of International Business Machines Corp., registered in many jurisdictions worldwide. Other product and service names might be trademarks of IBM or other companies. A current list of other IBM trademarks is available on the web at "[Copyright and trademark information](http://www.ibm.com/legal/copytrade.shtml)" at <http://www.ibm.com/legal/copytrade.shtml>

Other company, product, or service names may be trademarks or service marks of others.

THE INFORMATION CONTAINED IN THIS PRESENTATION IS PROVIDED FOR INFORMATIONAL PURPOSES ONLY. WHILE EFFORTS WERE MADE TO VERIFY THE COMPLETENESS AND ACCURACY OF THE INFORMATION CONTAINED IN THIS PRESENTATION, IT IS PROVIDED "AS IS" WITHOUT WARRANTY OF ANY KIND, EXPRESS OR IMPLIED. IN ADDITION, THIS INFORMATION IS BASED ON IBM'S CURRENT PRODUCT PLANS AND STRATEGY, WHICH ARE SUBJECT TO CHANGE BY IBM WITHOUT NOTICE. IBM SHALL NOT BE RESPONSIBLE FOR ANY DAMAGES ARISING OUT OF THE USE OF, OR OTHERWISE RELATED TO, THIS PRESENTATION OR ANY OTHER DOCUMENTATION. NOTHING CONTAINED IN THIS PRESENTATION IS INTENDED TO, NOR SHALL HAVE THE EFFECT OF, CREATING ANY WARRANTIES OR REPRESENTATIONS FROM IBM (OR ITS SUPPLIERS OR LICENSORS), OR ALTERING THE TERMS AND CONDITIONS OF ANY AGREEMENT OR LICENSE GOVERNING THE USE OF IBM PRODUCTS OR SOFTWARE.

© Copyright International Business Machines Corporation 2012. All rights reserved.

© 2012 IBM Corporation