

# IBM License Metric Tool V7.5

## Scheduling a self-update of agents



© 2013 IBM Corporation

In this training module, system users learn how to schedule a self-update of IBM License Metric Tool V7.5 agents.

## Objectives

After completing this training module, you can accomplish these tasks:

- Describe the IBM License Metric Tool V7.5 scheduled self-update of agents process
- Configure and verify the successful configuration of the three update parameters
- View agent scan group self-update results

After completing this training module, you can accomplish these tasks:

- Describe the IBM License Metric Tool V7.5 scheduled self-update of agents process
- Configure and verify the successful configuration of the three update parameters
- View agent scan group self-update results

## Scheduled self-update of agents overview

- Scheduled self-update allows you to define a time window during which the agent self-update can be performed
- Agent self-updates are based on the local time zones in which agents are located and not the time on the IBM License Metric Tool server

Scheduled self-updating of IBM License Metric Tool agents takes place during a user-configured and pre-defined time window. Be sure to use the local time zone of the agents and not the time zone of the IBM License Metric Tool server.

## About this module

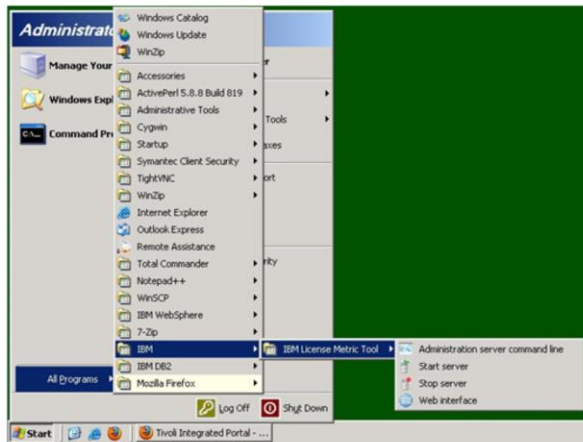
- The system configuration and OS environment for a scheduled self-update on a scan group:
  - IBM License Metric Tool version 7.5 server
  - Windows® Server 2003
  - Scan group: Zeus
  - Agent version: 7.2.2 Fix Pack 2
  - Agent Status: OK
- **Note:** Agents only self-update if they are up and running and communicating with an IBM License Metric Tool sever
- The goal is for all agents in the scan group Zeus to self-update to version 7.5 by 6 am, June 11th, 2012

This module uses this software application environment with a goal of having agents in the Zeus scan group self-update to V7.5 by 6 AM on June 11, 2012:

- IBM License Metric Tool V7.5
- Windows Server 2003
- Scan group Zeus
- Agent V7.2.2 Fix Pack 2
- Agent Status = OK

## Running the CLI

- Open the command line interface (CLI) on the machine running the IBM License Metric Tool server
- **Start > IBM > IBM License Metric Tool > Administration Server Command line**



5

Scheduling a self-update of agents

© 2013 IBM Corporation

Open the command line interface on the IBM License Metric Tool server. Next, click **Start > IBM License Metric Tool > Administration Server Command line**.

## Logging in to the CLI

- At the **lmt>** prompt, type **login** and press **Enter**
- Enter a user name and password



```
Administration server command line
XXXXXXXXXXXXXXXXXXXXXXXXXXXXXXXXXXXXXXXXXXXXXXXXXXXXXXXXXXXXXXXXXXXXXXXXXXXX
x Licensed Materials - Property of IBM
x 5724-I40 IBM License Metric Tool
x 5725-C68 IBM Tivoli Asset Discovery for Distributed
x Command line version 7.5 for Windows Server 2003 .
x (C) Copyright IBM Corp. 2002, 2010.
x All Rights Reserved. US Government Users Restricted Rights - Use,
x duplication or disclosure restricted by GSA ADP Schedule Contract with IBM Cor
p.
x For more detailed help, refer to product manual.
XXXXXXXXXXXXXXXXXXXXXXXXXXXXXXXXXXXXXXXXXXXXXXXXXXXXXXXXXXXXXXXXXXXXXXXXXXXX

lmt>login
Enter the user name: tipadmin
Enter the user password:

CODCL0033I: The command has been successfully performed.

lmt>_
```

Log in to the IBM License Metric Tool server with a username and password provided by a system administrator.

## Configuring the scheduled self-update of IBM License Metric Tool agents

- Configure scheduled self-update on the scan group Zeus starting at 22:00 June 10 2012 and ending 8 hours later

**Note:** Today's date is June 06 2012

- Three important parameters to remember
  - update\_enabled
  - update\_start
  - update\_interval

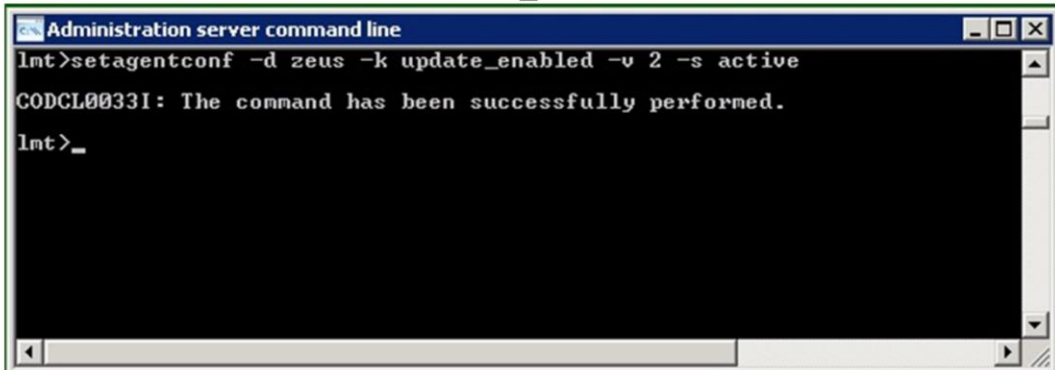
Use today's date to configure a scheduled self-update of agents in a specific and named scan group. Pick a scheduled self-update starting time and an ending time for the update of agents.

Prepare to configure and verify the configuration of these parameters:

- update\_enabled
- update\_start
- update\_interval

## (1 of 3) Setting the update\_enabled value

- Run all commands from the lmt> command line
- Run this command to set **update\_enabled** to **2**  
`setagentconf -d zeus -k update_enabled -v 2 -s active`



```
Administration server command line
lmt>setagentconf -d zeus -k update_enabled -v 2 -s active
CODCL0033I: The command has been successfully performed.
lmt>_
```

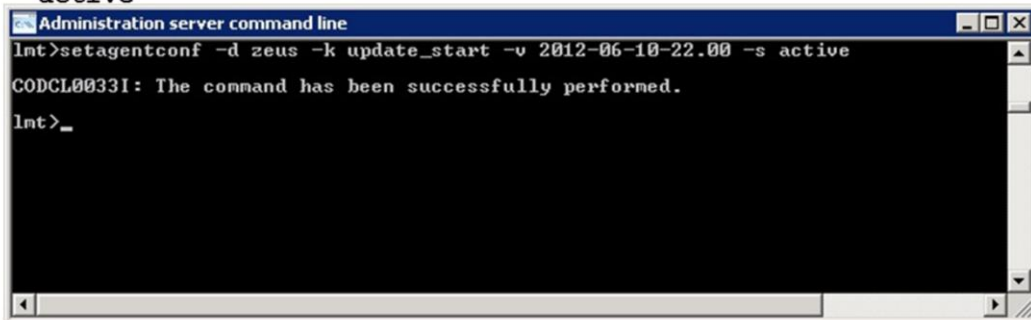
In this slide, the **update\_enabled** parameter value is set to **2**.



## (2 of 3) Setting the update\_start value

Run this command to set the value of update\_start to June 10th 2012 at 22:00

```
setagentconf -d zeus -k update_start -v 2012-06-10-22.00 -s active
```



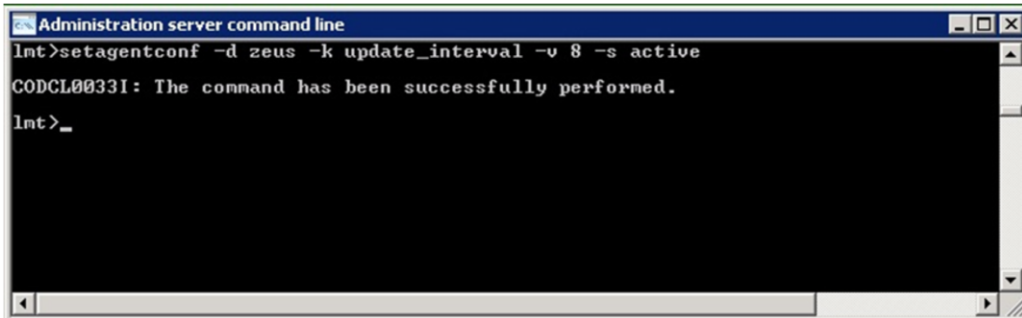
```
Administration server command line
lmt>setagentconf -d zeus -k update_start -v 2012-06-10-22.00 -s active
CODCL0033I: The command has been successfully performed.
lmt>_
```

In this slide, the **update\_start** parameter value is set to 2200 hours on June 06, 2012. Remember that this is 2200 hours in the local time zone of the agent and not that of the IBM License Metric Tool server.

### (3 of 3) Setting the update\_interval value

Run this command to set the value of **update\_interval** to **8**

```
setagentconf -d zeus -k update_interval -v 8 -s active
```



```
Administration server command line
imt>setagentconf -d zeus -k update_interval -v 8 -s active
CODCL0033I: The command has been successfully performed.
imt>_
```

In this slide, the **update\_interval** is set to **8** hours.

## (1 of 3) Verifying correct parameter values

Run this command to verify that **update\_enabled** is active

```
getagentconf -d zeus -k update_enabled
```

```
lmt>getagentconf -d zeus -k update_enabled  
Name: update_enabled  
Value: 2  
State: Active
```

In this slide, the **update\_enabled** parameter value is verified. The system response value is **2**.

## (2 of 3) Verifying correct parameter values

Run the command `getagentconf -d zeus -k update_start` to verify that **update\_start** is active

```
Int>getagentconf -d zeus -k update_start
Name: update_start
Value: 2012-06-10-22.00
State: Active
```

Here, the **update\_start** parameter value is verified. The system response value is June 10, 2012 at 2200 hours.

### (3 of 3) Verifying correct parameter values

Run the command `getagentconf -d zeus -k update_interval` to verify that **update\_interval** is **active**

```
lmt>getagentconf -d zeus -k update_interval
Name: update_interval
Value: 8
State: Active
```

In this slide, the **update\_interval** parameter value is verified. The system response value is **8**.

## Viewing the self-update results

- Check the IBM License Metric Tool web user interface
- Agents in the scan group Zeus self-update to V7.5.0 by June 11th, 6 AM

The screenshot displays the IBM License Metric Tool (LMT) web user interface. The top navigation bar includes the Tivoli logo, a view selector set to 'LMT startup', and a welcome message for 'tipadmin'. The left sidebar contains a navigation menu with categories like 'Welcome', 'Users and Groups', 'Settings', 'IBM License Metric Tool', 'IBM Audit Reports', 'Software', 'Hardware', and 'Infrastructure'. The main content area is titled 'Agents' and shows 'Agents in your Infrastructure'. Below this, a table displays agent status information. The table has columns for 'Select', 'Status', 'Version', 'Network Address', 'Server ID', and 'Operating System'. A single agent is listed with a status of 'OK', version '7.5.0.0', network address 'NCD44176', server ID 'IBM 8303 KDFK9PV', and operating system 'Windows 2003 5.2'. The interface also includes a table control with 'Page 1 of 1', a 'Go' button, and 'Rows 1'.

Select	Status	Version	Network Address	Server ID	Operating System
<input type="checkbox"/>	OK	7.5.0.0	NCD44176	IBM 8303 KDFK9PV	Windows 2003 5.2

14

Scheduling a self-update of agents

© 2013 IBM Corporation

View the scheduled agent self-update results from the web user interface. In this slide, the eight hour span of our update interval has passed. On June 11, 2012 at 0600 hours, the scan group Zeus has already successfully self-updated its agents to V7.5.0.

## Summary

Now that you have completed this training module, you can accomplish these tasks:

- Describe the IBM License Metric Tool V7.5 scheduled self-update of agents process
- Configure and verify the successful configuration of the three agent self-update parameters
- View agent scan group self-update results

Now that you have completed this training module, you can accomplish these tasks:

- Describe the IBM License Metric Tool V7.5 scheduled self-update of agents process
- Configure and verify the successful configuration of the three agent self-update parameters
- View agent scan group self-update results

## Trademarks, disclaimer, and copyright information

IBM, the IBM logo, and [ibm.com](http://www.ibm.com) are trademarks or registered trademarks of International Business Machines Corp., registered in many jurisdictions worldwide. Other product and service names might be trademarks of IBM or other companies. A current list of other IBM trademarks is available on the web at "[Copyright and trademark information](http://www.ibm.com/legal/copytrade.shtml)" at <http://www.ibm.com/legal/copytrade.shtml>

Windows, and the Windows logo are registered trademarks of Microsoft Corporation in the United States, other countries, or both.

Other company, product, or service names may be trademarks or service marks of others.

THE INFORMATION CONTAINED IN THIS PRESENTATION IS PROVIDED FOR INFORMATIONAL PURPOSES ONLY. WHILE EFFORTS WERE MADE TO VERIFY THE COMPLETENESS AND ACCURACY OF THE INFORMATION CONTAINED IN THIS PRESENTATION, IT IS PROVIDED "AS IS" WITHOUT WARRANTY OF ANY KIND, EXPRESS OR IMPLIED. IN ADDITION, THIS INFORMATION IS BASED ON IBM'S CURRENT PRODUCT PLANS AND STRATEGY, WHICH ARE SUBJECT TO CHANGE BY IBM WITHOUT NOTICE. IBM SHALL NOT BE RESPONSIBLE FOR ANY DAMAGES ARISING OUT OF THE USE OF, OR OTHERWISE RELATED TO, THIS PRESENTATION OR ANY OTHER DOCUMENTATION. NOTHING CONTAINED IN THIS PRESENTATION IS INTENDED TO, NOR SHALL HAVE THE EFFECT OF, CREATING ANY WARRANTIES OR REPRESENTATIONS FROM IBM (OR ITS SUPPLIERS OR LICENSORS), OR ALTERING THE TERMS AND CONDITIONS OF ANY AGREEMENT OR LICENSE GOVERNING THE USE OF IBM PRODUCTS OR SOFTWARE.

© Copyright International Business Machines Corporation 2013. All rights reserved.